



9-13-1969

## September 13, 1969 Football Program, UOP vs. University of Texas, El Paso

University of Texas, El Paso

Follow this and additional works at: <https://scholarlycommons.pacific.edu/ua-football>

---

### Recommended Citation

University of Texas, El Paso, "September 13, 1969 Football Program, UOP vs. University of Texas, El Paso" (1969). *Football*. 341.

<https://scholarlycommons.pacific.edu/ua-football/341>

This Book is brought to you for free and open access by the Athletics at Scholarly Commons. It has been accepted for inclusion in Football by an authorized administrator of Scholarly Commons. For more information, please contact [mgibney@pacific.edu](mailto:mgibney@pacific.edu).

# Flyin' Miners / Pacific

September 13, 1969

Official Program 50¢

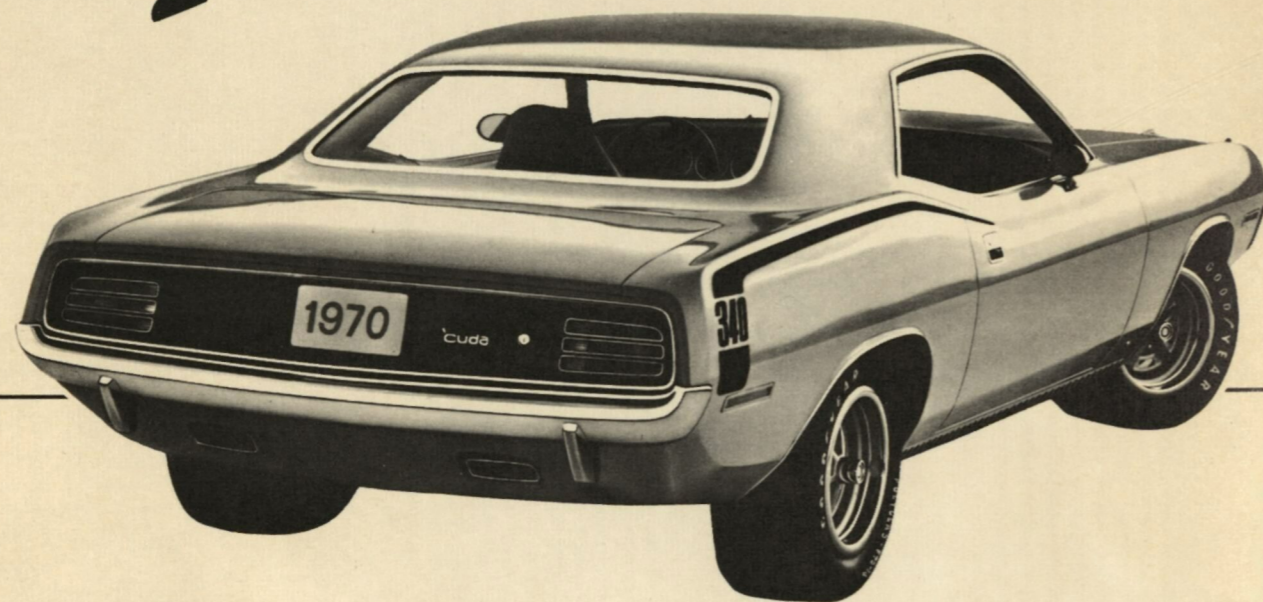
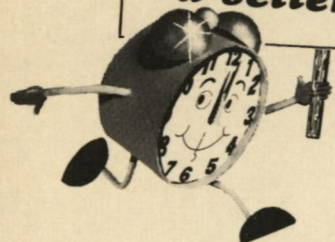
**50¢**



**SUN BOWL STADIUM**

**Band Night**

it only takes a  
minute to get  
a better deal



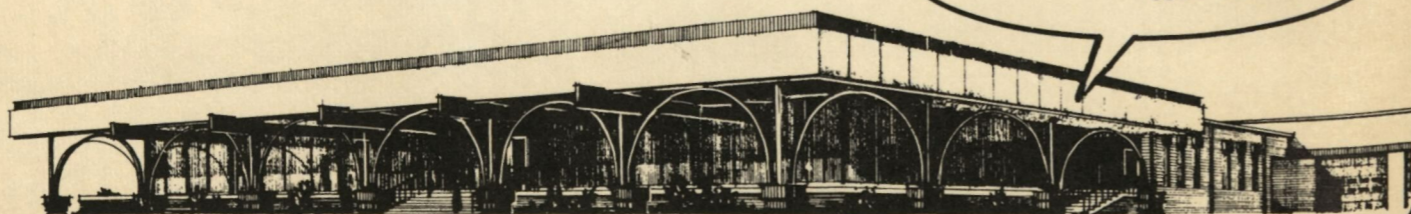
1970 BARRACUDA

IMPERIAL • CHRYSLER  
PLYMOUTH • BARRACUDA

**GO WITH THE UNBEATABLE MINERS AND  
THE UNBEATABLE DEALS AT . . .**

**DICK POE  
CHRYSLER • PLYMOUTH**

NEW HOME OF THE  
UNBEATABLE DEALS!  
6501 MONTANA



# General Tire Service

715 TEXAS AVENUE

*Tires:*

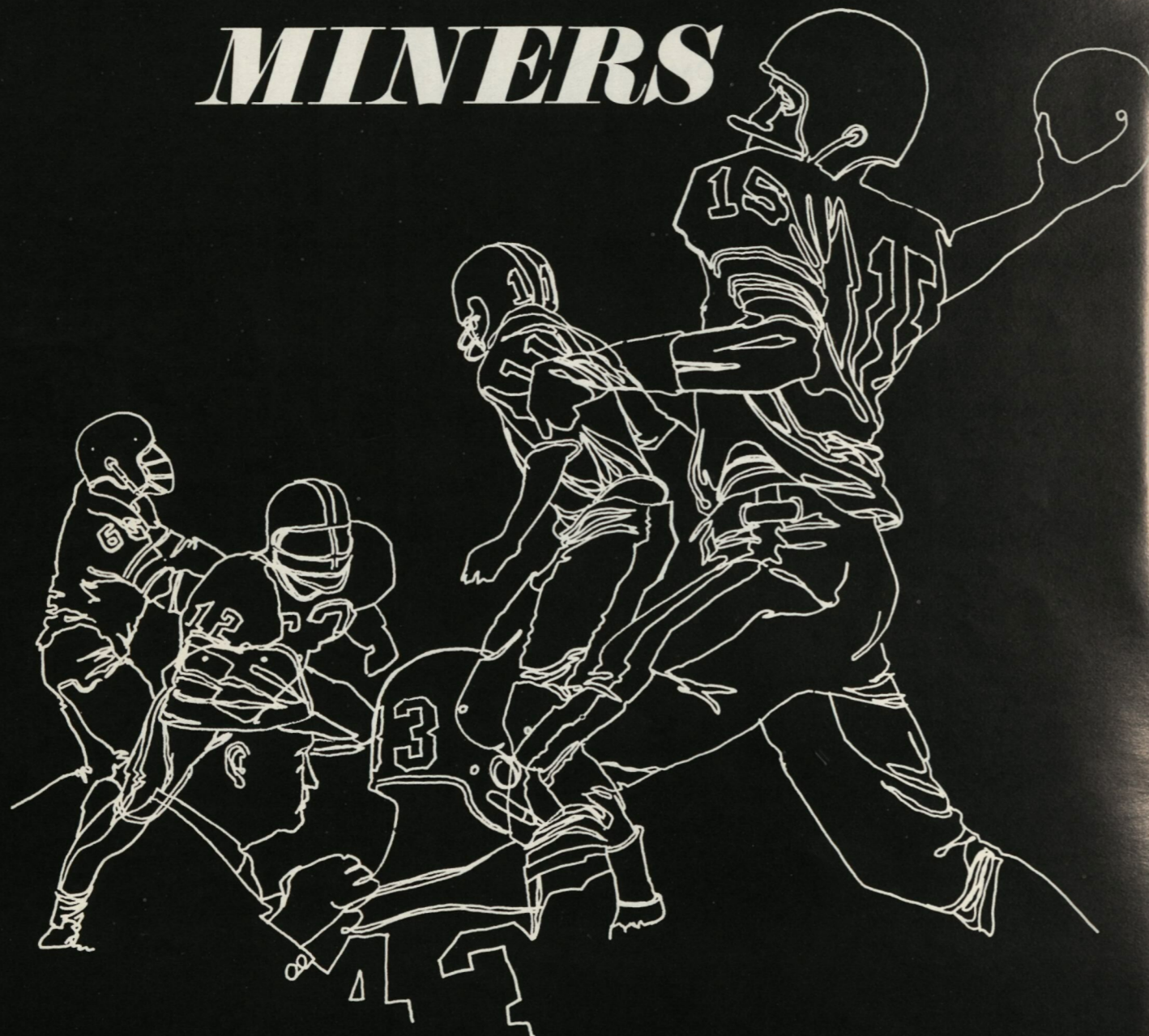
FROM THE SMALLEST TO THE BIGGEST  
FROM \$3.00 UP

FRONT END • BRAKE WORK • MUFFLERS • SHOCKS  
ELECTRONIC TUNE-UP

PHONE: 533-3423

AL DURAND, General Manager

# we line up with the **FLYIN' MINERS**



**EL PASO NATURAL GAS COMPANY**



NCAA  
Member

## TABLE OF CONTENTS

|                                    |       |       |
|------------------------------------|-------|-------|
| • Feature.....                     | Pages | 4-5   |
| • Tonight's Game.....              | Page  | 6     |
| • Feature.....                     | Page  | 8     |
| • 1969 Schedule.....               | Page  | 10    |
| • General Information.....         | Page  | 10    |
| • Board of Regents.....            | Page  | 12    |
| • President Dr. Joseph Smiley..... | Page  | 13    |
| • George McCarty.....              | Page  | 14    |
| • Coach Bobby Dobbs.....           | Page  | 16    |
| • Bobby's Lieutenants.....         | Pages | 17-19 |
| • Ross Moore.....                  | Page  | 21    |
| • Meet The Miners.....             | Pages | 24-38 |
| • Feature.....                     | Page  | 29    |
| • Flyin' Miners Roster.....        | Page  | 32    |
| • Starting Lineups.....            | Pages | 34-35 |
| • Opponents Roster.....            | Page  | 37    |
| • Feature.....                     | Page  | 40    |
| • Meet The Miners.....             | Pages | 39-45 |
| • Penalties.....                   | Page  | 46    |
| • Code of Signals.....             | Page  | 47    |
| • Marching Cavalcade.....          | Page  | 49    |
| • Yell Leaders.....                | Page  | 52    |
| • When You Sing.....               | Page  | 53    |
| • Record Book.....                 | Pages | 56-57 |
| • Basketball.....                  | Page  | 58    |
| • Stadium Information.....         | Page  | 60    |
| • Opponents.....                   | Pages | 63-68 |

## OFFICIAL 1969 SOUVENIR FOOTBALL MAGAZINE

EDDIE MULLENS . . . . . Editor  
BOB THOMAS . . . . . Assistant  
PAUL STRELZIN . . . . . Advertising  
BERNIE LOPEZ . . . . . Artist  
GUYNES PRINTING CO. . . . . Printers

Published by The University of Texas at El Paso Athletic Department. Represented for National Advertising by Spencer Advertising Co., Inc., 271 Madison Avenue, New York, N. Y.

### ABOUT THE COVER

U.T. El Paso co-eds discovered many unusual items of football equipment found in an old "College of Mines" locker. Karen Gotcher displays an old leather helmet used many years ago while Janett Saracino, kneeling, holds

a helmet used by the Flyin' Miners. The scene is in the equipment room at the Sun Bowl. Things have, indeed, changed since football was born 100-years ago.

—Color Photo by Luis Perez.

\*\*\*\*\*  
**OFFICIAL  
WATCH  
FOR THIS  
GAME  
LONGINES**  
THE WORLD'S MOST HONORED WATCH®



Ultra-Chron #8214, automatic calendar, 10k gold filled case and link bracelet, \$185.

**ULTRA-CHRON**  
THE WORLD'S MOST ACCURATE WATCH

Guaranteed accurate to a minute a month\*  
Requires no batteries  
Unaffected by gravitational field... therefore, not sensitive to change of position  
Fully automatic  
Superior protection against water, dust, shock, magnetism  
Thinner movement,  
Extraordinary reliability  
Tells date, hour, minute, second

Longines, only watch ever to win 10 World's Fair Grand Prizes and 28 Gold Medals.

\*Your Longines-Wittnauer Franchised Jeweler will adjust your Ultra-Chron to this accuracy, if necessary. Guarantee is for one year.

**LONGINES**  
LONGINES-WITTMANER WATCH COMPANY  
Longines-Wittnauer Building, New York

## Scenes From 1968



### 7TH ANNUAL HIGH SCHOOL BAND NIGHT PARTICIPATING BANDS

Andress Senior High School Band—John Bailey, Director  
 Austin Senior High School Band—Roy Brooks, Director  
 Bel Air Senior High School Band—Howard Shiplett, Director  
 Bowie Senior High School Band—Robert Hernandez, Director  
 Burges Senior High School Band—Berne Glover, Director  
 Clint Senior High School Band—Michael Marsh, Director  
 Coronado Senior High School Band—Richard Lambrecht, Director  
 Eastwood Senior High School Band—Kenneth Jones, Director  
 El Paso Senior High School Band—Jesus Salcido, Director  
 Gadsden Senior High School Band—Jack Gracie, Director  
 Hatch Senior High School Band—Vern Holliday, Director  
 Irvin Senior High School Band—Bob McGraw, Director  
 Jefferson Senior High School Band—Joe Dove, Director  
 Parkland Senior High School Band—Harry Lee Plumbley, Director  
 Ysleta Senior High School Band—John Faraone, Director  
 Ysleta Senior High School Drum Corp.  
 U. T. El Paso Marching Cavalcade—Harold L. Hillyer, Director

## SCORE AGAIN

**WITH  
FASHION  
AT . . .**

**GO  
CHARGE**

**del  
Norte**

THE FRIENDLY FAMILY DEPARTMENT STORE

Stanton at Overland



©AVIS RENT A CAR SYSTEM, INC..

**24 HOUR SERVICE  
778-9241  
INTERNATIONAL AIRPORT**

Low Avis rates — by hour, day, week or month  
include all gas, oil and proper insurance.

AVIS rents all makes of cars  
. . . features PLYMOUTH.





## TONIGHT'S GAME

By BOB THOMAS

Assistant Sports Information Director

The 1969 football season marks the Centennial Year of College Football. Since 1869, when the first game was played between Rutgers and Princeton, every aspect of the game has changed. Uniforms, equipment, rules and even the spectators have undergone a metamorphosis. Uniforms have, to some extent, become even stylish; equipment has been developed for both comfort and safety; the rules have been constantly changing to finally arrive at a set that insures uniformity and fairness; and the spectators have become an enlightened group that know and appreciate the game, as well as enjoy it.

The spectators that crowd into the Sun Bowl tonight will be treated to thrills which have the capacity to bring them to their feet time and again. This is attributed to the type of football that Coach Bobby Dobbs displays in his efforts to produce a winning football team. And he has been doing that ever since he was brought to the University of Texas at El Paso by Athletic Director George McCarty in 1965.

The University of the Pacific will be doing its best to set back Coach Dobbs' winning way tonight when they unleash a fearsome offensive lineup. With the exception of one man, the 'Tigers' entire offensive crew returns. Headed up by senior quarterback Mickey Ackley, Pacific has a fine running game as well as a potent passing attack.

The Tigers are blessed with a crop of fine receivers, all of whom possess the ability to snare the pigskin in and out of traffic. Heading this group are weak end Jack Morrison (5-11, 165), and Mark Knox, strong end (6-2, 195). Coach Dobbs' defensive secondary will also have to contend with receivers Geof Willis (6-3, 192), and Mark Yaple (6-3, 195). Morrison snared the ball 23 times for 579 yards and three scores last year and Knox managed the ball three times for 33 yards. Willis caught the pigskin eight times for 100 yards last year.

Pacific's head coach Doug Scovil has faced the dreaded chore of rebuilding his defensive line. Gone from last

year's starters are a guard, a tackle and an end, along with two linebackers. However, Coach Scovil does have an experienced defensive secondary returning which will give him some comfort.

The Miners' passing attack will try to destroy Coach Scovil's only comfort on his defensive lineup. Receivers Chuck Beall and Ed Puishes, up from the freshman team, show great promise as both can catch the ball and are fairly fleet of foot. Junior College transfer Dennis Mayfield can also be counted on to grab his share of passes. Clyde Glosson and Dave Watkins will be trading off on the flanker position, both showing good ability.

Quarterbacks Bill Craigo, a native El Pasoan, and Dennis Niemeyer will be directing the offense toward the goal lines. Niemeyer, a 6-0, 180-pound native of San Antonio, Texas, has had some game experience and has shown good form thus far. Craigo, up from the freshman ranks, needs actual game experience, but shows a great deal of promise.

On the offensive line, the only newcomer will be Lewis Brooks, a transfer from Western Arizona Junior College. Returning starters on the offensive line include center Dennis Bramlett, tackles Greg Rzycki and Mike Brady, and guard Dave Gerlach.

The defensive line added two new players, Dick Reiman who was an offensive guard last year, and Don Croft, a junior college transfer. Returning starters include defensive ends Gene Mack and Bob Larkin, and middle guard Calvin Taylor.

Both linebackers are new to the Miners, Rick Gunnes and Jim Sanson. Three of the defensive secondary are also new; Mike Reynolds, a transfer from Arizona Western, Eric Washington, up from the freshman team, and Kent Koval, also a frosh graduate.

The game has changed greatly since its conception, and so has the spectator. The spectator wants action and a wide-open ball game. He is sure to get both when the Flyin' Miners tackle the University of the Pacific tonight.

## RED TOP LINEN SUPPLY

TOPS IN SERVICE — TOPS IN QUALITY



IRV BERRY

COMPLETE  
LINEN  
RENTAL

4640 DONIPHAN DR.

PHONE 584-3405

Who Put the OH! in STEREOH!

# KIZZ

AM 1150 kHz

AGAIN BRINGS YOU  
NOTRE DAME  
FOOTBALL

### 1969 NOTRE DAME SCHEDULE

| Date      | Opponent                  | Air Time   |
|-----------|---------------------------|------------|
| Sept. 20  | IRISH vs. Northwestern    | 11:10 a.m. |
| Sept. 27  | IRISH vs. Purdue          | 11:10 a.m. |
| Oct. 4    | IRISH vs. Michigan State  | 11:10 a.m. |
| Oct. 11   | IRISH vs. Army            | 11:40 a.m. |
| Oct. 18   | IRISH vs. Southern Calif. | 11:10 a.m. |
| **Oct. 25 | IRISH vs. Tulane          | 6:10 p.m.  |
| Nov. 1    | IRISH vs. Navy            | 11:10 a.m. |
| Nov. 8    | IRISH vs. Pittsburgh      | 11:10 a.m. |
| **Nov. 15 | IRISH vs. Georgia Tech    | 7:10 p.m.  |
| Nov. 22   | IRISH vs. Air Force       | 11:10 a.m. |

\*\*Double Asterisk games on KIZZ-FM

All others on KIZZ-AM

### PLUS SELECTED W.A.C. GAMES

|             |                           |
|-------------|---------------------------|
| November 1  | Arizona State vs. Wyoming |
| Air Time    | Station                   |
| 8:00 p.m.   | KIZZ-FM                   |
| November 29 | Arizona State vs. Arizona |
| Air Time    | Station                   |
| 8:00 p.m.   | KIZZ-FM                   |

### NOTRE DAME FOOTBALL

SPONSORED BY:

- Piggy Bank Stations
- Bliss Auto Sales
- Pepsi Cola Bottlers

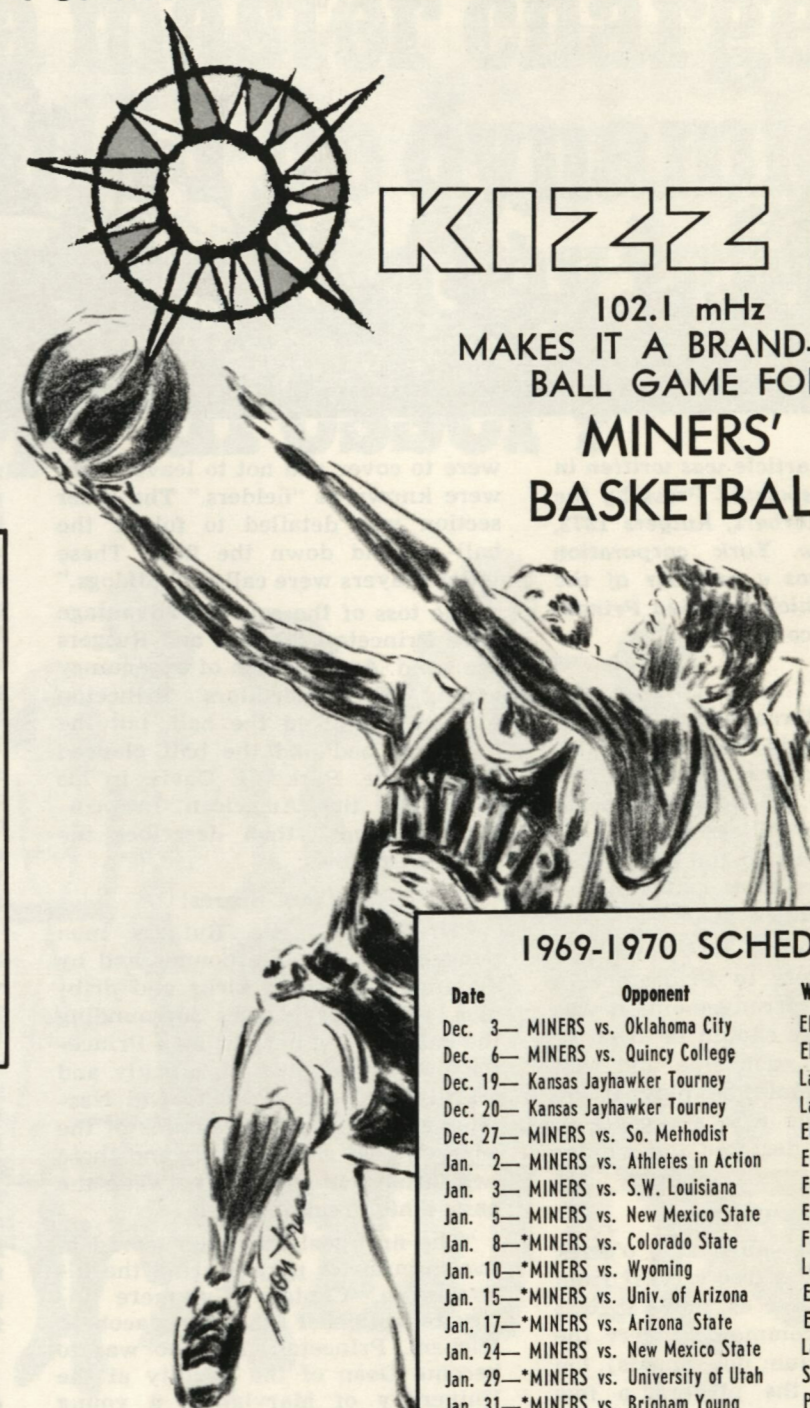
### WIN AN F-M RADIO . . . FREE!

Predict the score of the next Miners' football game. Mail your entry to KIZZ Radio, P. O. Box 10035, El Paso. Closest prediction wins F-M Radio! Earliest postmark breaks tie.

# KIZZ FM

102.1 mHz

MAKES IT A BRAND-NEW  
BALL GAME FOR  
MINERS'  
BASKETBALL



### 1969-1970 SCHEDULE

| Date    | Opponent                          | Where       | Air Time  |
|---------|-----------------------------------|-------------|-----------|
| Dec. 3  | MINERS vs. Oklahoma City          | El Paso     | 7:55 p.m. |
| Dec. 6  | MINERS vs. Quincy College         | El Paso     | 7:55 p.m. |
| Dec. 19 | Kansas Jayhawker Tourney          | Lawrence    | 6:50 p.m. |
| Dec. 20 | Kansas Jayhawker Tourney          | Lawrence    | 6:50 p.m. |
| Dec. 27 | MINERS vs. So. Methodist          | El Paso     | 7:55 p.m. |
| Jan. 2  | MINERS vs. Athletes in Action     | El Paso     | 7:55 p.m. |
| Jan. 3  | MINERS vs. S.W. Louisiana         | El Paso     | 7:55 p.m. |
| Jan. 5  | MINERS vs. New Mexico State       | El Paso     | 7:55 p.m. |
| Jan. 8  | *MINERS vs. Colorado State        | Ft. Collins | 7:55 p.m. |
| Jan. 10 | *MINERS vs. Wyoming               | Laramie     | 7:55 p.m. |
| Jan. 15 | *MINERS vs. Univ. of Arizona      | El Paso     | 7:55 p.m. |
| Jan. 17 | *MINERS vs. Arizona State         | El Paso     | 7:55 p.m. |
| Jan. 24 | MINERS vs. New Mexico State       | Las Cruces  | 7:20 p.m. |
| Jan. 29 | *MINERS vs. University of Utah    | Salt Lake   | 7:55 p.m. |
| Jan. 31 | *MINERS vs. Brigham Young         | Provo       | 7:55 p.m. |
| Feb. 5  | *MINERS vs. Univ. of New Mex.     | El Paso     | 7:55 p.m. |
| Feb. 12 | *MINERS vs. Univ. of Wyoming      | El Paso     | 7:55 p.m. |
| Feb. 14 | *MINERS vs. Colorado State        | El Paso     | 7:55 p.m. |
| Feb. 19 | *MINERS vs. Arizona State         | Tempe       | 7:55 p.m. |
| Feb. 21 | *MINERS vs. University of Arizona | Tucson      | 7:55 p.m. |
| Feb. 26 | *MINERS vs. Brigham Young         | El Paso     | 7:55 p.m. |
| Feb. 28 | *MINERS vs. University of Utah    | El Paso     | 7:55 p.m. |
| Mar. 4  | *MINERS vs. Univ. of New Mex.     | Albuq.      | 7:55 p.m. |

\*Western Athletic Conference Game

PLAY-BY-PLAY

GARY GALLUP

### MINERS BASKETBALL

SPONSORED BY:

- Southern Union Gas Company
- Safeway Stores
- Casa Ford

# The First Intercollegiate Game by JOHN W. HERBERT, Rutgers '72



(The following article was written in 1933 for the Associated Press by the late John W. Herbert, Rutgers 1872, prominent New York corporation lawyer, who was a member of the Rutgers "25" which defeated Princeton in the 1869 contest.)

THE FIRST intercollegiate game of football, not only in the United States but in the world, was played on November 6, 1869, at New Brunswick between Rutgers College and Princeton University. I had the proud distinction of having participated in that game on the Rutgers team.

The challenge for the game was issued by Rutgers to Princeton. In the preliminary arrangements it was agreed that there should be twenty-five players on each side and that three games should be played, the side winning the first six goals in the game to be declared the winner of that game.

## Had No Uniforms

The game was called at 3 o'clock and started with a free kickoff from the tee, the same as now. It was played on the commons (where the Rutgers gymnasium now stands). On the arrival of the players, a few minutes before the game was called, they laid aside their hats, coats and vests. Neither team was in uniform, although some Rutgers players wore scarlet stocking-caps.

The players lined up on each side, the organization of the twenty-five being the same on both sides. Two men were selected by each team to play immediately in front of the opponent's goal and were known as captains of the enemy's goal.

The remainder of each team was divided into two sections. The players in one section were assigned to certain tracts of the field which they

were to cover and not to leave. They were known as "fielders." The other section was detailed to follow the ball up and down the field. These latter players were called "bulldogs."

The toss of the coin for advantage gave Princeton the ball and Rutgers the wind. Amid a hush of expectancy among the spectators Princeton bucked or kicked the ball, but the kick was bad and the ball glanced to one side. Parke H. Davis, in his "Football, the American Intercollegiate Game," then describes the game as follows:

## Rutgers Scores!

"The light, agile Rutgers men pounced upon it like hounds and by driving it by short kicks and dribbles, the other players surrounding the ball and not permitting a Princeton man to get near it, quickly and craftily forced it down to Old Nassau's goal, where the captains of the enemy's goal were waiting and these two latter sent the ball between the posts amid great applause.

"The first goal had been scored in five minutes of play. During the intermission, Captain Gummere instructed Michael (the late Jacob E. Michael, Princeton '71, who was to become Dean of the Faculty at the University of Maryland), a young giant of the Princeton 25, to break up Rutgers massing around the ball. Sides were changed and Rutgers 'bucked'.

"In this period the game was fiercely contested. Time and time again Michael or "Big Mike," charged into Rutgers' primitive mass play and scattered the players like a burst bundle of sticks. On one of these plays Princeton obtained the ball and by a long accurate kick scored the second goal."

The third goal went to Rutgers and the fourth was kicked by Princeton.

The fifth and sixth goals went to Rutgers, but the feature of this latter

period of play in the memory of the players after the lapse of many years is awarded to "Big Mike" and Large, (The late State Senator George H. Large of Flemington, a Rutgers player). Someone, by a random kick, had driven the ball to one side, where it rolled against the fence and stopped. Large led the pursuit for the ball, closely followed by Michael. They reached the fence, on which the students were perched, and unable to check their momentum, in a tremendous impact struck the fence which gave way with a crash and over went its load of yelling students to the ground.

Every college probably has the humorous tradition of some player who has scored against his own team. This tradition at Rutgers dated from this first game, for one of her players, whose identity is unknown, in the sixth period started to kick the ball between his own goal posts. The kick was blocked, but Princeton took advantage of the opportunity and soon made the goal. This turn of the game apparently disorganized Rutgers, for Princeton also scored the next goal after a few minutes of play, thus bringing the total up to four all.

## Strategy!

At this stage Rutgers resorted to that use of craft which has never failed to turn the tide of every close battle. Captain Leggett has noticed that Princeton obtained a great advantage from the taller stature of their men, which enabled them to reach above the others and bat the ball in the air in some advantageous direction.

Rutgers was ordered to keep the ball close to the ground. Following this stratagem the Rutgers men determinedly kicked the ninth and tenth goals, thus winning the match six goals to four and with it the distinction of a victory in the first game of intercollegiate football played in the world.

# If I had a master charge card, could I be dynamic and popular like my friend, the snappy dresser?



**YES!** You too can groove — with Master Charge. Buy swell things like ukes and spats and caps. Stereos and records and books. Even a neat racoon tail for your car-radio antenna. Name it — buy it — with Master Charge. And if all else fails, get a self-improvement course with your Master Charge card.

FDIC A FULL SERVICE BANK

**EL PASO NATIONAL BANK**





### 1969 FOOTBALL SCHEDULE

September 13—Pacific  
 September 27—at New Mexico\*  
 October 4—Utah\*  
 October 11—at Wyoming\*  
 October 18—at Arizona\*  
 October 25—Brigham Young\*  
 November 1—at Colorado State\*  
 November 8—New Mexico State\*  
 November 15—Arizona State\*  
 November 29—Xavier (afternoon)

\*WAC Games  
 Home games start at 7:30 except Xavier.



*Those  
 on the go  
 ...go Sunbeam*

*The bread for modern America*

### GENERAL INFORMATION

Name: The University of Texas at El Paso

Founded: 1913

Enrollment: 11,000

Nickname: Miners

Colors: Orange and White

Stadium: Sun Bowl (30,000 capacity)

Director of Athletics:  
 George McCarty

Head Football Coach:  
 Bobby Dobbs

Assistants:  
 Dave Nusz, Wilson Knapp, Bob Lee, Pete Manning, Jim Blevins, J. D. Partridge.

Assistant Director of Athletics:  
 Jim Bowden

Athletic Business Manager:  
 Mrs. Kathie Bates

Trainer:  
 Ross Moore

Basketball Coaches:  
 Head—Don Haskins  
 Assistant—Ed Sparling

Baseball Coaches:  
 Head—Andy Cohen  
 Assistant—O. C. Kruschwitz

Track Coach:  
 Wayne Vandenburg

Golf Coach:  
 Fred Atkins

Tennis Coach:  
 Hal Elder

Wrestling Coach:  
 Larry Harrison

Sports Information Director:  
 Eddie Mullens

Student Assistant:  
 Bob Thomas

Band: Marching Cavalcade  
 150 Pieces

Director of Bands:  
 Harold L. Hillyer

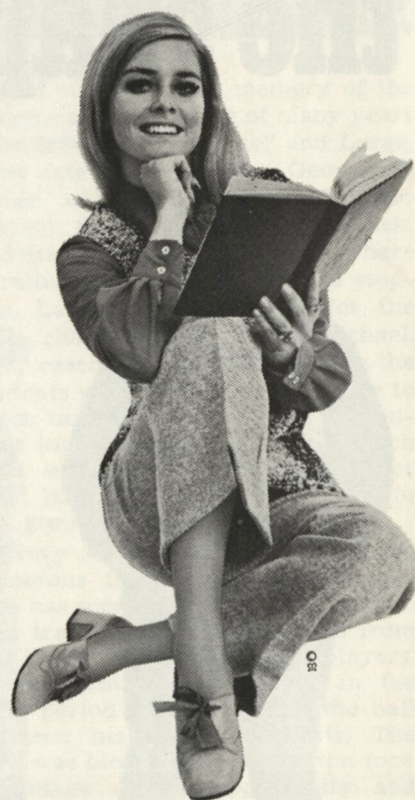
### ATHLETIC COUNCIL

Dr. Richard Burns, Director, Institutional Studies, Chairman; Henry P. Ehrlinger, Asso. Professor, Engineering; Dr. Carl Walker, Asso. Professor, Education; Dr. Juan Lawson, Asso. Professor, Math and Physics; Dr. James Reeves, Biology Dept. (Head); Dr. William McAnulty, Geology Dept. (Head); Dr. William H. Rivera, Asso. Professor, Chemistry; Dr. Jimmy Walker, Dean of Students; H. G. St. Clair, Business Manager; George C. McCarty, Director of Athletics.

EMPEROR



EMPRESS



Take care of your health  
 and appearance with the  
 aid of our luxurious and  
 ultra modern facilities.

come by  
 and see us soon  
 two big locations

6003-A B N. Mesa  
 Coronado Shopping Center  
 584-4431

6758 Edgemere  
 Edgemere Shopping Center  
 778-9296

Their seat could sit in our seat.



Coach and Economy seats  
 on all our Boeing FanJets are as wide  
 as First Class, so wide only 5 ft  
 in a row. It's a Continental exclusive.

The airline that's better because  
 it wants to be.

That's the difference pride makes.



**CONTINENTAL**  
 The Proud Bird with the Golden Tail



**FRANK ERWIN**, Chairman  
Austin



**WILLIAM BAUER**  
Port Lavaca

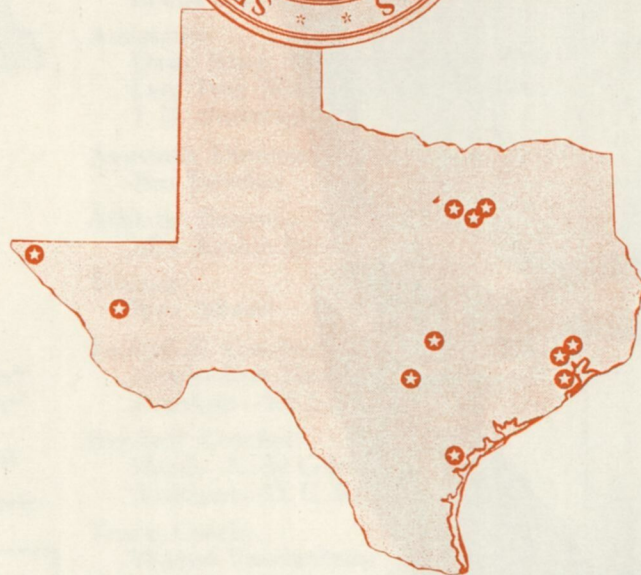
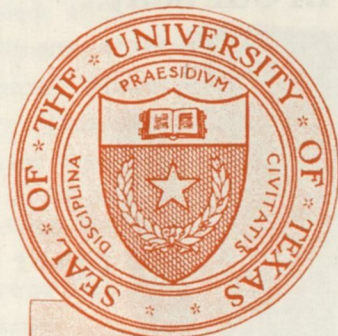


**JOHN PEACE**  
San Antonio



**DAN C. WILLIAMS**  
Dallas

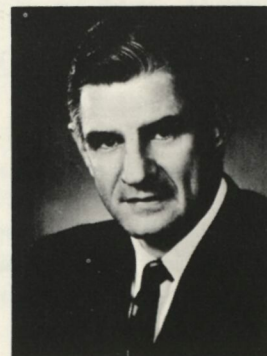
## BOARD OF REGENTS University of Texas System



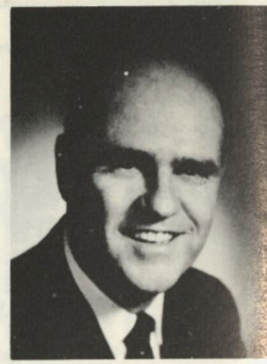
Aside from University of Texas at El Paso, the University system includes these units:

The Main University at Austin, the Medical Branch at Galveston, the Dental Branch at Houston, the M.D. Anderson Hospital and Tumor Institute at Houston, the Graduate School of Biomedical Sciences, the Southwestern Medical School at Dallas, University of Texas at Arlington and the new South Texas Medical School at San Antonio.

Research units of the Main University include the Institute of Marine Science at Port Aransas and McDonald Observatory near Fort Davis.



**JOSEPH KILGORE**  
Austin



**JACK JOSEY**, Vice-Chairman  
Houston



**FRANK IKARD**  
Wichita Falls



**DR. E. T. XIMENES**  
San Antonio



**JENKINS GARRETT**  
Fort Worth

## PRESIDENT Dr. Joseph R. Smiley

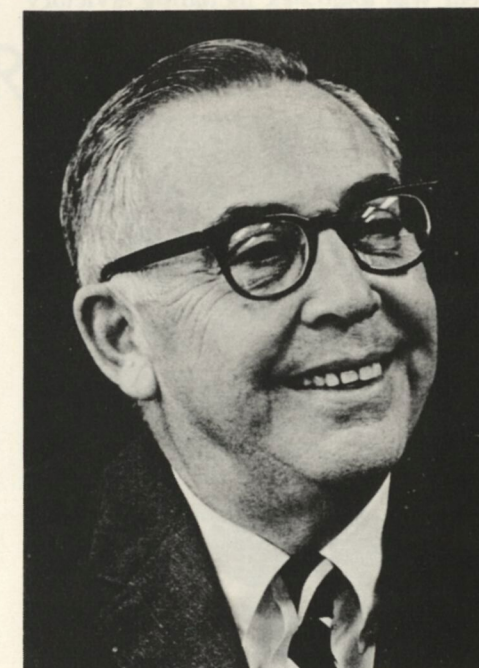
Dr. Joseph R. Smiley, a nationally recognized authority in educational administration, became the seventh president of the University of Texas at El Paso on Feb. 1, succeeding Dr. Joseph M. Ray.

Dr. Smiley came to UTEP from the University of Colorado, where he served as president since 1963. This is homecoming for Dr. Smiley, since in 1958 he was president of Texas Western College. He left to become vice-president and provost of UT Austin in 1960 and was president of that institution from 1961 through 1963.

A native of Dallas, he earned his A.B. and A.M. from Southern Methodist University and his Ph.D. from Columbia University. He later was a Fulbright Research Fellow in Paris, France.

His teaching experience includes classes at Arkansas A&M College, North Texas State College, Columbia, and the University of Illinois. During his 11 years at Illinois he rose from

assistant professor (of French) to Dean of the College of Liberal Arts and Sciences.



At present he is a member of the National Science Foundation Advisory Committee for Institutional Relations, Institute of International Education, Regional Health Advisory Committee of the U. S. Department of Health, Education and Welfare and the President's Commission on White House Fellows. He has been Chairman of the U. S. Advisory Commission on International Educational and Cultural Affairs and was a member of the 1966 U. S. Delegation to the 14th General Conference of the United Nations Educational, Scientific and Cultural Organization in Paris.

Dr. Smiley served as a lieutenant, office of Naval Intelligence during World War II. The new U. T. El Paso president is the author of books and articles on French literature. In 1967 he was named a Chevalier of the French Legion of Honor, a rare distinction for an American.

Married to the former Mary Fincher of Waldo, Ark., the Smileys have two children, Stephen and Anne.

## ICE - BEER - WINE - SOFT DRINKS - MAGAZINES PICNIC SUPPLIES - SCHOOL SUPPLIES

•  
OPEN  
EVERY DAY

7 a.m.  
11 p.m.  
•

109 Balboa  
106 Durrill  
369 Shadow Mt.  
1811 Hunter Rd.  
6780 Cielo Vista



Office  
214 Baltimore

•  
OPEN  
EVERY DAY

7 a.m.  
11 p.m.  
•

995 Lomaland  
9440 McCombs  
6124 Montana  
6100 Trowbridge  
3385 Wedgewood

## ATHLETIC DIRECTOR George McCarty

There isn't enough paint manufactured in a year to color George McCarty pessimistic.

Color him enthusiastic or paint him optimistic but the Director of Athletics at Texas-El Paso doesn't even use the word pessimist.

Although McCarty is the man who put the Go Power into the athletic department at Minerland, he often is as overlooked as a hair in biscuits.

Few men in his profession have, in a short period of time, had the satisfaction of watching an athletic program come off of the ground as rapidly as the one at Texas-El Paso.

When McCarty stepped into the athletic directorship in 1962, the program was in such poor shape even the buzzards hesitated to fly overhead.

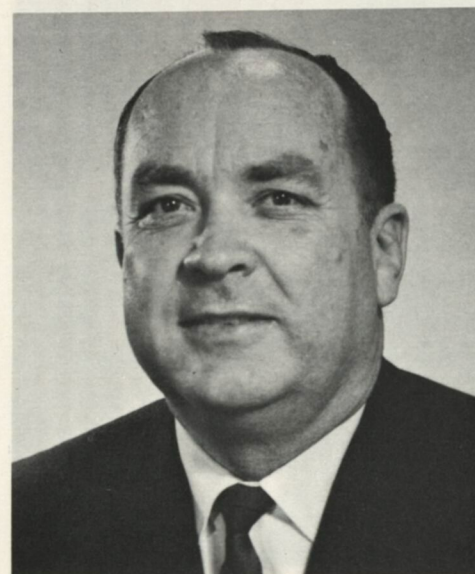
Frankly, things looked about as cheery as a date with the gas chamber when McCarty entered the picture. Even after the handsome Sun Bowl was built, many expressed the opinion that it be leased to a goat farmer.

Following a season, 1964, when victories were as hard to locate as a volunteer for death row, McCarty lured Bobby Dobbs away from the Candian

Football League and handed him the football program at Minerland.

Dobbs, of course, had a hard time getting started. All he did the first year was to go 8-3, including a victory over TCU in the Sun Bowl classic.

Under McCarty, the Texas-El Paso athletic program has won a national



basketball championship, produced a pair of world champions in track, become members of the fast rising Western Athletic Conference, etc.

Prior to his assignment as Dean of Men, McCarty had served as basketball coach after serving as both basketball coach and athletic director at nearby New Mexico State.

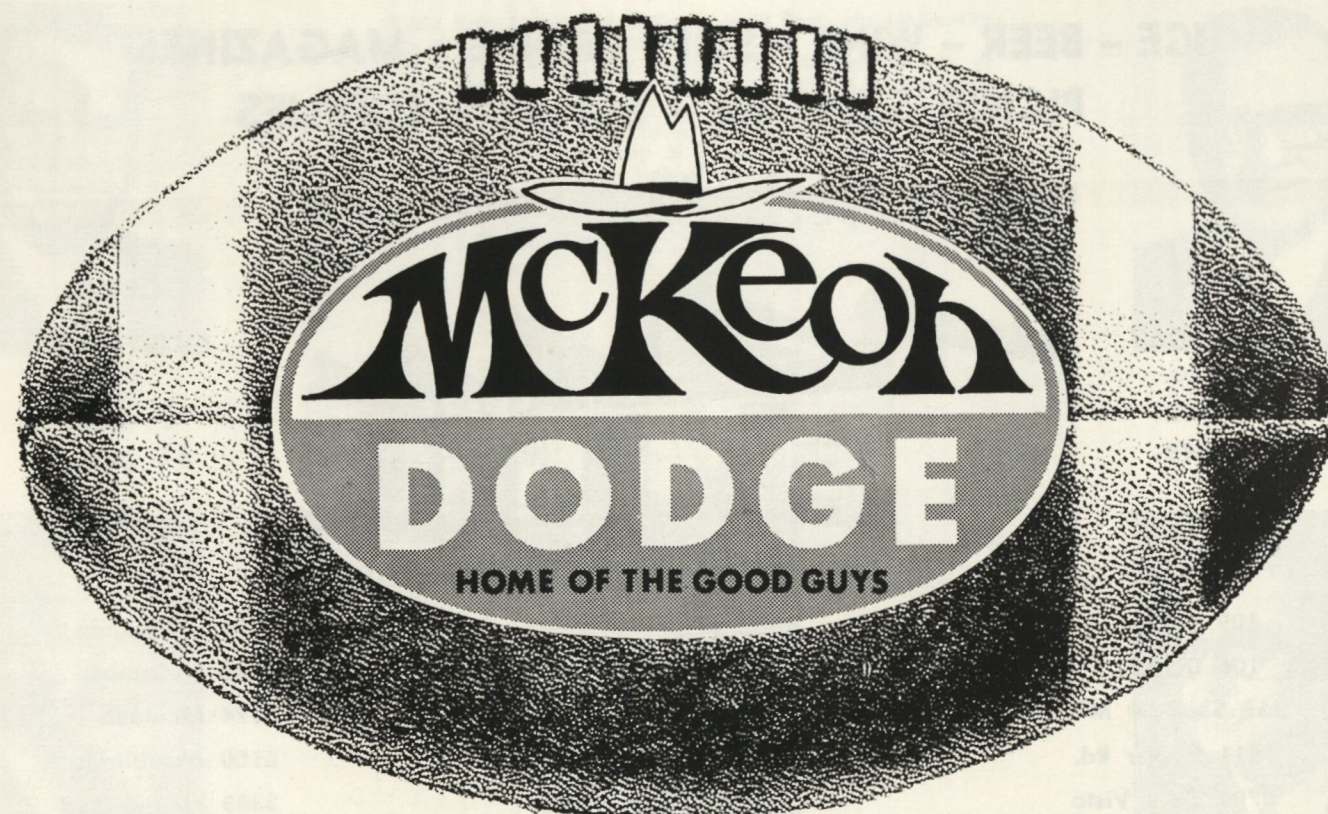
McCarty's bounce-bouncers kept the nets waving like hula shirts in a windstorm by producing a combined record — at New Mexico State and Texas-El Paso — of 136-106.

Following a tour in the Air Force, emerging in 1946 with the rank of lieutenant colonel, McCarty launched his coaching career at his home town of McLean, Texas, and then assumed the New Mexico State assignment.

A highlight of his career came last year when he was honored as "Boss of the Year" by the International City chapter of American Business Women's Association.

McCarty and his wife Marietta are the parents of two children, a married daughter, Sandy, who now resides in Dallas and a son, Mike now a member of the air arm of the Navy.

GET ON THE BALL WITH A NEW 1970 DODGE



1363 AIRWAY BOULEVARD

772-5261

# UNIVERSITY TRUST

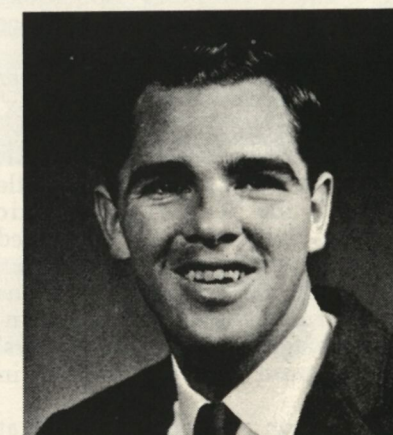
## DIVISION RESERVE LIFE INSURANCE

### YOUR CAMPUS

### REPRESENTATIVES



LOUIS HILL  
MGR.



RON McCLUSKY  
EX S. A. PRESIDENT

### WE SUPPORT THE FLYING MINERS AND THE UTEP STUDENT BODY



JAMES FOUNTAIN  
EX MINER CO-CAPTAIN

THE UNIVERSITY PLAN IS DESIGNED SOLELY FOR SENIORS AND GRADUATE STUDENTS. THE UNIVERSITY TRUST PLAN ENABLES SENIORS AND GRADUATE STUDENTS TO START THEIR ESTATE PROGRAM WITHOUT PAYING PREMIUMS WHILE IN SCHOOL.

TALK TO THE REST — THEN PURCHASE THE BEST — UNIVERSITY TRUST — 532-4221.

You might call him Mr. Cool. When Bobby Dobbs' Flyin' Miners are in action, he shows about as much emotion as a doorknob.

During a game, Dobbs never paces the sidelines, shouting at his players or throwing clipboards into the air or kicking the turf in disgust. Observing him, you might arrive at the conclusion that if a fire broke out and he was on the 21st floor of a hotel he would calmly pick up his coat, check to see if he was leaving anything before walking down the fire escape.

His aides, who work the sidelines during a game, maintain Dobbs can spot more things from that vantage point than a U2 spy plane.

And he saw many things last year he didn't like and intends, hopefully, to correct some of this in 1969.

Dobbs' 1968 team dipped to 4-5-1, after being tabbed as a possible title contender in the Western Athletic Conference. This left him as pleased as a monkey with a plastic banana.

Despite the 1968 record, Dobbs has performed more miracles than Mandrake the Magician with the Miners' football program since his arrival in 1965.

His four year record is 25-14-2 at Minerland, including a pair of Sun Bowl victories, in 1965 against TCU and 1967 against Mississippi.

When Dobbs arrived at Minerland, football was so popular that some talk was making the rounds about fielding a six-man team. The 1964 team had gone 0-8-2 and for a three-year period (1962-64), the record was a sparkling 7-20-2.

Most men would have checked their insurance policies before entering a situation like Dobbs faced for the 1965 season. If the future was as bright as the past, Dobbs would probably still be at Calgary of the Canadian Football League.

Director of Athletics George McCarty lured the personable Dobbs away from the Canadian League and handed him the task of rebuilding the Miners.

The assignment was about as easy as pitching hay with a table fork.

Robert Lee Dobbs brought wide-open, crowd pleasing football to El Paso. The ball is in the air more often than snowflakes during a snowstorm. Touchdown passes (96 in four years) are as common as sawdust in a lumber camp. Dobbs' first four teams compiled 11,430 passing yards.

Born in Munday, Texas, the Miner drill master was reared in Frederick, Okla., and educated at both University of Tulsa and the U. S. Military Academy.

He had played his sophomore and junior years at Tulsa — seeing action in both the Sun Bowl and Sugar Bowl — when World War II approached.

After six months in the Air Force, Dobbs received an appointment to West Point where he was awarded two more years of varsity competition. He was a starting fullback on the fine 1943-44 Army teams.

Following his flight training at Enid, Okla., Dobbs served four years (1948-51) as head coach of the Carswell AFB teams in Fort Worth.

Col. Earl (Red) Blaik tapped the promising Dobbs as his backfield coach at West Point, a position he held from 1952 until after the 1954 season.

Dobbs' head coaching career went on the launching pad in 1955 at Tulsa where he inherited a team which had dropped 14 straight. He remained through the 1960 season and his teams compiled a 31-27-2 record.

Following the 1960 season, Dobbs assumed the head chair of the Calgary Stampede of the Canadian League. His four teams put together a 38-23-3 record with his 1964 squad finishing 12-4 and appearing in the playoffs for the fourth straight year.

He and his wife Joanne are the parents of three children, Johnny Bob, 20; Suzanne, 14, and Michael Lee, 10.

#### CONCESSION PRICE LIST

|                        |                 |
|------------------------|-----------------|
| Cold Drinks . . . . .  | 25 and 50 cents |
| Hot Dogs . . . . .     | 35 cents        |
| Hamburgers . . . . .   | 50 cents        |
| Candy . . . . .        | 10 cents        |
| Gum . . . . .          | 10 cents        |
| Popcorn . . . . .      | 25 cents        |
| Peanuts . . . . .      | 15 cents        |
| Potato Chips . . . . . | 15 cents        |
| Cotton Candy . . . . . | 25 cents        |
| Coffee . . . . .       | 15 cents        |
| Sno-Cones . . . . .    | 15 cents        |
| Programs . . . . .     | 50 cents        |

U.T. El Paso and our official concessionaire hope you enjoy the game and your refreshments.

All concession employees have an identification badge and number and you are asked to patronize only these sanctioned vendors.

#### BOB LEE

Bullet Bob Lee, a big, personable guy with muscles of a weight man, is the third member of Coach Bobby Dobbs' staff who was a former junior college head coach.

Lee, who will again serve as the tutor for the Miners' defensive down people (middle guards and tackles), joined the Texas-El Paso staff last season after a successful stand as head coach at Arizona Western.

Lee joined the Miners after a four year tour at Arizona Western — the last two as head coach.

A native of Salt Lake City and a 1958 graduate of Utah, Lee compiled a 15-4-1 record during his two years as head coach at the Yuma based school.

One of the wins was a 20-7 conquest of Henderson County (Texas) in the National Junior College Bowl game at Las Vegas in 1967.

Prior to his stop at Arizona Western, Lee had coached at Orem (Utah) High School where he served as assistant football and head wrestling coach.

After three years at Orem, Lee moved to Carbon Junior College at Price, Utah for the 1962-63 seasons before joining the Arizona Western staff in 1964.

He married the former Jane Kitchen of Salt Lake City, and the couple are the parents of three children, a girl, Tammy, 6, and a boy, Doug, 3 and Linda, 1.



#### BOBBY'S LIEUTENANTS

##### JIM BLEVINS

If Coach Bobby Dobbs picked his assistant coaches for size, depending upon the job they are assigned, Jim Blevins should be able to handle the man-size task of the offensive line this fall.

Blevins, a 6-4, 285-pound native of Moulton, Ala., joins the Flyin' Miners this fall after a four year engagement as head coach of Jacksonville State, Jacksonville, Ala. His appointment was July 1 and he replaced Bill


Turnbow who returned to Mississippi State.

The new offensive line coach has more experience than a con man. He played at and coached for Alabama before going to Jacksonville.

After two years at Alabama, Blevins moved on to Jacksonville where he served as an assistant for one year before being moved into the head chair.

He and his wife Rose are the parents of a nine-year-old son, David.






**charcoal**  
DRIVE-IN  
**RESTAURANT**

**4024 NORTH MESA**  
**9315 MONTANA**


# American

**FURNITURE STORES**

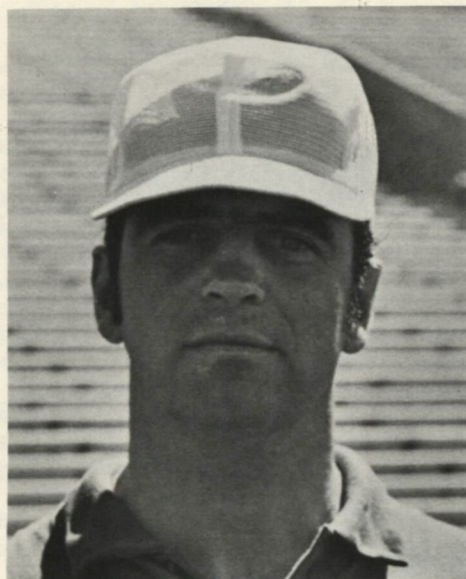
• Downtown • Northgate • Bassett



# DOBBS



## MR. COOL



PETE MANNING

Eight years as a professional player—experience not contained in a book—makes Pete Manning a valuable assistant to Coach Bobby Dobbs and the Flyin' Miners.

Manning, a quick-witted former split receiver and defensive back, again will handle the receivers for the Miners.

Actually, this is the second time Manning has been associated with Bobby Dobbs. The first was at Calgary of the Canadian League when Dobbs was the head coach and Manning was a receiver.

A 1960 graduate of Wake Forest,

the Washington, D. C., native was drafted by both Chicago (NFL) and Boston (AFL). He chose the Bears and played two seasons as a defensive back before being traded to Calgary.

Dobbs used Manning as split end where he was all-pro for three years—1962-63-64.

Sandwiched between his playing career were off-season coaching assignments during the spring at Wake Forest (1961 and 1963), Florida State (1962) and Michigan (1966).

A one-time confirmed bachelor, Manning married the former Susan Lidington, a Canadian, last winter.

## BOBBY'S LIEUTENANTS

J. D. PARTRIDGE

J. D. Partridge, a 1952 graduate of Texas-El Paso, will be in charge of the defensive ends and linebackers for the Flyin' Miners this season.

A native of Odessa, Partridge joined Coach Bobby Dobbs' staff after three seasons as head football and track coach at Irvin High School in El Paso.

Partridge was a two-time All-Border Conference defensive end while playing for the Miners. He also was chosen to the Little All-America honorable mention list two years.

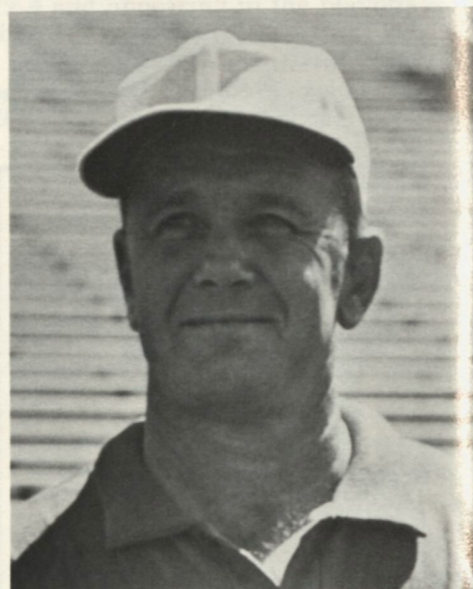
The former co-captain of the Miners launched his coaching career in the fall of 1952 at Victoria (Tex.) High School, serving under Fred Taylor, the present head coach at Texas

Christian University.

He joined former Texas-El Paso coach O. A. (Bum) Phillips at Amarillo high school for the 1961 season. He also served as the track coach at Amarillo during the 1961-62 seasons.

Following the 1962 season, Partridge returned to El Paso as an assistant head football coach and track mentor at Austin High School. He remained there for the 1963-64 seasons before going to Irvin High School as head coach, serving there through the 1968 campaign.

He and his wife Elsie are the parents of four children, Becky Louise, 17; Russell, 15; Gail, 11, and Phillip, 9.



DAVE NUSZ

The lone holdover from Coach Bobby Dobbs' original Texas El Paso staff, Dave (The Sheriff) Nusz has more duties than a circus hand.

Nusz, starting his fifth season at Minerland, serves as the assistant head coach, defensive backfield coach, heads up the overall defense, operates the film exchange and directs the recruiting dragnet.

He handles each job top drawer.

A Yankee with a passion for western folklore—hence his nickname—Nusz joined Dobbs' staff in 1965 after tours at William & Mary and Detroit.

He had spent three seasons at Detroit before the school folded its football program tighter than bark on a

tree.

The likeable guy was busier than a windmill in a West Texas windstorm at Maryland while lettering three years as a quarterback and defensive halfback.

He was a member of the great Maryland national championship team of 1953 when the Terps were meaner than a bag of rattlers. He was with two undefeated Maryland teams, 1953 and 1955.

A 37-year old native of Pittsburgh, Nusz was a top collegiate punter after lettering in three sports in high school.

He and his wife Bette are the parents of two children, Kerry, 12, and Tommy, 10.

## BOBBY'S LIEUTENANTS

WILSON KNAPP

Wilson Knapp, the offensive backfield coach, is like a guy with two personalities.

Off the field he is an easy-going, quick to laugh guy. On the field, he wouldn't give you the time of day if he owned the only time piece in the world.

Knapp, a 1951 graduate of New Mexico, joined the staff of Coach Bobby Dobbs in 1967 from New Mexico Military where he had served as head coach. His duties then, as this season, was to tutor the offensive backs and head up the overall offense.

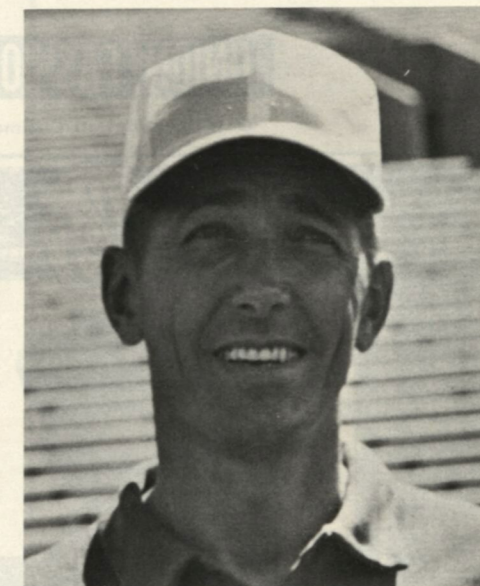
His 1967 offensive machine at Minerland led the nation in forward pass-

ing and scoring.

Upon graduation from New Mexico, Knapp spent brief tours as an assistant coach at Belen and Carlsbad, N. Mex., high schools before launching his head coaching rocket at Lovington, N. Mex. During his seven years at Lovington he produced three state champions.

During his last two years at NMMI, Knapp served as head football coach, athletic director and head of the school's physical education department.

Knapp and his wife Jean are the parents of four children, Sharon, 19; Dennis, 17; Sue, 13; and Sandy, Nine.



**SUN TRAVEL**

2805 EAST YANDELL  
EL PASO, TEXAS 79903

*"It's More Fun To Go Sun"*

Call Us for all Your Travel Needs

566-9366

HELEN SEMPLE • MARJORIE BRUMBELOW • MARY JANE THOMPSON  
SALLY STRELITZ • SUSAN MAGRUDER

**Club MOROCCO**

Cocktails — Dinners

Open 'til 2 a.m.

Four miles west from the Sun Bowl

In the Upper Valley

Turn Right on the Anapra Road

STEAKS • SEA FOOD • MEXICAN FOOD

**Ponder Insurance Agency**

JACK PONDER

&

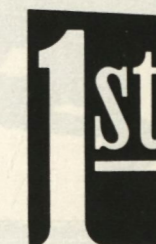
JIM PONDER

- AUTO
- FIRE
- CASUALTY
- BONDS

1810 Montana

533-3921

COMPLIMENTS OF



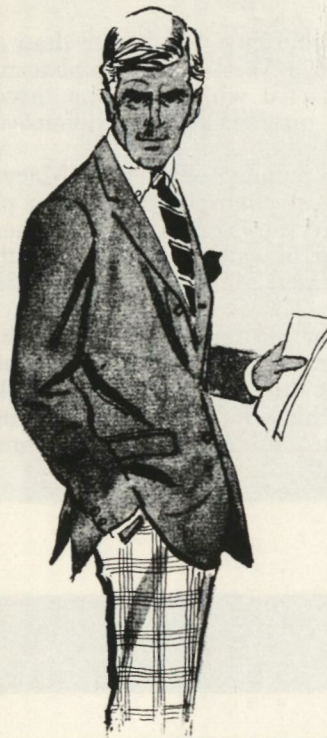
**FIRST STATE BANK**

"FIVE POINTS"

EL PASO, TEXAS

Member F.D.I.C.

# THE TOP MEN'S BRANDS FOR 77 YEARS



HART, SCHAFFNER & MARX  
HAMMONTON PARK  
OXXFORD · LOUIS ROTH  
LANSHIRE · PBM  
STANLEY BLACKER  
OLEG CASSINI  
PIERRE CARDIN  
AFTER SIX · LONDON FOG  
PALM BEACH · PURITAN  
HATHWAY · DONEGAL  
ARROW · GANT  
LORD JEFF · ZERO KING  
NETTLETON · JOCKEY  
JANTZEN · STETSON

**UNION FASHION**

Downtown/Bassett/Chelmont

## THE BANK THAT PUTS YOU IN THE CENTER OF THINGS



Each depositor insured to \$100,000  
**FDIC**  
FEDERAL DEPOSIT INSURANCE CORPORATION



**FRED  
SCHNEIDER  
PONTIAC**

**6015 MONTANA  
PHONE 778-5321**

THE WESTERN ATHLETIC  
CONFERENCE  
Suite 300  
Denver Hilton Office Bldg.  
1515 Cleveland Place  
Phone AC 303, 222-1743  
Wiles Hallock, Commissioner  
G. David Price, Information Director



### Members

ARIZONA . . . located in Tucson, one of the fastest growing areas of the Southwest . . . enrollment is 22,500 . . . Arizona Stadium seats 40,000 for football and Bear Down Gym holds 3,600 for basketball with a new gym in the immediate prospect . . .

ARIZONA STATE . . . located in Tempe, an integral part of the vast Phoenix metropolitan complex 21,400 enrollment . . . Sun Devil Stadium holds 43,125 for football. Gym seats 5,000 for basketball . . .

BRIGHAM YOUNG . . . located in Provo, Utah, 44 miles Southeast of Salt Lake City . . . enrollment is approximately 20,000 . . . Cougar Stadium seats 30,892 for football, Smith Field House holds 10,800 for basketball . . .

COLORADO STATE . . . located in Fort Collins . . . enrollment is approximately 15,600 . . . New CSU stadium seats 30,000 for football and CSU Auditorium houses 9,500 for basketball . . .

NEW MEXICO . . . located in Albuquerque, the population hub of New Mexico . . . enrollment is 12,186 . . . University Stadium seats 30,000 for football, University Arena seats 14,831 for basketball . . .

UTAH . . . located in Salt Lake City, one of the largest metropolitan areas in the Rocky Mountain-Southwest . . . enrollment is 16,930 . . . Ute Stadium seats 30,000 for football, Einar Nielsen Field House holds 6,000 for basketball, with a new arena in the works . . .

U. T. EL PASO . . . located in El Paso, Texas, a rapid growing city on the U.S. Mexico border . . . enrollment 11,000 . . . Sun Bowl seats 30,000 for football, County Coliseum holds 8,200 for basketball . . .

WYOMING . . . located in Laramie, only 130 miles North of Denver, Colo., the largest population center in the Rockies . . . enrollment is 6,800 . . . Memorial Stadium holds 20,000 for football, Memorial Field House seats 11,000 for basketball . . .

## TRAINER



ROSS MOORE

If Ross Moore, the multi-talented trainer at Minerland, had all of the tape he has used on hands, ankles and knees in one pile, he would:

- 1) Make Johnson and Johnson consider a third partner.
- 2) Require a building comparable to O'Hare Air Terminal to store it.

The keen witted Moore arrived in Minerland in 1936 as a junior college transfer. Those who played with and against him, say Moore was meaner than a bucket of red ants and losing came to his mind about as often as water runs uphill.

Moore is one of the few four sport lettermen in Miner history and probably is the last such athlete at the school on the hill.

He earned letters in football, basketball, track and baseball. This is harder to do than filling a lake with an eye dropper.

Upon graduation, Moore joined the coaching staff at his alma mater and later assumed the duties as trainer and track coach. He also served as head basketball coach.

His last coaching assignment ended in 1966 when he turned his track program over to young Wayne Vandenburg. He now devotes full time to his training duties.

It is the opinion of the coaches that Moore has a knack of getting the injured back into action than water disappears from a quarter car wash.

He and his wife Kathleen are the parents of a married daughter, Marilyn, and are now grandparents.

## SEE YOUR COLLEGE RING AT



**ZALES**  
JEWELERS

## OPEN A COLLEGE-BUDGET ACCOUNT

TEXAS AT MESA

112 MILLS

CHELMONT CENTER

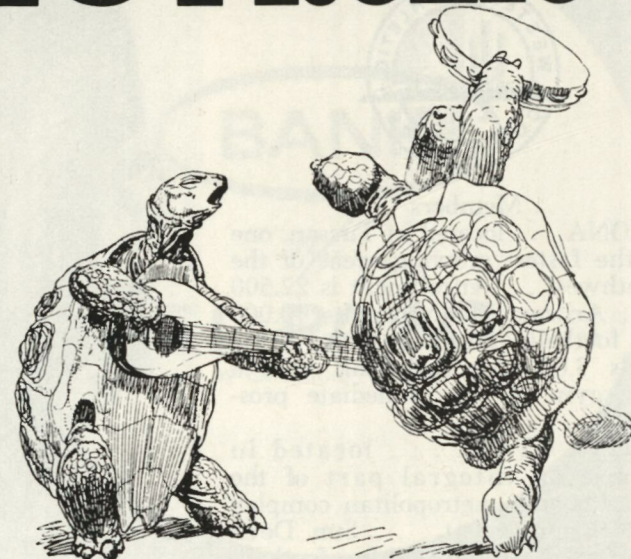
SUNRISE CENTER

STANTON AT 6TH

TIGUA

LAS CRUCES

# PLAY • DANCE • SNOOZE • SWIM • FEAST & FROLIC



Convention fun begins when you check-in at the Hilton Inn! Accommodations for 757 for banquets, 900 for meetings. For hours away from meetings, Color TV in every room, 18-hole putting green, swimming pools, Skyriders Club for dining and dancing. Courtesy car service to the airport. For complete information, call: Hilton Inn, 778-4241.

CHECK OUR LOW  
PRICES ON



KERN PLAZA CENTER  
3100 N. MESA

- PRESCRIPTIONS
- COSMETICS
- CAMERAS
- FILM
- STEREO TAPES
- RECORDS
- DRUGS



- TOBACCO
- SMALL APPLIANCES
- SCHOOL SUPPLIES
- CANDY
- SUNDRIES
- GREETING CARDS
- BABY NEEDS

FOR PRESCRIPTIONS PHONE 533-6883  
FOR STORE INFORMATION 533-5449

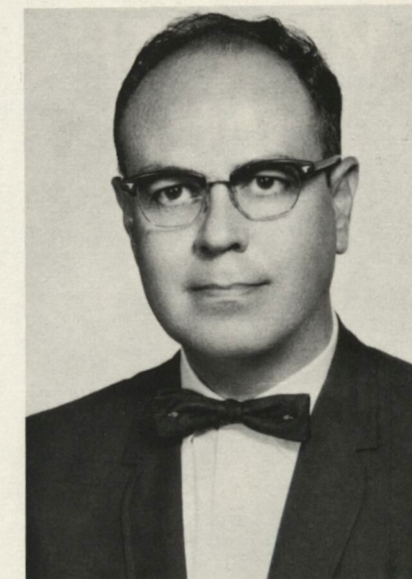
(STADIUM SEATS AND ALKA-SELTZER ALSO ON SALE)

## GEORGE GREEN INSURANCE AGENCY

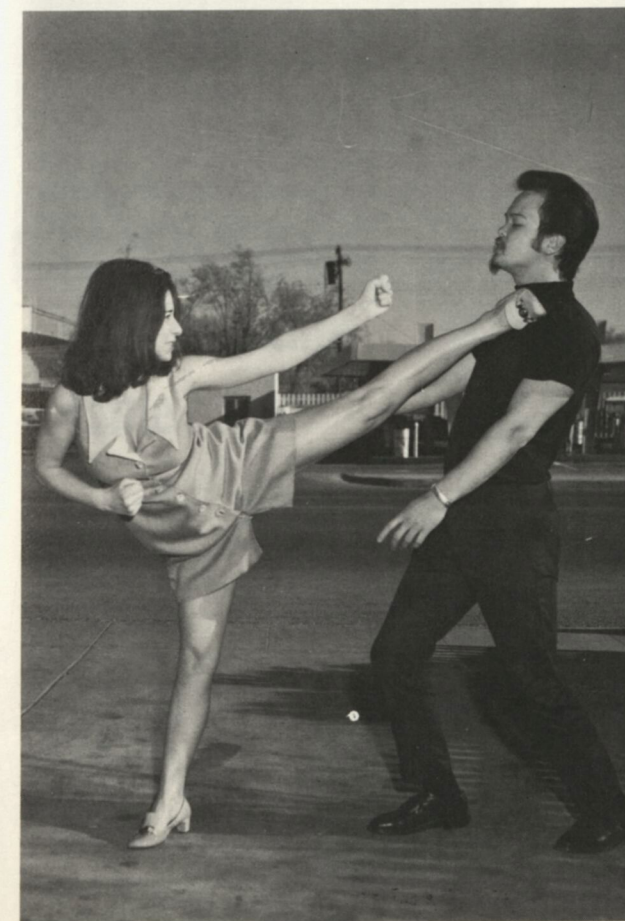
- ALL TYPES OF GENERAL INSURANCE
- MAJOR COMPANIES REPRESENTATIVE

P. O. BOX 47

565-6457



## SUPPORT THE MINERS



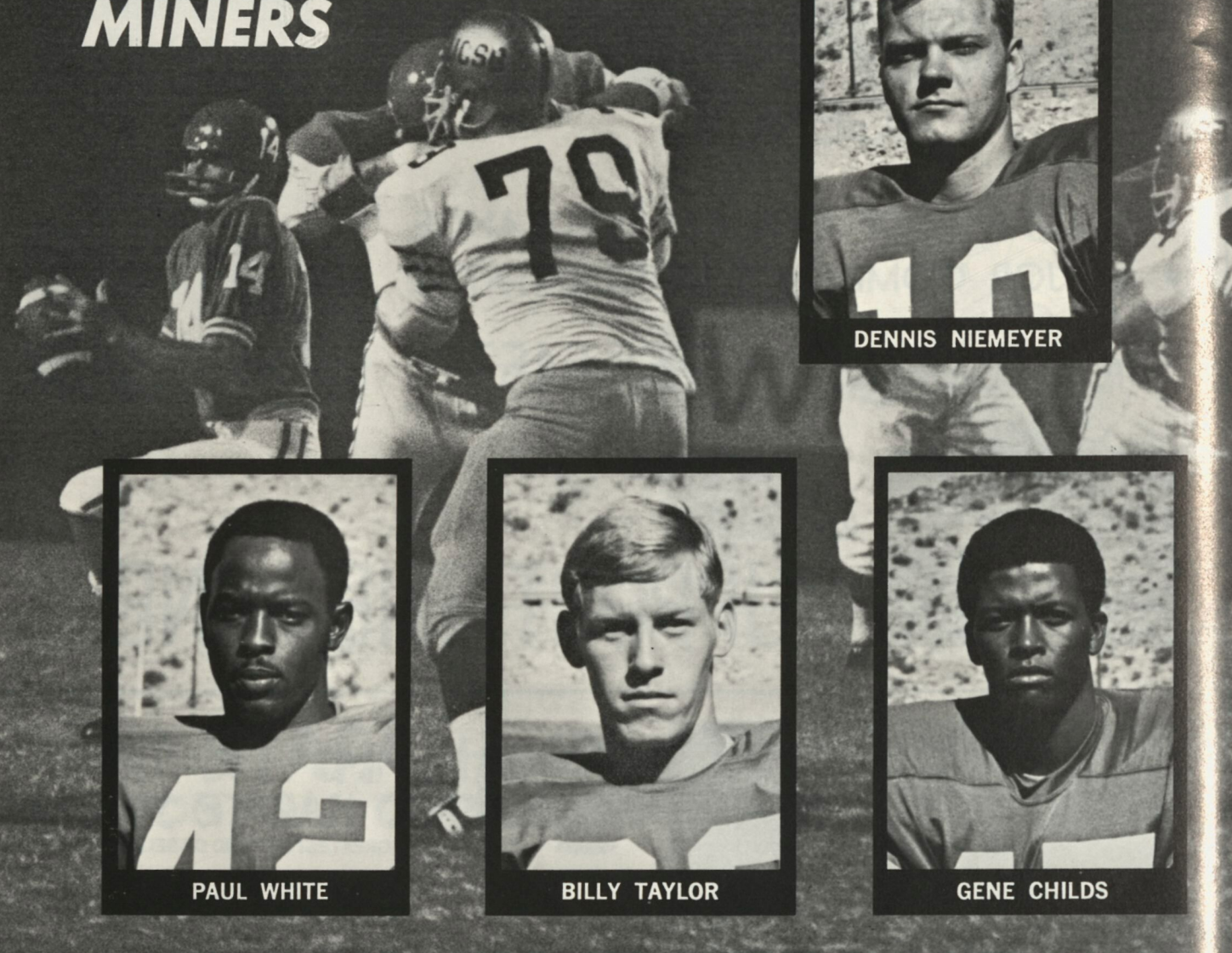
**KARATE INC.**  
**KENPO KARATE STUDIO**  
• THE WORLD'S GREATEST METHOD OF SELF DEFENSE •

*Learn From Professionals*

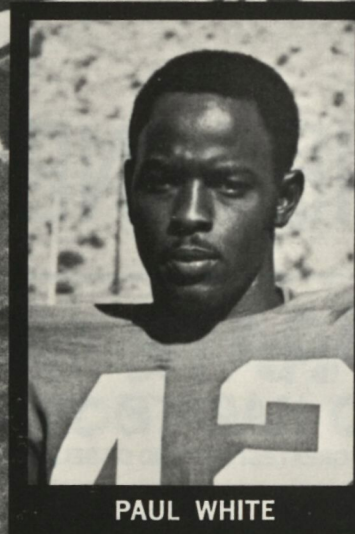
**FOR INFORMATION & FREE DEMONSTRATION  
PHONE...566-1633**

COMPLETE FACILITIES—MEN—WOMEN—CHILDREN  
10 A.M. TO 10 P.M.  
**WEIGHT ROOM** 3525 PERSHING DRIVE **SAUNA BATH**

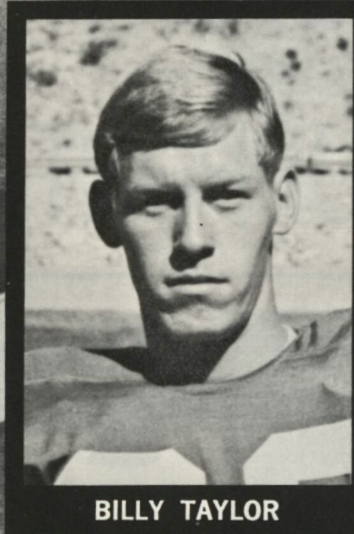
# MEET THE MINERS



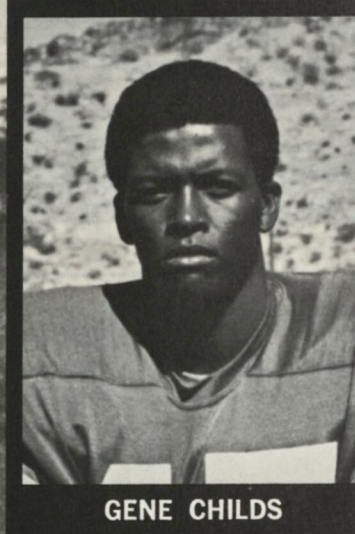
DENNIS NIEMEYER



PAUL WHITE



BILLY TAYLOR



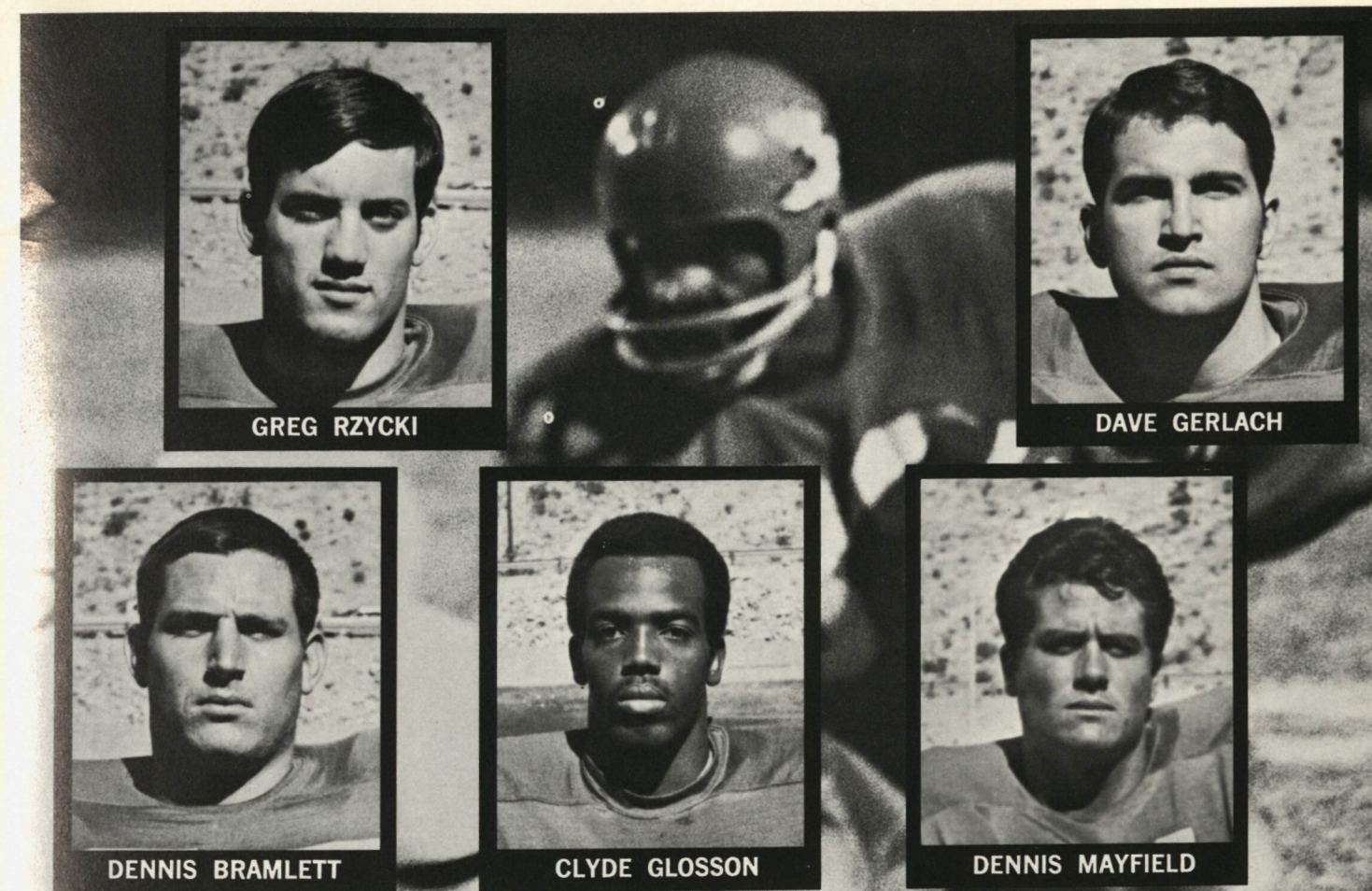
GENE CHILDS

WHERE CHEVROLETS  
SELL FOR LESS

AND ARE SERVICED BEST

YOUR NEIGHBORS — 3003 NORTH MESA

**RUDOLPH**  
CHEVROLET



GREG RZYCKI

DAVE GERLACH

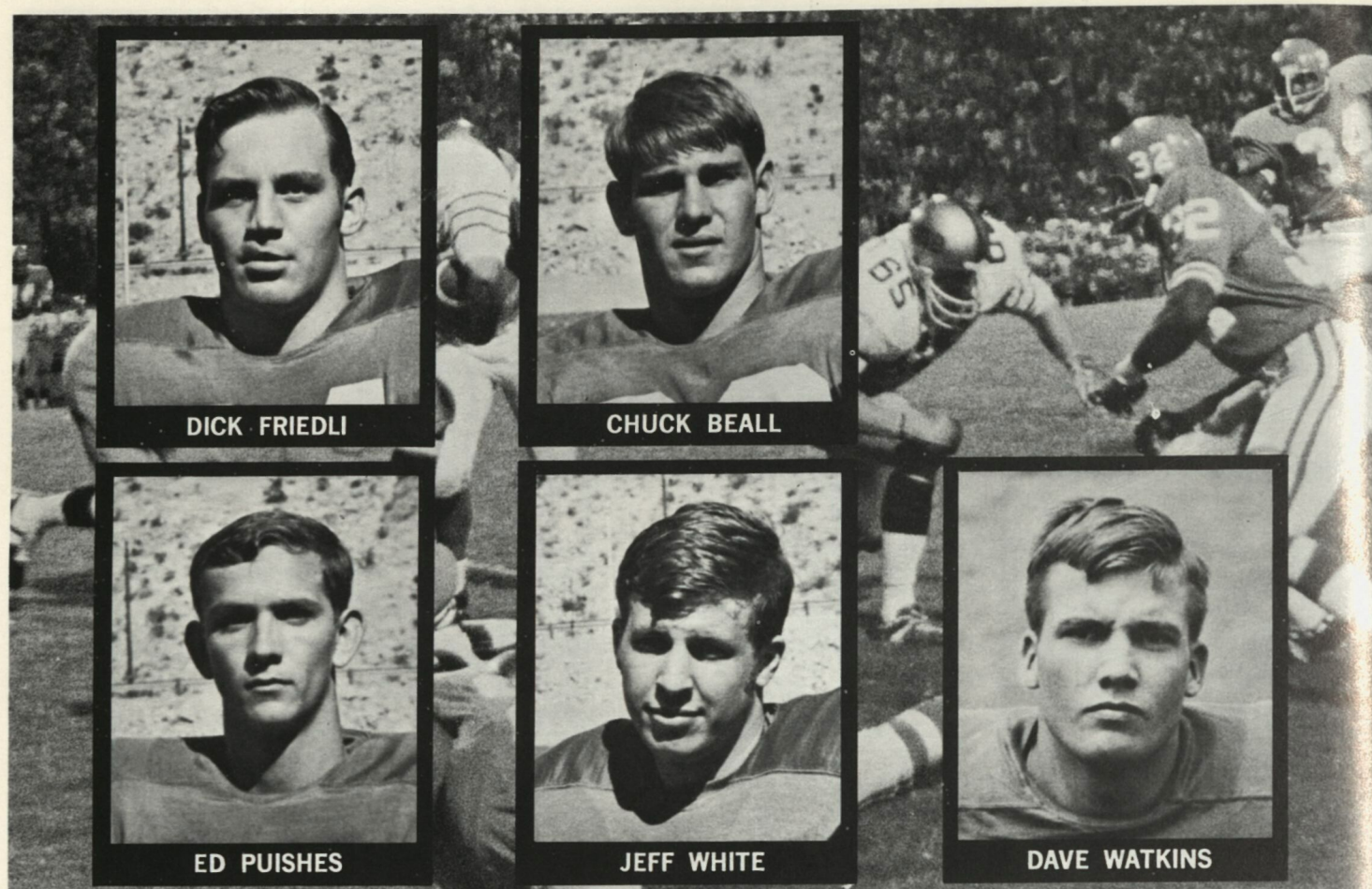
DENNIS BRAMLETT

CLYDE GLOSSON

DENNIS MAYFIELD

Eat like the pros...  
put N.F.L. protein power on  
your training  
table!





DICK FRIEDLI

CHUCK BEALL

ED PISHES

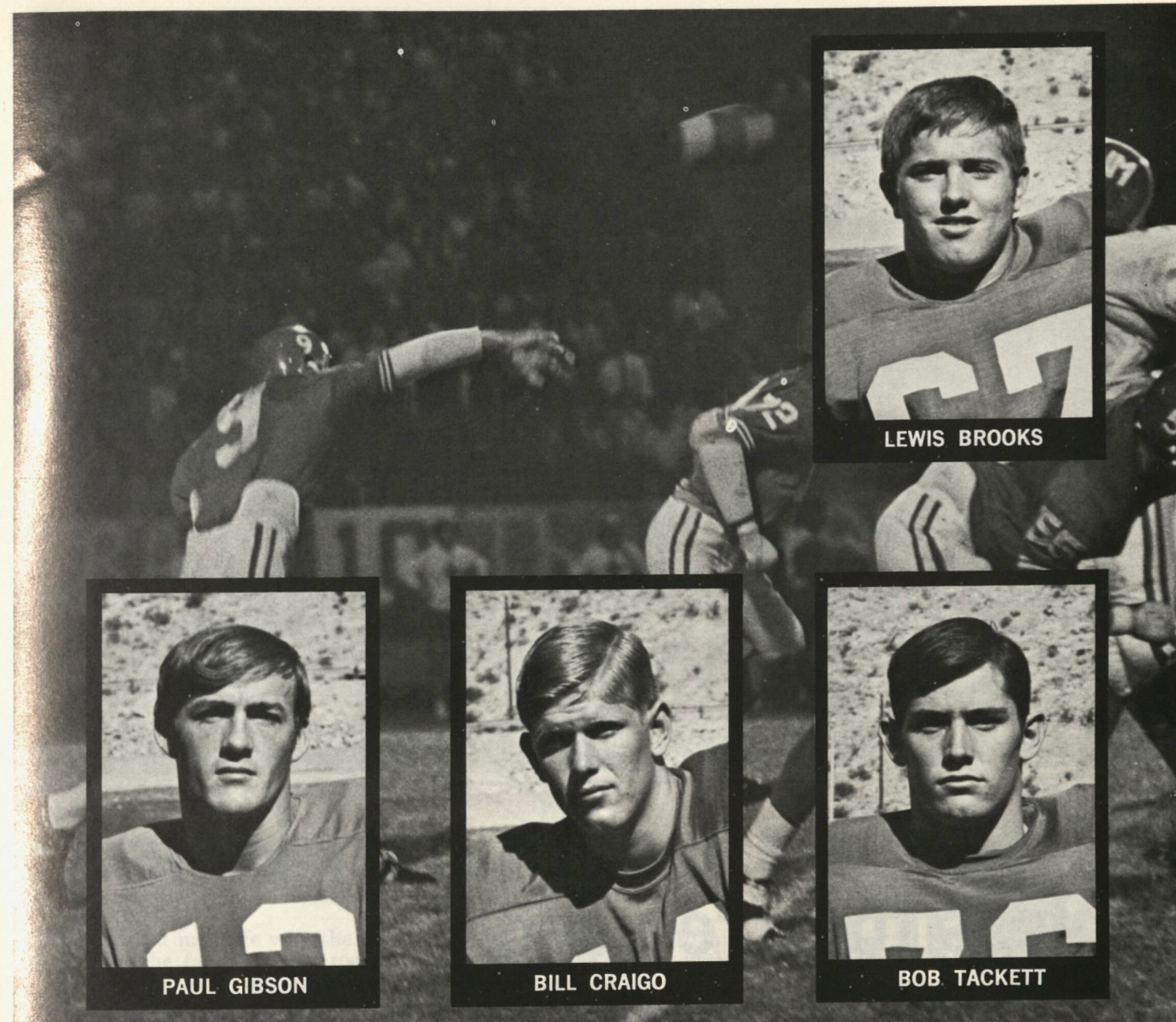
JEFF WHITE

DAVE WATKINS

# power play

1000 kilowatts flood  
the Sun Bowl with  
day-like brightness!

EL PASO ELECTRIC COMPANY



LEWIS BROOKS

PAUL GIBSON

BILL CRAIGO

BOB TACKETT

## Betty's House of Travel

BETTY and FRED MUMM  
Owners



KAY WILLIAMS  
FLORIDA SCHULLER  
CONSTANCE HARRISON



PHONE 542-1641 • EL PASO NATIONAL BANK BLDG. • EL PASO, TEXAS 79901



JIM FABISH

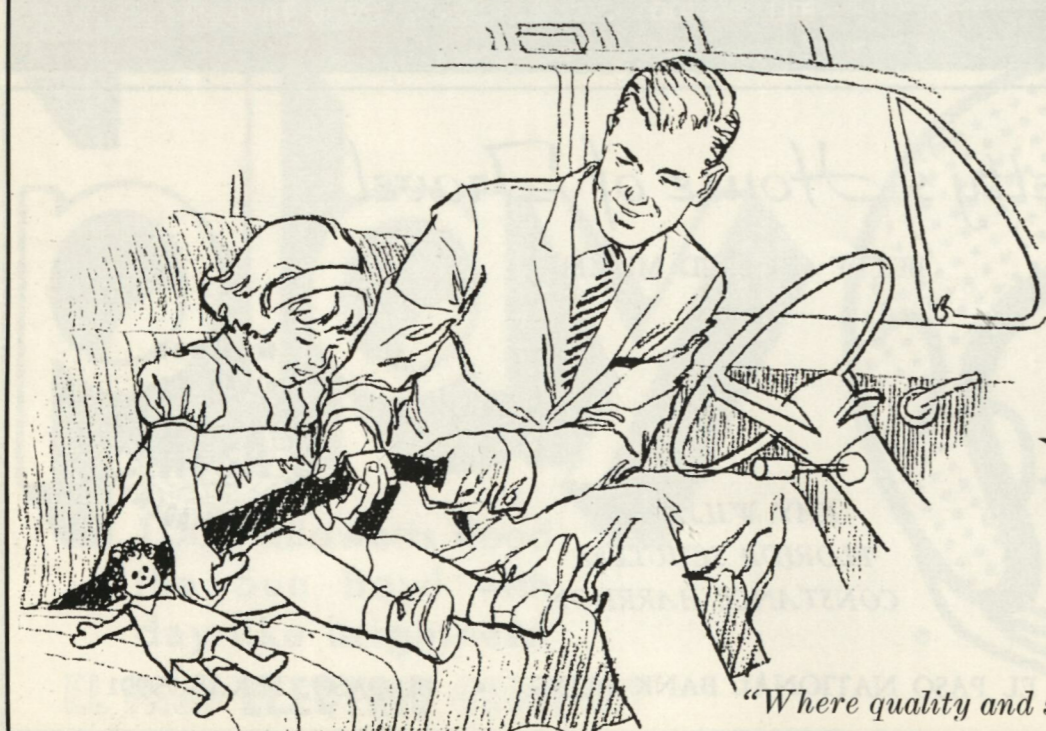
GENE MACK

JIM SANSON

CALVIN TAYLOR

DON CROFT

## Seat belts are not safety belts... unless they're used!



Buckle up...  
Gene Horn Olds wants  
your family safe.



6330 Montana 778-7711

"Where quality and service go hand in hand"

## Pity The Poor Official

By DAVID PRICE  
WAC Director of Information

The humor and hazards of officiating stretch far beyond the boundaries of a football field.

John Adams, who officiated in the Western Athletic, Big Eight and Sky-line Conference for 20 years before he became WAC supervisor of officials last year, can recall many zany moments on and off the field.

"Ed Flint of Denver and I were traveling to Laramie to work a game and were immersed in a rules discussion," Adams relates, "Ed's wife, Virginia, was with us and naturally had time to say during a conversation such as this one.

"We stopped to buy gas and Virginia excused herself to go to the rest room. Ed and I continued our rules discussion, paid the attendant, and hit the road again.

"It wasn't until we approached Laramie that Ed discovered Virginia's absence. She was waiting back at the filling station, presumably wondering what had happened and possibly deciding what to tell her lawyer," laughs Adams.

Adams also can laugh at his own wife's antics.

He tells of the time he asked Barbara how she reacted when the fans were in a raucous mood one afternoon.

"I booed along with them," she answered.

Sometimes, however, wives can be more coy.

"I once asked my wife why she refused to tell the fans sitting around her that her husband was an official on the field," recalls Ray Ball, a back judge from Denver and commissioner of the Colorado State High School Activities Association.

"Do you think I'm crazy?" she responded.

Ingenuity is a trait of many officials working games.

Joe Paulson, a referee from Denver, once discovered that he had failed to pack any black hose with his uniform. Game time was imminent. But the enterprising Paulson quickly solved the dilemma.

He grabbed a bottle of shoe polish, swabbed his legs in black, and worked the game without further incident.

There are many fans who sometimes dream of shooting the officials, but no official has come closer to getting shot than Bill Schmitz.

Schmitz, who is the father of the Colorado State fullback of the same name, was working as back judge deep in the end zone one day. The home team punched across a touch-

down and the gleeful fans fired a nearby cannon in celebration.

Schmitz was standing so close to the cannon that pellets ripped through his pants, causing him grave (sorry about that) concern.

But no delay occurred in the game. Schmitz worked the rest of the day in air conditioned pants.

Adams also recalls a tale about a basketball official working in Denver who committed the rare sin of blowing his whistle too hard.

"One of the things an official constantly is told is not to have a 'weak' whistle—to sound it loudly," Adams explains.



"This official let go with a strong blast—and his dentures flew out and skidded downcourt."

That story reminded Adams of a person who may be college officiating's only "triple-threater."

"This official was working a football game and got involved in a long play," Adams relates. "He spotted a foul near the line of scrimmage and threw his flag at the spot of foul.

"A few yards farther he saw another violation and dropped his cap on the spot.

"Still farther down, he saw a third infraction. It seemed that he had nothing left to mark the spot. But he rose to the occasion.

"Without hesitancy he ripped off his toupee and flung it to the spot."

Accolades from fans are hard to come by, so one can excuse Tom Saracino of Denver for taking advantage of the following situation.

Saracino was a spectator in the stands at this game, enjoying the lack of pressure. One of the officials on the field made a call which proved very popular among the fans.

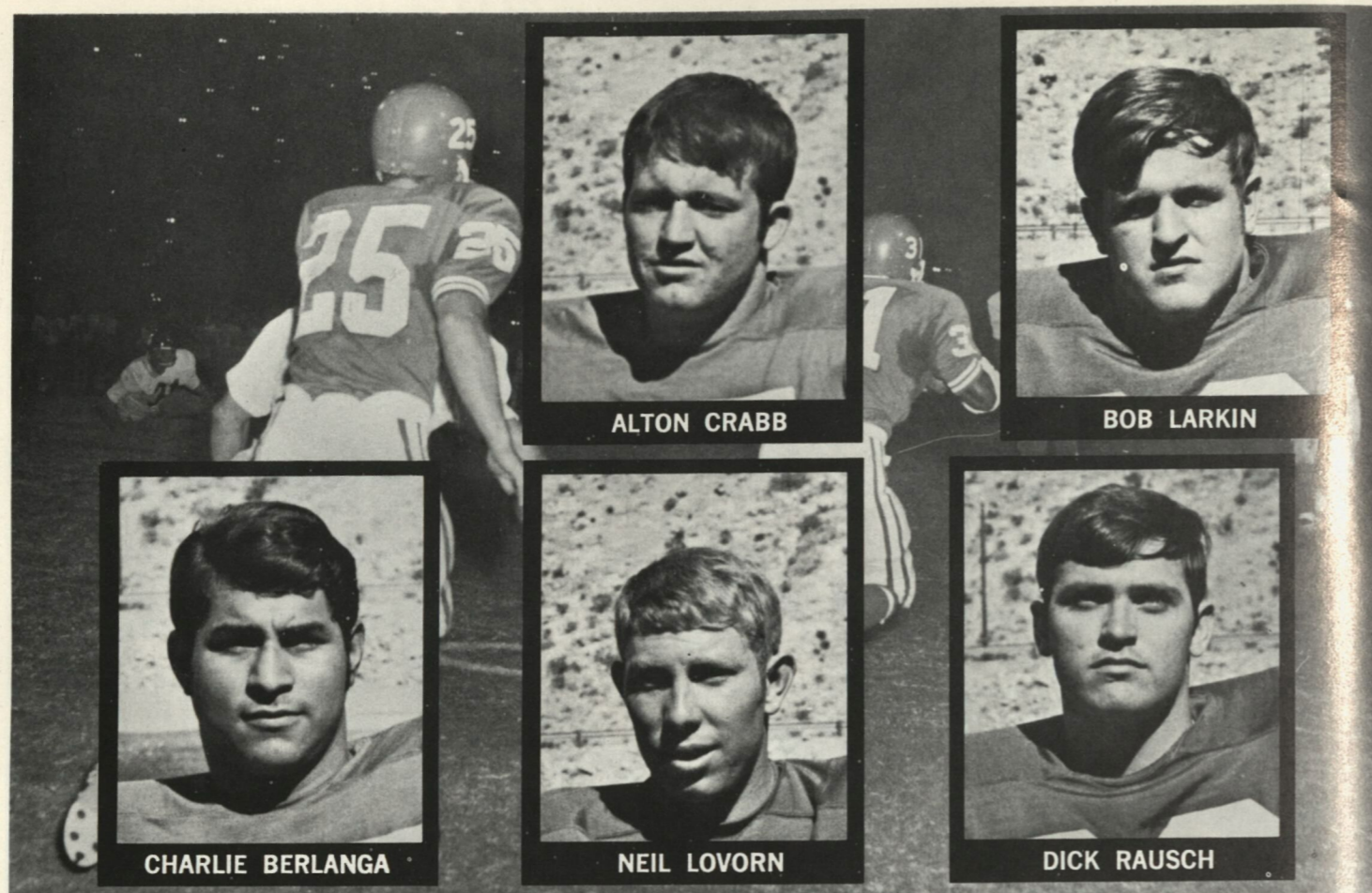
"A great call," enthused one fan. "Who made that great call?"

"Tom Saracino," bellowed Saracino.

# BREAK a GLASS?

# CALL BAKER GLASS!

2 CONVENIENT LOCATIONS  
4015 MONTANA AVE.  
NORTHGATE  
5013 WREN



ALTON CRABB

BOB LARKIN

CHARLIE BERLANGA

NEIL LOVORN

DICK RAUSCH

# Break your beard in right.

Right now your beard is in the formative stage.

You can shave it with a razor blade like your father does. And each time you do your beard will grow back a little more difficult. Until one day shaving's no longer a chore. It's an agony.



Look no further than your father's face for proof.

But fortunately, you're catching your beard at an early age. You can break it in to be just as shaveable 10 and 20 years from now as it is today.

With a REMINGTON® shaver.

And if you think the kind of shave we're selling won't be close enough for you, you're wrong.

Our new blades are sharper than anything that's been in an electric shaver before. And there's a dial that lets you adjust them for your skin and beard.

What's more, you can dial a REMINGTON electric shaver into a sideburn trimmer.

Admittedly, it costs more to buy our electric shaver than a razor and some blades.

But it's a good investment.

These next few years will determine how you and your beard will get along for the rest of your lives.†SPERRY RAND® ©1969 S. R.



REMINGTON  
ELECTRIC SHAVING DIVISION, BRIDGEPORT, CONNECTICUT

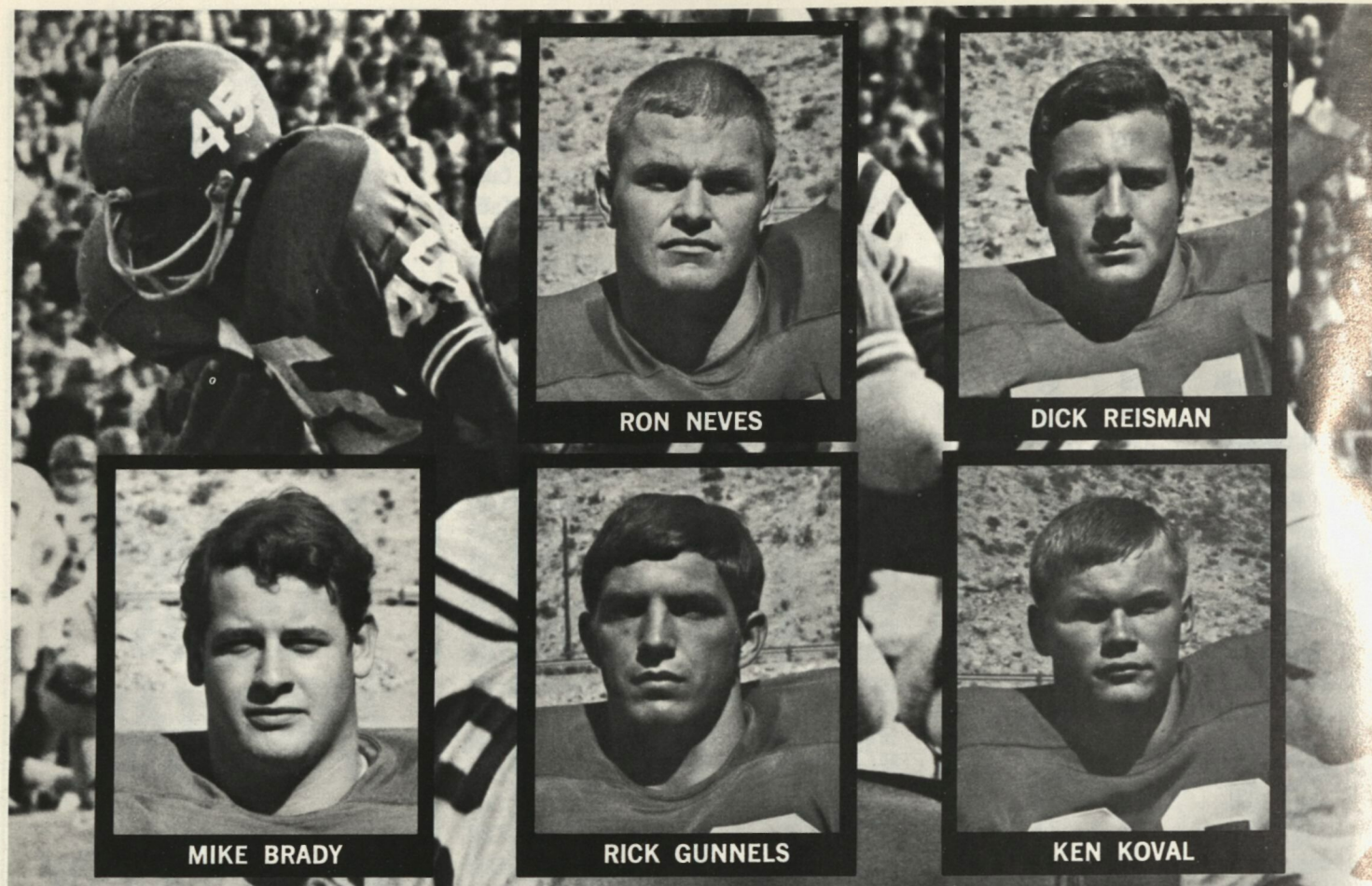


*Chili Con Queso and Chili Bean . . .  
a great team of dips for a  
spicy pre-game warmup.  
Top your post-game celebrations  
with a crowd pleasing winner . . .  
an Ashley's gourmet buffet.*

**Ashley's**  
OF TEXAS

FINEST QUALITY CANNED MEXICAN FOODS  
"PACKED IN EL PASO — SOLD ALL OVER THE WORLD"





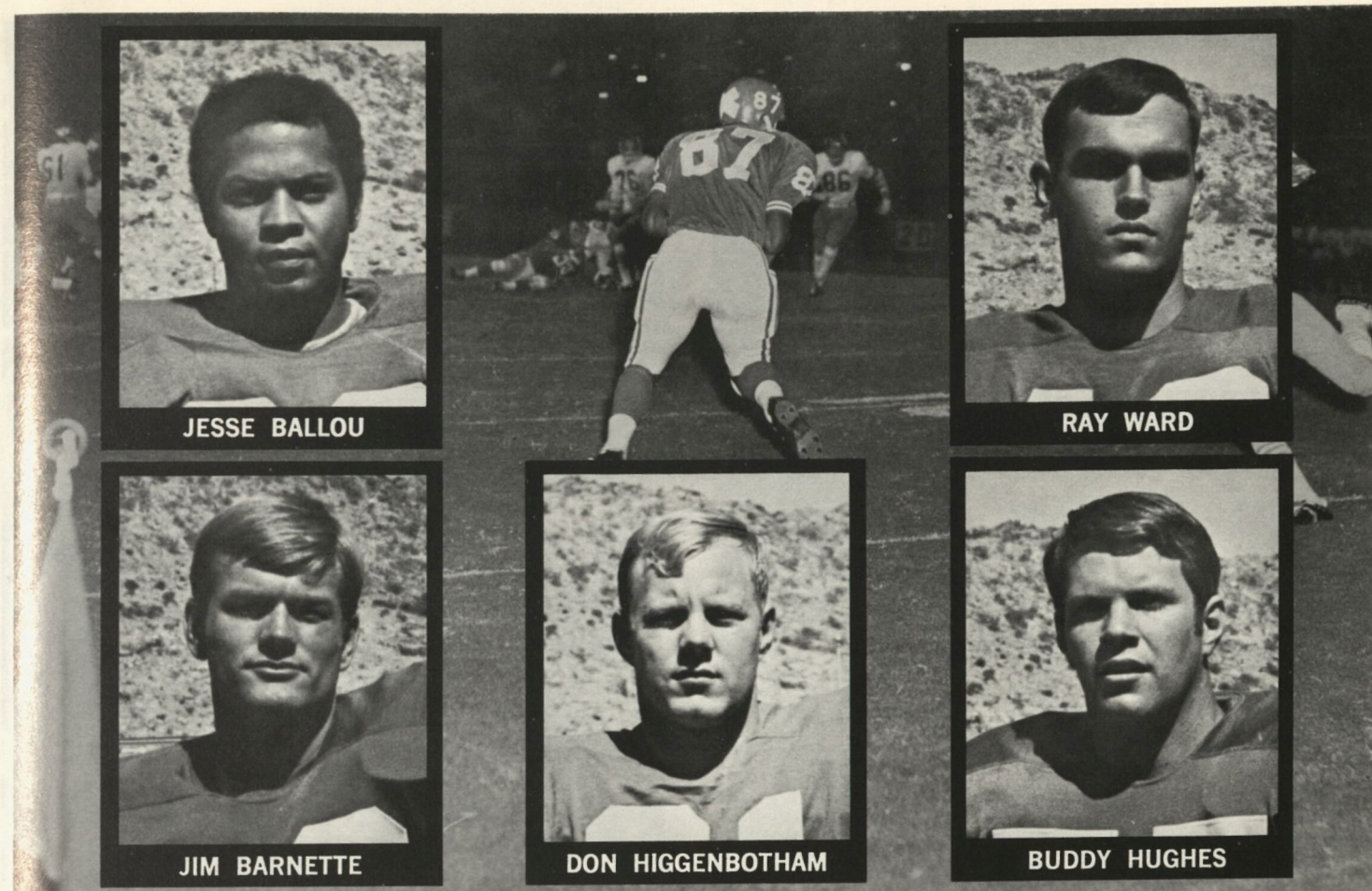
RON NEVES

DICK REISMAN

MIKE BRADY

RICK GUNNELS

KEN KOVAL



JESSE BALLOU

RAY WARD

JIM BARNETTE

DON HIGGENBOTHAM

BUDDY HUGHES

## JERRY WOLFE'S RESTAURANTS

SERVING FINE FOODS

EL PASO  
RODEWAY INNS  
INTERSTATE 10 AT GERONIMO  
9487 DYER STREET



LAS CRUCES  
MISSION INN  
1765 SOUTH MAIN ST.



PARTIES • BANQUETS • CATERING



COME ON IN...the savings  
are worth seeing.....

**AARONSON BROS.**

APPAREL FOR MEN, WOMEN & CHILDREN  
DOWNTOWN • YSLETA • LAS CRUCES  
ALAMOGORDO

## VALLEY FOODS COMPANY

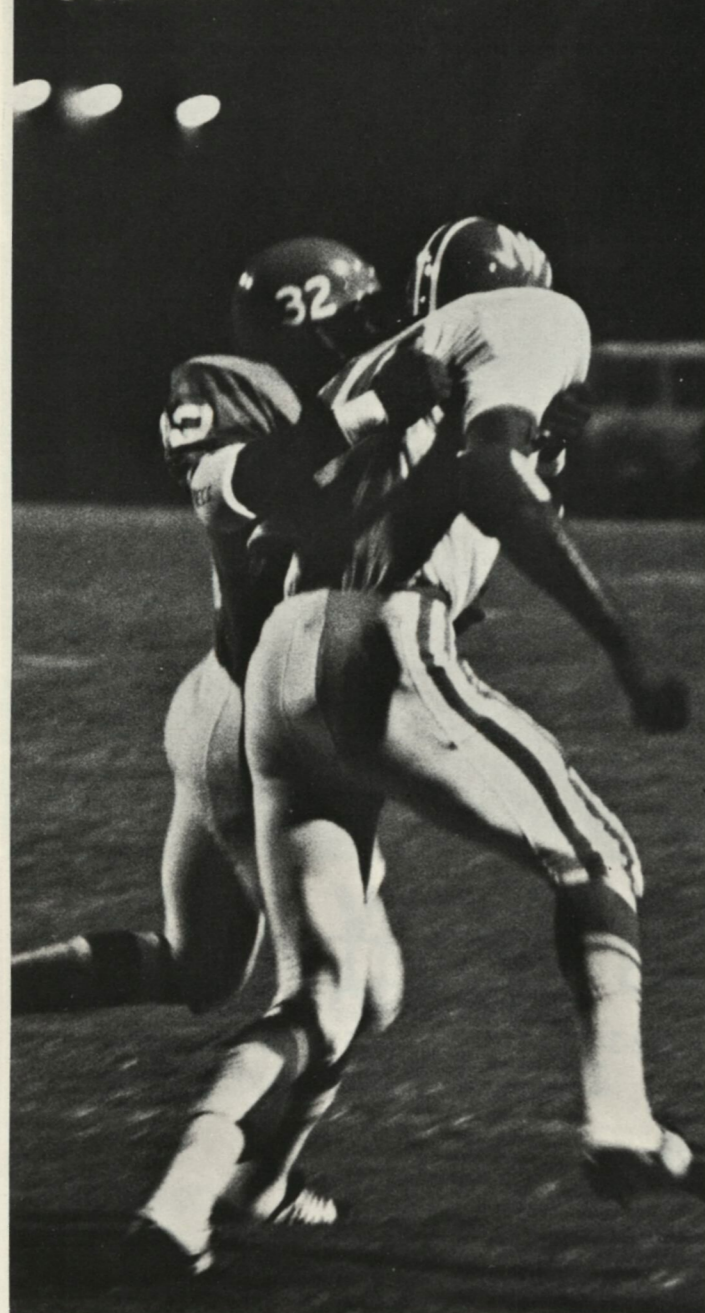
216 SOUTH FLORENCE STREET • 915 / 532-3485 • EL PASO, TEXAS 79901



Quality Institutional Products

**WAC' EM MINERS!**

## Scenes From The Past



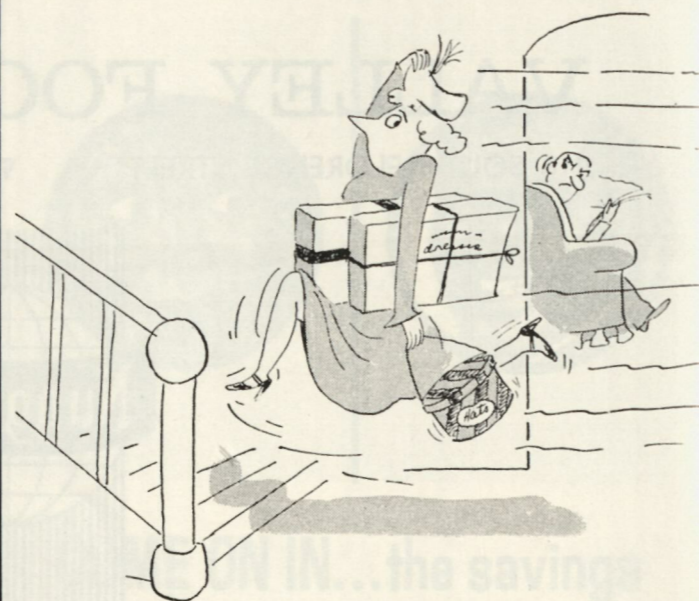
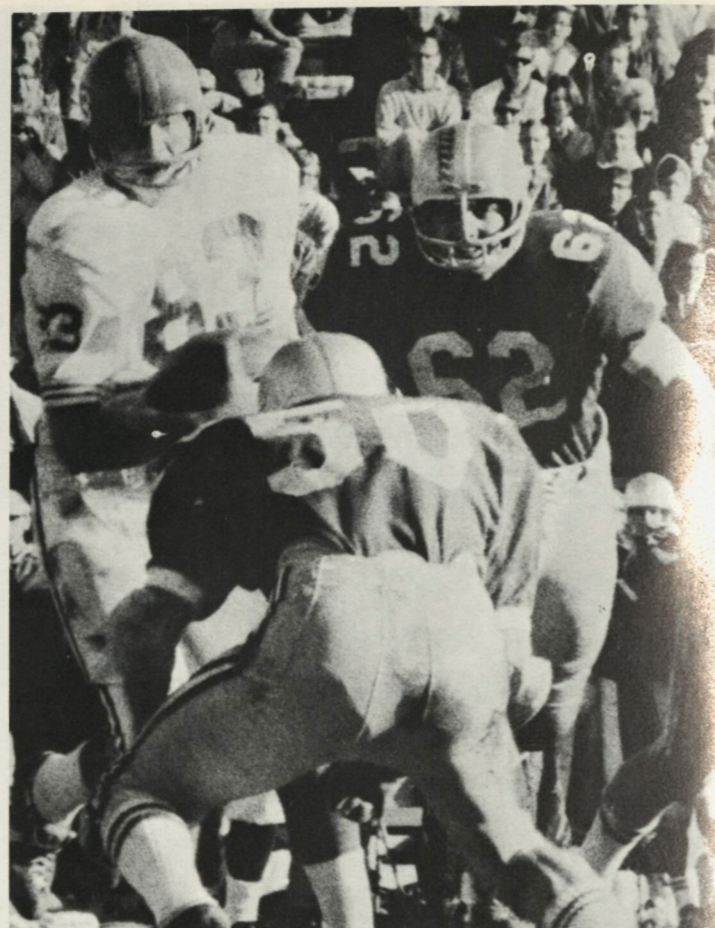
**Harry Phillips**

**SHELL SERVICE**

Official State Inspection Station

•  
COMPLETE  
AUTOMOTIVE SERVICE

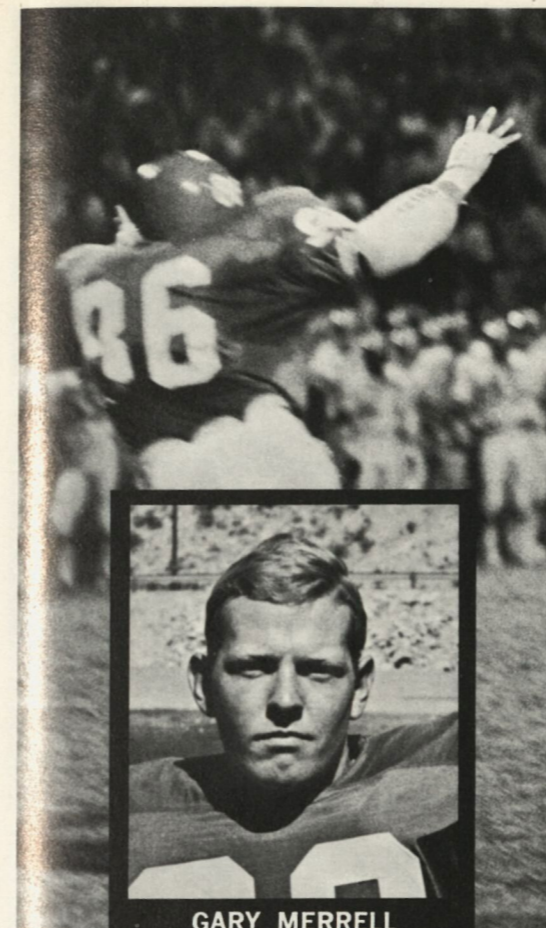
2800 North Mesa — Dial 533-4771



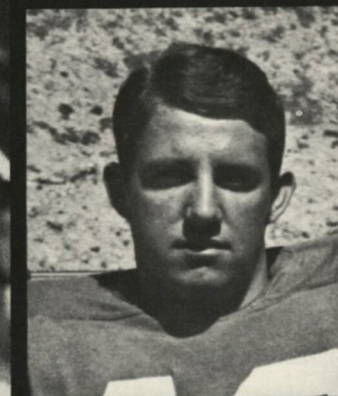
WE DELIVER ALL YOUR PURCHASES—  
MAKES IT MUCH EASIER ON YOU!

**the white house**

DOWNTOWN • BASSETT



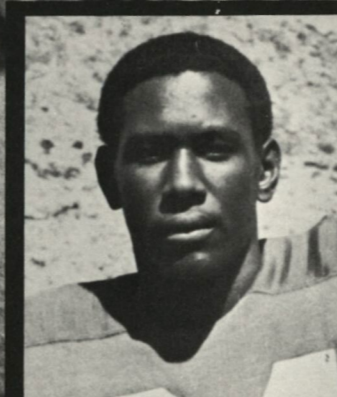
JAIME CHAVANDO



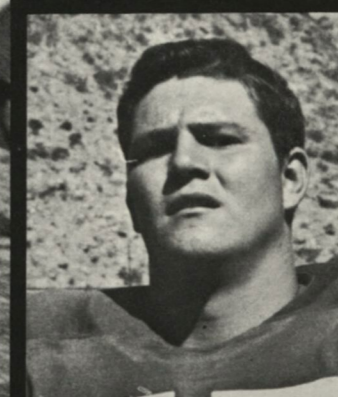
MIKE REYNOLDS



GARY MERRELL



ERIC WASHINGTON



MURRAY FOSTER

## BASSETT SHOPPING CENTER

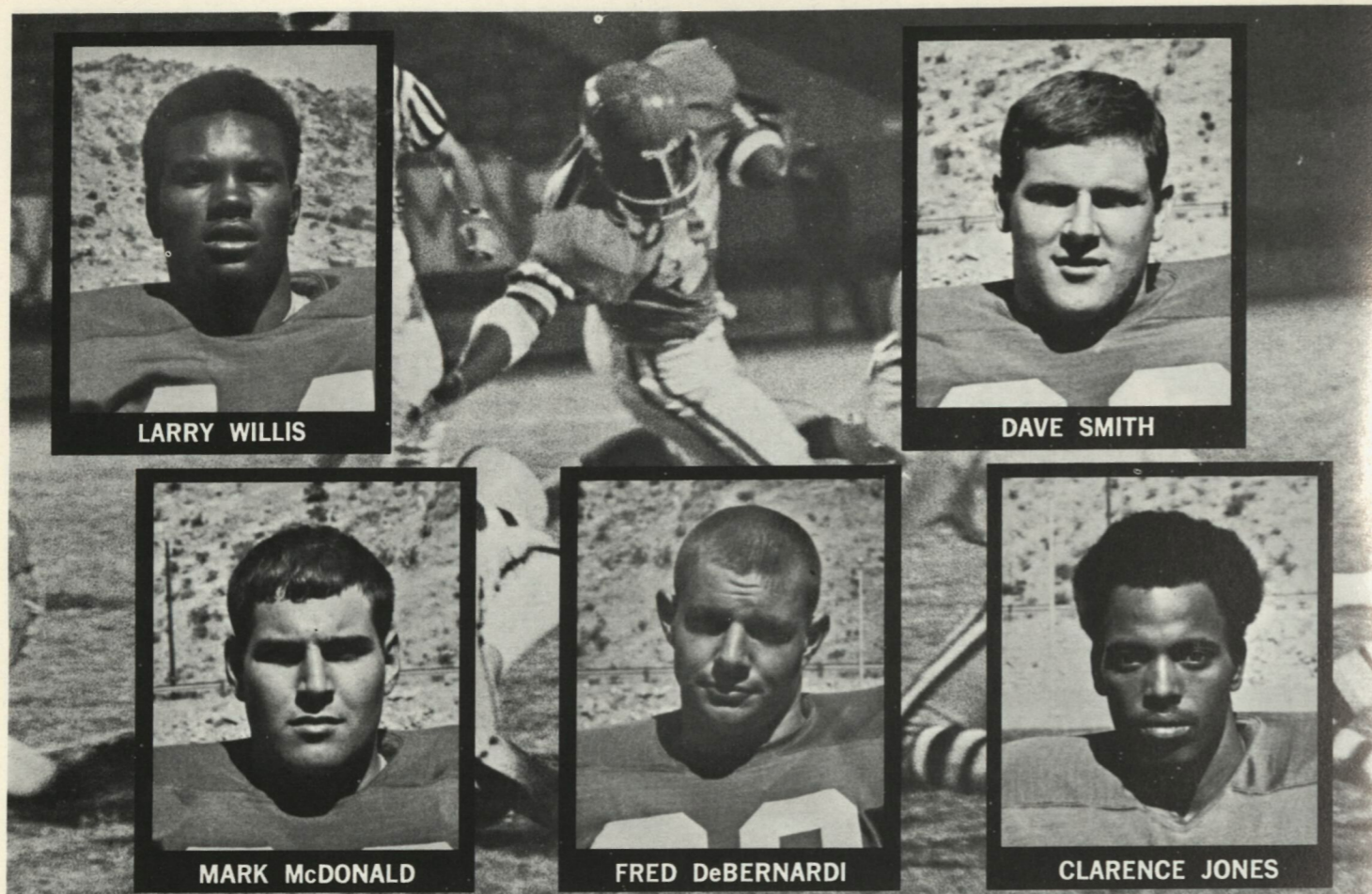
INTERSTATE 10 EAST  
EL PASO, TEXAS



55 STORES  
&  
SERVICES

4500  
PARKING  
SPACES

OPEN TILL 9:00 P.M.  
MONDAY, THURSDAY AND FRIDAY  
BASSETT—In the center of everything,  
with everything in the center.

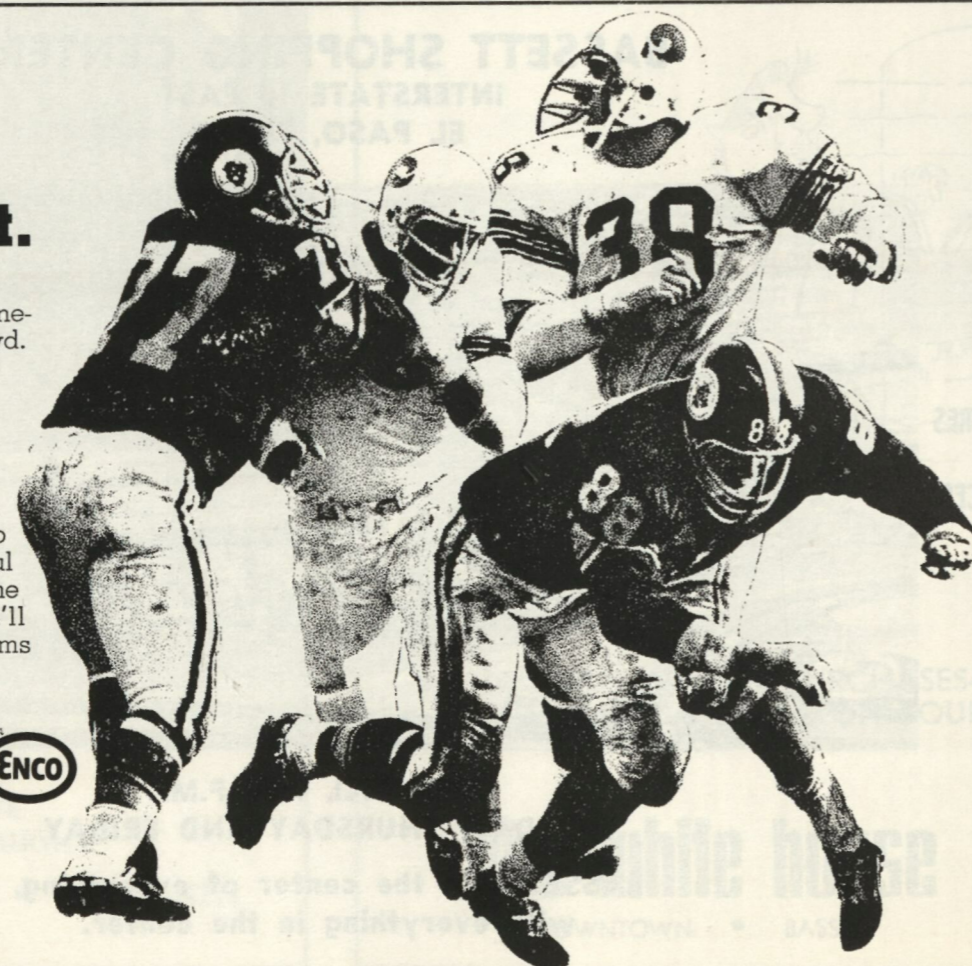


## College football at its best.

The thunder of blitzing line-men. The roar of the crowd. And the perfect play for the touchdown. That's just a part of exciting college football!

Another part is getting to and from the game. And the best way to do just that is with a tankful of Enco Extra. Try it at the Enco sign. Where you'll also find clean rest rooms and the best in service.

**HUMBLE**  
Oil & Refining Company  
Where you get all the extras.

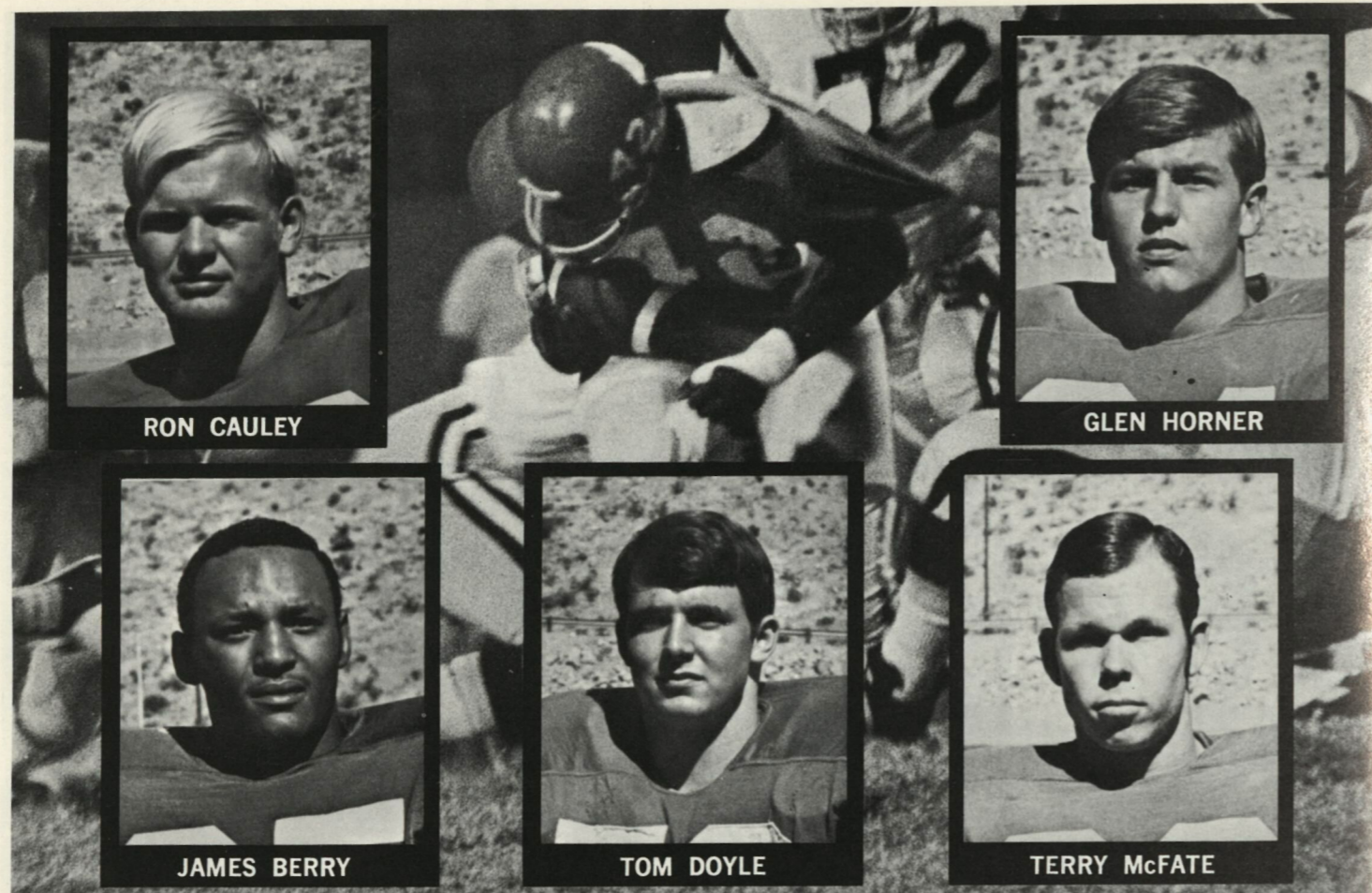


## Ski Skeller Sports

SOUTHWESTERN  
PROFESSIONAL  
SPORTS  
CENTERS

•  
SKIING  
SCUBA  
TENNIS  
ARCHERY  
WATER - SPORTS

EL PASO • DALLAS • MIDLAND • LUBBOCK • LAS CRUCES • RUIDOSO



RON CAULEY

GLEN HORNER

JAMES BERRY

TOM DOYLE

TERRY McFATE



PAUL WILSON

JOHN CAMPBELL

MIKE ROBINSON

## CRYSTAL CLEANERS

THE ULTIMATE IN  
SERVICE AND QUALITY

Branches

3321 FORT BLVD.  
507 MONTANA  
6122 TROWBRIDGE  
600 S. PARK  
611 N. STANTON  
8300 DYER

OFFICE and PLANT

1601 WYOMING  
DIAL 533-2842



## DOG RACING!

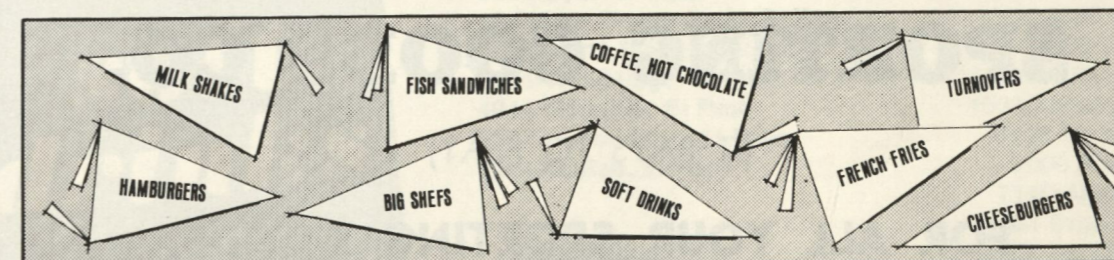
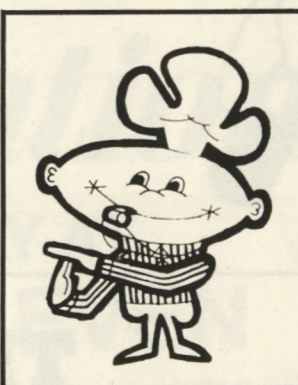
Good luck to the Miners from the "Sport of Queens"! When you're not watching the Miners, join us at Juarez Race Track for exciting Greyhound races. Nightly Wednesday through Sunday.



*in Old Mexico*

INFORMATION AND FREE  
PASSES: EL PASO OFFICE, 310 N.  
Mesa (in the Cortez Hotel) Phone  
532-6251

## Take a time out for BURGER CHEF



6175 Alameda  
9571 Dyer  
8320 Dyer  
1235 McRae

2120 N. Mesa  
6315 N. Mesa  
6625 Montana  
5155 Stanton



FOOD GOOD ENOUGH TO LEAVE HOME FOR

## PENALTIES



1.—OFFSIDE by either team; Violation of scrimmage or free kick formation; Encroachment on neutral zone—Loss of Five Yards.

2.—ILLEGAL PROCEDURE, POSITION OR SUBSTITUTION—Putting ball in play before Referee signals "Ready-for-Play"; Failure to complete substitution before play starts; Player out-of-bounds when scrimmage begins, or on free kick formation; Failure to maintain proper alignment of offensive team when ball is snapped; False start or simulating start of a play; Taking more than two steps after Fair Catch is made; Player on line receiving snap; Free kick out-of-bounds—Loss of Five Yards.

3.—ILLEGAL MOTION—Offensive player illegally in motion when ball is snapped—Loss of Five Yards.

4.—ILLEGAL SHIFT—Failure to pause one full second in shift play—Loss of Five Yards.

5.—ILLEGAL RETURN — Infraction of substitution rule—Loss of Five Yards.

6.—DELAY OF GAME — Consuming more than 25 seconds in putting the ball in play after it is declared ready-for-play; Failure to remove injured player for whom excess timeout was granted; Crawling — Loss of Five Yards. Team not ready to play at start of either half—Loss of 15 Yards.

7.—PERSONAL FOUL—Tackling or blocking defensive player who has made fair catch; Piling on; Hurdling; Tripping; Grasping face mask of opponent; Tackling player out-of-bounds, or running into player obviously out of play; Loss of 15 Yards. (Flagrant offenders will be disqualified.)

8.—CLIPPING—Loss of 15 Yards.

9.—ROUGHING THE KICKER or holder—Loss of 15 Yards.

10.—UNSPORTSMANLIKE CONDUCT — Striking an opponent with fist, forearm, elbow

or locked hands; Kicking or kneeling—Loss of 15 Yards (offenders will be disqualified); Violation of rules during intermission; illegal return of disqualified player; Coaching from side lines; Invalid signal for Fair Catch; Persons illegally on field — Loss of 15 Yards. (Flagrant offenders will be disqualified.)

11.—ILLEGAL USE OF HANDS AND ARMS by offensive or defensive player — Loss of 15 Yards.

12.—INTENTIONAL GROUNDING of forward pass—Loss of Five Yards from spot of pass Plus Loss of Down.

13.—ILLEGAL FORWARD PASS OR ILLEGAL HANDING BALL FORWARD — Loss of Five Yards from spot of foul Plus Loss of Down.

14.—FORWARD PASS OR KICK CATCHING INTERFERENCE — Interference with opportunity of player of receiving team to catch a kick—Loss of 15 Yards. Interference by member of offensive team on forward pass—Loss of 15 Yards Plus Loss of Down. Interference by defensive team on forward pass—Passing Team's Ball at Spot of Foul and First Down.

15.—INELIGIBLE RECEIVER DOWN-FIELD ON PASS—Loss of 15 Yards.

16.—BALL ILLEGALLY TOUCHED, KICKED OR BATTED—Forward pass being touched by ineligible receiver beyond the line of scrimmage—Loss of 15 Yards from Spot of Preceding Down and Loss of a Down. Eligible pass receiver going out-of-bounds and later touching a forward pass — Loss of Down; Illegally kicking the ball—Loss of 15 Yards; Illegally kicking or batting a free ball—Offended team's ball at Spot of Foul.

17.—INCOMPLETE FORWARD PASS—Penalty declined; No play or no score.

18.—HELPING THE RUNNER, or interlocked interference—Loss of 15 Yards.

## CODE OF OFFICIALS' SIGNALS

|                                                                   |                                        |                                                     |                                                      |
|-------------------------------------------------------------------|----------------------------------------|-----------------------------------------------------|------------------------------------------------------|
| 1<br><br>Offside (Infraction of scrimmage or free kick formation) | 2<br><br>Illegal Procedure or Position | 3<br><br>Illegal Motion                             | 4<br><br>Illegal Shift                               |
| 5<br><br>Substitution Infractions                                 | 6<br><br>Delay of Game                 | 7<br><br>Personal Foul                              |                                                      |
| 8<br><br>Clipping                                                 | 9<br><br>Roughing the Kicker           | 10<br><br>Non-contact Fouls                         |                                                      |
| 11<br><br>Illegal use of Hands and Arms                           | 12<br><br>Intentional Grounding        | 13<br><br>Illegally Passing or Handing Ball Forward | 14<br><br>Forward Pass or Kick Catching Interference |

## CODE OF OFFICIALS' SIGNALS

|                                                                                                      |                                                                    |                                                                           |                  |
|------------------------------------------------------------------------------------------------------|--------------------------------------------------------------------|---------------------------------------------------------------------------|------------------|
| 15<br><br>Ineligible Receiver Down Field on Pass                                                     | 16<br><br>Ball Illegally Touched, Kicked, or Batted                | 17<br><br>Incomplete Forward Pass, Penalty Declined, No Play, or No Score |                  |
| 18<br><br>Helping the Runner, or Interlocked Interference                                            | 19<br><br>Ball Dead; If Hand is Moved from Side to Side: Touchback | 20<br><br>Touchdown or Field Goal                                         | 21<br><br>Safety |
| 22<br><br>Time out; Referee's Discretionary or Excess Time Out followed with tapping hands on chest. | 23<br><br>First Down                                               | 24<br><br>Ball Ready for Play                                             |                  |
| 25<br><br>Start the Clock                                                                            | 26<br><br>Loss of Down                                             | 27<br><br>Player Disqualified                                             |                  |

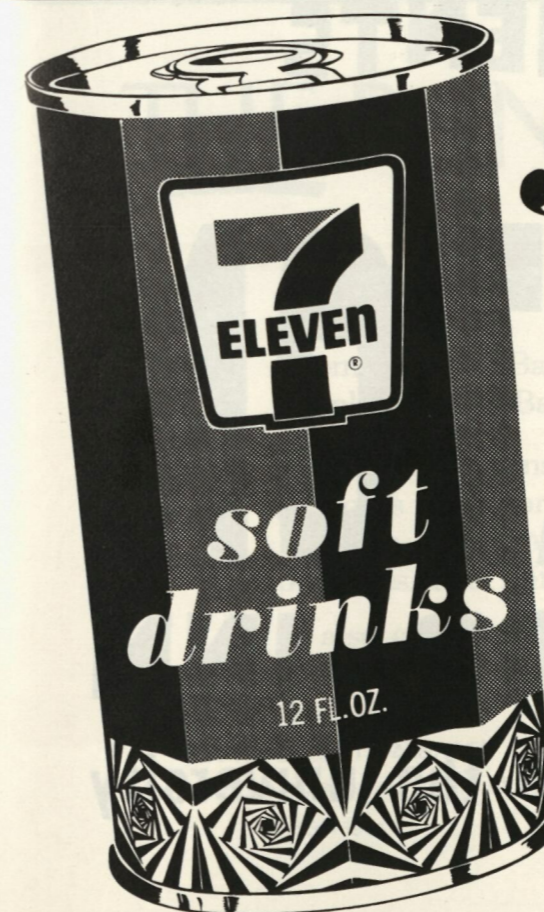
## THE EL PASO SPORTING GOODS CO.

(IT PAYS TO PLAY)

FOR ALL YOUR SPORTING GOODS,  
HUNTING AND FISHING NEEDS

Phone 533-9585

WATCH FOR OUR NEW LOCATION



# Sip-sational®

ONLY AT  
7-ELEVEN

5600 Dyer, El Paso  
104 Little Flower Road, El Paso  
2601 North Stanton, El Paso  
5001 Trowbridge, El Paso  
4944 Hercules, El Paso  
5307 Hondo Pass, El Paso  
1224 McRae, El Paso

5030 Fairbanks, El Paso  
9830 Dyer, El Paso  
5208 Teton, El Paso  
111 McCarthy Ave., El Paso  
10318 McCombs, El Paso  
6108 No Mesa, El Paso  
2000 Piedras, El Paso  
7140 Alameda, El Paso  
1601 Brown St., El Paso  
2906 Fort Blvd., El Paso  
10305 Medwood, El Paso



DIVISION OF THE SOUTHLAND CORPORATION



**EATABLES**

**SLEEPABLES**



**REFRESHMENTS**

Phone 533-2211

**SHERATON**

**EL PASO MOTOR INN**



next door to the university

## THE MARCHING CAVALCADE

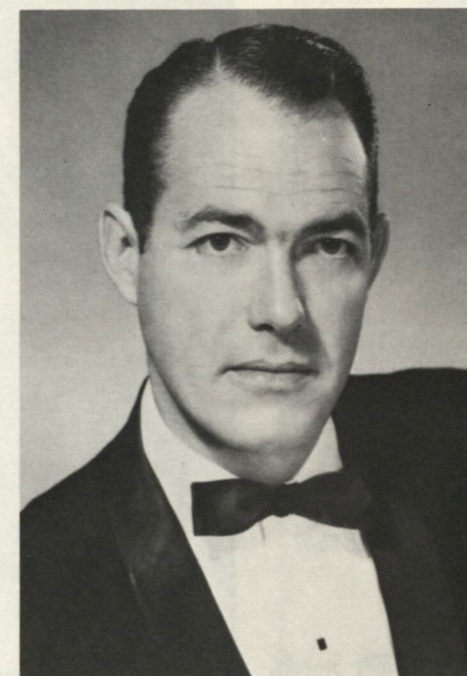
The musical entertainment for tonight's game — and at all Flyin' Miners home contests — is furnished by the U. T. El Paso famed Marching Cavalcade.

Under the direction of Harold Hillyer, the man who has brought to El Paso seven successful High School Band Nights, the Marching Cavalcade numbers 175 in addition to five alternates, two drum majors and three featured twirlers, plus the 40 members in the precision dancing Goldiggers.

The distribution of the band's instrumentation includes 60 brass, 55 woodwinds, and 10 percussion.

It has become a tradition for the Cavalcade to enter the stadium with precision marching followed by a salute to the visiting school and playing of the Star Spangled Banner for the flag raising ceremonies. Halftime ceremonies are equally impressive. In addition to the snappy marching and colorful picture formation and music, a dance routine by the Goldiggers has become anticipated by spectators.

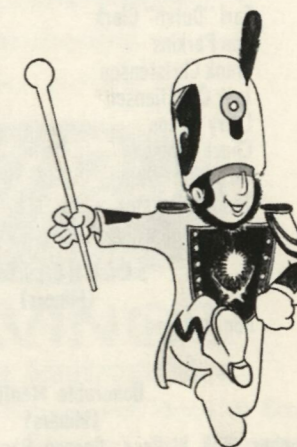
Hillyer holds degrees from Wichita State University and University of Southern California.



HAROLD HILLYER

He has served as instrumental and vocal director in the public schools in Colorado, Missouri and New Jersey. He also has served as guest conductor, adjudicator and clinician in the three states as well as many others in the western part of the country.

Hillyer is starting his eighth year with the Cavalcade.



## THE BANKERS LIFE

**That's us.**

From now on, Bankers Life Company of Des Moines will be known simply as The Bankers Life.

More than 50 insurance companies have "Bankers" in their name, but ours is the original. We're also the largest. We think this gives us the right to call ourselves The Bankers Life.

It also gives us a lot to live up to.

EL PASO AGENCY

ELVIN FORREST, MANAGER

600 EL PASO NATIONAL BANK BLDG.

533-6961



**THE BANKERS LIFE**

BANKERS LIFE COMPANY DES MOINES, IOWA

# ALL-TIME ROCKY MOUNTAIN-SOUTHWEST FOOTBALL TEAM FIRST TEAM

| Pos.       | Player                  | School            | Years         |
|------------|-------------------------|-------------------|---------------|
| End        | Hank Stanton            | Arizona           | 1939-40-41    |
| End        | Phil Odle               | Brigham Young     | 1965-66-67    |
| Tackle     | Merlin Olsen            | Utah State        | 1959-60-61    |
| Tackle     | Thurman McGraw          | Colorado State U. | 1947-48-49    |
| Guard      | Dale Dodrill            | Colorado State U. | 1947-48-49-50 |
| Guard      | Curley Culp             | Arizona State     | 1965-66-67    |
| Center     | Tom Greenfield          | Arizona           | 1936-37-38    |
| Center     | Elmer Henry "Bear" Ward | Utah State        | 1932-33-34    |
| Linebacker | Ron Pritchard           | Arizona State     | 1966-67-68    |
| Linebacker | Fred Carr               | Texas-El Paso     | 1965-66-67    |
| Linebacker | Wayne Hansen            | Texas-El Paso     | 1947-48-49    |
| Off. Back  | Byron "Whizzer" White   | Colorado          | 1935-36-37    |
| Off. Back  | Earl "Dutch" Clark      | Colorado College  | 1927-28-29    |
| Off. Back  | Don Perkins             | New Mexico        | 1957-58       |
| Off. Back  | Frank Christenson       | Utah              | 1930-31-32    |
| Def. Back  | Jack Christiansen       | Colorado State U. | 1949-50       |
| Def. Back  | Larry Wilson            | Utah              | 1957-58-59    |
| Def. Back  | Chuck Lamson            | Wyoming           | 1960-61       |
| Def. Back  | "Wild Bill" Kelly       | Montana           | 1924-25-26    |
| Kicker     | Jerry DePoyster         | Wyoming           | 1965-66-67    |

## SECOND TEAM (Miners)

|           |             |               |            |
|-----------|-------------|---------------|------------|
| Def. Back | Don Maynard | Texas-El Paso | 1955-56-57 |
|-----------|-------------|---------------|------------|

## Honorable Mention (Miners)

Chuck Hughes, Bob Wallace, George Daney, Ken Heineman, Billy Stevens, Charlie West, Fred Wendt, Jess Whittenton.

## DUNN Electric Co.

- Industrial
  - Commercial
  - Residential
  - Heating
- ENGINEERING  
Serving El Paso  
Since  
1927

4606 Titanic

751-1279

Vincent C. Kemendo, Builder

6507 North Mesa  
584-2941

P. O. Box 12416  
El Paso, Texas 79912

BETTER  
THAN A SEAT  
ON THE  
50 YARD  
LINE

SEE THE AUTUMN ACTION  
ON A QUALITY HANDCRAFTED



PORTABLE TELEVISION

Settle back and enjoy the clearest view of fall football anywhere... from your easy chair! And while you cheer the team on to victory, you'll give a big "hurrah!" for the outstanding performance of your new Zenith... undisputed leader of quality T. V.

BUY YOUR ZENITH TV ON A  
CONVENIENT CREDIT PLAN!

THE  
popular

DOWNTOWN • BASSETT • NORTHGATE



LYNNE POLING  
Featured Twirler

BEFORE and AFTER the Game



TERRY AND PATRICIA McCASKILL  
4008 NORTH MESA

532-9026

Healthy

# 5 1/4 %

Dividends paid twice a year  
on the safest, soundest  
investment you can make...  
El Paso Federal \$10,000  
savings certificates.  
Secure your future at...



## SAVINGS

& LOAN ASSOCIATION

El Paso's Most Convenient Place to Save  
Downtown • Sunrise • Coronado

GO  
WESTERN!

BE  
A

WINNER



NORTHGATE & BASSETT CENTERS  
DOWNTOWN AT 109 E. OVERLAND  
EL PASO'S LEADING SHOE REPAIR



Texas-El Paso yell leaders include, kneeling, Marty Goodwin; standing, from left, Debby Jackson, Charlie Staub, Larry Lavoie and Perry Kay Schulte; on shoulders, from left, Verna Plowman and Karen Minson. Top, head yell leader Janet Sarracino.

## H & R Wholesale Foods Co.

2000 Mills

533-2678

### McCRORY'S PHARMACIES

University Tower Building  
— 532-5947 —  
El Paso, Texas

### HACIENDA PHARMACY

— 589-0913 —  
7563 Acapulco Road  
El Paso, Texas

CITY WIDE - FREE DELIVERY

## KERN PLACE Florist

Let us take care of your floral needs.  
We're located between Mesa and Oregon.  
at 111 East Robinson  
near the UTEP campus  
Phone 533-7593

Corsages

Bouquets

Potted Plants

## SAM HIGGINS TEXACO

2500 No. Mesa

Wheel Alignment  
Balancing  
Brake Service

Phone 532-5242

## WHEN YOU SING

### STAR SPANGLED BANNER

Oh, say, can you see,  
by the dawn's early light,  
What so proudly we hail'd at  
the twilight's last gleaming?  
Whose broad stripes and bright  
stars, through the perilous fight,  
O'er the ramparts we watch'd  
were so gallantly streaming?  
And the rocket's red glare,  
the bombs bursting in air,  
Gave proof thro' the night  
that our flag was still there.  
Oh! say, does that star-spangled  
banner yet wave,  
O'er the land of the free  
and the home of the brave.

### THE EYES OF TEXAS

The eyes of Texas are upon you  
All the livelong day . . .  
The eyes of Texas are upon you,  
You cannot get away.  
Do not think you can escape them  
At night or early in the morn.  
The eyes of Texas are upon you  
Till Gabriel blows his horn.

### MINER'S FIGHT SONG

Miners, fight . . . Miners, fight!  
And it's goodbye to (opponent)  
Miners, fight . . . Miners, fight!  
And we'll put over one more win!  
Miners, fight . . . Miners, fight!  
For it's Miners that we love best.  
Hail, hail the gang's all here  
And it's goodbye to all the rest.



# TOUCHDOWN !!



- Miracle Prices
- Complete Conveniences
- Large Selection
- Gold Bond Stamps

**RAMSEY STEEL CO., INC.**

4137 Rosa  
EL PASO, TEXAS

**SOUTHWEST ACOUSTICAL CO.**

1000 Wall  
EL PASO, TEXAS

**PETERSON ELECTRIC INC.**

2602 North Piedras  
EL PASO, TEXAS

**SOUTHWEST MILLWORK MFG. CO.**

609 Willow  
EL PASO, TEXAS

**ARTCRAFT TILE CO.**

1148 Airway  
EL PASO, TEXAS

**BORSBERRY ROAD & PAVING CO.**

5165 Hercules  
EL PASO, TEXAS

**WESTERN GLASS & MIRROR CO.**

1831 Texas  
EL PASO, TEXAS

**FRONTIER ROOFING CO.**

5256 Tetons  
EL PASO, TEXAS

**LACY PAINTING CO., INC.**

3912 Mountain  
EL PASO, TEXAS

**R. J. OSBORNE CO.**

2116 East Yandell  
EL PASO, TEXAS

**A. W. SPILLMAN LATH & PLASTERING**

7145 Dale  
EL PASO, TEXAS

**ARCHITECTURAL PRODUCTS CO., INC.**

123 North Concepcion  
EL PASO, TEXAS



## The Changing Face

Many who attend football games in the Sun Bowl perhaps are not aware of the many changes taking place elsewhere on the campus at The University of Texas at El Paso.

The changing sounds of scoop shovels and the whistling of jack hammers fills the air... U.T. El Paso is building. If student enrollment continues at the same rate, the campus could have over 22,000 students by 1975.

A major step in changing U.T. El Paso from a commuter college is the construction, by R. D. Lowman General Contractor, Inc., of El Paso, of the \$4.5 million dormitory complex scheduled for completion in September, 1970. The building site is on the southwest corner of the campus, between Wiggins and Sun Bowl Drive.

The men's dormitory will be a nine-story knife-shaped edifice housing 422

men. The second building will accommodate 325 women in a seven-story L-shaped structure. The third building will be a two-story dining room with a seating capacity of 2,000 per meal. The dining commons is being built to provide meals for residents of two more dorms planned for the future.

This past spring the centrally-located underground heating and cooling system for the U.T. El Paso campus was completed and put into operation. The plant that will govern the system is located between the Physical Science Building and Bell and Benedict Halls on the southwest side of the central campus.

Late spring also found the students and faculty exploring the addition to the Union. Built at a cost of \$2.8 million, the new addition will house all Union facilities and activities. The old structure is being renovated and will

be used for student and faculty facilities.

Construction is underway on the \$3.7 million Education-Engineering complex. The center will consist of two wings of four stories, flanking an eight story tower. The structure will house classrooms, laboratories and faculty offices. When completed, the center will be the largest teaching facility on campus.

Old structures never die... they are remodeled. Approximately \$1 million is being spent on the remodeling of the Biology Building, the Geology Building, Old Main, Kelly Hall and the old Education Building. The improved facilities will contain classrooms, laboratories, and much-needed faculty office space.

The U.T. El Paso campus of the future is being built today. All can share in the pride and prestige our University is building locally and nationally.

**R. D. LOWMAN**

GENERAL CONTRACTOR, INC.  
EL PASO, TEXAS

IS

GENERAL CONTRACTOR

FOR

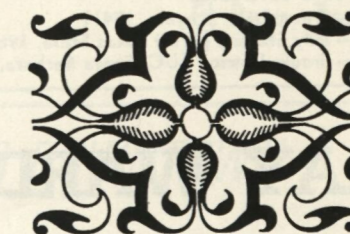
THE NEW DORMITORY

AND DINING COMPLEX

FOR THE

UNIVERSITY OF TEXAS

AT EL PASO





## Minerland Basketball

The success of Texas-El Paso on the basketball scene this season could, perhaps, depend on how well Dick Gibbs, a 6-7, 215-pound import, fits into the picture.

Hopefully Gibbs will give the Miners something they have lacked for two seasons — some tough board power. Although he isn't a post man, Gibbs averaged 12 caroms and 19.2 points at Burlington (Iowa) JC last season.

Coach Don Haskins, preparing for his ninth season at Minerland, returns three starters from the 1968-69 outfit which came home with a 16-9 record. The returning starters include Nate (The Roller Skate) Archibald, 6-0 senior guard; Mike Switzer, 6-5 senior forward and Ples Vann, 6-3 senior forward-center.

The Miners, making their first run at the Western Athletic Conference title, got off to a quick start in 1968-69, ran up a 12-3 slate and then staggered home with a 16-9 record.

Lack of a big man was one of the chief reasons the Miners stumbled towards the end of the season. Although he isn't a skyscraper in the present sense of the basketball word, Gibbs should fit into Haskins' game plans.

Haskins has fashioned a remarkable 160-50 record in eight years with the Miners but is somewhat disappointed with his record the past two seasons. He has indicated that his team will either play better defense in 1969-70

or the Miners will revert back to a more conservative brand of offense.

If the three returning starters — Archibald, Switzer and Vann — can get some help from Gibbs and such returning lettermen as Bob Doyle, Len Stewart, Walter Richards, etc., it could be an interesting season.

Help may also come from frosh-grad Scott English, a 6-5, 190-pounder, who had a good freshman campaign.

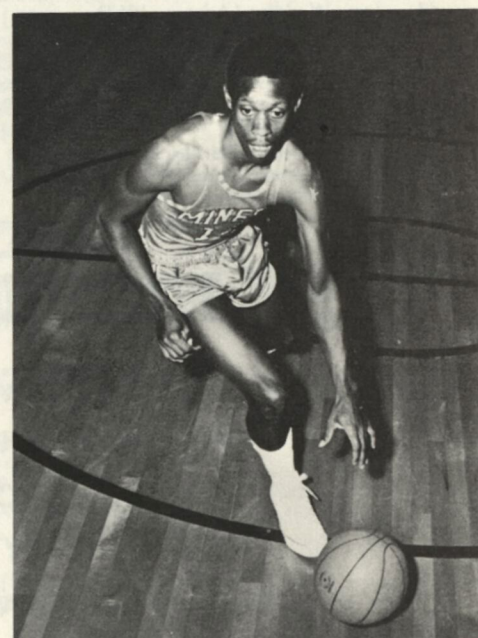
Archibald led the Miners in scoring last season, with a 22.4 effort, while Switzer contributed 17.6 points per outing.

### 1969-70 SCHEDULE

| Date    | Opponent                                 | Site               |
|---------|------------------------------------------|--------------------|
| Dec. 3  | Okla. City Christian College             | El Paso, Tex.      |
| Dec. 6  | Quincy College                           | El Paso, Tex.      |
| Dec. 19 | Kansas Jayhawker Tourn., Lawrence, Kan.  |                    |
| Dec. 20 | Kansas Jayhawker Tourn., Lawrence, Kan.  |                    |
| Dec. 22 | Sun Cannival Tournament, El Paso, Tex.   |                    |
| Dec. 23 | Sun Carnival Tournament, El Paso, Tex.   |                    |
| Dec. 27 | Southern Methodist Univ., El Paso, Tex.  |                    |
| Jan. 2  | Athletes in Action                       | El Paso, Tex.      |
| Jan. 3  | Southwestern Louisiana                   | El Paso, Tex.      |
| Jan. 5  | New Mexico State Univ.                   | El Paso, Tex.      |
| Jan. 8  | Colorado State Univ.                     | Ft. Collins, Colo. |
| Jan. 10 | University of Wyoming                    | Laramie, Wyo.      |
| Jan. 15 | University of Arizona                    | El Paso, Tex.      |
| Jan. 17 | Arizona State University                 | El Paso, Tex.      |
| Jan. 24 | New Mex. State Univ., Las Cruces, N.M.   |                    |
| Jan. 29 | University of Utah, Salt Lake City, Utah |                    |
| Jan. 31 | Brigham Young University                 | Provo, Utah        |
| Feb. 5  | University of New Mexico                 | El Paso, Tex.      |
| Feb. 12 | University of Wyoming                    | El Paso, Tex.      |
| Feb. 14 | Colorado State University                | El Paso, Tex.      |
| Feb. 19 | Arizona State University                 | Tempe, Ariz.       |
| Feb. 21 | University of Arizona                    | Tucson, Ariz.      |
| Feb. 26 | Brigham Young University                 | El Paso, Tex.      |
| Feb. 28 | University of Utah                       | El Paso, Tex.      |
| Mar. 4  | Univ. of New Mexico, Albuquerque, N.M.   |                    |



DON HASKINS



NATE ARCHIBALD

# The mini-color portable with the maxi-color screen from RCA.



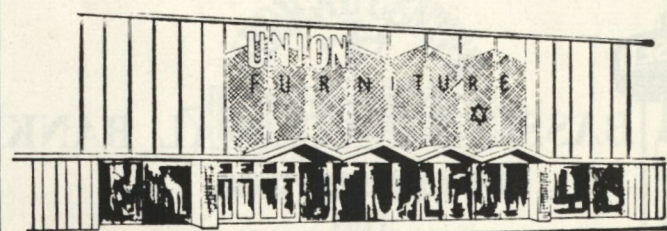
RCA engineers have pared pounds to make this a truly portable color TV—with no sacrifice in the quality of its sharp, clear 18" diag., 180-sq. in. color picture. Weighs less than some other sets with smaller screens. Carry the FAIRWAY home for \$369.95.

AB COMPANY  
ANTHONY FURNITURE  
FED MART  
GLOBE SHOPPING CENTER  
K MART  
LEO'S APPLIANCE

NOON PON'S TV  
S.O.S. TV & APPLIANCE  
TV RAY  
TRI STATE MUSIC  
WIGGS APPLIANCE



7744 NORTH LOOP ROAD  
THE BANK ON THE GO  
PHONE 778-9201  
WITH TIME TO SERVE YOU



205-215 S. STANTON ST.  
DIAL 533-2486  
EL PASO, TEXAS

**UNION**  
Furniture Co.



## Stadium Information

The Department of Intercollegiate Athletics is anxious to render maximum service to our patrons. We hope that you will feel free to seek our assistance in any problems which you might have on game nights. Some of your questions may be answered below.

The Athletic Business Office, El Paso Police Department, campus police, ushers, vendors and other attendants are available to assist you.

**EMERGENCY CALLS**—In case of emergency a call to the press box, 542-5154, will enable the Public Address Announcer to page you.

**PUBLIC TELEPHONES**—Located on the west side are four phones located at the entrances of each rest rooms. On the east side there are two phones in the middle of the concourse and two others are located on each side of the press box.

**REST ROOMS**—Rest Rooms are located in the concourse which circles the heart of the stands. On the West side the rest rooms are located on each end. On the East side the rest rooms are in the middle of the concourse downstairs. Rest rooms are also located at the top of the stadium on each end of the press box. Your assistance in helping us keep these rooms clean will be appreciated.

**LOST AND FOUND ARTICLES**—Should you lose an article while attending a game, call the Sports Information Office 542-5254. Spectators finding articles are requested to deliver them to the nearest usher or to the press box.

**AMBULANCE SERVICE**—Courtesy of the El Paso Ambulance Service. Available for any emergency which might occur in the stadium during a game.

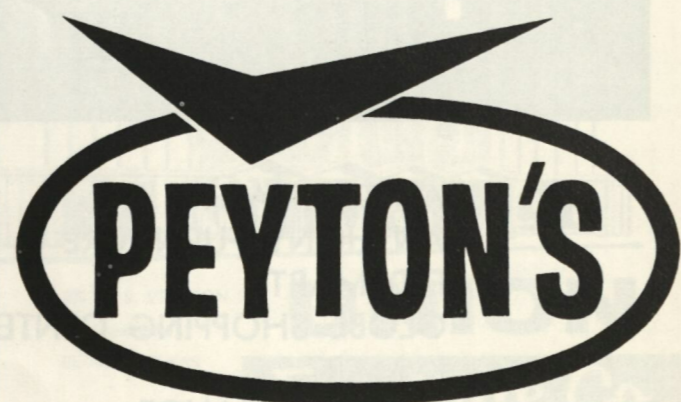
**QUALITY REFRESHMENTS**—Your attention is directed to the refreshments service which is provided for your convenience and enjoyment. The concessions are operated under the supervision of the Department of Intercollegiate Athletics. Concession rooms are located in the concourse on each side of the stadium and each end of the press box.

**WILL CALL SERVICE**—Individual game tickets may be reserved by telephone by calling the Athletic Business Office 542-5264. The office will provide you with information on tickets available. The **WILL CALL BOOTHS** are located at each end of the stadium. Tickets which have been purchased will be held at the will call window of his preference.

# CHEER LEADERS



Everybody cheers when you serve Peyton's Del Norte Franks. They're all-meat Franks, deliciously hickory-smoked to satisfy hearty appetites . . . quick 'n' easy to fix. When your goal's good eating . . . pass Peyton's Del Norte Franks . . . Hot Dog!



## New Chevy Blazer! Only car/truck combination of its kind.

Call it a car, call it a truck . . . just call it great! Blazer is the first short wheelbase 4-wheel drive runabout with full power, full track, full width.

It takes you into the roadless places with more power and a wider tread than others of the breed. Yet Blazer is always on its good behavior

for comfort and ride.

Order open top or removable hardtop, Six or V8, 3- or 4-speed manual or Turbo Hydra-matic transmission.

There's nothing like Blazer for trail or town, jaunts or jobs. Visit your Chevrolet dealer soon. . . Chevrolet Division of General Motors, Detroit, Mich.



SPORTS-RECREATION  
DEPARTMENT

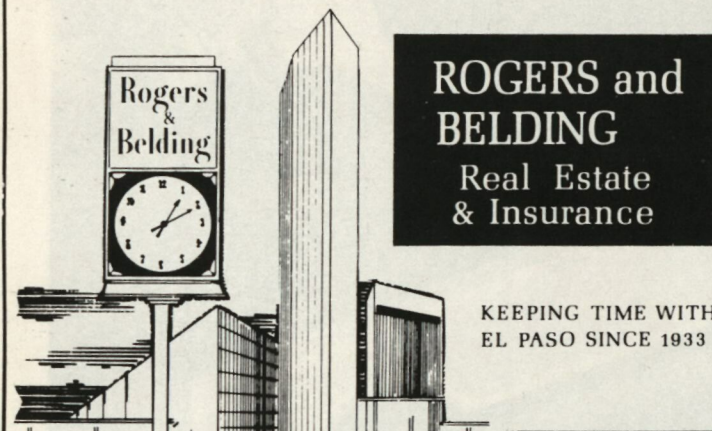
## Western Battery & Magneto Co., Inc.

Wholesale Automotive  
Distributors

PHONE 542-1601

1600 Texas Ave.

EL PASO, TEXAS



**ROGERS and  
BELDING**  
Real Estate  
& Insurance

KEEPING TIME WITH  
EL PASO SINCE 1933

533-7407

**ArLins**

FLOOR & WALL COVERINGS • 1911 TEXAS AVE. • EL PASO, TEXAS 79901

ARLIN M. MADDOX

## GO MINERS GO WITH WHITFIELD

CHARTER SPECIALISTS IN ALL TYPES  
OF GROUP TRAVEL TO ANYWHERE  
IN THE U.S.

UTEP'S FAVORITE BUS LINE

**Whitfield Bus Lines, Inc.**

**533-4976**

## MESA PANCAKE COTTAGE & RESTAURANT

Mesa at Robinson  
Open 6 a.m. till Midnite  
Luncheon and Dinner Buffet, Daily except Saturday  
— Free Parking



## MEET THE TIGERS

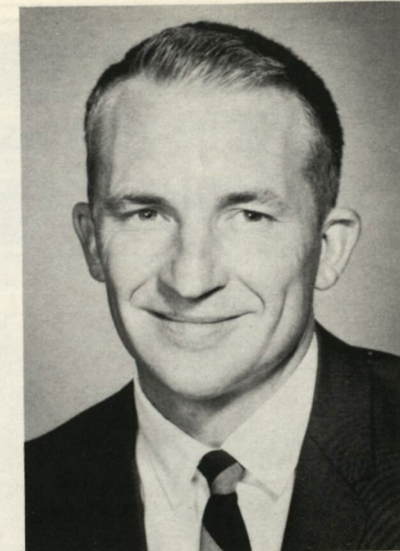
UNIVERSITY OF PACIFIC



**DR. ROBERT E. BURNS**  
President



**DOUG SCOVIL**  
Head Coach



**DR. CEDRIC DEMPSEY**  
Director of Athletics



Coaching staff includes, standing from left, Mike Siegfried, John Monello, Gary Scott, Doug Smith, A. D. Williams, Chester Caddas, Jack Layland. Kneeling, from left, head coach Doug Scovil, Ken Blue.

## A GREAT LINEUP!

HORNET, REBEL, JAVELIN, AMBASSADOR AND THE AMX



*Either we're charging too little or everyone  
else is charging too much!*

**MACK MASSEY RAMBLER**

6318 MONTANA • 778-9381

# SPORTS

The El Paso Times

- COMPLETE
- COMPREHENSIVE
- 7 DAYS A WEEK

It's the El Paso Times for current sports news and pictures - while it is still news.

HOME DELIVERY - 55¢ WEEKLY  
INCLUDING THE BIG SUNDAY TIMES

## El Paso Herald-Post SPORTS

Edited by Bob Ingram

The Herald-Post keeps you well informed with up-to-the-minute sports coverage — as well as local, national and international news!  
DELIVERED TO YOUR HOME  
ONLY 35¢ PER WEEK



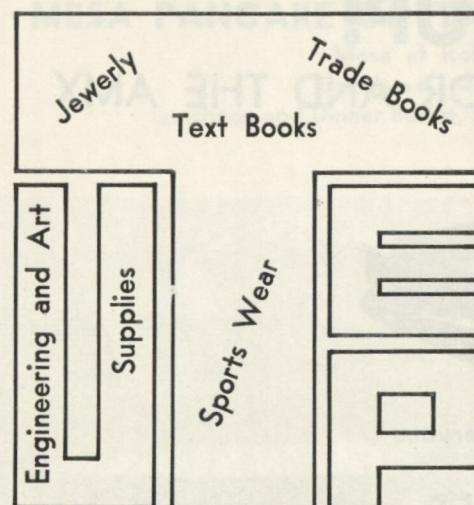
## WHERE THE MINERS WENT TO CAMP!

### CAMP WESTERN LIFE LAS VEGAS, N.M.

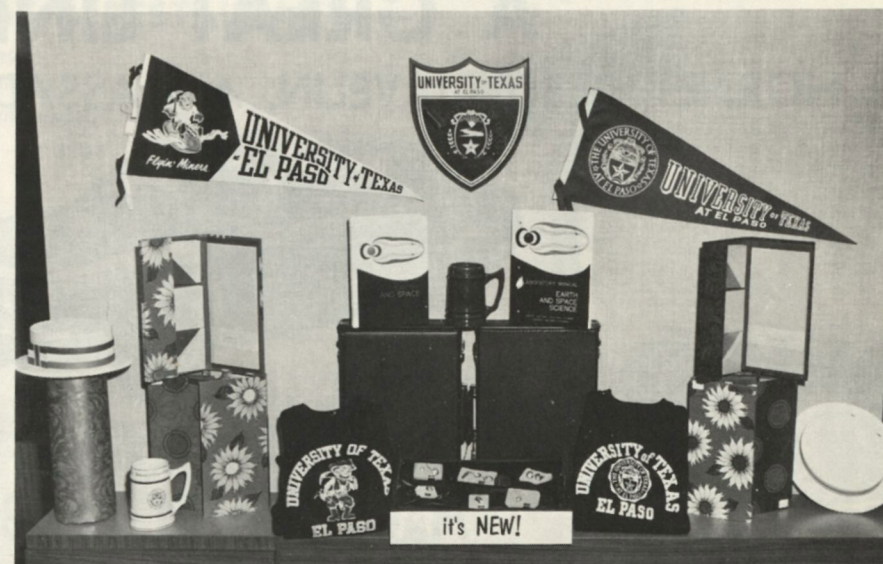
## WAC'em, MINERS

## the UNIVERSITY BOOKSTORE IN THE UNION

We invite you to  
visit and browse . . .



542-5594 or 5595



## CAMPUS SCENES AT UNIVERSITY OF PACIFIC



PHARMACY SCHOOL



ROBERT E. BURNS TOWER



MORRIS CHAPEL

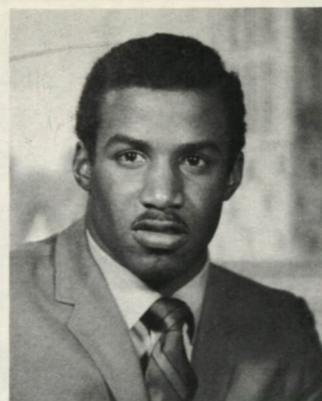


# Big 8

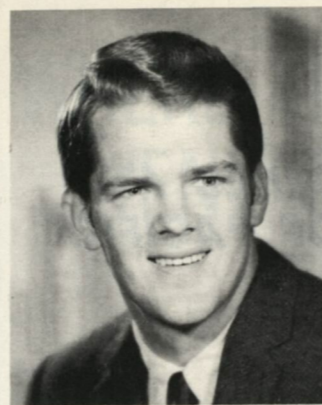
## Stores & Supermarkets

"The Chain with the Personal Touch"

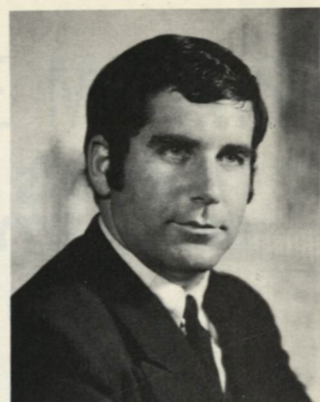
O  
F  
F  
E  
N  
S  
E



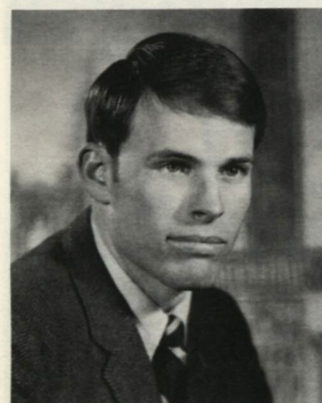
CAL ROGERS



JOHN READ



CHUCK CAMY



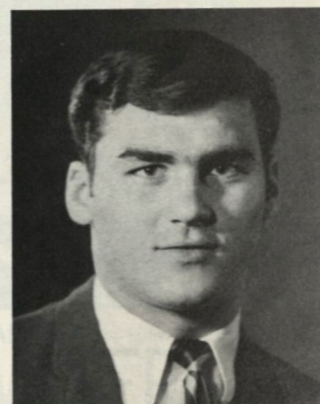
GEOF WILLIS



BILL BERNIER



BILL TOLEDO



TOM SURBRIDGE



Pleasing . .



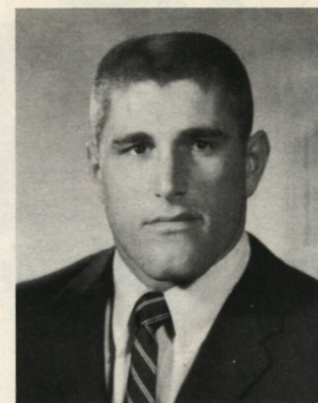
in EVERY WAY!

Kern Plaza Shopping Center  
3100 NORTH MESA

Sunrise Shopping Center  
8500 DYER STREET



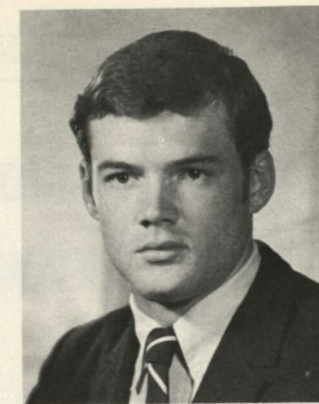
SCOTT OCHEL



PAUL PRESS

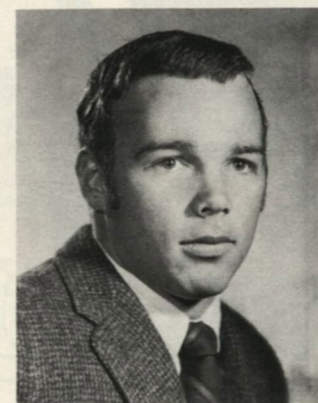


MARK KNOX

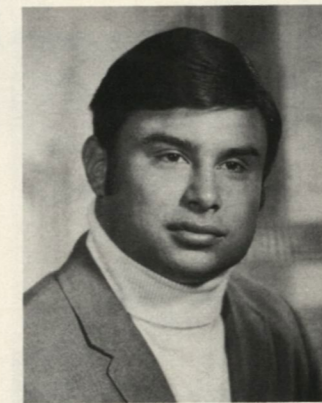


ROBBIE DeWITT

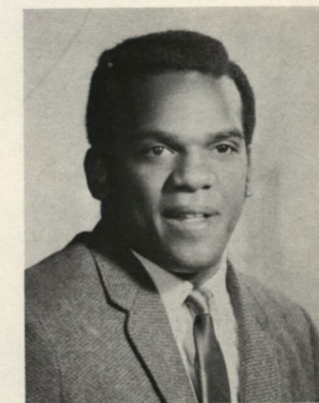
D  
E  
F  
E  
N  
S  
E



DAN DREW



VIC ORNELAS



WILSON MYER

guynes  
printing  
company



614 NORTH STANTON STREET  
EL PASO, TEXAS 79901 • 532-6226

Prime purveyors of everything from  
posh palaces and palate-pleasing potables  
to ponderous pachyderms prefer the  
perfectly printed presentations of  
the paramount printing partners in these parts . . .

THE GUYNES GUYS

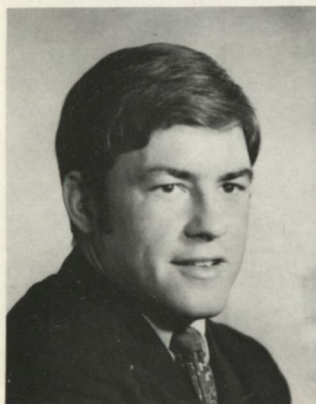
who guarantee your printed pieces will never  
twist a tongue or your sparkling public image.



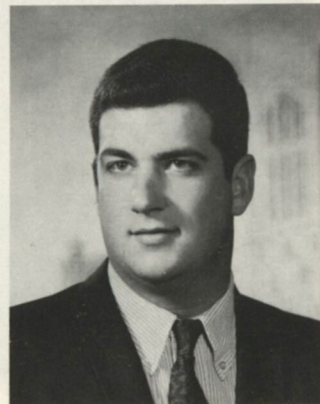
CHUCK GOVER



BO HAYSELDON



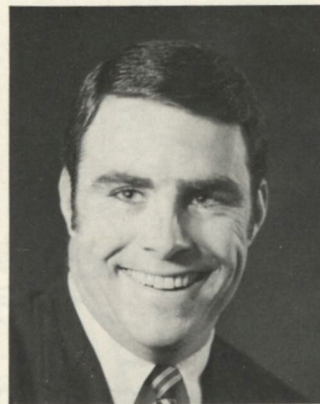
DON DeAMARAL



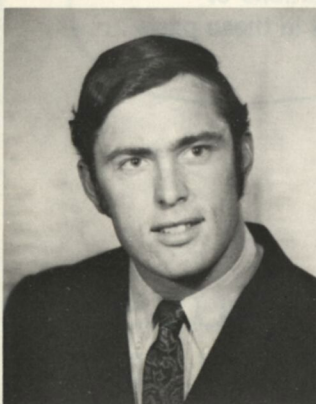
STEVE SIMONDI



BOB CRAWFORD



WAYNE QUIGLEY



GREG RUNNALS



CRAIG REECE



## Cheer the winners

Price's Meadow Gold dairy products always deliver a high quality of richness and freshness . . . winners everytime!

MEADOW GOLD HOMO MILK  
GURN-Z-GOLD LOW FAT MILK  
MEADOW GOLD ICE CREAM  
MEADOW GOLD SHERBETS  
MEADOW GOLD GOURMET ICE CREAM  
MEADOW GOLD COTTAGE CHEESE  
NORDICA YOGURT

This ad worth 25 cents toward purchase of 1/2 gallon of ice cream — cheers.

PRICE'S CREAMERIES, INC.



## HAPPINESS is a his and hers . . . BankAmericard!



**Let us make you happy with the only credit card you'll ever need**

AMERICAN BANK of COMMERCE  
CORONADO STATE BANK  
SOUTHWEST NATIONAL BANK  
STATE NATIONAL BANK

members of F.D.I.C.



Introducing automobiles to light your fire.

BUICK MOTOR DIVISION



The Gran Sports. From Buick 1970.

They're the cars you've been asking us to make.

This one's the GS455 equipped with the Stage I performance package.

If it's performance you want, the GS455 Stage I has it.

A 455 cubic-inch engine. With a high-lift cam and four barrel carburetor which breathes through real air-scoops to add performance.

A cooling system that should never overheat.

And four on the floor is available. Or an improved 3-speed automatic transmission.

Maybe it's the name Buick, with all the goodness and confidence that goes with that name, that really gets you.

Whatever it is, the GS455 Stage I has it. And so do all the Light Your Fire Cars from Buick 1970. See them.

**NANCE BUICK CO.**

Now, wouldn't you really rather have a

**1970 Buick.**

**6800 Montana • El Paso**

**778-7781 • Buick/Opel**