



May 8th, 2:15 PM - 5:00 PM

A Shifting Paradigm in Dental Education: Embracing Prevention Over Intervention for Dental Caries Management

Neekita Saudagar
University of the Pacific

Karan Bajwa
University of the Pacific

Mandeep Kaur
University of the Pacific

Follow this and additional works at: <https://scholarlycommons.pacific.edu/excellence-day>



Part of the [Dentistry Commons](#)

Saudagar, Neekita; Bajwa, Karan; and Kaur, Mandeep, "A Shifting Paradigm in Dental Education: Embracing Prevention Over Intervention for Dental Caries Management" (2024). *Excellence Day*. 57.
<https://scholarlycommons.pacific.edu/excellence-day/2024/events/57>

This Presentation is brought to you for free and open access by the Arthur A. Dugoni School of Dentistry at Scholarly Commons. It has been accepted for inclusion in Excellence Day by an authorized administrator of Scholarly Commons. For more information, please contact mgibney@pacific.edu.



Neekita Saudagar, DDS; Karan Bajwa, DDS; Mandip Kaur DDS;

Department of Preventative and Restorative Dentistry, University of the Pacific, Arthur A. Dugoni School of Dentistry, San Francisco

Objective and Questions

Background: Caries management is a key issue for oral health care providers. Identifying evidence-based protocols for caries assessment and managing them accordingly is paramount.

Q1: What are the key findings of CAMBRA'S Reliability, usability, and reproducibility across age groups. Application in dental schools?

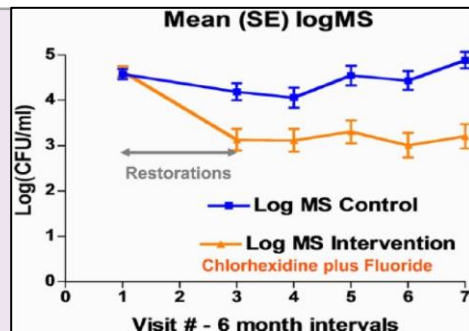
Q2: How effective is adult tooth Pulpotomy?

Q3: What are the latest Non/Minimally invasive Dental Interventions?

Research Method

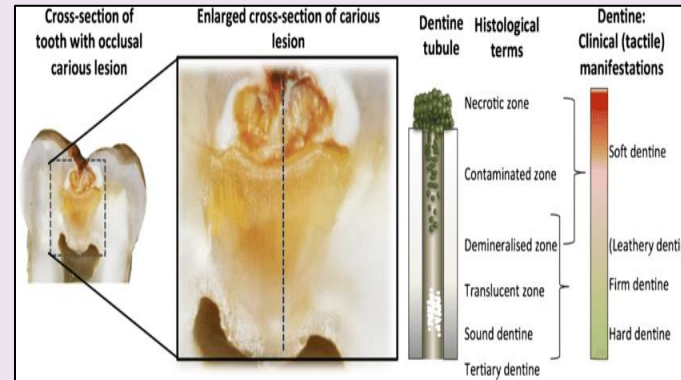
- Scoping review of English - Articles from 1990 onwards in dental databases.
- Key terms included:** CAMBRA, caries risk assessment, Selective, nonselective caries removal, Adult tooth pulpotomy and minimally invasive dentistry.
- Out of 203 articles, **30 relevant articles** were selected.

(Featherstone & Chaffee, 2018)



Mean (SE) log of mutans streptococci counts in saliva (colony-forming units per milliliter) at baseline and at follow-up visits every 6 months in a randomized controlled clinical trial that examined caries management by risk assessment using chemical intervention therapy (Featherstone et al. 2012)

Cavitated lesion (Ogawa et al; 1983)



Findings

CAMBRA

- Offers Clinician- Evaluation tool effectiveness of preventive and management strategies.
- Imperative Guide for patient education

ADA Guidelines

- Stepwise excavation:** Decreases risk of pulp
- Management of deep caries lesions
- Vital pulp treatment due to better prognosis

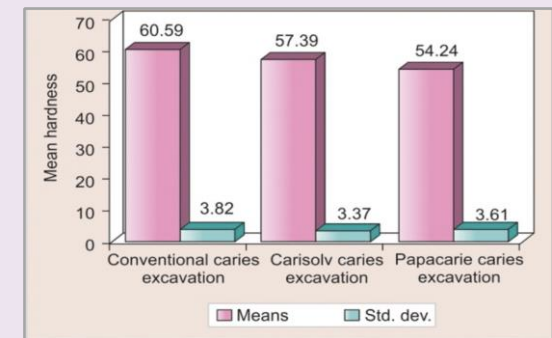
Minimally Invasive Dentistry

- Provides therapeutic effects with CAMBRA
- Significantly reduces long-term restorative needs and costs

Discussion and Conclusion

1. Minimal intervention dentistry is a shift from 'compulsive' restorative procedures to informed therapeutic strategies.
2. Caries risk assessment in different age groups.
3. Pediatric dental care – prevention and management protocols using caries risk assessment for infants and young children
4. Detection and diagnosis of initial caries lesions
5. Atraumatic restorative treatment (ART) – a minimum intervention
6. Caries inhibition by resin infiltration
7. MI- rationale and techniques.

Efficiency and Effectiveness of Minimally Invasive Methods



Acknowledgements

The authors would like to acknowledge the many people involved in this poster. We'd like to thank Dr.Pansoy, for the excellent support. Thank you to the whole PRD faculty. Dr.Priya.P, Dr.Ganesh, Dr.Milani, Dr.Aniket.D,Dr.Noor, Dr.Pineda. **Please scan QR on top left for the references**

OKU Sutro Excellence Day Project Cover Sheet

Project Title

Full name(s) and class year(s) of all project collaborators

Example: Jane Smith, DDS 2022; John Smith, DDS 2022

Project Category

Enter your abstract text here (max 300 words)