



9-29-1957

September 29, 1957 Football Program, UOP vs. San Diego

University of San Diego

Follow this and additional works at: <https://scholarlycommons.pacific.edu/ua-football>

Recommended Citation

University of San Diego, "September 29, 1957 Football Program, UOP vs. San Diego" (1957). *Football*. 249.
<https://scholarlycommons.pacific.edu/ua-football/249>

This Book is brought to you for free and open access by the Athletics at Scholarly Commons. It has been accepted for inclusion in Football by an authorized administrator of Scholarly Commons. For more information, please contact mgibney@pacific.edu.



1957 SCHEDULE

- *Sept. 21 College of the Pacific
- *Sept. 28 San Francisco State
- *Oct. 5 Cal Poly (SLO)
- *Oct. 12 San Diego Marines
- Oct. 19 San Jose State
- *Oct. 26 Arizona State, Tempe
- Nov. 2 Fresno State
- *Nov. 9 Hawaii Marines
(Homecoming)
- Nov. 15 Pepperdine College
- *Home Games



6 SAN DIEGO VS 32 COLLEGE OF THE PACIFIC

IT'S 7-UP TIME



Aztecs Host Tigers in Opener

Once again it's just about kick-off time for another football season. This year it's starting a week earlier than usual, further confounding the sports fan who finds it hard to accustom himself to the various sports encroaching on another sport's season. To many it's still baseball time; after all, the pennant winner in each major league is yet to be decided. But—in our salubrious Southland, it's all sports weather the year around.

To the die-hard sports fanatic, we say, "Friend, it's later than you think; for in a matter of minutes the 1957 Aztecs will be engaging the College of the Pacific Tigers."

Once again the Bengals must be rated the top West Coast independent football team and, undoubt-

edly, one of the top five independents in the country. The unfortunate loss of Pacific's outstanding halfback, Dick Bass, last week will not dull the Tigers' fangs, because Jack Larscheid, Roger Metoyer and Hank Wallace are ready to go.

This will be the seventh meeting between the two teams, with Pacific holding the edge, 5-1. The last Aztec win was in 1941 when the Staters eked out a 12-6 victory.

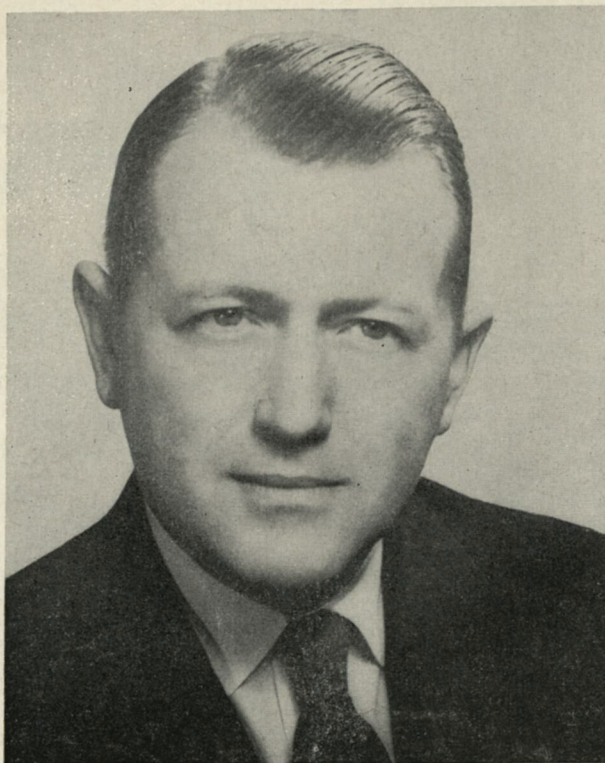
The 1957 Aztecs are smaller and lighter than usual and lack experience. There are only 12 lettermen back from last year, of which only five may be classed as regulars. At any rate, the kids are prepared to give the spectators their best, and it is our hope that you'll enjoy the game.

Published by the Associated Students
San Diego State College
SPENCE GARTZ, Editor

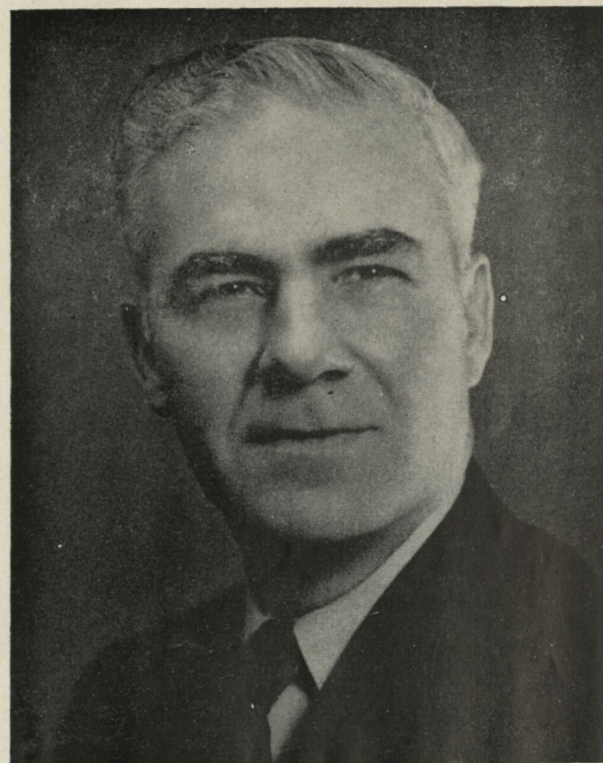
Represented for National Advertising by
SPENCER ADVERTISING COMPANY
271 Madison Ave., New York 16

VOLUME XX

NUMBER ONE



Dr. Robert E. Burns
President, College of the Pacific



Dr. Malcolm A. Love
President, San Diego State College

From the Beginning

The College of the Pacific was founded during the rush of history making events that established the American destiny of California. In 1848 James Marshall discovered gold; in 1849 the gold rush poured into California; in 1850 California became the 31st state of the Union; and in 1851 California chartered its first college—College of the Pacific—in Santa Clara.

In 1871 the college was moved to San Jose where, prophetically perhaps, it occupied land known as the "Stockton Rancho." It remained there until 1924 when a great relocation program, directed by its then president, Dr. Tully C. Knoles, moved it to Stockton. There it has developed far beyond its greatest 19th century years, the campus occupying 71 acres of sweeping lawns and spreading shade trees.

Pacific offers major courses in 24 subjects and is especially known for its physical education, radio, business administration, music and drama departments.

As Pacific grew, so did its football team now rated as the top independent team in the West. Its all-time record: 180 wins, 137 losses, and 17 ties for a .567 percentage.

This year marks the 61st birthday of San Diego State College. Founded in 1897, the college fielded its first football team in 1921. Since that latter date, the Aztecs have amassed 156 victories against 123 losses and 19 ties, for a .631 percentage.

San Diego State moved to its present location twenty-seven years ago. Before that time, the institution was located downtown and known as the "normal school."

The college opened its doors on the present site in 1931 to 1,200 students. It now has almost 9,200 students and is larger than 94 per cent of the country's colleges and universities. The college's enrollment is expected to be doubled by 1963.

There are 33 academic departments offering 35 majors for the Bachelor of Arts degree and 20 majors for the Bachelor of Science degree. Master of Arts degrees are offered in seven fields.

Since World War II, the college has added about \$4,000,000 worth of buildings to its 303-acre campus. It has under construction or funds available for an additional \$5,000,000 worth of buildings.

The recently completed Humanities-Science building has classroom facilities to accommodate approximately 3,000 students.

LONGINES
is official timing
watch for
sports associations
the world over
including:



U.S. OLYMPIC COMMITTEE



NATIONAL COLLEGIATE
ATHLETIC ASSOCIATION



NATIONAL AERONAUTIC
ASSOCIATION



AMERICAN POWERBOAT
ASSOCIATION



NATIONAL HORSE SHOW
ASSOCIATION



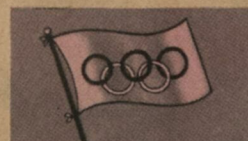
NATIONAL SKI ASSN.



NATIONAL FOOTBALL
LEAGUE



MAJOR LEAGUE BASEBALL



OLYMPIC WINTER GAMES
1960

OFFICIAL WATCH FOR TIMING THIS GAME

Longines

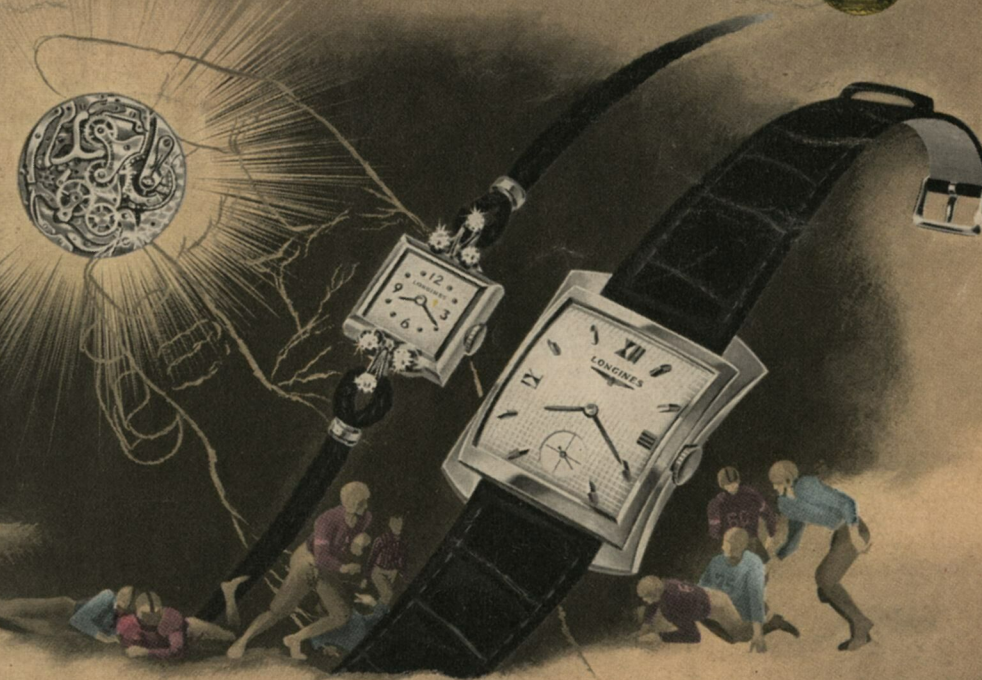
THE WORLD'S *Most Honored* WATCH

10 WORLD'S FAIR GRAND PRIZES • 28 GOLD MEDALS

HIGHEST OBSERVATORY HONORS FOR ACCURACY

OFFICIAL WATCH FOR CHAMPIONSHIP SPORTS

THE FIRST WATCH OF AVIATION AND EXPLORATION



LONGINES HONORS YOUR TIME

The pre-eminence of Longines in sports timing results from those inbuilt qualities of accuracy and dependability which have made Longines *the world's most honored watch*. These are the identical qualities which have won for Longines the highest honors to which a watchmaker can aspire

—including ten world's fair grand prizes, 28 gold medals, highest observatory awards for accuracy. A Longines watch will honor *your time*. And, among Longines' 300 fine watch models there is the perfect style and type *for you*. Your Longines-Wittnauer Jeweler will be *honored* to serve you.

Illustrated—Longines Starlight Serenade L-J 6, elegant 14K gold watch with 6 diamonds, \$175;

Longines Presidency "E", 14K gold case, \$125. Other models from \$71.50. Federal tax included.

Longines-Wittnauer Watch Company

SINCE 1866 MAKER OF WATCHES OF THE HIGHEST CHARACTER

New BLADE-ELECTRIC

Shaves Close as a Safety Razor with Electric Speed and Convenience



an exclusive advantage with the

Sunbeam

HOLLOW GROUND*
BLADE-ELECTRIC
SHAVEMASTER
RAZOR

Actually shaves *below the beard line* because the big, smooth head flattens skin mounds and pops whiskers high. There's nothing between the blade and the base of each whisker, and you shave with a gentle, circular motion that gives your face a healthy, youthful glow. Remember, SHAVEMASTER is the only electric shaver with a real hollow ground* double edge blade powered by a 16-bar armature-type motor.

ASK YOUR DEALER ABOUT A
FREE 14-DAY HOME TRIAL!



*HOLLOW GROUND
DOUBLE EDGE BLADE
IS SELF-SHARPENING

Look for the MARK OF QUALITY

SEE YOUR **Sunbeam** DEALER

©S. C. ©SUNBEAM, SHAVEMASTER,



In six smart colors—



San Diego State College Administration

Dr. William L. Terry
Director of Athletics

Herbert C. Peiffer
Dean of Students

Dr. Fred C. Kasch
Chairman, Physical Education Dept.

Richard H. Thomas
Graduate Manager

Tiger Coaches



JACK "MOOSE" MYERS is entering his second year as Pacific's first combined Athletic Director and Head Football Coach and also his fifth season as head grid mentor.

The 32-year-old Myers was the youngest head coach in the nation at a major football school when he was appointed to the job in 1953 at the age of 28.

During his four years at Pacific, Myers has had to face the toughest schedules ever attempted by the Bengals. When he assumed the job, the Tigers were at a low ebb material-wise. Gradually the team has been strengthened and "Moose" believes the 1957 Tigers are his best yet.

Jack Myers has been an outstanding athlete all his life—first at Ventura High School, then U.C.L.A. and in professional football with the Philadelphia Eagles and Los Angeles Rams. His only previous coaching experience was a year as backfield coach at Pacific in 1951.

Myers' regime at Pacific features emphasis on youth. The entire staff averages 29 years of age.

Back with the Rams in 1952, "Moose" was one of the forces that drove Los Angeles into the Western Division playoffs.

LINE COACH JOHN NIKCEVICH was a playing mate of Myers at UCLA in 1946-47, and spent the 1950 season as a graduate assistant to Bruin coach Red Sanders. The next two years, 1951 and 1952, John was line coach at the University of Idaho. When Myers was selecting his staff, he picked Nikcevic for line coaching duties from his memory of him as a player and Sanders' recommendation of him as one of the most promising young coaches in the game.

END COACH JOHN ROHDE—Recognized as one of the great pass catching ends on the Pacific Coast in the post-war era, Rohde did his playing for Pacific from 1946 through 1949 and was the favorite target of Quarterback Eddie LeBaron's passes for four years. He had a brief fling at pro ball with the Washington Redskins. Following two years in the business world, Rohde joined Myers' staff in May, 1953.

FROSH COACH SID HALL and ASSISTANT COACHES NEVEN HULSEY and JIM REYNOSA were former outstanding Pacific players. Hall, a center and linebacker; Hulsey, a guard; and Reynosa, a top-notch quarterback. (Hulsey and Reynosa kneeling.)



RCAVICTOR ANNOUNCES NEW "FLIGHT-LINE" PORTABLE TV



Hathaway. 262 sq. in.* viewable area. Ebony-and-gold.
(21PD811) \$239.95.

Nassau. 108 sq. in.* viewable area. Ebony or bark gray.
(14PT802) \$135.00.

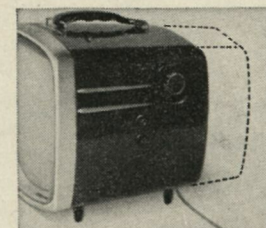
Socialite. 156 sq. in.* viewable area. Choice of five finishes.
(17PD809) \$199.95.

Compact new easy-to-carry design with
"Mirror-Sharp" picture in every wanted size—from \$135.00

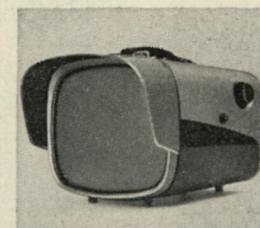
Here's portable TV with a slender, space-saving design that's breezy and easygoing as a southbound swallow. It goes anywhere, fits anywhere, plays on any 110 AC outlet. Your ideal second set.

There's powerful excitement in the new "Mirror-Sharp" picture, too. It's crisp and clear as the picture on a console. Yet "Flight-Line" prices (including all the important new extras) are really down-to-earth. See new "Flight-Line" portable TV in exactly the size and color you've been wanting. Come in today!

FOR UHF—UHF/VHF tuner optional, extra.



RCA's 110° tube makes tapered "Flight-Line" TV inches shorter. The already slim 14"† models have 90° tube.



New Sun Visor helps keep "Mirror-Sharp" picture, even in bright sunlight. Optional extra on 14"†, 17"† models.

†Picture tube, overall diagonal (inches) | 14 | 17 | 21
*Square inches of viewable picture area | 108 | 156 | 262

WILSON TELEVISION

8118 La Mesa Blvd.

Telephone HOpins 9-6136

Looking at Pacific

The last two times College of the Pacific's football team played in San Diego, Bordertown fans got a look at a quarterback named Eddie LeBaron, who was and is still considered "the greatest" by most old Tiger grads.

Now, some nine years later, the Bengals are back in Aztec Bowl quarterbacked by a 20-year-old lad named Tom Flores. Suffice to say that these same old Tiger grads will allow Flores to be mentioned in the same breath with LeBaron and you get some indication of the mark he's made in only one year with Pacific.

Tommy had one of the nation's outstanding passing records in 1956, topping all players in touchdown responsibility by passing for 11 and scoring seven himself for a total of 18. His 11 TD passes was scored nationally and his 1,119 yards gained throwing and .575 completion percentage were fourth. He also was fourth in individual total offense.

Flores has the offensive tools to work with in getting the job done. Much heralded Dick Bass was more than living up to his reputation when he broke his leg in a practice scrimmage last Saturday. Roger Metoyer will take his place. Jack Larscheid, Tom Green and Ken Uelton round out a good group of running backs.

To catch the aeriels, there's Farrell Funston, Bob Denton, Metoyer, Larscheid and Chuck Chatfield back from last year. Two sophomores, LE Ola Murchison and RH Norman Bass, are outstanding receivers.

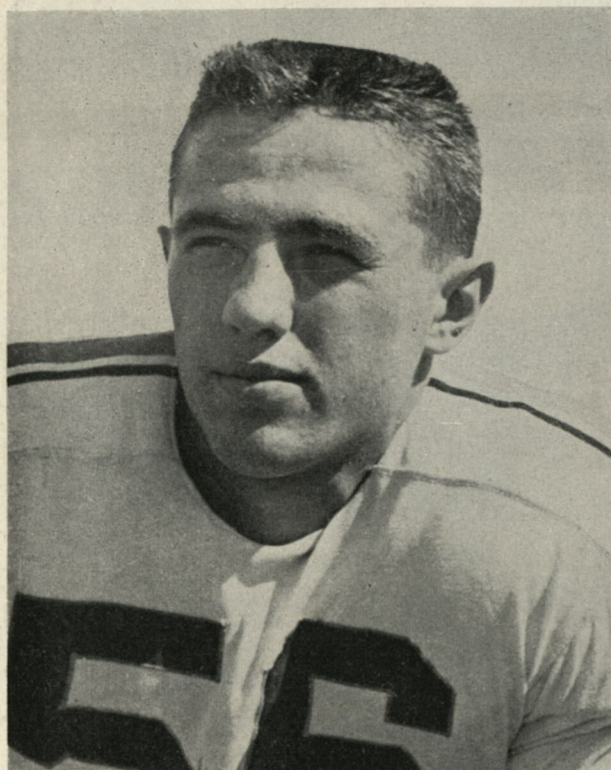
The Tigers of "Moose" Myers are an explosive, colorful offensive team. Fans who like their football served up fast and furious will like this club.



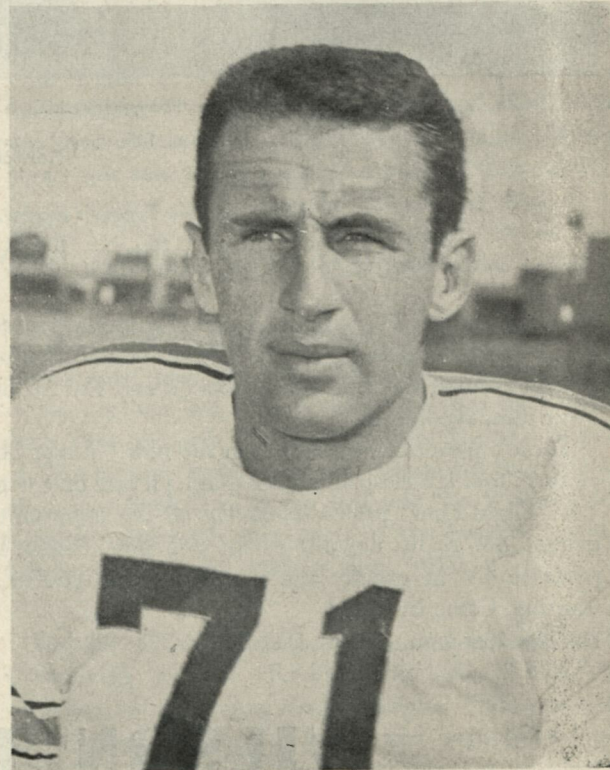
QUARTERBACK TOM FLORES

COLLEGE OF PACIFIC SERIES

	SD	COP
1935	6	19
1941	12	6
1946	13	19
1948	14	41
1949	14	62



FULLBACK TOM GREEN



END BOB DENTON



Tiger's Alphabetical Roster

Name and Position	Wt.	Ht.	Age	Hometown
*ALLERDICE, Lee (e)	183	5'9"	25	Snohomish, Wash.
BASS, Norman (hb)	193	6'2"	19	Vallejo
BATESON, Dick (t)	188	6'	20	Wilmington, Del.
BURNS, Stan (c)	210	5'11"	19	Salinas
CASTLES, Ken (g)	220	6'1"	20	Stockton
CHATFIELD, Chuck (hb)	171	5'11"	21	Sacramento
CORONADO, Bob (hb)	178	6'2"	20	Vallejo
COX, Rich (hb)	160	5'10"	20	Sacramento
*DENTON, Bob	215	6'4"	22	Stockton
FILICE, Chuck (qb)	170	5'9"	21	Santa Cruz
*FLORES, Tom (qb)	187	6'1"	20	Sanger
FOWLER, Bill (e)	187	6'5"	18	San Jose
*FUNSTON, Farrell (e)	202	6'2"	21	Dixon
GIOVANNONI, Gary (e)	200	6'2"	19	Oakdale
GOLENOR, Joe (hb)	178	6'	21	French Gulch
*GREEN, Tom (fb)	193	5'11"	22	Long Beach
HAWKINS, Wayne (t)	213	5'11"	19	Summit City
HICKS, Bob (fb)	180	5'11"	21	Janesville
HOLT, Jim (fb)	185	5'11"	23	Stockton
HUBB, Gary (qb)	168	5'11"	19	Los Angeles
JONES, Larry (t)	213	6'1"	20	Turlock
KAMMERER, Carl (t)	228	6'3"	20	Lodi
LANDER, Chuck (e)	191	6'	21	Los Angeles
*LARSCHIED, Jack (hb)	151	5'6"	24	Pleasant Hill
LONG, Bob (c)	218	5'11"	21	Hollister
MALAPASUTO, Joe (g)	197	6'	19	Van Nuys
METOYER, Roger (hb)	180	5'11"	21	Hawthorne
MURCHISON, Ola (e)	193	6'3"	19	Forest Hill
PAYTON, Harlin (t)	205	5'11"	23	Carmichael
PESSIN, Steve (g)	194	5'10"	19	Brooklyn, N.Y.
*RUTTER, Roland (c)	209	6'2"	26	Hawthorne
SARTWELL, Bob (g)	203	6'1"	20	Salinas
SCHWARTZ, Ed (fb)	193	6'	19	San Jose
SIINO, Sal (g)	189	6'	24	Pittsburg
SOWASH, Ed (e)	194	6'	20	Vallejo
*STRIEGEL, Bill (t)	219	6'2"	20	Chico
*SWANSON, Stan (g)	178	5'9"	23	Inglewood
THUSH, Wayne (hb)	170	6'1"	19	San Jose
*USELTON, Ken (fb)	193	5'11"	21	Cloverdale
*VERA, Adrian (c)	205	5'10"	19	Stockton
WALLACE, Ed (t)	208	5'11"	22	San Francisco
WALLACE, Henry (hb)	183	6'1"	19	Long Beach
*WEAVER, Floyd (g)	217	5'11"	23	Stockton
WHITE, Sherman (t)	222	6'1"	19	Bakersfield
*WILLIAMS, John (t)	205	5'8"	24	Chowchilla
*YAMAMOTO, Mich (c)	205	6'	21	Torrance

*Number of letters won.

Refreshes
without
filling!



Live Modern...smoke modern L&M

Hey Dad, light
into that
Live Modern
flavor!

I'm way ahead
of you Son!
L&M wins for
taste and flavor!

...box or handy pack...
Either way you win today with **L&M**

College of the Pacific

PROBABLE STARTING LINEUP

No.	Name	Position
88	Farrell Funston	LE
73	John Williams	LT
61	Ken Castles	LG
55	Roland Rutter	C
68	Bob Sartwell	RG
74	Bill Striegel	RT
86	Bob Denton	RE
15	Tom Flores	QB
24	Roger Metoyer	LH
45	Chuck Chatfield	RH
39	Tom Green	FB

THE SQUAD

10 Filice, QB	47 Coronado, HB	72 Payton, T
14 Hubb, QB	50 Long, C	73 Williams, T
15 Flores, QB	52 Vera, C	74 Striegel, T
20 Wallace, H., HB	54 Burns, C	75 Hawkins, T
21 Larscheid, HB	55 Rutter, C	77 Kammerer, T
24 Metoyer, HB	56 Yamamoto, C	78 Jones, T
31 Holt, FB	60 Swanson, G	79 White, T
32 Uselton, FB	61 Castles, G	80 Alford, E
33 Schwartz, FB	62 Siino, G	82 Giovannoni, E
35 Hicks, FB	63 Weaver, G	83 Fowler, E
39 Green, FB	64 Malpasuto, G	84 Lander, E
41 Golenor, HB	66 Pessin, G	85 Murchison, E
42 Cox, HB	68 Sartwell, G	86 Denton, E
43 Thush, HB	70 Wallace, Ed., T	87 Sowash, E
44 Bass, N., HB	71 Bateson, T	88 Funston, E
45 Chatfield, HB		

San Diego

PROBABLE STARTING LINEUP

No.	Name	Position
87	Dallas Evans	LE
77	Rey Dee Fackrell	LT
67	Ray Glaze	LG
55	Everett Hughes	C
60	Wayne Whitby	RG
75	Jerry Ohlin	RT
89	Braxton Pinkins	RE
12	Joe Duke	QB
34	Alberto Silva	RH
20	Karl Jordan	LH
33	Bob Nelson	FB

THE SQUAD

11 Booth, QB	34 Silva, FB	69 Smith, G
12 Duke, QB	51 Magee, Dennis, C	70 George, T
16 Magee, Don, QB	54 Moss, C	72 Brock, T
20 Jordan, HB	55 Hughes, C	74 Vierra, T
21 Goodwin, HB	56 Ponton, C	75 Ohlin, T
22 Harkell, HB	60 Whitby, G	77 Fackrell, T
23 Ventura, HB	62 Hull, G	80 Romig, E
24 Tarlton, HB	63 Havens, G	81 Shank, E
25 McGehee, HB	65 Cano, G	82 Guichard, E
27 Jones, HB	66 Millum, G	83 Canizales, E
30 Schimpf, FB	67 Glaze, G	87 Evans, E
33 Nelson, FB	68 Rodarte, G	89 Pinkins, E

REFEREE—E. BANNISTER
UMPIRE—W. W. WILSON
FIELD JUDGE—KEITH LLOYD
HEAD LINESMAN—DUANE MALEY
TIMER—DON GIBSON



Aztec's Alphabetical Roster

Name and Position	Age	Ht.	Wt.	Hometown
BOOTH, Jerry (qb)	19	6'2"	190	San Diego
BROCK, Keith (t)	23	6'2"	190	Glendora
*CANIZALES, Al (t)	22	6'1"	195	Globe, Ariz.
CANO, Octavio (g)	21	5'11"	195	Los Angeles
DUKE, Joe (qb)	25	5'9"	168	El Cajon
*EVANS, Dallas (e)	22	6'1"	190	San Diego
*FACKRELL, Rey Dee (t)	25	6'	212	San Diego
GEORGE, Don (t)	20	5'10"	205	Escondido
GLAZE, Ray (g)	23	5'11"	200	Baldwin Park
GOODWIN, Daryl (hb)	22	5'11"	188	Laguna Beach
GUICHARD, Tom (e)	17	6'	185	San Diego
HAVENS, Wade (g)	18	6'1"	195	San Diego
HARKELL, John (hb)	26	6'	160	Bethlehem, Pa.
*HUGHES, Everett (c)	21	6'	195	Glendora
HULL, Jim (g)	24	6'1"	200	San Diego
JONES, Phil (hb)	24	5'11"	180	Laguna Beach
JORDAN, Karl (hb)	21	5'9"	194	San Diego
MAGEE, Dennis (c)	19	6'	230	National City
*MAGEE, Don (qb)	21	5'10"	175	National City
*McGEHEE, Cecil (hb)	22	5'10"	170	Glendora
MILLUM, Jon (g)	17	5'11"	175	El Cajon
MOSS, Bob (c)	18	6'1"	230	San Diego
*NELSON, Bob (fb)	21	6'	190	San Diego
*OHLIN, Jerry (t)	20	5'9"	215	San Diego
*PINKINS, Braxton (e)	25	6'2"	190	E. Chicago, Ind.
PONTON, Bob (c)	26	6'2"	205	Vista
RODARTE, Joe (g)	22	5'8"	190	Indio
*ROMIG, Jim (e)	25	5'11"	175	Oxnard
*SCHIMPF, Larry (fb)	22	5'10"	175	Corona
*SHANK, Bob (e)	18	6'2"	180	Brawley
SILVA, Alberto (hb)	24	6'1"	190	Los Angeles
SMITH, Edward (g)	19	5'10"	180	El Cajon
TARLTON, Michael (fb)	18	5'11"	160	San Bernardino
VENTURA, Manuel (hb)	23	5'6"	160	San Diego
VIERRA, John (t)	23	5'11"	215	La Jolla
WHITBY, Wayne (g)	20	5'9"	200	Compton

*Number of letters won.

Refreshes
without
filling!



Aztec Coaches



DR. PAUL GOVERNALI, HEAD COACH, will lead San Diego State's football forces for the second time this season.

In his first year as Aztec head mentor, he compiled a record of 4 wins, 3 losses and 2 ties, a creditable first-year showing against CCAA and independent opposition.

Prior to coming to San Diego State, Governali was backfield coach at Columbia for six years under Lou Little.

As a player at Columbia, he was acclaimed, in 1941, as one of the greatest passers in football history, completing 42 per cent of his passes for 818 yards or 76 per cent of Columbia's total offense yardage. In 1942, he held the nation's passing record with 1,442 yards gained on 87 passes completed in 165 attempts. He also tied a national record by throwing 19 touchdown passes to tie a national record. That year Governali was captain and All-American quarterback of the Lions' eleven, and was awarded the Maxwell Memorial Award.

Born Jan. 5, 1921, he is married and has two children, Paul, 5, and Jean, 3.



Schutte

WILLIAM H. "BILL" SCHUTTE, LINE COACH—Bill Schutte will handle the line coaching assignment again this season. He served as head coach during the period 1947-55, and compiled a 48-35-4 won-lost-tied record. Schutte played prep football at San Diego High School and was a three-year letterman at the University of Idaho, where he was graduated in 1933. He is 47 and unmarried.

FRANK VITALE, END COACH, also is starting his second season as an Aztec coach. Prior to coming to San Diego, he was an associate of Paul Governali at Columbia where he served as freshman football coach and end coach. Vitale played his college football at



Vitale



Smith

Cornell, where he was named the school's most valuable player in 1951. He was also the stand-out player in the East-West Shrine game in San Francisco that year. He is 26, unmarried.

CHARLES R. "CHARLIE" SMITH, BACKFIELD COACH—Dean of San Diego State College coaches, Charlie Smith will be back to handle the backfield coaching spot this season. A graduate of San Diego State in 1931, Smith earned 12 letters in football, basketball and baseball. He has coached the baseball team the past 19 years and was varsity basketball coach for two seasons. Besides many administrative duties, Smith is also a scout for the Brooklyn Dodgers professional baseball organization.

Aztec Players

Coach Governali and aides built a new Aztec eleven last year, one which was to signal the start of a new era. Now, in 1957, they must start anew for losses due to ineligibility and personal reasons have placed the squad on a "no depth and inexperienced" basis.

The departure of four fine tackles and three experienced guards has left a gaping hole in the center of the line. The void is expected to be filled, but it will take time for the new personnel to accomplish this feat. Pre-season injuries also have delayed the process of welding a cohesive unit together.

Six returning lettermen are in the starting line-up. They are ends Braxton Pinkins, a top offensive and defensive wingman the past two seasons, and Dallas Evans, a speedster who made his debut last year. Rey Fackrell and Jerry Ohlin will open at the tackle spots, and Ev Hughes is again the starting pivot man.

Fullback Bob Nelson is the only starting monogram winner in the backfield.

Promising newcomers are quarterback Joe Duke, formerly of San Diego J. C.; halfbacks Karl Jordan and Al Silva and freshman Mike Tarlton. Silva also is expected to see much action at fullback.

Because of the lack of adequate depth, veterans Jim Romig and Al Canizales are expected to alternate their talents at guard, tackle and end.



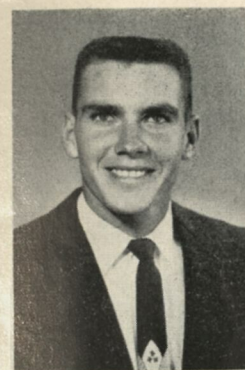
Veteran ends Brax Pinkins (left) and Dallas Evans



No. 27—Phil Jones, halfback



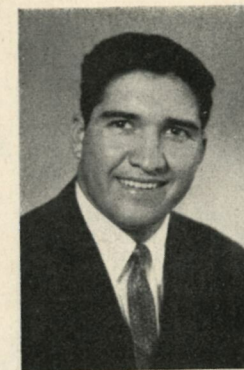
No. 77—Rey Fackrell, tackle



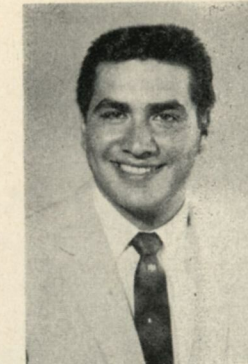
Jerry Booth
Quarterback
No. 11



Keith Brock
Tackle
No. 72



Albert Canizales
Tackle
No. 83



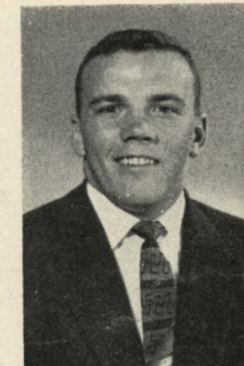
Octavio Cano
Guard
No. 65



Joe Duke
Quarterback
No. 12



Donald George
Tackle
No. 70



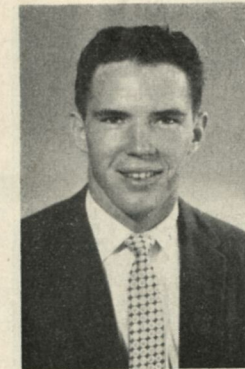
Ray Glaze
Guard
No. 67



Daryl Goodwin
Halfback
No. 21



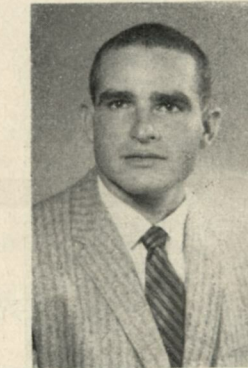
Thomas Guichard
End
No. 82



Wade Havens
Guard
No. 63



John Harkell
Halfback
No. 22



Everett Hughes
Center
No. 55



James Hull
Guard
No. 62



Karl Jordan
Halfback
No. 20



Dennis Magee
Center
No. 51



Don Magee
Quarterback
No. 16



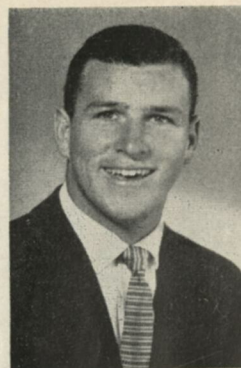
Cecil McGeehee
Halfback
No. 25



Jon Millum
Guard
No. 66



Robert Moss
Center
No. 54



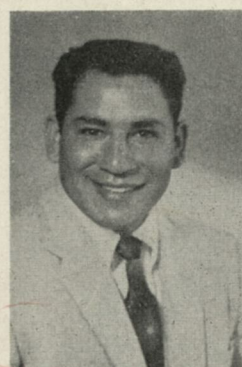
Bob Nelson
Fullback
No. 33



Gerald Ohlin
Tackle
No. 75



Robert Ponton
Center
No. 56



Joe Rodarte
Guard
No. 68



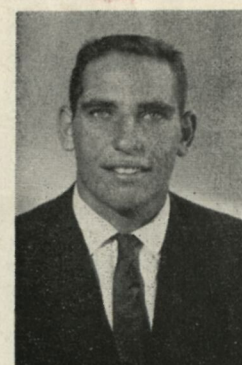
James Romig
End
No. 80



Larry Schimpf
Fullback
No. 30



Robert Shank
End
No. 81



Edward Smith
Guard
No. 69



Mike Tarlton
Halfback
No. 24



John Vierra
Tackle
No. 74



Wayne Whitby
Guard
No. 60

San Diego State Varsity Football

From kickoff to the final gun,
with **Cracker Jack**®
it's twice the fun!



Fresh and Crunchy
with **LOTS MORE** peanuts

Try **NEW** **Cracker Jack**® **Today**

ON SALE IN THE STADIUM

time for Living



More than anything else, a KitchenAid dishwasher brings you the precious gift of *time*. You have time to be a part of things—family fun and friends-after-the-game—secure in the knowledge that all's well in the kitchen.


Indeed, your dishes could not be in better care. Your KitchenAid is produced by Hobart—another way of saying it's *the finest made*. You'll see the evidence everywhere you turn: The new Timed Spray Cycle that "warms up" tableware and dishwasher interior, clears plumbing lines of cold water before the wash action starts. The easy-rolling, cushion-coated racks that take the guess out of loading. The revolving power wash system that leaves your

tableware *hospital-clean*. The separate blower that dries even fine crystal to perfection.

Yet—wonder of convenience—Hobart has contrived to work all these features into the *standard cabinet width*; you don't give up space you sorely need. By all means, see the new KitchenAid by Hobart. You'll find just the model to go with your kitchen, as surely as it goes with your way of life. And see the new food preparer and the electric coffee mill—they're KitchenAid, too!

See the new KitchenAid! Write The Hobart Manufacturing Co., KitchenAid Home Dishwasher Division, Dept. CFP, Troy, Ohio. In Canada: 175 George Street, Toronto, 2.

time for a KitchenAid®

The Finest Made...by 

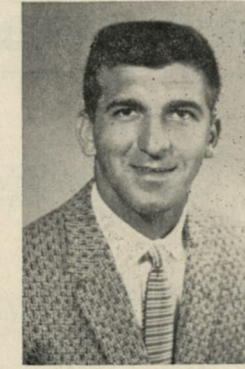
The World's Largest Manufacturer of Food, Kitchen and Dishwashing Machines



Braxton Pinkins
End
No. 89



Dallas Evans
Eid
No. 87



Chuck Perpich
Trainer and
Asst. Coach



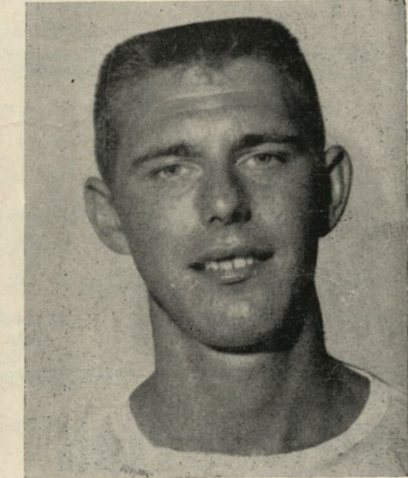
Spence Gartz
Sports Publicity
Director



Dr. O. S. Harbaugh has given much of his time and valuable experience to San Diego State athletic squads as team physician since 1928.



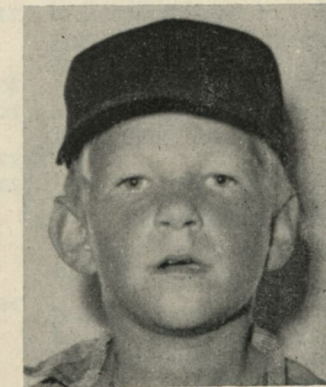
Dewey Whitmire and Ben Lyons, equipment managers in charge of uniform maintenance and materials.



Johnny Wilson
Team Manager



Billy Guichard
Water Boy

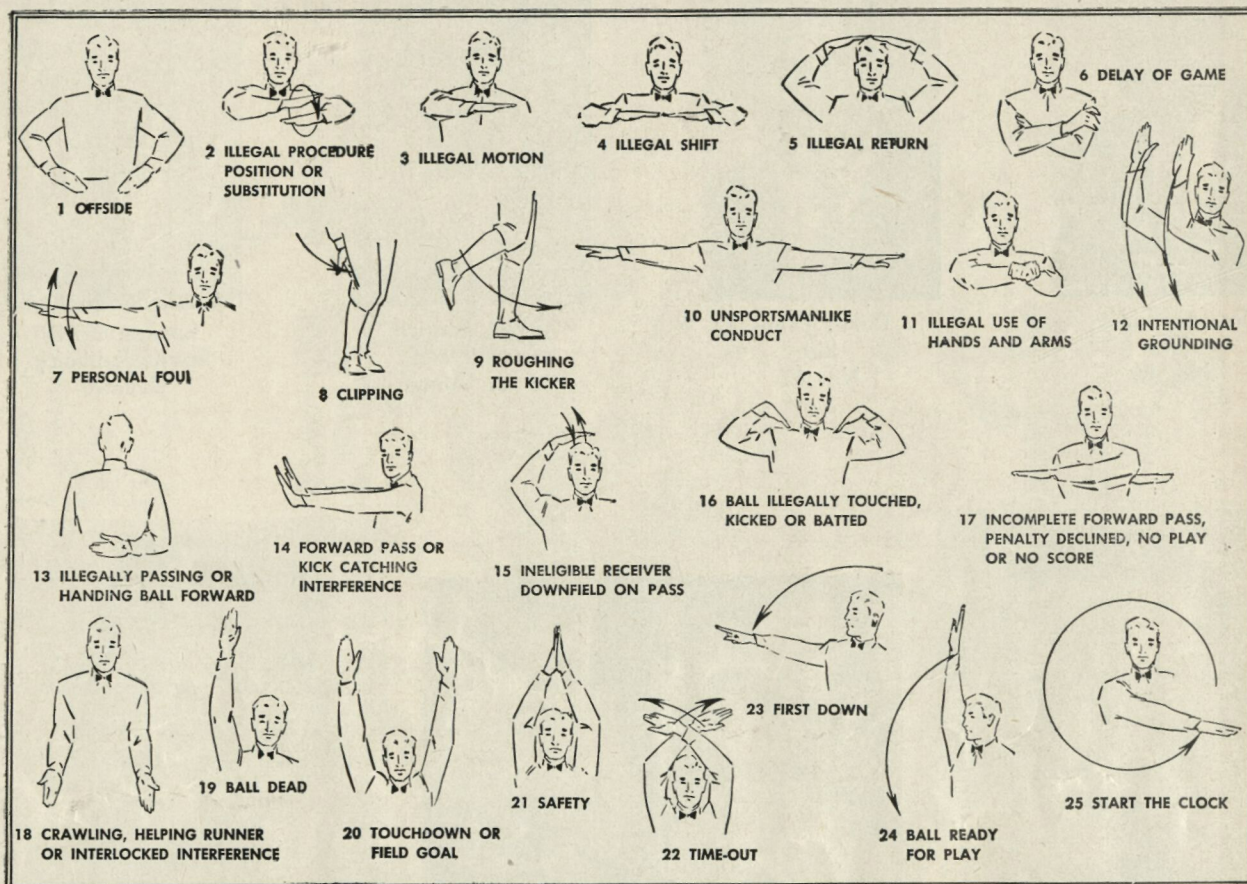


Bobby Kaplan
Towels



Steve Kaplan
Towels

OFFICIAL'S HAND and ARM SIGNALS



PENALTIES

1. Taking more than five times out during either half (except for replacement of injured player).
2. Illegal delay of game.
3. Failure to complete substitution before play starts.
4. Violation of kickoff formation.
5. Player out of bounds when scrimmage begins.
6. Putting ball in play before

15. Team not ready to play at scheduled time.
16. Violation of rules during intermission.
17. Illegal return of suspended player.
18. Interference by member of offensive team with defensive player making pass interception. (Also loss of down.)

29. Striking an opponent with fist, forearm, elbow or locked hands, kicking or kneeling - Mandatory disqualification of offending player plus loss of fifteen yards.
30. Foul within the one yard line - half the distance to the goal.
31. Interference by defensive team

LOSS OF FIVE YARDS

- Referee signals "Ready-for-play".
7. Failure to maintain proper alignment of offensive team when ball is snapped. Also, backfield man illegally in motion.
 8. Offside by either team or encroachment on neutral zone.
 9. Attempt to draw opponents

LOSS OF FIFTEEN YARDS

19. Interference with opportunity of player of receiving team to catch a kick.
20. Illegal use of hands or arms by offensive player.
21. Tackling or blocking defensive player who has made fair catch.
22. Roughing the kicker.

OTHER PENALTIES

32. Forward pass being touched by ineligible receiver beyond the line of scrimmage - loss of fifteen yards from spot of preceding down and loss of a down.
33. Illegal touching of kicked ball

offside.

10. Crawling by runner.
11. Illegal forward pass (includes intentional grounding of forward pass). Also loss of down.
12. Taking more than two steps after Fair Catch is made.
13. Player on line receiving snap.
14. Any violation of the scrimmage formation.
23. Piling up, hurdling, clipping.
24. Tackling player out of bounds, or running into player obviously out of play.
25. Coaching from sidelines.
26. Failure to stop one full second following shift.
27. Defensive holding.
28. Invalid Signal for Fair Catch.

within opponent's ten yard line - touchback.

34. Flagrant rough play or unsportsmanlike conduct - Mandatory disqualification plus loss of fifteen yards.
35. Eligible pass receiver who goes out of bounds and later touches a forward pass - loss of down.

Aztec Basketball

The 7-Up Bottling Company of San Diego presents the 1957-58 schedule of the San Diego State College basketball team. The Aztecs are defending champions of the California Collegiate Athletic Association, and represented its district in the NCAA small college championships at Evansville, Ind., last year.

1957-58 TENTATIVE SCHEDULE

Nov. 30	Alumni, at San Diego	*Jan. 31	Fresno State College, at Fresno
Dec. 3	Pasadena Col., at Pasadena	Feb. 1	San Jose State, at San Jose
Dec. 6	San Diego Marines, at State	*Feb. 7	Los Angeles State, at Los Angeles
Dec. 7	Presidio of San Francisco, at San Diego	*Feb. 8	California Polytechnic, at San Diego
Dec. 13	Whittier College, at San Diego	Feb. 14	Loyola University, at Long Beach City College Gym
Dec. 18	Loyola University at San Diego	Feb. 15	Pepperdine College, at Long Beach City College Gym
Dec. 28	Redlands University, at Redlands	*Feb. 21	California Polytechnic, at San Luis Obispo
Jan. 3	Whittier College, at Whittier	*Feb. 22	Univ. of Calif. at Santa Barbara, at Santa Barbara
Jan. 4	Pepperdine College at San Diego	*Feb. 28	Long Beach State College, at San Diego
*Jan. 10	Fresno State College, at San Diego	*Mar. 1	Univ. of Calif. at Santa Barbara, at Santa Barbara
Jan. 11	University of Arizona, at San Diego	*California Collegiate Athletic Association Games	
*Jan. 18	Long Beach State College, at Long Beach		
Jan. 24	Arizona St. Tempe, at San Diego		
*Jan. 25	Los Angeles State, at Los Angeles		

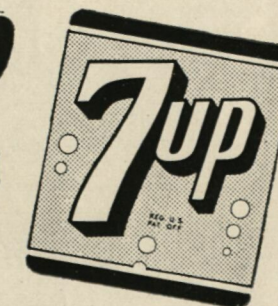
Thirsty?

Nothing

Does It Like

7-Up

"fresh up"
WITH





Band Director: Norman Rost (inset)

