



11-3-1956

November 3, 1956 Football Program, UOP vs. University of Tulsa

University of Tulsa

Follow this and additional works at: <https://scholarlycommons.pacific.edu/ua-football>

Recommended Citation

University of Tulsa, "November 3, 1956 Football Program, UOP vs. University of Tulsa" (1956). *Football*. 242.

<https://scholarlycommons.pacific.edu/ua-football/242>

This Book is brought to you for free and open access by the Athletics at Scholarly Commons. It has been accepted for inclusion in Football by an authorized administrator of Scholarly Commons. For more information, please contact mgibney@pacific.edu.

College of the Pacific vs University of Tulsa

OFFICIAL
PROGRAM

25c

SKELLY STADIUM

B. Burroughs

Saturday, November 3, 1956 ... 1:30 p.m.

JOHN ZINK COMPANY

Attic Fans
Floor Furnaces
Unit Heaters
Central Heaters
(forced air)
Conversion Burners
BURNERS FOR USE IN:
Gasoline Plant Boilers
Drilling Boilers
Treating Furnaces
Heating Boilers
Power Boilers
Air Heaters
Smokeless Field Flame Burners

Spartan
BUILDING MATERIALS SUPER MARKET
LUMBER & HARDWARE

1800 North Sheridan Rd.

Phone TE 8-3381

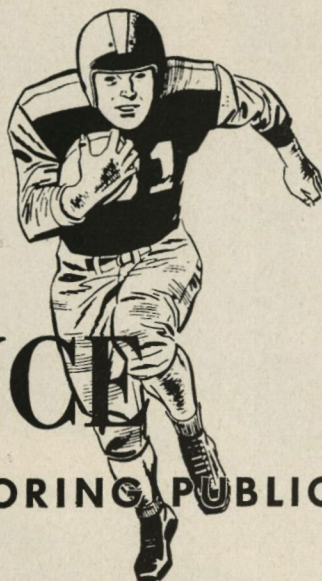


*The University Of Tulsa
Invites You*



PROVEN PERFORMANCE

(JUDGED BY THE MOTORING PUBLIC)



New Skelly Supreme Gasoline with
Keotane* offers
14.6% **3** EXTRA **12.7%**
OCTANE POINTS
MORE POWER PERFORMANCE EFFECT MORE MILEAGE

When new Keotane formula was introduced in Skelly Supreme gasoline last April, we knew it was good... ten years of laboratory tests and thousands of miles of actual road testing by Southwest Research Institute had proved it. But the most important test of all was yet to come... the trial of Keotane by motorists themselves!

Well, thousands of motorists have tried it now, and frankly, the experiences they tell amaze us. They are getting better results, and getting them faster, than we thought possible!

Increased performance and economy aren't the only things these enthusiastic customers report. Smoother idling, faster starts, cleaner spark plugs are just a few of the many benefits they have found.

Test drive Keotane today. You'll be surprised just how much pure driving pleasure your car can deliver!

By the makers of Skelly Supreme...world's lowest consumption motor oil.

SKELLY OIL COMPANY
TULSA • KANSAS CITY

*(Trademark Skelly Oil Company)



The University of Tulsa is pleased with the accomplishments of its Athletic Department. Under the able leadership of Athletic Director Glenn Dobbs, Head Coach Bobby Dobbs, Head Coach Clarence Iba, and their associates, the schedules are improving and the Golden Hurricane is swinging back into the type of aggressive play that spectators enjoy and admire. The spirit of the teams and their type of play are heartening to faculty, students and spectators.

Intercollegiate athletics as well as intramurals are considered an important part of the entire program of the university. The spirit of competition and enthusiasm engendered by these athletic events are a wholesome outlet for the exuberance of youth and the enjoyment of the audience.

The Athletic Department of the University, kept in proper focus with its educational objectives, performs a useful and needed function in campus and civic life.

Best wishes to the coaching staffs and squads for success in the 1956-57 season.

President Clarence I. Pontius

.. Follow the Hurricane ..

(1300 ON YOUR DIAL)



KOME is happy to once again bring you every thrilling play of the complete 10 game schedule of the "Golden Hurricane." Tony George, the popular voice of TU sports, will once again be at the microphone.

Attend the games when you can . . . when you can't, enjoy them on 1300, Tulsa's Favorite Spot on the dial for the "Best in Sports." All football games will be broadcast live, home and away.

ENJOY TU FOOTBALL ON KOME

Brought to you by

HAWK DAIRIES

GORDON'S APPLIANCE WAREHOUSES

818 N. Sheridan
3024 E. 11th
2421 E. Admiral

DIAMOND CLEANERS

1710 E. Admiral

Your Friendly SINCLAIR Stations

S. J. Whitman—39th & S. Peoria
119 E. 10th
C & D Service—3501 E. 11th
Chuck's—1822 E. 3rd
Mitt's—815 N. Sheridan
7736 E. Admiral Pl.
John Gish—701 S. Cheyenne
Sayes—Hwy. 33 & Garnett Rd.
McCall's—73rd & 11th

RADIO STATION KOME

5000
Watts

MBC & ABC AFFILIATES

1300 on
your Dial

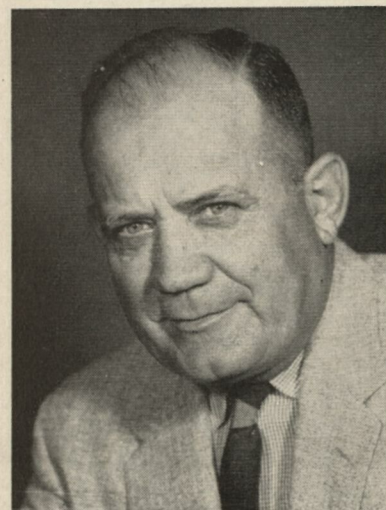


BOBBY DOBBS . . . Head Coach

Starred in Hurricane teams of the Sun Bowl in 1942, the Sugar Bowl of 1943. Entered West Point, played with Army's National Champions two seasons, also won honors in boxing, baseball, and basketball. Coached at Carswell Air Force Base, subsequently returned to West Point as backfield coach. Resigned Air Force in 1955 to assume Head Coach duties at TU.

GLENN DOBBS . . . Backfield Coach

Tulsa's first All-American. It was his sensational punting and passing that took Tulsa to the Sun Bowl in 1942, the Sugar Bowl in 1943.

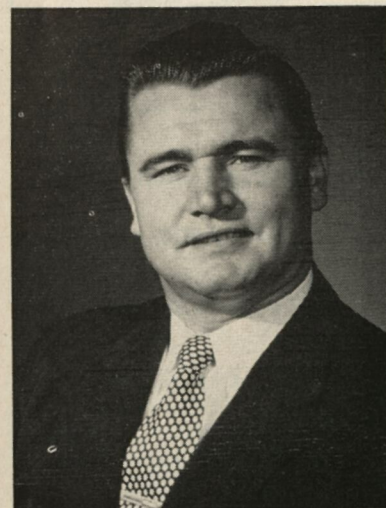


JESS THOMPSON . . . Line Coach

Central State graduate. Coached at Seminole, Jet, Cameron, Centenary College (Shreveport), and Mississippi Southern.

EARL PRESLEY . . . End Coach

Coached at Frederick High after graduation at Central Oklahoma State, then to Mangum, Duncan, and Bellflower, California. Earl coached both Glenn and Bobby Dobbs at Frederick High.



ROGERS LEHEEW . . . Line Coach

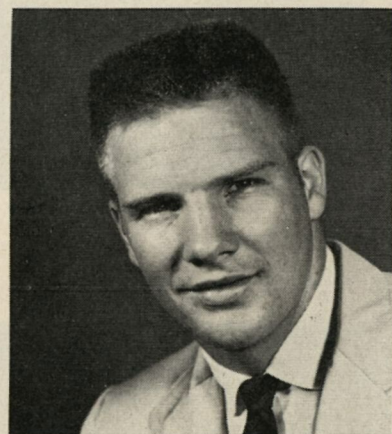
Entered TU in 1946, won four varsity letters, captained the 1949 team, was named All-Conference Guard. Helped Carswell Air Base win the National Service Championship in 1951.

'DOC' JENKINS . . . Trainer

Doc is the little, jovial man that's 'Johnny on the spot' when one of the TU players gets shaken-up or injured. It's Doc that works with pulled muscles, bruises and other injuries that plague the players during the games.



Compliments To T.U.

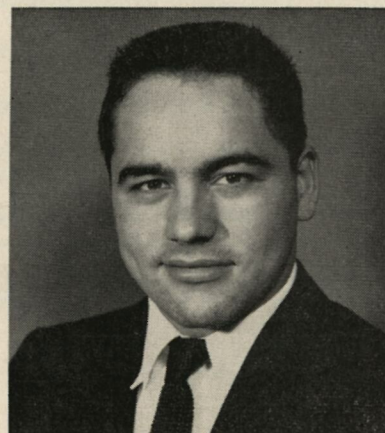


OPIE BANDY —

Bandy needs only experience to be the kind of player Coach Dobbs wants in his line. Opie is 6'1", 215-pounds and a 19-year old sophomore from Kingfisher. He was a four-sport man in high school and a member of the 1955 Oklahoma High school Oil Bowl team. Plays left tackle.

EARL SHUCK —

5'10" . . . 183-pounds . . . 22-year old senior halfback from Pitcher . . . Won four letters in football and three in basketball . . . All-Conference in football . . . Has good potential . . . Plans to coach after graduation.



"CAREFUL UNDERWRITING AND PROMPT

CLAIMS HANDLING TO INSURE YOUR INSURANCE NEEDS"



MID-CONTINENT CASUALTY CO.

MID-CONTINENT BUILDING

TULSA, OKLAHOMA

A juicy
hamburger...
So good
with
7-UP®



Engineering-Construction
Company

PIPE LINE CONTRACTORS-ENGINEERS

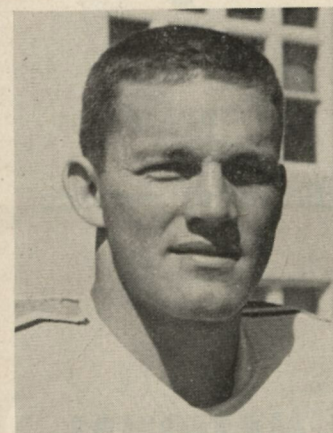
Tulsa, Oklahoma

Phone LU 3-5104

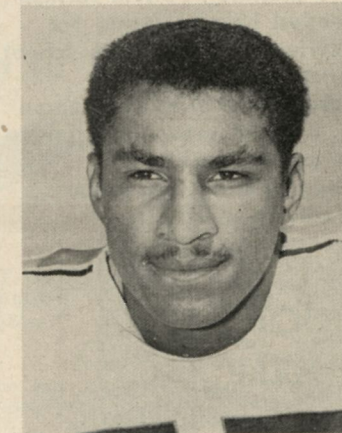
619 S. Detroit



L. TO R. — HEAD COACH JACK "MOOSE" MYERS, ASS'T COACH JOHN ROHDE, BACKFIELD COACH GENE "SKIP" ROWLAND, LINE COACH JOHN NIKCEVICH.



GALEN LAACK, LG

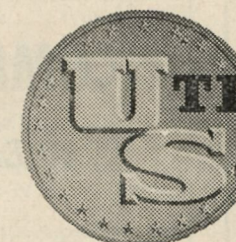


DICK BASS, LH



TOM FLORES, QB

MEMBER F. D. I. C.



**UTICA
SQUARE NATIONAL BANK**

TWENTY-FIRST AND UTICA

• TULSA, OKLAHOMA

sporting results . . .
businessmen's lunch . . .



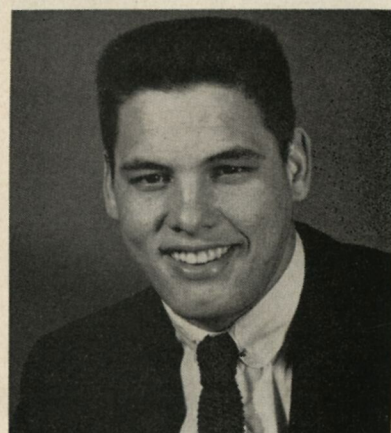
ORPHEUM CIGAR STORE

309 South Boston

CHerry 2-2882

THE RED CROSS SAYS:

Go Tulsa!

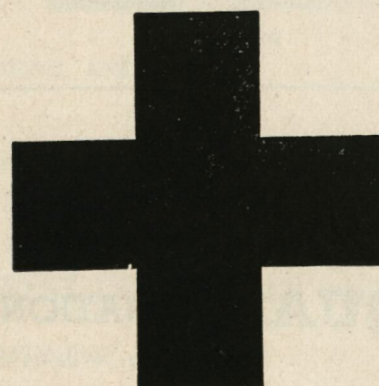


BILL VERBLE —

20-year old Junior from
Dallas . . . 6'1" . . .
215 pounds . . . Will furnish
needed help at tackle for
Hurricane . . . Won high school
letters in football and
baseball . . . All-City lineman
. . . Could move into line-up
as starting tackle . . .
Physical Education major . . .
Wants to coach after
graduation.

THE RED CROSS BLOOD BANK
NEEDS YOUR HELP

TULSA COUNTY
RED CROSS



602 S. Cheyenne

LUther 4-4281

HURRICANE

BACKERS FOR
OVER 50 YEARS

Complete

Banking Service

NATIONAL
BANK OF
COMMERCE

10 E. Third

Member F.D.I.C.

When the frost is on the pumpkin

And the footballs fill the air

That's the time to help the Hurricane

To cheer . . . and tear your hair

It's also time to check your cash

Work it! . . . and keep it nursed

When money matters . . . anytime's

The season to *Think* . . . **FIRST**

1 Speaking of Helping T.U.,
We contribute, of course, and also
sponsor a Business School *Scholar-*
ship.

2 You may tear your purse as
well. But there are always *personal*
loans if you "Think First".

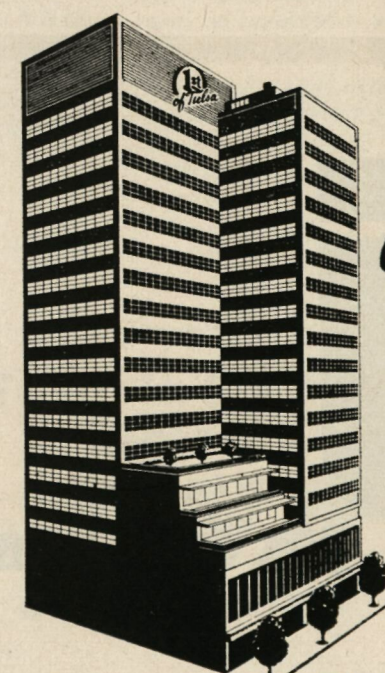
3 Reminds us . . . how convenient
our *checking accounts* are . . .

4 *Need cash?* For a car — appli-
ances — Home improvements . . .
"Think . . . (you know!)"

5 Protect stock certificates, —
bonds, insurance policies, valua-
bles, etc., in one of our *Safe*
Deposit boxes—less than 2¢ a day.

6 Let money work for you with
a First of Tulsa *Savings Account!*

7 Tulsa expression meaning "Get
ahead" . . . Keeping your head in
the ball game" . . . "Being wise
about money matters."



1st
of Tulsa
OUR 60TH YEAR

**FIRST
NATIONAL**
BANK & TRUST CO.

Member Federal
Deposit Insurance
Corporation

FIFTH AND BOSTON

DAVIS' SPORTING GOODS

EXCLUSIVE TULSA DISTRIBUTORS

OF

MacGregor Athletic Equipment

And Featuring Other Famous Brands of Sporting Goods.



POWER'S
SPANJIAN
HATCHERS'
SINDELAR
RIDDELL
BUTWIN
SPALDING

DAVIS' SPORTING GOODS
14 E. Third
TULSA, OKLA.

Preview—College of the Pacific

by
JOHN CHARVAT

The University of Tulsa has its work cut out this afternoon.

On six successive Saturdays of football, nary a single Hurricane contemporary has been able to tame College of the Pacific. The menacing Tigers bring to our village five victories, one tie and no defeats.

At anchor in the Tulsa harbor since belaboring Hardin-Simmons last week, the Hurricane's ship of state is listing with injuries incurred in the course of a 4-1-1 season. However, Skipper Bobby Dobbs has promised combat.

In the fading weeks of success in 1953, Tulsa tripped College of the Pacific 23-13. It is the only game of record between the Missouri Valley entry and the west coast independents from Stockton, Calif.

Head coach and athletic director at COP is Jack "Moose" Myers, a veteran of college play at UCLA and later the Philadelphia Eagles and Los Angeles Rams in professional ranks.

Myers became head coach in 1953 at the age of 28 and after three seasons with the tight T-formation discarded it in favor of a more wide open game which employs a flanker on almost every play.

The results are without question.

College of the Pacific stunned Colorado A & M in its opener 39-14. Kansas stalled the Tigers with a 27-27 tie, but since then the invaders have hardly messed their hair. Cincinnati (21-15), Fresno State (21-14), Marquette (28-6) and last week Washington State (33-12) fell victim to the Tigers.

A contrast of common opponents awaits naught. Cincinnati escaped with a 7-6 win over

the Tulsans, who turned around the next week to smash Marquette 54-0. On other occasions, TU defeated New Mexico A & M 27-6, Detroit 3-0, Hardin-Simmons 27-0 and tied Oklahoma A & M 14-14.

Tulsa did not avoid damage last week. Ray Boaz, the 155-pound sophomore left halfback from Altus, was lost for the season with a broken collar bone.

The absence of Boaz, along with left guard James Jolly and center Earl Kirsch, all from the second unit, has siphoned the Tulsa defense.

College of the Pacific presents a glittering array of young, talented backs headed by the sensational Negro sophomore Dick Bass. The elusive 185-pounder has scored seven touchdowns and leads in virtually all other departments, yet the past two games has seen only limited service.

Myers elected to hold Bass from combat unless needed, giving the youngster time to mend a rash of bumps and bruises accumulated through the first four games of the season.

Prior to that time, Bass was second in the nation in rushing. Only his absence from duty has kept him from maintaining that position.

There must be depth on the visitor's bench. With Bass dormant, Jack Larscheid was inserted and he responded with 129 yards on the ground last week against Washington State.

Tulsa's nationally ranked defense will again be seriously challenged. COP has averaged better than 365 yards per contest, a "bit" over the 209-yard average allowed by the Hurricane defenders.

Again, offense vs. defense at Skelly Stadium.

fly the finest

**To 60 U. S. Cities and 21 World
Centers Over Seas . . .**

FLY TWA
TRANS WORLD AIRLINES



For Reservations and Information
Call LUther 4-3471
or Call Your Travel Agent

415 S. Boston



30

YEARS

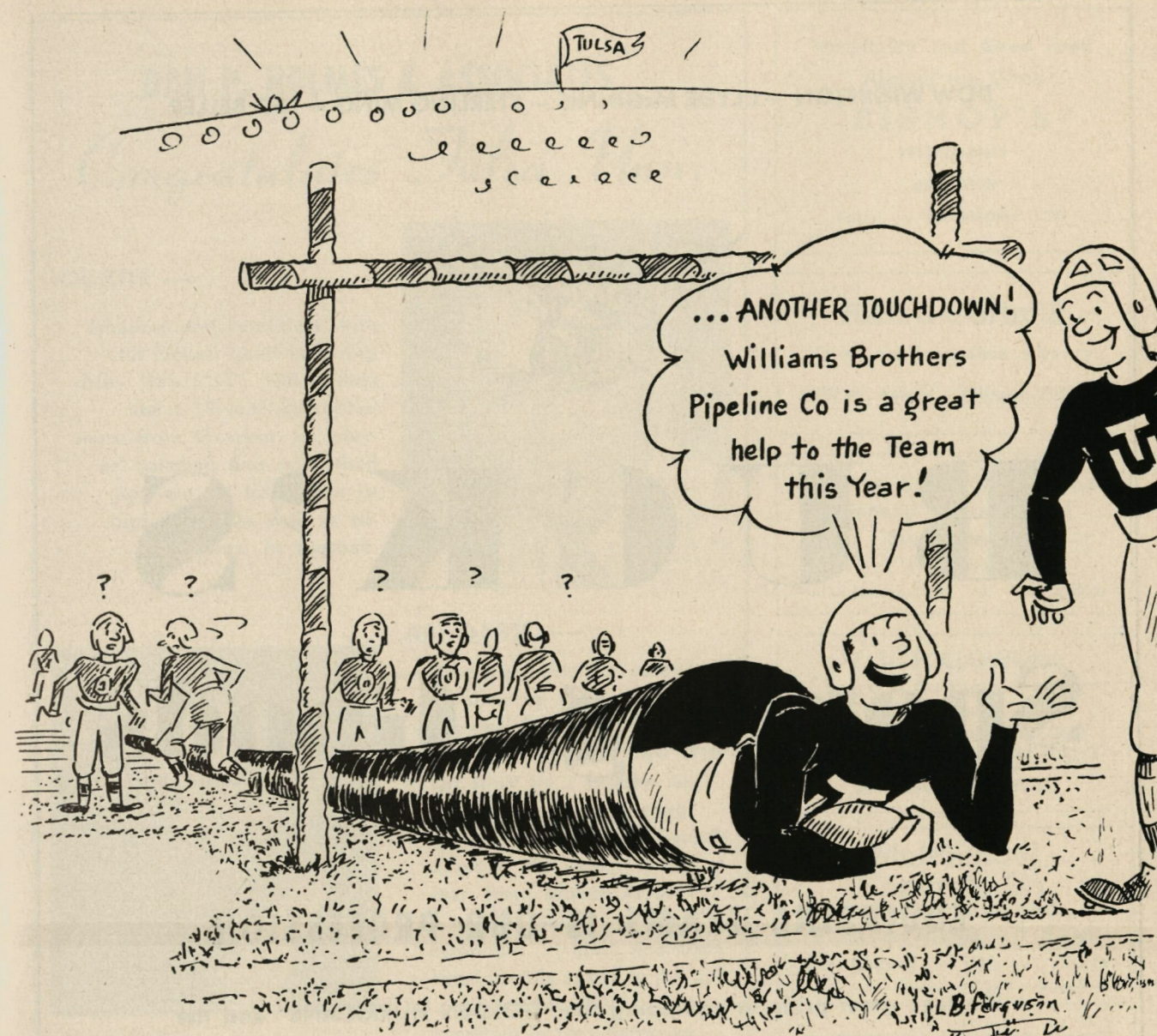
of

**FACILITIES
PRODUCTS
SERVICES**

from

**OVER FIFTY WAREHOUSES
IN THE UNITED STATES,
CANADA AND VENEZUELA.**

National Tank Company • Tulsa, Oklahoma



Oklahoma's Largest Chevrolet Dealer

FULLER - WHITE

Fourth & Elgin

DOW WIGINTON — CLYDE McGINNIS — STERLING MING — LEO BELLER



BUCK'S Sporting Goods

104 E. THIRD

EQUIPPING TEAMS IS OUR PROFESSION

We take great pride in equipping the "GOLDEN HURRICANE" and the

schools and teams of Tulsa and Eastern Oklahoma.

Distributors of the Quality Lines of Athletic Equipment

SAND KNIT *Rawlings* **SPOT BILT**

ATHLETIC CLOTHING

ATHLETIC EQUIPMENT

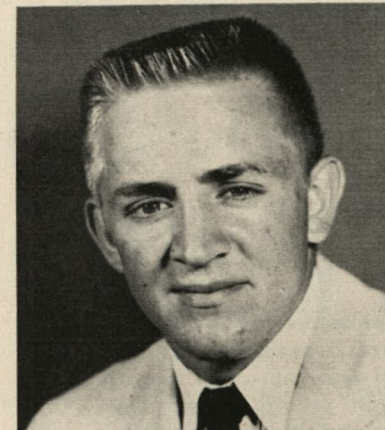
ATHLETIC SHOES

DAN P. HOLMES & ASSOCIATES

Congratulates Tulsa Univ.

BOB KITE —

Smallest end candidate, Kite still looked good in spring drills. He's 5'11", 180-pounds and a 19-year old sophomore from Crescent. He played baseball and basketball and was a track man in high school as well as all-Conference in football.



ART DAVIS —



Co-captain for the second consecutive year, figures to see more action than last year. His playing time was cut short by a broken leg suffered in the Wyoming game. At 5'10", 180-pounds, 22-year old senior letterman from Broken Arrow . . . a natural leader and tough opponent. . . quick and adds considerable speed to the line. . . has good drive and is excellent in play detection.

ALL KINDS OF INSURANCE

For Industry — The Individual — And The Home

Dan P. Holmes & Associates

DAN P. HOLMES

BURT B. HOLMES

INSURANCE AND BONDS

NATIONAL BANK OF TULSA BUILDING

Phone CHerry 2-7184

DAN P. HOLMES, Jr.

Hospitality and Good Food
Around the Clock

BISHOP'S

RESTAURANTS

Since 1913

TULSA — OKLAHOMA CITY

Rich & Cartmill

One-Stop Insurance Agency

109 W. 4th St. - GIBSON 7-4173

Seever, Smith & Thornton
General Insurance and

Surety Bonds

Philtower

Phone GIBSON 7-5171 - Tulsa 3, Okla.

T. U. FOLLOWERS!

See Our Costume Jewelry
Your Choice \$1.00

Also Diamonds—\$10,000

GROFF JEWELERS
SHERIDAN VILLAGE

**McMichael
Concrete Co.**

• ROAD BUILDING

• EXCAVATING • SAND

Dial CHerry 2-1194 - Tulsa

BURNETT'S FLOWER SHOP

4322 E. 11th St.

Flowers For All Occasions

We Deliver MADISON 6-5150

BUHL CLEANERS

Cleaning of Distinction

Since 1906



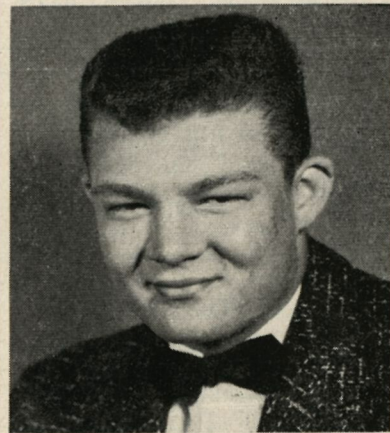
MAIN PLANT RANCH ACRES
2002 E. 11th St. 3320 E. 31st St.

Phone
MA 6-1133
TULSA

Phone
RI 7-0393
TULSA

BROWN-DUNKIN Says

Go! Go! T. U.!



BARNEY ILES —

Iles comes to the Hurricane from Overton, Texas, where he was four-sport man in high school. Coach Dobbs moved this prep quarter-back to a halfback slot and Barney proved to be a natural. He's 5'10", 170-pound, 19-year old junior. Iles is an engineering student with good grades.

Brown-Dunkin

Tulsa's Dominant Department Store

4th and Main

LUther 4-1311

TU...FOR OUTSTANDING ACADEMIC AND ATHLETIC ACCOMPLISHMENTS



Insurance Service You'll Appreciate
AETNA LIFE INS. CO. NBT Bldg.

Phone LU 4-6411



LEE BRADY —

Guard . . . of Nowata, stands 5'10" . . . backs it with 185 pounds . . . Twenty-years old . . . Lee is a sophomore and a sturdy addition to the Hurricane line.

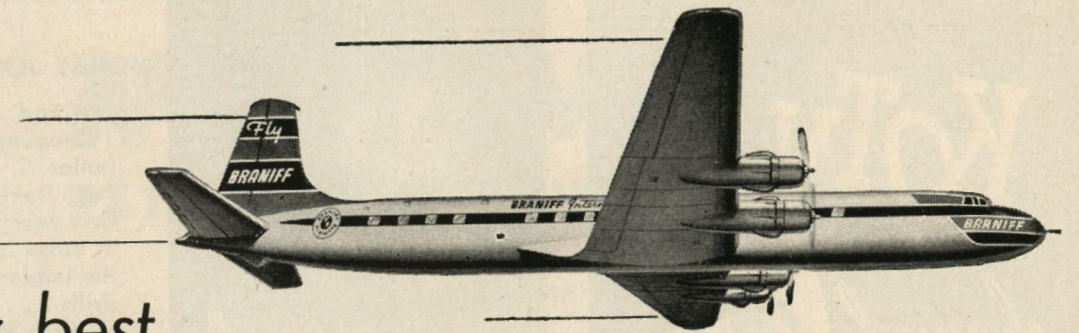
**DEE NAYLOR'S
X SERVICE**

ROAD SERVICE - WE 9-9500
21st and S. Harvard

**An Outstanding
Selection of Records**
"Music Is The Smile of
The World"

ROOF TERRACE MUSIC CENTER SHERIDAN VILLAGE

DRIVE ON HURRICANE!
DRIVE IN AT
ANGEL'S
Admiral & Memorial



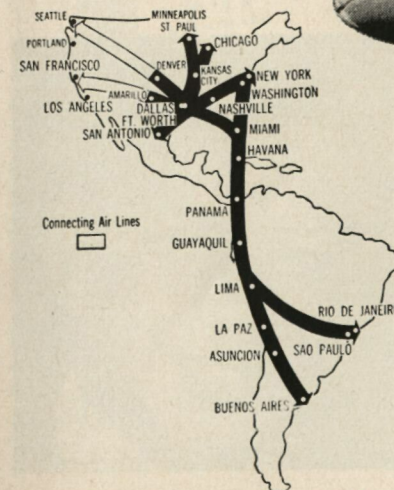
your best
ground-gaining play...

TAKE TO THE AIR!

To avoid the highway scrimmage to and from the game — and for business or pleasure travel anywhere, anytime — take to the air. Fly Braniff, arrive refreshed, have more time there.

BRANIFF
International
AIRWAYS

Telephone your nearest Braniff office
or your travel agent



Serving more than fifty cities in the U. S. A. and eight countries in South America

KOTV
channel **6** CBS

First In
TULSA

First In
TELEVISION

And...

FIRST IN
**SPORTS
COVERAGE**

6 STAR SPECIAL
6:10 p. m.

FINAL SCOREBOARD
10:45 p. m.
Monday through Friday

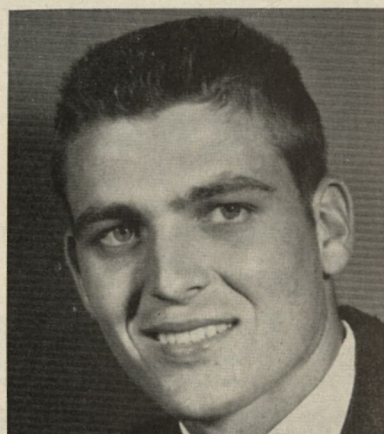


BOBBY JOE DAVIS —

Left End . . . A 6'1" . . .
190-pounds . . . 20-year old
junior . . . from Amarillo,
Tex. Davis will be playing his
first year of varsity football
in Tulsa . . . Mover right up
the ladder during spring
drills . . . he should be able
to push Rickenberg pretty
hard for that starting
assignment.

JIM HARDIN —

Quarterback . . . received
notice in high school . . .
in baseball and football as a
member of all-Conference
teams. He's 20-years old 6'1"
. . . 180-pounds and a junior
. . . from Birdville, Texas.
He is a god passer and shows
considerable promise.



JOHN ROWDEN —

End . . . Cushin . . . is a
twenty year old sophomore . .
who reaches six one . . .
weighs 200 pounds . . . Fast
for such a big man . . .
might very well make life
miserable for the opposition.

RON WILT —

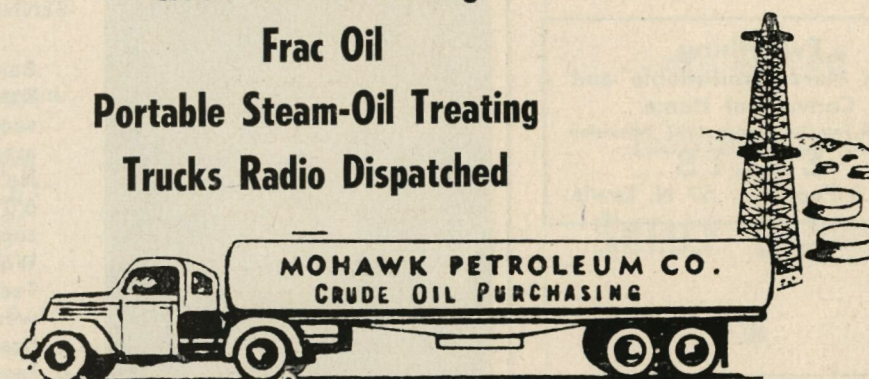
Guard . . . six-foot-two'er . . .
from Morgantown, West
Virginia . . . This nineteen
year old sophomore weighs
in at 215 . . . has a lot
of power.



MOHAWK

PETROLEUM COMPANY

Crude Oil Purchasing
Frac Oil
Portable Steam-Oil Treating
Trucks Radio Dispatched

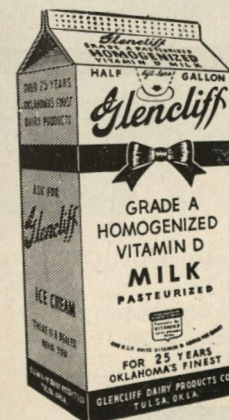


HEADQUARTERS
823 So. Detroit
Tulsa, Okla.
Phone LU 4-6441

AREA OFFICES
Okmulgee - Phone 3473 or 355 Pawkuska - Phone 1855
Shawnee - Phone 6597
Also Nowata - 1176 or Jenks SH 9-5701

Dairy Products Company

For Over
A Quarter Century
Oklahoma's Finest
Dairy Products



ICE CREAM
BOTTLED MILK
BUTTER
CHEESE

519 E. 7th

Tel. LU 5-1114

 **TULSAIR**
CHARTER SERVICE, INC.
 Late Model Beechcrafts
 CALL TE 5-7651 - Days RI 2-8105 - Nights

Everything
 For a More Comfortable and
 Convenient Home
 And All Famous Brands 1957 Television
ELLIS
 15th & Peoria 57 N. Lewis

Western Supply Co.
 NORDSTROM VALVES -- CRANE VALVES
 CHAPMAN VALVES -- TAYLOR FITTINGS
 AND FLANGES
 The Home of Western Heat Exchangers
 Tulsa, Okla.

Compliments of . . .
**McNamar Boiler &
 Tank Company**

Let's Go Tulsa!
 Your cheers will aid
 the Golden Hurricane
 as they have helped
 the Baseball Oilers in
 their Texas League
 campaigns.



FALCON SEABOARD Says "GO HURRICANE"

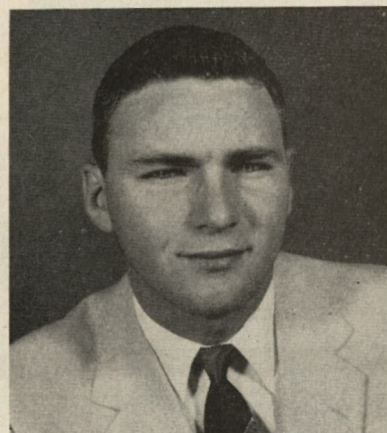


BENNIE DAVIS —

Bennie is the third of three
 Davises listed on the pre-
 season "B" team and they
 are not related in any way.
 He's a smooth working
 6'0", 180-pound, 19-year old
 sophomore from Fort
 Worth, Texas. Davis attended
 Technical High school and
 was all-Conference in
 baseball, basketball and
 football.

MAX BLACK —

Max is a 21-year old senior
 from Brownfield, Texas.
 As a junior, he played 550-
 minutes of a possible 600.
 . . . holds two varsity letters
 in football. He's 6'0" and
 190-pounds with a keen
 desire to play his position
 well both on defense and
 offense. Black is a top-flight
 candidate for some sectional
 honors. He is a co-captain
 in 1956.



Stanolind Building

LUther 7-6592

COMMERCIAL PUBLISHERS Says "GO HURRICANE"

BILL FROMAN —

Another letterman and senior,
 Bill is probably the best
 pass catcher the Hurricane
 has on the squad. He's 6'1",
 190-pounds and a 23-year
 old student from Miami.
 Bill has completed his
 military service. He will
 undoubtedly be called upon
 frequently this fall by Coach
 Dobbs to aid the Hurricane
 offensive punch.



DUWAYNE GANDY —

Starting as a halfback, Gandy
 was moved to the fullback
 slot after spring practice and
 will be called upon fre-
 quently to use his power.
 He's 5'10", 180-pounds and
 a 20-year old junior from
 Chapel Hill, Texas. In the
 spring, Duwayne is a mem-
 ber of the Golden Hurricane
 pitching staff.



For fine football follow the Golden Hurricane.
 For fine Letterpress or Offset Printing call
 Commercial Publishers. Let us prove we offer one of the
 few Complete Printing Services available in Tulsa

— Printers of today's program —

Commercial Publishers

DISTINCTIVE LETTERPRESS & OFFSET PRINTERS
 1630 S. MAIN • PH. Gibson 7-8125

WICKHAM'S
 CROWN BRAND
 WEINERS

are served

Exclusively at
SKELLY STADIUM

Always ask for
 our other fine
 CROWN BRAND
 MEAT PRODUCTS

**BACON
 HAM
 CURED MEATS
 LUNCH MEATS**

**WICKHAM
 PACKING CO.**
 SAPULPA

ALEXANDER & ALEXANDER, INC. AND ASSOCIATES PEARCE, PORTER & MARTIN
522 South Boston INSURANCE Phone LU 4-1301

UNIVERSITY OF TULSA

No.	Name	Pos.	Ht.	Wgt.	Age	Class	Home
10	Jim Pirtle	QB	5-10	170	19	Soph	Ada
11	Benny Davis	QB	6-0	180	19	Soph	Fort Worth, Texas
12	Jim Hardin	RE	6-1	180	20	Junior	Birdville, Texas
13	George Cagliola	QB	5-10	175	20	Soph	Norristown, Pa.
14	Charlie Wynes	QB	6-0	175	21	Senior	El Reno
22	Barney Iles	LH	5-10	170	19	Junior	Overton, Texas
23	Ronnie Morris	RH	6-1	185	20	Soph	Tulsa
25	Lynn Capps	FB	5-10	185	23	Soph	McKinney, Texas
26	Art Balcerzak	RH	5-11	175	21	Junior	Medina, N. Y.
33	Dick Scholtz	FB	6-0	195	21	Senior	Tulsa
34	Earl Shuck	FB	5-10	180	22	Senior	Pitcher
35	Duwayne Gandy	FB	5-10	180	20	Junior	Chapel Hill, Texas
36	Clyde McLean	FB	5-10	170	19	Junior	Brady, Texas
41	Dick Hughes	LH	5-10	175	25	Senior	Tulsa
42	Al Backus	RH	6-1	170	21	Senior	Ada
43	Dave Laird	LH	5-9	155	19	Soph	Tipton
—	Ray Boaz	LH	5-9	155	20	Soph	Altus
50	Tom Harris	C	5-11	200	19	Soph	Cushing
52	Max Black	C	6-0	190	21	Senior	Brownfield, Texas
53	Roger Wickersham	C	6-0	195	18	Soph	Sand Springs
—	Earl Kirsch	C	5-10	185	20	Soph	Pittsburgh, Pa.
61	Chuck Yonkers	RG	6-0	190	22	Senior	Henryetta
62	Odis Fuller	RG	5-11	200	19	Soph	Temple, Texas
63	Lloyd Day	LG	5-11	190	20	Junior	Oklahoma City
64	Art Davis	LG	5-10	180	22	Senior	Broken Arrow
65	Ron Wilt	RT	6-2	215	19	Soph	Morgantown, W. Va.
66	Lee Brady	LG	5-10	185	20	Soph	Nowata
—	James Jolly	LG	6-1	190	19	Soph	McLean, Texas
68	Richard Cohea	RG	6-2	200	19	Soph	Tulsa
70	Opie Bandy	LT	6-1	210	19	Soph	Kingfisher
71	Dean Slayton	RT	6-3	205	19	Junior	Price, Texas
72	John O'Neill	LT	6-1	180	18	Soph	Duncan
73	John Cegielski	LT	6-2	220	21	Senior	Chicago, Ill.
74	Bill Verble	LT	6-1	215	20	Junior	Dallas, Texas
75	Dick Walz	RG	6-2	205	22	Senior	Peoria, Ill.
77	John Rowden	LG	6-1	200	20	Soph	Cushing
80	Dave Selph	LE	6-0	190	19	Soph	Heavener
81	Bill Froman	RE	6-1	190	23	Senior	Miami
83	Jim Combs	LE	6-1	185	19	Junior	Lawton
85	Bob Kite	RE	5-11	180	19	Soph	Crescent
87	Dick Brown	RE	6-2	195	19	Soph	Wagoner
88	Billy Neal	LE	6-1	185	19	Soph	Duncan

Boosting the GOLDEN HURRICANE



MAX R. BRAND

AERO COMMANDER DISTRIBUTORS

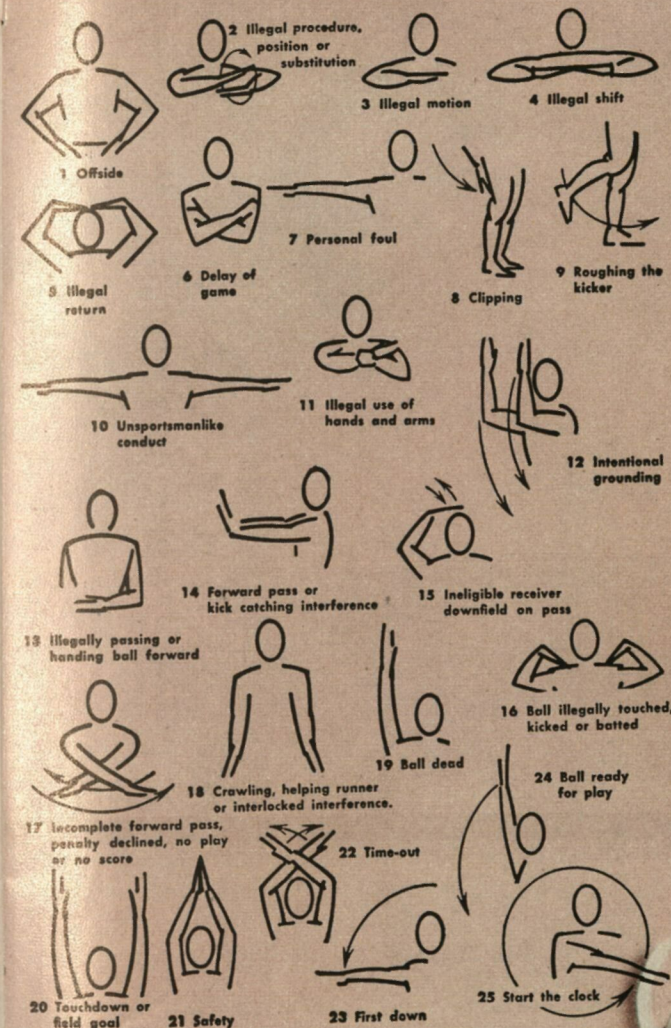
Hangar No. 3

Municipal Airport

Tulsa, Oklahoma

REFRESH

DRINK
Coca-Cola



COCA-COLA BOTTLING COMPANY OF TULSA, TULSA, OKLAHOMA

Live **M**odern, Boy...Smoke **L&M**!

My Chesterfields *Satisfy* the Most!



TULSA

PROBABLE STARTING LINE-UP

No.	Name	Pos.
83	JIM COMBS	LE
70	OPIE BANDY	LT
63	LLOYD DAY	LG
52	MAX BLACK	C
62	ODIS FULLER	RG
71	DEAN SLAYTON	RT
85	BOB KITE	RE
13	GEORGE CAGLIOLA	QB
41	DICK HUGHES	LH
23	RONNIE MORRIS	RH
35	DUWAYNE GANDY	FB

THE SQUAD

10 Jim Pirtle, QB	42 Al Backus, RH	68 Richard Cohea, RG
11 Benny Davis, QB	43 Dave Laird, LH	70 Opie Bandy, LT
12 Jim Hardin, RE	Ray Boaz, LH	71 Dean Slayton, RT
13 George Cagliola, QB	50 Tom Harris, C	72 John O'Neill, LT
14 Charlie Wynes, QB	52 Max Black, C	73 John Cegielski, LT
22 Barney Iles, RH	53 Roger Wickersham, C	74 Bill Verble, LT
23 Ronnie Morris, RH	Earl Kirsch, C	75 Dick Walz, RG
25 Lynn Capps, FB	61 Chuck Yonkers, RG	77 John Rowden, LG
26 Art Balcerzak, RH	62 Odis Fuller, RG	80 Dave Selph, LE
33 Dick Scholtz, FB	63 Lloyd Day, LG	81 Bill Froman, RE
34 Earl Shuck, FB	64 Art Davis, LG	83 Jim Combs, LE
35 Duwayne Gandy, FB	65 Ron Wilt, RT	85 Bob Kite, RE
36 Clyde McLean, FB	66 Lee Brady, LG	87 Dick Brown, RE
41 Dick Hughes, LH	James Jolly, LG	88 Billy Neal, LE

COLLEGE OF THE PACIFIC

PROBABLE STARTING LINE-UP

No.	Name	Pos.
88	FARRELL FUNSTON	LE
78	JOHN NISBY	LT
61	GALEN LAACK	LG
54	JACK O'ROURKE	C
67	BOB LEE	RG
74	BILL STRIEGEL	RT
86	BOB DENTON	RE
15	TOM FLORES	QB
22	DICK BASS	LH
47	TOM PERRY	RH
39	TOM GREEN	FB

THE SQUAD

10 Chuck Filice, QB	45 Chuck Chatfield, RH	72 Adrian Vera, RT
14 Jim Reynosa, QB	47 Tom Perry, RH	73 Joe Nichols, LT
15 Tom Flores, QB	54 Jack O'Rourke, C	74 Bill Striegel, RT
16 Del Whittier, QB	55 Roland Rutter, C	77 Frank Montabana, RT
20 Bob Hicks, LH	56 Mich Yamamoto, C	78 John Nisby, LT
22 Dick Bass, LH	60 John Williams, LG	79 Jim Ingram, LT
24 Roger Metoyer, LH	61 Galen Laack, LG	80 Lee Allerdice, LE
30 Bob Coronado, LH	63 Floyd Weaver, RG	82 Matt Russell, RE
32 Ken Uselton, FB	65 Art Mesistrano, LG	83 George Lane, LE
33 Don Bossert, FB	66 Ben Parks, RG	84 Ken Cornell, RE
39 Tom Green, FB	67 Bob Lee, RG	85 Pete Wallace, LE
41 Jack Larscheid, RH	68 Tony Ortega, LG	86 Bob Denton, RE
42 Joe Golenor, RH	70 Bob Sartwell, LT	88 Farrell Funston, LE
43 Dutch Grose, RH		

PAUSE ★ ★ ★



LOSS OF FIVE YARDS

- 1—Taking more than five times out during either half (except for replacement of injured player).
- 2—Illegal delay of game.
- 3—Failure to complete substitution before play starts.
- 4—Violation of kickoff formation.
- 5—Player out of bounds when scrimmage begins.
- 6—Putting ball in play before Referee signals "Ready-for-play".
- 7—Failure to maintain proper alignment of offensive team when ball is snapped. Also, backfield man illegally in motion.
- 8—Offside by either team or encroachment on neutral zone.
- 9—Attempt to draw opponents offside.
- 10—Crawling by runner.
- 11—Illegal forward pass (includes intentional grounding of forward pass). Also loss of down.
- 12—Taking more than two steps after Fair Catch is made.
- 13—Player on line receiving snap.
- 14—Any violation of the scrimmage formation.

LOSS OF FIFTEEN YARDS

- 15—Team not ready to play at scheduled time.
- 16—Violation of rules during intermission.
- 17—Illegal return of suspended player.
- 18—Interference by member of offensive team with defensive player making pass interception. (Also loss of down).
- 19—Interfering with the opportunity of a player of the receiving

PENALTIES

- team to catch a kick.
- 20—Illegal use of hands or arms by offensive player.
- 21—Tackling or blocking defensive player who has made fair catch.
- 22—Roughing the kicker.
- 23—Piling up, hurdling, clipping.
- 24—Tackling player out of bounds, or running into player obviously out of play.
- 25—Coaching from sidelines.
- 26—Failure to stop one full second following shift.
- 27—Defensive holding.
- 28—Invalid Signal for Fair Catch.

OTHER PENALTIES

- 29—Striking an opponent with fist, forearm, elbow or locked hands, kicking or kneeling — Mandatory disqualification of offending player plus loss of fifteen yards.
- 30—Foul within the one yard line — half the distance to the goal.
- 31—Interference by defensive team on forward pass — passing team's ball at spot of foul.
- 32—Forward pass being touched by ineligible receiver beyond the line of scrimmage—loss of fifteen yards from spot of preceding down and loss of a down.
- 33—Illegal touching of kicked ball within opponent's ten yard line — touchback.
- 34—Flagrantly rough play or unsportsmanlike conduct — Mandatory disqualification plus loss of fifteen yards.
- 35—Eligible pass receiver who goes out of bounds and later touches a forward pass — loss of down.

DRINK

Coca-Cola

REG. U.S. PAT. OFF.

COPYRIGHT 1956, THE COCA-COLA COMPANY

COCA-COLA BOTTLING COMPANY OF TULSA, TULSA, OKLAHOMA

COLLEGE OF THE PACIFIC FOOTBALL ROSTER

No.	Name	Pos.	Age	Ht.	Wgt.	Class	Home
10—	Chuck Filice	QB	20	5-9	165	Junior	Santa Cruz
14—	Jim Reynosa*	QB	20	5-9	170	Senior	Stockton
15—	Tom Flores	QB	19	6-1	185	Junior	Sanger
16—	Del Whittier	QB	21	6-0	185	Junior	Oroville
20—	Bob Hicks	LH	20	5-11	180	Junior	Janesville
22—	Dick Bass	LH	19	5-10	185	Soph	Vallejo
24—	Roger Metoyer	LH	20	5-11	178	Junior	Hawthorne
30—	Bob Coronado	LH	19	6-2	180	Soph	Vallejo
32—	Ken Uselton	FB	20	5-11	195	Junior	Cloverdale
33—	Don Bossert	FB	21	5-11	185	Senior	Lodi
39—	Tom Green	FB	21	5-11	190	Junior	Long Beach
41—	Jack Larscheid	RH	22	5-6	154	Junior	Pleasant Hills
42—	Joe Golenor	RH	20	6-0	185	Junior	French Gulch
43—	Dutch Grose	RH	26	5-10	195	Senior	Lake Worth, Fla.
45—	Chuck Chatfield	RH	19	5-11	185	Junior	Sacramento
47—	Tom Perry	RH	22	6-1	186	Senior	Oakdale
54—	Jack O'Rourke**	C	20	6-1	207	Senior	Burbank
55—	Roland Rutter	C	25	6-2	210	Junior	Hawthorne
56—	Mich Yamamoto	C	20	6-0	202	Junior	Torrance
60—	John Williams	LG	23	5-8	195	Soph	Chowchilla
61—	Galen Laack**	LG	25	6-0	221	Senior	Abbotsford, Wis.
63—	Floyd Weaver	RG	22	5-11	210	Junior	Stockton
65—	Art Mesistrano	LG	19	5-11	240	Soph	Brooklyn, N. Y.
66—	Ben Parks	RG	22	5-8	190	Senior	Hollister
67—	Bob Lee	RG	20	5-11	205	Senior	Concord
68—	Tony Ortega	LG	21	5-10	185	Senior	Stockton
70—	Bob Sartwell	LT	19	6-0	205	Soph	Salinas
72—	Adrian Vera	RT	18	5-10	215	Soph	Stockton
73—	Joe Nichols	LT	19	6-0	235	Soph	Woodland
74—	Bill Striegel*	RT	19	6-2	222	Junior	Chico
77—	Frank Montabana**	RT	21	6-0	213	Senior	San Francisco
78—	John Nisby**	LT	18	5-10	215	Soph	Stockton
79—	Jim Ingram	LT	20	6-2	240	Soph	San Rafael
80—	Lee Allerdice	LE	24	5-9	180	Soph	Snohomish, Wash.
82—	Matt Russell	RE	23	6-3	215	Soph	San Francisco
83—	George Lane	LE	22	6-3	220	Junior	Los Banos
84—	Ken Cornell	RE	20	6-0	190	Senior	Inglewood
85—	Pete Wallace	LE	23	6-0	185	Soph	Pasadena
86—	Bob Denton	RE	21	6-4	224	Soph	Stockton
88—	Farrell Funston*	LE	20	6-1	212	Junior	Dixon

* Number of letters won



**OVER
FORTY-TWO YEARS
OF DISTINCTIVE
SERVICE TO TULSANS**

Watch For Guaranty's Offensive — Defensive Player Trophy Winners

2032-44 East 11th Street

Phone MA 6-1124

BUSINESS EMPLOYMENT SERVICE

EXECUTIVE — TECHNICAL — OFFICE — SALES

Our Service Will Definitely Save You Time
And There's No Charge To Employer

PHONE LU 4-7273

Room 511 McFarlin Bldg.

D. A. (BILL) WILLIAMS, Owner



Services for the Oil Industry
DOWELL INCORPORATED
Tulsa 1, Oklahoma
Subsidiary of
The Dow Chemical Company

BROOKSIDE BOWL
Relax Here After The Game
OPEN DAILY
STUDENT RATES
4734 S. Peoria RI 7-0207

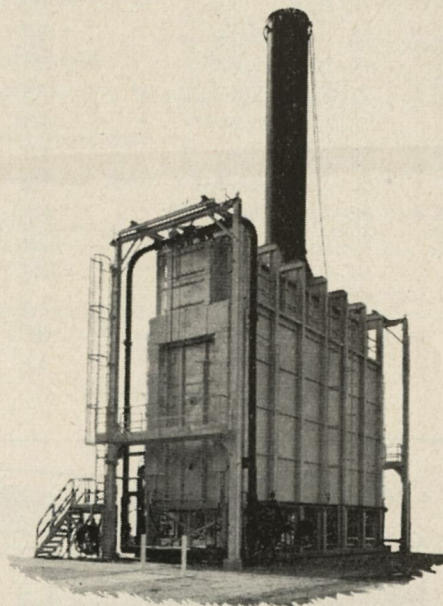
GO
**HURRICANE
CREWS
LUMBER CO.**
815 East 1st Pl.
LU 2-5225

Wearing Apparel for Discriminating MEN and WOMEN . . .

Woolf Brothers
Fifth at Main

Compliments of
**WONDER BREAD
and
HOSTESS CAKES**

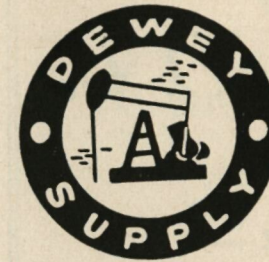
Over One Million Barrels of
Oil are Processed Every Day
in BORN Heaters!



BORN Engineering Company
Manufacturers of Direct-Fired **"UPFLO"** Heaters
TULSA, OKLAHOMA

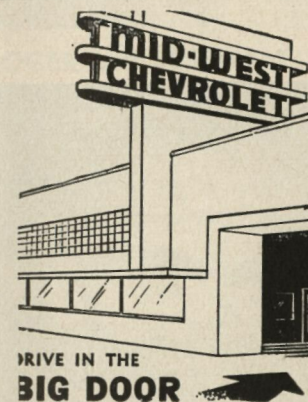
Stores—

Ada
Dewey
Okemah
Chickasha



Sales Offices—

Tulsa
General Office
Bartlesville
Oklahoma City



**MID-WEST
CHEVROLET**

7th to 8th
on
Cincinnati

DRIVE IN THE
BIG DOOR

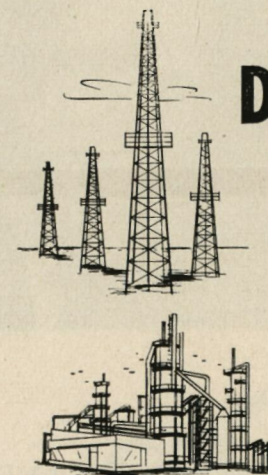
TULSA'S CHEVROLET
HEADQUARTERS FOR OVER
33 YEARS

For Chevrolet Cars, Trucks,
Parts and Service
Drive in the Big Door.



JIM CARMICHAEL —

Halfback . . . "Hoagy" is a 25 year old Navy veteran . . . hails from Crescent, Oklahoma . . . 6 feet . . . 180 pounds he played football with the Navy while in the South Pacific and won distinction as All-Pacific back in 1953 . . . The "old man" of the squad . . . Hoagy still steps fast enough to keep the "youngsters" panting. Hoagy is a sophomore.



**DEEP ROCK
GASOLINE
AND
MOTOR
OIL**

produced . . . refined . . . and marketed by

KERR-McGEE

KERMAC
ASPHALT

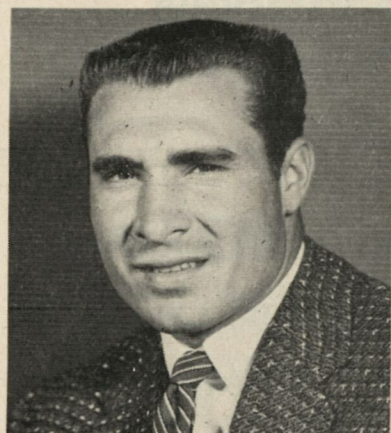
Also makers of
DEEP ROCK
Absorption Oils

KERMAC
PIPE WRAP

DEEP ROCK DIVISION
KERR-McGEE OIL INDUSTRIES, INC.
306 NORTH ROBINSON RE 9-0611
OKLAHOMA CITY



Congratulations To T. U.



RAY BOAZ —

Smallest man on either the "A" or "B" teams, Boaz rightfully belongs. He has both good speed and movement. He's 5'9", 155-pounds, 20-years old and a sophomore from Altus. Ray will definitely be an able replacement at left half.

JAMES JOLLY —

Sophomore Jolly comes to TU from McLean, Texas, where he played good enough to be all-District three years, all-Regional one year and all-State one year.

He's 19-years old, 6'1", 190-pounds and a good student. He was a member of his prep student council, vice-president of one class and president of another.



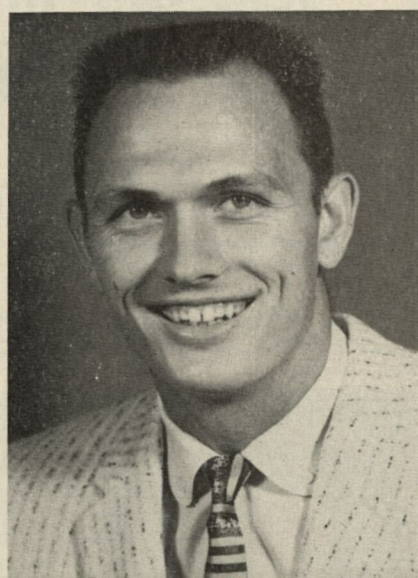
ATLAS LIFE INSURANCE COMPANY

LIFE • ACCIDENT AND HEALTH • GROUP

Home Office: Tulsa

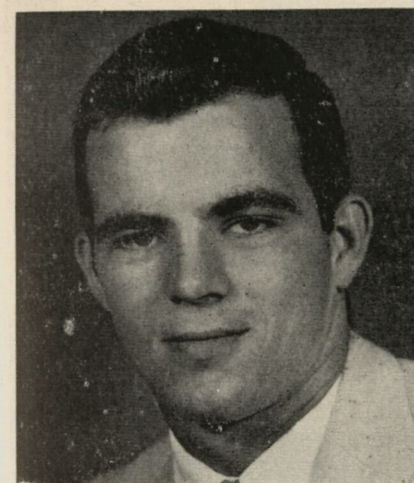
GARY GORE —

Left Guard . . . Coming in as a junior from Bakersfield, Calif. . . . Gore is 5'10" . . . 195-pounds and 22-years old . . . He has been in the service and the coaching staff is hoping that he will be able to fill the bill.



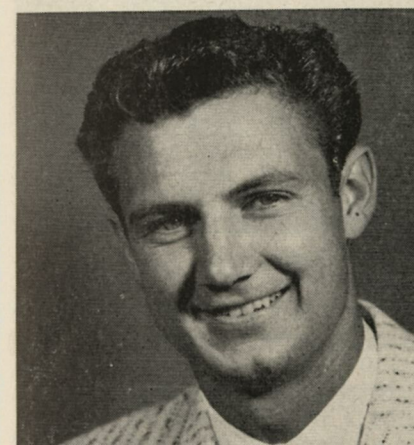
RONNIE MORRIS —

Right Halfback . . . Morris is the second sophomore listed on the "A" team . . . For the past two seasons, the Hurricane has been forced to start an imposing number of sophs . . . but Coach Dobbs has remedied this situation somewhat and accordingly . . . cut the odds which inexperience piles up . . . Morris is a 6'1" . . . 185-pound . . . 20-year old Tulsan who started spring practice as a fullback . . . He runs low to the ground with his knees high and he runs as hard as any coach would want.



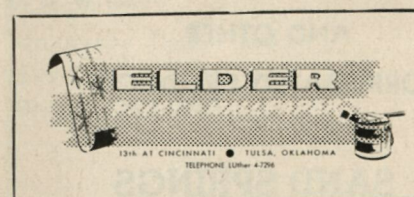
ROGER WICKERSHAM —

Center . . . an even six in altitude a ferocious 195 pounds in attitude . . . Eighteen . . . Roger is a sophomore and comes from nearby Sand Springs.



LYNN CAPPS —

Right Halfback . . . is 5'10" 185-pounds . . . 23-years old and a soph from McKinney, Texas . . . His military service is behind him . . . he played service football Lynn is another speed merchant who was all-District in high school . . . in baseball and football.



ORBIT VALVE Says

Our Best to . . . Blue and Gold!

CHUCK YONKERS —

Possible All-American
22 year old senior letterman.
Chuck likes it rough . . .
hits hard . . . goes to
either side very well . . .
played tackle in 1955, will see
action as guard this season.
He was on first team all-MVC
last year, figured to repeat this year.
Yonkers is a Physical Education major.



BILLY NEAL —

Neal is a 6'1", 185-pound, 19-year old soph from Duncan who scored 12-hours of "A" while carrying 17-semester hours this past spring as a pre-med student. In high school, he was all-Conference, all-Southern, all-State and honorable mention all-American as a grid star. Plays Left End.



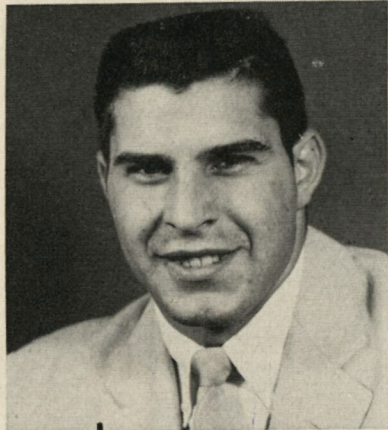
ORBIT VALVE COMPANY

POST OFFICE BOX 699

TULSA 1, OKLAHOMA

CONTINENTAL CAN says

"GO HURRICANE"



GEORGE CAGLIOLA —

George is another football-basketball star. As quarterback is fast and smart . . . needs experience since only a sophomore. Cagliola is 5'10", 175 pounds, 20 years old and hails from Norristown, Pa.

Serving Industry . . .

Serving America

CONTINENTAL

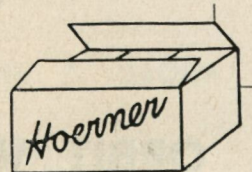


CAN COMPANY

**We're
4U-TU**

CONGRATULATIONS!

HOERNER BOXES, INC.

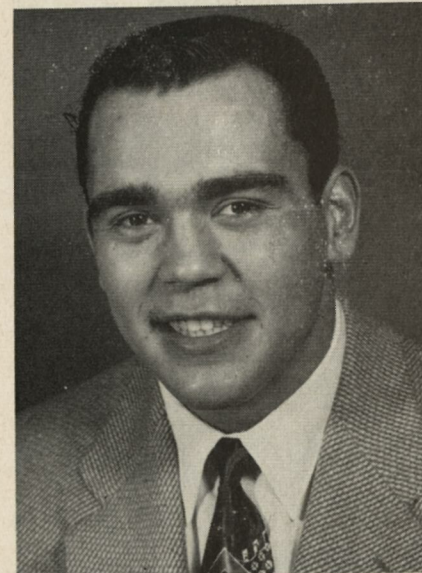


MANUFACTURERS OF
CORRUGATED
SHIPPING CONTAINERS
AND OTHER
CORRUGATED PRODUCTS

SAND SPRINGS

JIM COMBS —

Right Halfback . . . came to TU via Lawton where he starred in baseball and track as well as football . . . He's a 6'1" . . . 185-pounds . . . 19-year old junior aeronautical engineering student . . . Jim is very fast and runs hard . . . It is conceivable that he could move up to the "A" team.



JOHN CEGIELSKI —

Left Tackle . . . At 220-pounds John is another of the TU big men . . . He's a senior letterman handicapped by a lack of speed . . . Cegielski (See-gal-ski) is 6'2" 21-years old and from Chicago, Ill. . . . He has seen considerable action and should see quite a bit more during his last season.



TULSA UNIVERSITY HOME BASKET-BALL 1956-1957 SCHEDULE

Dec. 3—Mississippi Southern	Mon. 8 p.m.
Dec. 6—Arkansas	Thur. 8 p.m.
Dec. 12—Texas Western	Wed. 8 p.m.
Dec. 15—Iowa State	Sat. 8 p.m.
♦ Dec. 20—Detroit	Thur. 8 p.m.
Dec. 22—Idaho State	Sat. 8 p.m.
Dec. 29—Oregon	Sat. 8 p.m.
♦ Jan. 12—Bradley	Sat. 8 p.m.
Jan. 30—Santa Barbara	Wed. 8 p.m.
♦ Feb. 1—Houston	Fri. 8 p.m.
♦ Feb. 9—Wichita	Sat. 8 p.m.
♦ Feb. 25—Okla. A. & M.	Mon. 8 p.m.
♦ Feb. 28—St. Louis	Thur. 8 p.m.
♦ Mar. 2—Drake	Sat. 8 p.m.

♦ Denotes Conference Games

FOR TICKET INFORMATION:

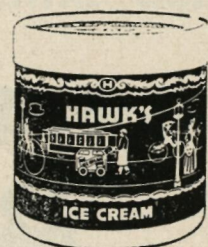
Call or Write—

University Ticket Office
512 So. Cincinnati
Phone: CH 2-0981





YOUR FAVORITES FOR OVER 40 YEARS!

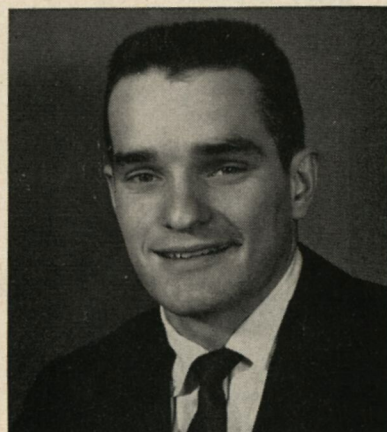


HAWK'S HOME TOWN ICE CREAM
HAWK'S HOME TOWN MILK
HAWK'S HOME TOWN
CREAMED COTTAGE CHEESE



JAYNES CARPET SHOP says

"GO HURRICANE"



CHARLIE WYNES —

5'11" . . . 170-pound Senior
. . . 21-years old . . .
Will share quarterback chores
for Hurricane this fall . . .
Won varsity football and
basketball letters last season
. . . All-State in football
and basketball at El Reno . . .
Handles team well . . .
Majoring in Business
Administration.

JAYNES CARPET

Quality Rugs & Carpets

Expert Installation & Cleaning

3136 East 15th

Phone WE 9-6349

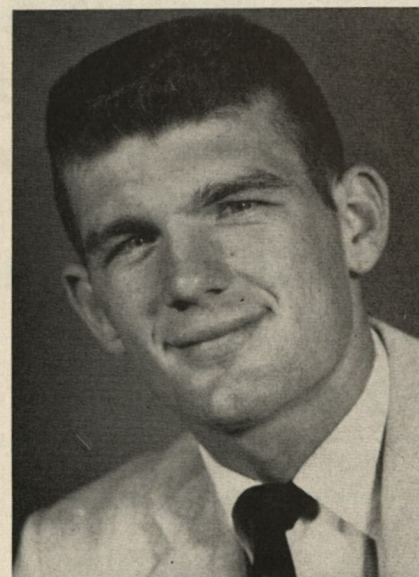
Westemeir and Son

PRINTERS AND LITHOGRAPHERS

Phone Diamond 3-0904 317 E. 5th St.

We're Behind The
Hurricane
KENLAND
OIL COMPANY

823 S. Detroit Tulsa, Okla.



JIM PIRTLE —

Quarterback . . . is a junior
but carries a senior amount
of authority with a football . . .
Nineteen . . . Jim is an Ada boy
. . . who's five ten in height
170 in weight . . .

MURPHY SAFETY SWITCHES

AUTOMATIC CONTROLS FOR

ENGINES • PUMPS • COMPRESSORS
OIL FIELD - IRRIGATION - CONSTRUCTION

FRANK W. MURPHY MFR., INC.

BOX 1476

TULSA

TE 8-3386

For Business

For Pleasure

Daily Schedules
or Charters



A Good Name in Transportation

Go
MK&O
TRAILWAYS

Stubby's Concessions, Inc.

Welcomes football fans for refreshments before,
during, and after the game!

Sixteen Stands for Your Convenience!

Hot Dogs 25c

Pop Corn — Peanuts
Large Bags
10c & 15c

Candy—Gum 10c

Agents will also be distrib-
uting most of these items
through the stands.

TO BETTER SERVE YOU

a new concession stand has
been added under the center
of the North Stand!

Popular Brand

Cigarettes 30c

Cigar 15c

Coffee 10c

Cold Drinks 10c

7 Stands on West
6 Stands on East
3 on North End.

FOR FASTER SERVICE . . . USE OUR SELF-SERVICE STANDS

PLEASE HAVE MONEY READY

THANKS!

Light up a Lucky—
it's light-up time!



Luckies
Taste Better
Cleaner, Fresher, Smoother!



**"IT'S
 TOASTED"**
 to taste
 better!

©A. T. Co. PRODUCT OF *The American Tobacco Company* AMERICA'S LEADING MANUFACTURER OF CIGARETTES

OF COURSE...

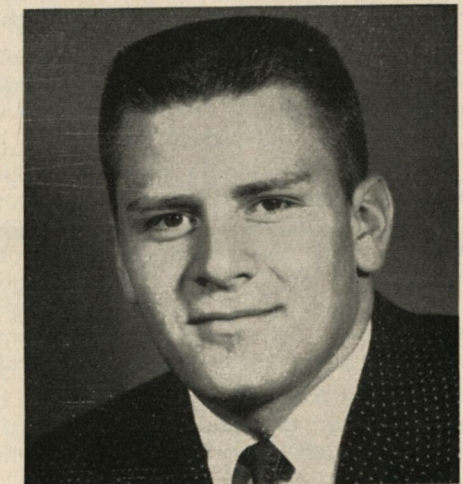
Tulsa's Friendly
FOURTH NATIONAL BANK
 member fdic

GO FOURTH...



DAVID LAIRD —

Left Halfback . . . Not satisfied with just all-Conference ranking, Dave was voted the best back in his league. He is a sophomore at TU . . . at 5'9" 155-pounds and 19-years old . . . from Tipton . . . He has also played baseball . . . basketball and ran in track which is an indication of his good speed and deception.



TOM HARRIS —

Center . . . a sophomore . . . from Cushing . . . stands five eleven and an even 200 on the scales . . . Nineteen Tom is packed solid and delivers the same way.



HOPE LUMBER & SUPPLY COMPANY

TULSA - MUSKOGEE - PORTER - PRYOR

2802 E. 11th Street

415 E. 13th Street

MOVING SOON TO 13th & SHERIDAN ROAD

As I See It . . .

By Bill George
RADIO STATION KOME

College of the Pacific will be the finest team Tulsa will face this year. The "number one" independent on the West Coast comes to Skelly Stadium today with only a tie with Kansas to mar an otherwise perfect record through six games this fall.

Pacific is a big, rugged team that will average 217 pounds in the line, and 185 pounds in the backfield. It's size and speed have been the major factors in their successful wins over Colorado A & M, Cincinnati, Fresno State, Marquette, and Washington State.

COP has the look of a "professional" eleven and it's offensive play today will show many of the offensive patterns of the "pros." Head Coach Jack "Moose" Myers, a UCLA star, and an outstanding performer with the Los Angeles Rams and Philadelphia Eagles, is a firm believer in the "wide-open" brand of ball that COP plays. Myers is one of the youngest head coaches and Athletic Directors in the country at 31 and his entire staff averages but 29 years of age.

This year's edition of the Tigers has but eight lettermen but the team was materially strengthened by the addition of 16 non-lettermen veterans, 16 junior college transfers, two service returnees, and five stand-out performers from last year's frosh including the sensational Dick Bass. As small as the team was in number at the beginning of the season some observers close to the Pacific scene picked the Pac-Cats to win all their games while the less optimistic critics looked for seven or eight wins. As their present record indicates, the Tigers are running true to form.

Dick Bass, highly touted and well-publicized before the season began, has run well ahead of his press-clippings. Bass is a sophomore speedster who runs the 100 yard dash in :09:8 and packs terrific power on his 185 pound frame. In his last two years in high school and his freshman year at COP, Bass averaged a phenomenal 13.5 yards per carry. So far this year Dick has averaged over 100 yards per game and number 22 will be the man to watch. Bass has been slightly injured during the past two games but is expected to be in top shape for today's game.

Junior Quarterback Tom Flores pushed two COP veterans out of the number one calling job by his steady play and has been an offensive star, hitting on 58% of his passes, including 6 tosses for touchdowns. Another man to watch today is Jack Larscheid, the smallest man on the COP squad at 5-6 but one of the "quick" runners that adds deception to the Tiger attack.

The Tigers line is led by giant Left Tackle John Nisby whose 230 pounds of defensive and offensive play has gained for him the reputation as the best lineman ever to play for Pacific. Last year he was the only non-Big 10 player chosen on Purdue's All-Opponent team. Two other COP linemen who will give the Hurricane a busy afternoon are Senior Left Guard Galen Laack and Junior Left End Farrell Funston, who weigh 220 and 210 respectively, giving the left side of the Tiger line an average of 220 pounds. Highly regarded by everyone is right end Bob Denton a big Sophomore at 6-4 and 224 pounds. Denton is the team's punter and has averaged 41 yards per punt this year. He also has been on the receiving end of three touchdown passes.

College of the Pacific is "one" of the better teams in the country and the Pac-Cats will definitely be the best team Tulsa will face this year. They have size, power, speed, experience, and depth. Jack Myers has molded his team into a powerhouse that will give Tulsa its strongest test of the season.

As a note of interest concerning the school itself, College of the Pacific is the oldest school in California, dating back to 1851. It's co-ed student body however is the smallest for a major college football power, numbering only 1200.

COP and Tulsa will meet again next year at Stockton.

PIZZA

VILLA CONTI RESTAURANT

3014 South Harvard

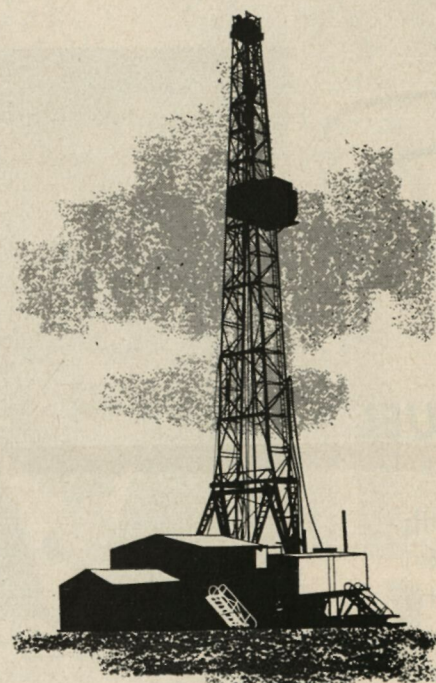
Drop by after the game or anytime
Open Daily 'til 11 p.m.

TAKE HOME SERVICE

Phones RI 2-9074 - RI 2-0608

BEST WISHES FOR A SUCCESSFUL FOOTBALL SEASON

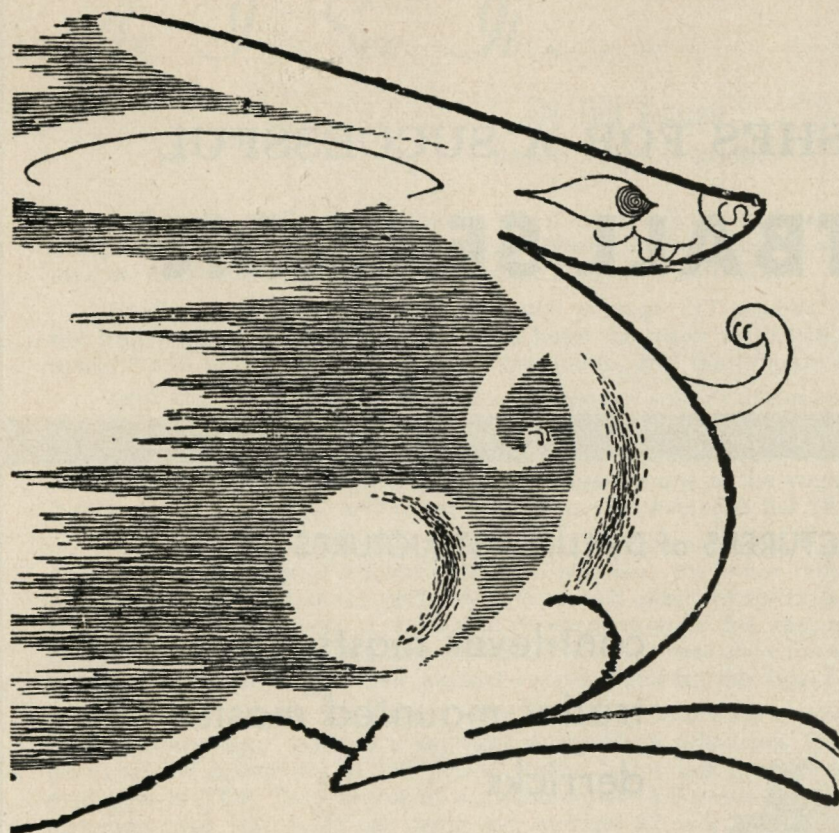
MANUFACTURERS of DRILLING STRUCTURES



cantilever masts
trailer mounted masts
derricks
substructures
safety platforms
stairways
ramps
piperacks
engine foundations
steel floor gratings

LEE C.
More
CORPORATION

TULSA : SHREVEPORT : GREAT BEND : CASPER : NEW ORLEANS
CENTRALIA : DALLAS : HOUSTON : MIDLAND : PITTSBURGH
EXPORT OFFICE:—ROOM 624, INTERNATIONAL BLDG., 630 5TH
AVE., NEW YORK 20, NEW YORK
FOREIGN LICENSED MFR.: OIL WELL ENGINEERING CO., LTD.,
CHEADLE HEATH, STOCKPORT, ENGLAND



Fast . . .

THAT'S GAS THE IDEAL FUEL

More leisure time is yours every day — with GAS, the fast fuel. GAS, the sure-fire labor-saver, cuts housekeeping time to the minimum. At the flick of your finger, GAS goes to work for you. Right from the start it's hot, hot, hot . . . doing a fast, fast job without tedious "warm-ups" or left-over heat. Dependable, economical, clean . . . GAS, is in all ways, the ideal fuel for modern living.

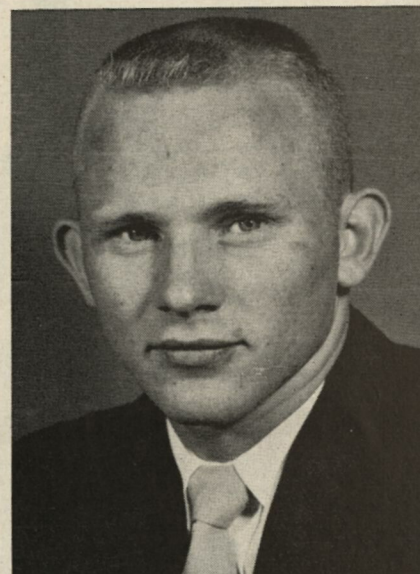
Our 50th Year of Service

1906 - 1956

OKLAHOMA NATURAL
Gas Company

BOB WINOVICH —

Tackle . . . One of the three boys on the squad who are from Pennsylvania . . . Bob is in his sophomore year and has already proved himself a rugged competitor. Six foot two . . . Bob weighs 215 pounds.



CLYDE McLEAN —

Right Halfback . . . Selected as the Most Valuable of his all-District team in high school McLean is 5'10" . . . 170-pounds 19-years old and a junior from Brady, Texas . . . He's right in the thick of the fight for a better ranking and may move up the ladder.

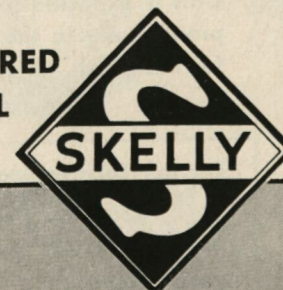
SEALS PUNCTURES PERMANENTLY— EVEN WHEN NAIL IS REMOVED!



Safety-Seal
"400"

**OUTSTANDING
TRIPLE-THREAT
PERFORMANCE**

FEATURED
AT ALL



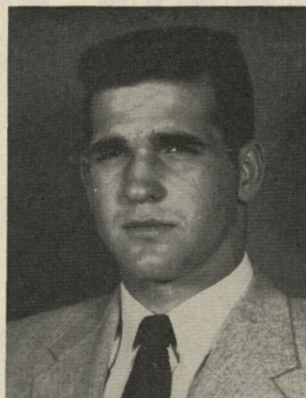
- 1 EXCLUSIVE GUMMY SEALANT**
ALLOWS NO LOSS OF AIR—EVEN WHEN NAIL IS REMOVED
- 2 HEAT TREATED NYLON**
DOUBLES RESISTANCE TO IMPACT BRUISES
- 3 PATENTED BLOWOUT SHIELD**
ELIMINATES BRUISE BLOWOUTS

STATIONS

WE'RE 4U TU "GO HURRICANE"

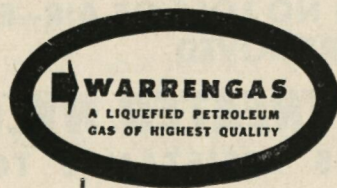
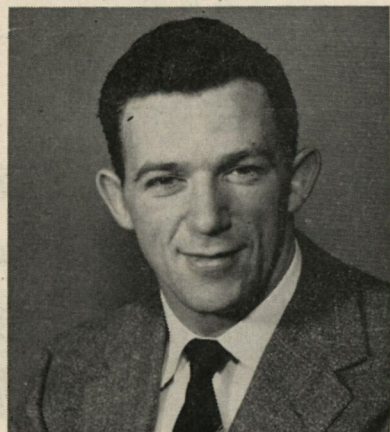
LLOYD DAY —

A center from Oklahoma City's Southwest High School where he lettered four years in football. He's 5'11", 190-pounds and a 20-year old junior going into his second season on the varsity. He lettered as a sophomore and did a fine job beside Max Black and is one of three juniors holding down Tulsa's left side of the "A" team line.



DICK HUGHES —

A Tulsan by way of Buffalo, N. Y. . . . Ex-GI . . . 25-years old . . . 5'9" . . . 175-pounds Senior . . . Won prep letters in football, baseball and ice hockey . . . Brother of former TU fullback Ed Hughes . . . Throws running pass well and has good speed . . . two football letters . . . Marketing major . . .



Warren Petroleum Corporation

Tulsa, Oklahoma

EARL KIRSCH —

Center . . . Another sophomore fighting for recognition Earl is a 5'10" . . . 190-pound . . . 20-year old center from Pittsburgh, Pa. . . . He fought hard for this second team listing during spring drills and will probably work just as hard to keep it. He should see considerable action since Coach Dobbs would like to be able to give Max a little more relief than he had in 1955 . . . Coach Bobby says that Earl is the most improved player on the squad this year.



ODIS FULLER —

Right Guard . . . Fuller was all-District at Temple, Texas . . . in both basketball and football He's 19-years old . . . 5'11" 200-pounds and a soph . . . Odis is expected to figure prominently in the fight for this berth.

For the Tops in Food after the Game, try that Popular
Pennington's Drive-In

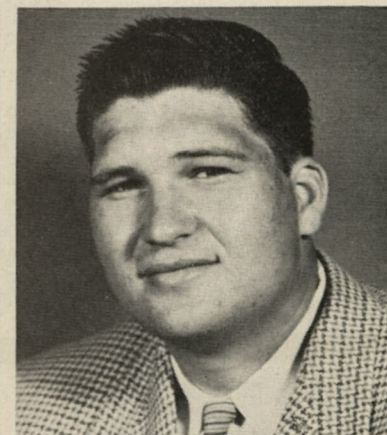
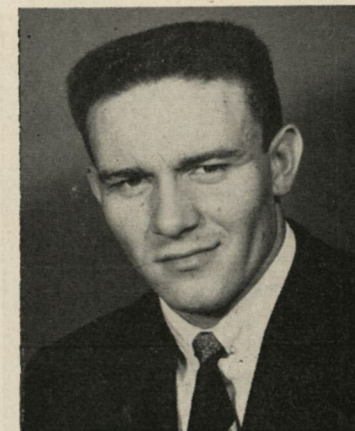
4235 S. Peoria RI 2-0483
3319 E. Admiral Pl. MA 6-0127

MEADOW GOLD MILK Says

Take 'em T. U!

AL BACKUS —

Senior halfback from Ada . . . 22-years old . . . Won 11 prep letters in football, basketball, baseball and track . . . Member of the two Class A state championship football teams . . . Played in Senior Oil Bowl game . . . Scored 22 touchdowns his senior year . . . Good steady, ballplayer . . . Gets job done . . . Geology major.



BOBBY SAMS —

Biggest man on the entire roster, Sams is 19-years old, 6'2", 235-pounds and a soph from Jenks. He was all-Conference for two years and all-State one. . . . can move well from having played baseball and basketball as well as football.



MEADOW GOLD HI-VITA-MIN MILK
BEATRICE FOODS CO.

DAVE SELPH —

Fullback . . . 19 . . . is from Heavener, Oklahoma. This six-foot sophomore is a solid 190 pounds and a man that takes some stopping once he's started.

JOE WEST CO.

Ford Bell -- Bob McMasters

JOHNSTON

Manufacturing Company

1083 North Owasso

Compliments of

TULSA LUMBER CO.
in Brookside

RI-2-6091 4112 S. Peoria
ERNEST C. MILLER

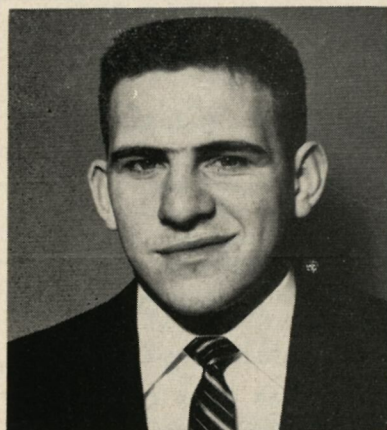
GOOD FOOD
FRIENDLY SERVICE



112 East 18th
Phone DI 3-4205

Goal! After Goal!

Go T. U.

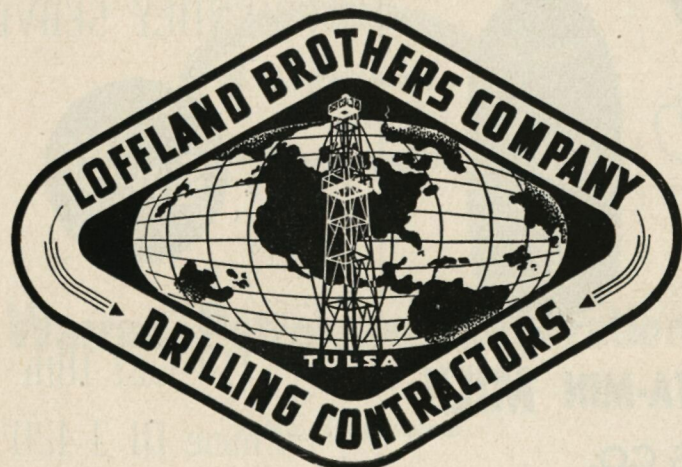
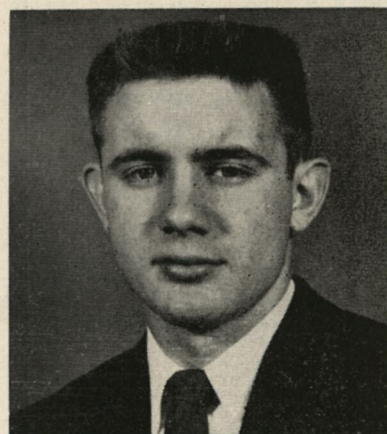


FULLBACK DICK SCHOLTZ —

Scholtz was Tulsa's leading scorer last year with five tds and one conversion for 31-points. He also led the Hurricane punters with a 36.9-average. He's a two-year letterwinner who has worked as both a halfback and a fullback. Dick is 6'0", 195-pounds and a 21-year old senior.

RIGHT TACKLE DICK WALZ —

Dick is the "brain of the ball club" having maintained a high B-average through three years of aeronautical engineering. He's twice been named to the scholastic all-American team as an end, but will be working his senior year as a tackle. Dick is 6'2", 205-pounds and a 21-year old two-time letter winner from Peoria, Ill.



THE E-W CLEANERS

Complete
Modern
CLEANING
SERVICE

Ladies' Garments
a Specialty

Call Us Monday
PROMPT
COURTEOUS

"We Pick Up
and Deliver"

2348 E. Okla. Pl.

Telephone
Gibson 7-9249

K & S GARAGE

Complete Auto Service

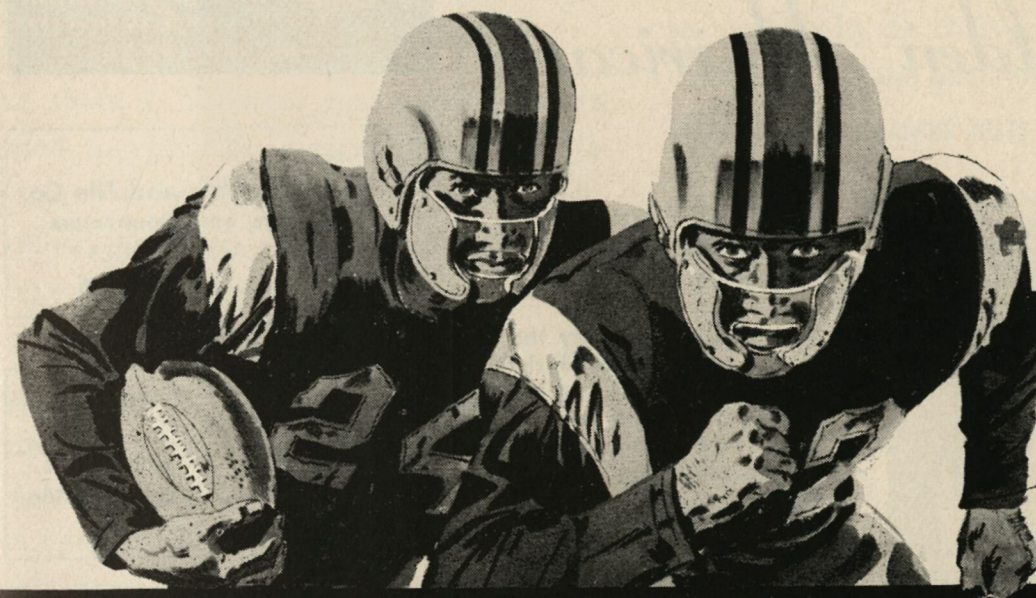
1407 E. 11th LU 4-4131

30 Years Same Location

For Fine Food Try
THE ADAMS HOTEL
Tonight

Reservations LU 4-6121

UNDER THE WINGS OF THE FLYING



TOP PERFORMANCE

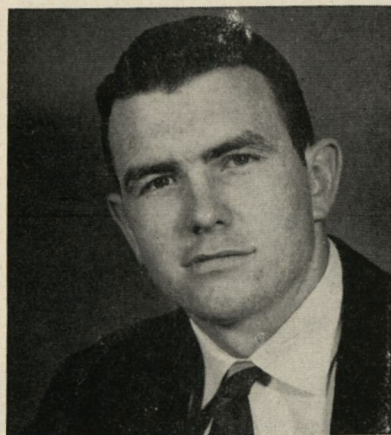


Tops in driving power! You'll see lots more action from your car with "Flying A" Ethyl Gasoline and Veedol 10-30 Motor Oil on your team. The quick-starting, high octane power in "Flying A" Ethyl sends you spinning through traffic, up the steepest hills with power to spare. And Veedol 10-30 cuts down the power penalty from octane-robbing carbon deposits . . . limbers up your engine at any temperature . . . keeps it clean, powerful and economical. For **highest octane performance**, team up with this power pair. Drive all the way with the "Flying A".

TIDEWATER OIL COMPANY

TULSA • HOUSTON • SAN FRANCISCO • NEW YORK

Vote for and win with THE *Golden Hurricane*

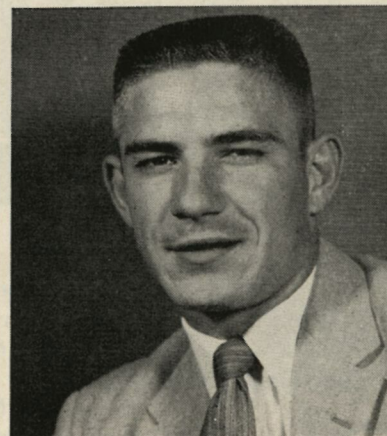


DEAN SLAYTON —

Slayton adds not only the size to his position which it seems to demand, but he has topped it off with know-how. Dean is 6'3, 220-pounds, 19-years old junior from Price, Texas. This will be his first full season with the Hurricane and he did look very well in spring practice. Dean will be the biggest man on the field for Tulsa.

NORMAN ROBERTS —

Roberts is a 6'0", 190-pound, 20-year old junior from Robert Lee, Texas, in his first season as a member of the TU varsity. Norm moved up to the "A" team after the conclusion of spring practice and should be able to hold his starting berth. He is no relation to Tulsa's former fine end, Willie Roberts.



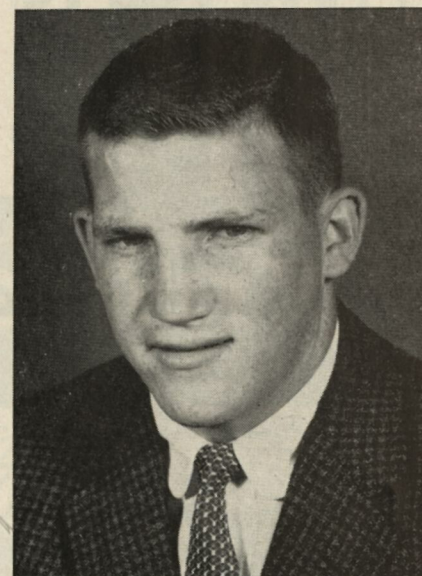
After the game - relax - enjoy yourself -
be our guest for the best on



PHOTO ENGRAVING? call bob brown
CHerry 2-1165
Brown and Hartman
ENGRAVING COMPANY
516 NORTH DENVER • TULSA, OKLA.

Courtesy of . . .
Midwest Marble and Tile Co.
Fabricators and Contractors
PLANT AND OFFICES
TULSA 1, OKLAHOMA

**DeSelms, Boqart
& Hall**
Complete Insurance Facilities
423 National Bank of Tulsa Bldg.
Glbson 7-5188



DICK BROWN—

End . . . tops six by two inches
weighs 195 . . . From Wagoner
this nineteen year old sophomore
can move with alacrity
and audacity.

Your car can turn the pages of history

—and the more you drive, the
less it costs per mile!

Isn't there a historical spot you've always wanted to visit? Your car makes it easy to get there—no matter where it may be. In fact, on most any drive you can find places that bring to life the legends, folklore and famous events from our nation's past.

And while you're reliving thrilling moments of the past, your car helps make it an economical as well as a pleasant trip. Official AAA figures show that a large part of the costs of car ownership do not change with mileage. Whether you drive around the block or cross country, such things as depreciation, license fees and insurance remain about the same.

The relatively small cost of gasoline and oil is the main added expense for extra mileage. However, competition among U. S. oil companies has held down these prices, and you get

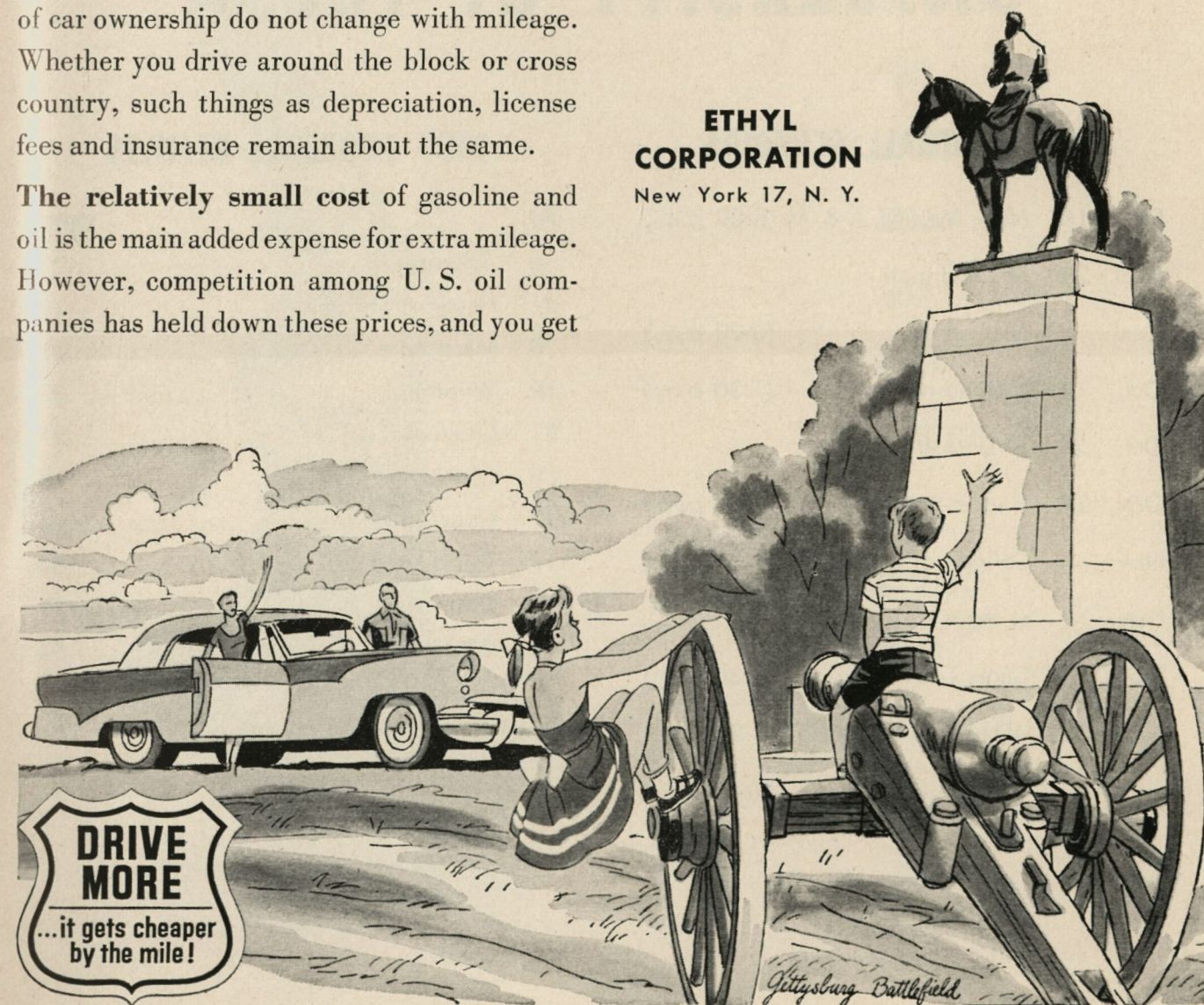
one of today's biggest bargains. So, as you can see quickly by the chart, every mile you drive costs less than the one before.

AVERAGE YEARLY DRIVING COSTS FOR A FAMILY OF FOUR			
For 5,000 Miles*		For 15,000 Miles*	
\$481.33	Depreciation	\$481.33	
104.39	Insurance	104.39	
16.86	License Fees	16.86	
116.00	Gasoline & Oil	348.00	
37.00	Maintenance	111.00	
25.50	Tires	76.50	
\$781.08	TOTAL FAMILY COST	\$1,138.08	
3.9¢	Cost per mile for each member of family	1.9¢	

THIS EXAMPLE IS FIGURED FOR A FAMILY OF FOUR, YOUR FAMILY SIZE MAY CHANGE THIS COST A LITTLE

This fall, take the family and explore the country. And please drive safely. *Source: AAA

**ETHYL
CORPORATION**
New York 17, N. Y.



After the game . . .

. . . . take your party to "the one place in Tulsa that's really fine . . . to meet, and dance, and dine." Whether there are 3 or 30 in your group, you'll have more fun at the

THE MAYO
TULSA'S world-famous HOTEL

*Terrace
Room*

UNIVERSITY OF TULSA

1956 FOOTBALL SCHEDULE

Sept. 15	New Mexico A & M (8:00 p.m.)
Sept. 29	at Cincinnati
Oct. 6	Marquette (8:00 p.m.)
Oct. 13	Oklahoma A & M (1:30 p.m.)
Oct. 20	at Detroit
Oct. 27	Hardin-Simmons (8:00 p.m.)
Nov. 3	College of Pacific (1:30 p.m.)
Nov. 10	at Houston
Nov. 17	Texas Tech (1:30 p.m.)
Nov. 24	Wichita (1:30 p.m.)

1955 FOOTBALL RESULTS

TU	OPP.
6	Arkansas 21
41	Hardin-Simmons 19
0	Marquette 13
19	Wyoming 23
21	Cincinnati 21
0	Oklahoma A & M 14
17	Houston 14
7	Texas Tech 34
13	Detroit 19
0	Wichita 54
124	232
Won 2, Lost 7, Tied 1	

JOHN ZINK

HEAT MAKERS

INDUSTRIAL-COMMERCIAL-DOMESTIC



BUILDING

A

BUILDING

OR

GRIDIRON

THE

OF

MEN

BUILDING

IN

QUALITY

FOR

SUBSTITUTE

ON

THERE'S

LET D-X "CARRY THE BALL"
FOR YOU THIS SEASON



HUNDREDS OF GASOLINES.....

but only one

D-X