



10-27-1956

October 27, 1956 Football Program, UOP vs. Washington State

University of the Pacific

Follow this and additional works at: <https://scholarlycommons.pacific.edu/ua-football>

Recommended Citation

University of the Pacific, "October 27, 1956 Football Program, UOP vs. Washington State" (1956). *Football*. 241.

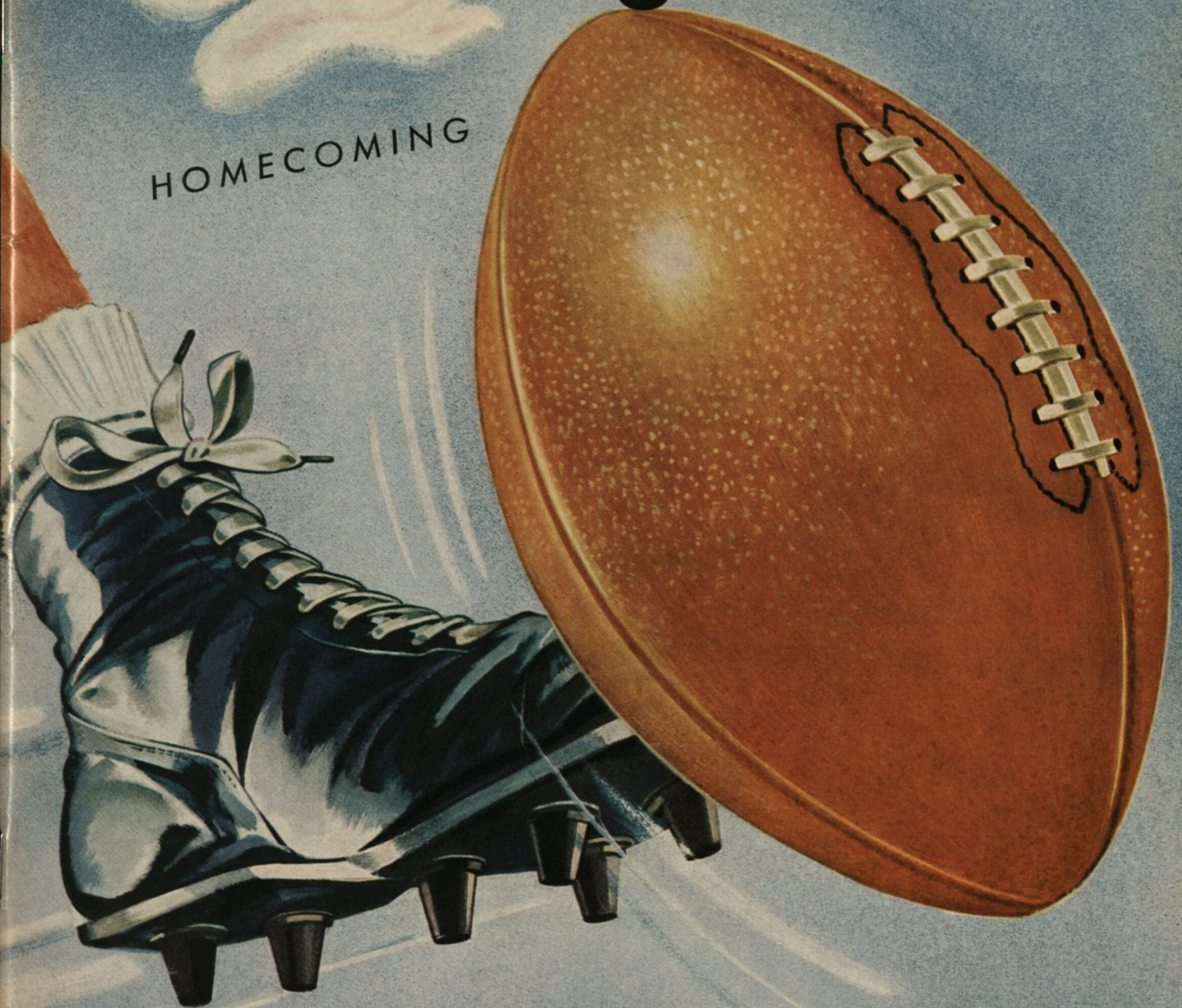
<https://scholarlycommons.pacific.edu/ua-football/241>

This Book is brought to you for free and open access by the Athletics at Scholarly Commons. It has been accepted for inclusion in Football by an authorized administrator of Scholarly Commons. For more information, please contact mgibney@pacific.edu.

Official Program • 25c

College of the Pacific Washington State

HOMECOMING



OCTOBER 27, 1956, PACIFIC MEMORIAL STADIUM

Larry Tisdale

HOTEL STOCKTON

STOCKTON, CALIFORNIA

AIR CONDITIONED THROUGHOUT



BEFORE THE GAME
RENDEZVOUS IN THE

Valley's Famous
Delta and Pioneer Rooms

AFTER THE GAME
ENJOY A HOT SNACK
In the Coffee Shop



Going Somewhere?
... Go By Air
Authorized Airlines Agents
United Air Lines
Western Airlines
American Airlines
Trans World Airways
Telephone HO 6-9096

Charles Travel Service

125 North Hunter Street Stockton 2, California

EXCLUSIVE AGENTS

SMITH - CORONA
OFFICE EQUIPMENT

Featuring

PORTABLE TYPEWRITERS

Sales — Rentals — Service

LLOYD'S BUSINESS MACHINES

35 N. American

HO 4-0340

GOOD LUCK

JOHN KESSEL
RENTAL PROPERTIES

Telephone HO 6-7748

3138 PACIFIC AVE

STOCKTON

PROTECTION — when it counts!



Stephen
F.
Phelan

GENERAL INSURANCE

182 W. Adams

— Phone HO 5-5625

SPORTING GOODS — EVERYTHING FOR YOUR FAVORITE SPORT
HOUSEWARE — PAINT — HARDWARE

TURNER
HARDWARE  **COMPANY**

Modesto — Lodi — Manteca — Oakdale — Tracy — Escalon — Merced
WEBER AVE. AND AMERICAN STS, — STOCKTON

PACIFIC THE VALLEY BOWL

PRESENTS

COLLEGE OF THE PACIFIC

WASHINGTON STATE

(HOMECOMING)

SATURDAY, OCTOBER 27, 1956

Kickoff 8:00 P. M.

PACIFIC MEMORIAL STADIUM

STOCKTON, CALIFORNIA

This official program is edited by the Pacific Athletic News Service, Carroll R. Doty, Director.
Pacific photography by Len Covello and Don Wheeler. Programs may be purchased at each
stadium gate. Printed in Stockton by Atwood Printing Company.

Mingle and Meet With The College Crowd

"ON THE CAMPUS"

The End Zone

The Spot To Relax

SANDWICHES — REFRESHMENTS

At Our Fountain In The

STUDENT UNION BUILDING

C.O.P. CAMPUS

PACIFIC CLAY PRODUCTS

Manufacturers and Distributors of
Vitrified Clay Sewer Pipe and Drain Tile
Flue Lining and Chimney Pipe
Face Brick — Ceramicweld

Los Angeles — Oakland — Stockton — Comanche
Comanche Sand Division

Telephone HO 6-4041

2402 S. CALIFORNIA ST. STOCKTON

ELLIS GARAGE

GENERAL AUTO REPAIRING

Telephone HO 4-4909

2226 N. WILSON WAY

STOCKTON

RAY W. STIRM

GENERAL BRICK MASONRY
FIREPLACES — GLASS BLOCKS
STONE WORK

Telephone HO 3-4418

Room 200 — 47 N. GRANT ST. STOCKTON

Greetings To C.O.P. Tigers
Best of Luck for 1956 Season

KLEIN BROS.

B E A N S

SOL — JACK — BUD

Telephone HO 4-9458

48 W. WEBER STREET

— STOCKTON

THE NEW

PACIFIC COFFEE SHOP

"On the Miracle Mile"

Delicious Meals — Hamburgers
Tamales — Enchiladas

SEE OUR NEW BANQUET ROOM

Plenty of Free Parking

2041 PACIFIC AVENUE

GAINES MARKETS

STOCKTON'S FINEST FOOD STORES
Locally Owned

Store No. 2 — 2244 Sharps Lane

Store No. 3 — 3314 N. Delaware

Store No. 4 — 4115 N. El Dorado

Store No. 5 — 2112 Pacific Avenue

Store No. 6 — 106 Lincoln Center

FINEST QUALITY — LOWEST PRICES

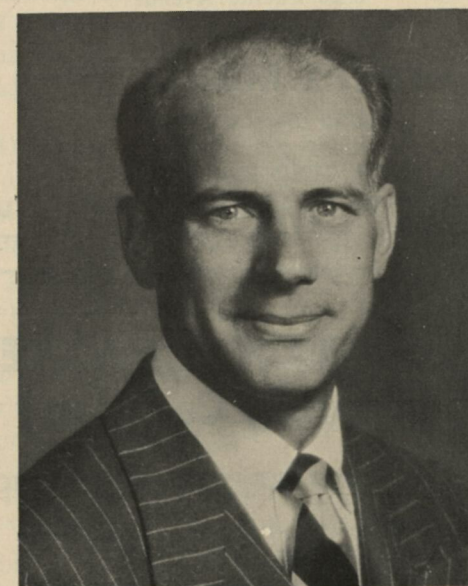
Frank M. Wilson Co., Inc.

NUGGET BRAND
CALIFORNIA
CANNED FRUITS and VEGETABLES

Cherokee Lane and Harding Way
Stockton, California



DR. ROBERT E. BURNS
PRESIDENT



DEAN EDWARD S. BETZ
FACULTY ATHLETIC REPRESENTATIVE



DR. EMERSON COBB
CHAIRMAN, BOARD OF ATHLETIC CONTROL

FOR FACTORY TRAINED TECHNICIANS
Days — Nights — Sundays

DIAL HO 4-7755

CALIFORNIA TELEVISION SERVICE CO.

Serving Stockton Area 20 Years

Bob Moreing and Bill Wiefel, Owners
Member Quarterback Club

929 N. YOSEMITE - - STOCKTON

Insurance — Bonds Real Estate

Geo. H. and Don MARLETTE

808 N. HUNTER STREET
STOCKTON

Office Phone Residence Phone
HO 4-9863 HO 4-3389

AMERICAN AMBULANCE SERVICE

John Ratto, Jr. — Ray Wells

Telephone HO 6-6869

414 E. Miner Avenue Stockton

STANLEY ELECTRIC MOTOR COMPANY

Licensed Contractors

John W. Oneto, Owner

MOTOR REPAIRING
INDUSTRIAL WIRING

Distributors and Service Agency for Delco Motors

Telephone HO 4-4751

1520 E. Miner Avenue - - Stockton

EDDIE'S Coffee Shop

"WE NEVER CLOSE"

EL DORADO AT CHARTER WAY

ELECTRICIANS

Since 1921

ETS-HOKIN & GALVIN

Industrial — CONTRACTING — Marine
Maintenance — Repairs — Supplies

Telephone HO 5-5621

233 N. San Joaquin Street Stockton

AFTER THE GAME
BE SURE TO STOP AT

MIRACLE DRIVE IN

2520 Pacific Avenue

— OR —

HENRY'S ROLLING PIN

2328 Pacific Avenue

FOR FINE FOODS AND
A COMPLETE VARIETY OF DOUGHNUTS

McCORMICK & BAXTER Creosoting Company

PRESSURE TREATED FOREST PRODUCTS

Telephone HO 5-5768

1214 W. Washington Street Stockton



SPEECH DEPARTMENT SERVES THE COMMUNITY

By Arthur Farey

The Speech Arts at Pacific are outstanding—or perhaps "outspoken" is the word. Major students are trained in three different areas: public speaking and speech correction, radio-TV, and theatre.

Department chairman Dr. Howard L. Runion is the director of Pacific's Speech Therapy Clinic, a significant segment of the Pacific program which aids many children and young people handicapped in their social and personality-development by various speech defects. The project also provides experience for teachers, clinicians, and therapists who will work in this remedial field. Dr. Runion has a resident staff of four teachers who handle the public speaking, speech correction and forensic program.

Theatre at Pacific needs little introduction to Central Valley people—except the recent comers. For 32 seasons, De Marcus Brown's students of theatre arts have provided the top drama fare for play-goers in the area. Here's a date to check on your calendar right now

—Friday, October 12—it's Columbus Day—and the way to celebrate is to be a first nighter at the opening of Pacific Theatre's 33rd season in Stockton; curtain at 8:30 in Pacific Auditorium. Stars are born here—like Jo Van Fleet of Broadway and Hollywood fame.

John C. Crabbe heads Pacific's radio-television broadcast and training program. He is returning from a year long special assignment with the National Educational Television Center in Michigan. He supervises management of Pacific's own FM station. For top quality hi-fi listening, tune in at 91.3 mg's on your FM band. For complete program logs write to KCVN, College of the Pacific.

Scores of announcers and other production personnel have been supplied for broadcast stations via Radio Pacific training. Now Pacific graduates are emerging in the TV world, as instruction and practical production experience for the new medium have been developed in the KCVN studios.

Key to California Living

Lincoln Oaks

Sierra Gardens

Mills Park Estates

Chester Manor

Weberstown

Nightingale Manor

Fraser Manor

Danville Heights

Mission Gardens

Tracy Park

Lincoln Square

Lincoln Manor

Rosemoor Gardens

open the **DOOR** to **HAPPINESS** in a

LINCOLN
BUILT HOME

Bringing You Home and Away Games of the C. O. P. Tigers
On Radio Station K-JOY

NORTHWESTERN
vs

COLLEGE
OF THE
PACIFIC

DYCHE STADIUM OCT. 26, 1946.



This sequence from the 1946 Pacific-Northwestern game in Chicago was picked by the Associated Press as the "Play of the Week." In Panel One the Wildcats' quarterback is passing from his own 14. Panel Two shows Eddie LeBaron intercepting on his own 5. Panel Three shows LeBaron lateraling immediately to Andy Hyduke (40). Panel Four shows Wayne Hardin taking the ball from Hyduke's grasp. In Panels Five, Six and Seven he is cutting back to his one yard line and then starting upfield. Panels Eight and Nine show Hardin lateraling to John Rohde on the Wildcat 35, with Rohde going on into the end zone for a 99 yard scoring play. Final: Northwestern 26, Pacific 13.

Vote for a Winning Team!

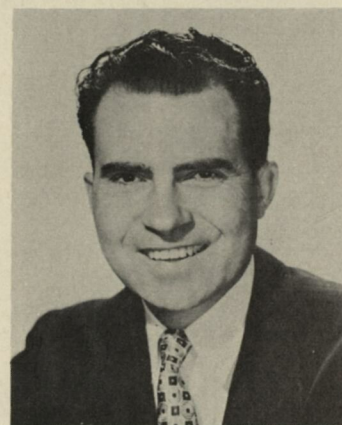


IKE

For
PEACE
and
PROSPERITY

SUPPORT

and



DICK

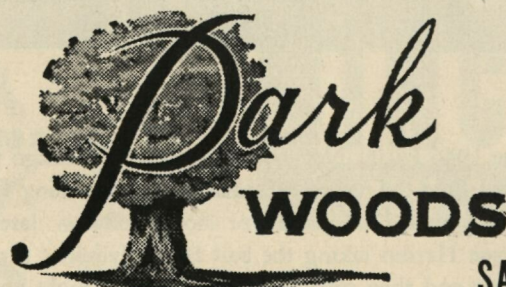
Vote Straight Republican!

NOVEMBER 6, 1956

Exclusively Yours...

**CUSTOM
HOMES, HOMESITES**

For Information On All
Homes And Homesites,
Stop In And See Us.
1515 Meadow Ave.
GR 7-2688



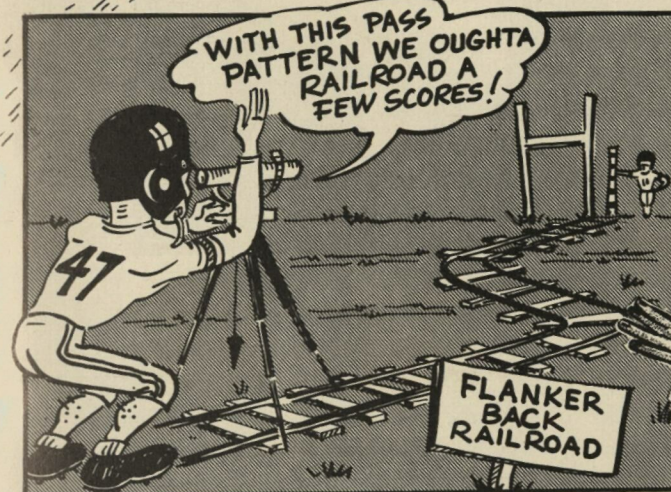
SALES COMPANY

E. W. WESTGATE, Pres.

Tiger Tales

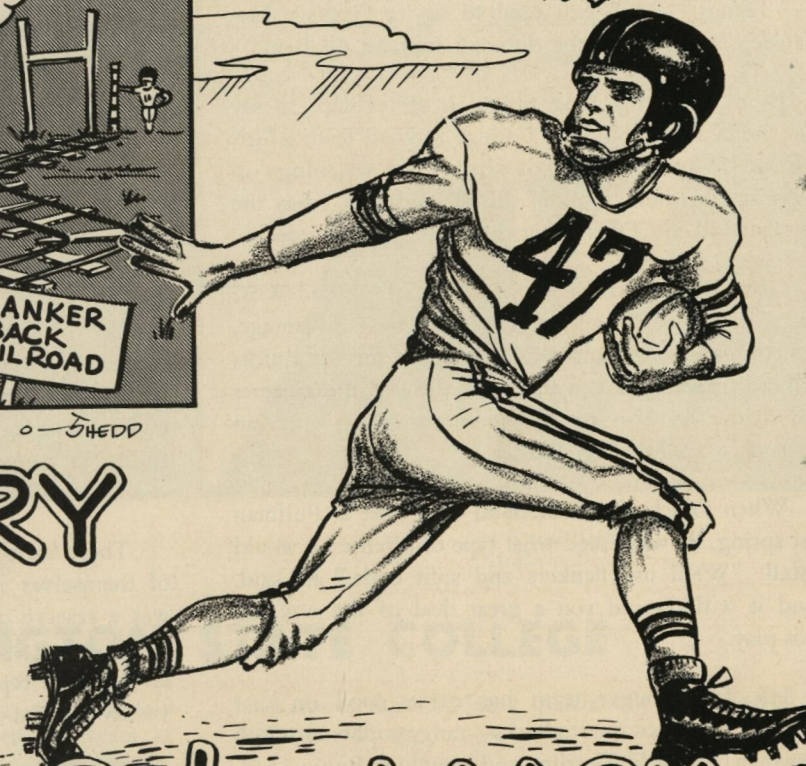


TOM IS AN ENGINEERING MAJOR AND
WORKED LAST SUMMER FOR A RAILROAD



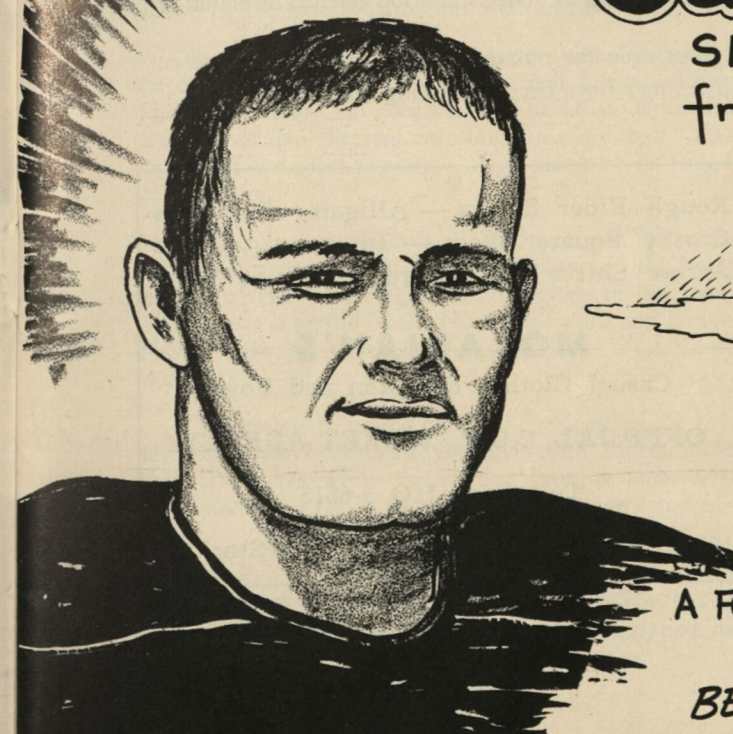
Tom PERRY

RUGGED SENIOR
RIGHT HALF FROM
OAKDALE



Galen LAACK

SENIOR RIGHT GUARD
from ABBOTSFORD, WISC.



A FORD SUPER SALESMAN IN OFF SEASON,
GALEN NEVER MISSES A BET....
BELIEVE ME, HE'S NOT "LACKING"!

THE GAME

By Bill Boni, Sports Editor
SPOKESMAN-REVIEW, SPOKANE

"Things," Ed Wynn used to say to Graham McNamee, "are going to be different tonight, Graham."

Even from this long range, it seems safe to say that the Washington State College football team which you are about to watch—or already are watching—in Memorial Stadium tonight will be different from the one that lost to COP's Tigers by 30 to 0 last season.

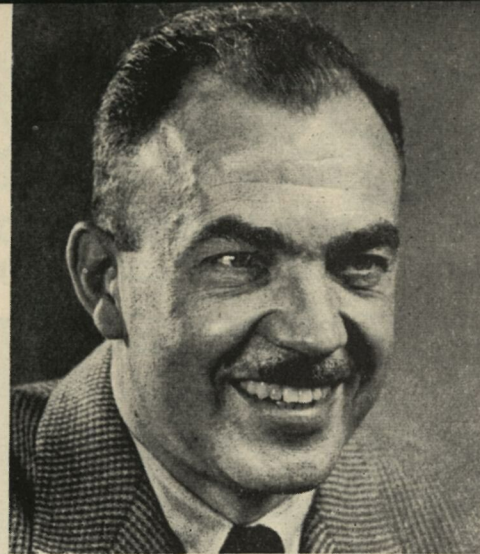
Gone is considerable of the bulk that marked WSC teams in the past, and not always to their advantage. In its stead is an emphasis on speed, on the quick-striking forward pass, which after the first three games had made the Cougars the country's No. 1 team in yardage covered through the air.

When Coach Jim Sutherland took over at Pullman last spring, he was asked what type of offense he would install. "We'll use flankers and split ends," he said, "and it will remind you a great deal of the way the pros play."

His first Cougar team has made good on that promise. The two quarterbacks—rangy sophomore Bob Newman, from El Cerrito, and chunkier Bunny Aldrich, a transfer from Compton's "Little Rose Bowl" champions—have thrown often, and they have thrown well. Sutherland and his staff have sought for the swiftest runners with the surest hands to be their receivers, and one of these has been a 156-pound former Spokane high school quarterback, Don Ellingsen, who now is an end.

Not that all of what the Cougars try offensively tonight will be passing. They have a chunky, hard-to-down sophomore fullback in Ed Stevens, a boy who had played nothing other than eight-man football until he lined up against Stanford in the season opener (a collarbone break kept him out of freshman ball last fall). To spell Stevens there is a 215-pound bone-crusher, also with a good turn of "swift", named Jim Frankson.

The starting left halfback, Chuck Morrell, is one of the Coast Conference's top ground-gainers. The



starter at the other half is Dave Jones, who specializes in punt returns.

Up forward, the Cougars also have undergone an overhauling. Only three seniors were left when the spring drills ended, with all of the starting 1955 line gone. Here, as in the backfield, the stress has been on ability to move and willingness, rather than on sheer—and mere—size.

There are boys playing tackle now who had thought of themselves as ends. Ev Gust, now a senior guard, was a reserve quarterback little more than a year ago. Ted Gray, a starting guard, came to Cougarville with an All-State reputation as an end—and played his first varsity game at center.

The Cougars have made, an undoubtedly will continue to make, mistakes. Any team with so many sophomores among its starters and top reserves is bound to.

But even the mistakes (and I hope Sutherland isn't listening) have been interesting ones.

Rough Rider Slacks — Alligator Raincoats
Crosby Square Shoes — Interwoven Socks
Arrow Shirts — McGregor Sports Wear

MORADIAN'S

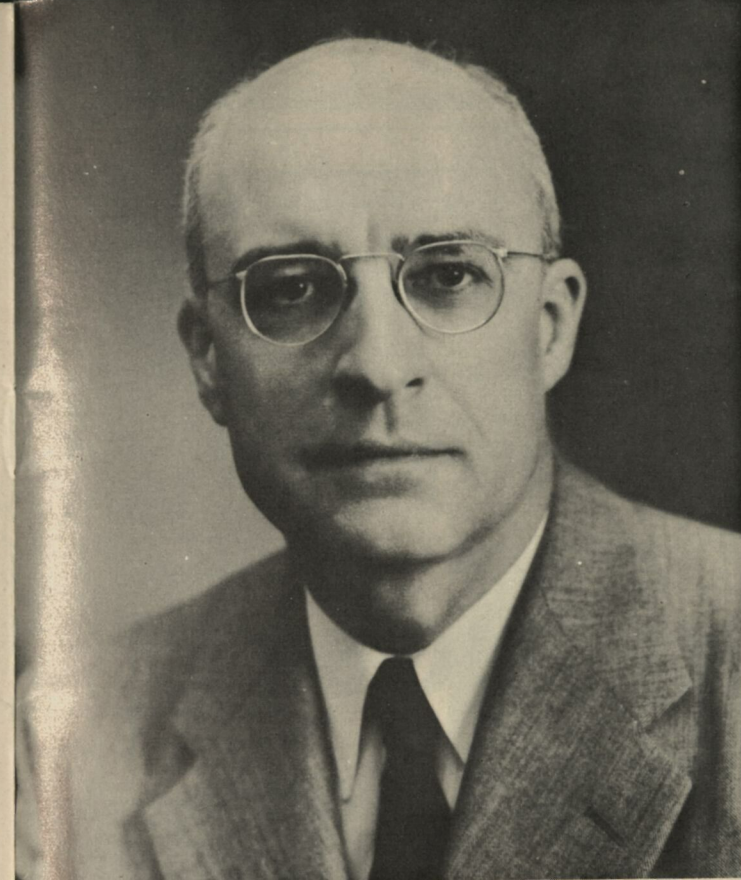
Casual Clothes For Men and Boys

OFFICIAL C.O.P. TICKET AGENCY

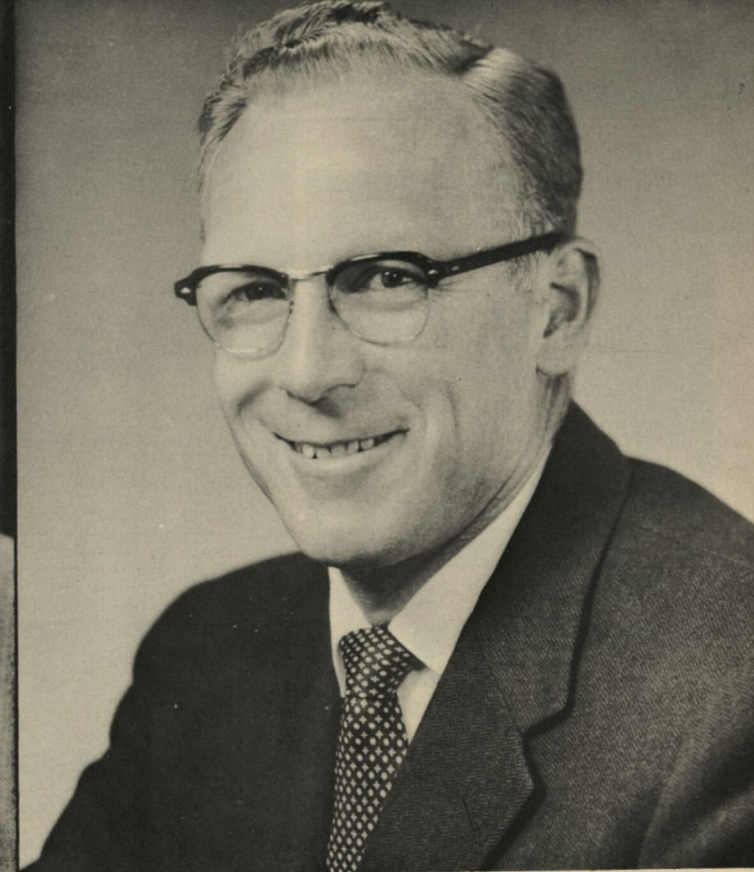
Telephone HO 3-6815

1905 Country Club Blvd.

Stockton



DR. C. CLEMENT FRENCH
President of Washington State College



STAN BATES
Athletic Director

WASHINGTON STATE COLLEGE

The State College of Washington, affectionately known to thousands of graduates over the years as "State" or "Washington State" is a land grant college. The school was established in 1890 under the provisions of two federal laws, the Morrill and Hatch Acts, and action by the first Washington State Legislature.

The State College of Washington actually opened its doors on Jan. 13, 1892, in a small brick building known as "The Crib" with a total of 16 students and a faculty of five. Present enrollment is more than 5,000 in one of the most modern college plants to be found in the nation.

The college is located at Pullman, in Whitman county, a town of about 6,500 inhabitants in the heart of one of the richest agricultural regions in the state. The college is served by the Northern Pacific and Union Pacific railways, excellent highways and West Coast Airlines.

The campus is located on a hill overlooking the rich farming areas of the Palouse river and covers more than 250 acres while the college farm includes 970 acres stretching far to the east of the college campus.

There are more than 90 buildings on the campus for classrooms, laboratories, offices, dormitories and other services. These are linked by excellent paved roads and walks. The State College has equipped its

laboratories with the latest in scientific facilities for all types of teaching.

Facilities for athletic teams are among the finest to be found anywhere. The Stadium at Rogers Field has a capacity of 25,000 seats for football games, and includes a quarter mile cinder track with a 220-yd. straightaway. The Stadium is located adjacent to the J. Fred Bohler gymnasium for men with swimming pool, basketball court with a seating capacity of 8,000 and all modern physical education facilities.

Bailey Field contains two of the finest grassed baseball diamonds in the Pacific Coast conference and just east of Bailey Field is a nine hole golf course owned and maintained by the Associated Students of the State College of Washington.

Known and respected throughout the nation for the quality of its athletic teams, Washington State representatives in athletics are known as Cougars. A live cougar "Butch IV" lives in a special \$6,000 cage near Rogers Field and exemplifies that fighting spirit of Washington State teams.

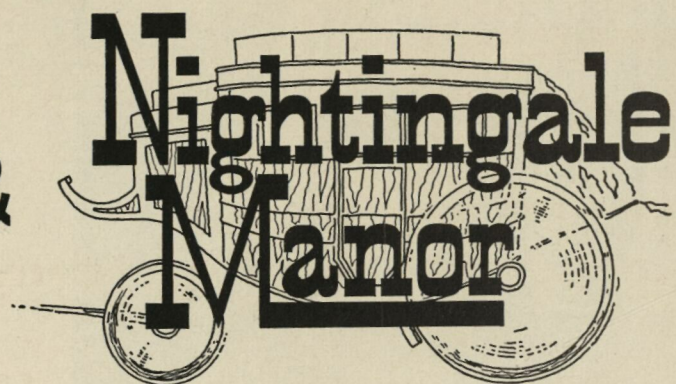
One of the most rapidly growing institutions in the Northwest, if not the entire nation, Washington State expects a Freshman enrollment this year of nearly 2,500 students. This will equal nearly 50 per cent of the present student body.

Two Big Western Winners!

C.O.P. TIGERS &

8th Street West of Mariposa Road

Another LINCOLN BUILT Achievement



FOLLOW THE TIGERS

on

RADIO AND TELEVISION
each week during the 1956 football season

RADIO

The Jack Myers Show

Station KJOY

each Saturday 15 minutes before the Tiger game broadcast

Listen to the Tiger home and road games "LIVE" on KJOY as Denny Kirwan follows the team throughout its intersectional schedule.

TELEVISION

A Complete Filmcast

of the previous Saturday's game each Monday, 9:30 p. m.

The Jack Myers Show

STATION KOVR, CHANNEL 13

Thursday, 8 p. m.

So They Say

His face lit up on his first visit to Bright Spot Electric . . .

"Such courtesy and service is delightful!"

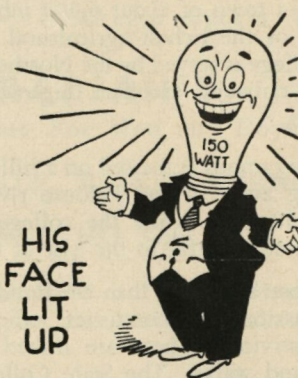
BRIGHT SPOT

"EVERYTHING ELECTRICAL"

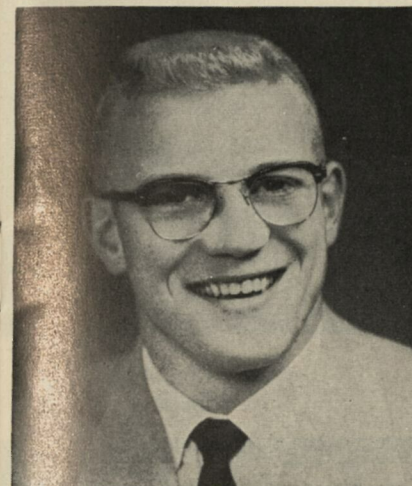
Electric Co.
SALES-SERVICE-REPAIRS

309 E. WEBER AVE.

STOCKTON, CALIF.



WSC COACHES



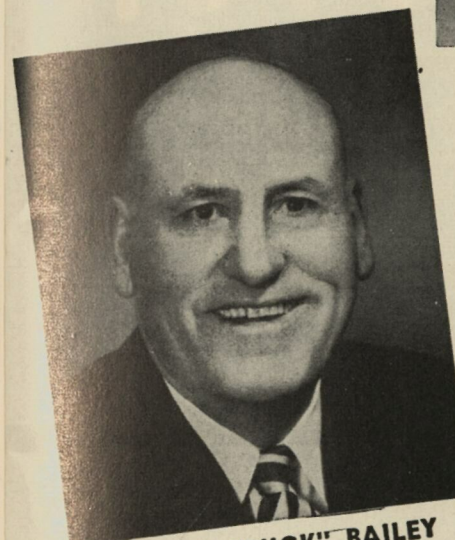
LLOYD TORCHIO
Assistant Coach



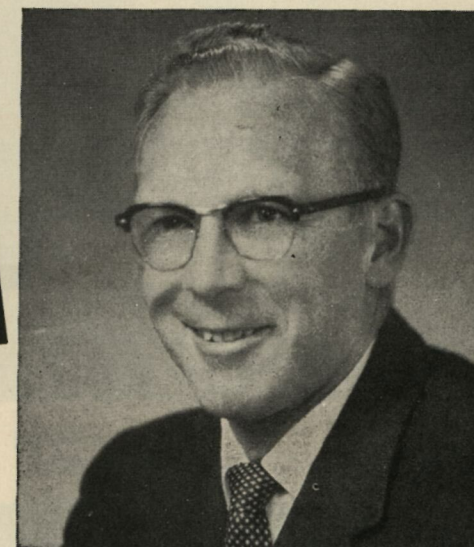
JIM SUTHERLAND
HEAD FOOTBALL COACH



LEON McLAUGHLIN
Assistant Coach



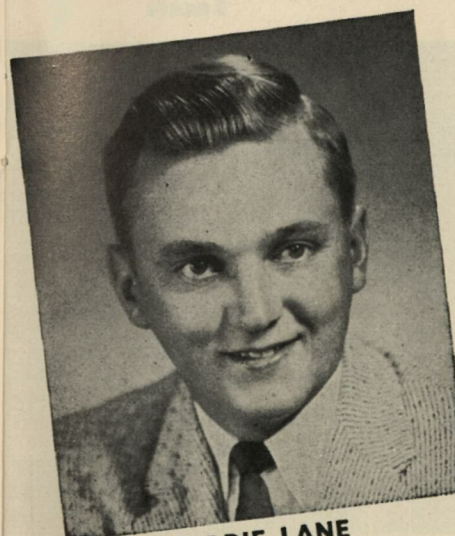
ARTHUR "BUCK" BAILEY
Assistant Coach



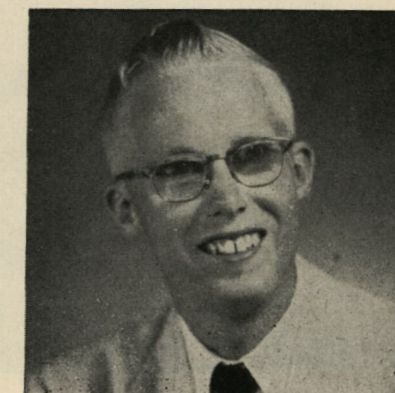
STAN BATES
Director of Athletics, WSC



DAN STAVELLY
Assistant Coach



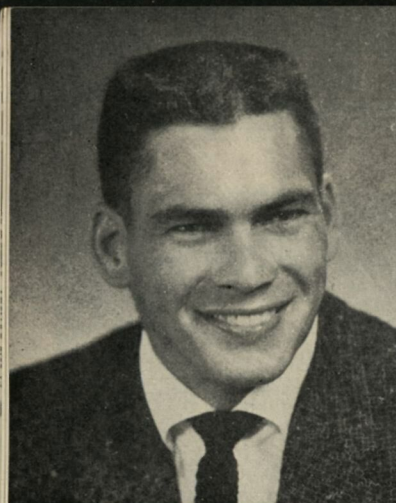
EDDIE LANE
WSC Trainer



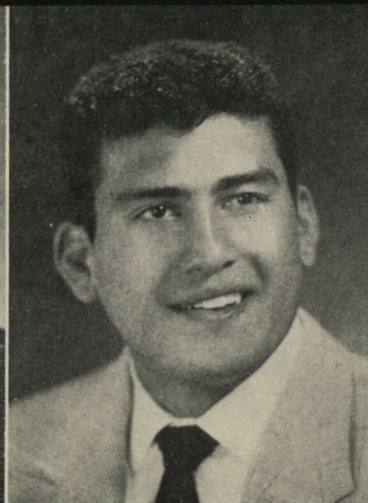
BARRIE HARTMAN
Senior Manager



BOB GAMBOLD
Assistant Coach



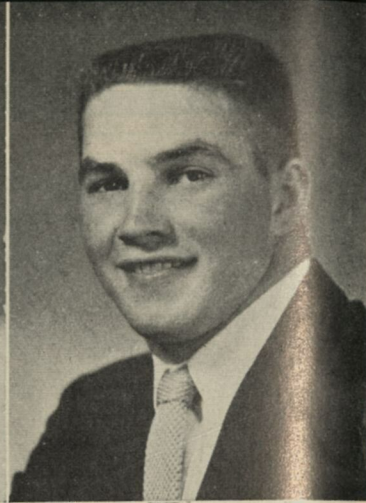
BUNNY ALDRICH
Quarterback



REY ALVARADO
Halfback



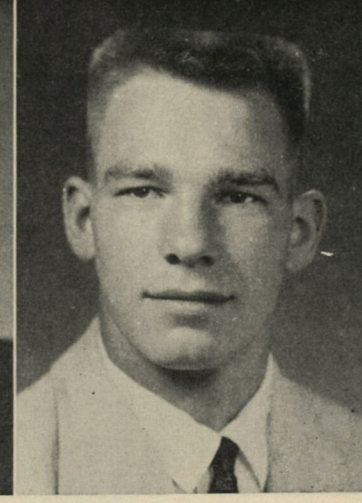
JACK ATWOOD
Center



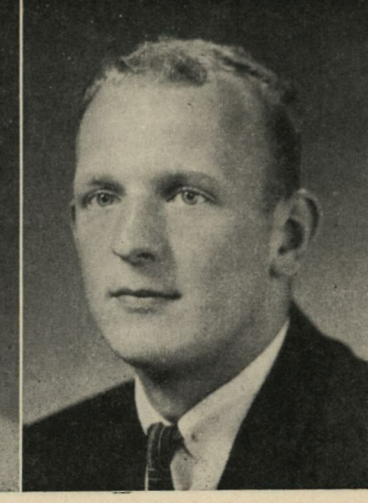
GENE BAKER
Guard



KEN GARDNER
Guard



DON GEST
End

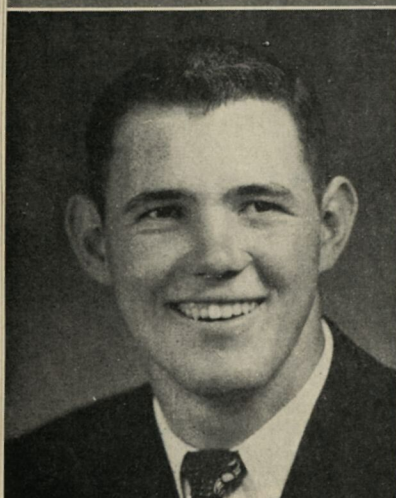


TED GRAY
Center

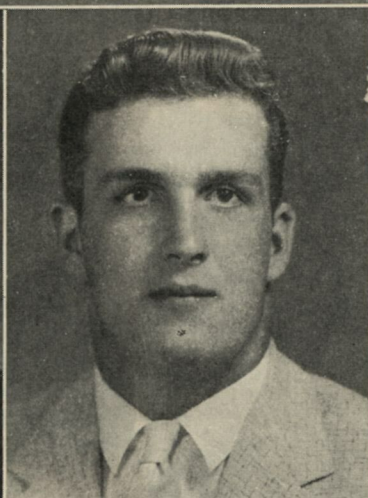


BURL GRINOLS
Tackle

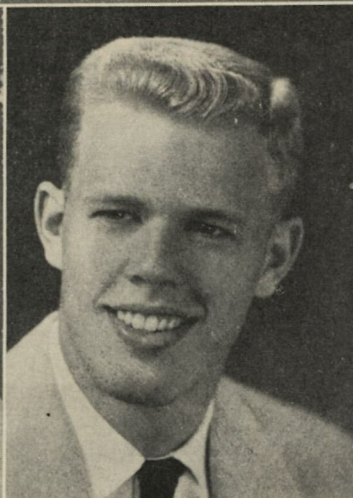
1956 WASHINGTON STATE COUGARS



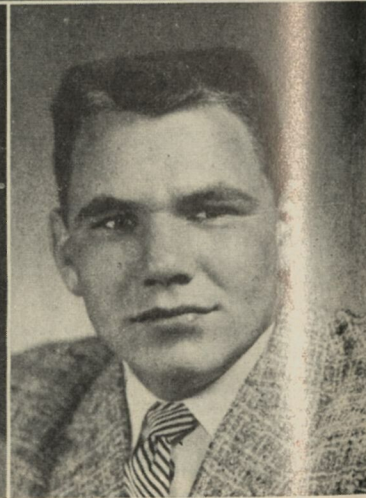
JIM BARNEY
Tackle



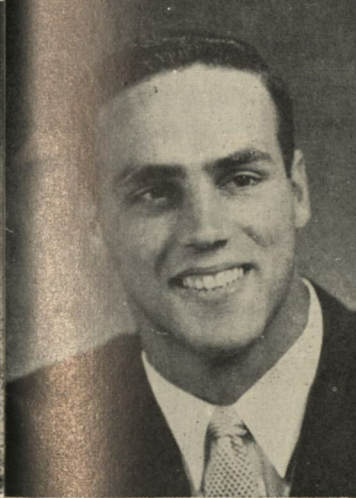
RAY BLIER
Tackle



BILL BUGGE
Guard



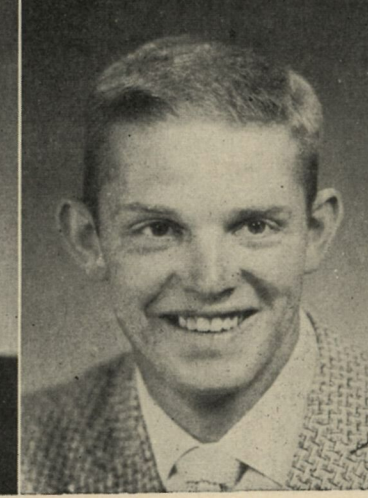
DUANE CHRISTENSON
Tackle



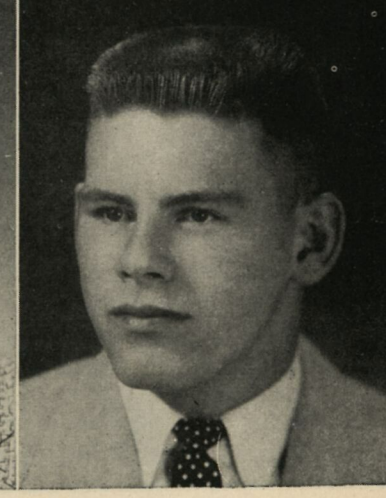
EV GUST
Guard



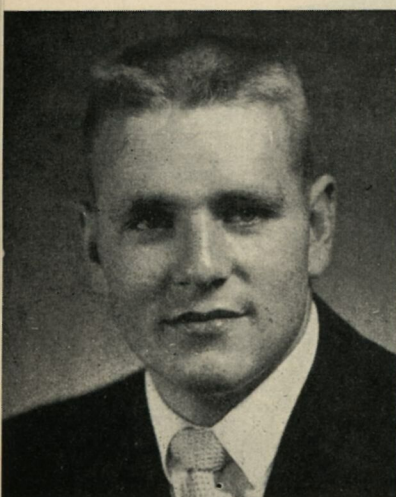
RON HARE
Halfback



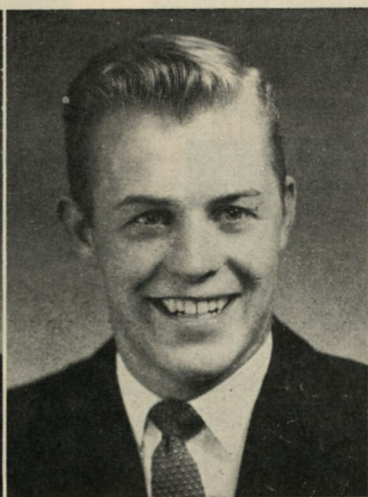
DICK HARRIS
Halfback



DWIGHT HAWKES
End



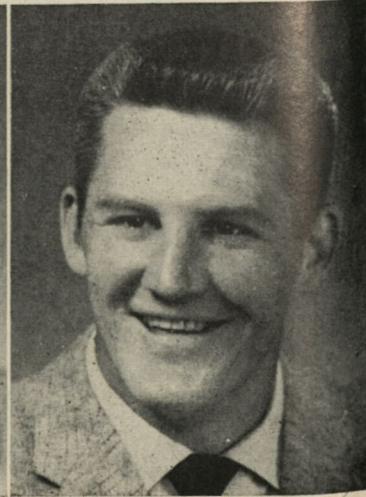
PAUL DU BRUILLE
Fullback



DON ELLINGSEN
End



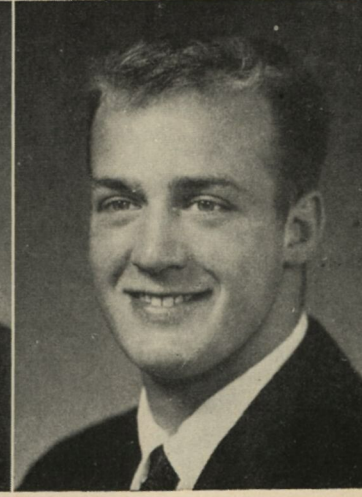
JACK FANNING
End



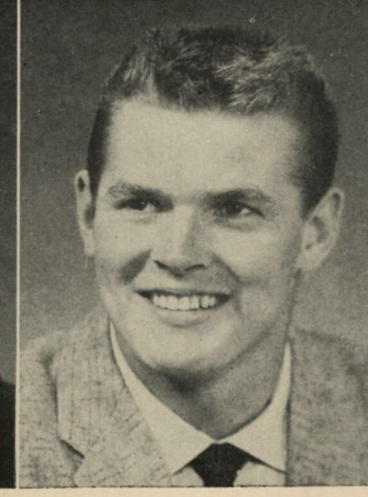
JIM FRANKSON
Fullback



DAVE JONES
Halfback



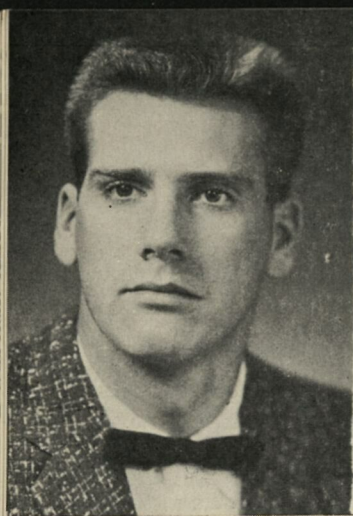
PHIL MAST
Guard



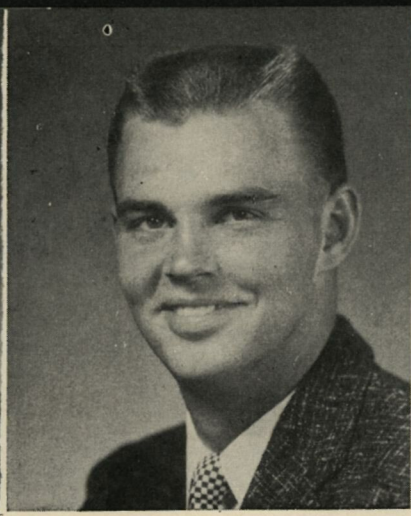
CHUCK MORRELL
Halfback



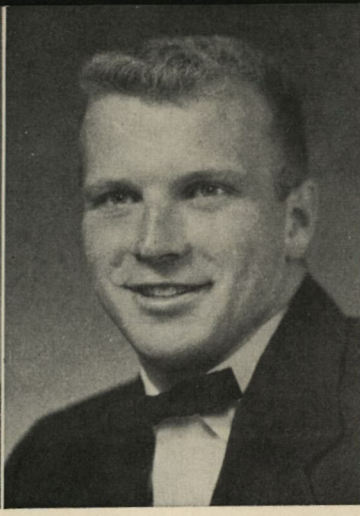
DON NELSON
Tackle



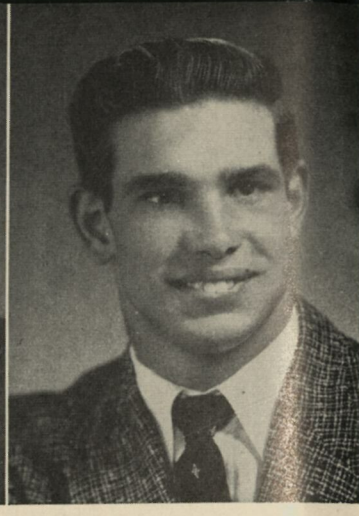
PETE HOLICK
Center



BOB NEWMAN
Quarterback

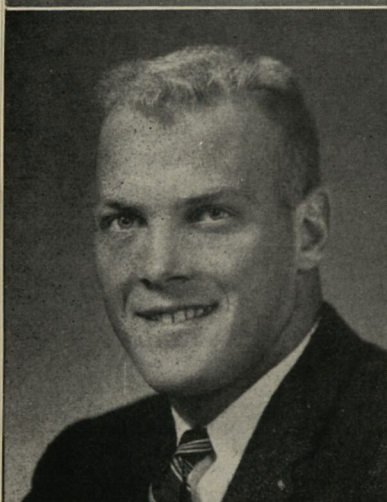


BILL STEIGER
End

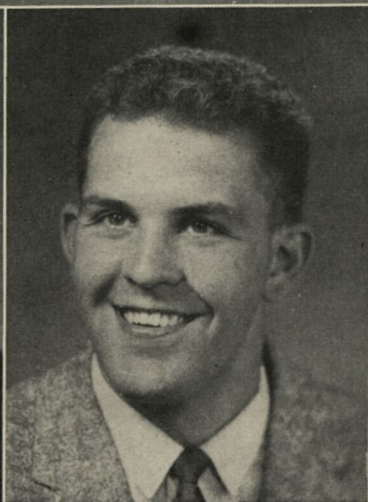


ED STEVENS
Fullback

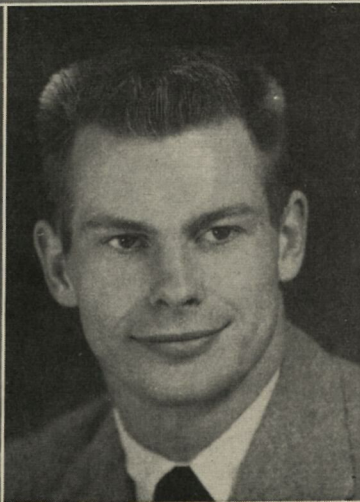
WSC Cougars



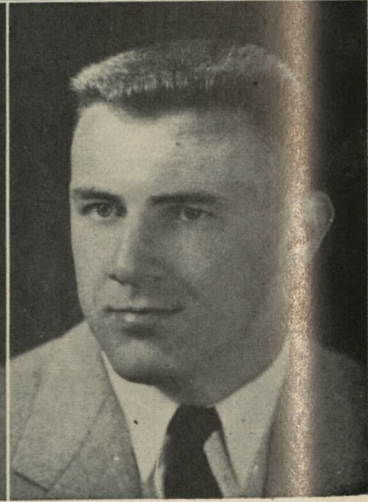
GALE STRAIT
Guard



LEW TURNER
Tackle



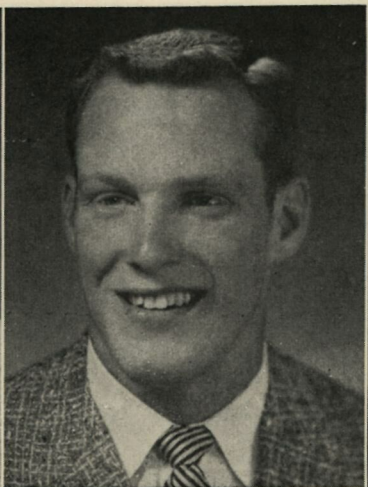
NORM VEACH
End



LARRY WIER
Guard



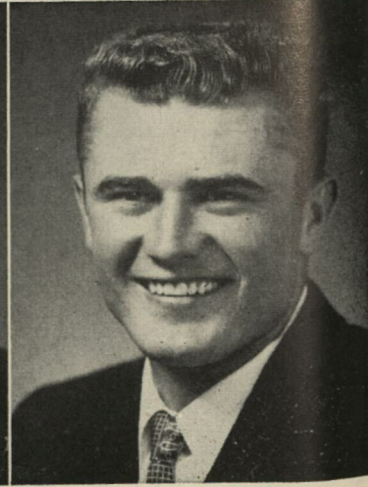
VEL WEST
Tackle



AL WILLIAMSON
Tackle



DAVE WILSON
Quarterback



DICK WINDHAM
Halfback



PACIFIC HOMECOMING QUEEN

Elaine Howse
of Stockton

Queen Elaine Howse is a senior majoring in education and music at the College of the Pacific. She holds the office of Treasurer of the Associated Women's Students, is a member of the college A Capella Choir, the California Student Teachers Association and "Spurs," national sophomore Women's Honor Society.

COMMITTEE CHAIRMEN FOR 1956 HOMECOMING

Following are the College of the Pacific students who headed the various committees for the 1956 Homecoming celebration:

Barbecue—*Marge Stone*
Rally—*John Sylvester and Lynn Waterman*
Bonfire—*Bill Fowler*
Parade—*Stan Emerson*
House Decorations—*Cliff Weldon*
Dance—*Barbara Hamilton*
Publicity—*Roger Moreau*

On behalf of the Pacific Student Association of the College of the Pacific, the committee would like to express its appreciation to the following organizations for their help and cooperation in making this year's Homecoming celebration a success:

THE FLOWER SHED
KATTEN AND MARENGO
MARTIN'S JEWELERS

MIRACLE MUSIC
ERNIE REED CLOTHIERS
THE ALLEY SHOP, LTD.

THE PUMP ROOM

JOIN THE QUARTERBACK CLUB

In 1948 a group of civic-minded sports enthusiasts formed the Quarterback Club to "encourage, promote and maintain support of athletic activities in this area, encourage enrollment of good athletes, work to retain good coaches", and in short, strive for greater recognition of our various athletic teams.

The work of the club speaks for itself. Our teams have received statewide and national recognition—and we want your support. We need at least 1,000 members to do an adequate job—Join now for a greater sports future for this area—for bigger and better sports crowds. Send your sawbuck (\$10) to Bert Van Gilder, Secy. 814 W. Poplar Street.

BOARD OF DIRECTORS

Fred S. Van Dyke, *President*
 Sherwood Norton, *Vice President*
 Bert Van Gilder, *Secretary*
 Jerald Kirsten, *Treasurer*
 Albert J. Charles
 Thomas E. Davis

Charles A. James
 Jack E. Kemp
 Walter S. Kendall
 Jerry Knapp
 Bruno J. Lanzarotti
 Charles Livingston
 Ralph S. Raven

Karl A. Schmidt
 Wm. H. Scott
 Robert Sutphin
 C. M. Warren
 Jack White
 Ray E. Wiley
 Skipper K. Yee

CHARTER MEMBERS

Harold F. Ahearn
 Babe Arata
 Atwood Printing Co.
 John Ball
 Mike Barkett
 Ted Baun
 C. J. Beaty
 W. A. Beckman
 J. George Benner
 F. F. Black
 Julius Blum
 W. H. Braley
 Dr. C. L. Branstool
 Bravo & McKeegan
 Carl Brown
 Laurence E. Brown
 Burnham Brothers
 F. J. Campodonico
 W. E. Cannon
 Dr. J. Myron Carr
 Ralph Carter
 Chase Chevrolet Co.
 Frederick D. Clarke
 Cloverleaf Farms
 Henry J. Colberg
 Dr. W. H. Langley Collis
 James Connell
 M. Corren & Sons
 L. Crispin
 A. H. Davies
 Ed DeCandia

Emil Delucchi
 Louis Dentoni, Jr.
 John Dinubilo, Jr.
 O. M. (Ted) Dye
 John H. Eagal, Jr.
 Leon H. Eakes
 Eales-Young Grain Co.
 R. L. Eberhardt
 C. R. (Mike) Evanhoe
 Bailey Fairchild
 M. Friedberger & Co.
 William Gaines
 Garrow & Bowman
 Joe Gianelli
 Stuart Gibbons
 Samuel Greenberg
 L. F. Grimsley
 Carrol Grunsky
 John Hammer
 H. H. Harper
 M. Hartnick
 William C. Harvie
 Dr. Laurence Heston
 Ralph Hickinbotham
 Edward W. Hickey
 William J. Hobin
 G. R. Hodgins
 Henry L. Jeffery
 Jerry Keithley
 A. E. Kelliher
 Walter Kendall
 John Kessel

W. B. Kitto
 Sol Klein
 Joe Kaeslin
 John O. Knox
 Dan Lane
 Syl Latz
 L. A. Leffler
 R. N. Lowell
 Tom Lucas
 Dr. W. P. J. Lynch
 Pete Marengo, Jr.
 F. C. Marks
 Irving Martin, Sr.
 Harry Mazzera
 S. M. McGaw Co., Inc.
 W. E. McGillvray
 W. R. Mensinger, Jr.
 Patrick Michael
 Jack J. Miller
 Bill Mills
 E. F. Mitchler Co.
 Morris Brothers
 Ray Narbaitz
 Dan Nomellini
 Phil O'Connell Grain Co.
 A. J. Orsi
 Carl Ortman
 C. B. Orvis
 W. S. Orvis
 Parisian Laundry
 Frank Peirano
 Port Stockton Sausage Co.

Joseph R. Rossi
 Renney Motors
 Ben T. Rishwain
 W. G. Ritchie
 Curtis M. Robbins
 Dale Ruse
 O. D. Ruse
 H. C. Sage
 M. A. Sanguinetti
 San Joaquin Motors
 Scott Brothers
 H. L. Silver
 Simard Printing Co.
 Jack Simpson
 Sims & Grupe
 Pomeroy Sinnock
 Douglas Sollars
 Al Speckens
 Charlie Stetson
 Harold Stolberg
 P. E. Taves
 Jack Turner
 Charles Valpey
 B. C. Wallace
 Pete Wallace
 Frank A. West
 E. L. Wilhoit
 E. D. Wilkinson
 Billy Wong
 Don Wood
 Howard Yeager
 Yolland Ice & Fuel Co.

"CENTURY" MEMBERS

Alpine Packing Company
 American Trust Company
 Anglo-California Nat. Bank
 Atwood Printing Company
 Bank of America
 Ted F. Baun, Fresno
 Lowell W. Berry, Oakland
 F. J. Campodonico Co.
 Campora Gas & Appliances
 Cloverleaf Farms

M. Corren & Sons
 Dell Aringa Bros.
 Delta Pipe & Supply Co.
 Eales-Young Grain Co.
 Fraser Sales & Service Co.
 Gaines Market
 Kendall's, Inc.
 John Kessel
 Mantelli & Stefani
 C. J. Olson, Sunnyvale

Wm. S. Orvis, Farmington Stockton Land, Loan & Bldg. Ass'n.
 Leon G. Phifer, Adjusters
 Ruse Lumber Company
 Stockton Savings & Loan Bank
 A. Teichert & Son, Inc.
 Harold W. Thompson
 Thornton Canning Company
 Union Safe Deposit Bank
 B. C. Wallace & Son
 Wood Spray Service, Isleton
 Dunlap Hardware Co.

Lugo's Pizzeria

ACCLAIMED THE FINEST
 BY PEOPLE WHO KNOW

1700 S. El Dorado St.

Stockton

Gaines' Variety & Hardware

2 Convenient Locations

STORE No. 3 — 3332 N. DELAWARE

STORE No. 4 — 4155 N. ELDORADO

—Open Evenings Until 9:00 P. M.—

OVER 20,000 ITEMS TO BUY

QUALITY GUERNSEYS
 PRODUCE
 QUALITY MILK

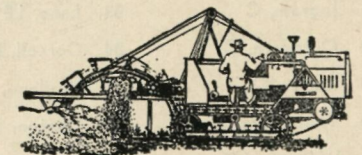
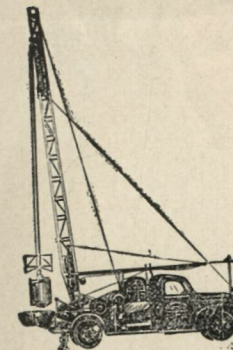


HAPPYHOLME
 DAIRY



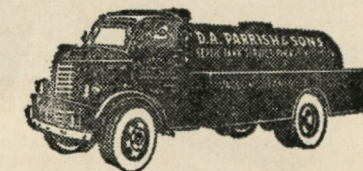
CESSPOOLS
 SEPTIC TANKS

- PUMPING
- DRILLING
- TRENCHING
- INSTALLING
- REPAIRING



FAMOUS
 ONE DAY
 SERVICE
 ANYWHERE
 IN VALLEY

Telephone
 HO 6-9607
 Day or Night



Nothing Down — 36 Months to Pay — Bank Terms

D. A. PARRISH & SONS INC.

MEMBERS CALIF. SEWAGE WKS. ASSOC.

3128 E. MINER AVE.

STOCKTON

DRINK
Coca-Cola
REG. U.S. PAT. OFF.

TIGERS

88 Farrell Funston
78 John Nisby
61 Galen Laack
54 Jack O'Rourke
67 Bob Lee
74 Bill Striegel
86 Bob Denton
14 Jim Reynosa
22 Dick Bass
47 Tom Perry
39 Tom Green

STARTING LINEUPS

LER
LTR
LGR
C
RGL
RTL
REL
Q
LHR
RHL
F

COUGARS

Don Ellingsen 87
Burl Grinols 78
Gene Baker 60
Jack Atwood 52
Ted Gray 64
Don Nelson 70
Bill Steiger 86
Bunny Aldrich 20
Dave Jones 40
Chuck Morrell 42
Jim Frankson 44

Time out for Coke

PACIFIC

10 Filice, QB	61 Laack, LG
14 Reynosa, QB	63 Weaver, RG
15 Flores, QB	65 Mesistrano, LT
16 Whittier, QB	66 Parks, RG
20 Hicks, LH	67 Lee, RG
22 Bass, LH	68 Ortega, LG
24 Metoyer, LH	70 Sartwell, LT
30 Coronado, LH	71 Smith, LT
32 Uselton, FB	72 Vera, RT
33 Bossert, FB	73 Nichols, LT
39 Green, FB	74 Striegel, RT
41 Larscheid, RH	77 Montabana, RT
42 Golenor, RH	78 Nisby, LT
43 Grose, RH	79 Leitaker, RT
45 Chatfield, RH	80 Allerdice, LE
47 Perry, RH	82 Russell, RE
53 Ingram, C	83 Lane, LE
54 O'Rourke, C	84 Cornell, RE
55 Rutter, C	85 Wallace, LE
56 Yamamoto, C	86 Denton, RE
60 Williams, LG	88 Funston, LE

Referee Frank B. Jones
Umpire Jim Lineberger
Head Linesman Milton C. Vucinich
Field Judge David Queen
Back Judge Everett J. Bannister
Alternate James Taylor



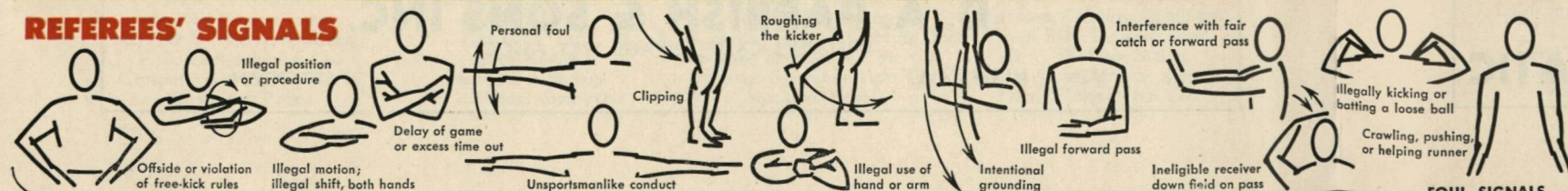
WASHINGTON STATE COLLEGE

10 Harris, H	64 Gray, C
20 Aldrich, Q	66 McPhee, G
22 Alvarado, H	67 Mast, G
24 Newman, Q	68 Gardner, G
26 Coplin, H	69 Weir, G
27 Wilson, Q	70 Nelson, T
31 DuBrille, F	73 Turner, T
35 Windham, H	74 West, T
37 Hare, H	75 Blier, T
39 Frankson, F	76 Barney, T
40 Jones, H	77 Williamson, T
42 Morrell, H	78 Grinols, T
44 Christensen, F	81 Fanning, E
45 Stevens, F	82 Renfro, E
50 Strait, C	84 Gest, E
51 Hollick, C	85 Hawkes, E
52 Atwood, C	86 Steiger, E
53 Bugge, G	87 Ellingsen, E
60 Baker, G	89 Nagle, E
63 Gust, G	

COPYRIGHT 1956, THE COCA-COLA COMPANY

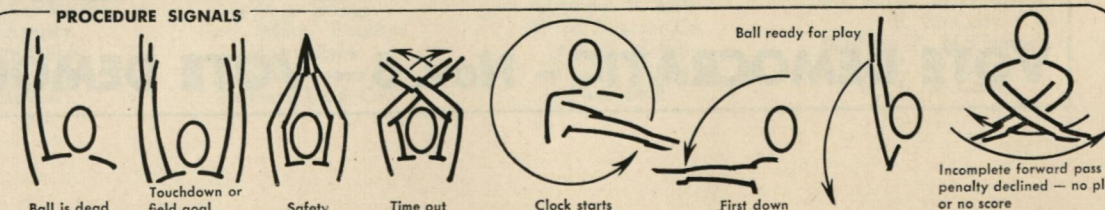
"COKE" IS A REGISTERED TRADE-MARK

REFEREES' SIGNALS



FOUL SIGNALS

PROCEDURE SIGNALS



The Tigers **LIVE**

on

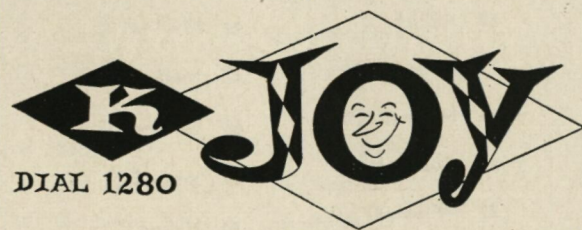
K-JOY

Official Station for All C.O.P.
Athletic Events

Broadcasting Live
as they happen - where they play

"... happiest sound in town"

on



DIAL 1280
HO 4-7313 HOTEL STOCKTON Stockton, Calif.

SIGNS

by



708 E. MARKET ST. STOCKTON, CAL.

Telephone HO 5-2645

QUALITY — DESIGN — SERVICE

RADIO TOW SERVICE

Ray Howeth

DAY AND NIGHT — 24-HR. SERVICE
Our Truck Dispatched by Radio

Auto Storage
General Auto Repairing
Body and Fender Work
Auto Customizing

TELEPHONE HO 5-8053

5672 E. MARSH — OVER SUBWAY

On Nov. 6th Elect ...



**ADLAI E.
STEVENSON
DEMOCRAT
PRESIDENT**

VOTE DEMOCRATIC - Nov. 6 - VOTE DEMOCRATIC

"SAWBUCK" MEMBERS

Daryl Geweke
George A. Stuart
Gene Molini
Stan Zucchelli
Walter N. James
John Keating
Rudy Fachner
John Rohde
A-1 Television & Radio
Dr. William L. Aaron
Dr. Howard M. Abrams
Bob Adams
H. B. Adams
Harold F. Ahearn
Ah Tye Bros.
American Finance Co.
L. E. Andersen
A. S. Anderson
Harvey F. Anderson
Louis T. Arbois
G. L. Ashley
Associated Farm Supplies
Gordon J. Aulik
Avenue Drug Store
Kenneth W. Bansmer
Louie H. Barbieri
R. W. Barklow
C. J. Beaty
Frank Bellato
George Bentley
Berberian Bros.
Harold Berg
R. M. Berkebile
Dr. Ross E. Bewley
William Biddick, Jr.
F. L. Bitterman
F. F. Black
Dr. E. L. Blackmun
Dr. John F. Blinn
Dr. John F. Blinn, Jr.
Roy Boatman, Echo Dist. Co.
Glen Bockmon
Frank M. Bodin
Mrs. Frank M. Bodin
Clark Boggess
Carl G. Boitano
James P. Bonnar
Frank Bono
Boquist & Davis
Elmer R. Boss
Lloyd Bothwell
Mrs. Lloyd Bothwell
Charles A. Bottarini
Clarence M. Bowman
Forest Boyer
W. H. Braley
Bravo & McKeegan
John Breuner Co.
Hamilton Briggs
Dr. William Brock
Dr. Yale Brody
The Brown House
Mort Brown
Richard C. Brown
Elizabeth Bruzzone
Mrs. P. A. Bryant
Lawrence B. Buol
Don Burnham
Dr. Robert E. Burns
Sibley E. Bush
Ken Buxton
Harold D. Caldwell
Californian Clothiers
California TV Service Co.
Campbell Agency
Campus Barber Shop
Rocco Caporusso
Robert Carlson

C. D. Carmean
Wm. D. Carroll
Edwin E. Carver
Charles W. Cary
Harry Casey
V. C. Cassilis
Castle Seed Co.
Cecchini & Malpasso
Chapin Bros. Plumbing
Charity Lodge No. 6, IOOF
Albert J. Charles
R. John Charles
Chase Chevrolet Co.
John Cheney
Chet's
Bob Christoferson
City Meat Market
Clark Well Drilling Co.
Dr. Stanley A. Clark, Jr.
Ted Clark
Wm. Wear Clark
Fred D. Clarke
Dr. Emerson G. Cobb
Jack Colberg
Wilton H. Colberg
College Pharmacy
Dr. Geo. H. Colliver
James L. Connell
Tom Connolly, Jr.
Continental Can Co.
Frank E. Cook
J. V. Cooper
Costanza's Pacific Coffee Shop
Craft Construction Co.
Bruce Craver
Hollie M. Crawford
Jay D. Crist
Bradford Crittenden
D. Clifford Crumney
Culligan Soft Water Service Co.
Roy Damilano
Dr. W. E. Daseler
Frank N. Davinroy
Thomas E. Davis
Day & Night Fountain
Daniel De Angelis
Dean DeCarli
Delta Rubber & Equipment Co.
Emil Delucchi
Dr. Nicholas W. Demas
Bart Dentoni
J. R. Dickerson
Clarence Diffenderfer
John Dinubilo, Jr.
Dixon & Platek
James M. Dobbins Realty Co.
Robert S. Donaldson
Don's Welding & Machine Shop
Carroll Doty
Jack Dozier
Ben Drewes
Lloyd W. Drury
R. L. DuBois
Dunlap Hardware Co.
C. W. Dunlap
Raymond M. Dunne
Hank Dutcher
Leon H. Eakes
Robert M. Eberhard
Dr. John Eccleston
A. B. Eichelberger
Charles L. Ellis
Charles Epperson
Barbara Estrada
Carl "Mike" Evanhoe
Harry Eybs
Will Fannon
Farmers Feed Co.

Farmers Mutual Fire Ins. Co.
Chet Farnsworth
Edward E. Fay, Jr.
Bert L. Ferguson
Dr. Kenneth T. Fergusson
John Fern
Elmo E. Ferrari
Tom Field
John Figone, Jr.
Joe Filippi, Jr.
George J. Filpi
John W. Firth
Clarence S. Fisher
Harrison M. Fisher
Richard Fowler
Robert W. Francis
Bernice Frankenheimer
R. E. Fraser
M. Friedberger & Co.
Edwin B. Fuld
Peter Gaines
Ted Gaines
William Gaines
David L. Garden
Ernie Garibaldi
Michael Garrigan
Robert Garrow
Garvey Truck Service
Donald Gentry
Robert A. George
Thomas C. George
Ghiorzo Bros.
Stuart Gibbons
Howard H. Gibson
J. Walker Glenn, Jr.
Arthur Glick Jeweler
Gluskin's Camera Corner
Golden Gate Co.
Ray Golden
H. F. Goldsmith
Gravem-Inglis Baking Co.
Dr. W. Edgar Gregory
Grider Electric Co.
Griff's Meat
Dr. Ernest C. Griner
Robert E. Grogan
Carroll Grunsky
Hunter Gump
Donald M. Hall
Dr. R. W. Hall
John Hammer
George B. Hammond
Sam Handler
Hannay's Shoes
James I. Harkins
H. H. Harper
Dr. Don C. Harrington
Dr. Marion M. Harris
Mrs. Rose Moody Hart
Vernon L. Hatch
Geo. A. Hawley
Harold A. Heisinger
Larry Heller
Paula Heller
Sedelle Heller
F. O. Hellwig
Carlos W. Helton
Henry's Rolling Pin
Roland E. Henson
K. O. Hester
Dr. Laurence L. Heston
Ralph Hickinbotham, Jr.
Gene Highfill
Andrew P. Hill
H. M. Tractor Co.
John P. Hobin
Wm. J. Hobin
Paul Hoff

Melvin L. Hoffman
G. R. Hodgins
Dale G. Hollenbeck
H. D. Holt
Simpson H. Hornage
Bob House
David House
Craig Hubbard
Scott Hubbard
Jack Hurley
A. S. Hyduke
Dr. Clarence S. Ing
Earl R. Jackson
Lyle R. Jackson
Bill Jacobs
Charles A. James
Earl Jann—Nat. Dollar Store
Bradford Jeffry
Renaldo J. Jeffry
Al Johnson—Valley Pattern
Al C. Johnson
Bill Johnson
Max Johnson
Dr. Neil P. Johnson
Ralph Johnson
Jones Bearing Supply
Dr. J. R. Jordan
Walter Jorgensen
Clarence Kamps
Jack Kane, Realtor
John C. Kelley
Wm. V. Kelly
Jack E. Kemp
Walter S. Kendall, Jr.
Fran Keppel
Ed B. Kientz
Harold C. King
Howard King
King Island Fishing Resort
H. R. Kitto
Austin Klieves
G. R. Knapp
Virginia Knapp
Dr. Tully C. Knoles
Ted Knowles
Clarence Kooy
Kraft Tire Co.
K X O B—Ort Lofthus
Kenneth R. Ladd
Dan Lane
Bruno J. Lanzarotti
Lease Wrecking Co.
Blake LeBaron
Fred V. Lefever
L. A. Leffler
Howard O. Lenz
H. B. "Pete" Lenz
David W. Leonard
Howard C. Lewis
John Lilly
Lincoln Super Service
Ellis Lind
Gene Lippen-Holtz
Charles F. Livingston
W. L. Linee—Knobby Shop
A. Lobenberg
L. A. Lodde
Frank Lourentzos
Tom Love, Jr.
Dr. Wm. G. Low
Dr. C. A. Luckey
Willard Lutz—Delta Lines
Ralph MacDannald
Dr. K. H. MacPherson
J. E. McCarty
William F. McClintock
J. F. McClory
W. E. McCown

Washington State College Football Roster

NO.	NAME	POS.	WT.	HT.	AGE	CLASS	EXPERIENCE	HOME
10	Dick Harris	H	164	5-11	19	Soph.	JC-1	San Pedro, Calif.
20	Bunny Aldrich	Q	171	5-11	26	Jr.	JC-2	Honolulu, T. H.
22	Rey Alvarado	H	200	5-11	21	Jr.	WSC-1	Los Angeles, Calif.
24	Bob Newman	Q	182	6-2	22	Soph.	Fresh.	El Cerrito, Calif.
26	Clarence Coplin	H	162	5-8	19	Jr.	WSC-1	Seattle
27	Dave Wilson	Q	153	5-9	19	Soph.	Fresh.	Olympia
31	Paul DuBrille	F	195	5-10	19	Soph.	JC-1	Lewiston, Ida.
35	Dick Windham	H	184	5-8	21	Jr.	JC-2	North Hollywood, Calif.
37	Ron Hare	H	167	5-10	18	Soph.	Fresh.	Spokane
39	Jim Frankson	F	208	6-2	23	Soph.	JC-1	Yakima
40	Dave Jones	H	167	5-11	20	Soph.	Fresh.	The Dalles, Ore.
42	Chuck Morrell	H	194	6-0	19	Soph.	JC-1	Downey, Calif.
44	Duane Christensen	F	201	5-11	19	Soph.	Fresh.	Portland, Ore.
45	Ed Stevens	F	183	5-9	21	Soph.	Fresh.	Lind
50	Gale Strait	C	191	5-11	22	Soph.	Fresh.	Spokane
51	Phil Hollick	C	175	5-11	19	Soph.	Fresh.	Richland
52	Jack Atwood	C	200	6-2	23	Jr.	JC-2	Compton, Calif.
53	Bill Bugge	G	200	6-1	20	Soph.	Fresh.	Olympia
60	Gene Baker	G	199	5-11	21	Jr.	WSC-1	Buckley
63	Ev Gust	G	187	5-11	21	Sr.	WSC-2	Tacoma
64	Ted Gray	G	187	5-11	19	Soph.	Fresh.	Seattle
66	John McPhee	G	204	5-11	20	Soph.	Fresh.	Seattle
67	Phil Mast	G	190	5-11	19	Soph.	Fresh.	Spokane
68	Ken Gardner	G	199	5-11	21	Jr.	WSC-1	Richland
69	Larry Weir	G	192	5-11	23	Jr.	WSC-1	Spokane
70	Don Nelson	T	225	6-2	20	Jr.	JC-2	North Hollywood, Calif.
73	Lew Turner	T	199	6-2	21	Sr.	WSC-1	Spokane
74	Vel West	T	214	5-11	20	Soph.	Fresh.	La Grande, Ore.
75	Ray Blier	T	211	5-11	19	Soph.	Fresh.	Colville
76	Jim Barney	T	190	6-1	20	Soph.	Fresh.	Prineville, Ore.
77	Al Williamson	T	201	6-0	19	Soph.	Fresh.	Kelso
78	Burl Grinols	T	208	6-0	21	Sr.	WSC-2	Kelseyville, Calif.
81	Jack Fanning	E	170	6-0	19	Soph.	Fresh.	Spokane
82	Jim Renfro	E	175	6-0	19	Soph.	Fresh.	Portland Ore.
84	Don Gest	E	200	6-4	22	Jr.	WSC-1	Spokane
85	Dwight Hawkes	E	184	6-0	21	Jr.	Sq.	Seattle
86	Bill Steiger	E	187	6-0	21	Jr.	WSC-1	Olympia
87	Don Ellingsen	E	156	5-10	19	Soph.	Fresh.	Spokane
89	Jack Nagle	E	170	5-10	19	Soph.	Fresh.	Pullman

Charles W. McEwen
S. M. McGaw Co.
Stewart McGaw
Robert McKeegan
Art McLaughlin
Alex J. McRae
Edwin Macon
Guido A. Marengo, Jr.
Rudy Marengo
Don Marlette
R. R. Marsh
Wilson Marsh
Harry A. Martin
Irving L. Martin
John Martin
Martin's Jewelers
Frank V. Mayo
E. J. Meister
Gus Mellis
Dr. Albert K. Merchant
Herbert L. Merrihew
Ralph Merrill
Miller, Kroloff & Brown
J. H. Miller
Ray I. Miller
Chamness Mills
L. A. Mills
Miracle Drive In
Miracle Music
Sib Misasi
Harry R. Momi Realty
Bill Montgomery
J. K. "Kenny" Moore
Morris Brothers
W. H. Morris
Wes Morrison
Morthrift Finance Co.
Les Moyle
Muldowney Printing Co.
Norman J. Mulholland
Harvey Mullen
Jack Myers
Norman Mykles
Arthur Nakashima
Harold R. Nelson
Nichley & Sons' Seaside Service
Harold A. Noble
W. G. Norris
Norris & Logan
Northcrest Pharmacy
O. S. Norton
William S. Oftebro
Jack O'Keefe
Charles A. Orcutt
G. Orsi & Son
Carl Ortman

Orvis & Clinger, Inc.
Ed O'Toole
Bill Owen
Pacific Liquor Store
Myron E. Page
Lou A. Papais
Parisian Laundry
R. Wayne Parker
E. Dale Parlier
Richard Parsons
Charles Patmon, Jr.
M. G. Pauken
Peirano Bros. & Co.
Pepsi-Cola Bottling Co.
Jack Peters
H. W. Peterson
Roy Peterson
Raymond Pezzi
Marion Phillips
Clement A. Plecarpo
Joseph A. Plecarpo
Charles S. Plumb
Rowland C. Pollard, Jr.
W. F. Pope
T. R. Price
Nolan D. Pulliam
Quinn's Stationers
Walter Rathhaus
Henry Ratto
Ralph S. Raven
Ernie Reed, Inc.
Renney Motors
Retail Clerks Local
Ribal & Salini
Patrick J. Ribero
Leslie Richardson
Charles Richmond
Glen R. Richmond
J. R. Ridgley
Edwin Rieb
Ed H. Rimington
Bill Rippey
J. A. Ritchie
Curtis M. Robbins
Reed Robbins
J. Y. Roberts
W. Bill Roberts
Hazel A. Robinson
David B. Rodkin
Thor Romer
John Roscelli
Wm. D. Ross
Rotary Club
Gene "Skip" Rowland
Jesse R. Rudkin
Blaine Runnels
Newton Rutherford

A. F. Salfeld
Roy Sanders
Dr. Geo. H. Sanderson
Col. H. E. Sanderson
Otto Sandman
San Francisco Floral Co.
M. Angelo Sanguinetti
San Joaquin Realty
Harry Sbragia
Roy C. Schaeneman
Russell J. Schaeneman
Karl A. Schmidt
Warren Schmidt
Louis F. Schmitt & Son
Dr. O. H. Schroebel
Adriel Scott
Arlee Scott
Frank Scott
William H. Scott, Jr.
Dr. Wint S. Scott
George Segarini
Lawrence H. Seifert, Sr.
Robert A. Shedd
Donald R. Sheldon
Alan B. Short
Joe Silva
Peter J. Simonelli
Jack W. Simpson
Irvine Singleton
J. Calvert Snyder
J. C. Sommers
Bob Sousa
Carlos A. Sousa
Joe Sousa
Standard Office Equipment Co.
Stanley's Meat Market
Stanley J. Starkey
Stephens Bros., Inc.
Stockton Dry Goods Co.
Stockton High Twelve Club
Stockton Jr. Chamber of Commerce
Stockton Realty Board
Vernon V. Stoltz
Wayne Storer
Max D. Stone
Merrill Stone
J. W. Strickling
Norman C. Sullivan
Robert Sutphin
W. L. Swannell
I. E. Sweet
Lester Y. Sweet
Ernie Tate
Ken Taylor
Jack K. Tener
Termite Control Co.
Boyd Thompson

Dr. Rudolph Toller
Toy Box
John H. Travaille
Harry C. Tremain
Robert Trickey
Carl Truex Ins. Agency
Wendell R. Truex
Jack Turner
Turner Hardware Co.
Ward Tyler's Sport Shop
Hilmut G. Ulmer
Marvin H. Van De Pol
Fred Van Dyke
James C. Van Dyke
P. H. Van Etten
Bert Van Gilder
G. W. Van Vlack
Della Vignolo
Tony Vignolo
Vogue Cleaners
Clay D. Waggoner
W. L. Waggoner
Edgar P. Wagner
Lyle M. Walker
James E. Walshe
W. C. Walter
C. M. Warren
Adolph Weber
Bert H. Webster
C. L. Weesner
George P. Weitz
E. W. Westgate
Westside Associated Garage
Dr. George K. Wever
Bob Wheeler
Jack White
C. V. Wilbur
Charles E. Williams
Ross Williams
T. E. Williamson
Walter F. Willmette
George L. Willson
Douglas Wilson
Louis L. Windmiller
C. W. Wines
Dr. Benjamin Winick
Clifford C. Wisdom
Harold Womble
Wright Lumber Co.
Skipper K. Yee
Dr. Edward P. Yelland
Dr. Richard L. Yelland
Yellow Cab Co.
Yost Brothers
Harold Zakel
Dr. Robert F. Zeller

"SAWBUCK" MEMBERS - OTHER CITIES

Harlie E. Amburn, Lodi
Carl Apley, Mokelumne Hill
Garrett Beckley, Linden
Irvin R. Bender, Lodi
Melvin Berg, Linden
Ernest M. Bobson, Manteca
Robert E. Bondshu, Mariposa
George E. Briare, Carmichael
Bob Coe, Sacramento
Harold Easterbrook, Los Gatos
Paul H. Easterbrook, Fresno
Don J. Edison, Oakland
R. C. Ferguson, Newman
Harris Fine, Tracy
J. Pete Gambetta, Merced
Joseph Garino, Ripon
Dean A. Gay, Bakersfield
Stan Goldman, Los Angeles

Bart Grogan, Palo Alto
Mrs. A. L. Groves, Farmington
Wallace L. Groves, Farmington
W. J. Heath, San Jose
Dr. R. Bruce Henley, Oakland
Dr. Lloyd L. Henry, Manteca
Russell Herbert, Mokelumne Hill
L. C. Holmquist, Ripon
Ralph Houston, Linden
O. D. Jacoby, Oakland
Lowell L. Jensen, Newman
Leroy Johnson, Washington, D. C.
Allen H. Jones, San Francisco
Robert H. Kershaw, Lodi
Robert Kientz, Oakland
Eddie LeBaron, Lodi
J. M. Ledbetter, Sacramento
Oswald A. Lombardi, Mokelumne Hill
Don Lowe, Lemoore

Daren McGavren, San Anselmo
John S. McMillan, San Mateo
Marchese & Lippert, Lodi
Robert Monagan, Tracy
Robert F. Nikkel, Sacramento
N. T. Nowell, Thornton
George Odell, Jr., Sacramento
N. M. Parsons, Oakdale
Otto L. Pirtle, Lodi
Donald E. Piler, Mokelumne Hill
Theodore Poulos, Manteca
Neil Preszler, Lodi
Wm. Rempfer Realty, Lodi
Russell Reno, Manteca
John P. Rohde, San Jose
Clarence W. Royce, Oakdale
Marian V. Schroven, Penfield, N. Y.
Arnold Scott, Petaluma
Douglas Silva, Orinda

Floyd V. Smith, Concord
Kenneth E. Stowell, Lodi
Everett W. Stark, San Francisco
Harry M. Straine, Jr., Sacramento
Arnold G. Strom, Salinas
W. K. Sturrock, Jr., Altadena
Franklyn B. Swartz, Sacramento
Ernest Tirapelle, Lodi
Lester Tiscornia, St. Joseph, Mich.
Jack M. Toedt, Sacramento
Lloyd H. Truman, Piedmont
Art Waldorf, Culver City
Herbert K. Williams, Jr., El Cerrito
Dr. Robert C. Winter, Manteca
Don Wood, Lodi
"Rube" Wood, San Jose
T. G. Yancey, Newman
Joe Zolezzi, Linden



AN ALL - AMERICAN ON IKE'S TEAM

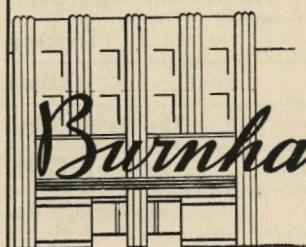
RE-ELECT

LEROY JOHNSON

MEMBER OF CONGRESS

ELEVENTH CALIFORNIA DISTRICT

VOTE FOR A RECORD — NOT A PROMISE



Burnham Bros.

DECORATIVE SERVICE

HOME FURNISHINGS

FLOOR COVERINGS

DRAPES AND SHADES

GAS AND ELECTRIC APPLIANCES

417-423 E. Weber Avenue

Telephone HO 5-5913

Your Shirts In Poly Bags



1136
West
Fremont

HO 3-7749

Complete Laundry and Cleaning Service
For The Entire Family

We Carry EVERYTHING but the Janitor
Disinfectants — Soaps — Cleaners
Wax — Floor Polishers — Deoderants
Janitorial Supplies



Telephone
HO 3-3885

24-Hr. Service

830 E. Hazelton
Stockton

THE GAME

By Carroll R. Doty

There have been many thrilling football games played down below at Homecoming time and here we are again with a contest which shapes up as the pappy of them all for thrills.

You'd have to search pretty far to beat Loyola's 35-33 win over Pacific in the 1950 Homecoming, the Tigers 21-7 conquest of Clemson in 1951, San Jose State's last 24 seconds win, 26-21, in 1952, the 20-7 upset of Texas Tech in 1954 or last year's 13-7 upset of Oregon State.

All of those games were thrillers, each in its own way, and each one was quite a memorable experience.

Those games were loaded with glittering stars of the gridiron, too. Players whose performances for their school, whether it be Pacific or opponent, will cause talk in club rooms and watering spas for quite some time to come.

Who could forget, for instance, the brilliant passing display put on by Loyola's Don Klosterman, who sent Pacific fans home grumbling about the poor pass defense by completing a mere 26 passes against the Tigers in 1950.

Or how about the sensational defensive end play of Norm Schade against the Clemson Tigers. This Pacific Tiger almost single handedly jammed up single wing power plays all night in probably this stadium's finest display of defensive prowess.

Can any Tiger rooter fail to be haunted by dreams of Hula-hipped Roy Hiram, San Jose State's little speedster, snaking his way some 39 yards through a vainly grasping horde of Bengal tacklers with only 24 seconds left and the Tigers leading, 21-20. But whether you liked the end result or not, you can't but realize it was one of football's great come-through performances.

Ernie Lindo provided local fans with plenty of excitement in 1954 when he set a new school rushing mark of 191 yards for one game and scored twice on gallops of 76 and 65 yards from scrimmage to lead Pacific to a 20-7 win over heavily favored Texas Tech.

From last year's Homecoming game there were few real individual standouts but that big Tiger forward wall — the Super Seven — which wound up tops on the Pacific Coast and 12th in the nation in rushing defense, had itself one of several finest hours, holding Oregon State's power-packed single wing to 62 yards on the ground. Across, from left to right, A. D. Williams, Gene Cronin, Neven Hulsey, Jack O'Rourke,

Galen Laack and Buzz Williams, John Nisby and John Thomas showed on that night why they are ranked by most as the best line ever to represent the Tigers.

There have been many other Homecoming stars in addition to the headliners mentioned above. A lad named Don Hardey looked like just about the greatest running back you'd ever want to see in that 1950 Loyola game. Unfortunately, his side lost so the winners' star got the headlines.

Eddie Macon did a whale of a job packing the ball against Clemson in 1951, Tom McCormick gained 175 yards and scored three touchdowns before Hiram sunk the ship in 1952. The 1954 game saw a little-used and little-thought of halfback named Milt Adair start his first game at quarterback against the Raiders and proceed to conduct himself like a veteran. And will you ever forget the determined running of Kenny Swearingen and Dewey Tompkins on that final drive against the Beavers last year? A pair of little guys making the big ones like it. Also, you won't see much better than Joe Francis and Sam Wesley, who almost combined to lick the Bengals at Homecoming in 1955.

All of which brings us up to 1956 and Homecoming once more. Who do you think will provide the thrills and bring the crowd cheering to its feet, as only college football players appearing before the old grads can do? Some of the obvious names are Bass, Flores, Reynosa, Funston, or any number of others.

Or it could be one of the fine young men from Coach Jim Sutherland's Washington State team. They're the kind of a club which can, and undoubtedly will, give the Pacific defense fits all evening.

Then, too, don't forget what happened last week when Jack Larscheid suddenly moved from flanker back to left halfback, subbing for injured Dick Bass, and turned out to be the game's offensive star.

Something like that is newsworthy any Saturday. On Homecoming it becomes almost legendary. There are plenty of good ball players on both sides just sitting and waiting for that nod from the coach which means their chance at glory in the Homecoming game.

Who it will be tonight is a guess. But whoever it is, he'll have a little niche carved for himself in Tiger history not quite like anything else.

And as far as the game goes, our guess is that it'll easily be the most thrill-packed Homecoming contest ever played in Memorial Stadium.

Re-Elect . . . U. S. Senator

Thomas H. Kuchel

He brought instant Federal flood relief to San Joaquin County last December.

He secured Federal aid for San Joaquin School District, with many children and few dollars.

He voted for the soil bank and price supports.

He has helped bring Peace and Prosperity by constantly supporting President Eisenhower.

REPUBLICANS AND DEMOCRATS FOR KUCHEL

Warren H. Atherton and Louis Arbios, Co-Chairmen
Albert Dell Aringa, Chairman Agriculture Com.





ELECT

Bill Biddick

DEMOCRAT

ASSEMBLYMAN

Able
Experienced Leadership



ELECT
ASSEMBLYMAN
JOHN J.

McFALL

(DEMOCRAT)

TO CONGRESS

THE MAN WHO GETS THINGS DONE!

ELECT . . . General
Election
Nov. 6,
1956

RICHMOND

Supervisor

3rd DISTRICT

X Charles
RICHMOND

"ACTION—Not Words"



Success, Tigers

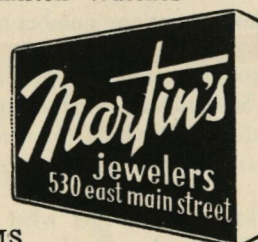
FROM

ALAN SHORT

YOUR

State Senator

IN STOCKTON IT'S
MARTIN'S JEWELERS
For the Finest in Jewelry — Gifts — Watches
Diamonds — Silverware
Home of Elgin, Gruen, Bulova and
Hamilton Watches

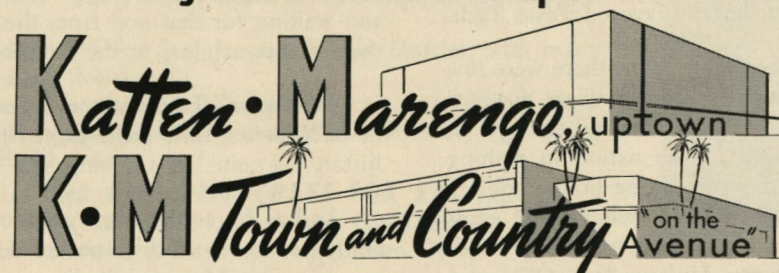


BUDGET TERMS



2105 Pacific Ave. — On the Miracle Mile
FREE PARKING

You Always Score At K & M — Either Uptown or on the Avenue
Tigertown Coed Headquarters



1956 College of the Pacific Football Roster

NO.	NAME	POS.	AGE	HT.	WT.	EXPERIENCE	CLASS	HOME
10	Chuck Filice	QB	20	5-9	165	Hartnell JC	Jr.	Santa Cruz
14	Jim Reynosa*	QB	20	5-9	170	COP-I	Sr.	Stockton
15	Tom Flores	QB	19	6-1	185	Fresno JC	Jr.	Sanger
16	Del Whittier	QB	21	6-0	185	COP-I	Jr.	Oroville
20	Bob Hicks	LH	20	5-11	180	Lassen JC	Jr.	Janesville
22	Dick Bass	LH	19	5-10	185	COP Frosh	Soph.	Vallejo
24	Roger Metoyer	LH	20	5-11	178	El Camino JC	Jr.	Hawthorne
30	Bob Coronado	LH	19	6-2	180	Vallejo JC	Soph	Vallejo
32	Ken Uselton	FB	20	5-11	195	Santa Rosa JC	Jr.	Cloverdale
33	Don Bossert	FB	21	5-11	185	COP-I	Sr.	Lodi
39	Tom Green	FB	21	5-11	190	COP-I	Jr.	Long Beach
41	Jack Larscheid	RH	22	5-6	154	E.C.C. JC	Jr.	Pleasant Hill
42	Joe Golenor	RH	20	6-0	185	COP-I	Jr.	French Gulch
43	Dutch Grose	RH	26	5-10	195	COP-2	Sr.	Lake Worth, Fla.
45	Chuck Chatfield	RH	19	5-11	185	COP-I	Jr.	Sacramento
47	Tom Perry	RH	22	6-1	186	COP-2	Sr.	Oakdale
53	Jim Ingram	C	20	6-2	240	Marin JC	Soph.	San Rafael
54	Jack O'Rourke**	C	20	6-1	207	COP-2	Sr.	Burbank
55	Roland Rutter	C	25	6-2	210	El Camino JC	Jr.	Hawthorne
56	Mich Yamamoto	C	20	6-0	202	COP-I	Jr.	Torrance
60	John Williams	LG	23	5-8	195	COP Frosh	Soph.	Chowchilla
61	Galen Laack**	LG	25	6-0	221	COP-2	Sr.	Abbotsford, Wisc.
63	Floyd Weaver	RG	22	5-11	210	COP-I	Jr.	Stockton
65	Art Mesistrano	LT	19	5-11	240	Stockton College	Soph.	Brooklyn, N. Y.
66	Ben Parks	RG	22	5-8	190	COP-I	Sr.	Hollister
67	Bob Lee**	RG	20	5-11	205	COP-2	Sr.	Concord
68	Tony Ortega	LG	21	5-10	185	COP-I	Sr.	Stockton
70	Bob Sartwell	LT	19	6-0	205	COP Frosh	Soph.	Salinas
71	Ron Smith	LT	22	6-0	205	COP-I	Sr.	Chico
72	Adrian Vera	RT	18	5-10	215	COP Frosh	Soph.	Stockton
73	Joe Nichols	LT	19	6-0	235	COP Frosh	Soph.	Woodland
74	Bill Striegel*	RT	19	6-2	222	COP-I	Jr.	Chico
77	Frank Montabana**	RT	21	6-0	213	COP-2	Sr.	San Francisco
78	John Nisby**	LT	20	5-11	230	COP-2	Sr.	Stockton
79	J. D. Leitaker	RT	24	6-1	230	COP-I	Jr.	Susanville
80	Lee Allerdice	LE	24	5-9	180	Pasadena CC	Soph.	Snohomish, Wash.
82	Matt Russell	RE	23	6-3	215	San Francisco CC	Soph.	San Francisco
83	George Lane	LE	22	6-3	220	COP-I	Jr.	Los Banos
84	Ken Cornell	RE	20	6-0	190	COP-I	Sr.	Inglewood
85	Pete Wallace	LE	23	6-0	185	Service	Soph.	Pasadena
86	Bob Denton	RE	21	6-4	224	Stockton College	Soph.	Stockton
88	Farrell Funston*	LE	20	6-1	212	COP-I	Jr.	Dixon

* No. letters won.



Homecoming '56

Tonight we welcome a number of the leading high school bands of the Central Valley area. In a way they too celebrate "Homecoming", for many of them have been represented here for each of our festivals since they began in 1950. The bands participate and compete in the parade and then present "en masse" a colorful half-time spectacle.

The music for tonight's half-time show is:

"SPIRIT OF 76" by Jack Murphy

"THE LITTLE GIANT" by Moon

"PACIFIC HAIL" by Lois Warner Winston

Our guests this evening are:

JACKSON UNION HIGH SCHOOL Paul Slattery, <i>director</i>	ACALANES UNION HIGH SCHOOL Richard Hansen, <i>director</i>
LIVERMORE JOINT UNION HIGH SCHOOL Gordon Mallory, <i>director</i>	LINDEN UNION HIGH SCHOOL Robert Corra, <i>director</i>
MANTECA UNION HIGH SCHOOL Leroy Darling, <i>director</i>	ELK GROVE UNION HIGH SCHOOL Milton Dick, <i>director</i>
FRANKLIN HIGH SCHOOL (Stockton) Eugene Lancelle, <i>director</i>	AMADOR COUNTY HIGH SCHOOL (Sutter Creek) Robert Smith, <i>director</i>
SONORA UNION HIGH SCHOOL John Gottschalk, <i>director</i>	RIPON UNION HIGH SCHOOL Vincent Delamarter, <i>director</i>
ORESTINBA UNION HIGH SCHOOL (Newman) Leland Silver, <i>director</i>	LODI UNION HIGH SCHOOL Sydney Halsey, <i>director</i>
ESCALON HIGH SCHOOL Paul Lutz, <i>director</i>	GALT HIGH SCHOOL Lawrence Littleton, <i>director</i>
LIVINGSTON HIGH SCHOOL Joseph Guthrie, <i>director</i>	GUSTINE UNION HIGH SCHOOL W. Emil Harris, <i>director</i>
MADERA UNION HIGH SCHOOL Allen Harkins, <i>director</i>	EDISON HIGH SCHOOL (Stockton) Albert Leach, <i>director</i>
NEVADA UNION HIGH SCHOOL (Grass Valley) George Peavy, <i>director</i>	LAS LOMAS HIGH SCHOOL Gordon Gibson, <i>director</i>
HUGHSON UNION HIGH SCHOOL Grover Rodich, <i>director</i>	NAPA JUNIOR COLLEGE Clayton Long, <i>director</i>

1956 COLLEGE OF PACIFIC STATISTICS - 5 GAMES

Individual

RUSHING						
PLAYER AND POS.	G	TCB	TYG	YL	NET	AVG.
Dick Bass, lh.....	5	62	493	29	464	7.5
Tom Green, fb.....	5	53	204	4	200	3.8
Ken Uselton, fb.....	4	17	91	0	91	5.8
Bob Hicks, lh.....	4	14	59	1	58	4.1
Roger Metoyer, lh.....	4	10	40	0	40	4.0
Jack Larscheid, rh.....	5	11	35	4	31	2.8
Don Bossert, fb.....	3	8	34	7	27	3.4
Tom Flores, qb.....	5	19	55	31	24	1.3
Dutch Grose, rh.....	5	8	23	0	23	2.9
Bob Coronado, lh.....	2	5	11	0	11	2.2
Jim Reynosa, qb.....	5	17	36	27	9	.5
Chuck Filice, qb.....	2	4	6	1	5	1.2
Bob Denton, re.....	5	1	0	13	-13	-13.0
Del Whittier, qb.....	3	6	8	32	-24	-6.0

PASSING						
PLAYER AND POSITION	ATT.	COMP.	INT.	YARDS	PCT.	TD
Tom Flores, qb.....	47	28	2	385	.596	4
Jim Reynosa, qb.....	45	22	1	322	.489	1
Del Whittier, qb.....	11	7	0	97	.636	0

PASS RECEIVING			
PLAYER AND POSITION	No.	YARDS	TD
Farrell Funston, le.....	14	316	3
Jack Larscheid, rh.....	7	85	0
Dick Bass, lh.....	7	78	0
Pete Wallace, le.....	5	84	0
Bob Denton, re.....	5	70	2
Tom Perry, rh.....	5	32	0
Chuck Chatfield, rh.....	3	43	0
Lee Allerdice, le.....	3	36	0
Bob Hicks, lh.....	3	21	0
Bob Coronado, lh.....	2	25	0
Roger Metoyer, lh.....	2	8	0
Matt Russell, re.....	1	10	0

PUNT RETURNS			
PLAYER AND POSITION	No.	YARDS	AVG.
Jack Larscheid, rh.....	2	61	30.5
Dick Bass, lh.....	8	123	15.4
Roger Metoyer, lh.....	3	18	6.0
Bob Hicks, lh.....	1	2	2.0

KICKOFF RETURNS			
PLAYER AND POSITION	No.	YARDS	AVG.
Bob Coronado, lh.....	1	27	27.0
Dick Bass, lh.....	4	86	21.5
Tom Perry, rh.....	5	78	15.5
Jack Larscheid, rh.....	2	29	14.5
Farrell Funston, le.....	1	9	9.0
Pete Wallace, le.....	1	6	6.0

PUNTING			
PLAYER AND POSITION	No.	YARDS	AVG.
Bob Denton, re.....	10	402	40.2
Lee Allerdice, le.....	4	158	39.5
Pete Wallace, le.....	5	197	39.4
Tom Flores, qb.....	2	62	31.0
Jim Reynosa, qb.....	3	63	21.0

INTERCEPTION RETURNS		
PLAYER AND POSITION	No.	YARDS
Dick Bass, lh.....	2	33
Dutch Grose, rh.....	2	32
Farrell Funston, le.....	2	14
Tom Flores, qb.....	2	3
Bob Hicks, lh.....	2	0
Roger Metoyer, lh.....	1	25
Jim Reynosa, qb.....	1	17
Bob Coronado, lh.....	1	4
Floyd Weaver, rg.....	1	2

SCORING

PLAYER AND POSITION	TD	P.A.T.	POINTS
Dick Bass, lh.....	5		30
Tom Green, fb.....	1	15/14	20
Farrell Funston, le.....	3		18
Tom Flores, qb.....	3		18
Bob Denton, re.....	2		12
Jim Reynosa, qb.....	1		6
Del Whittier, qb.....	1		6
Roger Metoyer, lh.....	1		6
Jack Larscheid, rh.....	1		6
Bob Hicks, lh.....	1		6
Ken Uselton, fb.....	1		6
Dutch Grose, rh.....		1/1	1
Pete Wallace, le.....		1/1	1

Team

OFFENSIVE

	PACIFIC	OPPONENTS
Times Carried the Ball.....	243	231
Total Yards Gained Rushing.....	1093	965
Yards Lost Rushing.....	178	175
Net Yards Gained Rushing.....	915	790
Passes Attempted.....	103	81
Passes Completed.....	57	30
Passes Had Intercepted.....	3	14
Net Yards Gained Passing.....	804	448
Total Offensive Plays.....	366	312
Net Yards Gained Total Offense.....	1719	1238
First Downs Rushing.....	44	42
First Downs Passing.....	34	23
First Downs Penalties.....	5	5
Total First Downs.....	83	70
Times Punted.....	24	25
Total Yards Punted.....	881	863
Average Yards Per Punt.....	36.7	34.5
Punt Returns.....	14	13
Total Yards Punt Returns.....	204	125
Kickoff Returns.....	14	26
Total Yards Kickoff Returns.....	255	441
Number of Penalties.....	37	25
Total Yards Penalized.....	368	264
Number of Fumbles.....	14	18
Own Fumbles Recovered.....	5	10
Number of Touchdowns.....	20	11
Number of Conversions.....	16	8
Total Points Scored.....	136	76
Total Attendance.....	82,100	

DEFENSIVE

PLAYER AND POS.	Tac.	Ass.	R.F.	P.B.U.	P.I.	K.B.	Points
Galen Laack, lg.....	31	16	0	1	0	0	112
John Nisby, lt.....	27	14	1	3	0	0	109
Bill Striegel, rt.....	24	11	0	1	0	0	86
Bob Lee, rg.....	17	18	1	0	0	0	74
Dick Bass, lh.....	11	17	1	2	2	0	66
Jack O'Rourke, c.....	15	17	0	1	0	0	65
Farrell Funston, le.....	13	7	0	1	2	0	59
Bob Denton, re.....	16	8	0	1	0	0	57

—only players averaging 10 points per game carried—

(Note: Points are given thus—3 for a tackle, 1 for an assist, 5 for a recovered fumble, 3 for a pass broken up, 5 for a pass interception and 5 for a kick blocked.)

COLLEGE OF THE PACIFIC

THRILLS — ACTION



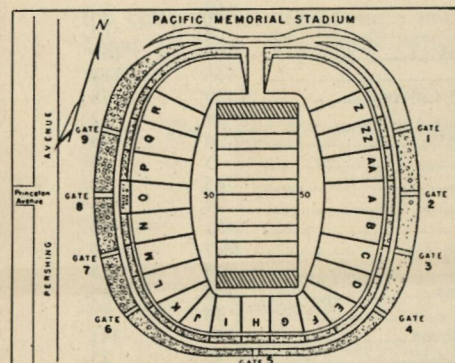
FOLLOW THE TIGERS

'56 Home Schedule

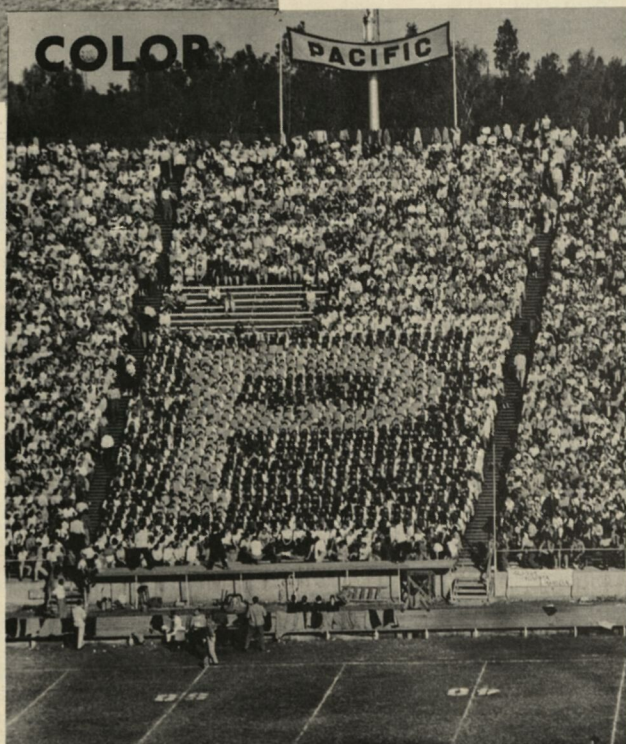
Oct. 27..... Washington State
 Nov. 10..... San Jose State
 Nov. 17..... Hardin-Simmons

All Kickoffs — 8:00 P. M.

Seating Plan



COLOR



NEXT
HOME
GAME —

**SAN JOSE
STATE**
SATURDAY
NOVEMBER
10

Reserved Seats \$3.00
 Unreserved End Zone \$1.50

For Information and Ticket Applications

STOCKTON

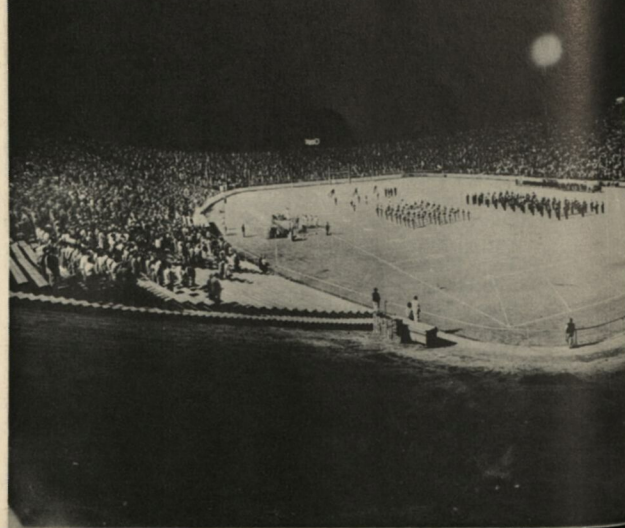
Ward Tyler Sport Shop 145 E. Weber
 College Pharmacy 2353 Pacific Ave.
 Turner Hardware American and Weber
 Chet's Sporting Goods 148 N. Wilson Way
 Moradian's Clothiers 1905 Country Club
 Blaney and Speckens 27 S. El Dorado
 Ernie Reed Clothiers 2105 Pacific Avenue

OTHER COMMUNITIES

Squire Clothiers Hotel Lodi Bldg., Lodi
 Valley Sporting Goods 1418 J St., Modesto
 Manteca Feed & Supply 137 N. Main, Manteca
 Roos Bros. 1001 K St., Sacramento
 Turner Hardware 401 Central, Tracy
 Strand Bros. Hardware Escalon
 The Wardrobe 116 N. Third St., Oakdale
 Hill's Hardware Linden

ATHLETIC TICKET OFFICE — COLLEGE OF THE PACIFIC
 Phone: HOward 4-8129 — Stockton 4, California

PAGEANTRY



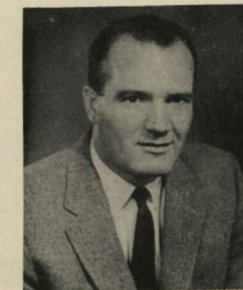
PACIFIC COACHING AND ATHLETIC STAFF



JACK MYERS
 ATHLETIC DIRECTOR AND HEAD COACH



JOHN ROHDE
 ASSISTANT



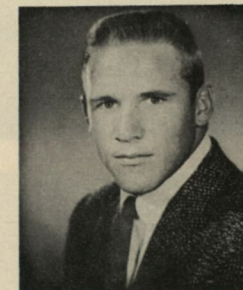
JOHN NIKCEVICH
 LINE



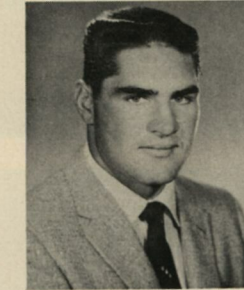
SKIP ROWLAND
 BACKFIELD



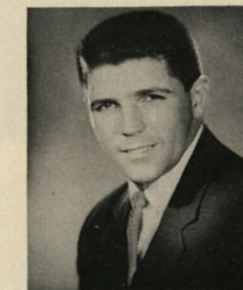
MEL MORETTI
 TRAINER



KEN SWEARINGEN
 GRADUATE ASSISTANT



NEVEN HULSEY
 GRADUATE ASSISTANT



BOB MARON
 GRADUATE ASSISTANT



DR. JOHN BLINN, JR.
 PHYSICIAN



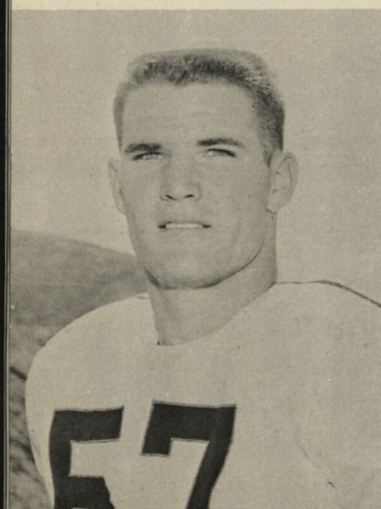
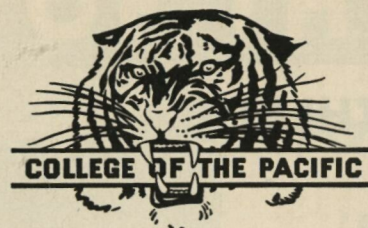
VAN SWEET
 STADIUM MANAGER



MARJORIE POWELL
 TICKET MANAGER



CARROLL R. DOTY
 NEWS DIRECTOR



TOM PERRY



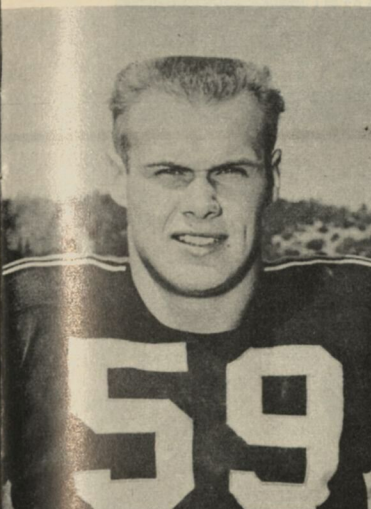
JOHN NISBY



TOM GREEN



DEL WHITTIER



FARRELL FUNSTON



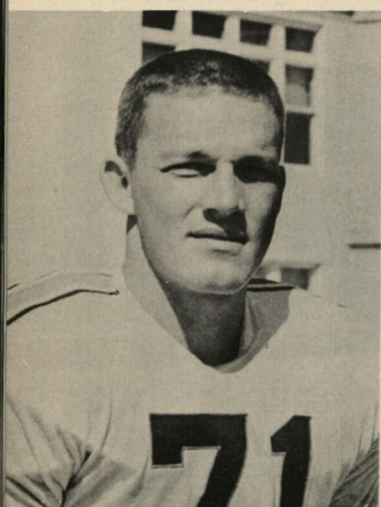
JIM REYNOSA



JACK O'ROURKE



BILL STRIEGEL



GALEN LAACK



DUTCH GROSE



BOB LEE



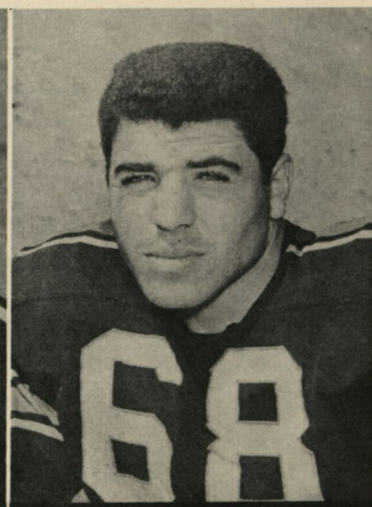
TOM FLORES



DON BOSSERT



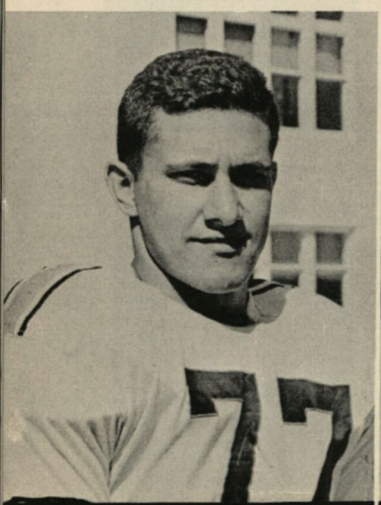
KEN CORNELL



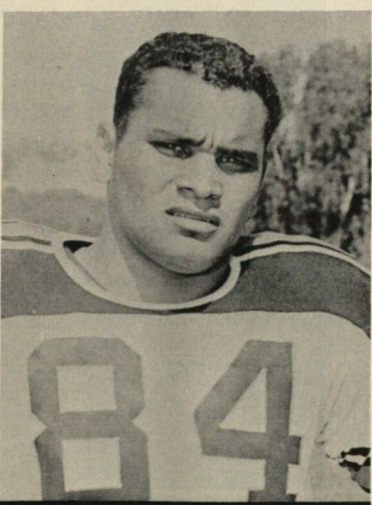
TONY ORTEGA



GENE PETERSON



FRANK MONTABANA



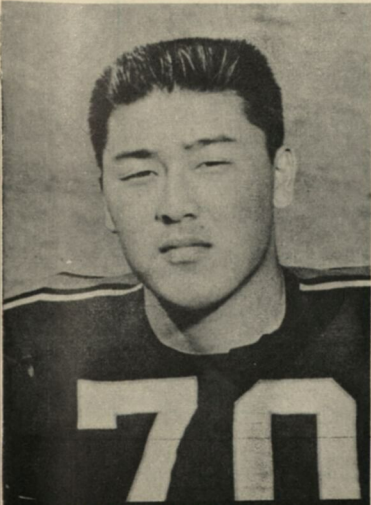
FLOYD WEAVER



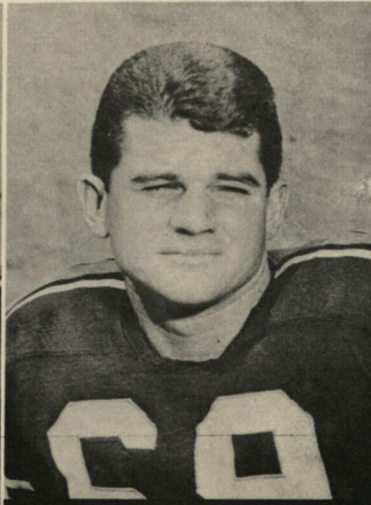
KEN USELTON



ROLAND RUTTER



MICH YAMAMOTO



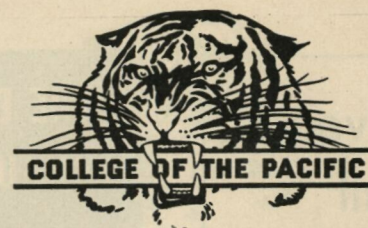
RON SMITH



CHUCK CHATFIELD



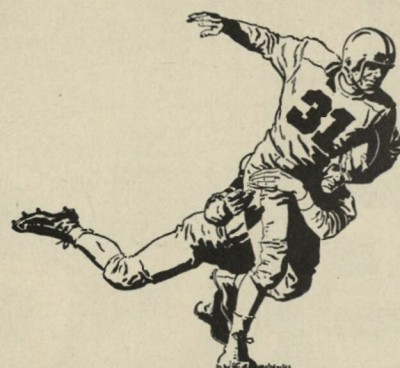
BEN PARKS



The **TIGERS** Give You
Good Football
LB Builders, Inc., Give You
Good Homes

In
Fraser
MANOR
Drive West on Country Club Blvd.
to FRASER MANOR
Telephone HO 5-0328

THE ELECTRIC SPORTS TIMER
USED IN THIS GAME
IS ANOTHER
FLYING  SERVICE



TIDEWATER OIL COMPANY

PLAY BALL WITH "FLYING A"

ATWOOD PRINTING COMPANY

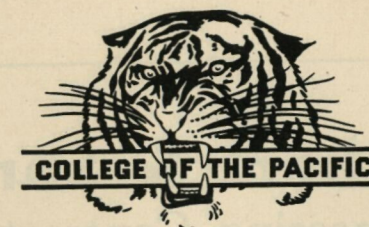
SINCE 1882

Printers - Lithographers

157 West Adams Street

Phone HOward 6-6761

Stockton, California



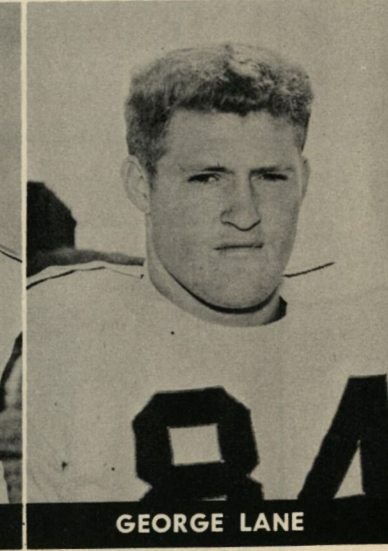
BOB DENTON



DICK BASS



ART MESISTRANO



GEORGE LANE



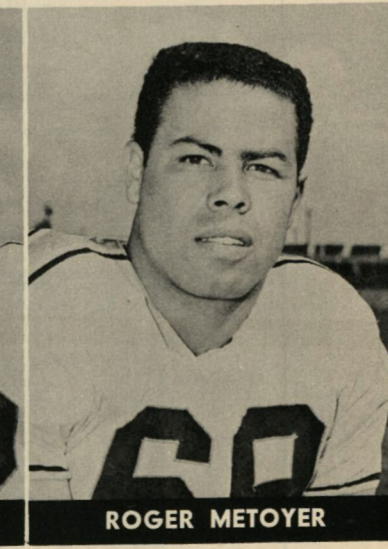
JACK LARSCHIED



ADRIAN VERA



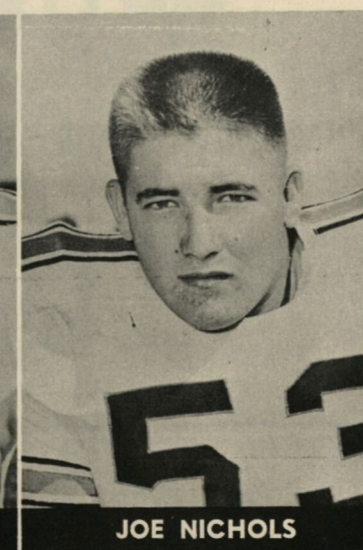
BOB SARTWELL



ROGER METOYER



MATT RUSSELL



JOE NICHOLS



JOHN WILLIAMS



J. D. LEITAKER

Pacific Memorial Stadium Single Game Records

TEAM

MOST TOTAL PLAYS
106, Loyola, 1950

MOST NET YARDS TOTAL OFFENSE
528, Pacific (vs. Colorado A & M), 1956

MOST TIMES CARRIED BALL
83, Pacific (vs. Hardin-Simmons), 1951

MOST TOTAL YARDS RUSHING
436, Pacific (vs. Hardin-Simmons), 1951

MOST YARDS LOST RUSHING
82, Santa Clara, 1952

MOST NET YARDS RUSHING
404, Pacific (vs. Hardin-Simmons), 1951

MOST PASSES ATTEMPTED
51, Loyola, 1950

MOST PASSES COMPLETED
26, Loyola, 1950

MOST PASSES HAD INTERCEPTED
4, Boston U., 1950
4, Quantico Marines, 1950
4, Oregon, 1951
4, Pacific (vs. USF), 1951
4, Pacific (vs. Marquette), 1952
4, Idaho, 1954

MOST YARDS GAINED PASSING
343, Loyola, 1950

MOST SCORING PASSES
4, Pacific (vs. Texas Tech), 1952

MOST FIRST DOWNS RUSHING
23, Pacific (vs. Loyola), 1951

MOST FIRST DOWNS PASSING
15, Loyola, 1950

MOST FIRST DOWNS PENALTIES
3, Pacific (vs. San Jose State), 1950

MOST TOTAL FIRST DOWNS
26, Loyola, 1950
26, Pacific (vs. Loyola), 1951
26, Pacific (vs. Colorado A & M), 1956

MOST PENALTIES
13, Pacific (vs. San Jose State), 1950
13, Washington State, 1953

MOST YARDS PENALIZED
123, Pacific (vs. San Jose State), 1950

MOST FUMBLES
9, Pacific (vs. Hawaii), 1953
9, Stanford, 1954

MOST BALLS LOST FUMBLING
5, Pacific (vs. USF), 1951
5, Pacific (vs. Hawaii), 1953
5, Stanford, 1954

MOST NUMBER OF POINTS SCORED
55, Pacific (vs. Boston U.), 1950

FEWEST NET YARDS TOTAL OFFENSE
88, Hardin-Simmons, 1951

FEWEST TIMES CARRIED BALL
17, Loyola, 1951

FEWEST TOTAL YARDS RUSHING
45, Loyola, 1951

FEWEST YARDS LOST RUSHING
5, Tulsa, 1953

FEWEST NET YARDS RUSHING
22, Santa Clara, 1952

FEWEST PASSES ATTEMPTED
3, Pacific (vs. Texas Tech), 1954

FEWEST PASSES COMPLETED
1, San Jose State, 1950
1, Pacific (vs. Texas Tech), 1954

FEWEST YARDS GAINED PASSING
2, Pacific (vs. Texas Tech), 1954

INDIVIDUAL

MOST TOTAL PLAYS
58, Don Klosterman, Loyola, 1950

MOST NET YARDS TOTAL OFFENSE
325, Don Klosterman, Loyola, 1950

MOST TIMES CARRIED BALL
29, Ollie Matson, USF, 1951

MOST TOTAL YARDS RUSHING
191, Ernie Lindo, Pacific (vs. Texas Tech), 1954

MOST YARDS LOST RUSHING
29, Jim Johnson, Texas Tech, 1954

MOST NET YARDS RUSHING
191, Ernie Lindo, Pacific (vs. Texas Tech), 1954

MOST PASSES ATTEMPTED
51, Don Klosterman, Loyola, 1950

MOST PASSES COMPLETED
26, Don Klosterman, Loyola, 1950

MOST PASSES HAD INTERCEPTED
3, Ed Brown, USF, 1951
3, Tony Geremia, Pacific (vs. USF), 1951
3, Roy Ottoson, Pacific (vs. Marquette), 1952

MOST YARDS GAINED PASSING
343, Don Klosterman, Loyola, 1950

MOST SCORING PASSES
3, Don Klosterman, Loyola, 1951
3, Ed Brown, USF, 1951
3, Roy Ottoson, Pacific (vs. Texas Tech), 1952
3, Bill Jacobs, Pacific (vs. Hawaii), 1953

MOST PASSES CAUGHT
9, Ken Buck, Pacific (vs. Washington State), 1953

MOST YARDS GAINED RECEIVING
107, Fred Snyder, Loyola, 1950

MOST SCORING PASSES CAUGHT
2, Bob St. Clair, USF, 1951
2, Wes Mitchell, Pacific (vs. Texas Tech), 1952
2, Ken Buck, Pacific (vs. Santa Clara), 1952
2, Ken Buck, Pacific (vs. Marquette), 1952
2, Bob Snyder, Fresno State, 1953

MOST TOUCHDOWNS SCORED
5, Eddie Macon, Pacific (vs. Denver), 1951

MOST POINTS SCORED
30, Eddie Macon, Pacific (vs. Denver), 1951

MOST CONVERSIONS ATTEMPTED
6, Rod DeCristofaro, Pacific (vs. Loyola), 1951
6, Ed Brown, USF, 1951
6, Rod DeCristofaro, Pacific (vs. Texas Tech), 1952

MOST CONVERSIONS MADE
6, Rod DeCristofaro, Pacific (vs. Texas Tech), 1952

LONGEST RUN FROM SCRIMMAGE
76, Ernie Lindo, Pacific (vs. Texas Tech), 1954
76, Ken Swearingen, Pacific (vs. Washington State), 1955

LONGEST PUNT RETURN
100, Eddie Macon, Pacific (vs. Boston U.), 1950

LONGEST KICKOFF RETURN
50, Neil Ferris, Loyola, 1950

LONGEST PASS INTERCEPTION RETURN
85, Jim Andrews, Hardin-Simmons, 1951

LONGEST PASS COMPLETION
77, Klosterman-to-Zoleski, Loyola, 1951

LONGEST PUNT
82, Ronnie Knox, UCLA, 1955

Richmond-Chase Co.

— Cannery of —

HEART'S DELIGHT — DIET DELIGHT
FRUITS AND VEGETABLES

•

Apricot Nectar — Peach Nectar
Pear Nectar

Fruit Nectars — The Popular Food Drink

•

Main Office — San Jose, P. O. Box 1030
Stockton Office — A St. and E. Weber Ave.

WE HOPE YOU

Enjoy

THE GAME
AND

Serve

GARDEN BASKET

FRUITS and VEGETABLES

for savory dishes

B-C BREAKFAST COCKTAIL

VITAMIN "C" ENRICHED

THORNTON CANNING CO.

THORNTON, CALIFORNIA

Mor-Pak Preserving Corp.

E. FREMONT ST. — STOCKTON

Packers of

AUNT MARY'S

Fancy Elberta Peaches

Fancy Kadota Figs

Fancy Whole Peeled Apricots

— and —

BLAZE O'GOLD and DELHI BRANDS

Wood Canning Co.

Canners of

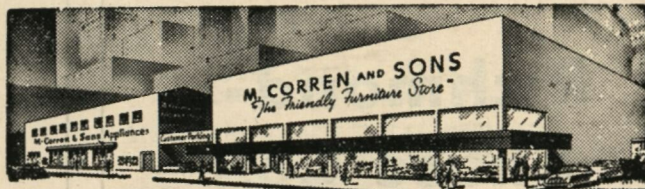
CALIFORNIA FRUITS
AND VEGETABLES

•

Telephone HO 5-0291

•

Filbert and Miner Avenue
Stockton, California



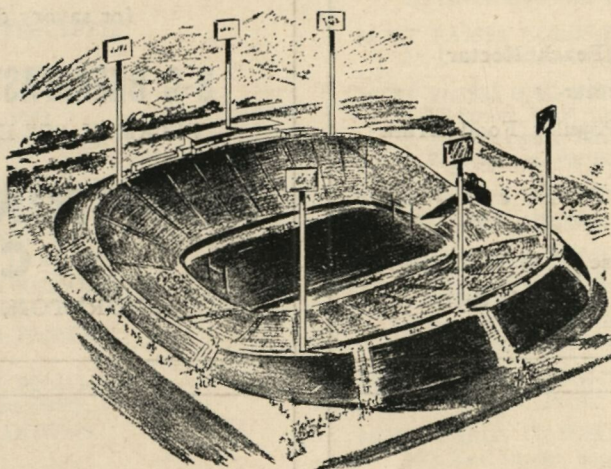
"For 50 Years A Stockton Tradition"

STOCKTON'S LARGEST SELECTION
Furniture — Floor Covering
Bedding — Appliances

Free Parking Next Door To Store

120-136 S. San Joaquin Street

Tel. HO 6-4033



SHEPHERD & GREEN BUILDERS

TELEPHONE HO 6-5177 — AMERICAN TRUST BUILDING — STOCKTON

Stationers
Office Equippers

Kendall's
INC.

Gifts — Greeting Cards
Party Favors
Commercial Stationers
Office Equipment

★
Telephone HO 6-6877

★
430 E. Weber Ave.

Stockton