



10-20-1956

October 20, 1956 Football Program, UOP vs. Marquette University

Marquette University

Follow this and additional works at: <https://scholarlycommons.pacific.edu/ua-football>

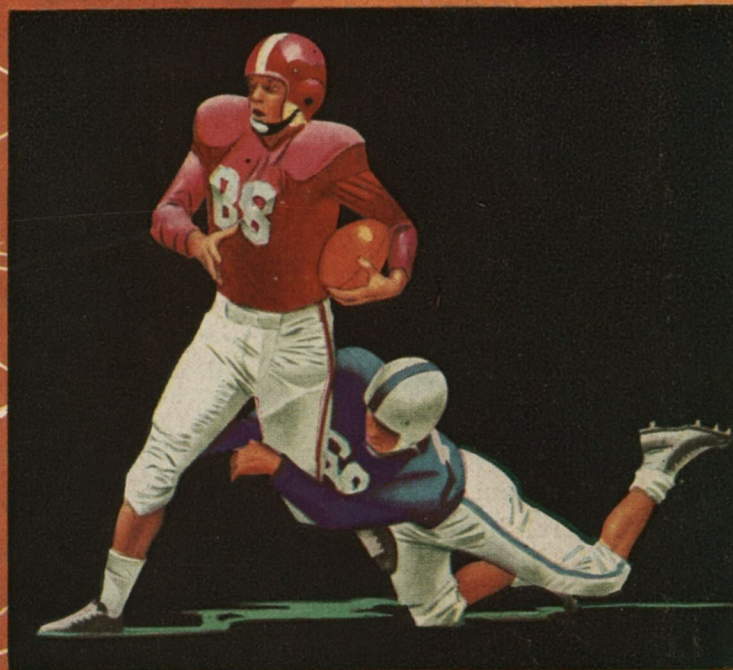
Recommended Citation

Marquette University, "October 20, 1956 Football Program, UOP vs. Marquette University" (1956). *Football*. 240.

<https://scholarlycommons.pacific.edu/ua-football/240>

This Book is brought to you for free and open access by the Athletics at Scholarly Commons. It has been accepted for inclusion in Football by an authorized administrator of Scholarly Commons. For more information, please contact mgibney@pacific.edu.

OFFICIAL PROGRAM • TWENTY-FIVE CENTS



OCTOBER 20, 1956 • MARQUETTE STADIUM

"HOMECOMING"

MARQUETTE COLLEGE OF PACIFIC

Don Nelson

Triple Play on Football for Marquette Fans!

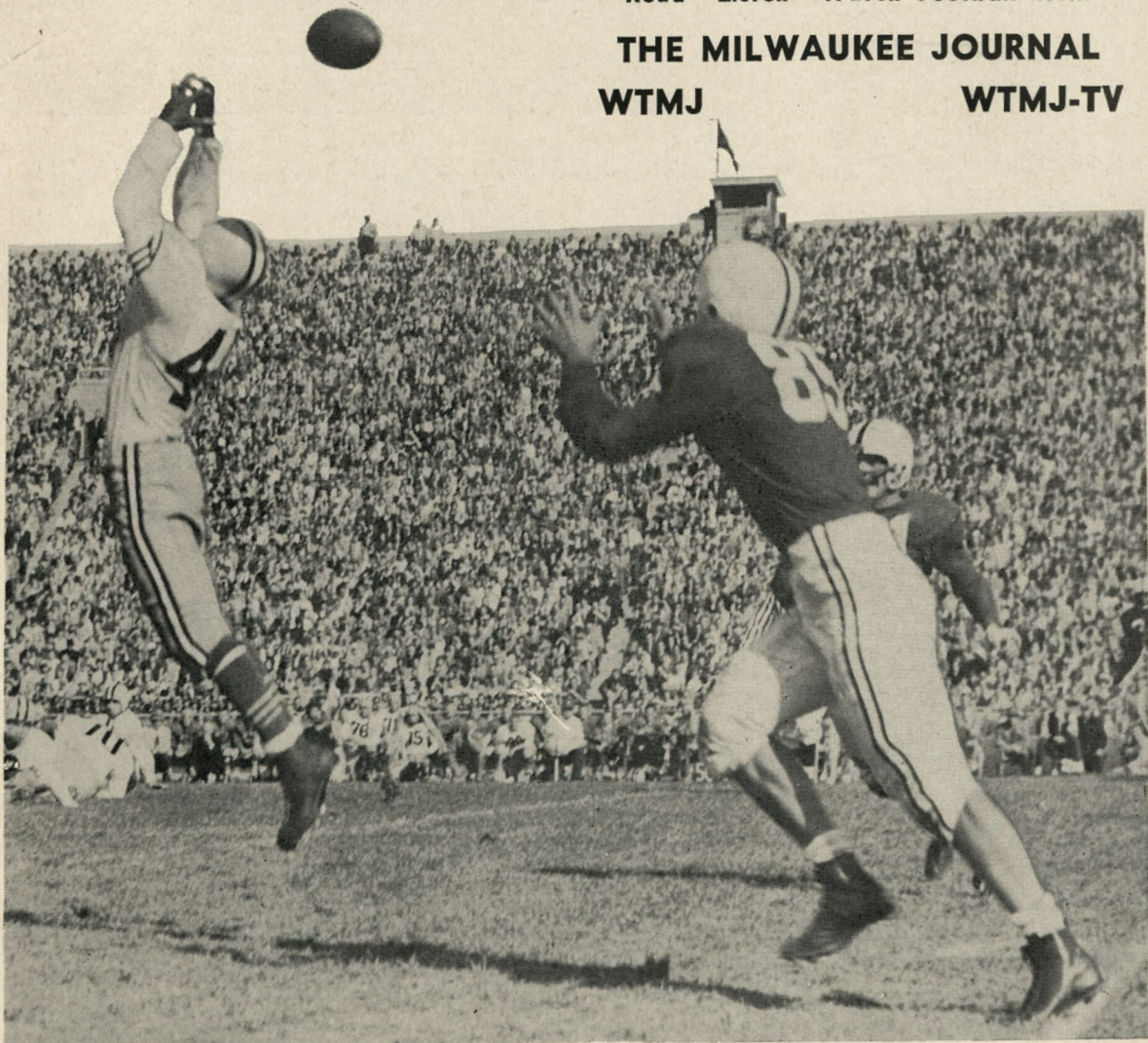
Here's most news by far—most real sport when you *read, listen, watch* football! Enjoy coverage of your favorite teams by Wisconsin's largest sports staff: Marquette by Dick Tharinger; Wisconsin by Oliver Kuechle; Green Bay Packers by Kuechle and Chuck Johnson...

Column comment by Russ Lynch; High school football by Bill Letwin and Bob Pinkowski; State college football by Billy Sixty and Bob Wolf... all yours, in The Milwaukee Journal sports pages and the big, colorful Sunday Men's Section!

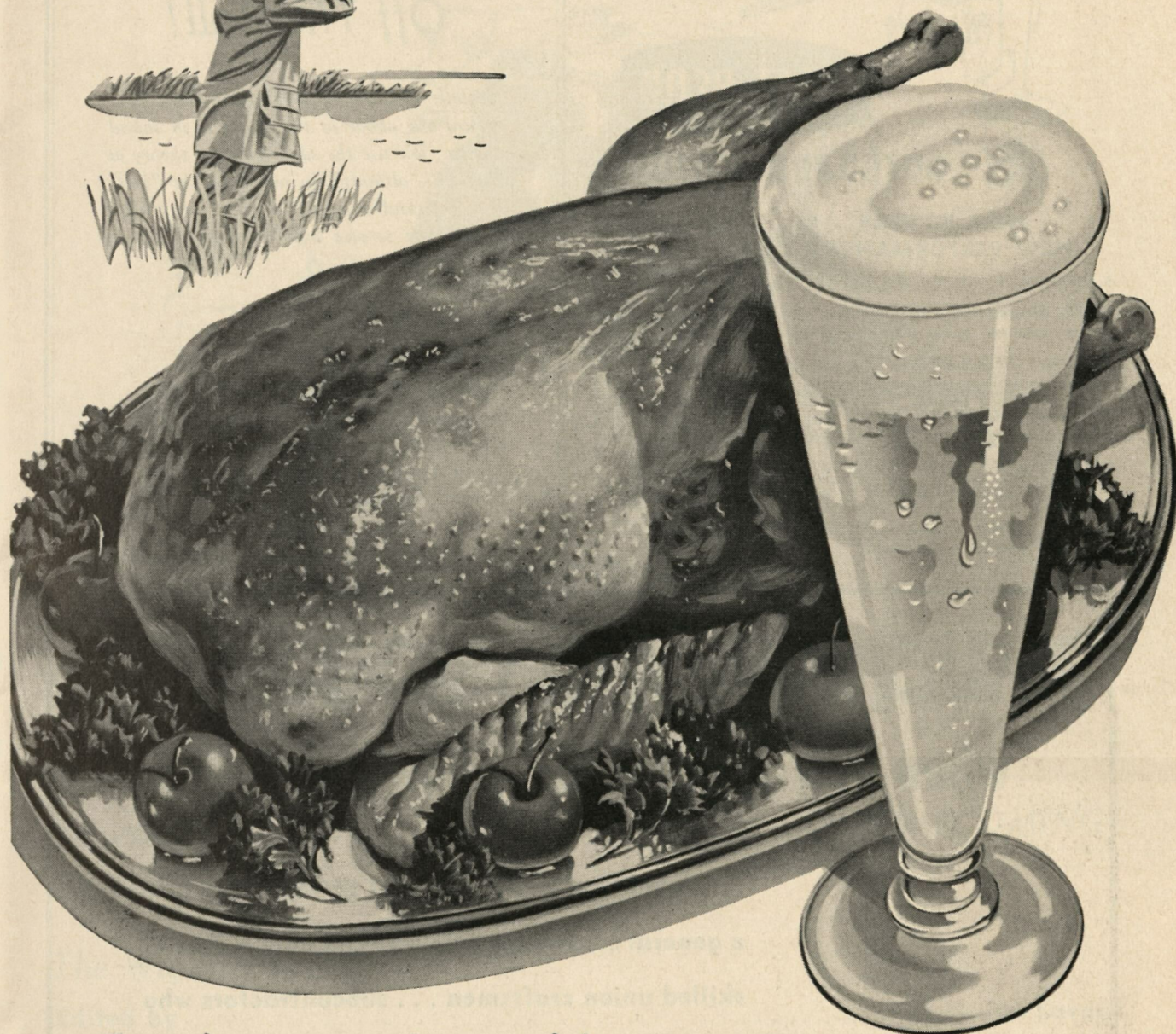
WTMJ RADIO brings you Marquette highlights on daily Sports Flash with Bob Heiss and other regular sports programs; Wisconsin games by Lloyd Pettit and Blaine Walsh; Packer news; Other games and features.

WTMJ-TV TELEVISION brings you Marquette news on daily Sports Picture and other sports programs—Football games of national interest Saturday afternoons on NBC Game of the Week; Other football news and features.

Read — Listen — Watch Football With
THE MILWAUKEE JOURNAL
WTMJ WTMJ-TV

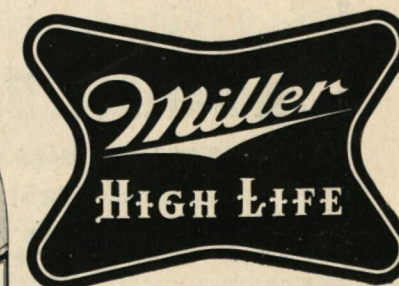


Double-Barreled Pleasure!



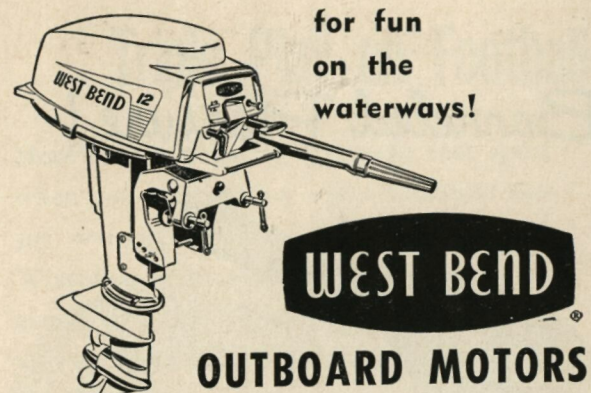
For the taste of your life
... "Go First Class"
with Miller High Life!

THE CHAMPAGNE OF BOTTLE BEER



BREWED AND BOTTLED BY THE MILLER BREWING COMPANY ONLY . . . AND ONLY IN MILWAUKEE, WIS.

© MILLER BREWING CO., MILWAUKEE, WIS.



for fun
on the
waterways!

WEST BEND

OUTBOARD MOTORS

**NEW POWER
NEW PERFORMANCE**

5 MODELS — 30, 12, 7½, 5½ and 2 H.P.

QUIET: Silencers on carburetor and exhaust; "floating" power engine mounting.

EXCLUSIVE FIBERGLASS COVER: Quiets by eliminating resonance; corrosion resistant.

FULL-VIEW DASHBOARD: Sports car styling; shift, starter, choke all on front panel.

EXCLUSIVE LOW LEVEL STARTER: One-hand starting; less pull required.

WEST BEND ALUMINUM CO.
West Bend, Wisconsin



REMOTE CONTROLS
Gear shift and throttle controls available for 5½ h.p. and up.



REMOTE FUEL TANK
Standard equipment on all except 2 h.p. model.

Don't Take Your Eye Off The Ball!

Athletic coaches, in just about every field regard the above as the ultimate in sound advice. We use the same guiding theory at Eugene's, although in our case, the "ball" is compounded of equal parts of quality foods, fine service and economical prices.

Eugene's
JUNEAU

WORLD FAMED RESTAURANT
815 East Wisconsin Avenue
BRoadway 2-0928

You get TOP FLIGHT workmanship when you specify A.F.of L. Craftsmen!

... when you build, remodel or repair *Specify*
a general contractor who employs only A.F.of L.
skilled union craftsmen ... subcontractors who
employ only A.F.of L. skilled union craftsmen.

Milwaukee Building and Construction Trades Council

JOHN ZANCANARO, President
1713 N. 12th St.

Affiliated with A. F. of L.
Phone CONcord 4-4700

THE MARQUETTE WIGWAM

Official Program of Marquette University



versus

COLLEGE OF PACIFIC

Marquette University Stadium
Saturday Afternoon
October 20, 1956

"HOMECOMING"

The Wigwam Is ...

Edited by Jim Savage
in cooperation with The Marquette University News Bureau
and James F. King, Sports Publicity Director
Published by The Marquette University Press
Clifford L. Helbert, business manager
National Advertising Representative Don Spencer Company, Inc.
271 Madison Avenue
New York City



TABLE OF CONTENTS

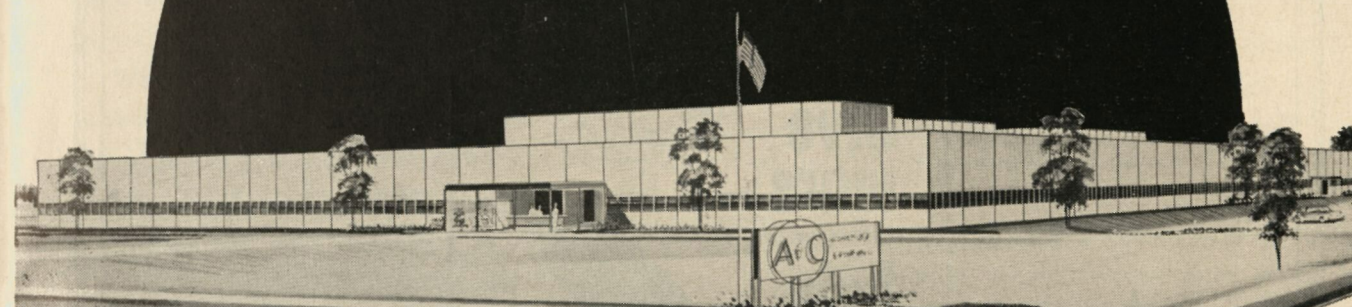
Marquette Meets College of Pacific in Annual Homecoming Game	7
Marquette Athletic Figures	8, 9
Marquette Squad	11
Marquette Coaches	13
The 1956 Warriors	15, 16, 17, 18, 19
1931-32 Team Honored	21
Homecoming Council	21
Marquette Roster	22
Fight Song and Cheers	23
Officials' Signals	opposite 24

Penalties	opposite 25
College of Pacific Roster	26
College of Pacific Athletic Figures	29
College of Pacific Coaching Staff	30
College of Pacific Squad	31
College of Pacific Players	34, 35, 36, 37
Editorial Page	39
1956 Football Rule Changes	39
Marquette History with '56 Opponents . .	41
Marquette Band	44
Marquette Statistics	47

ENGINEERS

AC OFFERS YOU SECURITY

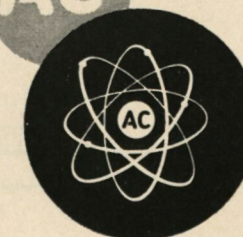
GM's long-standing policy of decentralization creates unlimited opportunities for qualified Electrical, Mechanical Engineers and Engineering Technicians.



DEVOTED TO RESEARCH

AC'S new, modern 225,000 square feet, glass-masonry, aluminum plant (being built in suburban Milwaukee) is another step in GM's Electronics Division's Permanent, Progressive Program.

For a confidential opinion as to how YOU can fit BEST in our Challenging Program write to us today.



AVIONICS — MISSILE GUIDANCE
— JET ENGINE FUEL CONTROLS — COMPUTERS
— COMMUNICATION EQUIPMENT — CIVIL DEFENSE
AVIATION — AUTOMOTIVE ELECTRONIC PRODUCTS

all offer you personally opportunities that demand investigation. To arrange personal, confidential interview in your territory, write today to
Mr. John F. Heffinger,
Supervisor of Salaried Personnel.

AC THE ELECTRONICS DIVISION
General Motors Corporation

Milwaukee 2, Wisconsin

Flint 2, Michigan

MILWAUKEE COUNTY'S UNITED COMMUNITY CHEST CAMPAIGN



October 1 through October 26

Undefeated College of Pacific Tests Warriors In Annual Homecoming Game

by Jim Savage
Wigwam Editor

In this afternoon's Homecoming game, Marquette's still-winless Warriors tackle a tough, undefeated College of Pacific eleven. It is the fifth meeting of the two schools, and should prove to be a series tie-breaker. At the present time, each team has won once, while the 1952 and 1953 games ended in ties.

With many alumni in attendance, spirit is expected to reach a season high, especially after the Warriors' good comeback against Boston College last Saturday. Although losing, 26-19, Marquette was very impressive at times, and showed the home fans a better brand of ball than they had been expecting.

But, alumni or no, it is going to take a great deal more than spirit for the Warriors to pick up their first win of the season.

The College of Pacific squad is big, rough, fast and undefeated (they were tied, 27-27, by Kansas). Coach Johnnie Druze can hardly attribute any of these to his Marquette team.

C.O.P. will outweigh the Warriors by almost 9 pounds per man at the opening kick-off. The Tigers' starting eleven averages close to 205 pounds, the Warriors' 196. In the line, Marquette will give away 15 pounds per man. The Warrior forward wall averages 202 pounds, as compared to the Bengals' 217. The Warriors have a slight weight advantage in the backfield, 185 to 183.

Biggest member of the Pacific starting squad is Tackle John Nisby, who stands just 5 feet, 11 inches, but weighs 230 pounds. Nisby, twice a letter-winner, is said to be the best lineman ever to play at the West Coast school. Last year, as a junior, Nisby earned an all-American honorable mention. Playing on the right side opposite

Nisby is Bill Striegel, a 6 foot, 2 inch, 222-pound junior.

The C.O.P. guards, both double monogram winners, pass the 200-pound mark, also. Left Guard Galen Laack is 6 feet even and 221 pounds. Right Guard Bob Lee is a 5 foot, 11 inch, 205 pounder.

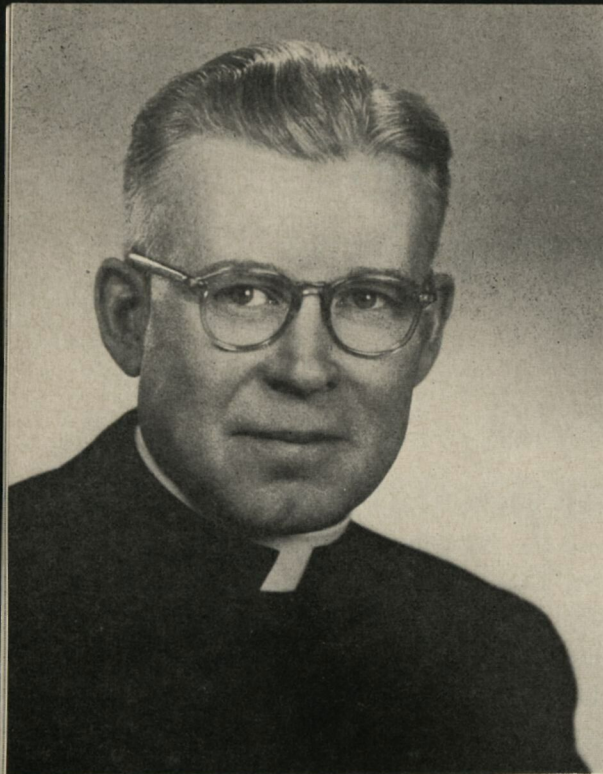
Center Jack O'Rourke, who also has won two letters, is 6 feet, 1 inch, and weighs 207.

The Bengals' ends, too, are good-sized when compared to the Marquette starters. Left End Farrell Funston is 6 feet, 1 inch, and 212 pounds, while Right End Bob Denton is a 6 foot, 4 inch 224 pounder. Denton, a sophomore, is the only lineman who has not won a letter.

In the backfield, the Pacific squad relies more on speed and ability than it does on size. A run-down of the starting backfield looks like this: Quarterback, Jim Reynosa, 5 feet, 9 inches, 170 pounds; left halfback, Dick Bass, 5 feet, 10 inches, 190 pounds; right halfback, Tom Perry, 6 feet, 1 inch, 186 pounds, and fullback, Tom Green, 5 feet, 11 inches, 190 pounds.

If this is not impressive enough, it would be well to note that College of Pacific is loaded with junior college transfers, who become eligible immediately upon entrance. These added to the members of last year's undefeated frosh squad and the varsity holdovers give the Pacific squad depth which many teams readily envy.

It is the computing of these factors which leaves little reason to believe that Marquette will win today's game. However, should the Warriors win, they will delay the assurance of a losing season. A loss today would eliminate any mathematical possibility of a winning season for Druze and his staff, for it would be their fifth loss, and only four games remain after this afternoon's contest.



Very Rev. Edward J. O'Donnell, S.J.
President, Marquette University

The Top Five Men In Marquette Football . . .



Stan Lowe
Athletic Business Manager



Johnnie Druze
Head Football Coach

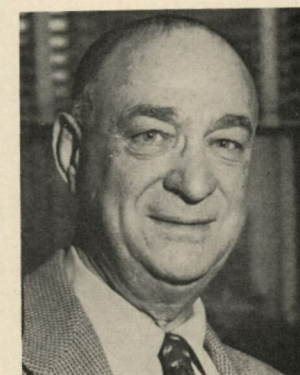


Larry A. "Moon" Mullins
Athletic Director



Rev. John G. Holbrook, S.J.
Chairman, Athletic Board

... And The Many People Behind Them



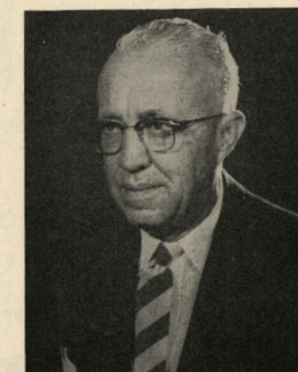
Conrad M. Jennings
Athletic Director Emeritus



Dr. Charles R. Eichenberger
Team Physician



James F. King
Athletic Publicity Director



Roy J. Daly
Director, Ticket Sales



Robert E. Weingart
Team Trainer



David E. Barnes
Public Address Announcer



Frank Hinek
Equipment Manager



John Ernst Cafe

YOUR GOAL "After the Game"

Chicken and Steak Dinners
Sea Foods

Deliciously Prepared After-Game
Snacks and Sandwiches

CORNER E. OGDEN & N. JACKSON



...the Joy look

Endorsed College Apparel

Thanks to Sisson's exclusive College Advisory Board where undergraduates actually pick the style they want.

NORTH WATER
Step South of E. Wisconsin



**H. F. HAESSLER
HARDWARE CO.**

•

414 East Mason Street

**Football
Weather**



**NEW for you ...
right for FALL**

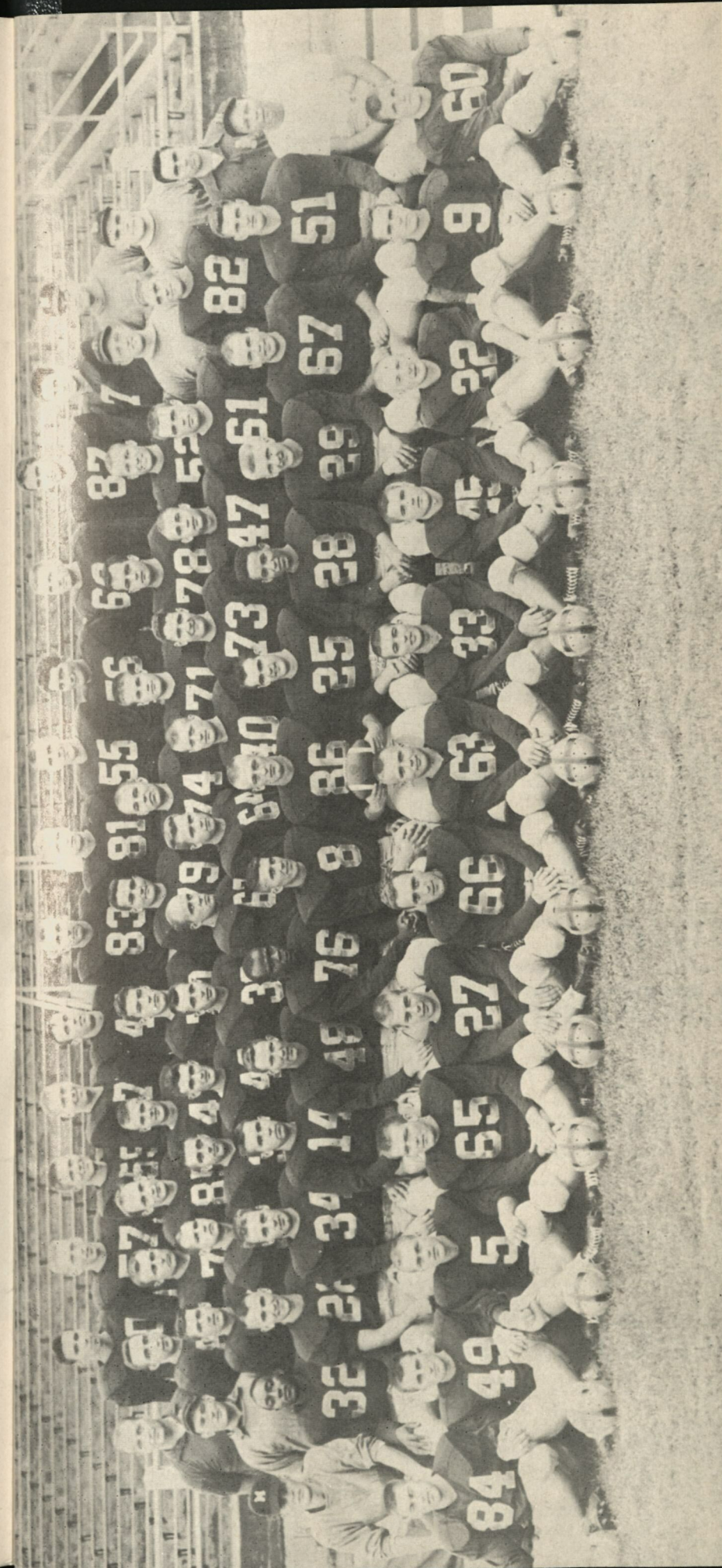
Massagic
Air Cushion Shoes

Get in step with this brisk new season,
in a fresh new pair of Massagics . . .
the shoes that are styled to set the
STYLE. Come in, today!

CHARLES STRAUSS

Weyenberg Shoes for Men

Bankers Building **214 East Wisconsin Avenue**
For Your Convenience, Open Monday and Thursday Evenings



The 1956 Marquette Football Warriors

FRONT ROW (left to right): Jerry Ulrich, Tom Flaherty, Frank Phelps, Mike Kirby, James Aehl, Mike Doyle, Bert Kuptz, Ron Fieber, Cornelius Adams, Dan Van Lannen, Bob O'Connor, Bill O'Connell.

SECOND ROW (left to right): Freshman Coach John McGee, Al Robinson, Ernie Safran, Jim Surane, Pat Gallagher, Dick Brock, Ted Mack, Larry Foster, Art Katula, Mike Bansley, Marvin Bandy, Mike Santor, Ray Dwyer, Gil Sedor, Head Coach Johnnie Druze.

THIRD ROW (left to right): Backfield Coach George Dickson, Jere Carmody, Lee Hermesen, Phil Johnson, Bob Sheridan, Ralph Dorsch, Bill Patch, John Topercer,

Terry Ward, Dick Maierle, Tom Szama, Bill Clancy, John Christman, Equipment Manager Frank Hinek.

FOURTH ROW (left to right): Trainer Bob Weingart, Bob Wallish, John Meehan, George Knecht, John Cornell, Dennis Hebson, Ramon Gomez, Russ Hackert, John Seliskar, Al Guira, Dick Campbell, Tackle and End Coach Ed Mieszkowski, Defensive Coach Fred Wallner.

BACK ROW (left to right): Tony Mixan, Dick Allie, Terry Dineen, Don Walsh, John Whiting, Jim Stracka, Jack Stapleton, Ken Kuhs, Dominic Cuccinello, George Gusick, John Nolan, Joe Coviello, Center and Guard Coach Frank Johnston.

Lightweight... rugged performer!



SYLVANIA[®] *Big Screen* PORTABLE TV

brings in best possible pictures
anywhere you take it!

Famous Sylvania dependability and performance now can be yours in portable TV! The new Sylvania Fiesta is compact—only 13 7/8" wide—weighs only 28 lbs. Equipped with a special filter to keep out glare and reflection.

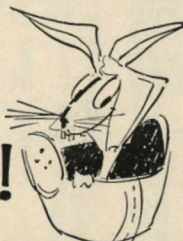


The FIESTA

Your choice of 3 color combinations.

Big Screen Sylvania Portable TV
priced from only \$119.95*

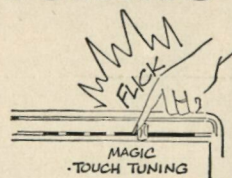
*Manufacturer's suggested price

New magic!  New Low prices!

SYLVANIA TV *"Cabinet of Light"* WITH MAGIC TOUCH TUNING

Magic at your fingertips!

Sylvania's new Magic Touch Tuning lets you select up to 3 channels at a touch. Ask for a demonstration.



Magic for your eyes!

HaloLight[®] eliminates the harsh contrast between bright picture and dark frame—makes TV easy on your eyes!



The WARWICK

New Cabinet of Light TV features HaloLight[®] and Magic Touch Tuning. Your choice of finishes.

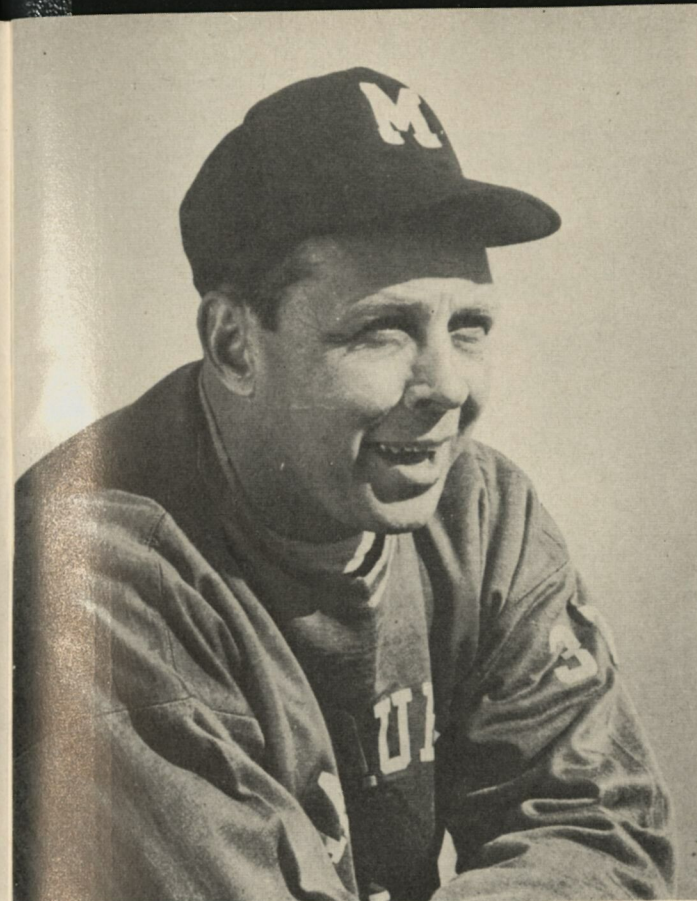
NEXT BEST THING TO SEEING IT IN PERSON—SEE IT ON SYLVANIA TV NOW AT—

JOE FRANECKI APPLIANCE

2929 South 13th Street

Open Every Night to 9:00 p.m.

EVERgreen 3-3990



JOHNNIE DRUZE
Head Coach

Head Coach Johnnie Druze, former Fordham great, comes to the Marquette campus after 12 years as assistant coach at Notre Dame. Previously, he had been an assistant to Frank Leahy at Boston College, and moved to Notre Dame when Leahy accepted the head coaching job there in 1941. In 14 seasons as an assistant, teams with which Druze has been associated have compiled an over all record of 108 wins, 13 losses and six ties.

Backfield Coach George Dickson comes to Marquette from the University of Dayton. A 1950 graduate of Notre Dame, Dickson has coached two years on the West coast, one year as an assistant to Hugh DeVore at New York University, and one year as backfield coach at Mt. Carmel High in Chicago.

Guard and Center Coach Frank Johnston is the youngest member of the staff at 26. Johnston was graduated from

THE NEW MARQUETTE COACHING STAFF

Notre Dame in 1954. In 1953, when Terry Brennan was N.D. freshman coach, undergraduate Johnston was Brennan's assistant. In 1954 he was named freshman coach at N.D.

Edward Mieszkowski, tackle and end coach, is the giant of the staff at 6 feet, 5 inches and 240 pounds. Mieszkowski, a 1946 graduate of Notre Dame, served as assistant coach at Chicago Mt. Carmel High from 1948 to 1953, when he was appointed head coach.

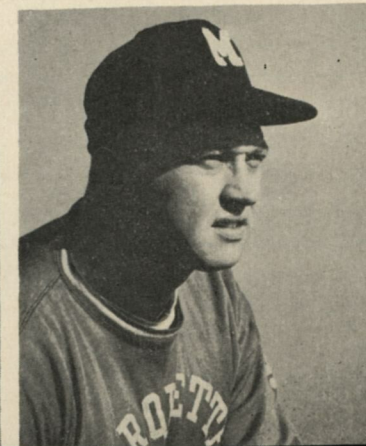
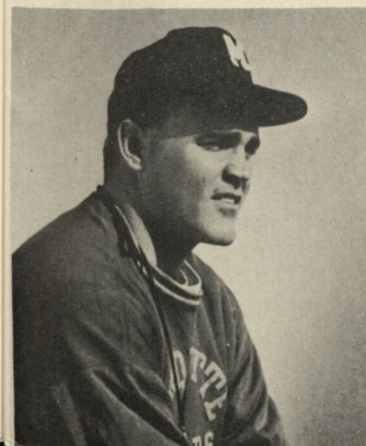
Defensive Coach Fred Wallner steps out of the pro ranks into his first coaching job. Following his graduation from Notre Dame in 1951, he starred for two seasons with the Chicago Cardinals before entering the service. He returned to the Cardinals in 1954 and played until the end of last season. His last football game was played in the annual East-West pro game in January.

Fred Wallner
Defensive Coach

Edward Mieszkowski
Tackle and End Coach

George Dickson
Backfield Coach

Frank Johnston
Guard and Center Coach



QUALITY ATHLETIC EQUIPMENT FOR 75 YEARS

— We Feature Only Nationally Known Athletic Equipment —

Exclusive Distributors for
RAWLINGS ATHLETIC GOODS

"Sports for
All"



"All for
Sports"

Best Wishes from

**SCHROEDER
HOTELS**

**Good Luck
Marquette!**

"Pete" Gebhardt

**O'CONNOR
Sporting Goods Co.**

Distributors for
A. G. Spalding & Bros.
410 East Wells Street Broadway 2-1746

FRED USINGER, INC.

Fine Sausage
since 1880
MILWAUKEE WISCONSIN

WORDEN-ALLEN COMPANY

STRUCTURAL STEEL FABRICATORS

Milwaukee, Wisconsin

THE 1956 WARRIORS



James Stracka, End



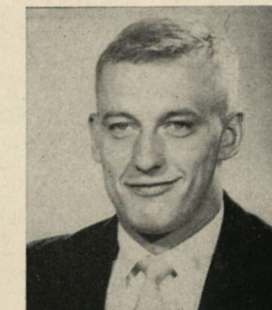
William Clancy, Guard



Raymond Dwyer, Guard



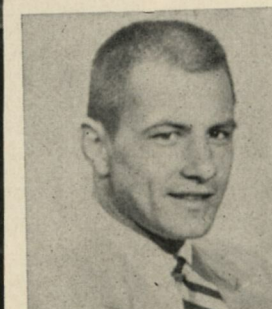
James Surane, Fullback



Arthur Katula, End



Richard Campbell, Center



Lee Hermesen, Halfback



Jere Carmody, Quarterback



John Whiting, Halfback

THE 1956 WARRIORS



Robert Wallish, End



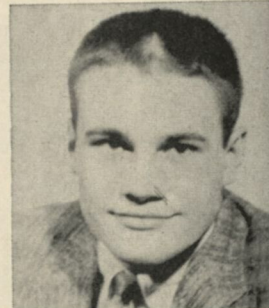
John Stapleton, End



Gilbert Sedor, Center



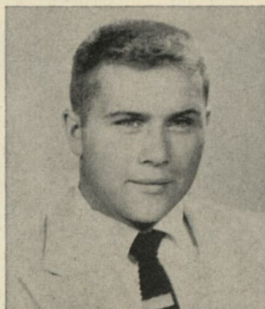
George Gusick, Guard



John Seliskar, Tackle



Terrence Ward, Halfback



John Topercer, Guard

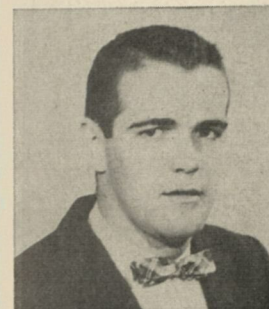


Alonzo Robinson, Fullback



Thomas Flaherty, Halfback

THE 1956 WARRIORS



Michael Bansley, Halfback



Thomas Szama, Halfback



William Patch, Guard



Michael Doyle, fullback



Ralph Dorsch, Fullback



Philip Johnson, Guard



Dan VanLannen, Halfback



Russell Hackert, Tackle



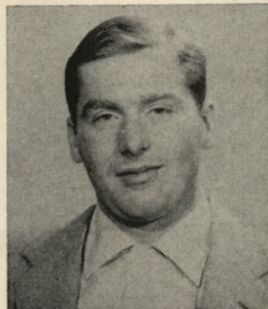
Pat Gallagher, Quarterback



THE 1956 WARRIORS



Bob O'Connor, Quarterback



Donald Walsh, Guard



Michael Kirby, Guard



Ernest Safran, Halfback



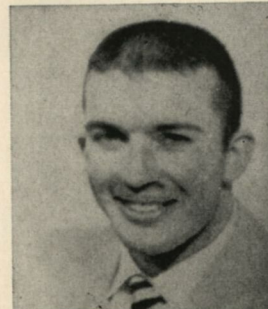
William O'Connell, Guard



Albert Guira, Tackle



James Thomey, Tackle



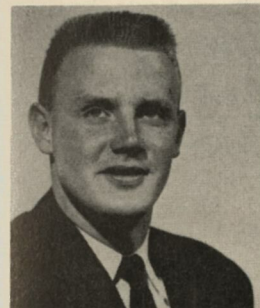
Ronald Fieber, Fullback



Richard Maierle, Tackle



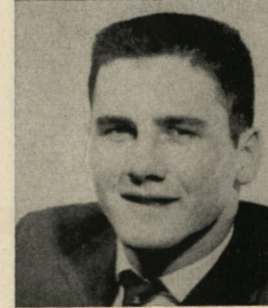
THE 1956 WARRIORS



John Cornell, Quarterback



Frank Phelps, Halfback



Joe Coviello, Quarterback



John Meehan, Tackle



Terrence Dineen, Guard



Ken Kuhs, Center



Dennis Hebson, Tackle



Marvin Bandy, Halfback



John Christman, End

KNOWN FROM COAST TO COAST FOR GOOD FOOD

CAPE COD INN

319 E. Mason Street

LUNCHEONS

DINNERS

Open 7 Days a Week

From 11 a.m.; Sunday at 1 p.m.

Private Party Facilities

BR. 1-7210

Milwaukee's Choice

Geis OVERHEAD DOORS

- Smooth Operation
- Exclusive Designs
- Custom-Made Trim & Window Arrangements
- Quality Hardware
- Flush or Panel

Displayed and operated in our showroom:

7931 W. Burleigh

GEIS

GARAGE DOOR MFG. CO.

HI. 2-6670

STARTS FRI. NOV. 9

Edna
Ferber's

'GIANT'

STARRING

ROCK HUDSON
ELIZABETH TAYLOR
JAMES DEAN

At the

Downtown

WARNER

Theatre

ADVANCE TRANSPORTATION CO.

DAILY SERVICE

MILWAUKEE - CHICAGO

General Freight and Refrigerator Service

Milwaukee Office:
2115 S. First St.

Humboldt 3-6727

Chicago Office:
4100 S. Union Ave.

The 1956 Homecoming Council



Front row (left to right): Monica Lindquist, Jean Kulas, Nancy Hirschboeck, Cynthia Rush, Donna Henderson, Marlene Schmitz, Mary Claire Ziemann.

Back row (left to right): Jim Mullins, Pete Puerling, Bob Nirschl, Joe Plater, President Mike Welch, John Burns, Jim Brooks.

University Honors Members of 1931-32 Athletic Teams

Today, as at every Homecoming game, the teams of 25 years ago are being honored by the University. Members of the 1931-32 teams, which are being honored today are:

Agostini, Arthur A.
Aspatore, Edward C.
Becker, Wayland
Bell, William M.
Blask, James J.
Booth, David
Budrun, Walter J.
Dobyns, Robert E.
Downer, Harry E.
Elliott, Donald O. (Deceased)
Elmes, Sverre A.
Errath, Edward O.
Finkbeiner, Dr. George E.
Furlong, Clarence J.
Geissman, William C.
Goemans, Howard H.
Gorychka, Adolph L.
Halfman, Rollie J.
Hood, Kenneth O.
Jelinek, Gerald R.
Kores, Joseph J.

Krueger, Arthur L. (Deceased)
Kukla, Ernest A.
McCann, Harry J.
McCarthy, Francis M. (Deceased)
McEssey, Hazen W.
McFadyen, Harold K.
McIntyre, William
McNabb, Francis V.
Meagher, Thomas F.
Metcalf, Ralph H.
Mierzwa, Francis L.
Mullen, J. Edward
Nevin, Robert E.
Nicholson, Archibald
Olson, Donald A.
Plewe, Walter A.
Quirk, Richard J.
Ravensdale, Arthur
Roark, Carroll C.
Ronzani, Eugene

Ronzani, Floyd (Deceased)
Rosemark, George W.
Rozy, Edward F.
Savage, Kenneth L.
Schram, Leon C.
Shiple, Albert E.
Sisk, John
Smith, Robert E.
Thomson, Earl J.
Tierney, John P.
Trost, Chester F.
Trost, Milton F.
Vogt, Paul F.
Walters, Graham A.
Walters, Jack
Weinshel, Dr. Leo R.
Wettlaufer, Oscar A.
Windau, Duane J.
Zinnen, Charles P.
Zummach, Francis E.

1956 WARRIOR ROSTER

No.	Name	Home Town and High School	Pos.	Ht.	Wt.	Age	Yr.
4	John Cornell	Algoma, Wis., Algoma	QB	6-1	188	19	2
7	Joseph Coviello	Niles, Ohio, McKinley	QB	6-0	180	19	2
9	Robert O'Connor	Chicago, Ill., St. Ignatius	QB	6-0	177	18	2
10	Jere Carmody*	Chicago, Ill., St. George	QB	5-11	176	21	4
14	Patrick Gallagher	Hastings, Mich., Hastings	QB	6-0	169	20	3
20	Daniel VanLannen	Milwaukee, Bay View	HB	5-9	165	19	3
25	Michael Bansley	Chicago, Ill., De LaSalle	HB	5-8	174	20	4
26	Ernest Safran	Niles, Ohio, McKinley	HB	6-2	193	23	2
27	James Aehl	Milwaukee, Messmer	HB	5-10	182	19	2
28	Marvin Bandy	Beloit, Wis., Beloit	HB	5-8	163	20	2
30	Lee Hermesen*	Green Bay, Wis., West	HB	5-11	182	21	4
31	Phil Johnson	Menominee, Mich., Menominee	FB	6-0	195	21	4
32	Alonzo Robinson	Kansas City, Mo., Rockhurst	FB	5-11	202	21	3
33	Ronald Fieber	Cudahy, Wis., Don Bosco (Milw.)	FB	5-11	192	19	3
34	James Surane	Chicago, Ill., Mt. Carmel	FB	5-11	195	19	3
36	Michael Doyle	Midland, Pa., Midland	FB	5-10	184	18	2
39	Ralph Dorsch	Winona, Minn., Cotter	FB	6-1	184	18	2
40	Terrence Ward*	Homewood, Ill., Mt. Carmel (Chicago)	HB	5-9	167	21	4
42	Robert Sheridan	Fond du Lac, Wis., St. Mary	HB	6-1	165	19	2
43	Frank Phelps	Detroit, Mich., Central Catholic (Toledo, O.)	HB	5-9	179	18	2
44	John Whiting	Bemidji, Minn., Bemidji	HB	6-0	178	19	2
45	Cornelius Adams	Brockway, Pa., Brockway	HB	5-8	174	19	3
46	Larry Foster	Milwaukee, St. John's Cathedral	HB	5-8	158	19	2
47	Thomas Szama	Watertown, Wis., Watertown	HB	6-0	180	24	3
49	Thomas Flaherty	Milwaukee, Marquette	HB	5-8	177	21	3
51	Gilbert Sedor	Wausau, Wis., Wausau	C	6-1	210	21	3
52	Richard Campbell*	Green Bay, Wis., West	C	6-1	212	20	3
55	Ken Kuhs	West Milwaukee, Wis., West Milwaukee	C	6-2	197	19	2
58	Terry Dineen	Milwaukee, Messmer	G	6-0	192	18	2
59	Theodore Mack	Middletown, Ohio, Middletown	G	5-11	186	24	2
60	William O'Connell	Chicago, Ill., Leo	G	5-11	196	19	2
61	William Clancy*	Evansville, Ind., Reitz Memorial	G	6-1	203	21	4
62	William Patch	Glen Ellyn, Ill., Glenbard	G	5-11	202	20	3
63	Bert Kuptz	Watertown, Wis., Watertown	G	5-11	194	19	2
64	John Topercer	Antioch, Ill., Campion (Prairie du Chien, Wis.)	G	6-0	191	19	3
65	Michael Kirby	Chicago, Ill., St. Rita	G	5-9	203	19	2
67	Raymond Dwyer*	Milwaukee, Marquette	G	5-11	201	21	4
68	George Gusick	Pound, Wis., Coleman	G	5-10	211	23	3
70	Dennis Hebson	Skokie, Ill., St. George (Chicago)	T	6-1	212	18	2
71	John Seliskar	Cleveland, Ohio, St. Ignatius	T	6-1	218	19	2
72	John Meehan	Broad Channel, N.Y., Cardinal Farley	T	6-2	233	24	3
73	Richard Maierle*	Green Bay, Wis., West	T	6-1	209	19	3
74	Russ Hackert	Chicago, Ill., St. George	T	6-1	218	19	2
75	Donald Walsh*	Chicago, Ill., Lindblom	T	6-2	204	21	4
76	Jerome Ulrich	Park Ridge, Ill., St. George (Chicago)	T	6-0	200	19	3
78	Al Guira*	Cleveland, Ohio, St. Ignatius	T	6-2	217	19	3
79	Ramon Gomez	El Paso, Texas, Cathedral	T	6-3	205	19	2
80	Anthony Mixan	Chicago, Ill., North	E	6-1	180	19	2
81	John Stapleton	Chicago, Ill., Leo	E	6-1	194	24	2
82	John Christman	Milwaukee, Marquette	E	6-3	196	19	2
83	James Stracka*	Hartford, Wis., Hartford	E	6-1	197	20	4
86	Arthur Katula†*	Chicago, Ill., Leo	E	6-1	202	21	4
89	Robert Wallish	Wilmette, Ill., St. George (Chicago)	E	6-1	186	19	2

*Denotes Letters Won †Denotes Captain

Songs and Cheers



1. Anthem

Hail Alma Mater,
Thy sons do call.
We're here to greet thee,
Dearest friend to all.
We're here to show thee
Our love is strong—
Hail, Alma Mater
Marquette, hear our song!

2. Ring Out Ahoya

Ring out Ahoya
With an M. U. Rah Rah,
M. U. Rah Rah
M. U. Rah Rah Rah Rah,
Ring out Ahoya
With an M. U. Rah Rah
M. U. Rah Rah for old Marquette,
U! Rah! Rah!



3. Fight Song

Let's go Marquette, we can win every game,
We've got the spirit, we've got the flame,
We've got the stuff that makes for might,
Go Marquette! Go Marquette!

Fight! Fight! Fight!

Down on the field charging on 'til we win,
Warriors we're all for you.
Put 'em out! Cheer and shout!
Blue and Gold, there's no doubt,
It's a victory for old M.U.!

4. Warriors

W-A-R-R-I-O-R-S
W-A-R-R-I-O-R-S
W-A-R-R-I-O-R-S
WARRIORS

5. Beat Yell

B-E-A-T (name)
B-E-A-T (name)
Marrrr-quette
Marrrr-quette

6. Locomotive

M-U-Rah-Rah-MAR-QUETTE
M-U-Rah-Rah-MAR-QUETTE
Y E A!

7. Skyrocket

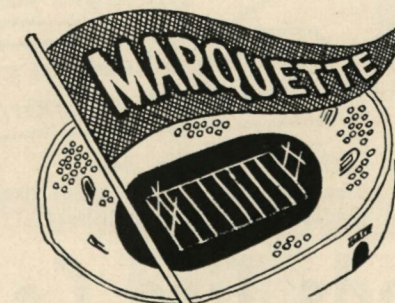
ssssssssssss—BOOM!
(Whistle)
A a-h-h-h-h-h
MARQUETTE

8. Chant

M-A-R-r-r-rrr
Q-U-E-ee-e-eee
T-T-E-ee-e-eee
FIGHT! FIGHT! FIGHT!

9. Yea Blue, Yea Gold

Yea-a-a-aaaa—Blue!
Yea-a-a-aaaa—Gold!
Yea-a-a-aaaa—Team!
LET'S GO!



12. W-A-A-A-A (Yea)

W— A-A-A-A-A Yea!
R— R—Rah
I—O—Oh
R
S

13. Thunder Clap

(Clap in unison)—MARQUETTE!
(Clap in unison)—MARQUETTE!
(Clap in unison)—MARQUETTE!

Superior Steel Products Corporation

K. Janiszewski, President

DIE SETS • COMPOSITES • STEEL FABRICATION

2754 South 19th Street

Milwaukee 15, Wisconsin

Hob-Nob Restaurant & Bar

Complete Dinners Starting at 5 P.M.

HU. 1-9630

3158 S. Howell Ave.

M. H. PAULSEN Lumber Co.

Millwork-Roofing-Plywood-Wallboards
Insulation-Paint-Hardware-Shingles

2837 W. Stark Street

UP. 3-8118

GOOD YEAR Tubeless DeLuxe Super-Cushions

No tube to puncture,
pinch, chafe, blow out!

Cost no more than
standard tires with tubes!

Fit the wheels of your present
car with no extras to buy!

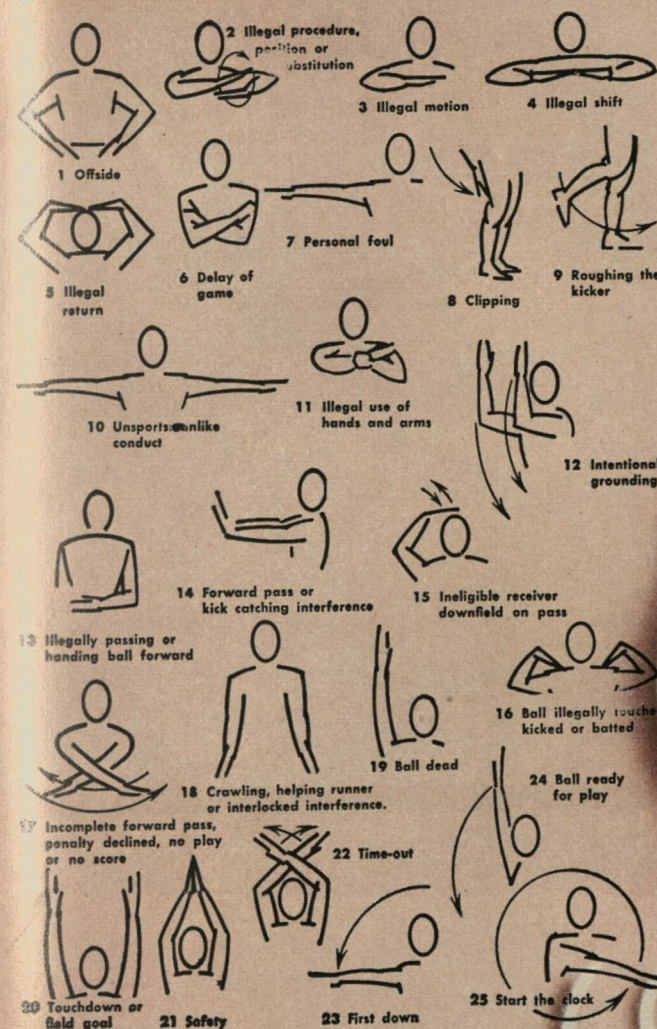
They're easy to own . . . we buy all the unused
mileage in your present tires . . . plus a generous
allowance for your tubes!

Griffin-Woods Tire Co.

770 N. JACKSON ST.
MILWAUKEE 2
BR. 1-8518

REFRESH

DRINK
Coca-Cola
REG. U.S. PAT. OFF.



SEE OPPOSITE PAGE 25 FOR PENALTIES

LA SALLE COCA-COLA BOTTLING CO.
424 E. CAPITOL DRIVE, MILWAUKEE 12, WISCONSIN

Live Modern, Boy...Smoke **L&M**!

My Chesterfields *Satisfy* the Most!



MARQUETTE

PROBABLE STARTING LINE-UP

No.	Name	Pos.
86	ART KATULA	LE
75	DON WALSH	LT
60	BILL O'CONNELL	LG
52	DICK CAMPBELL	C
65	MIKE KIRBY	RG
76	JERRY ULRICH	RT
83	JIM STRACKA	RE
4	JOHN CORNELL	QB
25	MIKE BANSLEY	LH
49	TOM FLAHERTY	RH
32	AL ROBINSON	FB

THE SQUAD

4 Cornell, QB	43 Phelps, HB	67 Dwyer, G
7 Coviello, QB	44 Whiting, HB	68 Gusick, G
9 O'Connor, QB	45 Adams, HB	69 Thomey, T
10 Carmody, QB	46 Foster, HB	70 Hebson, T
14 Gallagher, QB	47 Saxama, HB	71 Seliskar, T
20 VanLannen, HB	49 Flaherty, HB	72 Meehan, T
25 Bansley, HB	51 Sedor, C	73 Maierle, T
26 Safran, HB	52 Campbell, C	74 Hackert, T
27 Aehl, HB	55 Kuhs, C	75 Walsh, T
28 Bandy, HB	57 Allie, G	76 Ulrich, T
30 Hermesen, HB	58 Dineen, G	78 Guira, T
31 Johnson, FB	59 Mack, G	79 Gomez, T
32 Robinson, FB	60 O'Connell, G	80 Mixan, E
33 Fieber, FB	61 Clancy, G	81 Stapleton, E
34 Surane, FB	62 Patch, G	82 Christman, E
36 Doyle, FB	63 Kuptz, G	83 Stracka, E
39 Dorsch, FB	64 Topercer, G	86 Katula, E
40 Ward, HB	65 Kirby, G	89 Wallish, E
42 Sheridan, HB		

C. O. P.

PROBABLE STARTING LINE-UP

No.	Name	Pos.
88	FARRELL FUNSTON	LE
78	JOHN NISBY	LT
61	GALEN LAACK	LG
54	JACK O'ROURKE	C
67	BOB LEE	RG
74	BILL STRIEGEL	RT
86	BOB DENTON	RE
14	JIM REYNOSA	QB
22	DICK BASS	LH
47	TOM PERRY	RH
39	TOM GREEN	FB

THE SQUAD

10 Felice, QB	43 Grose, HB	71 Smith, T
14 Reynosa, QB	45 Chatfield, HB	72 Vera, T
15 Flores, QB	47 Perry, HB	73 Nichols, T
16 Whittier, QB	53 Ingram, C	74 Striegel, T
20 Hicks, HB	54 O'Rourke, C	77 Montabana, T
21 Peterson, HB	55 Rutter, C	78 Nisby, T
22 Bass, HB	56 Yamamoto, C	79 Leitaker, T
24 Metoyer, HB	60 Bateson, G	80 Allerdice, E
30 Coronado, HB	61 Laack, G	82 Russell, E
31 Haggard, FB	63 Weaver, G	83 Lane, E
32 Uselton, FB	65 Mesistrano, G	84 Cornell, E
33 Bossert, FB	66 Parks, G	85 Wallace, E
39 Green, FB	67 Lee, G	86 Denton, E
41 Larscheid, HB	68 Ortega, G	87 Williams, E
42 Golenor, HB	70 Sartwell, T	88 Funston, E

PAUSE ★ ★ ★

LOSS OF FIVE YARDS

- 1—Taking more than five times out during either half (except for replacement of injured player).
- 2—Illegal delay of game.
- 3—Failure to complete substitution before play starts.
- 4—Violation of kickoff formation.
- 5—Player out of bounds when scrimmage begins.
- 6—Putting ball in play before Referee signals "Ready-for-play".
- 7—Failure to maintain proper alignment of offensive team when ball is snapped. Also, backfield man illegally in motion.
- 8—Offside by either team or encroachment on neutral zone.
- 9—Attempt to draw opponents offside.
- 10—Crawling by runner.
- 11—Illegal forward pass (includes intentional grounding of forward pass). Also loss of down.
- 12—Taking more than two steps after Fair Catch is made.
- 13—Player on line receiving snap.
- 14—Any violation of the scrimmage formation.

LOSS OF FIFTEEN YARDS

- 15—Team not ready to play at scheduled time.
- 16—Violation of rules during intermission.
- 17—Illegal return of suspended player.
- 18—Interference by member of offensive team with defensive player making pass interception. (Also loss of down).
- 19—Interfering with the opportunity of a player of the receiving

PENALTIES

- team to catch a kick.
- 20—Illegal use of hands or arms by offensive player.
- 21—Tackling or blocking defensive player who has made fair catch.
- 22—Roughing the kicker.
- 23—Piling up, hurdling, clipping.
- 24—Tackling player out of bounds, or running into player obviously out of play.
- 25—Coaching from sidelines.
- 26—Failure to stop one full second following shift.
- 27—Defensive holding.
- 28—Invalid Signal for Fair Catch.

OTHER PENALTIES

- 29—Striking an opponent with fist, forearm, elbow or locked hands, kicking or kneeling — Mandatory disqualification of offending player plus loss of fifteen yards.
- 30—Foul within the one yard line — half the distance to the goal.
- 31—Interference by defensive team on forward pass — passing team's ball at spot of foul.
- 32—Forward pass being touched by ineligible receiver beyond the line of scrimmage — loss of fifteen yards from spot of preceding down and loss of a down.
- 33—Illegal touching of kicked ball within opponent's ten yard line — touchback.
- 34—Flagrant rough play or unsportsmanlike conduct — Mandatory disqualification plus loss of fifteen yards.
- 35—Eligible pass receiver who goes out of bounds and later touches a forward pass — loss of down.

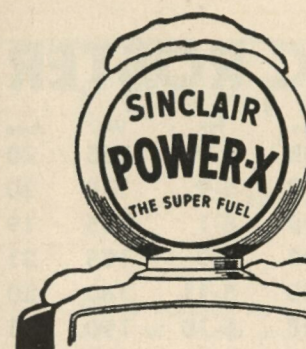
SEE OPPOSITE PAGE 24 FOR OFFICIALS SIGNALS

DRINK
Coca-Cola



COPYRIGHT 1956, THE COCA-COLA COMPANY

LA SALLE COCA-COLA BOTTLING CO.
424 E. CAPITOL DRIVE, MILWAUKEE 12, WISCONSIN



POWER UP WITH POWER-X
FOR **SURE STARTING!**



World's First Trouble-Proof Winter Gasoline

FREEZE-PROOF — protects against hard starting and stalling caused by freezing in fuel lines.

RUST-PROOF — patented anti-rust protection of RD-119® saves fuel system repairs. (U.S. Patent No. 2,594,266).

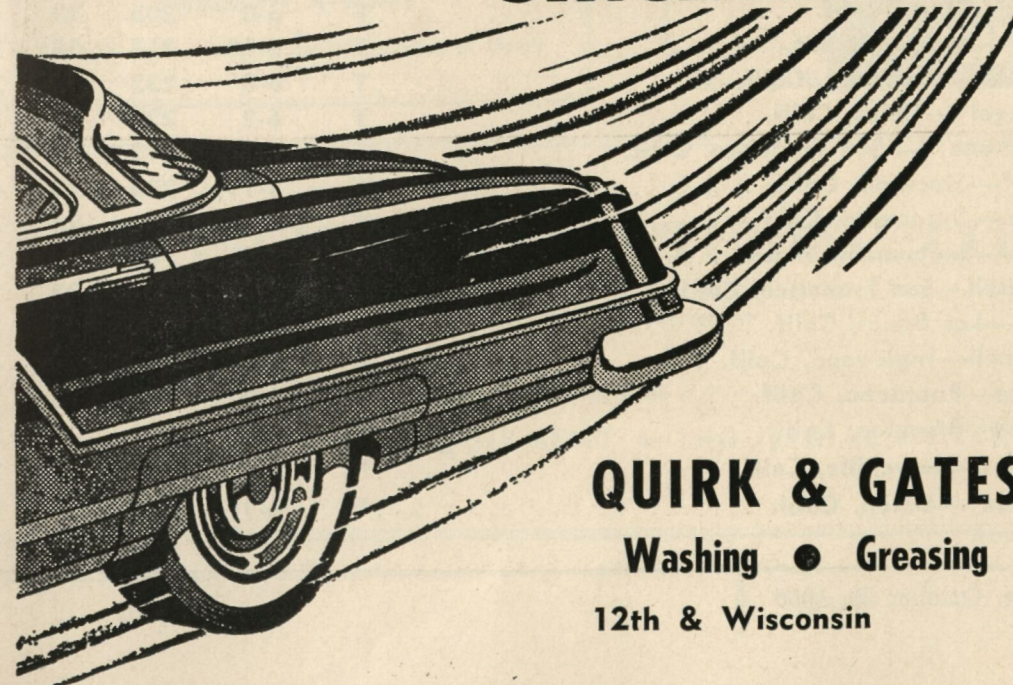
STALL-PROOF — protects against "carburetor icing" — a common cause of stalling.

KNOCK-PROOF — assures smooth, knock-free power even in highest compression cars. Also controls pre-ignition.

PLUS easy starting, fast warm-up, zip-away acceleration and long mileage. Power up with POWER-X and feel the difference.

The New Super Fuel

SINCLAIR POWER-X



QUIRK & GATES SERVICE

Washing • Greasing • Parking

12th & Wisconsin

BR. 2-9310

1956 COLLEGE OF PACIFIC ROSTER

No.	Name	Home Town	Pos.	Ht.	Wt.	Age	Yr.
10	Charles Felice	Santa Cruz, Calif.	QB	5-9	165	20	3
14	James Reynosa*	Stockton, Calif.	QB	5-9	170	20	4
15	Thomas Flores	Sanger, Calif.	QB	6-1	185	19	3
16	Delmas Whittier	Oroville, Calif.	QB	6-0	185	21	3
20	Robert Hicks	Janesville, Calif.	HB	5-11	180	20	3
21	Gene Peterson	Manteca, Calif.	HB	5-10	190	21	3
22	Richard Bass	Vallejo, Calif.	HB	5-10	185	19	2
24	Roger Metoyer	Hawthorne, Calif.	HB	5-11	178	20	3
30	Robert Coronado	Vallejo, Calif.	HB	6-2	180	19	2
31	Charles Haggard	Merced, Calif.	FB	5-10	195	20	2
32	Kenneth Uselton	Cloverdale, Calif.	FB	5-11	195	20	3
33	Donald Bossert	Lodi, Calif.	FB	5-11	185	21	4
39	Thomas Green	Long Beach, Calif.	FB	5-11	190	21	3
41	John Larscheid	Pleasant Hills, Calif.	HB	5-6	154	22	3
42	Joseph Golenor	French Gulch, Calif.	HB	6-0	185	20	3
43	Glen Grose	Lake Worth, Fla.	HB	5-10	195	26	4
45	Charles Chatfield	Sacramento, Calif.	HB	5-11	185	19	3
47	Thomas Perry	Oakdale, Calif.	HB	6-1	186	22	4
53	James Ingram	San Rafael, Calif.	C	6-2	240	20	2
54	John O'Rourke**	Burbank, Calif.	C	6-1	207	20	4
55	Roland Rutter	Hawthorne, Calif.	C	6-2	210	25	3
56	Mich Yamamoto	Torrance, Calif.	C	6-0	202	20	3
60	Richard Bateson	Wilmington, Del.	G	6-0	186	19	2
61	Galen Laack**	Abbotsford, Wis.	G	6-0	221	25	4
63	Floyd Weaver	Stockton, Calif.	G	5-11	210	22	3
65	Arthur Mesistrano	Brooklyn, N.Y.	G	5-11	240	19	2
66	Ben Parks	Hollister, Calif.	G	5-8	190	22	4
67	Robert Lee**	Concord, Calif.	G	5-11	205	20	4
68	Tony Ortega	Stockton, Calif.	G	5-10	185	21	4
70	Robert Sartwell	Salinas, Calif.	G	6-0	205	19	2
71	Ronald Smith	Chico, Calif.	T	6-0	205	22	4
72	Adrian Vera	Stockton, Calif.	T	5-10	215	18	2
73	Joseph Nichols	Woodland, Calif.	T	6-0	235	19	2
74	William Striegel*	Chico, Calif.	T	6-2	222	19	3
77	Frank Montabana**	San Francisco, Calif.	T	6-0	213	21	4
78	John Nisby**	Stockton, Calif.	T	5-11	230	20	4
79	J. D. Leitaker	Susanville, Calif.	T	6-1	230	24	3
80	Lee Allerdice	Snohomish, Wash.	E	5-9	180	24	2
82	Matthew Russell	San Francisco, Calif.	E	6-3	215	23	2
83	George Lane	Los Banos, Calif.	E	6-3	220	22	3
84	Kenneth Cornell	Inglewood, Calif.	E	6-0	190	20	4
85	Peter Wallace	Pasadena, Calif.	E	6-0	185	23	2
86	Robert Denton	Stockton, Calif.	E	6-4	224	21	2
87	John Williams	Chowchilla, Calif.	E	5-8	195	23	2
88	Farrell Funston*	Dixon, Calif.	E	6-1	212	20	3

*—Denotes Captain

CONSTANT HOSIERY STORES

Your headquarters for
**Brassieres - Girdles - and those wonderful
Miss Secretary Nylons**

14 convenient locations to serve you

9th & Mitchell st.
4821 W. North ave.
1622 W. North ave.

2960 S. 13th st.
1318 S. 16th
1215 W. Lincoln

S. 76th & W. Beloit
3409 N. Green Bay ave.
7137 W. Greenfield

also Downtown Racine, Waukesha, Plymouth, Port Washington and West Bend



Cocktails

Completely new Chinese atmosphere awaits you due to recent remodeling of interior and exterior of this, Wisconsin's Finest American - Chinese Restaurant.

STEAKS • CHOPS • SEAFOODS

Featuring

The Finest Cantonese Cuisine

Open 11:30 a.m. to 3:30 a.m.
Saturday till 4:30

For Reservations

Phone HI. 4-9644

4720 W. Lisbon Ave. Hy. 41—Lisbon at North

**WORLD'S GREATEST NOVEL
NOW ON THE SCREEN!**

"SUPERB!" —N. Y. Herald-Trib.
"BRILLIANT!" —New York News

Paramount presents
LEG. TOLSTOVS
War and Peace
A PONTI-DELAURENTIUS PRODUCTION

AUDREY HEPBURN • HENRY FONDA • MEL FERRER

**STUDENTS
A 4:30
MATINEE DAILY
CALL BR. 6-6370**

NOW SHOWING!!!

Riverside

BR. 6-6370

PICK MANUFACTURING CO.

West Bend, Wisconsin

Manufacturers of

AUTO PARTS • FARM EQUIPMENT • INDUSTRIAL WATER HEATERS

The ONE Gasoline That
HAS NO EQUAL!



AT PATE DEALERS

DIMICELI'S

Top o' The Town

Bar Lounge
Charcoal Broiled Food
Steaks — Ribs — Chicken
Italian Sausage
Spaghetti — Ravioli

Daily 5 p.m. to 1:30 a.m.
Sat. to 3:00 a.m.

2218 W. Wells St.

DI. 2-9925

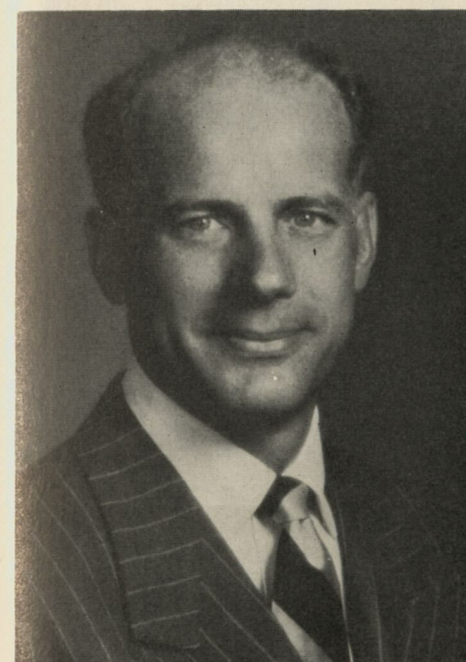
Good Luck Marquette!

MILWAUKEE MACHINE PRODUCTS CO.

3889 N. First Street

MILWAUKEE 12, WISCONSIN

Top Figures In College of Pacific Football



Dean Edward S. Betz
Faculty Athletic Representative



Dr. Robert E. Burns
President, College of the Pacific

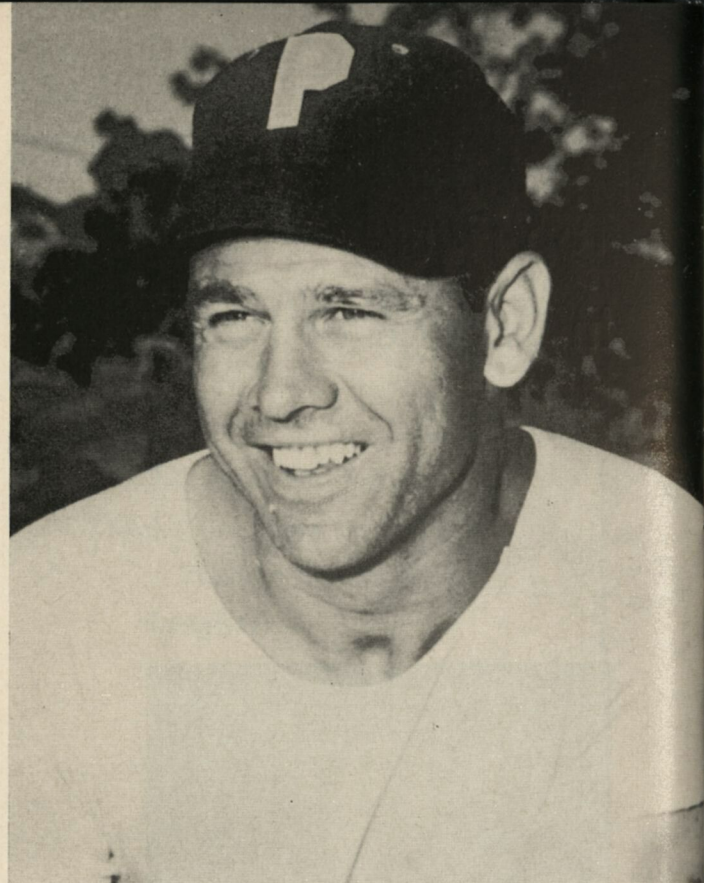
Jack Myers
Athletic Director, Head Coach



Dr. Emerson Cobb
Chairman, Athletic Board



COLLEGE OF PACIFIC COACHING STAFF



Jack Myers
Athletic Director, Head Coach

At just 31 years of age, Jack "Moose" Myers is serving his fourth year as head coach at College of Pacific, and his first as athletic director. When he was appointed head coach, he was the youngest person (28) ever to be named head football coach at a major football school. Myers is a former UCLA grid star, and also played three years of professional football with the Philadelphia Eagles where he was considered the "top blocking back" in the game. He served one year as an assistant coach at Pacific before being named to the top post.

Line Coach John Nikceovich, another UCLA graduate, was a playing mate of Myers' in 1946 and 1947. In 1950, after being named All-Coast guard in his senior year, Nikceovich served as a graduate assistant to Bruin Coach Red Sanders. In 1951 and 1952, he was line coach at the University of Idaho. He joined the Pacific staff in 1953 when Myers was named head coach.

John Rohde, assistant coach, is a 1949 graduate of the

College of the Pacific, playing end for the Bengals from 1946 through 1949. After finishing college, Rohde tried his hand at pro ball, but sustained a shoulder injury which ended his playing days. In 1950, he returned to the Pacific campus as an assistant coach. In 1951 and 1952 he was in business in Arizona, coaching the Arizona State ends in 1953 spring practice. He returned to his former post at COP in May, 1953.

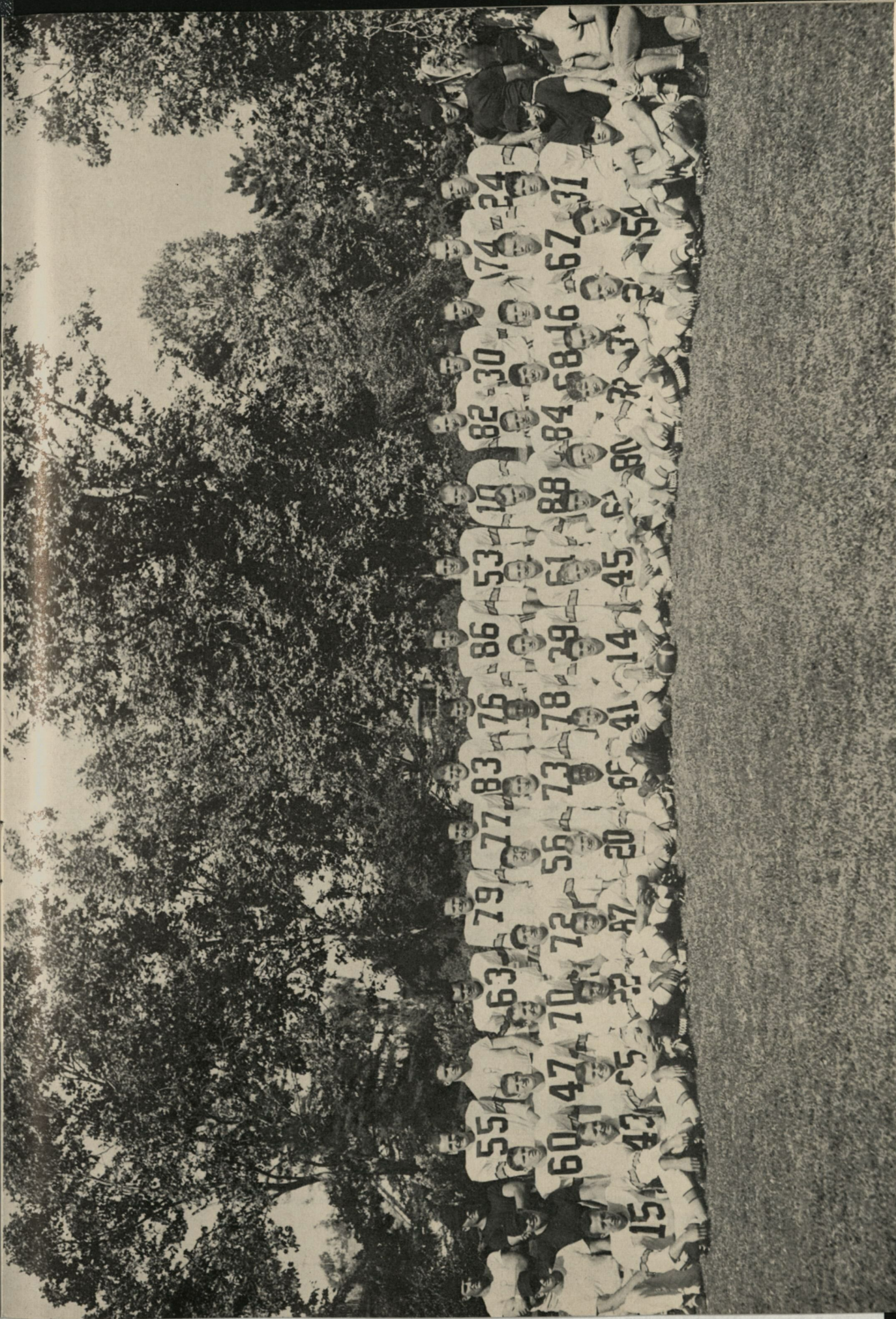
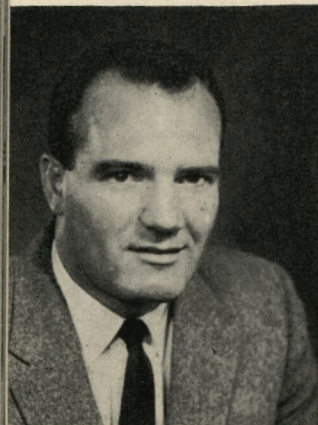
Backfield Coach Gene "Skip" Rowland is the newest addition to the Bengal coaching staff. He assumed the backfield position this year after one year as Freshman Coach and varsity scout. A former UCLA halfback, Rowland played two years at second base for Spokane of the Western International League before turning his attention to coaching. He was backfield coach at Riverside Junior College for one season, then head coach for four years at Long Beach Wilson High before coming to COP.

John Nikceovich
Line Coach

John Rohde
Assistant Coach

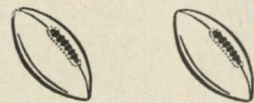
Gene Rowland
Backfield Coach

Mel Moretti
Trainer





Carry the ball . . .

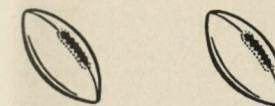


Warriors! Civil defense is everyone's job. It means people trained in first aid, fire-fighting, rescue work. It means a warden in every block to serve as "safety adviser." It means blood donors, litter bearers, auxiliary police, radiological teams, nurses, doctors, and aides. It

CIVIL DEFENSE IS TEAMWORK - -

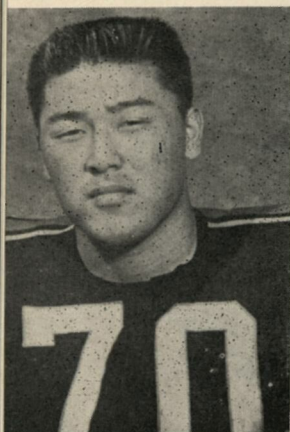


for Civil Defense!

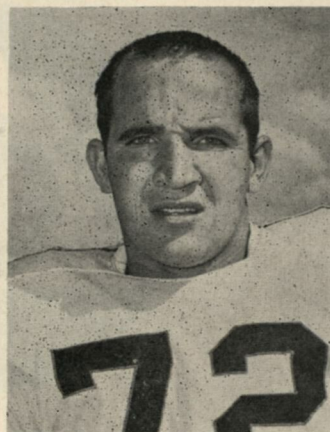


means messengers, truck drivers, engineers, canteen helpers, cooks. It means thousands of citizens voluntarily organized into a huge team, ready to offer aid in event of disaster. Find out where you can best serve in CD. Contact your Milwaukee Civil Defense and Disaster office today!

THERE'S A PLACE FOR YOU



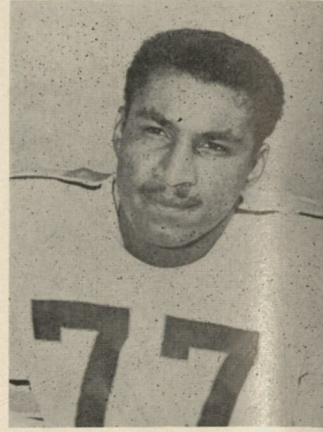
Mich Yamamoto
Center



Robert Sartwell
Tackle



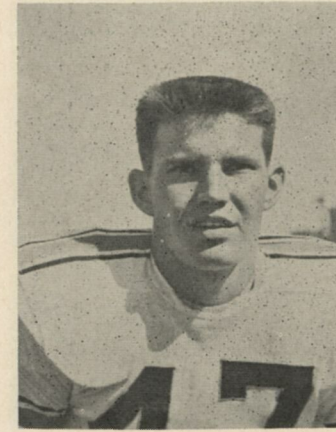
Floyd Weaver
Guard



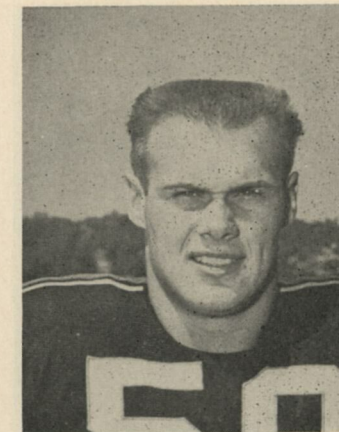
Richard Bass
Halfback



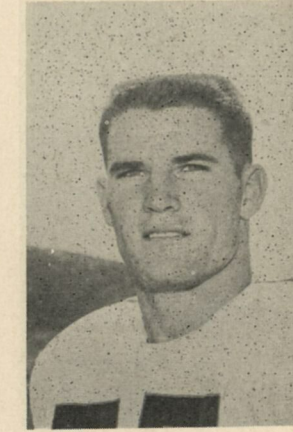
Robert Lee
Guard



Delmas Whittier
Quarterback



Farrell Funston
End



Thomas Perry
Halfback

The College of

Pacific Bengals



Adrian Vera
Tackle



Thomas Green
Fullback



George Lane
End



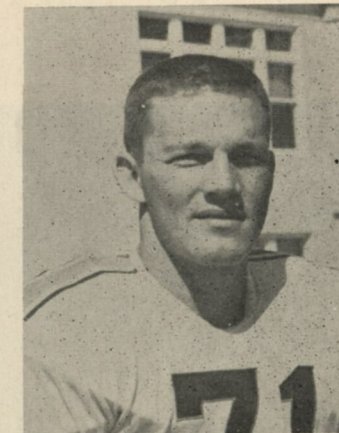
Glen Grose
Halfback



Smith Memorial Gate
(Morris Chapel in Background)
College of Pacific



Music Conservatory
College of Pacific



Galen Laack
Guard



John Larscheid
Halfback



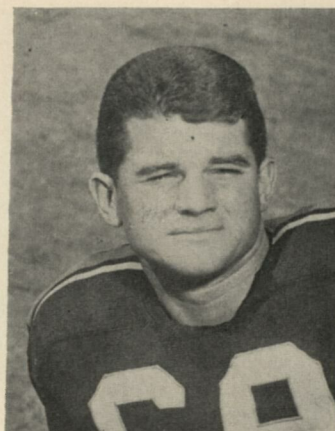
Roger Metoyer
Halfback



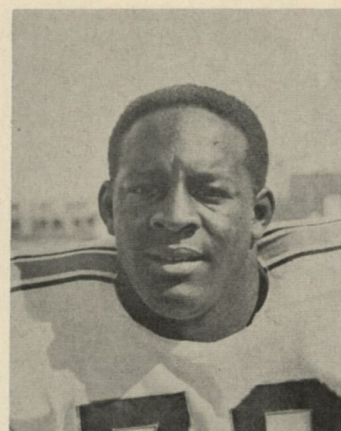
Roland Rutter
Center



Donald Bossert
Fullback



Ronald Smith
Tackle



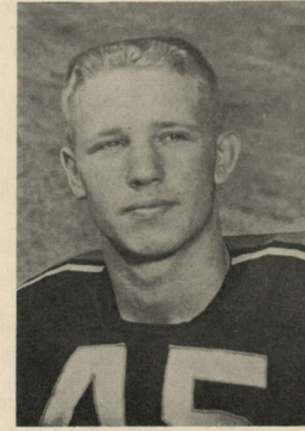
John Nisby
Tackle



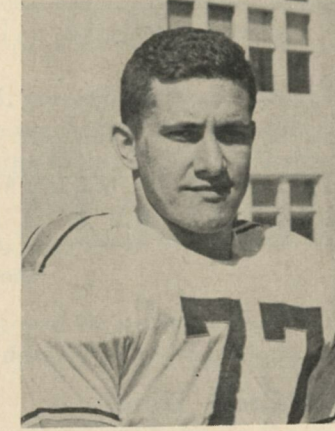
Robert Denton
End



Gene Peterson
Halfback



Charles Chatfield
Halfback



Frank Montabana
Tackle

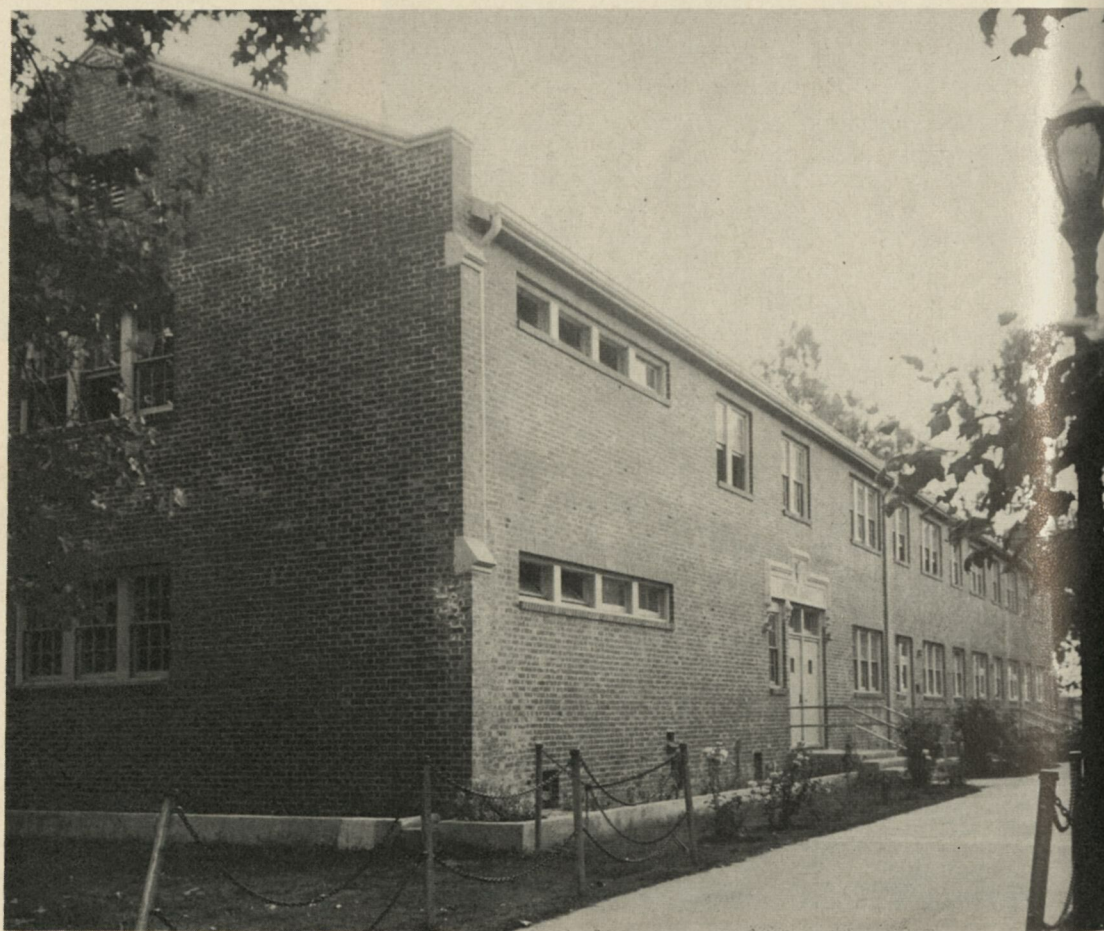


Arthur Mesistrano
Guard

The College of Pacific Bengals



William Striegel
Tackle



Owen Hall—School of Education
College of Pacific



Jack O'Rourke
Center



The Marching Band
College of Pacific



Kenneth Cornell
End



James Reynosa
Quarterback

MARQUETTE BOOSTERS

Abbot Crest Hotel	S. J. Casper Co., Inc.
American Can Co.	Charles L. Coughlin
Joseph B. Armitage	Wm. F. Eichfeld & Sons Co.
Armour & Co.	Empire Fish Co.
Artistic Cleaners & Launderers	Fraternal Order of Eagles Ray Markey, Secretary
Badger Die Casting Co.	Will C. Gobel Attorney-at-Law, MU '26
Henry J. Ball & Sons	Hall Steel Co.
Roland W. Bayerlein	Hoehnen Sign Co.
Becker Electrotpe Co.	Humphrey Chevrolet Co.
Berthelet Fuel & Supply Co.	Morton R. Hunter
West Allis Borgwardt Funeral Home	J. Kornely Hardware Co.
Bernard V. Brady	Kroenert Tool & Die Co.
J. C. Busch Co.	Laufenberg Bros. Roofing & Sheet Metal
Joseph M. Carpenter	Manegold Stone Co.

A Pertinent Message To All Sportsmen

INTERCOLLEGIATE ATHLETICS ARE, essentially, based on the idea of friendly competition. The players performing before you this afternoon are college athletes. The players on the opposing teams are friendly rivals. They are not enemies.

SO SHOULD IT BE with the spectators, regardless of personal feelings of loyalty to one side or the other in this game.

THE VISITING TEAM this afternoon, and in every collegiate game, is the guest of the home team. The players deserve to be regarded and treated as such.

THE OFFICIALS ARE men charged, by agreement between the competing teams, with the administration of the rules. They are completely a part of this friendly competition.

THIS MESSAGE is printed only as a reminder that collegiate athletics are for sportsmen, on the field and in the stands.

(the preceding message was composed by James L. Sankovitz, former editor of the Marquette Wigwam, and has been reprinted in the interest of sportsmanship.)

The 1956 Football Rules Changes

Every year the N.C.A.A. announces a few rules changes, and this year is no different. Nine changes are significant enough to deserve mention.

1. The major change is the reinstatement of the rule covering eligible pass receivers. The rule is stated thusly: "Any player in an end position on the line of scrimmage may receive a forward pass."

2. The official time, on kick-offs, begins when the ball is legally touched. In the past, the clock started when the kicker's foot made contact with the ball.

3. The rules committee has also clarified the definitions of "clipping" and "blocking." Clipping, the book says, is "running or diving into the back, or throwing the body across the back of the leg or legs of an opponent not carrying the ball." Blocking is defined as "obstructing an opponent by contacting him with any part of the blocker's body."

4. An addition has been made to the rule regarding assisting a runner in making forward progress. The rule now says that a 15 yard penalty is in order if a teammate helps the ball carrier by pulling, pushing, lifting him from the ground, or charging into the runner to assist him in gaining forward progress.

5. The referee shall not call a free time out because of a torn jersey, unless equipment sticking out from the jersey is considered dangerous to other players.

6. If the game clock is stopped, and a kicking tee is thrown on to the field, it is legal. If the game clock is running and a kicking tee is thrown on the field, it will be considered as "sideline coaching" unless an official is notified that a tee is being requested.

7. Considering the legal use of hands or arms after a forward pass has been touched, the committee says this: When a legal forward pass has been thrown, a defensive player has the same rights to the ball as an offensive player, but no player may deliberately interfere with the other's opportunity to catch the ball. Once the ball has been touched, any eligible receiver may use hands and/or arms in order to push an opponent out of the way.

8. For the convenience of all concerned, the following numbers have been suggested: Backs, 10 to 49; Centers, 50 to 59; Guards, 60 to 69; Tackles, 70 to 79, and Ends, 80 to 89.

9. Either team may elect to use a rubber covered ball while on offense. A mutual agreement between the teams is no longer necessary.

MARQUETTE BOOSTERS

Lester B. McElhiney

Metal Forms Corporation

Metal Products Corp.

Mid-States Shoe Co.

H. A. Milhaupt Co.

Milwaukee
Leather Belting Co.

Northland Oil Co.

Northwest
Dental Laboratory

Cyrus L. Philipp

Louis Quarles

Reliance Improvement Co.

Rhea Manufacturing Co.

Rosenbergs
3rd at North & Capitol Court

Schaefer Brush Mfg. Co.

Schoendorf & Schoendorf
MU Law, '20 & '51

Shaw, Muskat & Paulsen

Steinhagen & Steinhagen
Civil Engineers & Surveyors

Rud. J. Talsky, Inc.

Teutonia Bank

Wauwatosa Realty Co.
Now 10 Offices — 100 Salesmen

Philip J. Weiss, Inc.

Wisconsin Bearing Co.

Wisconsin Cuneo Press,
Inc.

Dexter Witte, Jr.

F. W. Woolworth Co.

George Ziegler Co.

H. W. Zummach

Marquette's History With '56 Opponents

University of Detroit "Titans"

1920	MU	14	Detroit	21
1922	MU	6	Detroit	3
1923	MU	18	Detroit	6
1929	MU	6	Detroit	6
1930	MU	0	Detroit	0
1931	MU	0	Detroit	7
1932	MU	0	Detroit	7
1933	MU	6	Detroit	22
1934	MU	6	Detroit	13
1940	MU	0	Detroit	19
1941	MU	6	Detroit	7
1942	MU	10	Detroit	0
1945	MU	32	Detroit	14
1946	MU	21	Detroit	20
1947	MU	41	Detroit	18
1948	MU	6	Detroit	34
1949	MU	24	Detroit	14
1950	MU	27	Detroit	14
1951	MU	26	Detroit	13
1952	MU	37	Detroit	27
1953	MU	19	Detroit	0
1954	MU	14	Detroit	13
1955	MU	7	Detroit	20
1956	MU	7	Detroit	20

12 wins, ten losses, two ties

Kansas State College "Wildcats"

1925	MU	0	Kansas State	2
1926	MU	14	Kansas State	0
1929	MU	25	Kansas State	6
1934	MU	27	Kansas State	20
1935	MU	14	Kansas State	0
1936	MU	13	Kansas State	0
1937	MU	0	Kansas State	13
1938	MU	0	Kansas State	6
1939	MU	0	Kansas State	3
1945	MU	55	Kansas State	13
1950	MU	46	Kansas State	6
1955	MU	0	Kansas State	42

Seven wins, five losses

Holy Cross College "Crusaders"

1927	MU	12	Holy Cross	6
1928	MU	6	Holy Cross	6
1939	MU	0	Holy Cross	7
1950	MU	21	Holy Cross	19
1951	MU	13	Holy Cross	39
1952	MU	0	Holy Cross	7
1953	MU	13	Holy Cross	7
1954	MU	19	Holy Cross	14
1955	MU	18	Holy Cross	6

Five wins, three losses, one tie

University of Wisconsin "Badgers"

1904	MU	0	Wisconsin	33
1905	MU	0	Wisconsin	29
1908	MU	6	Wisconsin	9
1913	MU	0	Wisconsin	13
1914	MU	0	Wisconsin	48
1915	MU	0	Wisconsin	85
1919	MU	0	Wisconsin	13
1932	MU	2	Wisconsin	7
1933	MU	0	Wisconsin	19
1934	MU	0	Wisconsin	3
1935	MU	33	Wisconsin	0
1936	MU	12	Wisconsin	6
1937	MU	0	Wisconsin	12
1938	MU	0	Wisconsin	27
1939	MU	13	Wisconsin	14
1940	MU	19	Wisconsin	33
1941	MU	28	Wisconsin	7
1942	MU	7	Wisconsin	35
1943	MU	33	Wisconsin	7
1944	MU	2	Wisconsin	21
1945	MU	13	Wisconsin	40
1946	MU	0	Wisconsin	34
1947	MU	12	Wisconsin	35
1948	MU	0	Wisconsin	26
1949	MU	0	Wisconsin	41
1950	MU	6	Wisconsin	28
1951	MU	6	Wisconsin	22
1952	MU	19	Wisconsin	42
1953	MU	11	Wisconsin	13
1954	MU	14	Wisconsin	52
1955	MU	14	Wisconsin	28
1956	MU	0	Wisconsin	41

Four wins, 28 losses



University of Cincinnati "Bearcats"

1953	MU	31	Cincinnati	7
1954	MU	13	Cincinnati	30
1955	MU	12	Cincinnati	13

One win, two losses

College of Pacific "Tigers"

1951	MU	27	COP	35
1952	MU	27	COP	27
1953	MU	20	COP	20
1954	MU	19	COP	13

One win, one loss, two ties



Indiana University "Hoosiers"

1947	MU	6	Indiana	48
1950	MU	7	Indiana	18
1953	MU	20	Indiana	21

No wins, three losses

Boston College "Eagles"

1923	MU	7	Boston	6
1924	MU	7	Boston	34
1929	MU	20	Boston	6
1930	MU	6	Boston	0
1931	MU	7	Boston	0
1932	MU	13	Boston	0
1954	MU	7	Boston	13
1955	MU	13	Boston	13
1956	MU	19	Boston	26

Five wins, three losses, one tie

University of Tulsa "Hurricanes"

1951	MU	21	Tulsa	27
1955	MU	13	Tulsa	0
1956	MU	0	Tulsa	54

One win, two losses

GIUSEPPE'S PIZZERIA

*Wishes the Marquette Warriors
the Best of Luck!*

The Place Where
PIZZA Is Made
to Your Taste

*Specializing in
Assorted Italian Dishes
plus Sandwiches*

FOR TAKE OUT ORDERS
Call LO. 2-7420 & HI. 2-2270

We Are Now Open 7 Days a Week

Daily: 3:30 p.m. - 3:00 a.m.

Saturdays: 3:30 p.m. - 4:30 a.m.

NORTH
3407 N. GREEN BAY AVE.

WEST
4858 W. FOND DU LAC AVE.



Erffmeyer & Son Co. Inc.

MANUFACTURING JEWELERS
246-250 PLANKINTON BUILDING
MILWAUKEE 3, WISCONSIN

NORTH SHORE STATE BANK

4015 N. Oakland Ave.
Shorewood 11, Wis.

Member Federal Deposit Insurance Corp.

*GOOD LUCK,
MARQUETTE!*

X-RAY DEPARTMENT

GENERAL  ELECTRIC

MILWAUKEE 1, WISCONSIN

FRUEHAUF TRAILER CO.

730 S. First St. Milwaukee 4 BRoadway 3-7080

Factory Branch for one of the "WORLD'S LARGEST BUILDERS OF TRUCK-TRAILERS"

Sales & Service for Commercial Trailers and Bodies of all Types

'Get More Guaranteed 1st Quality
AUTO SUPPLIES
For Your Money!'

Complete Lines of Guaranteed TIRES, MOTORS, BATTERIES, SEAT COVERS, AUTO ACCESSORIES, & REPLACEMENT PARTS

**MID-WEST
TIRE
AUTO
STORES**

Get All YOUR AUTO NEEDS on 'E-Z' TERMS

NO MONEY DOWN
Satisfaction Guaranteed

MID-WEST TIRE AUTO STORES MILWAUKEE

- 3321 N. Green Bay
- 7028 W. Greenfield
- 422 E. Lincoln
- 431 N. Water
- 2624 W. Greenfield
- 2332 N. Third
- 805 W. Mitchell
- 3621 W. North
- 3433 W. Villard

also WAUKESHA, RACINE, and KENOSHA

BOYNTON CAB CO.

OPERATORS OF

**YELLOW
CABS**

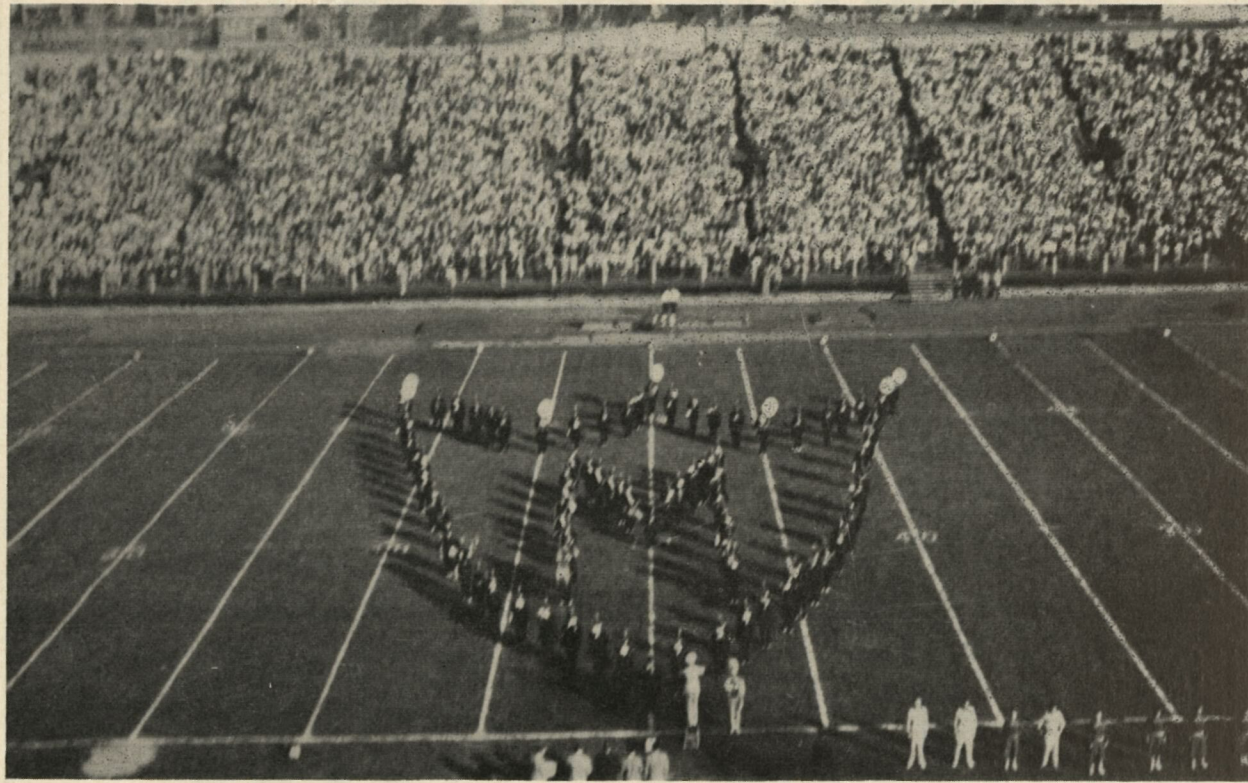
BRoadway 1-1800

AIR LINE LIMOUSINE SERVICE

CONCESSION PRICES

Cigarettes	25	Coca Cola	10
Ice Cream	15	Hot Dogs	25
Milk, 1/2 pint	15	Bratwurst	35
Hot Chocolate	25	Potato Chips	15
Coffee	15	Candy	10
Soft Drinks	10 & 20	Peanuts	15
		Pop Corn	15

The 1956 Marquette University Marching Band



The 1956-57 school year looms as one of the busiest for the Marquette University Band. It also promises to be a year of many changes.

Three home games, a tentatively scheduled trip to Indiana and another home game mean that five consecutive performances must be learned by the members. In addition to these, the band also gave pre-game and halftime performances at the Wisconsin game in Madison, Sept. 29.

A house at 527 North 16th Street has been purchased for the band in order to provide offices, equipment space and individual practice rooms. At present, the band does not have a regular rehearsal room. Fall rehearsals are held three times a week here at the stadium. During the concert season, the band practices at the Odd Fellows Hall.

Dick Becker, Law School freshman from Hartford, Wis., is drum major this year.

A new system for teaching individual shows has been introduced this year. Mimeographed formations given to the 90 members are marked with the position of each section. Leaders appointed from each section then direct bandsmen to their proper places. The new system is said to eliminate possible confusion.

Ideas for the shows, for the most part, are originated by Band Director William Geisheker. Dialogue is also written by Geisheker.

In addition to playing at all home football games and one or two road games, the band also plays for all home basketball games and at Musical Varieties. The concert band terminates its season each year with the Spring concert.

Officers for this year are: Louis Janda, president; Richard Syverson, vice-president; Thomas Kowalski, secretary, and Bruce Boorman, treasurer and equipment manager. William Kimball is business manager.



*Good Luck --- Marquette!
from Your District Attorney*

William J. McCauley

Marquette University Law '23

AMERICAN LACE PAPER CO.

Manufacturers of

Betty Brite

Paper Products

4425 N. Pt. Washington Rd.
Milwaukee

Goelzer & Schultz Co.

Established 1899

**BUILDERS AND MILLWORK
MANUFACTURERS**

Residential - Commercial - Industrial

Alterations - Repairs

2350 N. 31st St.

Hilltop 2-2717

STAFF ELECTRIC CO.

CONTRACTORS

1659 N. Jackson Street
BRoadway 6-3800

John C. Staff, Jr.

George K. Staff

after the game

STOP at the

Ambassador Hotel

Headquarters for all Athletic Activities
Collegiate and Professional

"Most Convenient to Marquette Stadium"

WISCONSIN GASKET & MFG. CO.

Gaskets of All Types

Also Facilities for Tools-Dies-Jigs-Fixtures

Gauges - Small Lot Stampings Less Dies

Granville, Wisconsin
(Suburb of Milwaukee)

FLagstone 3-9000

LYSHEK'S

Wonderful Food

Roast Duck-One of Our Specialties

Open from 4 p.m.
Sundays from 12 noon

On HIGHWAY 141
at Highland Road

Only 4 Miles North of
County Line Road on Pt. Washington Rd.

LYSHEK'S

(Formerly Wood's)

For Reservations
Phone THiensville 6169 or 7781

PATRONIZE

OUR

ADVERTISERS

ATHLETIC EQUIPMENT REPAIR CO.

E. MIERITZ

1215 North 11th Street

BRoadway 1-2837

We Clean and Repair All Kinds of Athletic Equipment

YARDAGE GAINED RUSHING

Player		1	2	3	4	5	6	7	8	9	10	11	12
MU													
BC													

YARDAGE GAINED PASSING

Passer		Attempted	Completed	Intercepted
MU				
BC				

FIRST DOWNS

		1st Half	2nd Half	Total
MU	Rushing			
	Passing			
	Penalty			
BC	Rushing			
	Passing			
	Penalty			

PENALTIES

		1st Half	2nd Half	Total
MU				
BC				

STEINMAN LUMBER CO.

LUMBER - ROOFING - PAINTS - PLYWOOD - INSULATION, ETC.

West Yard
1235 N. 35th Street
Division 2-0740

North Yard
3500 N. Holton Street
Woodruff 2-4331



Fox WISCONSIN
Theaters . . .
Score Milwaukee's
"Entertainment
Touchdowns"!

Whether at HOME
or OUT-OF-TOWN

See Your Favorite
Football Team

in OUTSTANDING Newsreel Shots at
the following Fox Wisconsin Theatres:
WISCONSIN : PALACE



Johnny Sisk, '33
Special Agency Assistant

BANKERS LIFE COMPANY

for

Life Insurance Accident Group Insurance
Annuities & Sickness Pension Plans

L. W. SPICKARD, Agency Manager

110 E. Wisconsin Ave. Bldg.
Suite 915 Milwaukee 2 Broadway 6-3576

MARQUETTE ALUMNI
ASSOCIATES

John Sisk
Arthur Neuhaus
Roman Wagner
Fred Trewyn
Cal Neuhaus
Al Bond

GOOD LUCK WARRIORS

and

BEST WISHES FOR A SUCCESSFUL SEASON

CURTIS DEVELOPMENT & MFG. CO.

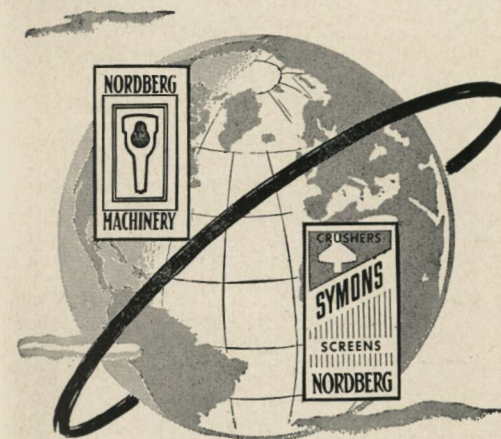
3266 N. 33rd St.

MILWAUKEE 16, Wis.

Manufacturers of Electrical and Mechanical Controls

NORDBERG MANUFACTURING CO.

A Milwaukee firm known throughout the world as a
leading builder of Dependable Machinery . . .

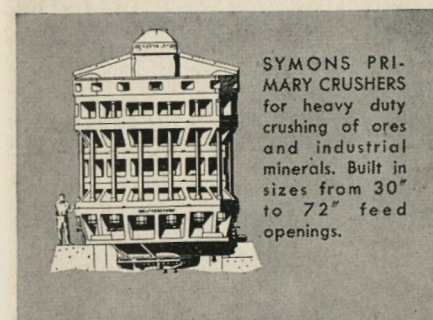


☆ for Power and Light

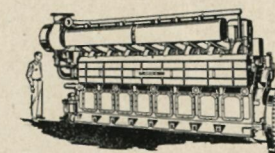
☆ for Marine Power

☆ for improving Railway
Transportation

☆ for processing the earth's
Ores and Minerals

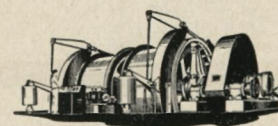
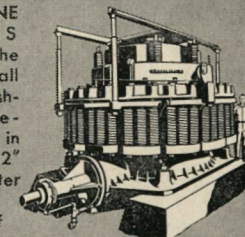


SYMONS PRI-
MARY CRUSHERS
for heavy duty
crushing of ores
and industrial
minerals. Built in
sizes from 30"
to 72" feed
openings.

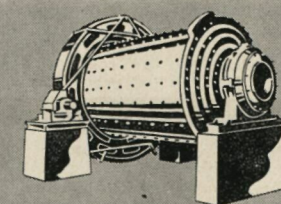


NORDBERG ENGINES . . . for fuel oil,
Duafuel® and natural gas operation.
Built in sizes from 10 to over 12,000
H.P. to meet practically all power re-
quirements.

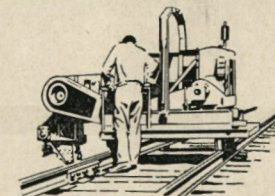
SYMONS CONE
CRUSHERS
"standard of the
world" for all
reduction crush-
ing require-
ments. Built in
sizes from 22"
to 7' diameter
heads with a
wide range of
capacity.



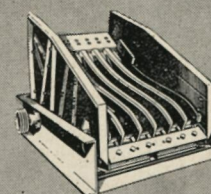
MINE HOISTS . . . in types for hoisting
both ore and men, in large coal and
metal mining operations.



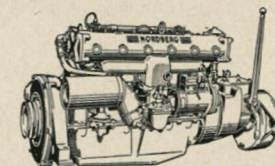
GRINDING MILLS . . . and other ma-
chinery for basic processing of ores and
minerals.



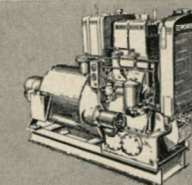
RAILWAY MAINTENANCE MACHINERY
. . . a full line of efficient, money-saving
machinery for top quality track main-
tenance.



SYMONS VIBRATING GRIZZLIES and
SCREENS . . . for all wet or dry scalping
and screening operations.



GASOLINE MARINE ENGINES . . . from
60 to 155 H.P. for fish boats, tugs, and
pleasure craft.



"PACKAGED" POWER UNITS . . . from
10 to 45 H.P.—6 to 30 K.W.—for gen-
erating electricity, pumping and straight
power applications.

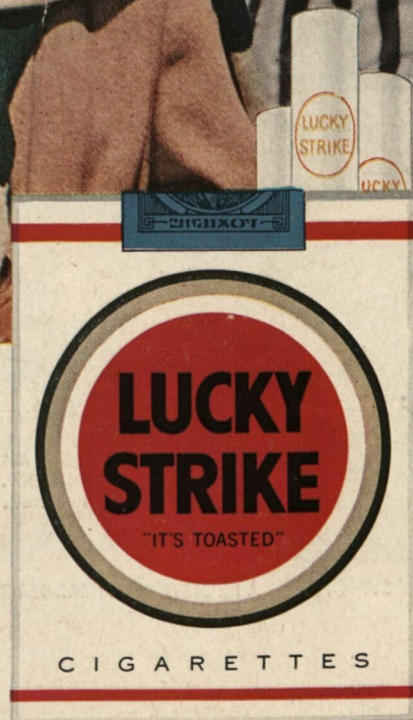
SYMONS . . . A REGISTERED NORDBERG TRADEMARK KNOWN THROUGHOUT THE WORLD

Light up a Lucky—
it's light-up time!



Luckies
Taste Better

Cleaner, Fresher, Smoother!



**"IT'S
TOASTED"**
to taste
better!