



9-29-1956

## September 29, 1956 Football Program, UOP vs. University of Kansas

University of Kansas

Follow this and additional works at: <https://scholarlycommons.pacific.edu/ua-football>

---

### Recommended Citation

University of Kansas, "September 29, 1956 Football Program, UOP vs. University of Kansas" (1956).  
*Football*. 236.  
<https://scholarlycommons.pacific.edu/ua-football/236>

This Book is brought to you for free and open access by the Athletics at Scholarly Commons. It has been accepted for inclusion in Football by an authorized administrator of Scholarly Commons. For more information, please contact [mgibney@pacific.edu](mailto:mgibney@pacific.edu).



OFFICIAL SOUVENIR PROGRAM

# KANSAS

UNIVERSITY OF KANSAS

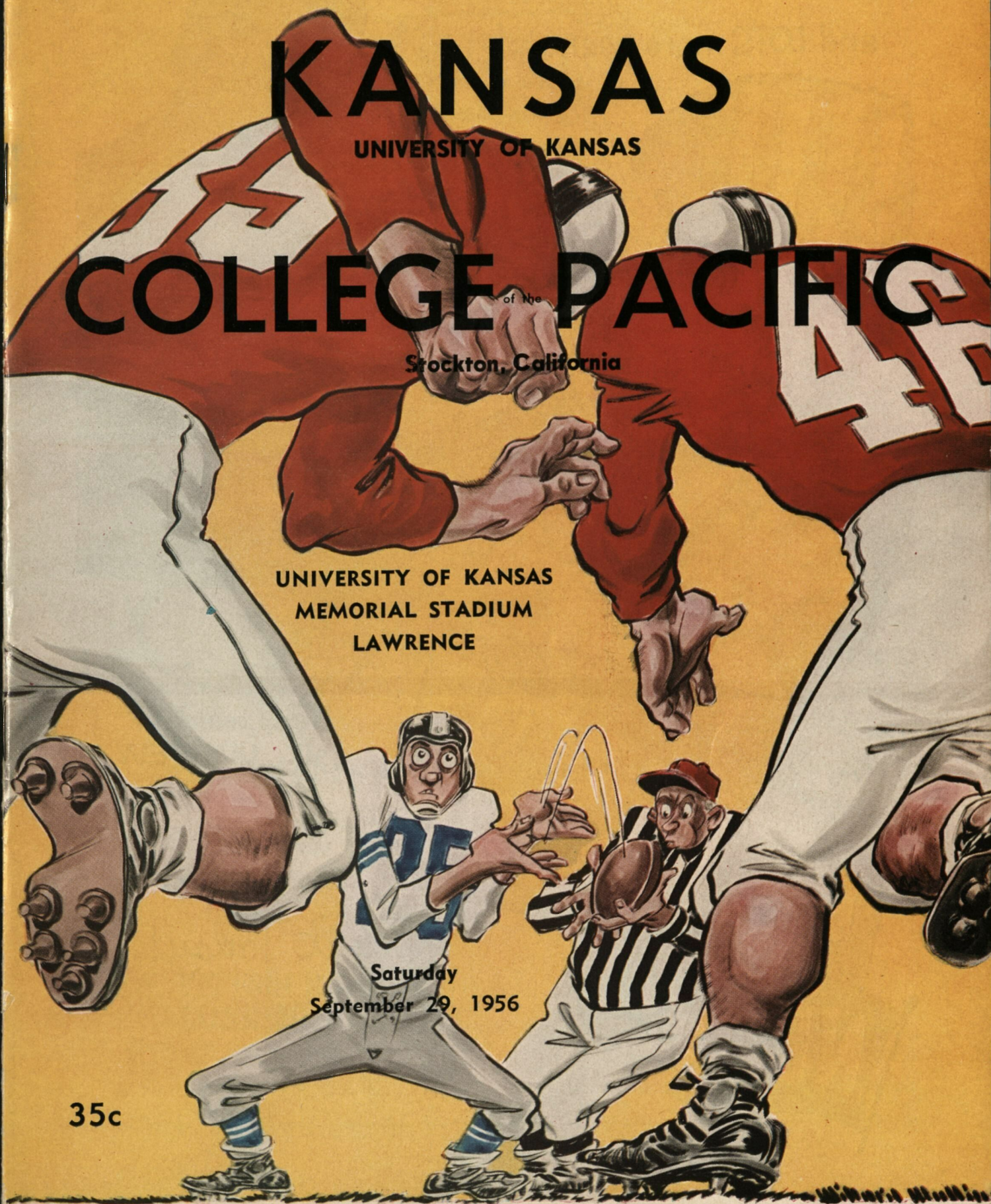
# COLLEGE PACIFIC

of the  
Stockton, California

UNIVERSITY OF KANSAS  
MEMORIAL STADIUM  
LAWRENCE

Saturday  
September 29, 1956

35c





So Fresh-So Crispy  
and LOTS more peanuts!



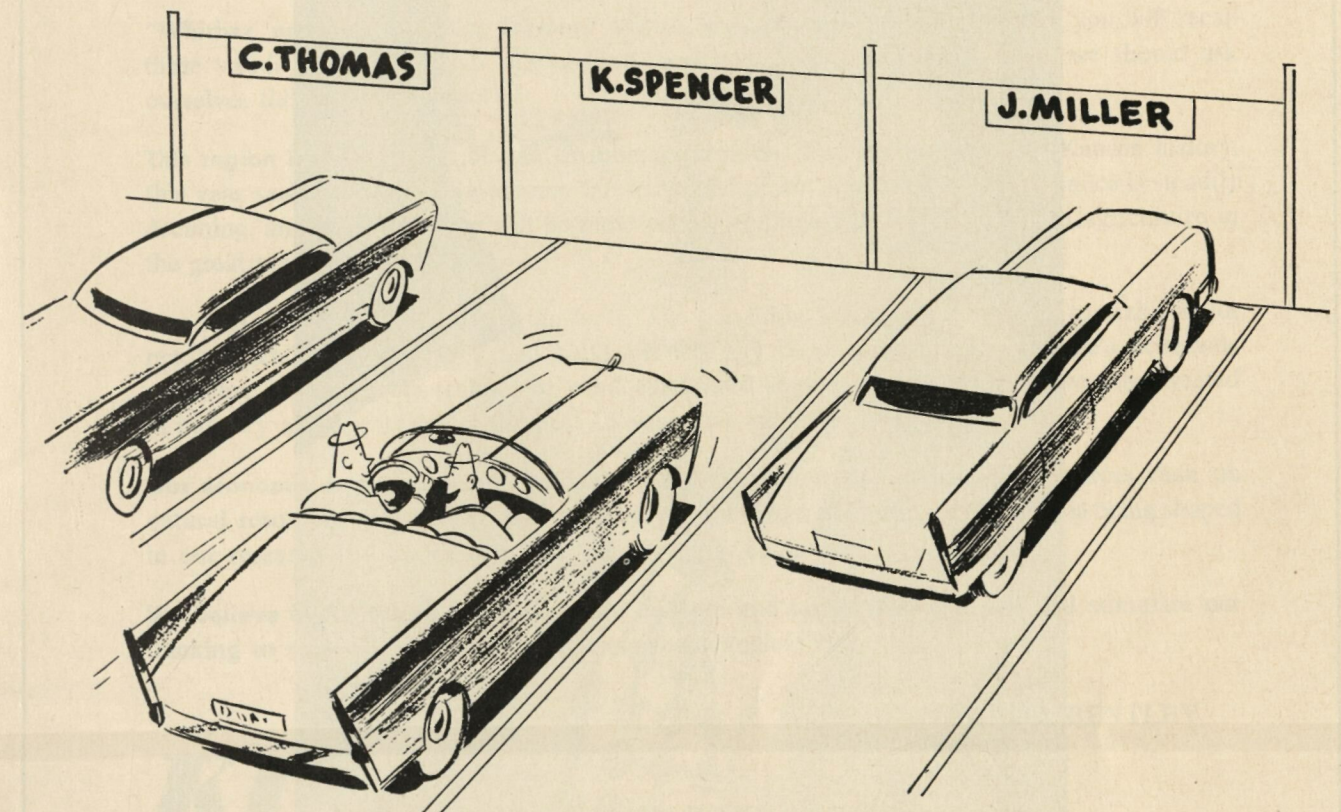
Best treat of  
all...the NEW  
**Cracker Jack**  
with lots  
more peanuts!

Try it Today!

**NEW** **Cracker Jack**



PARKING AREA



"It's OK to park in his stall - he's never around  
when KU plays at Lawrence!"

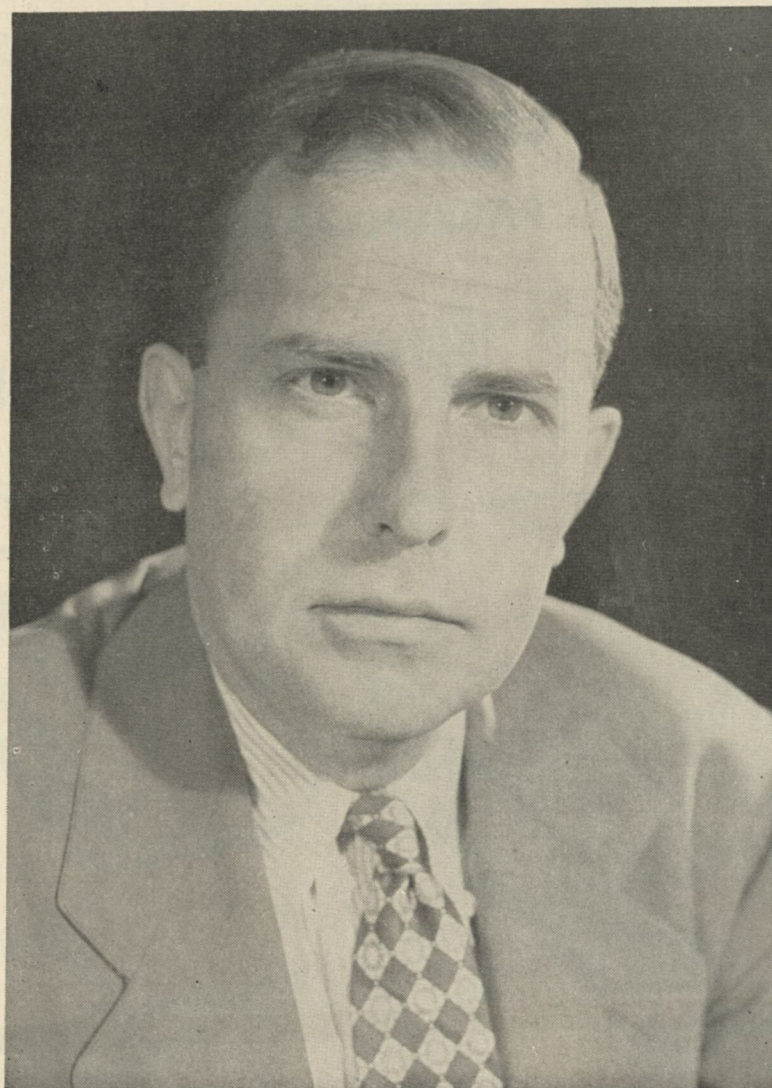
THE PITTSBURG & MIDWAY  
COAL MINING CO.

Since 1885 Processors of High Grade Coal



SPENCER CHEMICAL COMPANY  
America's Growing Name in Chemicals





The University of Kansas welcomes you back to your university on this day. Yes, your university, for K.U. belongs to many—the people of Kansas, our students, faculty, the thousands of alumni and friends over the state, the nation and indeed the world. We hope you will return many times in this and future years. When you do, I suggest that you visit the other parts of this beautiful campus. The stadium, important as it may seem this afternoon, is literally only at the edge of the campus and is but one of many component parts. K.U. is one of the major educational centers of the great midwest. It is our firm intention that, with your support, it will increasingly contribute to the relatively unlimited future of the State of Kansas and this area as a whole.

FRANKLIN D. MURPHY  
Chancellor



## Quo Vadis Agricola?

"Whither are you tending, farmer? Which way are you going?" Perhaps you will recall these words from your high school latin, and now here in Kansas in 1956 we should ask ourselves this same question.

**This region is in the midst** of a far reaching transition. For the first time in Kansas history, this year saw our agriculture income fall to second place. Agriculture predominance is steadily declining, and by 1960, there will be more people employed in industry than in agriculture in the great plains region.

**Our first step** should be to face the facts. The transition will require all of us to make major readjustments in our outlook and habits. It will not be easy to solve our state's economic problems. We are going to have to work extra hard at it, because for every two jobs created in industry and services over the past 15 years, we lost one in agriculture.

**Our economic development** may now be more dependent on intellectual resources than on natural resources. We believe that to a very great extent the future of this area is being shaped in our research laboratories and on our university campuses.

**We believe in the future of Kansas.** Our colleges and universities can and will stimulate our thinking to meet the needs of our present technological age.

HOWARD BENTLEY  
President

**KU.....** One of America's greatest universities.

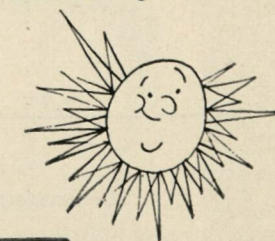
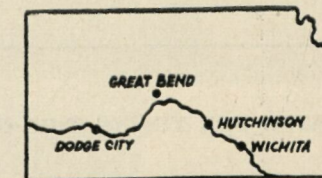


One of America's great names in heating and air conditioning for homes, business, and industry.

**Western SUPPLY COMPANY**

"Covering Kansas Like the Sunshine"

Four conveniently located wholesale houses, serving the contractors and retail merchants of Kansas with their complete stocks of nationally known brands of plumbing, electrical, heating, and air conditioning supplies.



"Neighbor, Wherever You Are . . . Specify Chrysler Airtemp, and We Both Get a Good Deal"



## TODAY'S GAME

Kansas will be exposed to another fabulous halfback today in College of Pacific's 185-pound sophomore, Dick Bass.

Not even Jimmy Swink, TCU All-American, carries more clippings than the COP left halfback Kansas tackles in this first all-time meeting between the two schools.

Consider this. During his high school and freshman career, Bass rambled for 74 touchdowns and averaged 13.5 yards per carry. In other words, he is worth three and a half yards more than a first down every time he touches the football.

In his varsity collegiate debut last Saturday night against Colorado A & M, Bass scored from eight and 26 yards away and netted 122 in 12 carries. That's still slightly better than a first down per run.

At 185, Bass, of course, is big enough to run over tacklers. He can generate this tonnage at tremendous velocity since he was clocked in :09.6 and :21.0, respectively, for the 100 and 220 as a freshman last year.

If the Jayhawkers can confine Bass as well as they did Swink they can take a large step toward their first victory of the 1956 season. Swink was restricted to 33 yards in 10 carries, lowest output in his last 12 games. However, the Jayhawkers fell victim to a revived Horned Frog aerial circus which netted 279 yards, and one touchdown while setting up the remaining four scores.

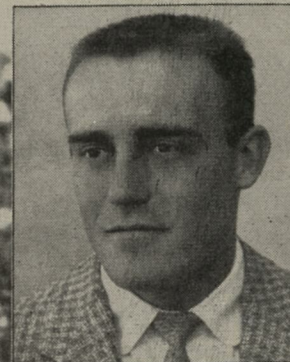
Kansas can expect the same sort of bombardment today. For COP, even with Bass, is tailored for passing. With four sharp-throwing quarterbacks, they completed 18 of 29 against A & M, for 268 yards. A week earlier this quartet hit 29 of 48 attempts in the Pac-Cats dress rehearsal scrimmage. They used only 58 running plays.

The Jayhawkers 3-2 against West Coast opposition having won singletons from Washington State, Los Angeles Loyola, and Santa Clara, while bowing twice to UCLA. All these games have been played since the war.

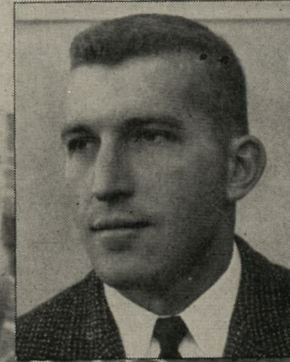
COP whaled Washington State, 30-0, last year, a month after Kansas beat the Cougars here, 13-0.

Represented for National Advertising by SPENCER ADVERTISING CO., INC. 271 Madison Ave., New York City

THE OFFICIAL WATCH FOR TIMING THIS GAME IS LONGINES — THE WORLD'S MOST HONORED WATCH



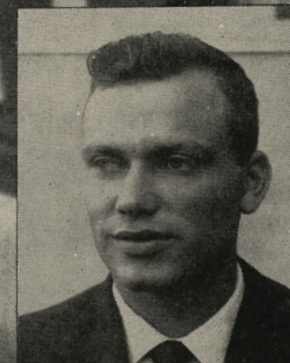
**LARRY CARRIER**  
H.S. Coach: Ed Bender  
St. John, Education



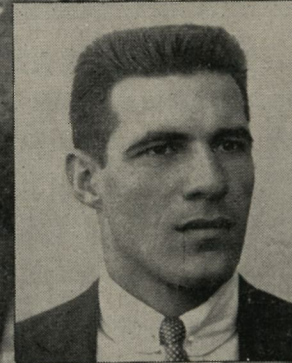
**TOM HORNER**  
H.S. Coach: Clark Shaffer  
Johnstown, Pa., Accounting



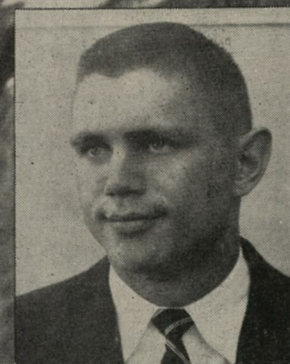
**FRANK GIBSON**  
H.S. Coach: Chuck Mather  
Lawrence, Ohio, Education



**CHARLEY McCUE**  
Coach: C. Woodard and A. Wollard  
Lawrence, Education



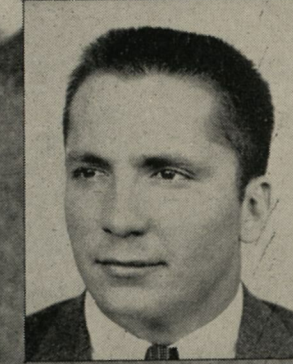
**GLENN SWENGROS**  
H.S. Coach: Tom Stanton  
St. Louis, Mo., Education



**BRUCE BRENNER**  
H.S. Coach: Chuck Mather  
Dalton, Ohio, Mech. Eng.



**LYNN MCCARTHY**  
H.S. Coach: Ted Miller  
St. Peter, Minn., Business



**ED PRELOCK**  
H.S. Coach: Tom Corbo  
Cleveland, Ohio, Personnel Adm.



## Lawrence Is Backing The Jayhawkers

### MILLER FURNITURE CO.

Dependable Home Furnishings

741 Mass. St.

### LAWRENCE SURPLUS

"The Original Army and Navy Stores"

749 and 935 Mass. St.

### Acme Bachelor Laundry & Dry Cleaners

For the Best in Laundry & Dry Cleaning

1111 Massachusetts

Call VI 3-5155

### DOUGLAS COUNTY STATE BANK

"The Bank of Friendly Service"

900 Massachusetts St.

Phone VI 3-7474

### STOP IN AT DUCK'S

824 Vermont

Sea Food — Steaks — Chicken

### BELL MUSIC CO.

Not just a music store but a

Jayhawk tradition

925 Mass. St.

When it comes to trimming we pick K.U.

### STADIUM BARBER SHOP

1033 Mass.

### GENERAL APPLIANCE CO., INC

General



Electric

1103 Mass.

Phone VI 3-0120

### DINGMAN'S FURNITURE

Upholstering - Custom Builds - Repairing

1801 Mass.

Phone VI 3-6722

### SNIDER COAL CO.

Phone VI 3-6088

200 Locust

### HANNA RADIO

933 Massachusetts

Phone VI 3-1821

### MALOTT'S HARDWARE

Hardware — Sporting Goods

736 Massachusetts

### Wolfson's

HERE YOUR CREDIT IS GOOD

—BULOVA—

—SAMSONITE—

743 Massachusetts

VI 3-4366

### Lawrence Typewriter Exchange

Office and School Supplies

"Year Around Service"—735 Mass.

### Compliments of

### BEN CARMAN

### FRITZEL-JAYHAWK DAIRY PRODUCTS

FOR HEALTH

834 Vermont

Chi Galloway

Phone VI 3-1911

Compliments of

### KEELER BOOK STORE

### NORMAN S. EDMONDS

Grocery

### BURGNER-BOWMAN-MATTHEWS LUMBER CO.

Building Materials — Coal

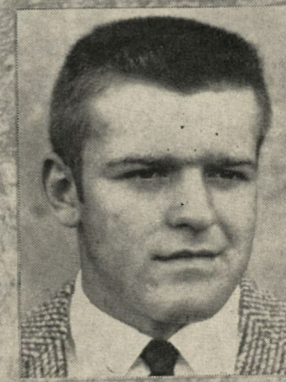
Where K. U. Students Meet

### ERNIE'S BLUE MILL

1009 Massachusetts



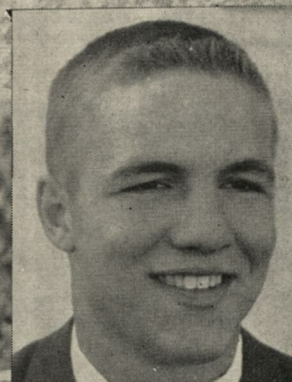
BILL HORN  
H.S. Coach: Lee Tressel  
Mentor, Ohio, Education



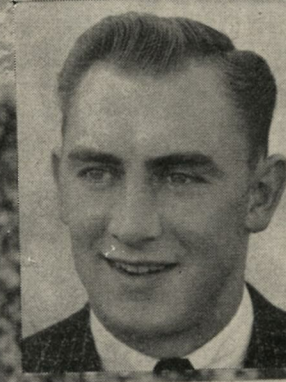
JIM HULL  
H.S. Coach: Stub Mayo  
Wichita, Aero. Eng.



BOB KRAUS  
H.S. Coach: Chuck Mather  
Massillon, Ohio, Liberal Arts



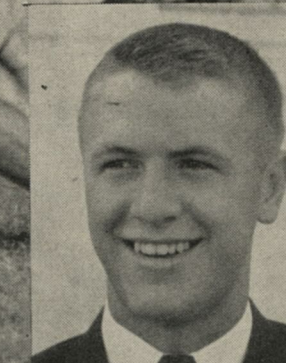
JIM LETCAVITS  
H.S. Coach: Chuck Mather  
Massillon, Ohio, Education



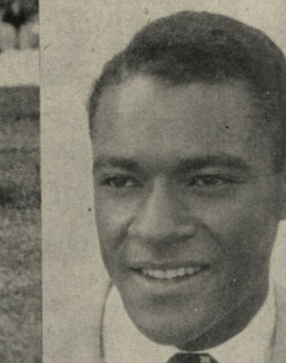
DAVE PRESTON  
H.S. Coach: Charles Riffle  
Warren, Ohio, Education



JOHN FRANCISCO  
H.S. Coach: Chuck Mather  
Massillon, Ohio, Education



WALLY STRAUCH  
H.S. Coach: John Fischer  
Elmhurst, Ill., Business



JOHN TRAYLOR  
H.S. Coach: Chuck Mather  
Massillon, Ohio, Business



## Lawrence Is Backing The Jayhawkers

### BRUNE PLBG. HTG. & ELECT. CO.

545 Indiana M. J. Huxtable, Jr. Phone VI 3-2910

### REEDY LUMBER CO.

Building Materials and Coal

Phone VI 3-1341 1846 Massachusetts St.

### SOL MARKS & SON

Jewelers

817 Mass.

### FIRST NATIONAL BANK

Jayhawkers Since 1877

F. D. I. C.

See Us for Airline and Steamship Tickets

DeSoto

Plymouth

### BUDDY GALLAGHER MOTOR CO.

632-34 Mass. Phone VI 3-6833

### HARWOOD'S MARKET

9th & Indiana

Phone VI 3-2311

### COLLEGE MOTEL

On U.S. Highways 40-59 & K-10

Leslie Halberg, M. Cohen

Phone VI 3-0131 Lawrence, Ks.

### DR. PEPPER BOTTLING CO.

815 N. H.

Phone VI 3-1441

### ROUND CORNER DRUG CO.

801 Mass.

Lawrence, Kansas

### DELUXE CAFE

Recommended by

Duncan Hines Adventures in Good Eating

Serving Daily 6 A.M. till 10 P.M.

711 Mass. St. OPEN SUNDAY Closed Monday

Finest in Footwear

A Kansas Institution

### ROYAL COLLEGE SHOP

837 Mass.

### DRAKE'S FOR BAKES

### ROWLAND'S

BOOK STORE

1241 OREAD

### UNIVERSITY MOTORS

707 New Hampshire

Phone VI 3-3722

CLIPPER — PACKARD

### RANEY DRUG STORE

909 Mass.

Phone VI 3-3521

RICHARD H. RANEY

### RANKIN DRUG CO.

Where Your Business Is Appreciated

1101 Mass. St.

Phone VI 3-5440

### LEONARD'S STANDARD STATION

TIRES, BATTERIES & ACCESSORIES

Washing and Greasing

Ninth & Indiana

Phone VI 3-9830

### BILL BODIN, INC.

Lincoln — Mercury

Ninth & Mississippi

### AUTO WRECKING & JUNK CO.

New and Used Parts for All Cars

Phone VI 3-0956

East End of 9th Street

### REEVES' GROCERY

Fancy Groceries • Quality Meats

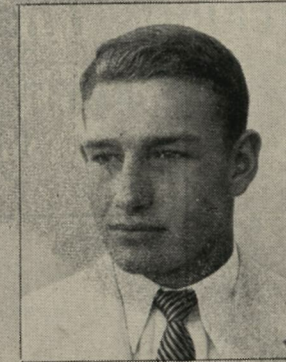
Phone VI 3 3771

900 Miss.



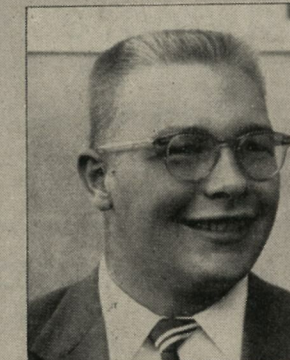
ERNIE RUSSELL

H.S. Coach: Chuck Mather  
Massillon, Ohio, Personnel Adm.



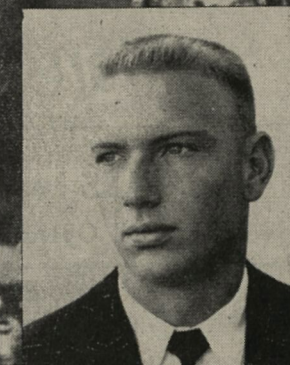
BOB MARSHALL

H.S. Coach: Bill Dallas  
Warrensburg, Mo., Civil Eng.



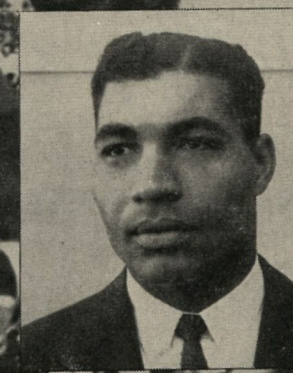
JOHN WERTZBERGER

H.S. Coach: Allan Weiland  
Lawrence, Pharmacy



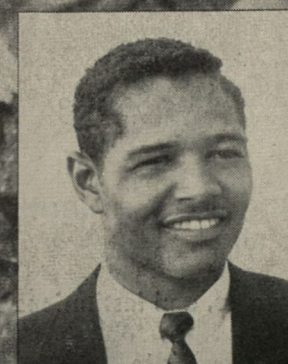
DALE REMSBERG

Coach: Dale and H. E. Stiles  
Iola, Education



TOM RUSSELL

H.S. Coach: Lowell Shaffer  
Grove City, Ohio, Education



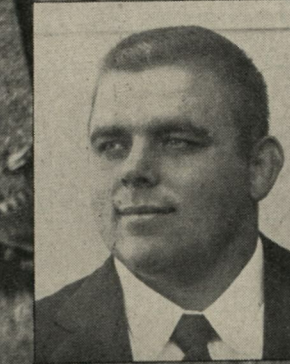
HOMER FLOYD

Coach: C. Mather and T. Harp  
Massillon, Ohio, Education



BOB HOESING

H.S. Coach: Al Blake  
West Point, Neb., Education



BOB LEWIS

H.S. Coach: Burl Stielham  
Bartlesville, Okla., Elec. Eng.



## Lawrence Is Backing The Jayhawkers

### GEMMELL'S CAFES

No. 1, 717 Mass.

### HAPPY HAL'S CAFE

E. 23rd

Phone VI 3-9753

### DAIRY QUEEN

1835 Mass.

### RAY T. WRIGHT & ASSOCIATES

Provident & Mutual Ins. Co.

Standard Life Bldg.

### COLES — RUSTY'S

2nd & Lincoln

23rd & La.

Your Local IGA Stores

### JAYHAWK CAFE

"Where the Students Gather"

1340 Ohio

## Wichita, Kansas Boosters

### DULANEY, JOHNSON & PRIEST

General Insurance

Wichita

### CHARLES M. COATS

Oil Operator

### SPINES CLOTHING CO.

Famous Brands for the Family

### DENNEY KLEPPER OIL CO.

### Dorth Coombs Insurance Co.

## Dodge City Boosters

### HARRY HART OIL CO.

### DODGE CITY GLOBE

### O. B. STATES

## Boyle Meat Co.

Purveyors of Famous K.C. Meats

Serving Hotels, Restaurants, and Institutions

Wire - Phone - or - Write

500 E. 3rd

Kansas City, Mo.

Victor 2-5852



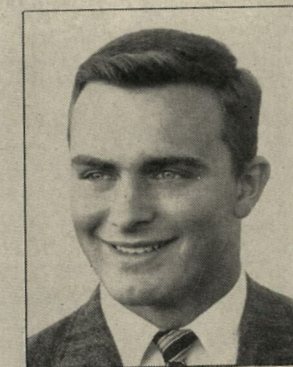
**TED ROHDE**

Coach: P. Peterson and H. Leame  
Hubbard, Neb., Accounting



**BOBBY ROBINSON**

H.S. Coach: Max Tompkins  
Peru, Education



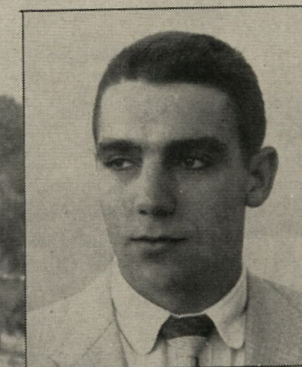
**PETE WHITENIGHT**

H.S. Coach: Allan Wo'ard  
Lawrence, Business



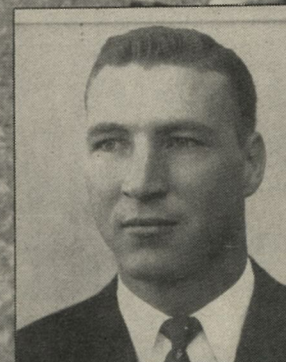
**JOHN QUENOY**

H.S. Coach: Leon Jursche  
Hays, Civil Eng.



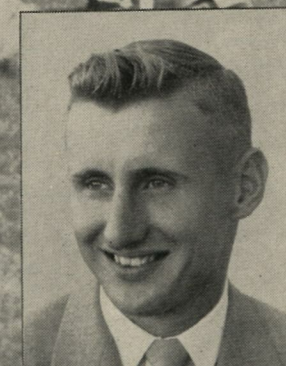
**WALTER SCHMIDT**

H.S. Coach: Dave Pritchard  
East Greenville, Pa., Education



**BILL BLASI**

H.S. Coach: Wally Smith  
Pratt, Education



**BOB CUNNINGHAM**

H.S. Coach: Otis Vaughn  
Assumption, Ill., Civil Eng.



**JERRY McINTOSH**

H.S. Coach: Bryan Sperry  
Chapman, Business



## Here's to a Successful Season KANSAS CITY, KANSAS BOOSTERS

### RIVERVIEW STATE BANK

Kansas City, Kansas

### THE GUARANTEE ABSTRACT, INC.

Escrows — Title Insurance

JOE F. JENKINS, Pres.

Title Bldg. - Kansas City, Kansas - DR. 1-0169

3105 Troost 100 West Maple

### GOLDMAN'S

QUALITY JEWELERS

Since 1886

648 Minnesota 1103 Walnut

### SHEPHERD'S

Fine Apparel for Men

714 Minnesota

### L. G. BARCUS & SONS, INC.

CONSTRUCTION

1430 State

### THE HOME STATE BANK

"At the sign of the Chime Clock"

Sixth and Minnesota Ave.

Member F.D.I.C. Insured Savings

### The Anchor Savings & Loan Assn.

Kansas City, Kansas, Ottawa, Mission

HOME LOANS — INSURED SAVINGS

Clarence T. Rice, Chmn. Bd. D. William Overton, Pres.

### COMMERCIAL NATIONAL BANK

"Home of the Drive-In Bank"

Minnesota Ave. at 6th

Member of FDIC

### SECURITY NATIONAL BANK

Seventh Minnesota

MEMBER OF FDIC

### MILLER INVESTMENTS, INC.

511 Huron Bld. — DR. 7750

HARRY G. MILLER, Pres.

### HARVEY DeGOLER

Prescription Druggist

6th & Minnesota Ave.

### THOMAS A. BIGGER

INSURANCE AGENCY

General Insurance — Surety Bonds  
917 North 6th, Home State Bank Building  
Kansas City, Kansas

### E. R. Callender Printing Co., Inc.

Lithographers & Printers Since 1893

CARBON FORMS

740 Nebraska Ph. DR. 1-0330 Kansas City, Ks.

### F. S. EDWARDS TOBACCO CO.

Kansas City, Kansas and Topeka, Kansas

'57 YEARS OF SERVICE'

### R. K. STILES & CO., INC.

Realtors — Insurers

903 N. 7th. - Kansas City, Kansas - DR 1-0535

### LEONARD CHILDERS

REALTOR — BETTER HOMES

Developer of Westfield

1024 Hoel Parkway DR. 1-1315 Kansas City, Ks.

### MERRIAM, ELLIS AND BENTON

Insurers and Realtors

Don F. Ellis, Dave Ellis, James Lowder, Don A. Ellis  
Kansas City, Kansas

### REAL ESTATE INSURANCE FINANCE NESSELRODE, BRIDGENS & CLAFLIN INCORPORATED

819 N. 7th Street MAYfair 1-4600

### JOS. W. RADOTINSKY

Kansas City, Kansas

### Joe Vaughan MEN'S CLOTHING

### GEO. J. SIEBERS & CO., INC.

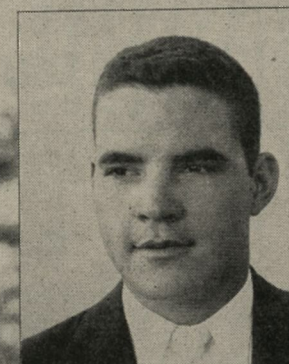
INSURANCE & BONDS

205 Security Bank Bldg. FA 1-2200



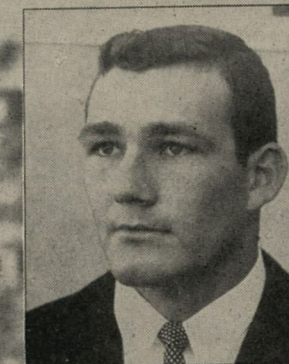
PAUL SWOBODA

H.S. Coach: Merv Baker  
Dupo, Ill., Education



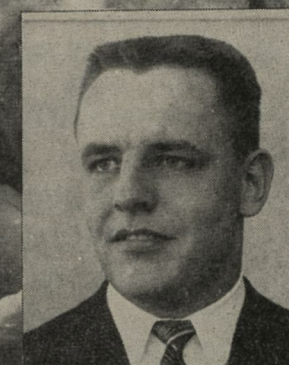
BILL DRYER

Coach: H. Klien and C. Dryer  
Great Bend, Pharmacy



RON CLAIBORNE

H.S. Coach: Bill Defee  
Amarillo, Texas, Civil Eng.



BRUCE BYNUM

H.S. Coach: Tommy Johnson  
Neodesha, Business



JOHN HUSAR

H.S. Coach: Ed Cody  
Chicago, Ill., Journalism



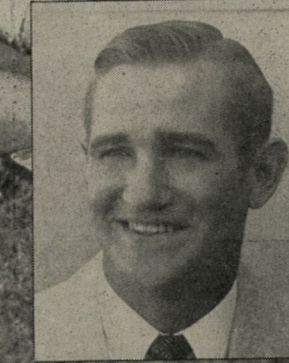
GRANT MILLER

H.S. Coach: John Fisher  
Elmhurst, Ill., Business



H. C. PALMER

H.S. Coach: Fred Chaffin  
Atchison, Pre. Med.



RAY LANE

H.S. Coach: Chuck Mather  
Massillon, Ohio, Education



## Kansas City, Missouri Boosters

### CHARLES A. ELLIOTT, C. L. U.

General Agent  
National Life Ins. Co. of Vermont  
Kansas City — Wichita — Joplin

### HARLAND B. HUTCHINGS

Realtors - Insurance  
1207 Grand Ave. Phone Grand 1-1007

### W. W. HOLLOWAY

Martin - Holloway - Belcher  
SECURITY DEALERS  
1002 Walnut Kansas City 6, Mo.

### HAROLD HOBART & CO.

Insurance Underwriters  
21 W. 10th St. Kansas City, Mo.

### ROOT GRAIN CO.

1430 Board of Trade  
Kansas City, Mo.

### MIDCONTINENT GRAIN CO.

KANSAS CITY, MISSOURI

ERNEST NEUER  
MOULTON GREEN, JR.  
J. W. "TWINK" STARR

MORTON M. JONES  
DANA DURAND  
CARY W. JONES

### R. B. JONES & SONS, Inc.

KANSAS CITY, MO.

### HARLEY J. SCOTT CO. ADVERTISING

T. G. MacLaughlin W. H. MacLaughlin  
1703 Wyandotte Kansas City, Missouri

### MAPLE RIDGE FARMS

Registered Polled Herefords  
Owned by Mr. and Mrs. George A. Clay  
Buckner, Missouri

### DAVIS-HUNT GRAIN CO.

1222 Board of Trade  
KANSAS CITY, MO.

### WINN-SENTER CONSTRUCTION CO.

901 West 43rd  
Plaza 3-1166

K.C., Mo.

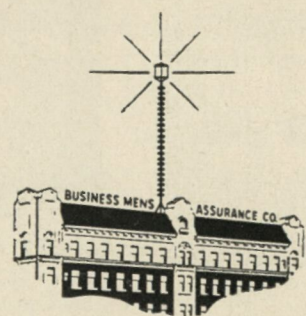
Larry Winn  
U. B. Senter

### WINN-RAU CORP.

Developers of Nall Hills

5407 West 103rd, Overland Park, Kan., NI 2-6000  
Gus Rau Larry Winn Larry Winn, Jr.

### What Does the BMA Beacon Say?



GREEN—FAIR  
ORANGE—CLOUDY  
ORANGE (flashing) RAIN  
WHITE (flashing) SNOW

Watch the lights on the tower run up for warmer, down for colder . . . and stationary lights mean no change. For income protection see your BMA representative.

### BUSINESS MEN'S ASSURANCE CO.

Home Office, B.M.A. Bldg., Kansas City 41, Mo.

LIFE • ACCIDENT • HEALTH • HOSPITALIZATION • GROUP

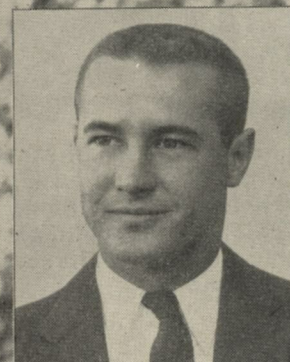
## CONSTRUCTION EQUIPMENT

SALE or RENTAL

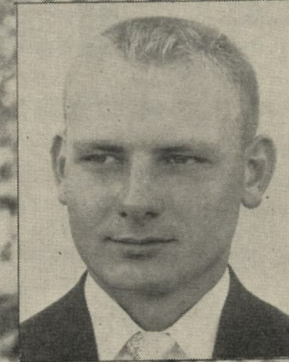
### Machinery & Supplies Co., Inc.

2000 Walnut

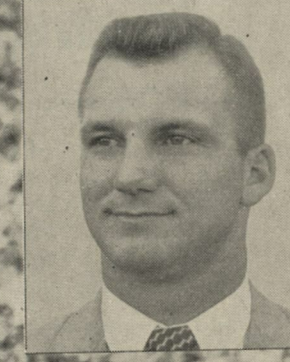
K. C., Mo.



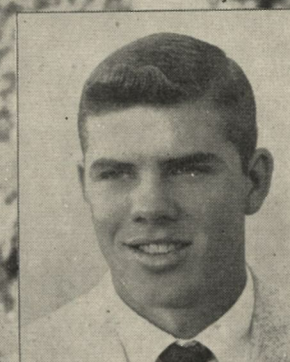
LARRY MCKOWAN  
H.S. Coach: Bob McCollum  
Oil City, Education



MARVIN MOLES  
H.S. Coach: Ed Ellis  
Kansas City, Education



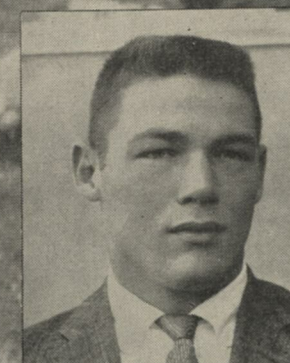
JERRY BAKER  
H.S. Coach: William Draub  
Minneapolis, Business



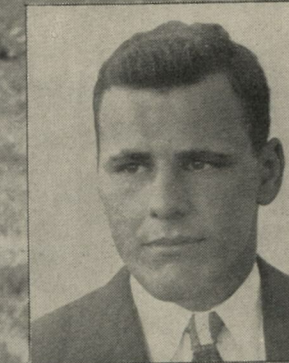
BUDDY MERRITT  
Coach: M. Garey and J. Tyree  
Ellis, Education



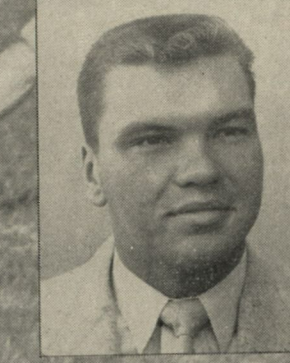
JIM BROOKS  
H.S. Coach: Robin Triday  
Wilmington, Ohio, Education



JOHN PEPPERCORN  
H.S. Coach: Harold Reade  
Mission, Business



JOHN BURKE  
H.S. Coach: Harold Reade  
Mission, Education



PETE GNAM  
H.S. Coach: Elmer Carpenter  
Hoisington, Civil Eng.



# Memorial Stadium Facts

## LOST AND FOUND

If you lose an article of importance at the game, contact Don Pierce, sports publicity director, at the press box immediately after the game. If the loss is not discovered until later you may call in person or communicate with the Athletic Ticket Office, Allen Fieldhouse.

If you find an article in the stadium area, turn it over to the usher in your section and he will turn it over to Mr. Pierce.

## CONCESSIONS

All concessions are operated by the Kansas University Athletic Department and the Kansas Memorial Union. Concession stands are located near the following entrances: 5, 6, 7, 12, 13, 17, 22, 28, 35, 45, 46.

Coke stands are located at the top of the stadium behind the following sections: 3-4, 7-8, 25-26, 33-34, 39-40, 43-44.

Concession prices are listed in the K.U. concessions advertisement below.

## COMFORT STATIONS

Twelve modern rest rooms are maintained in the stadium for the patrons attending games. Rooms for ladies are located near the entrances of section 7, 10, 19, 27, 28, and 40. Stations for gentlemen are located near the entrances of sections 8, 14, 20, 27, 36 and 44.

## FIRST AID

The first aid station is located at the entrance of Section 2 in the south corner of the west stadium. A medical doctor and nurse will be on duty throughout the game.

## TELEPHONE

A pay telephone is located between the entrances of sections 10 and 11. Telegrams may be phoned by dialing Operator and asking for Western Union.

## DRINKING AT GAMES

It is generally recognized that drinking has no place in intercollegiate sports. We are appealing to football fans and patrons to assist in eliminating this practice at football games.

## K.U. Concessions

## "Jayhawkers At Your Service"



OPERATED BY THE UNIVERSITY OF KANSAS  
ATHLETIC DEPARTMENT AND THE  
KANSAS MEMORIAL UNION

### ..... CONCESSION PRICES .....

Candy Bars .....	10c	*Programs .....	35c
Cigarettes .....	30c	Sno Cones .....	15c
Coffee .....	15c	Soft Drinks .....	15c
Cracker Jacks .....	15c	Sun Shades .....	25c
Hot Barbecue Beef Sandwiches .....	35c		
Hot Dogs .....	20c		
Pop Corn .....	15c	*Homecoming .....	50c

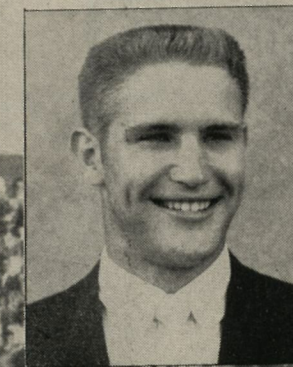
PAY NO MORE!



**BILL BELL**  
H.S. Coach: Ted Chitwood  
Raytown, Mo., Business



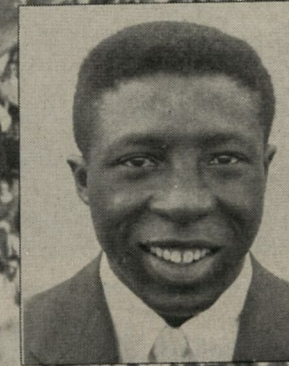
**GALEN WAHLMEIER**  
H.S. Coach: Archie Harmon  
Jennings, Education



**JOE HELD**  
H.S. Coach: Barney Hays  
Topeka, Education



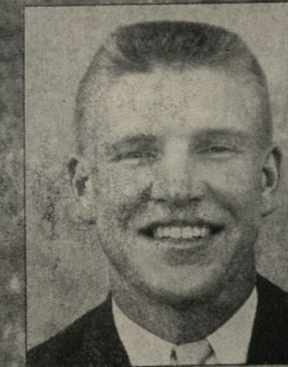
**FRANK BLACK**  
H.S. Coach: Allan Wolard  
Lawrence, Chem. Eng.



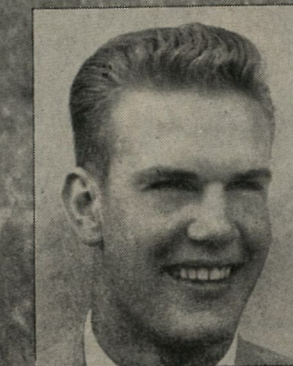
**AL STEVENSON**  
H.S. Coach: E. O. Salter  
St. Louis, Mo., Journalism



**DON PFUTZENREUTER**  
H.S. Coach: Ralph Bowyer  
Carlsbad, N. M., Education



**JOHN DRAKE**  
Coach: Bo Spoon and W. Jones  
Cassoday, Personnel Adm.



**DON MARTIN**  
H.S. Coach: Tom Bulkley  
Larned, Pre. Law



**OFFICIAL WATCH FOR**

- U. S. OLYMPIC COMMITTEE 1948-1952-1956
- NAT'L AERONAUTIC ASSN.
- NAT'L COLLEGIATE ATHLETIC ASSN. CHAMPIONSHIPS
- AMERICAN AUTO-MOBILE ASSN.
- NATIONAL SKI ASSN.
- AMERICAN POWERBOAT ASSN.
- AAU CHAMPIONSHIPS
- NATIONAL HORSE SHOW ASSN.

and many others

# Longines

THE WORLD'S MOST HONORED WATCH

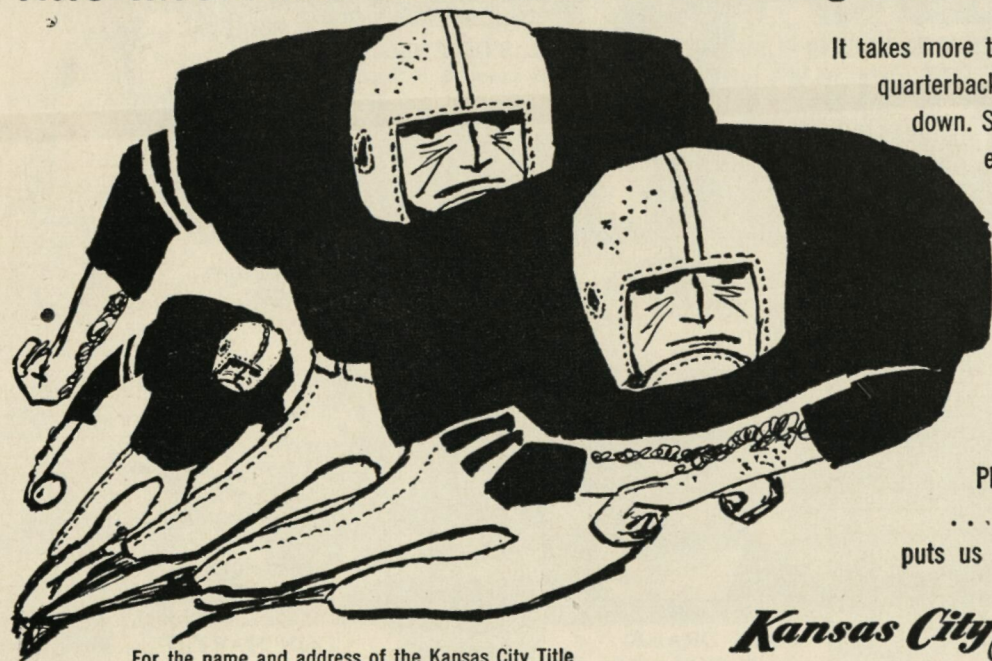
## Official Watch for the Kansas Games

Longines, first watch of sport, is recognized as official for timing world records and international events by all international sports and contest associations. Every Longines watch, for whatever its use, is made to be the best of its kind. For yourself, as a gift, no other name on a watch means so much as Longines, the world's most honored watch.

Longines watches to cope with outdoor life—fully protected against all common watch hazards. For her—Longines Skylark "A.P." For him—Longines Sportsman "D", each \$89.50. Other Longines watches from \$71.50.

*Longines Wittnauer Watch Company*

## Title Insurance Runs Interference Against Property Loss!



It takes more than cheers or a fleet-footed quarterback to score a winning touchdown. Somebody has to run interference. Likewise, you need more than a deed or an abstract when you buy real estate. Only TITLE INSURANCE protects you with "interference" against costly title claims that could throw you for a financial loss.

Play it safe **before** you invest . . . a single, low-cost premium puts us on **your** side for a lifetime!

**Kansas City Title Insurance Company**

For the name and address of the Kansas City Title issuing agent nearest you, call or write:  
**Joe F. Jenkins, State Agent**  
Guaranty Abstract Company, Inc.  
Title Bldg. • 727 Ann Ave. • Kansas City, Kans.

Title Bldg. 10th and Walnut HA. 1-5040  
Kansas City, Mo.  
Capital, Surplus and Reserves exceed \$1,000,000.00

### 1956 K.U. COACHING STAFF



Front Row (left to right) Dave Putts, Lauri Warttinen, Chuck Mather—head coach, Paul Schofer, Dick Piskoty. Second Row (left to right) Al Gebert, Wayne Replogle, Tom Triplett.

## Lee Kirkland Travel

1229-31 Baltimore

Victor 2-1110

Kansas City

## The Meade Company Insurance

Fire - Automobile - Surety Bonds  
Topeka, Kansas

**We Are Always Ready To Serve You**  
with Complete Warehouse Stocks of  
**ALUMINUM • BRASS • COPPER**  
**STAINLESS STEEL • GALVANIZED SHEET**

Complete stocks of aluminum, brass, copper, stainless steel and galvanized sheet are ready for you in our warehouse, as close as your telephone via our hurry-up service. It is the utmost convenience and economy for you to use our warehouse. Call us for prompt delivery on these metals. We are open Saturdays, too, till noon.



**YOUR PARTNER IN PRODUCTION**  
We are glad to help with your production problems. The technical staffs of our suppliers work hand in hand with us...



**EXTRA EQUIPMENT THAT LOWERS COSTS**  
Slitting, cutting, shearing, sawing and other specialized operations are money-saving services we offer to help lower your costs.

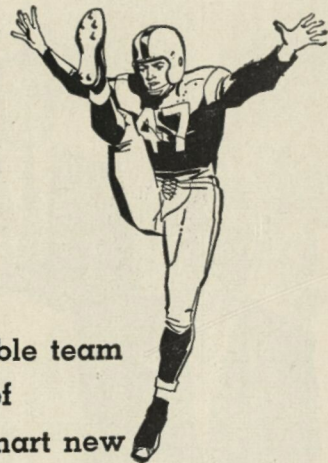


**Industrial Metals, Inc.**

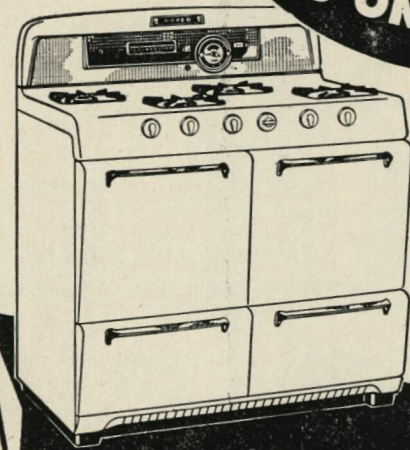
**ALUMINUM • BRASS • COPPER**  
**STAINLESS STEEL • GALVANIZED SHEET**

Kansas City 410 Southwest Boulevard Victor 2-1041  
Wichita 2028 Northern Street Amherst 2-1491





... giving you an unbeatable team  
... all the advantages of  
flame-kissed cooking plus smart new  
ranges that are automatic from top to bottom  
... real champions of cooking convenience!



See FOR YOURSELF AT YOUR DEALER'S, OR...

**The Gas Service Company**

LET  
**Long Bell**  
**"Tackle"**

your home  
remodeling  
problems...



'56 is the year to FIX!  
use the **Long Bell Budget Plan**  
NO DOWN PAYMENT 3 FULL YEARS TO PAY



**A. C. "DUTCH" LONBORG**  
DIRECTOR OF ATHLETICS

**Hutchinson**

**Dillons**  
J. S. DILLON & SONS STORES CO.  
HUTCHINSON, KANSAS

**DAVIS-CHILD CHEVROLET**

HAROLD R. BRANINE  
FRED C. LITTOOY  
CLAUDE E. CHALFANT  
WM. Y. CHALFANT



**D. C. "HAPPY" MARTINDELL**  
AB '10 LLB '12  
**ROBERT C. MARTINDELL**  
AB '48 LLB '49

**HARRY L. STEVENS**  
Stevens Inc.

**HENRY PEGUES**  
Pegues-Wright Dry Goods Co.

A. LEWIS OSWALD AB '21  
WILLIAM L. MITCHELL AB '48  
PATRICK H. THIESSEN AB '48 LLB '51  
ATTORNEYS

**A. D. RAYL MOTOR CO.**



## 1956 Kansas Roster

No.	Name	Pos.	Age	Ht.	Wt.	Class	Home Town
30	Baker, Jerry	FB	24	6-0	212	Jr.	Minneapolis
83	Bell, Bill	E	21	6-1	199	Sr.	Raytown, Missouri
51	Black, Frank	C	21	6-4	220	Sr.	Lawrence
80	Brenner, Bruce	E	22	6-2	201	Jr.	Dalton, Ohio
65	Brooks, Jim	G	22	6-0	214	Soph.	Wilmington, Ohio
61	Burke, John	G	19	5-9	187	Soph.	Mission
54	Bynum, Bruce	C	21	6-1	204	Jr.	Neodesha
23	Carrier, Larry	HB	22	6-0	197	Jr.	St. John
72	Claiborne, Ron	T	20	6-5	241	Soph.	Amarillo, Texas
81	Cunningham, Bob	E	19	6-3	197	Soph.	Assumption, Illinois
75	Drake, John	T	20	6-1 1/2	214	Sr.	Cassoday
70	Dryer, Bill	T	19	6-2	231	Soph.	Great Bend
33	Floyd, Homer	FB	20	5-10	164	Soph.	Massillon, Ohio
43	Francisco, John	HB	20	5-10 1/2	179	Jr.	Massillon, Ohio
71	Gibson, Frank	T	22	6-2	213	Jr.	Lawrence, Ohio
34	Gnam, Peter	HB	21	6-1	202	Soph.	Hoisington
31	Held, Joe	FB	21	6-2	208	Sr.	Topeka
20	Hoesing, Bob	HB	23	5-11	173	Soph.	West Point, Neb.
40	Horn, Bill	HB	22	5-11	190	Jr.	Mentor, Ohio
64	Horner, Tom	G	23	6-3 1/2	213	Jr.	Johnston, Pa.
79	Hull, Jim	T	20	6-1 1/2	220	Jr.	Wichita
77	Husar, John	T	19	6-4	233	Soph.	Chicago, Illinois
63	Kraus, Bob	G	21	6-2	212	Jr.	Massillon, Ohio
32	Lane, Ray	FB	24	6-0	179	Soph.	Massillon, Ohio
84	Letcavits, Jim	E	20	6-1	185	Jr.	Massillon, Ohio
66	Lewis, Bob	G	23	5-10	208	Soph.	Bartlesville, Okla.
13	Marshall, Bob	QB	18	5-11 1/2	186	Soph.	Warrensburg, Mo.
85	Martin, Don	E	22	6-3 1/2	212	Sr.	Larned
82	McCarthy, Lynn	E	23	6-1	190	Soph.	St. Peter, Minn.
41	McCue, Charles	HB	20	6-0	190	Jr.	Lawrence
10	McIntosh, Terry	QB	21	6-1	175	Sr.	Chapman
11	McKnown, Larry	QB	21	5-11	175	Jr.	Oil City
21	Merritt, Buddy	HB	19	5-10	170	Soph.	Ellis
86	Miller, Grant	E	18	6-4	185	Soph.	Elmhurst, Illinois
35	Moles, Marvin	FB	21	5-11	190	Soph.	Kansas City
24	Morris, Duane	HB	19	6-0	164	Soph.	Salina
88	Palmer, H. C.	E	19	6-2	194	Soph.	Atchison
87	Peppercorn, John	E	18	6-2	202	Soph.	Mission
69	Pfutzenreuter, Don	G	21	5-6	159	Sr.	Carlsbad, N.M.
73	Prelock, Ed	T	22	6-3	230	Soph.	Cleveland, Ohio
16	Preston, Dave	QB	21	6-0	190	Jr.	Warren, Ohio
67	Quenoy, John	G	19	6-1	176	Soph.	McCune
89	Remsberg, Dale	E	19	6-4	186	Soph.	Iola
25	Robinson, Bobby	HB	25	5-10	190	Soph.	Peru
44	Rohde, Ted	HB	25	6-2	190	Jr.	Hubbard, Neb.
45	Russell, Ernie	HB	22	5-7	170	Jr.	Massillon, Ohio
74	Russell, Tom	T	24	6-3	210	Soph.	Grove City, Ohio
53	Schmidt, Walter	C	18	5-10	193	Soph.	East Greenville, Pa.
60	Staab, Ervell	G	20	5-8	181	Jr.	Hays
12	Strauch, Walter	QB	20	6-0	180	Jr.	Elmhurst, Illinois
46	Stevenson, Al	HB	24	5-9 1/2	185	Sr.	St. Louis, Mo.
14	Swengros, Glenn	QB	24	5-10	164	Soph.	St. Louis, Mo.
68	Swoboda, Paul	G	25	6-0	212	Soph.	Dupo, Illinois
22	Traylor, John	HB	20	5-9	154	Jr.	Massillon, Ohio
55	Wahlmeier, Galen	C	22	6-0	210	Sr.	Jennings
50	Wertberger, John	C	19	6-3	225	Soph.	Lawrence
62	Whitenight, Pete	G	18	6-2 1/2	218	Soph.	Lawrence

# Congratulations to the 1956 Football Team

Compliments of

## American United Life Ins. Co.

Indianapolis, Ind. — Founded 1877

With 309 years of combined service by the following agents in this area.

JAMES T. BAILEY  
ROBERT M. BELISLE  
KALER E. BOLE  
DUANE R. BOWERS  
HAROLD M. BURKDOLL  
CHARLES CHIZEK  
B. J. CLEMENS  
RICHARD O. DONHAM  
CLYDE V. FISH, JR.  
DONALD R. FISH  
JACK B. FISHER  
TOM M. GREGG  
RICHARD B. HANGER  
ROBERT D. HANTLA  
DON HARRIS  
ARTHUR H. JONES  
ALBERT E. KAY

ROBERT A. KAY  
\*MORRIS M. KAY  
HENRY J. "BUD" LAUGHLIN  
EDWIN L. MAYS, JR.  
\*WILLIAM H. MARSHALL  
WILLIAM E. MULLINS  
EARL O'HARA  
ED OVERTON  
PERRY PORTER  
ROY A. PRATHER  
OTTO SCHNELLBACHER  
\*WES SANTEE  
C. A. A. SLEETH  
JOHN B. TATE  
\*JERRY TAYLOR  
FRANK J. WOLF, JR.

\* On Leave of Absence for duty with the Armed Forces



Live **M**odern, Boy...Smoke **L&M**!

My Chesterfields *Satisfy* the Most!



## KANSAS

### PROBABLE STARTING LINEUP

85	DON MARTIN	LE	10	McIntosh, QB	41	McCue, HB	69	Pfutzenreuter, G
71	FRANK GIBSON	LT	11	McKnown, QB	43	Francisco, HB	70	Dryer, T
69	DON PFUTZENREUTER	LG	12	Strauch, QB	44	Rohde, HB	71	Gibson, T
55	GALEN WAHLMEIER	C	13	Marshall, QB	45	Russell, HB	72	Claiborne, T
63	BOB KRAUS	RG	14	Swengros, QB	46	Stevenson, HB	73	Prelock, T
79	JIM HULL	RT	16	Preston, QB	50	Wertberger, C	74	Russell, T
83	BILL BELL	RE	20	Hoelsing, HB	51	Black, C	75	Drake, T
16	DAVE PRESTON	QB	21	Merritt, HB	53	Schmidt, C	77	Husar, T
43	JOHN FRANCISCO	LH	22	Traylor, HB	54	Bynum, C	79	Hull, T
40	BILL HORN	RH	23	Carrier, HB	55	Wahlmeier, C	80	Brenner, E
33	HOMER FLOYD	FB	24	Morris, HB	60	Staab, G	81	Cunningham, E
			25	Robinson, HB	61	Burke, G	82	McCarthy, E
			30	Baker, FB	62	Whitenight, G	83	Bell, E
			31	Held, FB	63	Kraus, G	84	Letcavits, E
			32	Lane, FB	64	Horner, G	85	Martin, E
			33	Floyd, FB	65	Brooks, G	86	Miller, E
			34	Gnam, HB	66	Lewis, G	87	Peppercorn, E
			35	Moles, FB	67	Quenoy, G	88	Palmer, E
			40	Horn, HB	68	Swoboda, G	89	Remsberg, E

### THE SQUAD

## C. of P.

### PROBABLE STARTING LINEUP

88	FARRELL FUNSTON	LE	10	Filice, QB	43	Grose, RH	71	Smith, LT
78	JOHN NISBY	LT	14	Reynosa, QB	45	Chatfield, RH	72	Vera, RT
61	GALEN LAACK	LG	15	Flores, QB	47	Perry, RH	73	Nichols, LT
54	JACK O'ROURKE	C	16	Whittier, QB	53	Ingram, C	74	Striegel, RT
67	BOB LEE	RG	20	Hicks, LH	54	O'Rourke, C	77	Montabana, RT
74	BILL STRIEGEL	RT	21	Peterson, LH	55	Rutter, C	78	Nisby, LT
86	BOB DENTON	RE	22	Bass, LH	56	Yamamoto, C	79	Leitaker, RT
14	JIM REYNOSA	QB	24	Metoyer, LH	60	Bateson, LG	80	Allerdice, LE
22	DICK BASS	LH	30	Coronado, LH	61	Laack, LG	82	Russell, RE
47	TOM PERRY	RH	31	Haggard, FB	63	Weaver, RG	83	Lane, LE
39	TOM GREEN	FB	32	Useton, FB	65	Mesistrano, LG	84	Cornell, RE
			33	Bossert, FB	66	Parks, RG	85	Wallace, LE
			39	Green, FB	67	Lee, RG	86	Denton, RE
			41	Larscheid, RH	68	Ortega, LG	87	Williams, RE
			42	Golenor, RH	70	Sartwell, LT	88	Funston, LE

### THE SQUAD

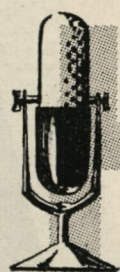


# Catch all the FOOTBALL ACTION



## The Topeka Daily Capital

For the tops in sports, read Dick Snider, Bob Hurt, V. L. Nicholson and Ken Nicholson's exclusive inside dope on all football and fall sports in Kansas' top sports newspaper.



## WIBW 580 on your dial

For top football reports, tune in E. C. "Ernie" Quigley and Dev Nelson — plus the Kansas State games every Saturday.

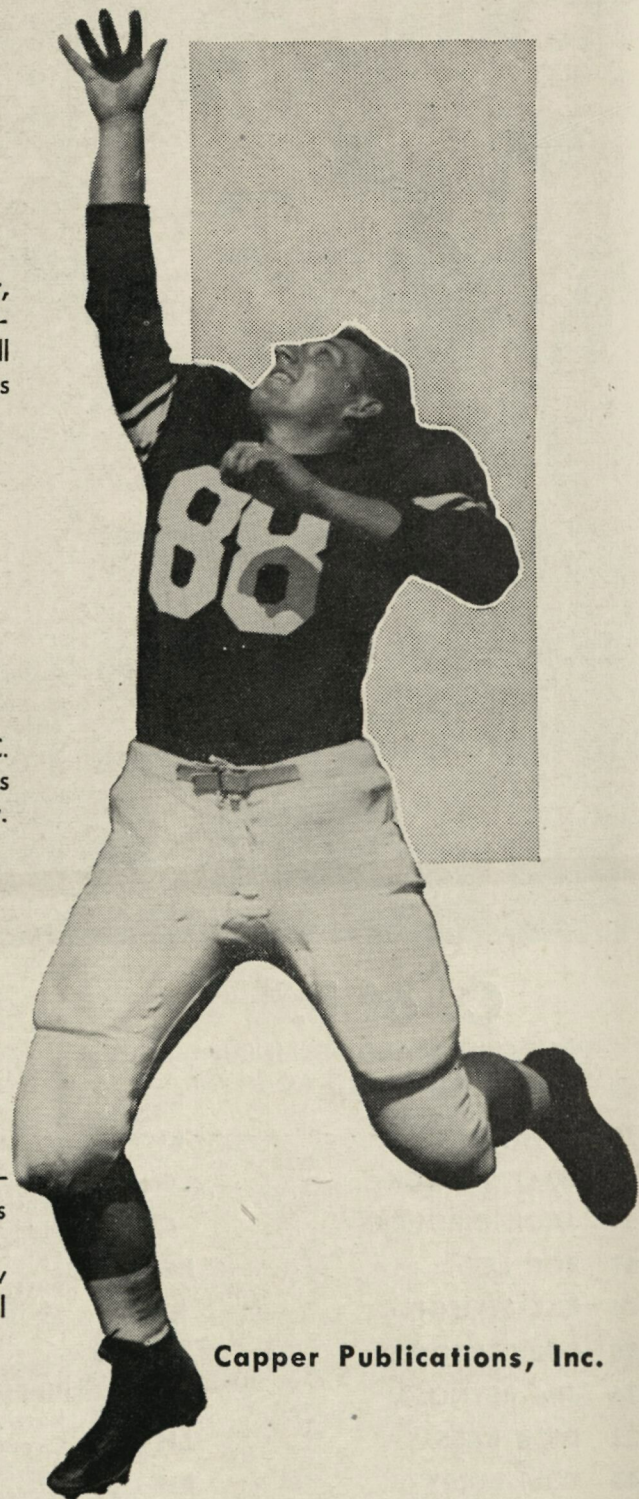


## WIBW-TV channel 13

Here's Channel 13's sports line-up — Dick Godlove, Monday evening; Bus Mertes, Tuesday evening; Chuck Mather, Thursday evening; — plus Dev Nelson and John Beatty. Pro football every Sunday afternoon.

Capper Publications, Inc.

Consult The Topeka Daily Capital for Radio and TV schedules



## 1956 College of the Pacific Roster

No.	Name	Pos.	Age	Ht.	Wt.	Class	Home
80	Allerdice, Lee	LE	24	5-9	180	Soph.	Snohomish, Wash.
22	Bass, Dick	LH	19	5-10	185	Soph.	Vallejo
60	Bateson, Dick	LG	19	6-0	186	Soph.	Wilmington, Del.
33	Bossert, Don	FB	21	5-11	185	Sr.	Lodi
45	Chatfield, Chuck	RH	19	5-11	185	Jr.	Sacramento
84	Cornell, Ken	RE	20	6-0	190	Sr.	Inglewood
30	Coronado, Bob	LH	19	6-2	180	Soph.	Vallejo
86	Denton, Bob	RE	21	6-4	224	Soph.	Stockton
10	Filice, Chuck	QB	20	5-9	165	Jr.	Santa Cruz
15	Flores, Tom	QB	19	6-1	185	Jr.	Sanger
88	*Funston, Farrell	LE	20	6-1	212	Jr.	Dixon
42	Golenor, Joe	RH	20	6-0	185	Jr.	French Gulch
39	Green, Tom	FB	21	5-11	190	Jr.	Long Beach
43	Grose, Dutch	RH	26	5-10	195	Sr.	Lake Worth, Fla.
31	Haggard, Chuck	FB	20	5-10	195	Soph.	Merced
20	Hicks, Bob	LH	20	5-11	180	Jr.	Janesville
53	Ingram, Jim	C	20	6-2	240	Soph.	San Rafael
61	**Laack, Galen	LG	25	6-0	221	Sr.	Abbotsford, Wis.
83	Lane, George	LE	22	6-3	220	Jr.	Los Banos
41	Larscheid, Jack	RH	22	5-6	154	Jr.	Pleasant Hills
67	**Lee, Bob	RG	20	5-11	205	Sr.	Concord
79	Leitaker, J. D.	RT	24	6-1	230	Jr.	Susanville
65	Mesistrano, Art	LG	19	5-11	240	Soph.	Brooklyn, N.Y.
24	Metoyer, Roger	LH	20	5-11	178	Jr.	Hawthorne
77	**Montabana, Frank	RT	21	6-0	213	Sr.	San Francisco
73	Nichols, Joe	LT	19	6-0	235	Soph.	Woodland
78	**Nisby, John	LT	20	5-11	230	Sr.	Stockton
54	**O'Rourke, Jack	C	20	6-1	207	Sr.	Burbank
68	Ortega, Tony	LG	21	5-10	185	Sr.	Stockton
66	Parks, Ben	RG	22	5-8	190	Sr.	Hollister
47	Perry, Tom	RH	22	6-1	186	Sr.	Oakdale
21	Peterson, Gene	LH	21	5-10	190	Jr.	Manteca
14	*Reynosa, Jim	QB	20	5-9	170	Sr.	Stockton
82	Russell, Matt	RE	23	6-3	215	Soph.	San Francisco
55	Rutter, Roland	C	25	6-2	210	Jr.	Hawthorne
70	Sartwell, Bob	LT	19	6-0	205	Soph.	Salinas
71	Smith, Ron	LT	22	6-0	205	Sr.	Chico
74	*Striegel, Bill	RT	19	6-2	222	Jr.	Chico
32	Useton, Ken	FB	20	5-11	195	Jr.	Cloverdale
72	Vera, Adrian	RT	18	5-10	215	Soph.	Stockton
85	Wallace, Pete	LE	23	6-0	185	Soph.	Pasadena
63	Weaver, Floyd	RG	22	5-11	210	Jr.	Stockton
16	Whittier, Del	QB	21	6-0	185	Jr.	Oroville
87	Williams, John	RE	23	5-8	195	Soph.	Chowchilla
56	Yamamoto, Mich	C	20	6-0	202	Jr.	Torrance

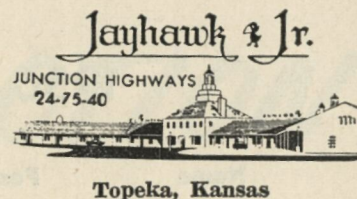
\*No. letters won.





**Hotel Jayhawk**  
SEVENTH and JACKSON STS.  
Topeka, Kansas

**BEFORE OR AFTER  
MAKE  
THESE OUTSTANDING  
HOTELS  
YOUR HEADQUARTERS  
FOR THE  
FOOTBALL GAMES**



**Jayhawk, Third**  
Junction City, Kansas

## GROWING...

*In Size*

*In Scope*

*In Service*

**Kansas' Largest  
Founded 1892**

**SECURITY BENEFIT LIFE  
TOPEKA**

**Constant  
Construction Co.**

Lawrence, Kansas

2nd & Perry

Phone VI 3-0711

**Best Wishes For A Successful Season**

**LAWRENCE ASS'N. MEN'S WEAR RETAILERS**

**OBER'S**  
821 Mass.

**GIBBS**  
811 Mass.

**CARL'S**  
905 Mass.

**MIKE NICHOLS**  
843 Mass.

**THE TOWN SHOP**  
841½ Mass.



Let's Both Be First



**MORGAN-MACK  
Motor Co.**

Phone VI 3-3500

Lawrence, Kansas

COMPLIMENTS OF



**Westvaco Mineral Products Division**

**FOOD MACHINERY AND CHEMICAL  
CORPORATION**

Lawrence, Kansas

Let the Sign of the...  
**NOURSEMAN**



be your  
**GUIDE**  
to  
**Quality**

**"BUSINESS IS GOOD"**  
Kansas City 8, Missouri

**Jayhawk  
Boxes**



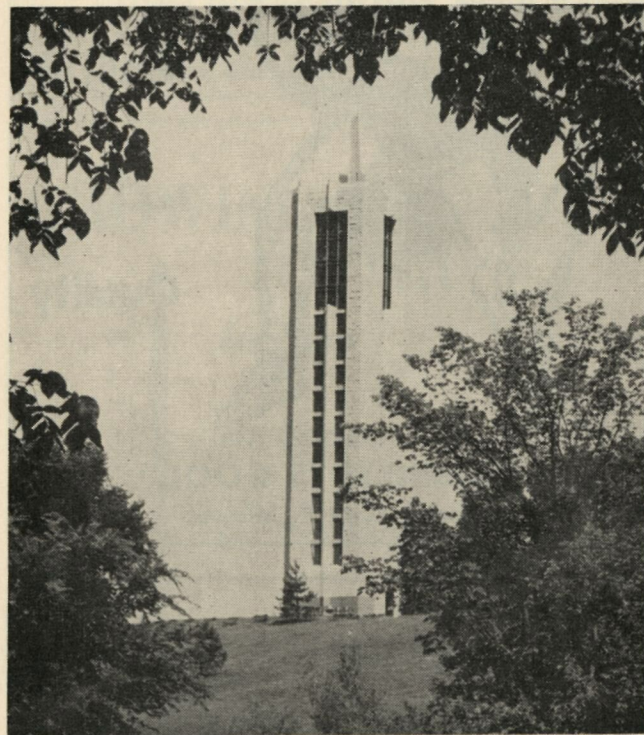
Proudly carrying  
**the name of Jayhawk**  
to every corner  
of the world

**Lawrence Paper Company**

Lawrence, Kansas



## SOMETHING ABOUT K.U. ....



K.U.'S MEMORIAL CAMPANILE

That tower on the Mount Oread promontory south of Memorial Stadium is the University's World War II Memorial Campanile (pronounced cam-pan-ee'-ly). It and the Memorial Driveway were completed in 1951. More than 8,000 alumni, students, faculty and friends contributed \$343,000 for the combined projects.

The campanile base is 105 feet above the stadium playing field. The tower itself rises 120 feet from a base 22 ft., 9 ins. in diameter. It is of re-inforced concrete with outer walls of mixed Cottonwood, Silverdale, and Junction City limestone.

In the Memorial Room on the ground floor are inscribed in Virginia Greenstone, the names of 276 K.U. men and women whose lives were taken in World War II. The bronze memorial doors were sculptured by Kansas' own Bernard "Poco" Frazier, who as an undergraduate

won many distance runs in this stadium and who now is the distinguished sculptor-in-residence at the University. The six panels of the north doors depict significant aspects of Kansas history. The theme on the south concerns the emotions and ideals of humanity in war.

In the campanile is a carillon of 53 bells, each inscribed in honor of some individual or group. The largest bell weighs nearly 7 tons, the smallest about 10 pounds. The great bell is 7 ft., 2 ins. in diameter; stands 5 ft., 9 ins. high; has the tone of F sharp. The carillon runs the chromatic scale nearly  $4\frac{1}{2}$  octaves.

The K.U. carillon is seventh in size among the nearly 70 carillons in North America. Its  $36\frac{1}{2}$  tons of bells were cast in England at a cost of about \$78,000. The bells are an alloy of pure copper and tin; they do not deteriorate in pitch or tonal quality.

The bells do not swing when played; rather clappers are suspended inside the bells and are moved by a system of levers connected with the playing mechanism, the clavier.

There are five distinct tones in every carillon bell, the fundamental or Strike Note; and four harmonics or overtones. Because of the unusual harmonics in the bells and the persistence of the tones carrying over after the bells have been struck, carillon music seems strange upon first hearing. It also requires skilled arranging by the carillonneur to prevent discords.

A carillon is not to be confused with chimes, which normally consist of 15 or fewer bells.

The carillon keyboard, called a clavier, is like that of an organ, except the keys are larger and more widely spaced. Each key, which actually is a wooden baton or lever, when depressed pulls down a wire connected to the clapper hanging inside the respective bell. The carillonneurs sometimes strikes the keys with the side of his closed hand, at times with the fingers. The clavier also has pedals. Using both feet and hands the carillonneur can strike eight or more notes simultaneously.

Ronald Barnes is the K.U. carillonneur. He plays recitals at 3 p.m. Sundays and 7 p.m. Wednesdays when the University is in session. He also plays a brief recital daily following the final morning class.



We're for You...  
**JAYHAWKERS**  
In Every Game  
of the Season!



**SERVING KANSAS  
FOR 30 YEARS!**

- TOPEKA
- KANSAS CITY
- NORTON
- GARDEN CITY

*"If It's Glass . . . Acme Has It!"*

**PROVEN  
PERFORMANCE**

**New Skelly  
Supreme Gasoline with**

**Keotane\* offers**  
**14.6%** **3 EXTRA OCTANE POINTS** **12.7%**  
**MORE POWER PERFORMANCE EFFECT MORE MILEAGE**



Exhaustive laboratory tests, many miles of road tests and now . . . tested and approved by thousands of motorists . . . that's Keotane!

Try Keotane today. You'll be surprised just how much pure driving pleasure your car can deliver!

**SKELLY OIL COMPANY**

**TULSA • KANSAS CITY**

\*(Trademark Skelly Oil Company)

## "Billy" Hutson's Hotels

1000 Rooms in Kansas,

Missouri, Colorado, and Wyoming

**HOTEL BROADVIEW**  
Wichita

**HOTEL STATE**  
Kansas City, Mo.

**HUTSON  
ELDRIDGE HOTEL**  
Lawrence

**HOTEL  
BOULDERADO**  
Boulder

BILLY HUTSON, PRES.-OWNE  
R. C. MCCORMICK, SEC.-TRES.  
MIKE GETTO, MGR., ELDRIDGE HOTEL

**MEADOW BROOK LODGE**  
Jackson, Wyoming

BILLY HUTSON, JR., Mgr. and Owner



Compliments of  
**Hallmark Cards**

Career opportunities for both men and women graduates . . . business . . . sales . . . art . . . writing.

For specific information write to Personnel Director, Hallmark Cards, Kansas City, Missouri.



"When you care enough to send the very best."



### Kansas City Suburban Water Company, Inc.

5916 Dearborn

Mission, Kansas

### Rudy-Patrick Seed Co.

Kansas City, Mo.

Hutchinson, Kansas

### Pensinger's

Fire Hydrants and Valves  
Mechanical Rubber Goods  
Steam Specialties  
Small Cutting Tools

FULL LINE

1609 Oak Street — Kansas City 8, Mo. — HA. 1-1737

### Greenlease-O'Neill

*"Your Kansas City Oldsmobile Dealer"*

1414 Baltimore

HA 1-4838

### Newlin Machinery Corp.

Construction Machinery

Kansas City

### Central States Grain Co., Inc.

Board of Trade Bldg.

Kansas City, Missouri

Wes Fuller, Pres.

### Sutherland Lumber Co.

Kansas City

Wichita

### Hart Grain Company

Board of Trade Bldg.

Kansas City, Mo.

Jim Hart

Ken Hart

Gaylord Hart

### LANGDON SUPPLY COMPANY

Distributors

Precision Tools

Industrial Rubber Goods

Rex Baldwin Chains — Transmission Supplies

Pyrene CO<sup>2</sup> Fire Extinguishers

1317 Union Ave.

Kansas City 1, Missouri

Phone VICTOR 2-6245

### Meservey-O'Sullivan Grain Company

968 Board of Trade Bldg.

Kansas City, Missouri

Sam Darrough

Ed Meservey

### Munns Medical Supply Co.

TOPEKA, KANSAS

KANSAS CITY, MO.

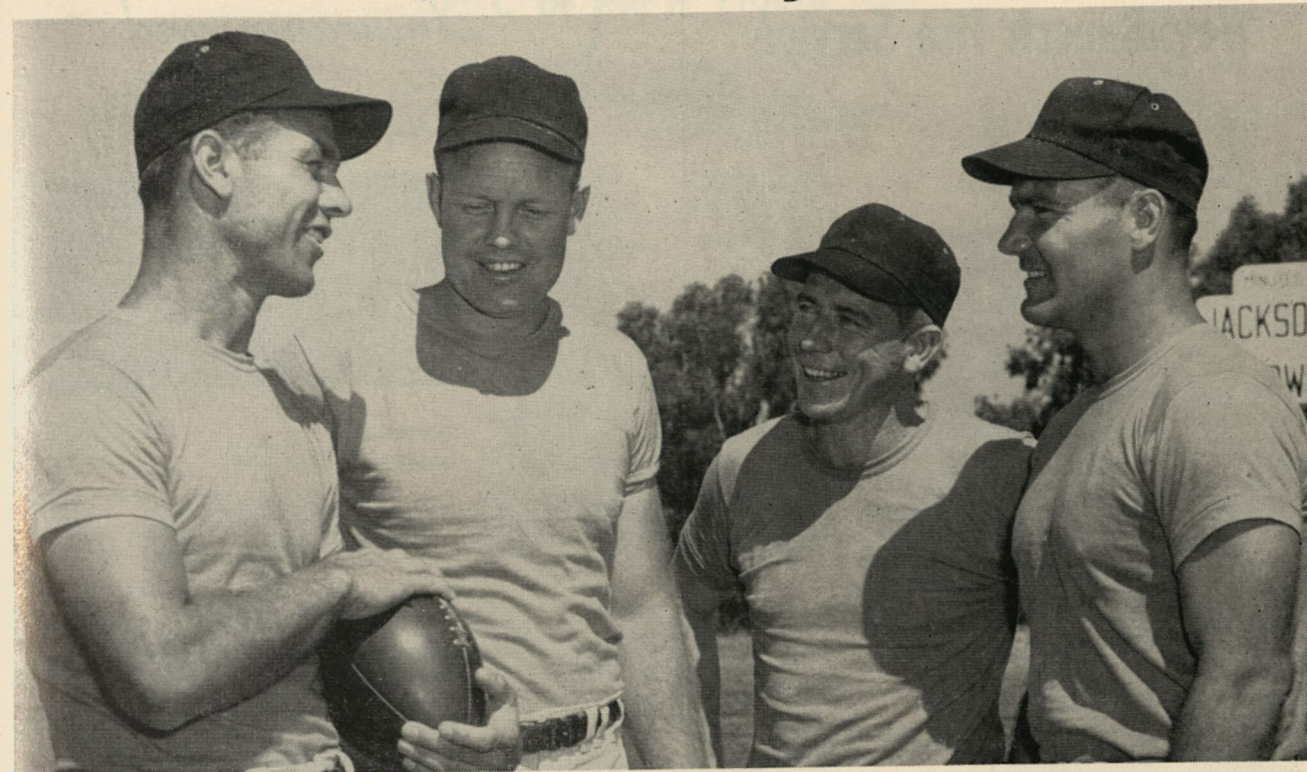
### The Ashton-Richards Co., Inc.

BROWN ALUMINUM TRAILERS

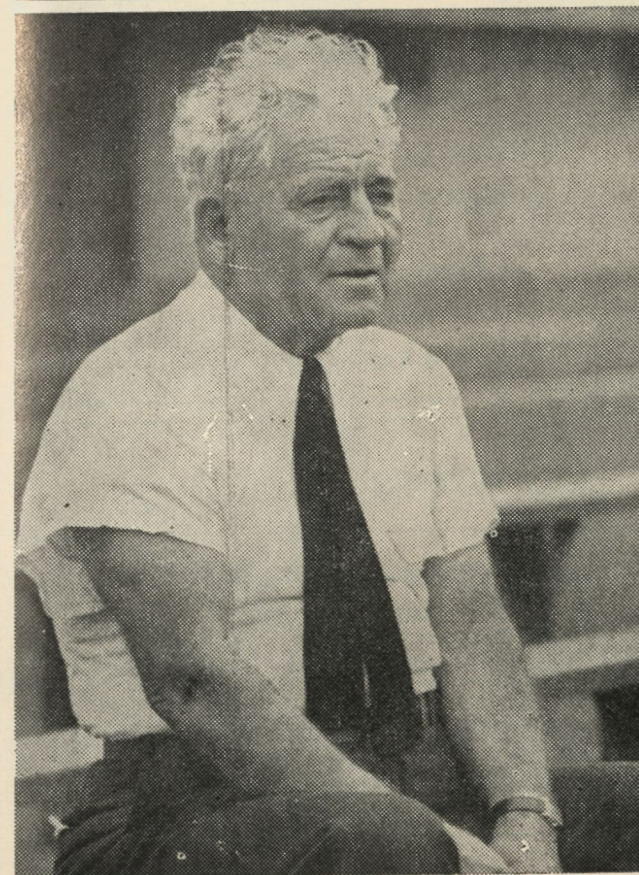
AND TRUCK BODIES

Kansas City, Mo.

## C of the P Coaching Staff



Left to Right—Head Coach Jack "Moose" Myers, Ass't Coach John Rohde, Backfield Coach Gene "Skip" Rowland, Line Coach John Nikevich.



### AMOS ALONZO STAGG

By Leo Fischer, Sports Editor, The Chicago American President  
of the Football Writer's Association of America

No matter how capable or fluent those of us in this sports-writing business may be, now and then we encounter something for which we find words entirely inadequate.

Such a task, for instance, as trying to write a "tribute" to Amos Alonzo Stagg.

As a theological student, as a great undergraduate pitcher and football player at Yale, as a football coach at Chicago for forty years and elsewhere for twenty more, as a life member of the Football Rules Committee since its origin, as a devoted husband for more than 60 years to an equally devoted wife, as the head of a gracious family, and as a loyal friend he has accomplished in his one lifetime the goals for which all of us strive.

As long as we can remember, Amos Alonzo Stagg has been an inspiration not only to athletics, but to the entire American way of life. All of us—writers, coaches, players, officials and fans—join in paying him this homage.



## Weyl-Bausch Tire Service

"Don"

"Pete"

1st & Waco, Wichita, Kansas

Ph. 3-5738



"Pete" Bausch  
Class '32

## Kelley Springfield Tires

The Best Place to Celebrate

## The TROPICS

with all the lures of the South Seas



KANSAS CITY, MO.

## Insurance and Surety Bonds

## SPEED WARNER, INC.

Kansas City  
Telephone: Victor 2-6700

Topeka  
Telephone 2-7255

Jefferson City  
Telephone 5-1021

Affiliate:  
PLAZA INSURERS, Inc.  
Kansas City  
Telephone: Jefferson 1-3340

In Kansas City

It's City National

"KANSAS CITY'S FAVORITE BANK"

## CITY NATIONAL

Bank & Trust Co.

10th and Grand

Member Federal Deposit Insurance Corporation

## Great Bend Boosters

### HARM-BURT DRILLING CO.

Rotary Drilling

Herb & Allan Harms

Harold & Duke Burt

### McMULLEN LAUNDRY & DRY CLEANERS

### MULLEN FURNITURE CO.

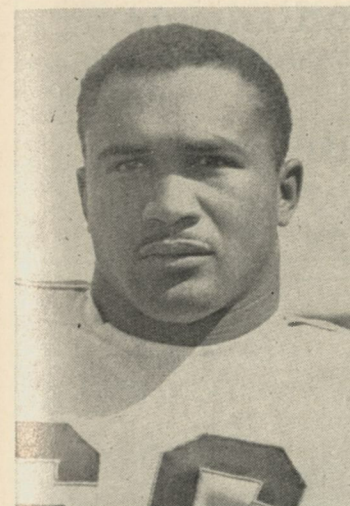
SEVEN STORES

Great Bend — Dodge City — Garden City  
Larned — Pratt — Liberal — Lamar, Colo.

### THE BENTLEY HARDWARE CO.

Supplies for Farms and Industry

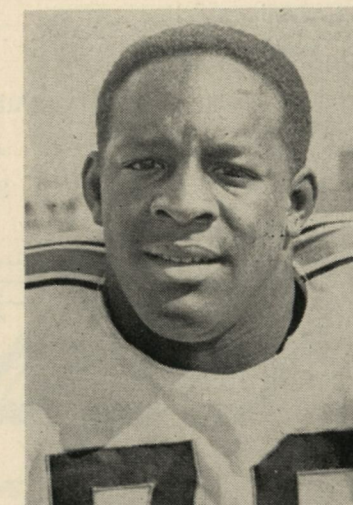
## C of the P Tigers



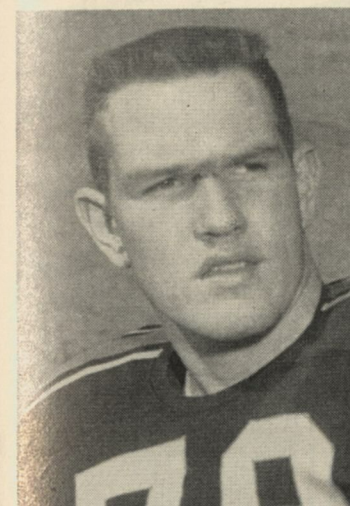
JOHN WILLIAMS



GENE PETERSON



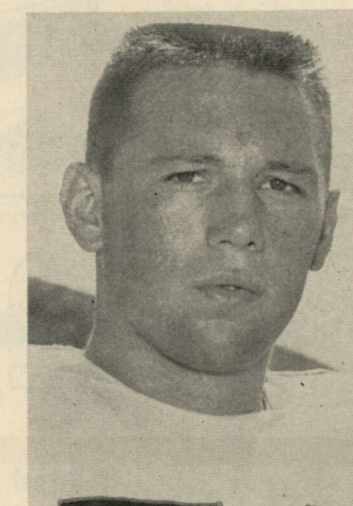
JOHN NISBY



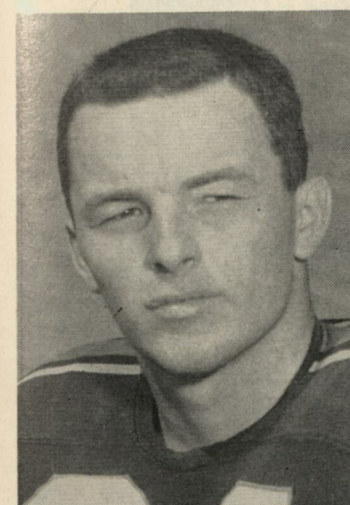
BILL STRIEGEL



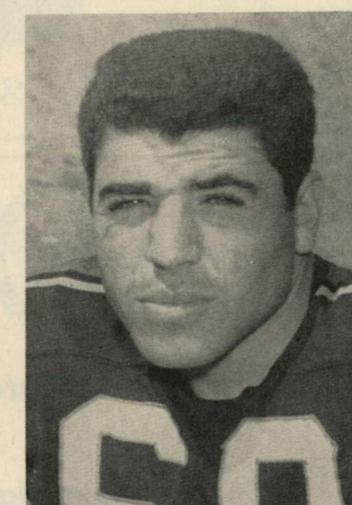
BOB DENTON



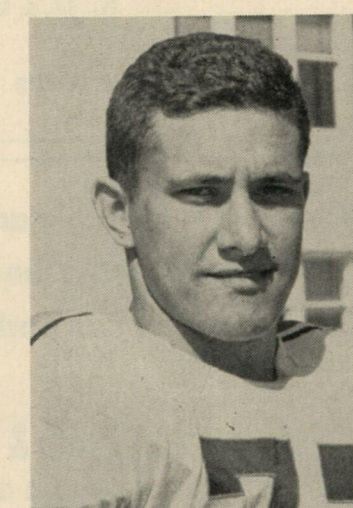
BOB LEE



JACK O'ROURKE



TONY ORTEGA



FRANK MONTABANA



### Administrative Staff

A. C. Lonborg.....Athletic Director  
 Dean DeWitt Carr.....Faculty Representative  
 Earl Falkenstien.....Athletic Business Manager  
 Floyd Temple.....Assistant to the Director  
 Don Pierce.....Sports Publicity Director  
 Jack Eskridge.....Equipment Manager

### Salina Boosters

#### BOLEN-WOOD AGENCY

REAL ESTATE — LOANS — INSURANCE

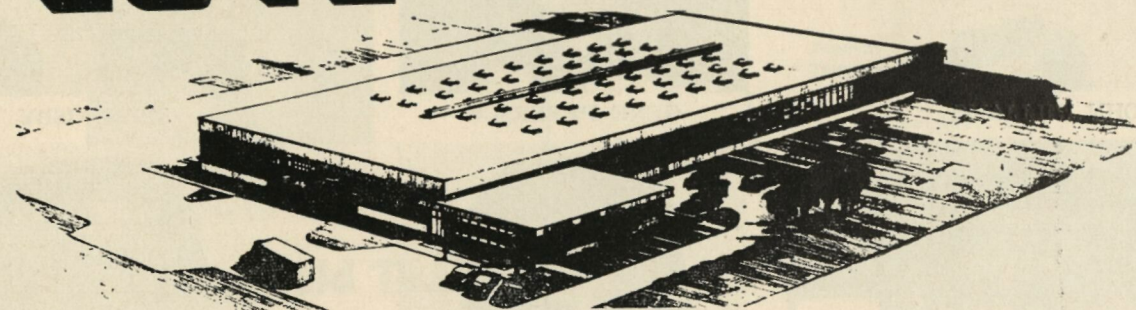
Dan Bolen

Leonard Wood

#### STOREY-HARRIS TIRE CO.

**GOOD YEAR**

**LOVE BOX COMPANY, INC.**  
 700 EAST 37TH STREET NORTH . . WICHITA, KANSAS

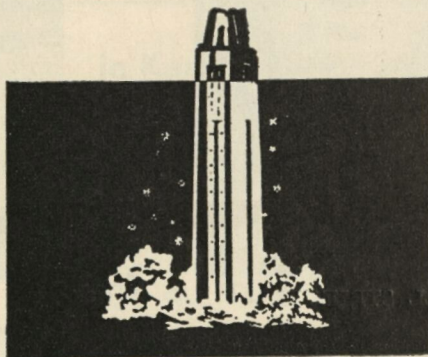


2

midwest landmarks—

K. U.'s Campanile

and the . . . KANSAS CITY LIFE INSURANCE COMPANY



**Warehouse, Portable and Truck Scales**  
**Machinist, Utility and Pipe Vises**  
**Jackscrews and Anvils**

**American Scale & Vice Co.**

Division of Cromb & Gagel, Inc.

2745 Southwest Blvd.

Kansas City, Mo.



**Jayhawk Coal**

**A Sure Winner for Warmth**

Produced and Sold by

**The Mackie-Clemens Fuel Co.**

Pittsburg, Kansas

Kansas City, Mo.

### C of the P Tigers



JACK LARSCHIED



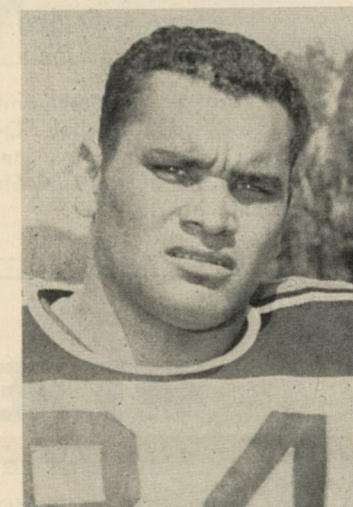
ADRIAN VERA



CHUCK CHATFIELD



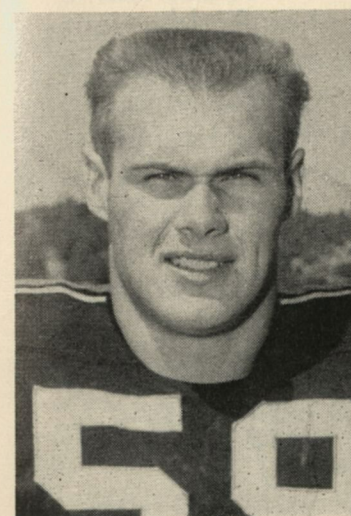
DUTCH GROSE



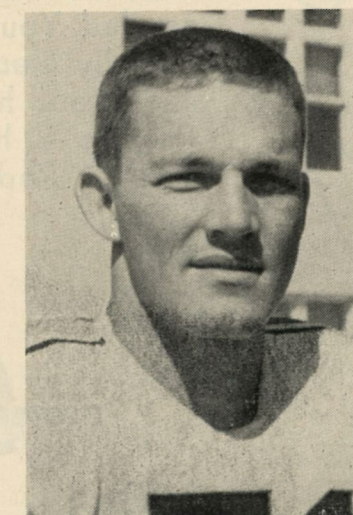
FLOYD WEAVER



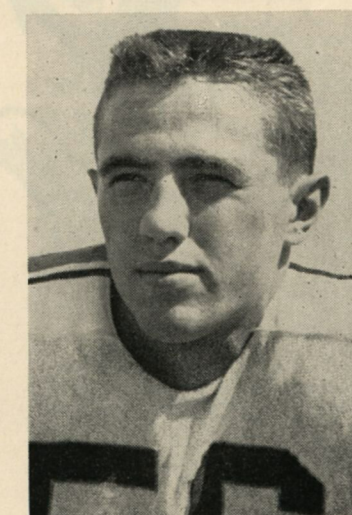
TOM FLORES



FARRELL FUNSTON



GALEN LAACK



TOM GREEN



## For America's All-Jet Air Arm



TWO IMPORTANT MEMBERS on the Air Force's Strategic Air Command team are the B-47 Stratojet medium bomber and its big brother the B-52 Stratofortress heavy bomber. Over 1,300 B-47s have been delivered to the Air Force from Boeing's Wichita, Kansas, division. Both the Seattle, Washington, and Wichita, Kansas, plants are currently in production and delivery of the B-52 Stratofortress. In planning your career, keep in mind the employment opportunities Boeing has to offer.



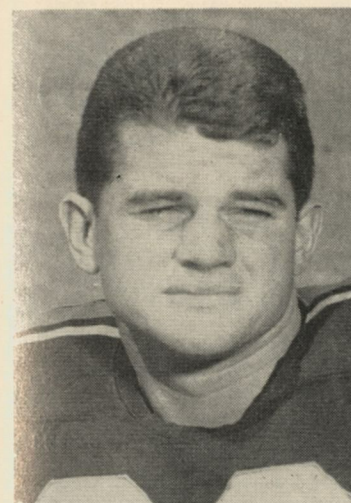
©REDDY KILOWATT

## GET REDDY TO WIN!

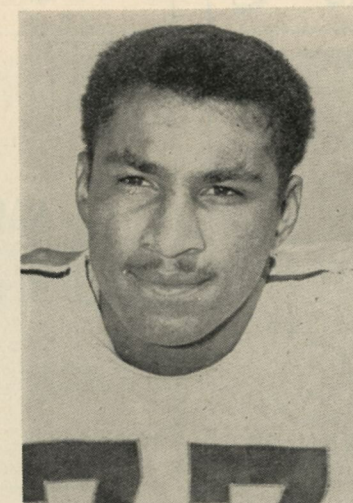
You can't help winning with Reddy Kilowatt on your team. He's an expert wherever fast, dependable service is needed. You can count on Reddy, your friendly **electric** helper, to make life easier and happier. And the amazing thing is — he works for just pennies! Call on Reddy... he's always available.



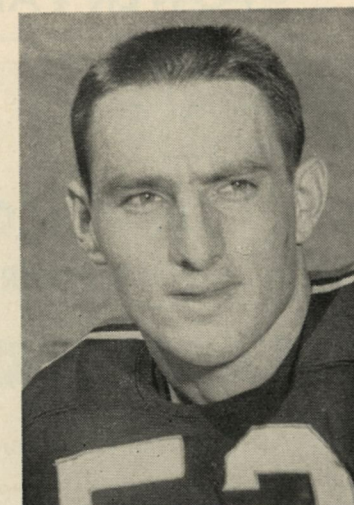
## C of the P Tigers



RON SMITH



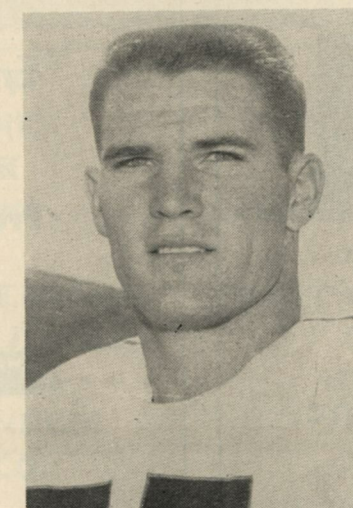
DICK BASS



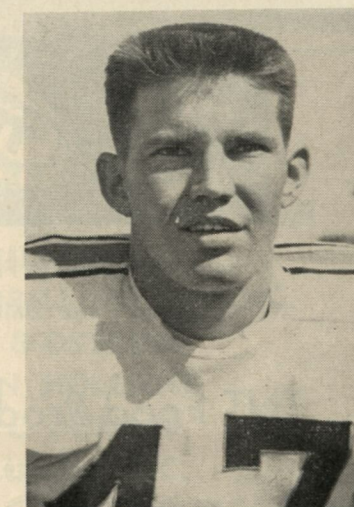
DON BOSSERT



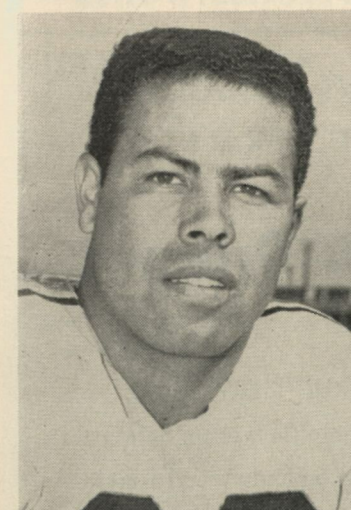
KEN USELTON



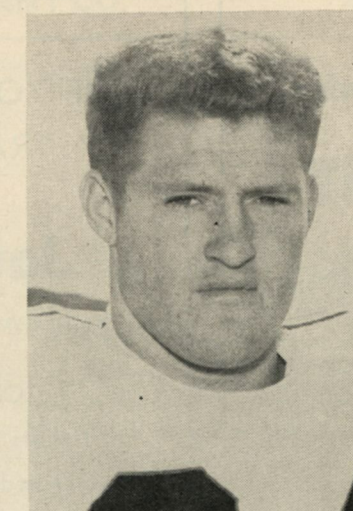
TOM PERRY



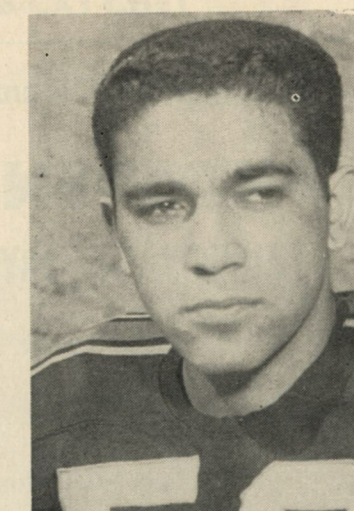
DEL WHITTIER



ROGER METOYER



GEORGE LANE



JIM REYNOSA



LET THESE

**POWER PARTNERS**GUARD—  
TACKLE—  
END—YOUR MOTOR  
THE JOB  
MOTOR WORRIES**5D—GASOLINE****5D—KOOLMOTOR OIL 10W-30****FRITZ CO.**

VI 3-4•3•2•1

8th at New Hampshire

CITIES

**SERVICE**

BEFORE OR AFTER THE GAME

Fill up with  
**Mobilgas****RAPID TRANSIT SERVICE****U. S. Royal Tires and Service**

Lawrence, Kansas

We Never Close

1000 Mass.

Phone VI 3-3423

Sold by Leading Food Stores  
throughout the United States**TNT Food Products, Inc.**

Lawrence

**Enjoy the Game**

Milk in your diet

**Promotes Vital Health****A Complete Cleansing Service****INDEPENDENT****LAUNDRY AND DRY CLEANERS**

Telephone VI 3-4011

740 Vt. St.

1903 Mass.

Lawrence, Kansas

IF YOU WANT TO SCORE  
TRADE IN TOPEKA AT**Jayhawk Drugs**

1001 Kansas Ave.

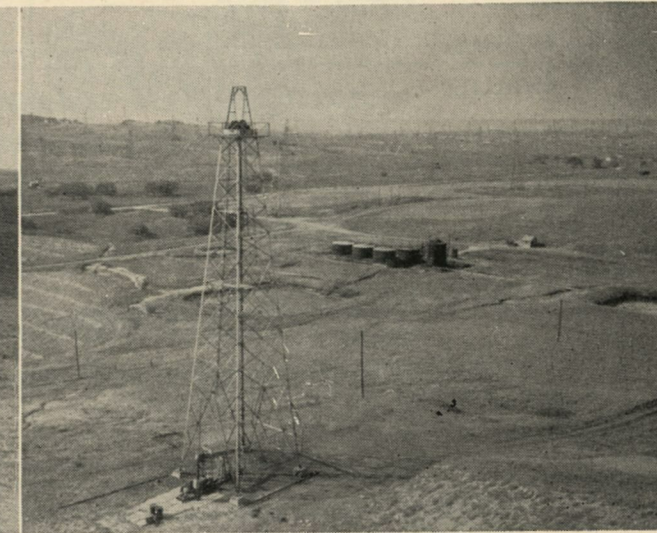
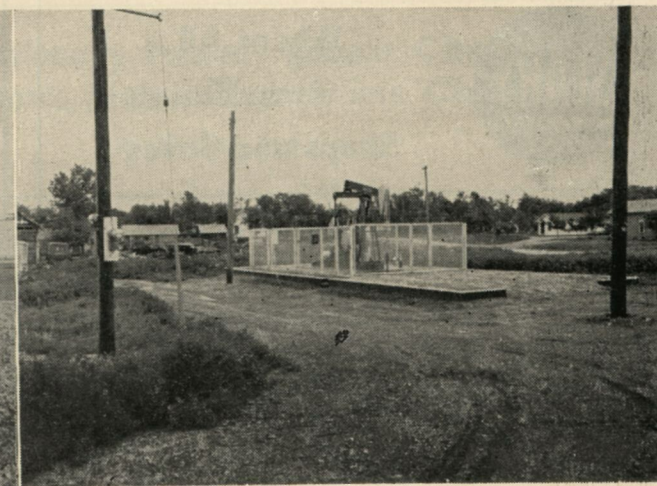
University Village  
21st Medford

COMPLETE DRUG SERVICE

Tickets for K.U. Home Games on Sale

Registered Pharmacist on Duty at all Times

# Russell Is Strong For Kansas


H. HOWARD McCOY  
RUSSELL STATE BANK  
HOME STATE BANK  
RUSSELL DAILY NEWS  
C. L. ROBERTSRichard M. Driscoll & Jerry E. Driscoll  
ERIC C. SMITH—ROBERT J. DOLE  
HOLLINGER DRUG STORE  
BRANDEBERRY MACHINE CO.  
HAYNES DRILLING CO.  
MAI INSURANCE  
REIN-WILLIAMS EQUIPMENT CO.SCHWARTZ READY MIX  
SHAFFER'S TOWER CAFE  
SHIELDS OIL PRODUCERS  
BANKERS—CELEBRATING 75th YEAR  
MAST DRILLING CO.  
WENTWORTH DRILLING CO., INC.  
OSTRUM & OSTRUM  
HERBERT N. HOLLAND  
HAROLD L. DUMLER  
R. C. WILLIAMS INC.  
PAUL MOORE'S CONOCO SERVICE  
WILD BUB-CAT CHET



**NEW**  
**Sunbeam** FRESHER

HIGHEST  
QUALITY



Sales  Service


**SCOTT MOTORS, Inc.**  
Phone 5-2341  
10th and Quincy, Topeka, Kansas  
24-Hour Wrecking Service — Official AAA

  
DIAMONDS • JEWELRY • GIFTS

3928 Main — K. C., Mo.  
"Open Every Evening"

Spot the Winners  
You will note that  
usually they are  
wearing  
**SPOT-BILT  
SHOES**

*Yours for Sport*  
**RS-Elliott ARMS CO.**  
1508-10 GRAND AVE KANSAS CITY, MO.

 **SEARS**  
ROEBUCK AND CO.

Where All  
America  
Shops and Saves

BANK AND BORROW

**The Lawrence National Bank**  
7th & Massachusetts St.

**Parker Buick Co.**

VI 3-3522      Seventh & New Hampshire

**Universal Construction Co.**

NORVEL E. SMITH, Pres.  
1200 Southwest Blvd.      Kansas City, Kansas

Telephone Drexel 1-7165

**Roy Wheat Insurance Agency**  
General Insurance Bonds  
234 Brotherhood Building  
Kansas City 11, Kansas  
A. V. (SKIP) WHEAT

**HAREN AND LAUGHLIN  
CONSTRUCTION CO.**

953 Minnesota Ave.  
C. Wells Haren      Hal H. Laughlin  
Kansas City, Kansas

**W. T. Foley**  
Electrical Supply Co., Inc.  
Wholesale

709 No. 6th St.      AT. 1-0324      Kansas City, Kansas

**Gateway Sporting Goods Co.**  
"SPORTSMAN'S PARADISE"

Ray Coughenour, District Representative  
524 Minnesota      14th & Main  
Kansas City, Kansas      10th & Main  
Kansas City, Mo.

**Lawrence Launderers & Dry Cleaners**      1001 New Hampshire      Lawrence, Kans.  
Quality Outstanding      SERVING LAWRENCE STUDENTS  
OVER 50 YEARS

**Steel, Aluminum and Stainless Steel Fabricators**  
**Commercial Dishwashing Machines**  
**GRESHAM & CO., INC.**  
2745 Southwest Blvd.      Kansas City, Mo.

**SIMONDS-SHIELDS-THEIS GRAIN CO.**  
We Have Been Serving the Kansas Grain Trade for 72 Years  
Kansas City, Mo.      Board of Trade Bldg.

Always Ready  
To Serve You!

The "Central Bank" is known thruout Kansas for  
efficient, complete and courteous banking service.  
**THE CENTRAL NATIONAL BANK & TRUST CO.**  
Member Federal Deposit Insurance Corporation  
701 Kansas Ave.      Topeka, Kansas

**MODERN  
BANKING  
SERVICE**

Every modern banking facility is at your command at National Bank of Topeka  
**NATIONAL BANK OF TOPEKA**  
We have served Kansas for over three quarters of  
a century and we're ready to serve you today!  
Member Federal Deposit Insurance Corporation  
Established . . . 1868      Sixth and Kansas Ave.

**Kaw Paving Company, Inc.**  
FIRST AND TOPEKA AVE.  
Topeka, Kansas

*Williams*  
**Meat Co.**      Serving Nationally Famous Kansas City Meats  
to Schools, Hotels, Restaurants, Clubs  
20 Kansas Ave.  
Kansas City, Kansas

DINING      DANCING

**DINE IN MITE**

Seating Capacity  
250 People      Seating Capacity  
250 People



For the Most Complete Coverage of  
**Jayhawker Sports**

Tops in K.U. sport  
 stories and columns  
 with prize-winning  
 action photographs.

Follow our  
 Jayhawkers through  
 stories and pictures  
 in the . . .

**LAWRENCE DAILY JOURNAL-WORLD**

A News-Packed Newspaper For 10,700 Families

**GENERAL STEEL PLATE  
 AND STRUCTURAL STEEL FABRICATION  
 AND MANUFACTURING**

HARRY DARBY

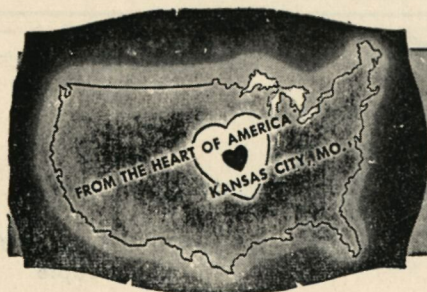
**THE DARBY PRODUCTS OF STEEL PLATE CORPORATION**

KANSAS CITY,

KANSAS

Carl V. Rice '18, President  
 Jeff W. Mitchell, Jr. '43, Executive Vice-President  
 & General Manager

Ralph McCreary, Treasurer  
 Sam Wells, Secretary



**RUPERT DIECASTING CO.**

Kansas City 27, Missouri

ZINC — ALUMINUM — MAGNESIUM

## Know Your Jayhawks



### JIM LETCAVITS

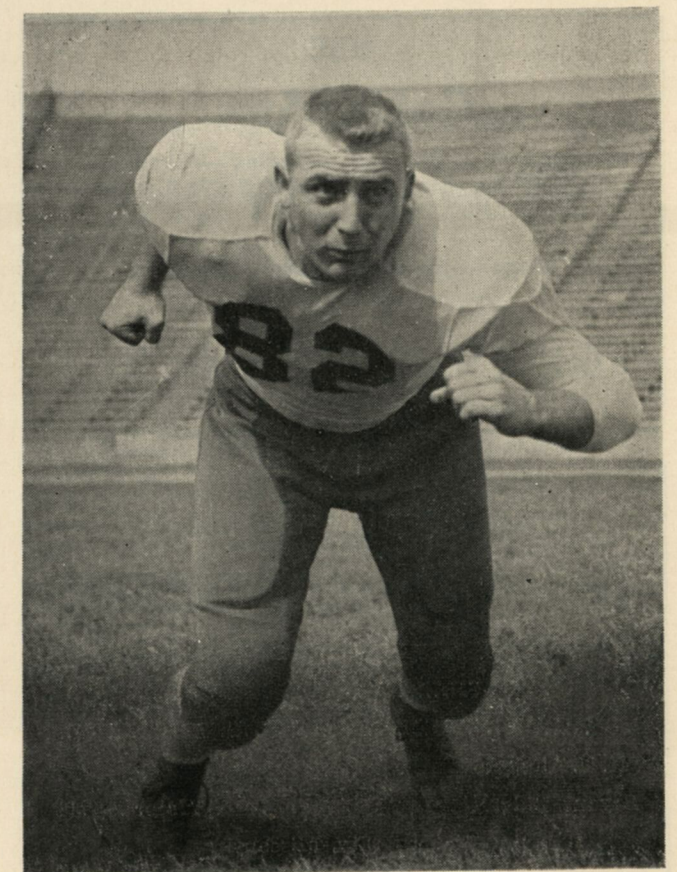
#### END

Starting second year as regular right end. . . Missed two games as sophomore last season with broken hand. . . Led club in receiving, 1955, and ranked sixth in Big Seven on 169 yards for nine catches. . . Scored both touchdowns in 14-33 defeat by Southern Methodist. . . Agile defender and blocker. . . Normal improvement in these departments would lift him among best ends in league. . . Father, Joe Letcavits, Massillon, Ohio, lumberyard foreman. . . Married.

### FRANK GIBSON

#### TACKLE

Started nine games last year as sophomore and is one of seven returning regulars. . . Good interior and open-field blocker. . . Good speed. . . Has shown steady defensive improvement after never having played that phase in high school platoon football. . . Ranked seventh in club tackling last year with 25 singles and 16 assists. . . Married. . . Father, James Gibson, traveling superintendent for Bethlehem Steel Co.





Best of luck to the Kansas team  
and the Coaching Staff

**KANSAS COLOR PRESS**

## Construction Products Company

Reinforcing Steel for Concrete  
Fireproof Building Products  
Paving Materials

Topeka — Kansas City, Mo. — Omaha

## USE Golden Star

Lacquers — Enamels — Stains — Shellacs  
*"For Finest Furniture Finishes"*

Also

Mops — Polish — Wax — Cleaners  
*"For Finest Finish Maintenance"*

**Golden Star Polish Mfg. Co., Inc.**  
KANSAS CITY 1, MO.

COMPLETE REAL ESTATE SERVICE

## Herbert V. Jones & Company

\*BYRON T. SHUTZ

PAUL M. JONES

\*WILLIAM J. CAMPBELL

HOWARD N. BARNUM

NEIL G. LILLEY, JR.

\*K. U. Alumnus

Bryant Bldg.

Victor 2-5711

Kansas City, Missouri

**GENERAL ELECTRIC**  
COMMERCIAL AND INDUSTRIAL  
**PACKAGED  
AIR CONDITIONING**  
W. A. THOLEN — C. W. SCHUMACHER  
**AIR CONTRACTORS, Inc.**  
2101 BROADWAY GR 1-1455  
KANSAS CITY 8, MISSOURI

## STUDEBAKER

Sales — Service

**A Great Car**

SALUTES

**A Great Team**

**Sanders Motor Co.**

622-24 Mass.

Phone VI 3-6697

Only GAS

Does So Much . . . .

For So Little!

**Kansas Public Service Co., Inc.**

Your GAS Company

## Charlton Ins. Agency

Established 1861

BOB CHARLTON

PAULA R. CHARLTON

Phone VI 3-5454

## Leavenworth Boosters

### HOTEL CODY

Leavenworth, Kansas, Route 73 North  
One of America's Newest Hotels  
Free Parking Fine Coffee Shop

Compliments of

**JAMES N. SNYDER**

### THE KELLY AGENCY

209 S. 6th

**TIM BANNON**

## COLLARD CHEVROLET

6th & Cherokee  
Leavenworth

## FIRST NATIONAL BANK

MEMBER FDIC

## A. M. GEIGER CEMENT CO.

1411 South Second St.

## THE LEAVENWORTH TIMES

Since 1857

Compliments of

**THOMAS J. BROWN, JR.**



"It's for you . . . some girl!"

"The House That Service Built"

## SNOWDEN-MIZE

Atchison, Kansas

**Kansas' Oldest and Largest Independent  
Wholesaler of Athletic Equipment**

OUR SALESMEN

E. J. "Ernie" Vanek, Sales Mgr.  
Salina, Kansas

P. H. "Pete" Perry, Southern Representative  
Arkansas City, Kansas

Karl "Pappy" Kramer, North Central Representative,  
Holton, Kansas

Wm. "Bill" Weatherford, City Salesman, Atchison, Ks.



**WINTER**



Ph. VI 3-7700

**24 HOUR  
WRECKER SERVICE**

**IN TOPEKA**

*The Place to Go for the Brands You Know*

**RAY BEERS**  
CLOTHING COMPANY

805 Kansas Ave.

Phone 8-8551

**PENNY'S**

**READY  
MIXED**

**CONCRETE**

Emporia  
2586

Lawrence  
VI 3-8100

**B. A. GREEN  
CONSTRUCTION CO.**

**Always A Jayhawk Rooters  
Until the Aggies come to town**

**The  
VICTORY LIFE  
Insurance Company**

1921 — Thirty-five years of dependable — 1956  
service — Providing maximum  
protection at a minimum cost.

Home Office — Topeka, Kansas

**CAPITOL FEDERAL SAVINGS  
AND LOAN ASSOCIATION**

"LARGEST IN KANSAS"

OFFERS FREE LIFE INSURANCE WITH INSURED SAVINGS

Topeka • Lawrence • Mission

**We're Busy**

Taking the official  
K.U. Football Movies  
See you after the game.

**MOSSER-WOLF**

CAMERAS

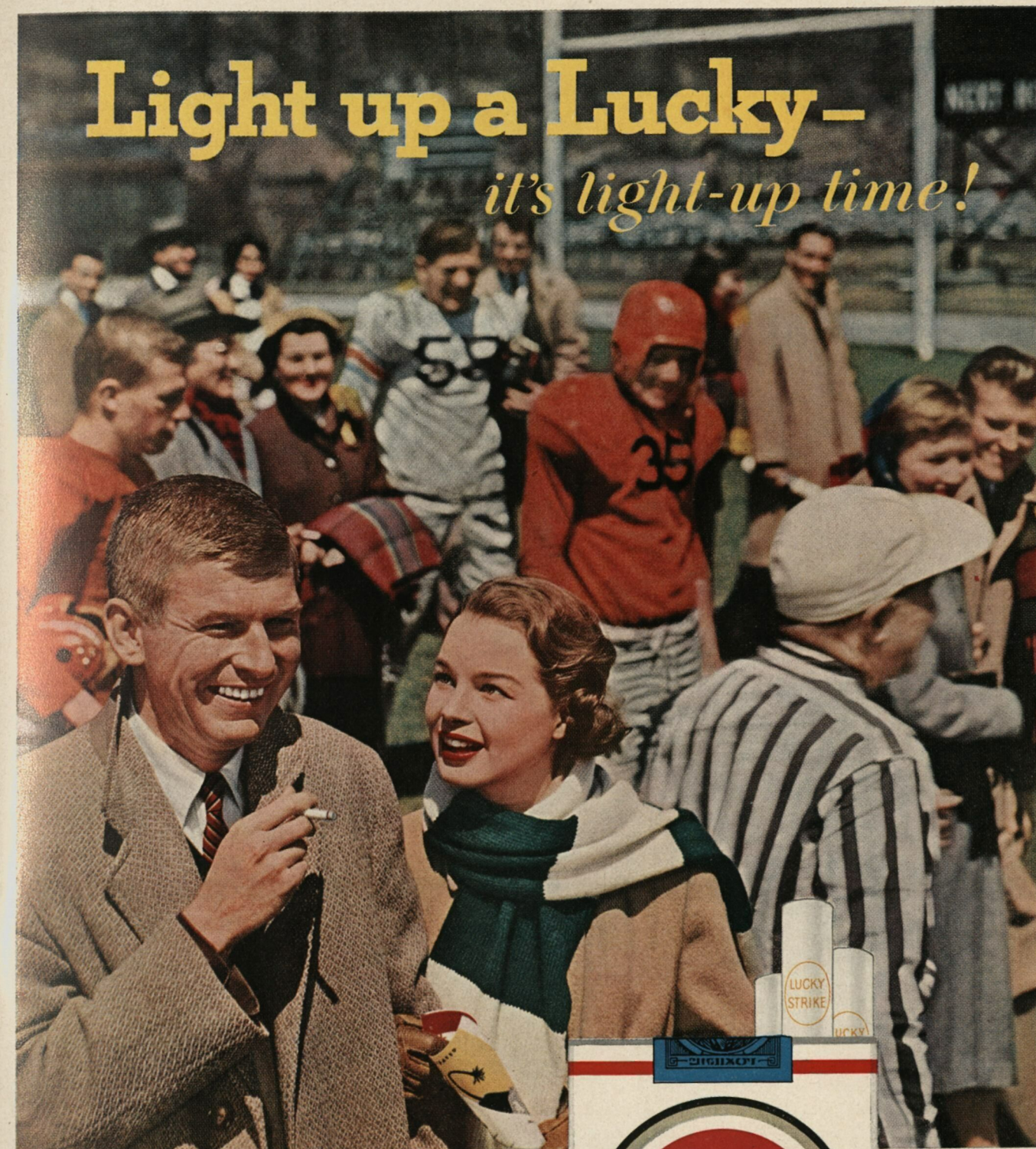
1107 Mass.

PHOTO SUPPLIES

**Topeka's  
FRIENDLY Bank**



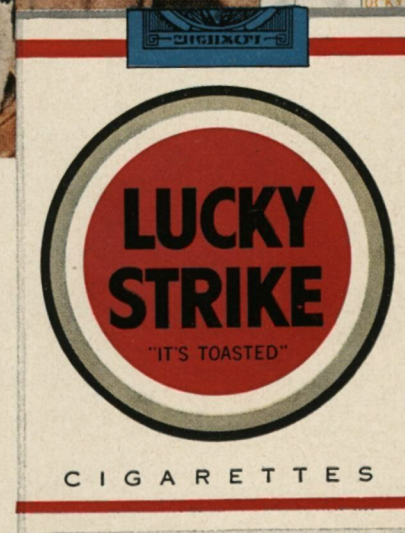
MEMBER FEDERAL RESERVE SYSTEM ★ MEMBER FEDERAL DEPOSIT INSURANCE CORPORATION  
501 KANSAS AVENUE TOPEKA, KANSAS



**Light up a Lucky—**  
*it's light-up time!*

**Luckies  
Taste Better**

*Cleaner, Fresher, Smoother!*



**"IT'S  
TOASTED"  
to taste  
better!**



*Weavers*

more than  
a department store . . .



a K.U. institution!

*on the corner of 9th and Massachusetts      Lawrence, Kansas*

ESTABLISHED 1857