



10-11-1947

October 11, 1947 Football Program, UOP vs. San Diego State

University of the Pacific

Follow this and additional works at: <https://scholarlycommons.pacific.edu/ua-football>

Recommended Citation

University of the Pacific, "October 11, 1947 Football Program, UOP vs. San Diego State" (1947). *Football*. 229.

<https://scholarlycommons.pacific.edu/ua-football/229>

This Book is brought to you for free and open access by the Athletics at Scholarly Commons. It has been accepted for inclusion in Football by an authorized administrator of Scholarly Commons. For more information, please contact mgibney@pacific.edu.

COLLEGE OF THE PACIFIC vs SAN DIEGO STATE

Saturday, Oct. 11, 1947

BAXTER STADIUM — 8 P. M.

Official Program 25c





they're made in Scotland
of the finest

**Chinese
CASHMERE**

Sweaters

luxury by
lyle and scott

CAMPUS CLASSICS
IN
CAMPUS COLORS

Strawberry Turquoise
Natural Aqua Grey . . . Black

SHORT SLEEVE SLIP ON	16 ⁹⁵
LONG SLEEVE SLIP ON	19 ⁹⁵
LONG SLEEVE CARDIGAN	22 ⁹⁵

The Wonder
since 1894
three forty east main

**C.C.A.A.
FOOTBALL
1947**

College of the
PACIFIC

— versus —

San Diego State

SATURDAY, OCTOBER 11 — 8:00 P. M.



— Next Home Game —

Santa Clara vs Pacific — Saturday, Oct. 18 — 8:00 p.m.

Telephone 7-7009

YEAGER'S

"Distinctive Furniture"

40 North Sutter Street

Stockton, California

OPEN EVENINGS TILL 10

Pesce and Company

CREDIT JEWELERS

124 E. Main St. — Stockton

Complete Jewelry Store Service

Repairs - Engraving - Diamonds
Rings - Watches - Etc.

Telephone 2-6767

Mallett Music Co.

Electric Appliances - Washers

Refrigerators - Ironers

Ranges - Radios - Stoves

30 N. Sutter St.

Stockton

THE GAME . . .

By CARROLL DOTY, C.O.P. Athletic Pub. Dir.

Early season dope placed the Spartans from San Jose and the Aztecs from San Diego at the top of the heap in the CCAA — the two teams that had to be defeated for a crack at the CCAA crown.

The first two games of the season for the San Diegans has not altered the opinion of the pre-season dopsters in any way. The Aztecs still have to be defeated before Larry Siemering and Company can look forward to any other games.

It was in the final game of the 1946 season that the Tigers went out and got three scores early, and then watched San Diego batter away the rest of the game, outplaying the Bengals and just barely losing a 13-19 decision. With a veteran team and a new coach back, the Aztecs will be out to twist the Tigers' tail, but good.

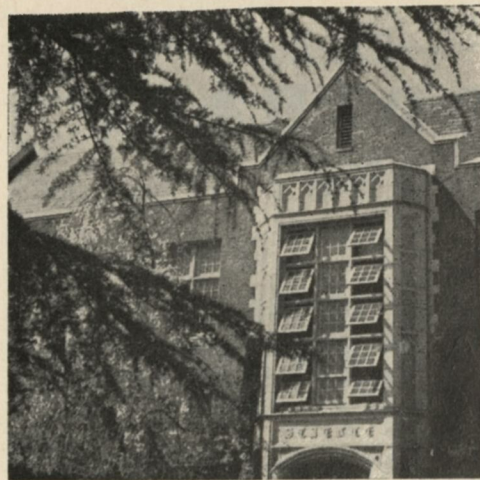
In Los Angeles' Gilmore Stadium last week Pacific put on what many southern California sports writers are still talking about as the show of the season. One even went so far as to write several days following the game that Bruce Orvis and Don Brown would be first stringers at either USC or UCLA, and that Whiz Kid Eddie LeBaron showed off some of the most deft T handling of the year.

As a matter of fact, one scribe said, "As small college teams go, we haven't seen a sharper outfit than Larry Siemering's in the past decade."

The Tigers will be going into tonight's battle in top physical shape, with two possible exceptions. Tackle Tom Atkins aggravated an old knee injury at Loyola and may not start, and end John Rohde injured an ankle, which might slow him down a bit but won't keep him out of the starting lineup. If the two are reinjured, Ed Cathcart and Roy Kirsten will be ready to step in and take over.

Off of performances in the first two COP games, some boys to keep your eyes on are Bruce Orvis (naturally!), who rambled for 133 yards against Loyola; Don Brown, who had a 55 yard TD dash called back in the south; Bobby Heck, 9.6 dash man who might go all the way at any time; and Ernie Bobson, who will operate either at full or left half. Ernie is the most improved runner on the squad, combining break away dash with straight ahead power.

This, then, is it. A CCAA game between San Diego State and Pacific. It isn't stretching things a bit to say the winner may easily wind up with the conference crown.



By CHARLES T. BRYNE, San Diego Pub. Dir.

A glance is sufficient to indicate that one of the crucial games of the season, as far as San Diego and College of the Pacific are concerned, comes up in Baxter Stadium tonight. San Diego State's victory over Cal Poly put the Aztecs at the top of the California Collegiate Athletic Association standings, temporarily at least, but there is no question that Pacific is going to figure strongly in the championship picture.

In fact, the winner tonight will undoubtedly become favored to battle it out with San Jose State, defending champion, for the title, with Fresno State remaining a dark-horse contender.

There is no way to compare accurately the strength of opponents San Diego and Pacific have met to date, but the "points for" column indicates that both have potent, dangerous offenses. The Aztecs have tallied 80 points in two games and Pacific 81. On the defensive side, the figure to date would indicate that COP may have a slight advantage, with 32 points scored against San Diego and seven against Pacific, although that is no real basis for comparison.

The Aztecs will be hard hit for tonight's game by the loss of Bob Tomlinson, sophomore first string left halfback. Tomlinson, tackled by two men after taking Art Filsen's first quarter pass against Cal Poly, received a dislocated shoulder. He has been declared out for at least three games by Coach Bill Schutte.

Tomlinson will be missed on offense, but Schutte is fortunate in having three capable replacements at the left half spot in "Little Joe" Riccobono, Jack Kaiser, and Bob Chapman, all of whom showed to advantage in the Cal Poly victory. Riccobono probably will get the starting call against Pacific.

Tonight's game will mark the fourth time the Tigers and Aztecs have met on the gridiron. COP was victorious, 19-7, in 1935 and 19-13 in 1946. San Diego won out, 12-6, in 1941. So tonight the Aztecs will be out to even things with the Tigers.



WM. H. SCHUTTE, HEAD COACH
San Diego State College



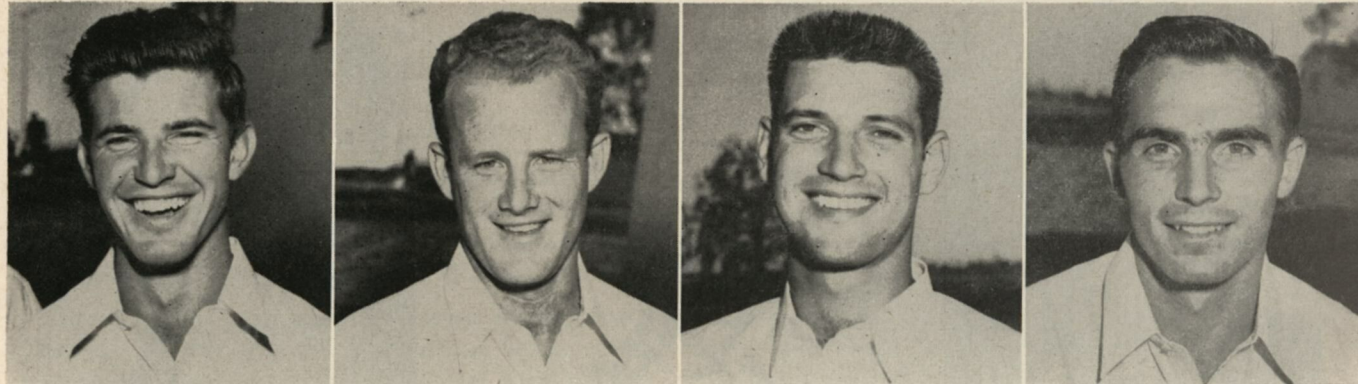
CHARLES R. SMITH is Athletic Director, Head Basketball and Baseball Coach and Asst. Football Coach at San Diego State College.

Pacific Coaching Staff



Left: Larry Siemering, Head Coach. Top right: Ernie Jorge, Assistant Coach. Center: The Staff. Lower right: Hugh McMilliams, End Coach.

SIXTEEN STOUT STATERS

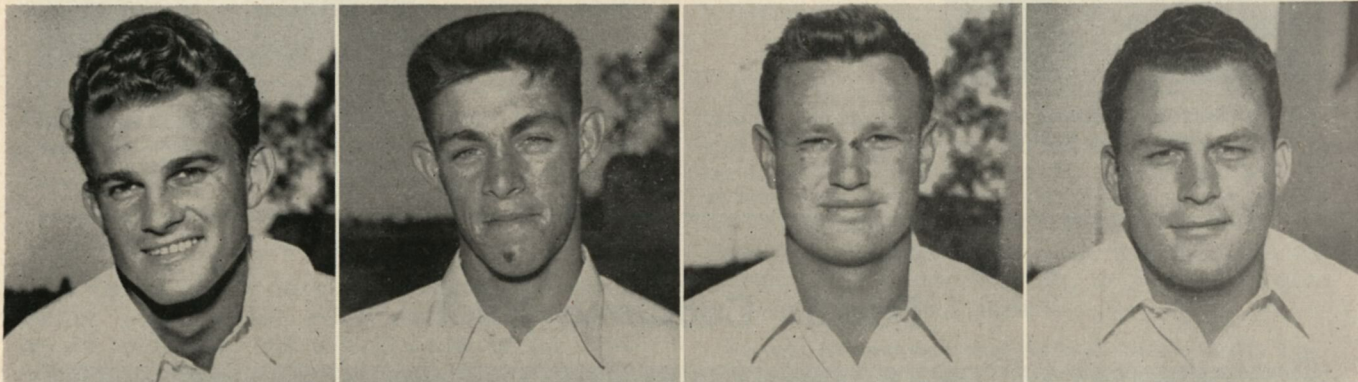


Dick Adair, end

Barney Newlee, half

Bob Rogers, end

Art Filson, quarter

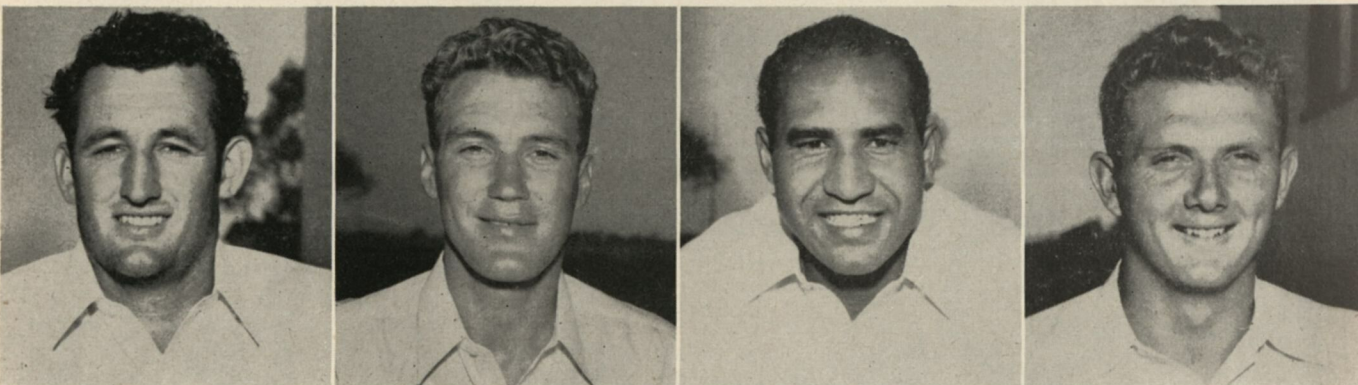


John Simcox, quarter

Bob Tomlinson, half

Benny Edens, center

Stew Worden, full

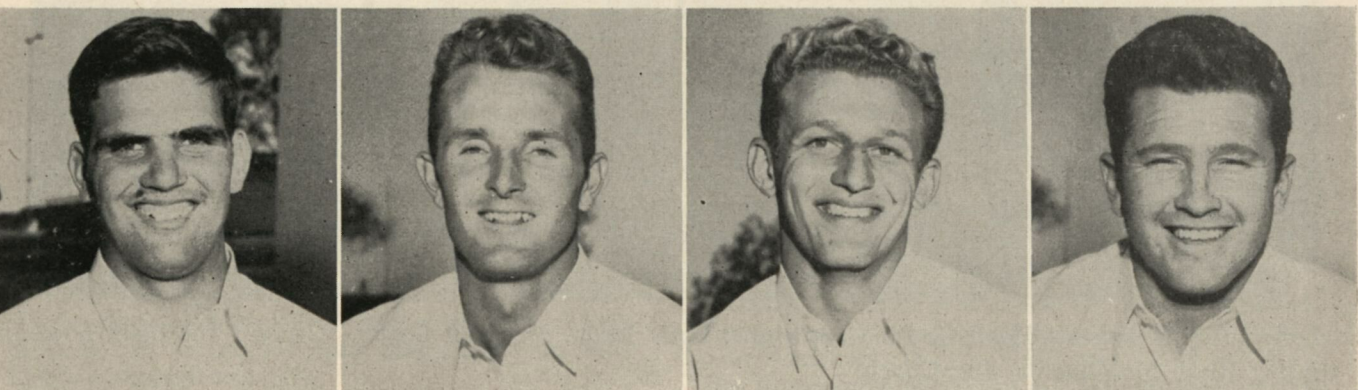


Jack Kaiser, half

Gene Smith, end

Jess Bryant, full

Geo. Coleman, center



Tom Dahms, tackle

Ken Mitchell, half

Larry Berger, end

Hub Foote, full

SIXTEEN STOUT STATERS

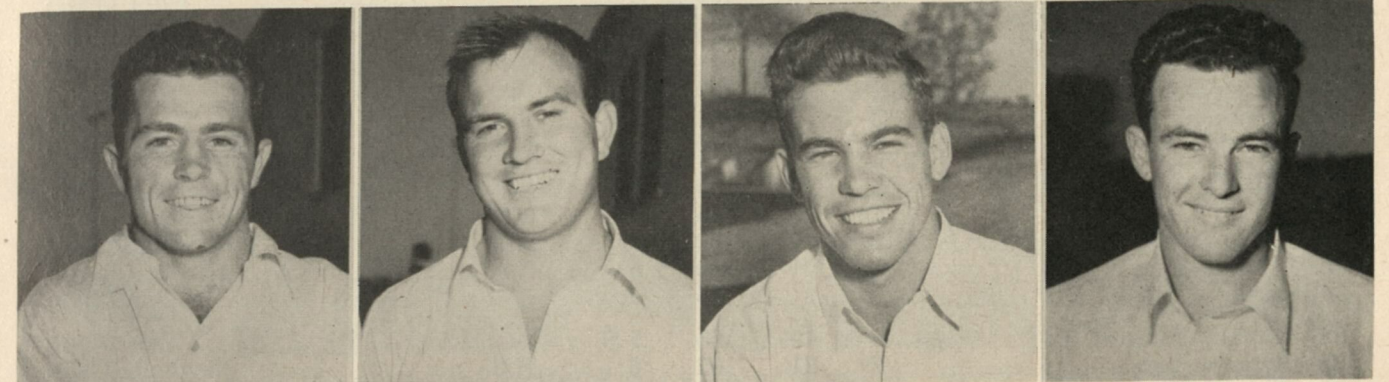


Bob Palash, end

Eddie Nuttall, half

Lloyd Cassady, end

Jim Dowd, guard

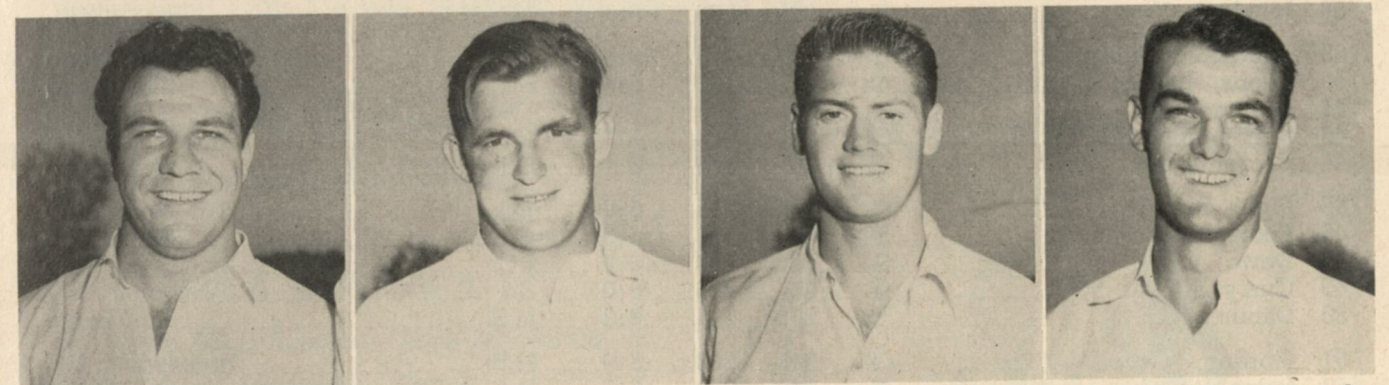


Bob Chapman, half

Dick Simmons, full

Alton Peters, end

Mike Simmons, quarter

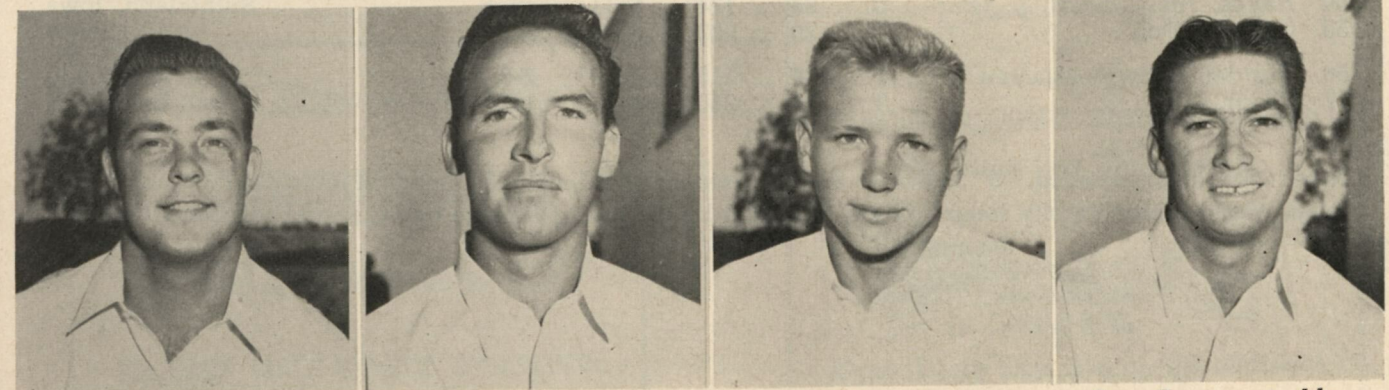


Nick Radovich, tackle

Keith Curry, guard

Dick McKee, half

George Brown, guard



Marvin Piper, guard

Jim Davis, quarter

Curtis Williams, center

Don Cannon, tackle

1947 Football Roster

San Diego State

No.	Name	Pos.	Age	Wt.	Ht.	Exp.	Home Town
10	Kaiser, Jack	H	24	179	6:2	S-1	San Diego
12	Newlee, Barney	H	27	163	5:8	S-1	ermosa Beach
13	Simmons, Dick	F	21	200	5:10	J.C.	Pasadena
15	Adair, Dick	E	23	170	6:1	J.C.	San Bernardino
16	Simcox, John	Q	23	170	5:11	S-1	Long Beach
17	Riccobono, Joe	H	21	160	5:7	J.C.	Long Beach
18	Davis, Jim	Q	20	185	5:10	J.C.	Anaheim
19	Chapman, Bob	H	23	165	5:8	H.S.	Bonita, Calif.
20	Filson, Art	Q	19	170	5:11	JV-1	San Diego
21	Williams, Curtis	C	18	185	5:10	JV-1	Long Beach
22	Peters, Alton	E	21	170	6:0	JV-1	San Diego
23	Tomlinson, Bob	H	19	161	5:11	S-1	National City
25	McKee, Dick	H	22	180	6:0	JV-1	San Diego
26	Coleman, George	C	19	200	6:0	S-1	La Jolia
28	Palash, Bob	E	25	200	6:2	H.S.	San Diego
29	Allen, Dennis	C	25	190	6:0	S-1	Brawley
30	Smith, Gene	E	21	185	6:1	S-1	San Diego
31	Trup, Gerhart	E	22	180	6:0	H.S.	Germany
32	Cassady, Lloyd	E	21	180	5:11	S-1	San Diego
33	Bardot, Don	E	21	175	6:0	JV-1	San Diego
34	Nuttall, Eddie	H	19	165	5:9	JV-1	San Diego
35	Rogers, Bob	E	21	192	6:1	H.S.	Newhall, Calif.
36	Bryant, Jess	F	25	190	5:10	S-1	San Diego
37	Missler, Albert	T	25	245	6:1	None	St. Louis, Mo.
38	Mitchell, Ken	H	22	185	6:1	J.C.	Brea, Calif.
39	Radovich, Nick	T	23	215	6:0	JV-1	San Diego
40	Edens, Bennie	C	21	196	5:10	S-1	San Diego
41	Huebner, Art	G	19	190	5:10	JV-1	San Diego
43	Simmons, Mike	Q	20	158	5:9	J.C.	Morgan City, Ia.
44	Berger, Larry	E	20	175	6:1	S-1	San Diego
45	Piper, Marvin	G	19	215	6:0	J.C.	San Bernardino
46	Foote, Hub	F	24	193	5:9	S-1	San Diego
47	Dowd, Jim	G	20	202	5:7	J.C.	San Bernardino
49	Curry, Kieth	G	24	220	6:0	S-1	National City
50	Dahms, Tom	T	20	215	6:3	H.S.	San Diego
51	Gordon, "Greek"	G	21	208	5:9	H.S.	Brunswick, Ga.
52	Boles, Jim	T	26	220	6:1	S-1	San Diego
53	Brown, George	G	24	200	6:3	Navy	San Diego
54	Hayes, Ash	C	24	174	5:11	JV-1	Sutherland, Iowa
55	Cannon, Don	T	20	220	6:3	H.S.	El Centro
56	Worden, Stew	F	24	215	5:10	S-2	Coronado
57	Fodor, Al	T	21	240	6:1	J.C.	Bell, Calif

Note: Under experience, "S" indicates varsity letter at SDSC, with the numeral indicating the number of letters won. Junior Varsity lettermen are indicated by JV; Junior College by J.C.; and High School by H.S.

Longine — Official Watch for Tonight's Game

Pacific Athletic Staff



Top left: Dr. Walter Knox, Director of Health and Physical Education. Right: Robert Monagan, Athletic Manager. Center: Earl Jackson, Director of Athletics. Lower left: Carroll R. Doty, Publicity Director. Lower right: Chris Kjeldsen, Basketball and Swimming Coach.

The Midway

740 EAST MAIN STREET

Fountain Service — Phone 2-7897

8:00 A. M. Til 1:00 A. M.

Latest Sport Returns—Game Broadcasts

Amusement Games

Home of Kuppenheimer Clothes

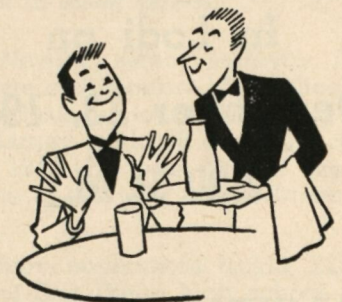
THRELFALL'S

Clothes for Men and Boys

439 EAST MAIN STREET, STOCKTON

THE PLACE TO GO CASTLE FOUNTAIN

2328 Pacific Ave.



Fountain Service — Merchant's Lunch

We Make Our Own Donuts



Open Every Day, 9 a. m. till Midnight

Watch Pacific Roll!

3

More Home Games In Baxter Stadium at 8:00 P. M.

SEE——

Pacific vs Santa Clara	Oct. 18
Pacific vs South Dakota	Nov. 14
Pacific vs Fresno	Nov. 21

AND——

The First Annual GRAPE BOWL In Lodi on December 13, 1947 2:30 P. M.

PACIFIC

—VS—

UTAH STATE

Get Your Tickets Now!

Next Week — SANTA CLARA!

University of Santa Clara's powerful Broncos come to Stockton next Saturday evening and Larry Siemering's chargers are going to try to saddle him.

Off to a bad start against the high flying California Bears, Len Casanova's men nevertheless have bounded back and got off a good game last week in Fresno, downing the CCAA team, 20-19. This week the Broncos play Stanford and then move into Baxter stadium.

Santa Clara's highly touted sophomores from Menlo J. C. have finally started to click, and people are saying now that the Broncos could still easily be the class of the Bay Area independents. Such top performers as Billy Sheridan, kid brother of the famous Neil; Doug Renna, converted into a center from the backfield, and Tor Spindler, left tackle, all are youngsters in their first year of big-time college ball.

Backing up the youthful element on the Broncos are men like Bill Prentice, Hall Haynes, Vern Hare, Bill Crowley, Al Martin, and Cy Smith, all veterans and all capable of twisting the Tigers' tail.

In addition to the terrific football in prospect when Pacific and Santa Clara tangle, will be the added spectacle of 1947's annual Homecoming. The game will act as a climax to the return of many scores of Pacific "old grads," and a rejuvenated Bengal will be their reward.

Following the Santa Clara-Homecoming game, the Tigers go on the road for three weekends in a row, doing their bit before the citizens of San Luis Obispo, San Jose, and Santa Barbara in three CCAA games. The middle game of the three—with San Jose State—could easily be the turning point of Pacific's conference season. A win over the Staters and the Bengals would be the team to beat for Raisin Bowl honors.

On November 14, an intersectional tinge is added to the atmosphere when the Coyotes from Vermillion, South Dakota University, play Pacific in the next to the final game of the home season. Traditional rival Fresno State closes both COP's home season and the CCAA race, in Baxter Stadium on November 21.

Lodi's first annual Grape Bowl will be the scene of another CCAA-Skyline Six argument, with Pacific and Utah State having it out. The Staters mixed with San Jose State last year and San Diego State in the opener this year, and managed to lose to both. The Tigers will be out to make it three losses in a row for the Rocky Mountaineers to CCAA teams.

Pacific Players

Phil "Corky" Orteza, junior end, 6'3" and 195. A graduate of Lodi high school, he later played at Sacramento Junior College before coming to Pacific. Was outstanding in pre-season practice and has proven worth in first two games. Caught a TD pass against Willamette. Is top blocker among ends as well as good pass catcher

Ed Cathcart, sophomore tackle, 6' 2" and 188. One of the two Hawaiian players on the Pacific team, Ed came to COP from Iolani high school in Honolulu along with Jim Boyd. Tall and comparatively light, but strong as a bull, Cathcart will probably have to handle right tackle tonight with Tommy Atkins favoring his Loyola-bumped knee.

George Brumm, senior guard, 6' 1" and 197. A graduate of Lodi high school who later played for Modesto J. C., George was top defensive end for the 1946 Tigers and was moved by Larry Siemering to guard this year to bolster that spot. So far the move has been good. In the Loyola game, the Lions were moving goalward on one series of downs, until Brumm, with aid from Campora, broke through to dump a runner for a large loss.

Bob Heck, sophomore halfback, 5' 11" and 175. A graduate of Burbank high school, Bob lives in Clovis now. Will easily be the speediest man on the field tonight. In the springtime Bob runs a 9.6 hundred yard dash for Coach Earl Jackson's cinderellas. Bob rambled 54 yards against Willamette and has played great defensive ball in both games.

Ernie Bobson, sophomore half-fullback, 5' 7" and 178. A graduate of Manteca high school, Ernie is the size of a halfback but plays mostly at fullback. His was the key play at Loyola, coming into the game on fourth down and running around end to the Lion two to set up the score. Ernie started out the season consistently working with third and fourth stringers (but now he's one of the first-stringers.)

Ray Hunter, sophomore halfback, 6' 5" and 211. The tallest man on the squad. Ray was shifted from end to halfback to help out on pass defense, but he developed into such a runner, he is now Orvis' first relief. The Pacifics will all tell you Hunter is the hardest man on the squad to tackle. Against Loyola his height and ruggedness came in handy when he bulled his way to COP's third score, right through a stone wall of Lion linemen.

Aztec Sketches

Larry Berger, sophomore end, 6'1" and 175. A graduate of Hoover high school where he lettered in football and basketball. Was first string end at San Diego in 1945, before entering the Army. Gained Little All American recognition for his play that year. His return bolstered the somewhat depleted State end ranks.

George Brown, senior guard 6' and 200. A graduate of Hoover high school in San Diego where he earned his varsity letter. Played guard for Annapolis Navy in 1943 and gained All American recognition. Is back for another crack at playing ball with his home town team.

George Coleman, sophomore center, 6' and 184. A graduate of La Jolla high school where he played in the backfield. Moved into center slot last Fall by Bill Terry and it proved to be a good move. George won varsity letter as frosh at age of 18. He won all-CCAA honorable mention in 1946.

John Simcox, sophomore quarterback, 5' 11" and 160. A graduate of Jordan high school in Long Beach and a letterman at San Diego State in 1946. After starting a fullback was switched to tailback spot and played most of his time there. Led last season's backfield for rushing honors and was second in total yardage. John was given honorable mention on the INS all coast team last season.

Stewart Worden, senior fullback, 5'10" and 228. A graduate of Coronado high school where he played varsity football. Won his second Aztec varsity letter last Fall. During the war he played for the University of Colorado and USC. Worden is a specialist in sheer power.

Barney Newlee, senior halfback, 5' 8" and 163. A graduate of Alhambra high school, he later played at Modesto Junior College. A place kicking expert, Barney made 18 out of 22 conversion attempts in 1946. He was chosen the best all around athlete of the year at San Diego State for 1946-47.

Tom Dahms, sophomore tackle, 225 pounds. A graduate of San Diego high school where he was all conference and all-CIF in 1944. Looked good in pre-season workouts and worked his way into a starting berth, despite lack of college experience. Is considered by Coach Schutte to be a great prospect. Tom comes from a long line of Dahms who were good athletes.

Bob Tomlinson, sophomore halfback, 161 lbs. A graduate of Sweetwater high school in National City where he won letters in both football and track. Gave up track at State to concentrate on football and won his letter last season. Has been playing first string left half for the Aztecs in 1947.

After the Game

— the —

CLARK HOTEL

Located At
SUTTER AND MARKET STREETS

In Downtown

STOCKTON

Offers for your enjoyment and
entertainment

The Ba-Ba-Lu Lounge—

A favorite meeting place for
refreshments —
after the game or anytime

The Little Club—

A small and cozy rendezvous and
lounge with piano entertainment
and community singing nightly

The Walnut Room—

Serving fine foods and beverages
at modest prices

PRIVATE DINING ROOMS—
are available for special parties

If you plan to spend the night in Stock-
ton just call 6-6881 and ask for the
reservation clerk. The CLARK'S 200
guest rooms are being completely re-
newed for your sleeping comfort.

NOW under the direction of The
Newcomb Hotel Interests

For Reservations call 6-6881

Victor M. Seneker, Manager

College of the Pacific

LH Brown 42	FB Poulos 53	RH Orvis 72
LE Rohde 76	LT Campora 56	LG Franceschini 49
QB LeBaron 40	C Kidwell 50	RG Goldman 47
RT Cathcart 55	RE Ridley 74	
40. LeBaron, qb	51. Hillyer, lt	62. Gambetta, rg
41. Greer, lh	52. Atkins, rt	63. Hardin, rh
42. Brown, lh	53. Poulos, fb	64. Stowell, lh
43. Hunter, rh	54. Mothorn, c	65. Hall, c
44. Kane, fb	55. Cathcart, rt	66. Bobson, lh-fb
45. Brumm, rg	56. Campora, lt	67. Williams, lh
46. Waldorf, rg	57. Baxter, rg	68. Gambetta, rt
47. Goldman, rg	58. Carter, lg	69. Bronzan, qb
48. Brown, lg	59. McCormich, qb	70. Otey, re
49. Franceschini, lg	60. Price, lh	71. Breien, c-rt
50. Kidwell, c	61. Rhin, rg	72. Ovis, rh
		73. Watters, lt
		74. Rid'ey, re
		75. Kirsten, le
		76. Rohde, le
		77. Valencia, rh-fb
		78. Johnson, le
		79. Boyd, le
		80. Heck, lh
		81. Hayden, re

	1	2	3	4	T
SAN DIEGO					
PACIFIC					

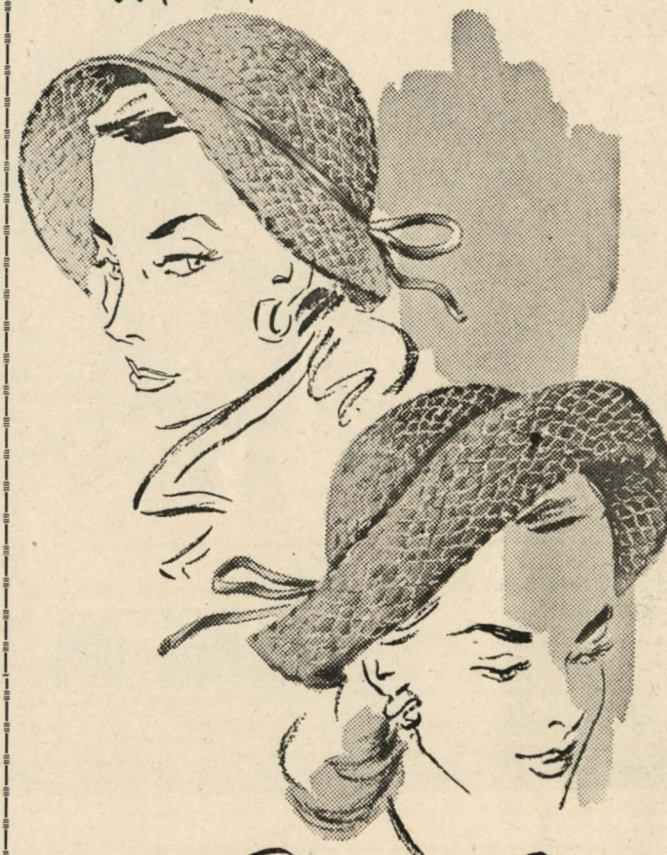
San Diego State

LH Riccobono 27	FB D. Simmons 13	RH McKee 25
LE Adair 15	LT Dahms 50	LG Curry 49
QB Simcox 16	C Coleman 26	RG Brown 53
RT Boles 52	RE Rogers 35	
10. Kaiser, lh	25. McKee, rh	39. Radovich, lt
12. Newlee, rh	26. Coleman, c	40. Evans, c
13. Simmons, fb	27. Riccobono, lh	41. Huebner, lg
15. Adair, le	29. Allen, c	42. Missler, rt
16. Simcox, qb	30. Smith, le	43. Simmons, qb
18. Davis, qb	31. Trup, le	44. Berger, re
19. Chapman, lh	32. Cassidy, le	45. Piper, lg
20. Filson, qb	33. Bardot, re	46. Foote, fb
21. Williams, c	35. Rogers, re	47. Dowd, rg
22. Peters, re	36. Bryant, fb	48. Palash, re
23. Tomlinson, lh	38. Mitchell, rh	49. Curry, lg
		50. Dahms, lt
		51. Gordon, rg
		52. Bo'es, rt
		53. Brown, rg
		54. Hayes, c
		55. Cannon, lt
		56. Worden, fb
		57. Fodor, rt

OFFICIALS

REFEREE	W. G. FISCHER, St. Mary's
UMPIRE	DARIO SIMONI, San Jose State
HEAD LINESMAN	H. W. SAUNDERS, California
FIELD JUDGE	LEO J. ROONEY, St. Mary's

BY *Meadowbrook* OF CALIFORNIA



Bouclé Soufflé

for all-occasion wear.

Crushable... packable

Little wool hats shot through with golden
threads year-'round, crushable,
packable.

10.95

millinery . . . street floor

The Brown House

seventeen hundred pacific avenue

1947 PACIFIC VARSITY



— Visit the —

College Book Store

College of the Pacific

FOR TEXTBOOKS
AND STUDENT SUPPLIES
OF ALL KINDS

Everything For The Traveler

Schwartz Luggage Shop

TELEPHONE 2-3163

517 EAST MAIN STREET, STOCKTON

"Warmth Without Weight"

FOR PERFECT FOOTBALL
SEASON ENJOYMENT

A CAMA RAJAH **TOPCOAT**



THE CALIFORNIAN CLOTHIERS

Ray Flory, Owner

25 N. CALIFORNIA STREET
Between Main and Weber

1947 Football Roster

Pacific Tigers

No.	Name	Pos.	Age	Wt.	Ht.	Exp.	Home Town
40	Edward LeBaron	Q	17	168	5:7	Pacific	Oakdale
41	Donald Greer	H	23	167	5:8	S. J. C.	Redding
42	Donald Brown	H	20	160	5:9	S. J. C.	Lodi
43	Raymond Hunter	H	20	211	6:5	Pacific	Oakdale
44	Harry Kane	F	19	197	5:10	Pacific	Berkeley
45	George Brumm	G	26	197	6:1	Pacific	Lodi
46	Arthur Waldorf	G	20	186	6:0	S. J. C.	Los Angeles
47	Stanley Goldman	G	24	190	5:11	Pacific	Hollywood
48	Arthur Brown	G-T	20	185	6:0	Pacific	Oakdale
49	Robert Franceschini	G	20	202	5:11	Pacific	San Francisco
50	Collie Kidwell	C	23	202	6:0	Pacific	Hemet
51	Richard Hillyer	T	22	214	6:0	Pacific	N. H'wyood
52	Thomas Atkins	T	23	220	5:10	Pacific	Woodbridge
53	John Poulos	F	22	230	6:3	Manteca Hi	Manteca
54	Lydon Mothorn	C	21	203	6:0	Pacific	Healdsburg
55	Edward Cathcart	T	24	188	6:2	Pacific	Honolulu
56	Donald Campora	T	20	245	6:3	Pacific	Stockton
57	Herbert Baxter	G	21	183	5:10	S. J. C.	Monterey
58	Wilford Carter	G	21	181	5:10	S. J. C.	Los Angeles
59	Donald McCormick	Q	20	170	5:10	S. J. C.	Galt
60	James Price	H	20	160	5:8	Sac. J. C.	Galt
61	Joseph Rhin	G	22	197	5:11	S. J. C.	Oakland
62	Joseph Gambetta	G	26	183	5:9	Pacific	Vallejo
63	Wayne Hardin	H	20	179	5:11	Pacific	Stockton
64	Carroll Stowell	H	22	165	5:10	Chaffey J. C.	Stockton
65	Donald Hall	C	22	202	6:1	Pacific	Stockton
66	Ernest Bobson	H-F	20	178	5:7	Pacific	Manteca
67	Paul Williams	H	22	159	6:0	Elizabethan Hi	Tennessee
68	Julius Gambetta	T	23	197	6:2	Pacific	Vallejo
69	Louis Brozan	Q	24	181	6:0	Pacific	Manteca
70	Phillip Ortez	E	22	190	6:3	Sac. J. C.	Lodi
71	Richard Breien	C	20	207	5:11	Pacific	Fresno
72	Bruce Orvis	H	20	172	5:8	Pacific	Farmington
73	James Watters	T	20	211	6:3	Pacific	Oakland
74	Jean Ridley	E	22	197	6:2	Pacific	Stockton
75	Roy Kirsten	E	21	175	6:0	S. J. C.	Stockton
76	John Rohde	E	20	207	6:3	Pacific	San Jose
77	Joseph Valencia	H-F	23	178	5:7	Pacific	Vallejo
78	Kenneth Johnson	E	21	182	6:3	Lincoln Hi	San Jose
79	James Boyd	E	23	180	6:0	Pacific	Honolulu
80	Robert Heck	H	21	170	5:11	Pacific	Clovis
81	David Hayden	E	22	186	6:1	Stockton Hi	Stockton

LONGINE — OFFICIAL WATCH FOR TONIGHT'S GAME

PACIFIC



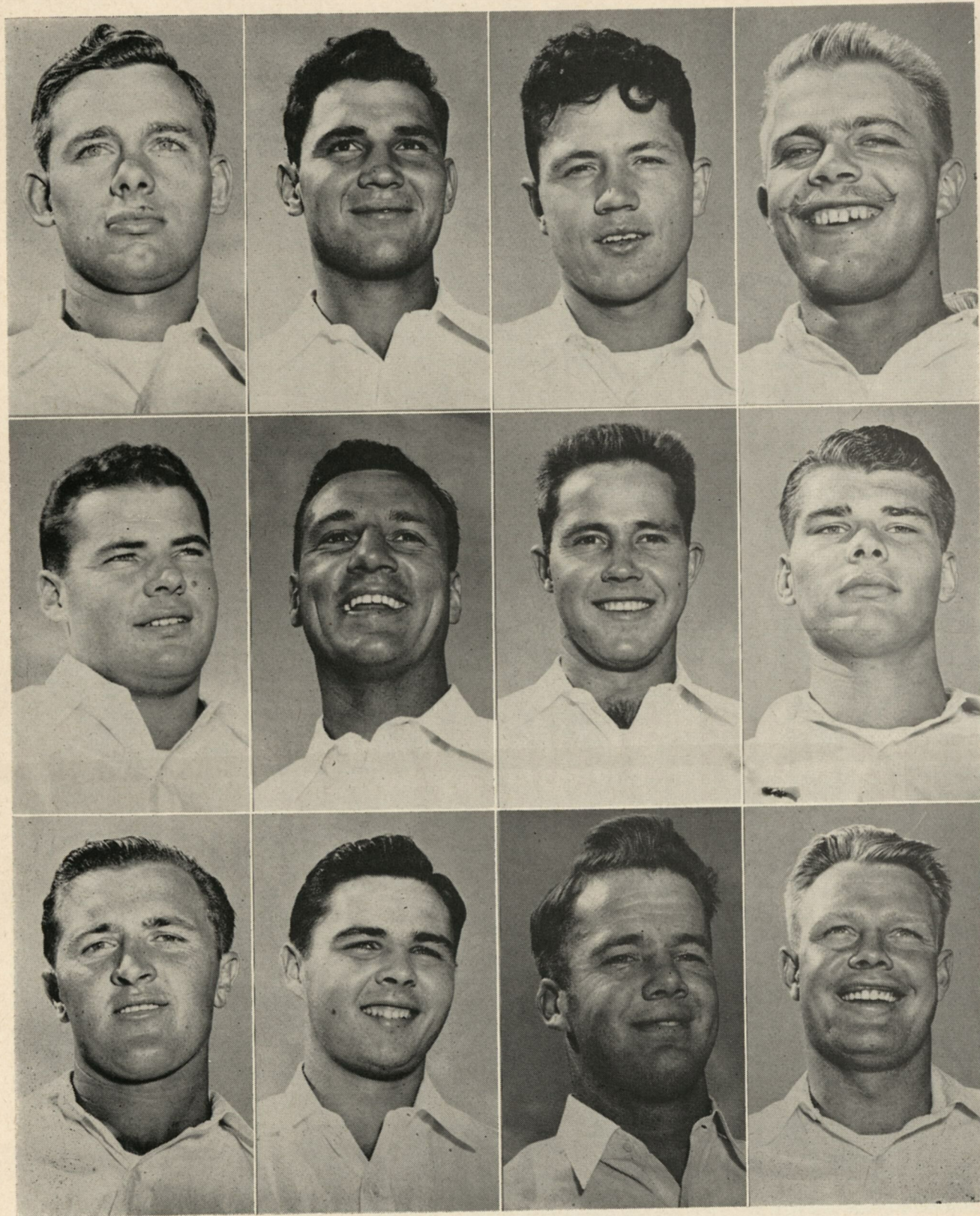
Top row, left to right: Jean Ridley, Joe Valencia, Bob Franceschini, Wayne Harden. Middle row, l to r: Carroll Stowell, Bruce Orvis, Dave Hayden, Geo Brumm. Bottom row, l to r: Jim Boyd, Stan Goldman, Wilford Carter, Lou Coward.

"TIGERS"



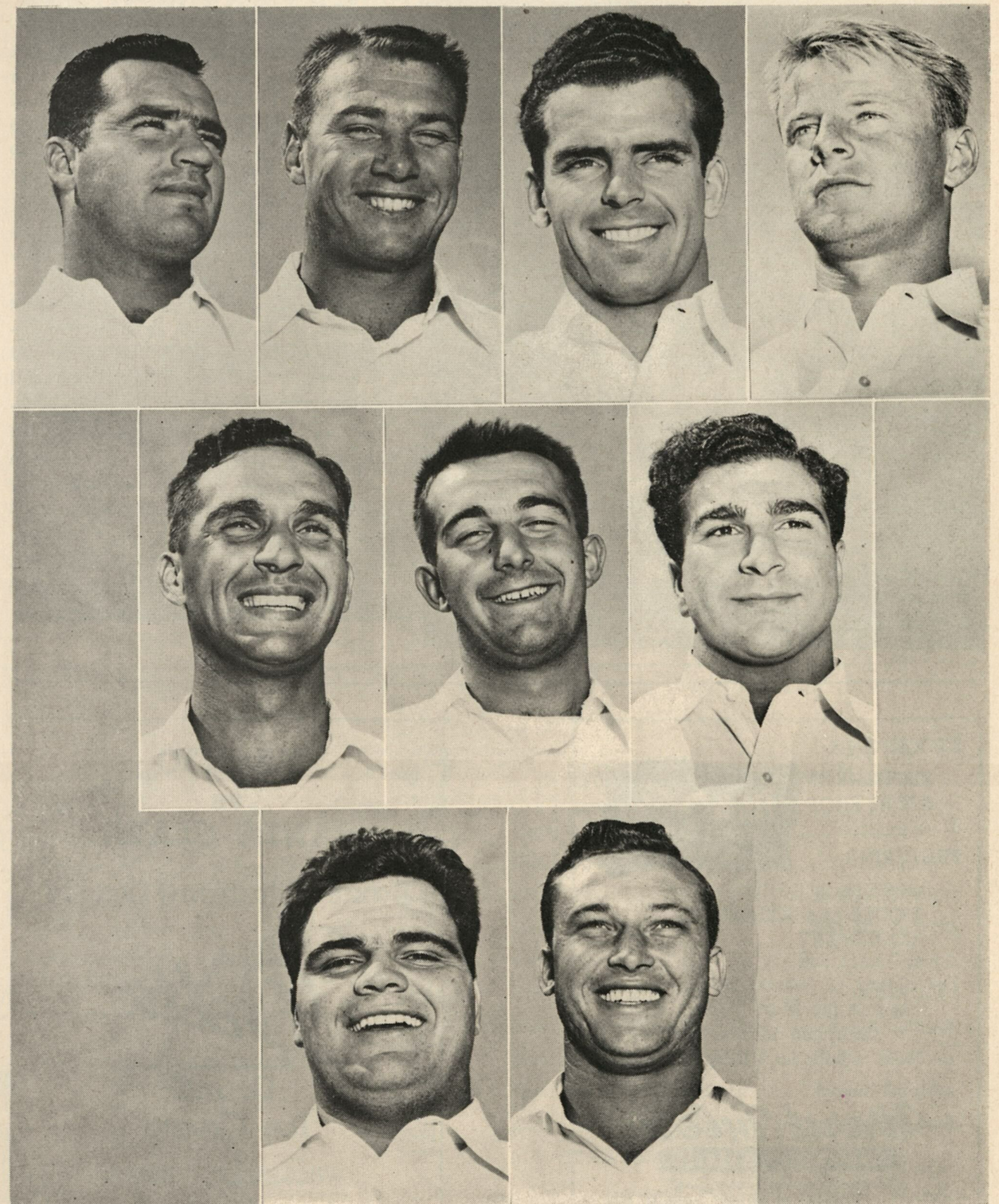
Top row, left to right: Ed LeBaron, Bob Heck, Don McCormick, Phil Orteiz. Middle row, l to r: Harry Kane, Paul Williams, Don Brown, Ray Hunter. Bottom row, l to r: Joe Gambetta, Frank Zboran, Ed Cathcart, Tom Atkins.

PACIFIC



Top row, left to right: Roy Kirsten, Art Brown, Ken Johnson, Dick Hillyer. Middle row, l to r: Joe Rhin, Don Hall, Art Waldorf, Jim Watters. Bottom row, l to r: Pete Gambetta, Dick Breien, Jim Price, John Rohde.

"TIGERS"



Top row, left to right: John Poulos, Herb Baxter, Don Greer, Tom Milligan. Middle row, left to right: Lou Bronzan, Lydon Mothorn, Ernie Bobson. Bottom row, left to right: Don Campora, Collie Kidwell.



College of the Pacific

The first college chartered by the State of California (1851), Pacific is a privately endowed, church-related (Methodist), co-educational liberal arts institution. Located at Stockton, it is the only college of its type in the interior Valley empire.

Sports facilities include night-lighted Baxter Stadium, a sunken bowl seating 10,000; the basketball pavilion, recently increased to 1,000 capacity; eight tennis courts; an open air, heated swimming pool, several practice fields, and a newly constructed baseball diamond which will be ready for the '48 season.

The latter is the first development on Knoles Field, a 20 acre all-recreation area, purchase of which was aided by a gift from former Pacific coach, Amos Alonzo Stagg.

Recognition by the American Association of Universities gives Pacific the highest academic accreditation.

STOCKTON'S
EXCLUSIVE
SPORT SHOP



FEATURING—

SPORTS CLOTHING
SHOES and ATHLETIC
EQUIPMENT

For Skiing or Winter Sports our Ski Shop is the Most Modern and Complete in the San Joaquin Valley

Ward Tyler's
SPORT SHOP

"Everything for Every Sport"

HOTEL STOCKTON BLDG.

129 E. WEBER AVE.

PACIFIC
vs
SANTA CLARA
Baxter Stadium, Oct. 18

Delta
Grand
Ice Cream

WHOLESALE — RETAIL

1928 Pacific Ave., Stockton

Official timing watch for the

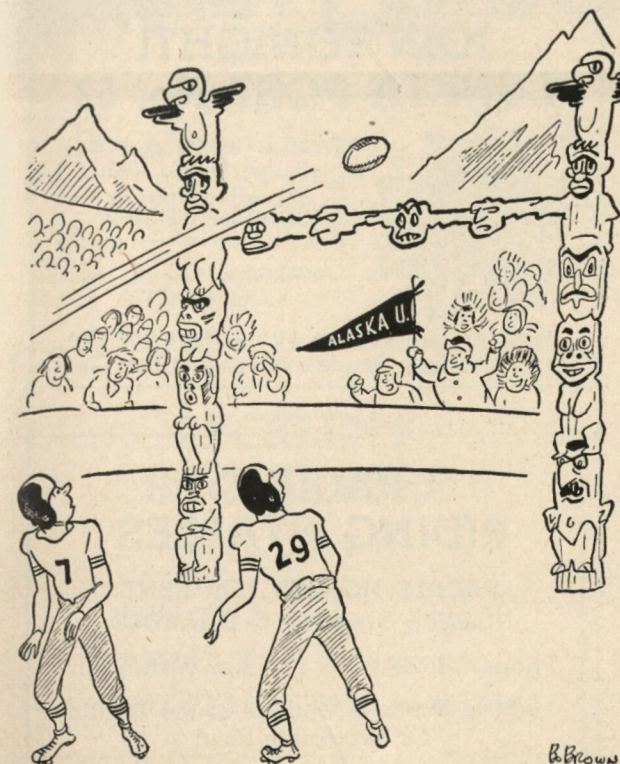
PACIFIC-SAN DIEGO STATE FOOTBALL GAME

Longines

The World's Most Honored Watch
winner of 10 world's fair grand prizes,
28 gold medals, and more honors for
accuracy than any other timepiece



Product of Longines-Wittnauer Watch Co.

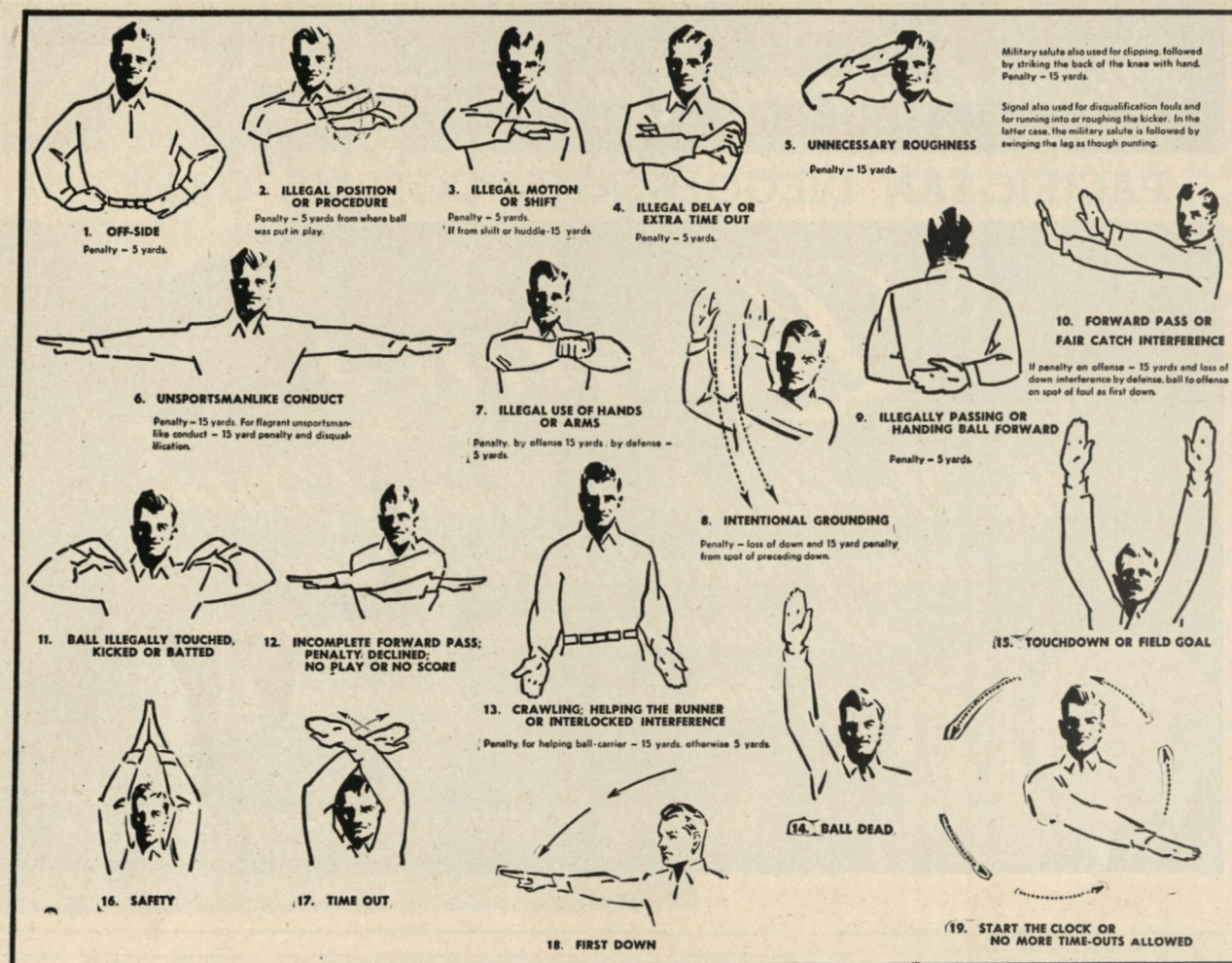


1947 Tiger Schedule

Sept. 26—Pacific 56	Willamette 0
Oct. 3—Pacific 25	Loyola 7
Oct. 11—* San Diego	Baxter Stadium
Oct. 18—Santa Clara	Baxter Stadium
Oct. 25—* Cal Poly	San Luis Obispo
Oct. 31—* San Jose State	San Jose
Nov. 7—* Santa Barbara	Santa Barbara
Nov. 14—South Dakota	Baxter Stadium
Nov. 21—* Fresno State	Baxter Stadium
Dec. 13—Utah State	Lodi

* CCAA Conference Games

All Baxter Stadium Games
at 8:00 p. m.



Don't Miss This!

STOCKTON J. C.

-VS-

ST. MARY'S COLLEGE
Junior Varsity

FRIDAY, OCT. 17

Baxter Stadium - 8 p. m.

JOIN TONIGHT! LUNETTA POST No. 52



Veterans of Foreign Wars
of the United States
If you served overseas, you
belong in the VFW.
First in service - to the
VETERANS and to the
COMMUNITY.

Membership blanks and tickets for the
Armistice Day Dance available at Exit Gate

PACIFIC RIDING STABLES

SADDLE HORSES FOR RENT
HORSES BROKEN & BOARDED

Phone 3-4022

Jim Watt, Mgr.

1/4 Mile North of College of the Pacific
On Brookside Road

Tuxedo Pastry Shoppe

For Mince and Pumpkin Pies

— Fresh Donuts —

1904 Pacific Avenue — 939 N. Yosemite

445 N. San Joaquin

Stockton Ice & Fuel Co.

ICE — FUEL — BUILDING MATERIAL

Phone 5-5847

Corner Scotts Ave. and Madison St.

2230 E. Main

914 N. Wilson

LET'S WIN WITH SIEMERING

DENTONI'S 5 10 and 15¢ Stores

"There is one in Your neighborhood"

4019 E. Washington

2026 Pacific Avenue

444 E. Charter Way

135 N. Wilson

224 S. El Dorado

Hotel Stockton

Stockton California

TWO HUNDRED ROOMS
COCKTAIL LOUNGE - COFFEE SHOP
BANQUET FACILITIES
AIR CONDITIONED THROUGHOUT

JACK BEATY, Operator

On the Miracle Mile

RAEMSCHS HARDWARE

Paints - Hardware - Appliances

Pacific Avenue

PECKLER'S SHOE STORE

523 E. MAIN ST.

VITALITY Shoes for Women

JARMAN Shoes for Men

POLL PARROT Shoes for Children

THE PLACE TO EAT ON CAMPUS

THE CUB HOUSE

Open from 7:45 a. m. to 5:00 p. m.

Let's Meet at



Fountain Service

3216 PACIFIC AVENUE

Florence Atchison

Thos. B. Carroll

SERVICE CLEANERS

2326 N. EL DORADO STREET

Ample Parking Space

All Clothing Insured While in Our Possession

Telephone 7-7665 and Our Drivers Will Be Pleased to Pick Up Your Dry Cleaning — Prompt Service

All Work Done in Our Own Modern Plant

ALSO CASH AND CARRY

M-M-Good!

GABARDINE



*As seen in
Mademoiselle*

Classic Beauty—A classic, but so very "DORIS DODSON!" Rayon gabardine with self-belt studded in nail-heads. Blue, pink, green, 9 to 15. 14.98

Of Course They're Exclusive at ...

du bois

six hundred-eight east main

Branch Stores:
1833 Pacific Ave.
440 E. Charter Way
41 N. Wilson Way