



10-24-1953

October 24, 1953 Football Program, UOP vs. Marquette University

Marquette University

Follow this and additional works at: <https://scholarlycommons.pacific.edu/ua-football>

Recommended Citation

Marquette University, "October 24, 1953 Football Program, UOP vs. Marquette University" (1953). *Football*. 137.

<https://scholarlycommons.pacific.edu/ua-football/137>

This Book is brought to you for free and open access by the Athletics at Scholarly Commons. It has been accepted for inclusion in Football by an authorized administrator of Scholarly Commons. For more information, please contact mgibney@pacific.edu.

MARQUETTE

COLLEGE OF THE PACIFIC

• OCTOBER 24 • 1953 • MARQUETTE STADIUM

• OFFICIAL PROGRAM • TWENTY-FIVE CENTS



Get the most in FOOTBALL



Your favorite teams covered by Wisconsin's largest staff of sports writers: MARQUETTE by Jack De Long; WISCONSIN by Oliver Kuechle; GREEN BAY PACKERS by Kuechle and Chuck Johnson . . . Important Big Ten games by Russ Lynch . . . City, Suburban and Catholic high schools by Bob Wolf, Bill Letwin and Chuck Johnson . . . Pictures by 18 staff photographers, AP Wirephotos and UP Telephotos. Read The Milwaukee Journal sports pages!

Watch WTMJ-TV . . . NBC telecasts of

outstanding NCAA games . . . Professional games, including four Packer contests . . . Professional championship game and other top contests . . . Weekly movie roundups of professional and college games, filmed in various parts of the nation . . . Rose Bowl game, also on WTMJ.

Listen to WTMJ

. . . Marquette games by Lloyd Pettit . . . Wisconsin games by Bob Heiss . . . Green Bay Packer games by Earl Gillespie . . . also Sport Flash and Last Word in Sports.

Most for you in all sports through

THE MILWAUKEE JOURNAL
WTMJ-TV WTMJ

LUCKIES TASTE BETTER!

Cleaner, Fresher, Smoother!

Be Happy GO LUCKY!

LUCKY STRIKE
"IT'S TOASTED"
CIGARETTES

COPR., THE AMERICAN TOBACCO COMPANY

OFFICIAL WATCH FOR THIS GAME



Longines



The World's Most Honored Watch



LONGINES WATCHES ARE OFFICIAL
FOR TIMING
CHAMPIONSHIP SPORTS IN ALL
FIELDS THROUGHOUT THE WORLD

*Product of
Longines-Wittnauer Watch Company*

A Home Is Probably the Most Important Investment You'll Make

*Protect that investment by making sure
of top-flight workmanship*

Specify

- A general contractor who employs ONLY A. F. of L. skilled union craftsmen.
- Subcontractors who employ ONLY A. F. of L. skilled union craftsmen.

Remember—"There is no substitute for A. F. of L. Skilled Craftsmen"

Milwaukee Building and Construction Trades Council

John Zancanaro, President

1713 N. 12th St.

Affiliated with A. F. of L.

Phone CONcord 4-4700

THE MARQUETTE AVALANCHE



OFFICIAL FOOTBALL PROGRAM

BUZZ MILLER
Editor

Homecoming



MARQUETTE - 20

VS.

COLLEGE OF THE PACIFIC - 20

Marquette University Stadium



Saturday Afternoon, October 24

What's Inside



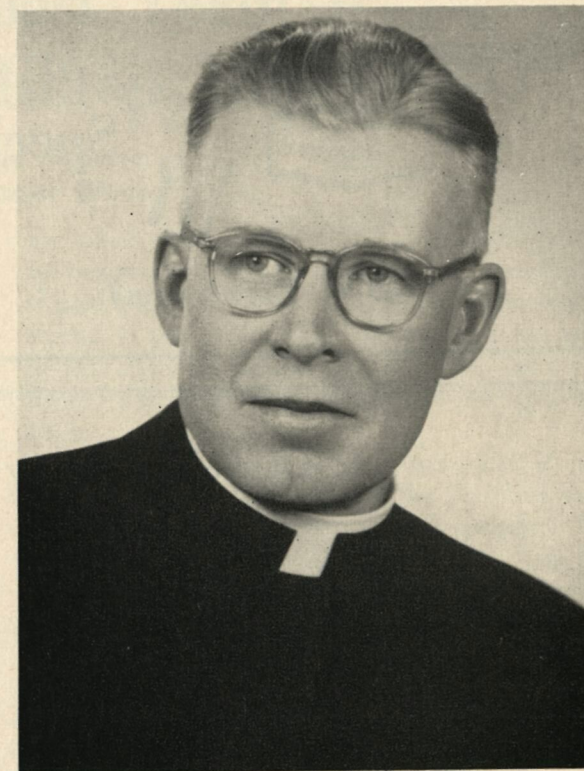
President's Message	5	Drzewiecki—Marquette's 'Natural'	31
Powerful Coast Team Is Threat	7	College of the Pacific Roster	35
Alumni Message	8	College of the Pacific Players	37, 39
Marquette Coaching Staff	11	College of the Pacific Coaching Staff ...	41
Marquette Football Squad	13	C.O.P. End Is Threat to Marquette	43
Statistics Charts	14, 15	C.O.P.—California's First College	45
Marquette Roster	16	College of the Pacific Campus	47
Homecoming Sweethearts	17	Past Scores of Marquette	49, 51, 53
Homecoming High Points	19	Marquette Songs	53
Homecoming Committee	21	Marquette Cheers	55
Marquette Cheer Leaders	23	Marquette Football Statistics	57
Marquette Players	25, 26, 27, 28	Detroit Is Next to Invade Hilltop	59
Men Directing the Marquette Squad	29	Parents' Day—Nov. 7	61



Published by
Marquette University Press
J. L. O'Sullivan, Director

Prepared with the co-operation of the
Marquette University News Bureau,
Ted Carpenter, Director

Very Reverend
Edward J. O'Donnell, S.J.
President, Marquette University



My dear Fellow Alumni:

A most hearty welcome back to your Alma Mater. We hope that your stay with us will be a most enjoyable one for you.

Since last Homecoming, we have realized some of our hopes and dreams for a greater Marquette. The new Brooks Union is now in use, and I am sure you will agree that it is a most worthwhile addition to our facilities. I hope you understand that it is your building as well as the students'. It was your fine interest and generosity which made it possible, so we want you to make use of it whenever you wish.

The new Library is also in operation, and when all the furnishings are in it, I think you are going to be very proud of it. As you know, we have needed additional library facilities for a long time, and the new building will give us these facilities and enable us to expand our academic program.

The new addition to our Medical School will, I am sure, be a source of pride to the Medical alumni, whose marvelous generosity has made it possible.

These are the tangible things which we have to show you in our Development Program. Back of them are constant efforts to improve and amplify our academic offerings. The whole program has but one aim, and that is to give our students the best training possible for their life career, and at the same time, to impress upon them a realization of their responsibility to be leaders in the fight being waged today against the alien philosophies of life which threaten the peace and security of the world.

May you enjoy your Homecoming and may God abundantly bless you and all your interests.

Yours very sincerely,

E. J. O'Donnell, S.J.
E. J. O'Donnell, S.J.

**Western Machine
Company**



Producers of Special Machine Products

Tel.: HUmboldt 3-8300

180 W. Holt Avenue • Milwaukee 7, Wisconsin

There's a Story Behind X-Ray

The tiny dental x-ray film you hold in your mouth . . . the compact equipment in the chest x-ray bus . . . the huge, complex high voltage medical and industrial x-ray unit . . . these are the outward signs of the science of x-ray.

Behind them stand the endless hours of research, engineering and manufacturing which make these units possible and the years of technical and scientific training of the people who operate them. All this is directed toward

furthering the comfort, length and convenience of your life.

General Electric X-Ray, as the world's oldest and largest manufacturer of x-ray, is proud of the part it has played in the progress of this science since its inception only 57 years ago. You can read a dramatic account of this fascinating business by writing for booklet MH49 "The Story of X-Ray," at X-Ray Dept., General Electric Co., 4855 Electric Ave., Milwaukee 1, Wis. GE's outstanding record in this field is another example that

You Can Put Your Confidence in

**GENERAL  ELECTRIC
X-RAY DEPARTMENT**

4855 W. ELECTRIC AVENUE

MILWAUKEE 14, WISCONSIN



Good Luck -- Marquette!
from Your District Attorney

William J. McCauley

Marquette University Law '23

Powerful Coast Team Is Threat to Hilltop Hopes

by George Walter
Tribune Sports Editor

If the hopes of the Marquette football team are realized, this afternoon's game with College of the Pacific will be the coronation of a week of royal Homecoming festivities. But the perennially powerful Coast eleven poses a formidable threat to the regal aspirations of the Hilltoppers.

Coach Jack "Moose" Myers has guided his College of Pacific Tigers to a 2-3 record. The Tigers shaded Stanford 25-20 in the opener, dropped a 26-20 decision to Washington State, bowed to Tulsa, 22-13, picked up a 20-8 victory over the University of Hawaii and lost to Texas Tech, 34-7.

Coach Lisle Blackburn's Hilltoppers, possessors of a 3-2 record, and fresh from their rout of Arizona last Saturday, will be seeking the first Marquette victory over C.O.P. in the third renewal of the intersectional series. The invading Bengals won the opening game in 1951, 39-27, here at the Stadium. Last year, at Stockton, Marquette equalized a three touchdown half-time deficit to salvage a 27-27 tie.

Marquette victory hopes today hinge primarily on the running of breakaway backs, Ron Drzewiecki and Ray Zagar, the power plunges of Fullback Dave Donarski, and the generalship of Quarterback Dick Shockey.

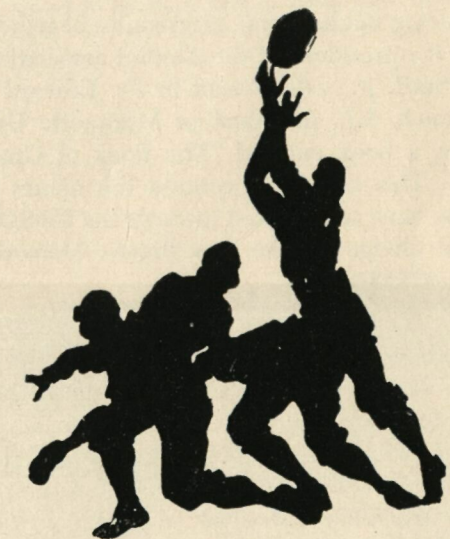
Drzewiecki and Zagar have repeatedly shown ability to chalk up sizeable gains on sweeps and quick openers, and Donarski has been a consistent gainer on straight power plays up the middle. Shockey, a husky sophomore, has given the Hilltop ground attack added potency with his smooth execution of the split T-quarterback option play. In addition, Shockey has handled the passing chores effectively, with Ends Tom Braatz and George Brehm, and Zagar as the chief targets.

Marquette's second unit backfield, with Jim Hanley at quarterback; Lou Spycala and Don Molenda at halfbacks, and Bob Girman at fullback, supply added offensive punch to the Hilltop attack. This reserve contingent, capable of moving the ball well, has been alternated periodically with the first unit.

Quarterbacks Bill Jacobs and Roy Ottoson are

the chief cogs in the C.O.P. offensive machine. Both signal callers are air-minded and have demonstrated passing finesse. Last season, Ottoson was second in passing only to Washington's All-America Don Henrich, on the Pacific Coast. Jacobs was named the outstanding California prep player in 1951.

Rangy Ken Buck, who rewrote C.O.P. pass-catching records last year, will be the chief target for the pitches of Ottoson and Jacobs. Buck grabbed 23 passes for 216 yards in the first three College of the Pacific games this year.



C.O.P. primarily employs the T formation, but Coach Myers has added a few new wrinkles of his own. Basically a ground attack team in the past, the Tigers have relied more on passing this year.

The visitors' chief weakness is lack of depth and also size in the line. The Marquette forward wall, with an average of 206 pounds, possesses an 11 pound advantage over the C.O.P. line.

On the basis of comparative scores, Marquette should emerge victorious today. College of Pacific lost to Tulsa, 22-13, while Tulsa was beaten, 14-7, by Cincinnati the previous week. The Hilltoppers humbled Cincinnati, 31-7, early in the season, and on that basis should rate the nod over Pacific.

Alumni Message

Welcome back to the Hilltop!

The Marquette University Alumni Association hopes that your visit will be an enjoyable one. It invites all alumni to visit the many new buildings on the campus—Business Administration building, O'Donnell Hall for girls, Carpenter Hall (formerly the old Union), the Brooks Memorial Union, the Library and the Dental-Medical library.

The Marquette University Alumni Association is composed of all graduates and former students who have completed at least two semesters of work in any of the various colleges and schools of the university. At the present time, there are approximately 25,000 names of men and women who live in all parts of the United States, as well as in many foreign countries, on our mailing list.

During the half-time ceremonies of today's game the president of the Alumni association, John Staff, jr., will present to Fr. Edward J. O'Donnell, S.J., president of Marquette University, a book entitled "The Book of Gratitude." This book will contain the names of all who have contributed towards the \$300,000 alumni pledge for the new Brooks Memorial Union.

In addition to the general Alumni Association, there are various affiliated groups, namely, the Association of Marquette University Women, Business Administration Alumni Association, Dental Alumni Association, Engineering Alumni Association, Law Alumni Association, Medical Alumni Association, Nurses' Alumnae Association and the Journalism Alumni Association.

The Association of Marquette University Women, formerly known as the Marquette University Alumnae Association, is responsible for the development of dormitories for coeds on the Marquette campus. It was through the Marquette University Alumnae Association that the first coed dormitory, Alumnae House (on the corner of Twelfth and Kilbourn) was open. Within the last year, the Association of Marquette University Women has turned over to the university the women's dormitories and is now devoting its efforts toward scholarships.

The present officers of the General Alumni Association are: John C. Staff, Jr., Eng. '35, president;

Dr. Delbert P. Nachazel, Dent. '28, vice-president and president-elect; Miss Helen McCabe, Jour. '31 and Grad. '35, secretary; and Ray A. Weber, Bus. Ad. '24, treasurer.

The elected representatives set the annual dues, which are as follows: Arts, Graduate, Music, Pharmacy, Speech, Medical Technology and Dental Hygiene—\$3.00; Engineering—\$3.50; Business Administration, Journalism and Nursing—\$4.00; and Dental and Law—\$5.00. The Medical alumni board of directors at a recent meeting decided to raise the annual fees from \$4 to \$5, beginning January 1, 1954. Each paid up member of the Medical Alumni Association will receive a subscription to the Marquette Medical Review.

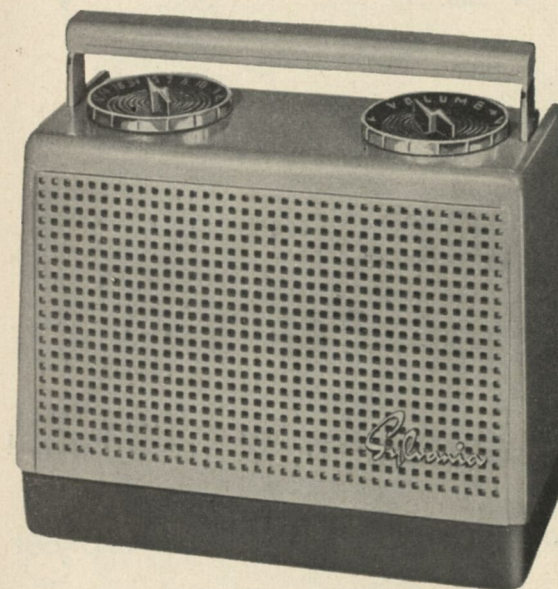
Among the activities of the association is the publication of the Marquette Alumnus five times a year. It is sent to all alumni whose addresses are listed on our roster. The association also aids in promoting Homecoming activities, class reunions, alumni chapters in cities outside of Milwaukee, lecture series and other events of a social and educational nature.

During the last few years there have been three alumni fund campaigns operating on the campus—the Father Peter Brooks Memorial Union, Medical and Dental. The Brooks Memorial Union fund will come to a successful close on Homecoming Day, with the total pledges exceeding the goal of \$300,000. The Medical and Dental funds will be continued until the achievement of their goals. Officers and directors of the alumni association are studying various plans for Marquette alumni to aid their Alma Mater. The majority of the larger colleges and schools in the country have established ALUMNI FUNDS. Under this system, alumni contribute annually to their school.

The Rev. Clarence J. Ryan, S.J., is vice-president in charge of public relations and development, and the Rev. Charles M. O'Hara, S.J., has been director of the Father Peter Brooks Memorial Union fund. The actual detail work of keeping in contact with the 25,000 alumni is directed by Ray H. Pfau, executive secretary, who has his offices on the second floor of the Union building. His staff includes: Mary Boyce, Mary Blade Buchta, Jour. '28w, Barbara Moritz, Audrey Reinke and Rita Stubinski. Mr. Pfau and his aides are ever ready to serve Marquette alumni at all times.

Add Color to Your Music...and your life with SYLVANIA RADIOS

FOR INDOOR AND OUTDOOR USE



The Sylvania Catalina

★ A COLORFUL COMPANION
WHEREVER YOU GO!

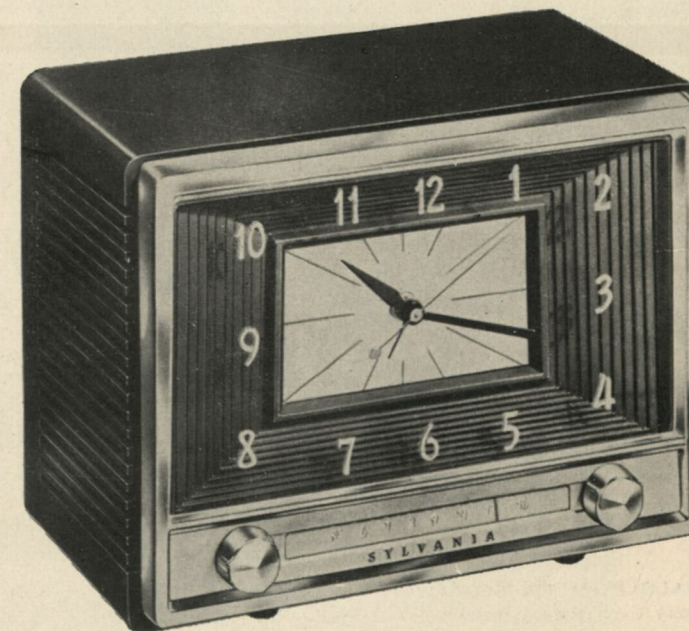
- ★ Powerful! Operates on long-life battery or AC or DC! Studio Clear* Sound!
- ★ Battery base removable for indoor use. Plays in both upright or flat position.
- ★ Comes in six smart indoor-outdoor color combinations . . . one to suit you perfectly!

The Sylvania Night Lighter RADIO-CLOCK

with
PANELESCENT* DIALS

*The Most Dramatic, Useful
Radio-Clock You Can Buy!*

- ★ It's new! It's exclusive! For the first time anywhere, a sheet of glass made luminous by the magic of science . . . on both clock face and radio dial. It's a wonderful night light!
- ★ An accurate clock . . . a full-toned radio!
- ★ Lulls you to sleep . . . wakes you up to music! Operates household appliances!
- ★ In 7 smart colors . . . a shade for every taste!



*SYLVANIA trademark

Radio Parts Company, Inc.

538 West State Street

Milwaukee 3, Wisconsin

Wherever You Live... SYLVANIA TV



TOPS 'EM ALL

for...

- ★ FRINGE AREA RECEPTION!
- ★ ALL-CHANNEL UHF-VHF TUNING!
- ★ BRIGHTEST, CLEAREST PICTURES!
- ★ MUCH GREATER EYE-COMFORT!

Only

SYLVANIA TV *has* HALOLIGHT and PHOTOPOWER

The Frame of Light That's Kinder to Your Eyes

HALOLIGHT, the eye-comfort feature becomes more popular every day. When you see it for yourself, you, too, will know that for complete television pleasure . . . there's no substitute for HALOLIGHT! It even makes the pictures seem larger!

For Photographic Clarity Even in Distant Reception

City or country, Sylvania TV with new PHOTOPOWER Performance can't be beat when it comes to the best reception. When you own a new 1954 Sylvania TV receiver, you can be sure to enjoy the best pictures and sound in your neighborhood.

Radio Parts Company, Inc.

538 West State Street

Milwaukee 3, Wisconsin

HILLTOP COACHING STAFF



(Sentinel photo)

Left to right: Assistant Coach John Powers; Freshman Coach Carl Schuette; Line Coach Orv Dermody; End Coach Robert (Doc) Erskine; Head Coach Lisle Blackburn; First Assistant and Backfield Coach George Terlep.



Rugged
Brogue With
Hand-Sewn Tip
and Storm Welt

Kickoff Favorites
For Smart Styling
And Long Wear



WEYENBERG

Shoes for men

CHARLES STRAUSS

Weyenberg Shoes for Men

Bankers Building

214 East Wisconsin Avenue

For Your Convenience, Open Monday and Thursday Evenings

Barnes Advertising Agency Inc.

312 EAST WISCONSIN AVENUE

MILWAUKEE

Serving the Finest and Most Progressive Firms in Milwaukee



Johnny Sisk, '33
Special Agency Assistant

BANKERS LIFE COMPANY

for

Life Insurance
Annuities

Accident
& Sickness

Group Insurance
Pension Plans

L. W. SPICKARD, *Agency Manager*

110 E. Wisconsin Ave. Bldg.

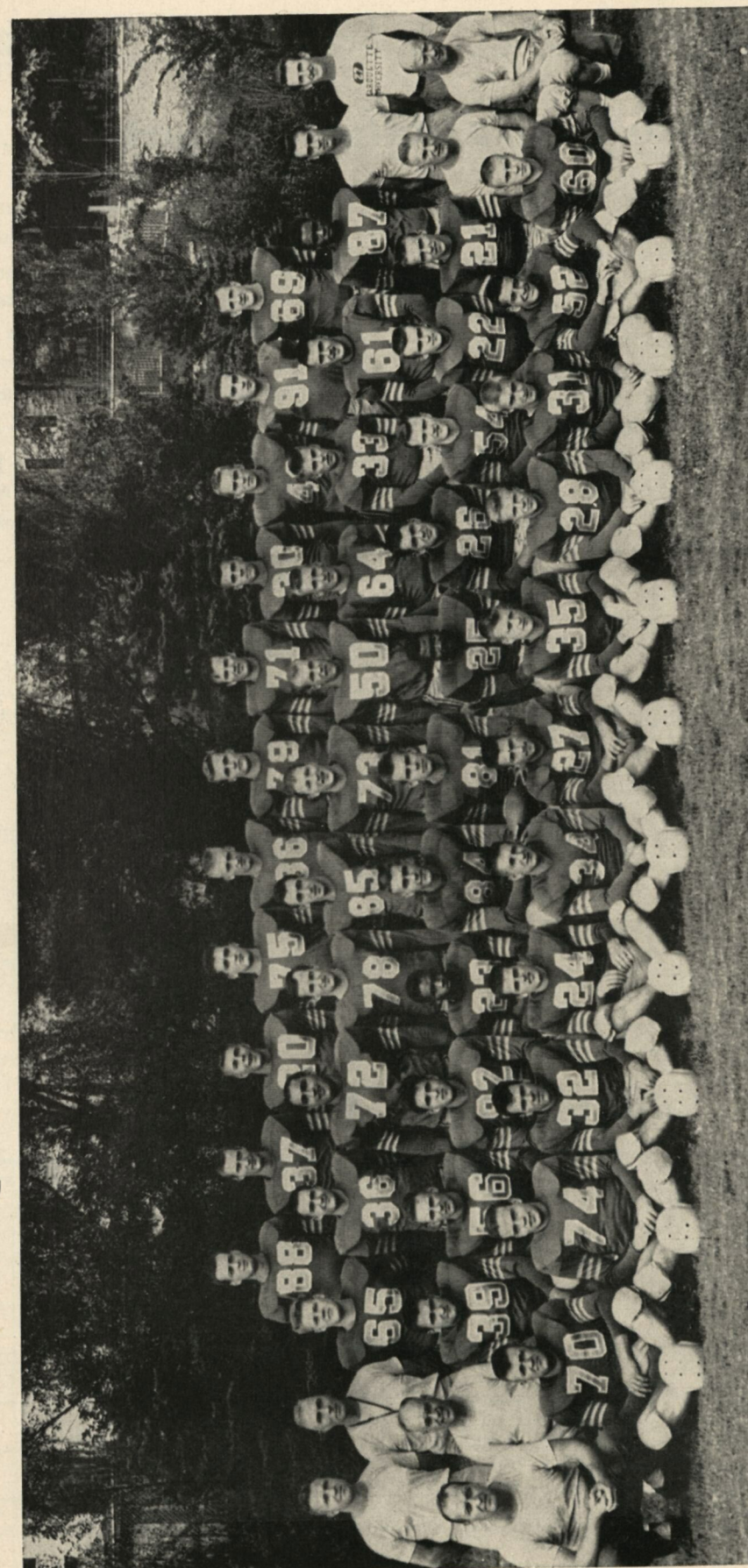
Suite 915

Milwaukee 2

DAly 8-3576



1953 MARQUETTE UNIVERSITY FOOTBALL SQUAD



(Sentinel photo)

BOTTOM ROW: (left to right) Fred Kubsch; Ray Dwyer; Ed Mixan; Ray Zagar; Darwin Zimmerman; Dave Donarski; Terry Ward; Dick Van Bendegon; Bob Girman; Tom Peterson, and John Zellner.

SECOND ROW: (left to right) Trainer Bob Weingart; End Coach Rovert (Doc) Erskine; Tony Winkler; Ed Jaro; Wayne Brandt; Al Thomas; Co-Capt. Ed Frank; Co-Capt. Dick Raebel; Fred Connally; Jim Hanley; Pat O'Shea; Lou Spycalla; Ron Drzewiecki; Line Coach Orv Dermody, and Asst. John Powers.

THIRD ROW: (left to right) Backfield Coach George Terlep; Head Coach Lisle Blackburn; Al Turner; Don Molende; Frank Scaffidi; Jim Pasterski; George Brehm; Mary Swentkofske; Dean Mielke; Stan Andrie; Fred Piet; Ted Stengel; Hosea Sims; Freshman Coach Carl Schuette, and Mgr. Dave Wypiszinski.

TOP ROW: (left to right) Tom Kuesel; Dick Varish; Al Janikowski; Dale Lewis; Art Katula; Jerry Peterson; John Madden; Jim Lumber; Ron Rudy; Lou Gral, and Norm Sobczak.

How to Keep a Statistics Chart

First Downs: When Marquette scores a first down on passes, penalties or scrimmage plays, place an X in the quarter in which it is made. Follow the same procedure in the succeeding quarters.

Penalties: If Marquette loses five yards on an off-side penalty and then another five yards, total the two (10). For each penalty add the loss to the preceding total. This will enable the recorder to know at a glance how many yards were lost on penalties.

Punts: If Winkler punts 45 yards, place the total in the No. 1 column. If on his next punt he kicks 55 yards, add the 45 to the 55 and place the total (100)

in the No. 2 column. This also will help the recorder to know off hand how many yards were made.

Passes: In the line captioned "completed," record the information as follows: (Hanley to Raebel 10), the 10 designating the yards gained. Use X marks after each pass "attempted" and "incompleted," and under "intercepted" also record the name of the interceptor.

Individual Records: Follow the same procedure as in the punting records, adding the yards gained in the down to the preceding down. On losses circle the number.

Marquette University

PLAYERS	1	2	3	4	5	6	7	8	9	10	11	12	TOTALS

College of the Pacific

PLAYERS	1	2	3	4	5	6	7	8	9	10	11	12	TOTALS

FIRST DOWNS

TEAMS	CLASSIFICATION	1st QUARTER	2nd QUARTER	3rd QUARTER	4th QUARTER	TOTALS
MU	SCRIMMAGE					
	PASSES					
	PENALTIES					
CP	SCRIMMAGE					
	PASSES					
	PENALTIES					

PENALTIES

TEAMS	FIRST HALF	SECOND HALF	TOTALS
MU			
CP			

PUNTING RECORD

TEAMS	PUNTER	1	2	3	4	5	6	7	8	9	10	1	2	3	4	5	6	7	8	9	10	TOTALS
MU																						
CP																						

FORWARD PASSES

TEAMS		FIRST HALF	SECOND HALF	TOTALS
MU	ATTEMPTED			
	COMPLETED			
	INCOMPLETE			
	INTERCEPTED			
CP	ATTEMPTED			
	COMPLETED			
	INCOMPLETE			
	INTERCEPTED			

HILLTOP ROSTER

No.	Name	Hometown and High School	Pos.	Wt.	Ht.	Age	Yr.
19	Richard Shockey	—Brookfield, Ill., Fenwick	Q	210	6-3	20	2
20	Alex Janikowski*	—Cudahy, Wis., Cudahy	Q	180	6-0	19	3
21	Ronald Drzewiecki*	—Milwaukee, Boys' Tech.	H	181	5-10	20	3
22	Louis Spycalla*	—Milwaukee, Pulaski	H	176	5-11	19	3
23	Alvin Thomas*	—Gary, Ind., Froebel	E	192	6-0	21	4
24	Raymond Zagar*	—Milwaukee, Washington	H	175	5-10	19	3
25	Frederick Connally	—Evanston, Ill., Township	H	181	5-11	23	2
26	James Hanley*	—Milwaukee, Cathedral	Q	185	5-11	22	4
27	David Donarski	—Green Bay, Wis., C. Cath.	H	186	5-9	18	2
28	Richard Van Bendegon	—Milwaukee, Don Bosco	H	165	5-9	19	2
30	James Lumber	—Ingleside, Ill., Grant	C	188	6-2	18	2
31	Robert Girman	—Kenosha, Wis., Kenosha	F	185	5-10	18	2
32	Edgar Mixan*	—Waukegan, Ill., Waukegan	H	173	5-8	21	3
33	Frederick Piet*	—Chicago, Ill., Mt. Carmel	H	184	5-11	20	3
34	Darwin Zimmerman	—Green Bay, Wis., West	F	183	5-9	20	3
35	Terrence Ward	—Chicago, Ill., Mt. Carmel	H	162	5-9	18	2
36	Donald Molenda*	—Milwaukee, Pulaski	H	191	5-11	21	3
37	Richard Varish	—Milwaukee, Washington	E	183	6-0	20	4
39	Anthony Winkler*	—Milwaukee, Pius XI	F	195	5-10	20	3
40	Ronald Rudy	—Kenosha, Wis., Kenosha	H	175	6-1	19	3
50	Dean Mielke*	—Milwaukee, Washington	C	195	6-0	19	3
52	Thomas Peterson	—Manitowoc, Wis., Lincoln	C	181	5-10	20	2
54	Patrick O'Shea	—Chicago, Ill., Mt. Carmel	G	183	5-10	18	2
56	Edward Jarosz*	—Racine, Wis., St. Catherine	C	183	5-10	21	3
60	John Zellner	—Two Rivers, Wis., Two Rivers	G	200	5-10	19	2
61	Theodore Stengel	—Green Bay, Wis., East	G	210	5-11	19	2
63	Clarence Snyder*	—Chicago, Ill., Mt. Carmel	G	175	5-10	20	3
64	Stanley Andrie*	—Grand Rapids, Mich., C. Cath.	G	205	6-0	20	3
65	Albert Turner	—Milwaukee, West Division	T	220	5-11	21	3
69	Norman Sobczak*	—Milwaukee, So. Division	G	202	6-0	21	4
70	Frederick Kubsch	—Manitowoc, Wis., Lincoln	T	215	6-0	21	2
71	John Madden	—Chicago, Ill., St. George	T	197	6-2	18	2
72	Frank Scaffidi*	—Milwaukee, East	T	242	6-0	21	3
73	Marvin Swentkofske*	—Milwaukee, Washington	G	215	6-0	21	3
74	Raymond Dwyer	—Milwaukee, Marquette	G	200	5-11	18	2
75	Dale Lewis	—Rib Lake, Wis., Rib Lake	T	218	6-2	20	2
78	James Pastorski	—Milwaukee, Pulaski	T	205	6-0	21	2
79	Gerald Peterson*	—Grayslake, Ill., Grayslake	T	207	6-2	21	4
81	Richard Raebel**†	—Milwaukee, Pulaski	E	210	6-1	19	4
84	Edward Frank**†	—Cedarburg, Wis., Cedarburg	T	198	6-3	20	4
85	George Brehm	—New Haven, Conn., Notre Dame	E	187	6-2	21	3
86	Arthur Katula	—Chicago, Ill., St. Leo	E	191	6-1	18	2
87	Hosea Sims*	—Fremont, O., Ross	E	191	6-0	21	4
88	Thomas Kuesel	—Milwaukee, Marquette	E	189	6-0	19	2
90	Thomas Braatz*	—Kenosha, Wis., Kenosha	E	201	6-½	21	3
91	Louis Gral	—Milwaukee, Marquette	E	194	6-1	18	2
92	Wayne Brandt*	—Milwaukee, Washington	G	188	5-10	20	3

*—Denotes Varsity Letters Won

†—Denotes Co-Captains

MEET THE 1953 HOMECOMING SWEETHEARTS



Meet the 1953 Homecoming Sweethearts who were chosen for this year's event by the Homecoming committee. Standing (left to right): Sue Hutchinson, junior in Nursing; Joyce Mogilka, senior in Dental Hygiene; Pat Burns, junior in Speech school; Sally Dunphy, junior in Business Administration, and Terry McMillan, junior in Liberal Arts. Seated (left to right): Marjorie Gaffney, senior in Journalism, and the honorary parade marshal, W. R. McGovern, who is a graduate of Marquette in the class of 1900, and Joan Jordon, senior in Medical Technology.

NORDBERG



Builders of
**DEPENDABLE
MACHINERY**

High Points of Homecoming On the Hilltop

by Ted Carpenter
Director, Marquette News Bureau

One is really getting along when he is asked to reminisce in public print, but the assignment is a pleasant one in this case since it brought the opportunity to recall some of the happiest memories of student days and the first thrills of alumni participation in Homecoming.

We call it Homecoming, for want of a better word. Indeed it is Homecoming for those who return in a spirit of loyalty, sentiment and good, clean fun, but the name is a misnomer. It's traditional to this day that student participation in the annual glorious, festive, autumn weekend is 75 per cent of the show, yet the undergraduates share not in the title.

There have been no complaints on this score, and your correspondent will probably be put down as an old grouch for even mentioning it. And, anyway, there are those who will argue that it also is Homecoming for the students, who by their public demonstrations of the weekend give evidence of their hospitality to the visiting firemen. We're sorry we brought it up.

We have no desire to erase from our memory the pleasant recollections of what must have been our first Homecoming, the three day shindig of 1921. We participated as a student and learned then what the freshmen are learning now, that The Big Week may have been designed for the old grads but it's the highlight of the year for those on the campus as well!

There was a parade up Grand avenue (now Wisconsin avenue) on a Thursday night and, lest the Palace theater be "rushed," we were herded afterwards to the baked clay State street campus for a red-hot rally around a roaring bonfire. Then we went to a Marquette theater party in the jam-packed old Majestic on Friday night.

Notre Dame was the football opponent at Athlete park (Borchert field), Saturday afternoon. Jack Ryan's Hilltoppers scored first, but Knute Rockne's team won a tough one, 21-7.

The game was the thing at Homecoming of 1922.

Marquette faced a terrific University of Detroit

eleven, which sported the soon-to-be-famous Gus Sonnenberg as one of its tackles and which was leading at the half, 3-0, by virtue of a place-kick by one Paul Hogan. It was the first time Marquette had trailed at any time that season.

But the golden toe of Joseph Aloysius (Red) Dunn, as always, was equal to the occasion. The Redhead, who has always been the number one all-time Hilltop grid great in our book, blasted a place-kick in the third quarter and another in the fourth. We won, 6-3!

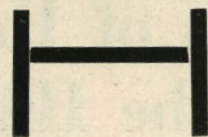
Our first Homecoming as an alumnus was one of the most memorable in the University's history. eW have always looked back on it as the Al Reichard Homecoming because Mr. Reichard was the alumni chairman of a weekend that has rarely been matched in enthusiasm on the Hilltop. This was in 1923.

Again, football was a highlight and the populace, anxious to give a final salute to Red Dunn and the boys who had been undefeated for two years, turned out full force. Actually, the were hanging on the scoreboard and fences as an estimated 20,000 fans jammed into the old baseball park to say farewell to Frank Murray's great team.

A Vermont outfit which had beaten Yale the year before and trimmed a Middlebury outfit which tied Harvard was the lure. Dunn was at his best as he scored one touchdown, forward passed for two others and added two conversions in a brilliant 20-0 victory.

There've been other Homecomings, and we haven't missed a one. We remember the satisfaction of a 14-0 triumph over a really good Kansas State team in 1926, and the doldrums when Eck Allen and his West Virginians overwhelmed us, 34-7, in 1932. We recall Pat O'Brien's prediction of victory at half-time in the Michigan State game of 1940, and it came true. We'll never forget the Ann Blythe visit in 1949, nor the thrill of that Leahy to Tobias pass which beat Holy Cross in '50 and the power shown in the 27-0 defeat of Miami of Ohio in '51.

Now if we can just repeat against the Tigers!"



is your **GOAL** a **NEW** or a **GOOD USED CAR** ?

Let **"THE OLD RELIABLE"**

All-American Sales Squad Carry the Ball for You

Harold Conrad	Thomas Keenan	Arthur Lusty	Frank Cavanaugh	Walter Rohrbach	Andrew O'Keefe	Clarence Olsheske
	Bernard Rohrbach	Walter Orten		Hugo Noennig		
Leo Long		Leonard Zenner			Tom Noll	

NORTHWESTERN-FORD

2428 W. NORTH AVENUE

Open Evenings 'till 9 --- Saturdays 'till 5

Division 4-4610

J. J. JONES COMPANY

4020 N. Port Washington Ave.

Milwaukee 12, Wisconsin

Millwork and Hardware

Telephone Woodruff 2-4200

Dosie & Johnson Co.

Craftsmen in Lithography

**263 E. State Street
Milwaukee 2, Wisconsin**

Look for the label
with the lion



At leading shops
and department stores



Chuck Eller, Dental School senior, is shown above addressing the 1953 Homecoming committee.

The 1953 Homecoming Committee

JOHN L. MOODY, a junior in Medical school, is co-chairman of city advertising. John is a member of Phi Chi, international medical fraternity.

TERRY McMILLAN is a junior in Liberal Arts, a member of Theta Phi Alpha sorority, the Inter-sorority council and the Junior-Senior Coed board.

JOYCE MOGILKA, co-chairman of the pep rally, is a member of Chi Sigma Chi. Joyce is a senior in Dental Hygiene.

JOAN JORDAN is co-chairman of the Mixer committee. She belongs to Kappa Beta Gamma. Joan is a junior in Medical Technology.

PAT BURNS is a junior in the School of Speech and co-chairman of city advertising. She belongs to Chi Sigma Chi sorority.

SALLY DUNPHY, a member of Kappa Beta Gamma sorority, Commerce club and Sailing club, is co-chairman of the parade committee. She is a junior in Business Administration.

GENE SCHMIT, a senior in Engineering, is co-chairman of the mixer committee. Gene belongs to Triangle fraternity and the Engineering Knights.

SUE HUTCHINSON is co-chairman of Liaison and a junior in the College of Nursing. She is a member of Kappa Beta Gamma.

BILL CONNELL, co-chairman of the Liaison committee is a senior in Law school. Bill is vice-chancellor of Sigma Nu Phi, national legal fraternity and a staff member of the Law school paper.

DON HAGMAN, general chairman of the Homecoming committee, is a senior in Business Administration and president of Alpha Sigma Nu, national honorary Jesuit fraternity.

JIM STITT, a senior in the College of Journalism, is a co-chairman of the general publicity committee. He is treasurer of Sigma Delta Chi.

JOHN STEFFES, co-chairman of the pep rally committee, is a senior in Liberal Arts. John is a company commander in the NROTC.

MARJORIE GAFFNEY, co-chairman of the general publicity committee, is president of O'Donnell Hall, girls' dormitory, and a member of Kappa Beta Gamma and Theta Sigma Phi sororities. Marge is a senior in Journalism.

CLINT BOONE, a senior in Law school, is co-chairman of the parade committee. He is a vice-dean in Delta Theta Phi, national legal fraternity.

CHARLES ELLER, Dental school senior, is co-chairman of the dance committee. Chuck belongs to Delta Sigma Delta, dental fraternity.

Badger Paint Stores

for "Factory-Fresh"

MasterCraft Paints

Now There Are
34 Stores in Milwaukee

Hob-Nob Restaurant & Bar

Complete Dinners Starting at 5 P.M.

SH 4-9870

3158 S. Howell Ave.

Good Luck Marquette!

ELMER W. ROLLER

M. U. Law '22

James L. Callan, Inc.

Investment Real Estate

4417 W. NORTH AVE.

NORTH SHORE STATE BANK

Oakland at Capitol
Shorewood 11, Wis.

Member Federal Deposit Insurance Corp.

Serving More Homes
Than Ever Before
With

- ☆ Aluminum Products
- ☆ Waterless Cookware
- ☆ Coffee Makers
- ☆ Gift Ware
- ☆ Appliances
- ☆ Outboard Motors
- ☆ Industrial Engines

WEST BEND
Aluminum Co.
WEST BEND, WISCONSIN



(Photo by Sankovich)

The Marquette cheer leading squad in action at the Hilltop stadium. Left to right:
Jim Riester, Tom Shantz, Tom Ploss, Karl Zaeske, Jim Hanrahan and Jim Treible.

Marquette's Men of Good Cheer

JIM RIESTER: Jim, who has a degree in Business Administration, is a freshman in Law school at the present time. He is a member of Alpha Kappa Psi, Business Administration fraternity, and Alpha Phi Omega, national service fraternity.

TOM SHANTZ: As captain of the cheer leaders, Tom has done a good job in developing the squad this year. He belongs to the NROTC unit on campus and is a member of Triangle, an engineering fraternity. Tom, who is a senior in the College of Engineering is a co-editor of the Marquette Engineer, a quarterly magazine published for engineering students. He is also a member of the Engineering Knights.

TOM PLOSS: Tom, a junior in the College of Liberal Arts, was the president of the Marquette-

Rockford club last year. At the present time he is the treasurer of Alpha Phi Omega, the service fraternity, and is a member of the German club.

KARL ZAESKE: Karl is a senior in the College of Business Administration and an active member of Delta Sigma Phi, a Business Administration fraternity.

JIM HANRAHAN: A senior in mechanical engineering, Jim is a co-op this year. He is a member of the Engineering Knights and Sigma Phi Delta, an engineering fraternity.

JIM TREIBLE: Jim, who is a co-op also, is a senior in electrical engineering. He is a member of Sigma Phi Delta along with Hanrahan and he, also, belongs to the Engineering Knights.

MARQUETTE BOOSTERS

Jos. B. Armitage

Roland W. Bayerlein

George A. Bowman

Bernard V. Brady

Jos. M. Carpenter

Charles L. Coughlin

John P. Eisenmann

Will C. Gobel
Attorney-at-Law, M. U. '26

Morton R. Hunter

Walter Kassuba
Real Estate

Kroenert Tool & Die Co.

Wm. J. McCauley
District Attorney, M. U. '23

Cyrus L. Philipp

Walter M. Swietlik
Commissioner of Public Works

Louis Quarles

H. W. Zummach

Abbot Crest Hotel

Henry J. Ball & Sons

Becker Electrotpe Co.

S. J. Casper Co., Inc.

Cohen Bros.

J. F. Cook Co.

Donald Sales & Mfg. Co.

A. L. Kiefer Co.

Fraternal Order of Eagles
Ray Markey, Secretary

**Machell Rubber
& Supply Co.**

**Northwest Dental
Laboratory**

Rosenbergs
3rd & North Ave.

Schaefer Brush Mfg. Co.

Schoendorf & Schoendorf
MU Law, '20 & '51

Shaw, Muskat & Paulsen

Steinhagen & Steinhagen
Civil Engineers and Surveyors

Rud. J. Talsky, Inc.

Wauwatosa Realty Co.

The nation's
largest real estate broker
John A. Horning, Pres.

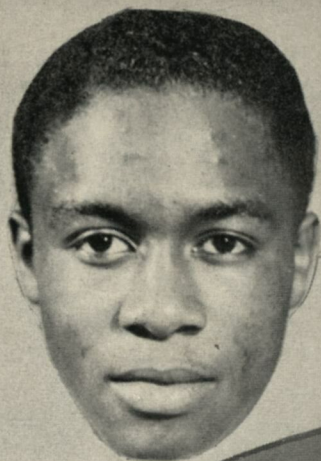
**Wisconsin Cold Storage
Co.**

**Wisconsin Cuneo Press,
Inc.**





RON
DRZEWIECKI
Halfback



HOSEA SIMS
End



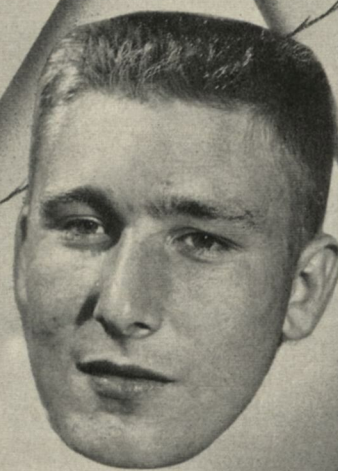
ED FRANK
CO-CAPT.
Tackle



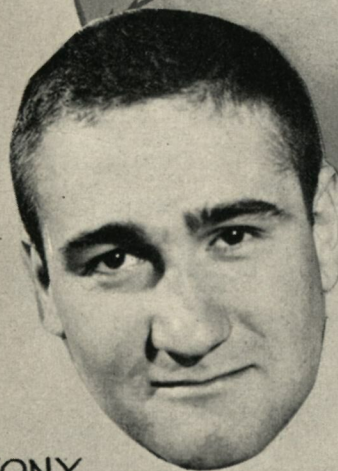
DICK
RAEBEL
CO-CAPT.
End



FRANK SCAFFIDI
Tackle



STAN ANDRIE
Guard



TONY
WINKLER
Fullback



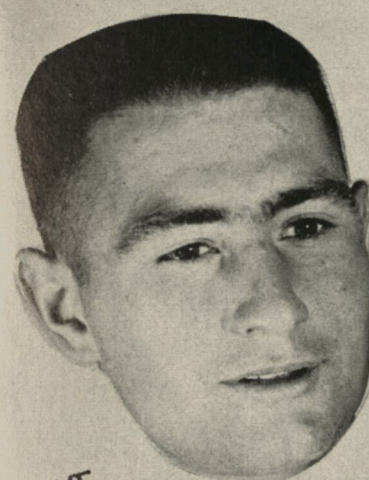
ED JAROSZ
Center



DEAN MIELKE
Center



GEORGE
BREHM
End



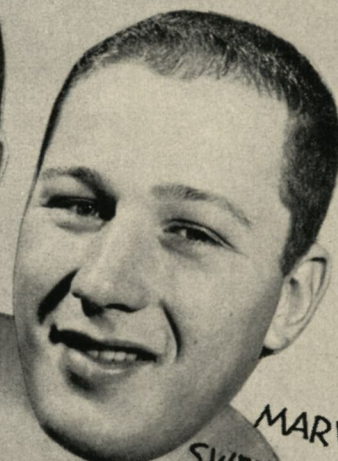
DAVE
DONARSKI
Fullback



DON MOLEND
Halfback



RAY ZAGAR
Halfback



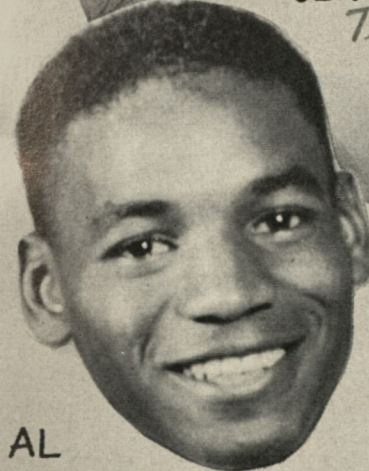
MARV
SWENTKOFKE
Guard



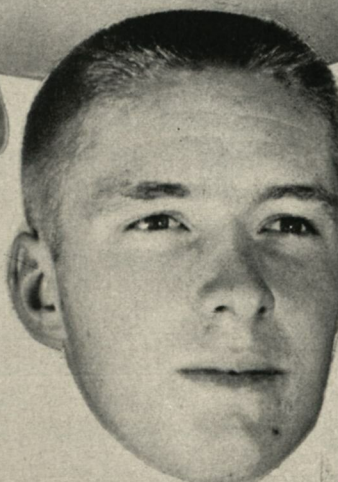
JERRY PETERSON
Tackle



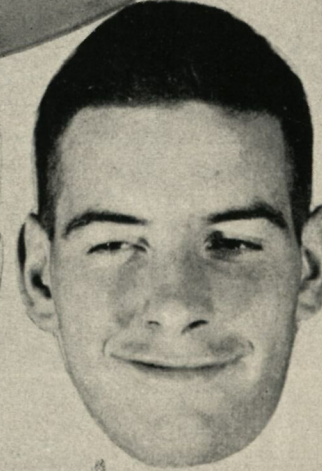
DICK VAN BENDEGON
Halfback



AL
THOMAS
End



BOB GIRMAN
Fullback



TOM PETERSON
Center



JIM
PASTERSKI
Tackle

Many Men of Great Talent Direct Marquette Squad

LISLE BLACKBOURN

Starting his fourth year as mentor of the Hilltoppers is Lisle Blackbourn, who took over the head coaching duties from Frank Murray following the 1949 season.

Coach Blackbourn brought to Marquette a long and distinguished record in the coaching profession. He began his athletic career at Lancaster (Wis.) high school, where he captained the football team and starred in basketball and baseball. In 1921, he enrolled at Lawrence college, Appleton, Wis., where he was captain of the Viking football team and of the baseball and wrestling teams.

Blackbourn was graduated in 1925 and began what was to become a phenomenally successful career as head football coach at Milwaukee Washington high school. During his 22 years as coach at Washington, Blackbourn's teams won a total of 135 games, while losing only 27 and tying 8. Only once did one of his teams finish out of the top four and 11 times his teams won or shared in the city championships.

In 1948 Blackbourn moved to Wisconsin to serve as backfield coach under Harry Stuhldreher and the following year moved to the Hilltop to take over as line coach under Frank Murray.

ORVILLE J. DERMODY

In charge of the forward wall is Line Coach Orv Dermody, who came to Marquette from St. Norbert college, West De Pere, Wis., in 1950.

Dermody was team captain and All-Coast end under Coach Tom Lieb at Loyola of Los Angeles. After graduation in 1933, Dermody served as football, basketball and hockey coach at Milwaukee Messmer high school until 1939. From 1940 to 1944 he was assistant to Lieb at the University of Florida. The following two years he was at St. Catherine high school, Racine, and in 1946-'47 at St. Francis, Milwaukee. From 1947 to 1950 he served at St. Norbert's.

ROBERT (DOC) ERSKINE

No stranger to Marquette is "Doc" Erskine, who is acting as end coach for the Hilltops this fall. "Doc" first came to Marquette in 1941 as assistant to Tom Stidham.

He began his coaching career at Loyola, where he was basketball and track coach from 1924 to 1926. From 1926 to 1933 he was in charge of all sports at New Orleans Jesuit high school and from 1933-'35 he was head football and basketball coach at Loyola. From 1935-'40 "Doc" was backfield coach at Oklahoma university, first under Biff Jones and later under Tom Stidham. He followed Stidham to Marquette in 1941.

GEORGE R. TERLEP

The newest member of the Hilltop coaching staff is first assistant and backfield coach, George Terlep. A star in high school in his home town of Elkhart, Ind., this 30-year-old gridiron wizard comes to Marquette with a spectacular college, service and professional background.

Terlep was a quarterback under Frank Leahy at Notre Dame in 1943 and 1944. He guided Paul Brown's famous Great Lakes team of 1945 and following his navy discharge, he alternated jobs with the Buffalo Bills professional club and classwork at Notre Dame. He quarterbacked the Bills in 1946-'47, and then played offensive quarterback and defensive safety for the Cleveland Browns in 1948. He was first assistant and backfield coach at South Carolina, 1949-'50, and held the same job at Vanderbilt, 1951 to 1952.

CHARLES (CARL) SCHUETTE

A teammate of Terlep on the Buffalo Bills, Carl is the only Hilltop graduate on the coaching staff. He starred in football and track at Central high school in Sheboygan, Wis., and enrolled at Marquette in 1941, playing one season at fullback.

Schuette served in the marines in World War II and then returned to Marquette where he played halfback and fullback from 1946 to 1948. He captained both the Hilltop grid and track squads and won the Central Collegiate conference javelin crown in 1946. A good student, Schuette was selected as the 1948 winner of the Robert McCahill award made annually to the outstanding senior athlete.

He played two seasons with the Bills, 1948-'49, and then starred as a defensive linebacker and halfback for two seasons with the Green Bay Packers, 1950-'51.



INSURE
WINTER
STARTING!



AT PATE DEALERS

ALLEN-BRADLEY CO.
MILWAUKEE

Electrical Control Apparatus
and Radio Parts

Best Wishes

Thomas Kattnig

Drzewiecki --- Marquette's 'Natural'

by Bert Thelen

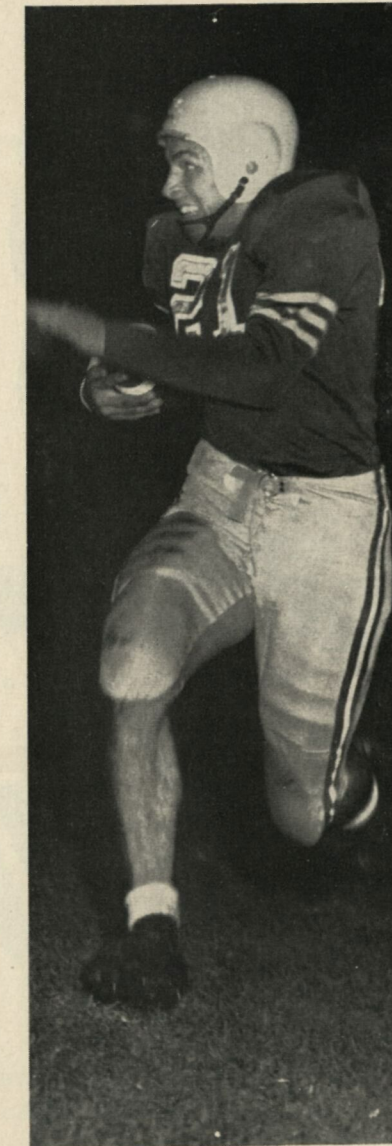
"A natural," is what football coaches call Marquette's star halfback, Ron Drzewiecki. Rated by many as the best punt and kick-off returner in collegiate football today, Drzewiecki has provided the scoring punch for the Hilltop grid team since he was a sophomore.

Now a junior in the College of Liberal Arts, Drzewiecki is one of the greatest running backs ever to ramble across the Marquette gridiron. Not a fast-breaking runner, he isn't easily stopped once he has gained momentum. His speed and tricky movements very often throw would-be tacklers off balance. But it is mostly his natural ability to judge where to run that makes Drzewiecki one of the best open field runners in the game.

Drzewiecki didn't wait until he came to Marquette to excel in football. While playing for Coach Jim Richardson at Milwaukee Boys' Tech he was an All-City back for two years—taking conference scoring honors during that time also. A five letter man, Drzewiecki wound up his brilliant prep career with an outstanding performance in the 1951 All-State game. He was the star of the game.

It didn't take Drzewiecki long to prove he could play college football. As a freshman, he was one of Marquette's leading ground gainers and pass receivers. Often referred to as the "Freshman Flyer," Drzewiecki thrilled the crowd in the '51 Detroit game with a 96-yard run.

Last year, as a sophomore, Drzewiecki hit his peak. He led the team in scoring with 14 touch-



Ron Drzewiecki

downs, he gained more than 500 yards, he was one of the leading Hilltop pass receivers, and he was tops in the nation in kick-off and punt returns. In addition, his 84 points were good enough to place him fourth nationally in college scoring.

With the abolishment of the two platoon system, there was some doubt as to Drzewiecki's defensive ability. But so far this season, the "Polish speedster" has shown that he can play single platoon football. In the first four games, he has been reasonably good at defense—in fact, Coach Lisle Blackburn said Drzewiecki has done much better than was expected. He makes good tackles and otherwise distinguishes himself defensively by intercepting passes.

Despite his concentration on defensive improvement, Drzewiecki is still the offensive threat he always was. He is currently the leading Hilltop ground gainer and scorer. In four games Drzewiecki has scampered 235 yards in the 33 times he has carried the ball—better than a seven yard average. He has scored four touchdowns and even does some of the Marquette punting.

A natural runner, Ron is still very conscientious about playing football. A short time ago, he

was working hard to improve his blocking. In a game following this workout, he made a particularly good block.

"How was that block?" he asked Quarterback Dick Shockey.

"That was fine, Ron," Shockey answered, "but you were supposed to carry the ball!"



Many top college and professional athletic teams—as well as companies, clubs and other organizations—use and endorse Capital's efficient, economical Special Flight Service.

A few of the Great Names in sports that have used Capital's Special Flight Service

Capital

AIRLINES

Notre Dame University
Green Bay Packers
U. S. Military Academy
Pittsburgh Steelers
University of Michigan
*Brooklyn Dodgers
University of Wisconsin
*New York Giants
University of Maryland
*Boston Red Sox
U. S. Naval Academy
*Cleveland Indians
University of Iowa
Detroit Redwings Hockey Club
Virginia Military Institute
*Cincinnati Redlegs
University of Tennessee
Los Angeles Rams
University of Minnesota
*Philadelphia Phillies
University of Pennsylvania

Ohio State University
Chicago Bears
University of North Carolina
*Pittsburgh Pirates
Clemson College
*Milwaukee Braves
University of Kentucky
Baltimore Colts
University of Alabama
Philadelphia Eagles
Vanderbilt University
Cleveland Browns
Duke University
*Philadelphia Athletics
Detroit Lions
University of Illinois
Washington Redskins
Georgetown University
*Detroit Tigers

Purdue University
University of South Carolina
Quantico Marines
Tulane University
Wake Forest College
Michigan State College
*New York Yankees
Penn State College
UCLA
North Carolina State College
George Washington University
Chicago Cardinals
Louisiana State University
Marquette University
University of Pittsburgh
*Chicago Cubs

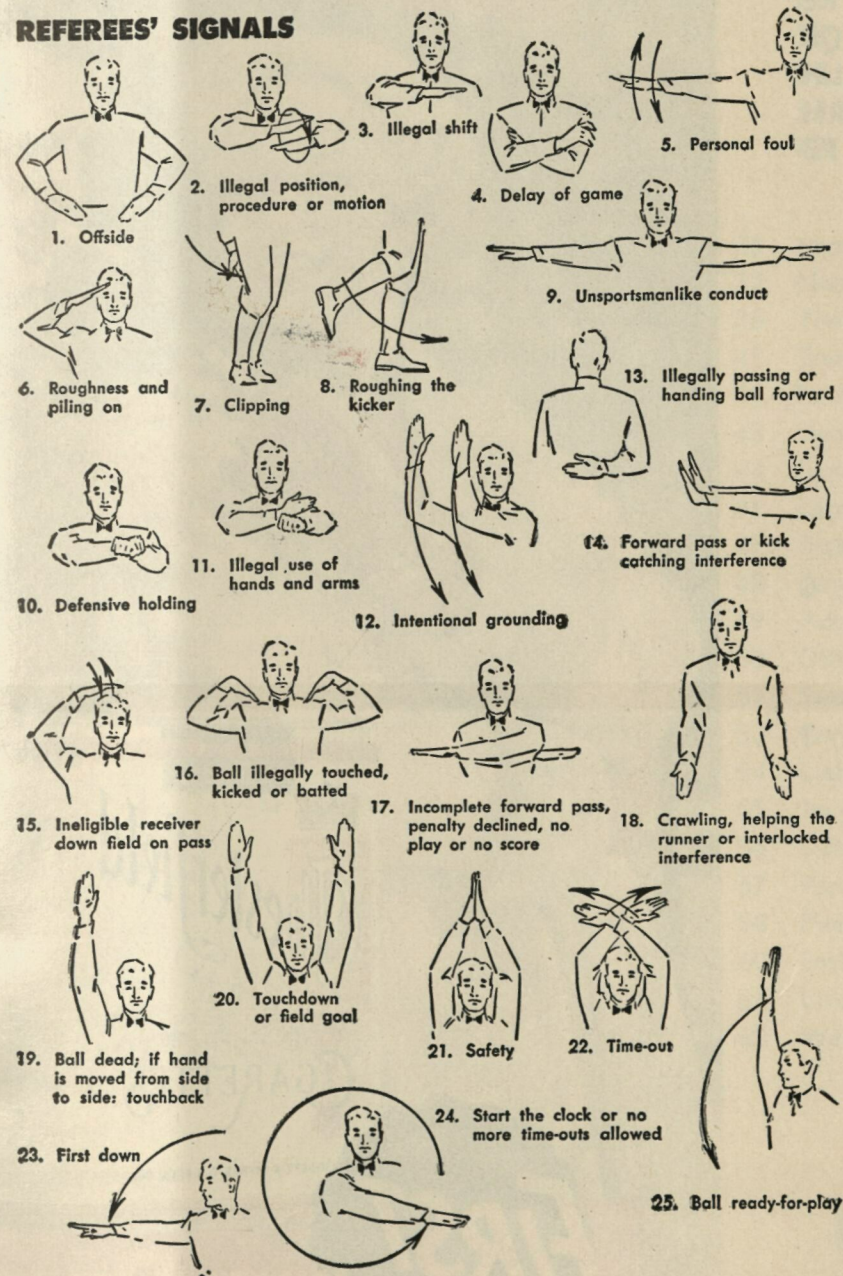
Capital Airlines, with more than 26 years of scheduled airline experience, offers the highest standard of service. For information about Capital's Special Flight Service, write Bill Urquhart, Manager of Group and Convention Sales, Capital Airlines, Washington 1, D. C.

*Major League Baseball Teams

REFRESHING

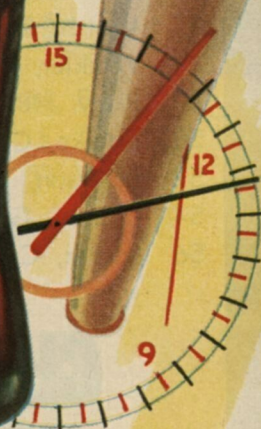


REFEREES' SIGNALS



SEE PENALTIES OPPOSITE PAGE 33

COPYRIGHT 1955, THE COCA-COLA COMPANY



LA SALLE COCA-COLA BOTTLING CO.
424 E. CAPITOL DRIVE, MILWAUKEE 12, WISCONSIN

MARQUETTE

PROBABLE STARTING LINE-UP

No.	Name	Position
85	GEORGE BREHM . . .	LE
84	ED FRANK	LT
64	STAN ANDRIE	LG
50	DEAN MIELKE	C
73	MARV SWENTKOFKSKE .	RG
72	FRANK SCAFFIDI . . .	RT
90	TOM BRAATZ	RE
19	DICK SHOCKEY	QB
21	RON DRZEWIECKI . . .	LH
24	RAY ZAGAR	RH
27	DAVE DONARSKI . . .	FB

THE HILLTOP SQUAD

19	Shockey, QB	60	Zellner, G
20	Janikowski, QB	61	Stengel, G
21	Drzewiecki, HB	63	Snyder, G
22	Spycalla, HB	64	Andrie, G
23	Thomas, E	65	Turner, T
24	Zagar, HB	69	Sobczak, G
25	Connally, HB	70	Kubsch, T
26	Hanley, QB	71	Madden, T
27	Donarski, HB	72	Scaffidi, T
28	Van Bendegon, HB	73	Swentkofske, G
30	Lumber, C	74	Dwyer, G
31	Girman, FB	75	Lewis, T
32	Mixan, HB	78	Pasterski, T
33	Piet, HB	79	Peterson, G., T
34	Zimmerman, FB	81	Raebel, E
35	Ward, HB	84	Frank, T
36	Molenda, HB	85	Brehm, E
37	Varish, E	86	Katula, E
39	Winkler, FB	87	Sims, E
40	Rudy, HB	88	Kuesel, E
50	Mielke, C	90	Braatz, E
52	Peterson, T., C	91	Gral, E
54	O'Shea, G	92	Brandt, G
56	Jarosz, C		

CHESTERFIELD
BEST FOR YOU

Choice of Young America
CHESTERFIELD



FIRST WITH **PREMIUM QUALITY**

COLLEGE of the PACIFIC

PROBABLE STARTING LINE-UP

No.	Name	Position
64	CECIL HARP	LE
70	GENE CRONIN	LT
67	BEN CAHILL	LG
71	GENE ULM	C
77	LOWELL HERBERT . . .	RG
72	CHAS. WASHINGTON . .	RT
76	KEN BUCK	RE
50	ROY OTTOSON	QB
54	ART LIEBSCHER	LH
53	JIM CONOVER	RH
47	WILLIE RICHARDSON . .	FB

THE TIGER SQUAD

26	Myers, FB	63	Williams, G
32	Nunn, HB	64	Harp, E
33	Tivio, QB	65	Maron, T
41	Tompkins, HB	66	Blackwill, T
42	Fallon, HB	67	Cahill, G
43	Swanson, FB	68	Timms, C
44	Flock, HB	69	Griffith, E
46	Leonard, FB	70	Cronin, T
47	Richardson, FB	71	Ulm, C
48	Cornell, HB	72	Washington, T
49	Adair, HB	73	Hulsey, G
50	Ottoson, QB	74	Downing, G
52	Swanson, G	75	Ellison, FB
53	Conover, HB	76	Buck, E
54	Liebscher, HB	77	Herbert, G
55	Jacobs, QB	78	Hoppe, E
56	Dattola, HB	79	Wildermuth, C
57	Perry, HB	80	Meeks, E
58	Fleming, G	81	Doshier, T
60	Smith, C	82	Williams, E
61	Linn, E	83	Frank, E
62	Wellman, E	84	Lally, T

CHESTERFIELD
BEST FOR YOU



DELICIOUS



PENALTIES

LOSS OF FIVE YARDS

1. Taking more than five times out during either half (except for replacement of injured player).
2. Illegal delay of game.
3. Failure to complete substitution before play starts.
4. Violation of kickoff formation.
5. Player out of bounds when scrimmage begins.
6. Putting ball in play before Referee signals "Ready-for-play".
7. Failure to maintain proper alignment of offensive team when ball is snapped. Also,
8. Offside by either team or encroachment on neutral zone.
9. Attempt to draw opponents offside.
10. Crawling by runner.
11. Illegal forward pass (includes intentional grounding of forward pass). Also loss of down.
12. Taking more than two steps after Fair Catch is made.
13. Player on line receiving snap.
14. Any violation of the scrimmage formation.

LOSS OF FIFTEEN YARDS

15. Team not ready to play at scheduled time.
16. Violation of rules during intermission.
17. Illegal return of suspended player.
18. Interference by member of offensive team with defensive player making pass interception. (Also loss of down.)
19. Interference with opportunity of player of receiving team to catch a kick.
20. Illegal use of hands or arms by offensive player.
21. Tackling or blocking defensive player who has made fair catch.
22. Roughing the kicker.
23. Piling up, hurdling, clipping.
24. Tackling player out of bounds, or running into player obviously out of play.
25. Coaching from sidelines.
26. Failure to stop one full second following shift.
27. Defensive holding.
28. Invalid Signal for Fair Catch.

OTHER PENALTIES

29. Striking an opponent with fist, forearm, elbow or locked hands, kicking or kneeling — Mandatory disqualification of offending player plus loss of fifteen yards.
30. Foul within the one yard line — half the distance to the goal.
31. Interference by defensive team on forward pass — passing team's ball at spot of foul and first down.
32. Forward pass being touched by ineligible receiver beyond
- the line of scrimmage — loss of fifteen yards from spot of preceding down and loss of a down.
33. Illegal touching of kicked ball within opponent's ten yard line — touchback.
34. Flagrant rough play or unsportsmanlike conduct — Mandatory disqualification plus loss of fifteen yards.
35. Eligible pass receiver who goes out of bounds and later touches a forward pass — loss of down.

SEE OFFICIALS SIGNALS OPPOSITE PAGE 32

LA SALLE COCA-COLA BOTTLING CO.
424 E. CAPITOL DRIVE, MILWAUKEE 12, WISCONSIN

Don't Miss the Kick-Off

Don't risk car trouble when you're driving to the game or taking a week-end trip. Let us put your car into A-1 shape for the fall season.

Drive in Today
for PATENTED

**SINCLAIR
ANTI-RUST
GASOLINE**

EVERY YEAR . . . FUEL SYSTEM
RUST

gets 1 car in 4

Stop Rust In Your Car



Quirk & Gates Service
Washing • Greasing • Parking

12th & Wisconsin

BR. 2-9310

The "Signal Number" for Coal Broadway 6-9400

NORTH WESTERN-HANNA FUEL CO.

2150 North Prospect Avenue

Milwaukee 1, Wis.

GEORGE R. HOWITT AGENCY

Insurance

Preferred Class of Fidelity
& Surety Bonds

General Agent

U.S. Guarantee Co. of New York

611 N. Broadway

MArquette 8-3712

Milwaukee 2, Wisconsin

the Saxony

OPEN DAILY, SUNDAY, HOLIDAYS

Luncheon from 11 A.M.

Dinner from 4:30 P.M.

Sundays from Noon

*it's smart to be seen —
at the Saxony*

Party Room Available for
Weddings, Dinners and Receptions

FLagstone 4-9900

8825 N. Lake Drive

DUCKLER MOTOR SALES

PONTIAC

Free Pick-up and Delivery

SALES --- SERVICE --- PARTS

Complete Body Repair Shop

1309 S. 70th St.

GRenfield 6-7000

TIGER ROSTER

No.	Name	Hometown	Pos.	Wt.	Ht.	Age	Yr.
26	Ebbie Myers*	Turlock	F	178	5-11	21	4
32	Ronnie Nunn	Brentwood	H	180	6-0	20	3
33	Dave Tivio	San Francisco	Q	180	5-10	20	3
41	Dewey Tompkins	Long Beach	H	170	5-9	21	3
42	Tom Fallon*	Folsom	H	165	5-9	20	3
43	Lynn Swanson	Delhi	F	170	5-10	18	2
44	Phil Flock*	San Andreas	H	167	5-8	21	4
46	Joe Leonard	Pasadena	F	195	5-10	23	4
47	Willie Richardson*	Upland	F	173	5-10	20	4
48	Don Cornell	Inglewood	H	170	5-11	19	2
49	Milt Adair*	Lakeport	H	172	5-11	20	3
50	Roy Ottoson*	Paso Robles	Q	170	6-1	21	4
52	Stan Swanson	Inglewood	G	180	5-9	19	2
53	Jim Conover	Modesto	H	173	6-0	20	4
54	Art Liebscher*	Santa Rosa	H	177	5-11	21	4
55	Bill Jacobs	Redding	Q	160	5-9	19	2
56	Al Dattola*	Temple City	H	170	5-10	21	4
57	Tom Perry	Oakdale	H	185	6-1	19	2
58	Jim Fleming	Richmond	G	192	5-11	20	3
60	Jerry Smith*	Pasadena	C	180	5-10	20	4
61	Roger Linn	Ukiah	E	180	6-0	19	2
62	Gene Wellman*	Hayward	E	185	5-11	22	4
63	Buzz Williams	Walnut Creek	G	195	6-0	19	2
64	Cecil Harp*	Hollister	E	191	6-0	20	4
65	Bob Maron	Los Angeles	T	205	6-0	21	2
66	Duane Blackwill*	Tulare	T	205	6-1	20	4
67	Ben Cahill	So. San Francisco	G	190	5-9	19	2
68	Jim Timms*	Lomita	C	203	5-11	20	3
69	Ed Griffith*	San Jose	E	198	6-2	20	3
70	Gene Cronin	Sacramento	T	205	6-1	19	2
71	Gene Ulm	Sacramento	C	201	6-2	19	2
72	Charles Washington*	Houston	T	212	6-1	21	4
73	Neven Hulsey	Santa Monica	G	200	6-0	20	2
74	Bing Downing	Burlingame	G	200	6-0	20	3
75	Gil Ellison*	Brentwood	F	182	5-10	20	3
76	Ken Buck*	Paso Robles	E	190	6-4	21	4
77	Lowell Herbert**†	Valley Springs	G	201	5-11	20	4
78	Bill Hoppe*	Lodi	E	200	6-2	21	4
79	Byron Wildermuth	Palo Alto	C	195	6-0	19	2
80	Jack Meeks	Costa Mesa	E	210	6-4	19	3
81	Dub Doshier*	Pasadena	T	200	6-0	21	4
82	A. D. Williams	Santa Monica	E	195	6-2	20	2
83	Lee Frank	Oroville	E	200	6-4	19	2
84	Buzz Lally	Stockton	T	205	6-1	20	2

*—Denotes Varsity Letters Won

†—Denotes Captain

"The Official Watch for Timing This Game Is Longines — The World's Most Honored Watch."

RADIO PARTS CO., Inc.

EQUIPMENT
ELECTRONIC

538 W. State Street
Milwaukee 3

Telephone BRoadway 1-4048

The ROBERT ROM Company

PLUMBING HEATING
STEAM & MILL SUPPLIES

434 N. Third Street
Milwaukee

HOME SAVINGS BANK

A COMMERCIAL BANK

Member Federal Deposit Insurance
Corp.

Member Federal Reserve System

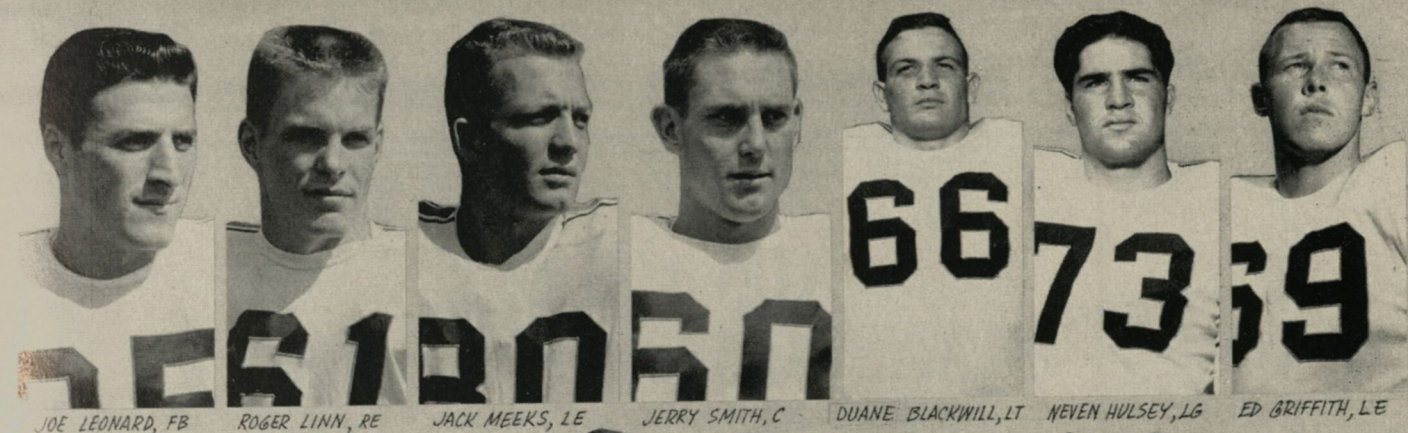
2200 North Third Street
Milwaukee 12

Free Customer Parking

STROH DIE MOULDED CASTING CO.

525 E. MICHIGAN ST.

MILWAUKEE, WIS.



JOE LEONARD, FB

ROGER LINN, RE

JACK MEEKS, LE

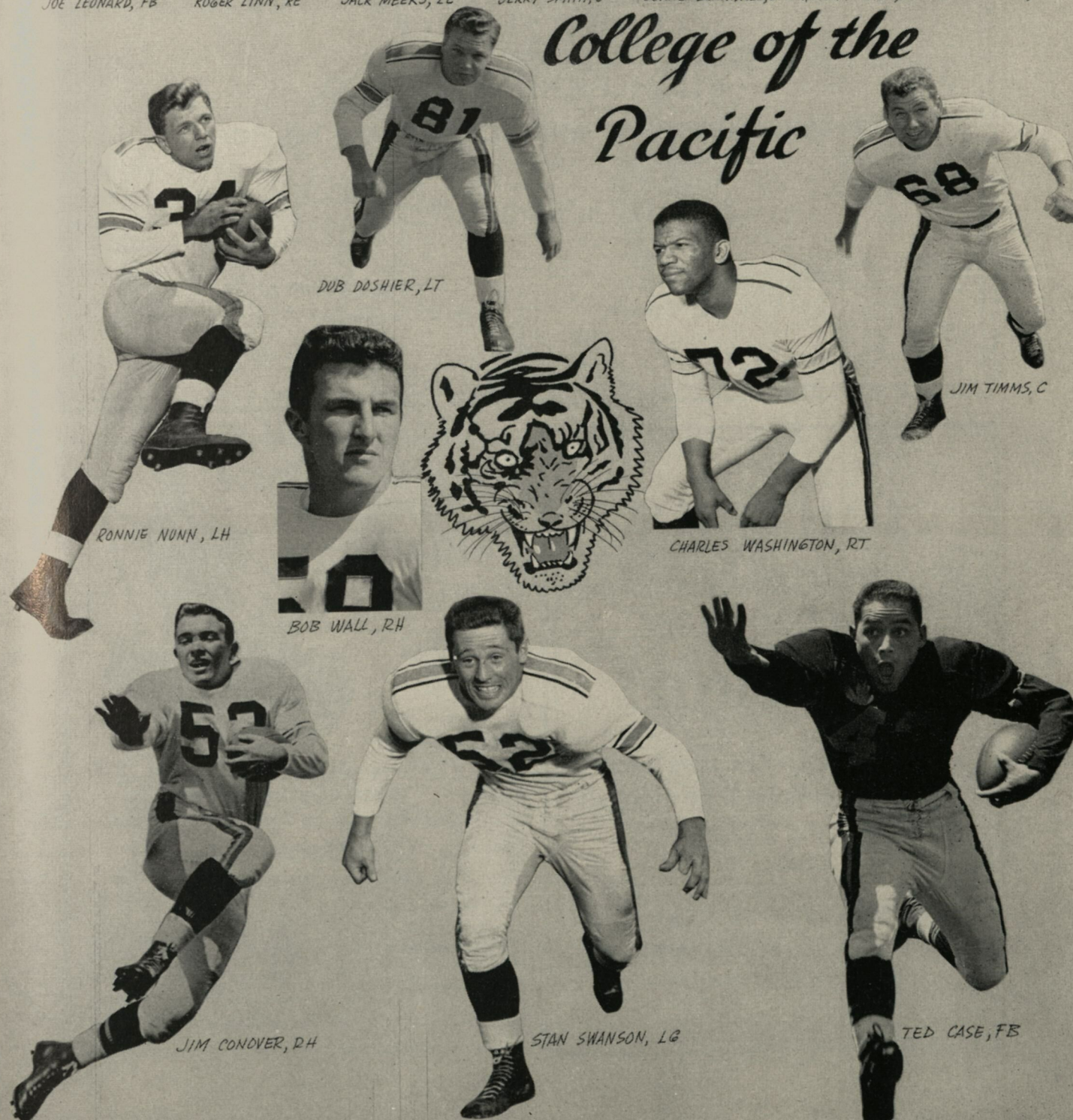
JERRY SMITH, C

DUANE BLACKWILL, LT

NEVEN HULSEY, LG

ED GRIFFITH, LE

*College of the
Pacific*



RONNIE NUNN, LH

DUB DASHIER, LT

BOB WALL, RH

JIM CONOVER, RH

STAN SWANSON, LG

TED CASE, FB

CHARLES WASHINGTON, RT

JIM TIMMS, C

ADVANCE TRANSPORTATION CO.

DAILY SERVICE

MILWAUKEE -- CHICAGO

GENERAL FREIGHT AND REFRIGERATOR SERVICE

Humboldt 3-6727

Milwaukee Office:
2115 S. 1st Street

Chicago Office:
4100 S. Union Ave.

JOHNSON AUTOMATIC TEMPERATURE CONTROL

EVERYWHERE -- Colleges, Schools
Hospitals, Factories & Commercial
Buildings . . .

JOHNSON SERVICE COMPANY
MAIN OFFICE & FACTORY: MILWAUKEE, WIS.
Direct Branches in Principal Cities

This is the 1953
31 INCH
WHIRLWIND
GRASS
KING



A Whirlwind model
Grass King has cut the
Marquette gridiron for the past 9 years

R. L. RYERSON COMPANY
5466 North Port Washington Rd.

Milwaukee, Wis.

EDgewood 2-5064

Sales and Service



WILLIE RICHARDSON, FB

CECIL HARP, RE

FRANK MCCOY, RH

BOB MARON, RT

JIM FLEMING, RG

DEWEY TOMPKINS, RH

BILL HOPPE, RE

College of the Pacific



BEN CAHILL, LG

BUZZ LALLY, RT

A.D. WILLIAMS, LE

MILT ADAIR, LH

LEE FRANK, LE

ART LIEBSCHER, LH

BYRON WILDERMUTH, C

ROY OTTOSON, QB

Remember, it Pays to Shop at A&P

Best Wishes Marquette!

ERWIN C. UIHLEIN



Go, Hilltoppers

**Peter J.
Welcenbach**

Bus. Adm. '50
Athletic Board '49-50

King Machine Co.

Designers & Builders

Tools & Special Machinery

General Jobbing

Heavy Work Our Specialty

4530 W. Burnham

Mitchell 5-8030

Badger Auto Body Co.

Truck and Trailer Bodies — Repairing and Painting
Hercules Dump Bodies & Hoists
Load End Gates

Badger Trl. & Equip. Corp.

Distributors of Truck and Trailer Equipment

TRAILER PARTS AND SERVICE

TRUCK REFRIGERATION

VACUUM AND AIR INSTALLATIONS AND SERVICE

We Service Any Make

415 S. Third St.

BRoadway 1-8278

Milwaukee, Wis.

EUGENE'S HOTEL JUNEAU

World Famed Sea Food

STEAKS — FOWL — GAME

At the Sign of the Lobster

Recommended by Duncan Hines

811 E. Wisconsin Ave.

MArquette 8-2292

College of the Pacific Coaching Staff



Jack "Moose" Myers
HEAD FOOTBALL COACH

The 29-year-old Jack "Moose" Myers has been a fine athlete all his life, starring first at Ventura high school, then UCLA, the Philadelphia Eagles, the Rams, and now head coach at the College of the Pacific. Myers was a mainstay of the Eagle professional eleven, which for two years of his three won the professional football championship. The 6 foot 2 inch, 200 pound Myers was a brilliant fullback for the Eagles—especially shiniings as a blocker—winning the team's most valuable player award his final year. After coaching at Pacific a year, he returned to active playing last season with the Rams as fullback and linebacker.

Myers was a booming full back at UCLA, gaining All-American mention in his first year, 1944, and being a mainstay on the Bruin team in 1946, which went through its Pacific Coast Conference season undefeated but fell before Illinois in the Rose Bowl on Jan. 1, 1947. Moose wound up his Bruin career in 1947.

Joining the Rams in 1952, Myers was one of the forces that drove the team into the 1952 Western Division play-offs with Detroit last year.

The man responsible for the formation of the front wall is John "Nick" Nikceovich. "Nick" started life 28 years ago in Long Beach, Calif., attended Wilmington high of Los Angeles, and served in the navy for three years aboard an aircraft carrier.

Entering UCLA in 1946, he played four years as guard on the Bruin football team, being a member of the 1946 Rose Bowl squad, received All-Coast honors in 1947 and 1948, and some All-America mention. Other collegiate athletics saw "Nick" participating on the Rugby squad, and making history in boxing, capturing the Pacific Coast heavyweight championship in 1947. "Nick" was a graduate student coach at UCLA in 1950 under Red Saunders.

He joined the Pacific coaching staff after two seasons as line coach at the University of Idaho.

Charles "Chuck" Melick is the grand daddy of the 1953 Tiger staff, admitting to 36 years. Chuck is a New Yorker and received his preping in New Jersey.

Chuck attended UCLA and received his degree in 1949 after playing center on the Bruin squad for three years. He was also active in baseball, playing on the University team for two years.

The year after graduation saw Chuck teaching and coaching at Menlo Park, California. As head coach of the Menlo Park high school squad in 1951, Melick had an unbeaten season. The next step in his teaching career was the vice-principalship of Belhaven school near Palo Alto. After a year and a half of studies at Stanford University, Chuck joined the Tiger staff last spring.

The name "John Rohde" is a familiar one to the College of the Pacific, as "Big John" returns to his alma mater to polish up the ends.

Rohde had a brilliant football record at the college having played end for the Tigers from 1946 through 1949 during the "LeBaron" era. He was All-Coast in 1949 and finished his college career as a member of the West team in the San Francisco-Shrine game.

Joining the Washington Redskins in 1950, an injury forced him off the squad, and John finished the year as a student coach under Larry Siemering at Pacific, joining him as end coach at Arizona State for spring practice of 1952. While down in that southern state John first became active in cotton farming, and 1953 saw him in still another field, radio and television.

NATIONAL FOOD STORES
 is the place to GO
 for all the famous brands you KNOW

MONARCH
TOOL & DIE CO.

3804 N. Fratney

ED. 2-4210

MID-CITY
SPORTING GOODS CO.

Jack Petesch • Andy Thon

Distributors of

A. G. Spalding & Bros. Athletic Equipment

2039 W. Wells St. Telephone: Division 2-3472

MARQUETTE BOOSTERS

Chas. Abresch Co.

Albert Tool & Die Co.

Auto Acceptance Corp.

Bass Bros., Inc.

Wm. F. Eichfeld & Sons Co.

Empire Fish Co.

Hall Steel Co.

Hoehnen Sign Co.

L & W Tool & Mfg. Co.

Holtz Gears & Sprockets

M & H Tool & Engineering Co.

H. A. Milhaupt Co.

Milwaukee Leather Belting Co.

National Warehouse Corp.

Dexter Witte, Jr.

George Ziegler Co.

C.O.P. End Is Threat to Marquette



Ken Buck

The number one pass receiver in the nation and one of the most outstanding football players in the College of the Pacific history, Ken "Gluefingers" Buck, will be Marquette's biggest threat in today's game with C.O.P.

Buck hails from a small town in central California, Paso Robles, where he was raised on a ranch. At Paso Robles high school the friendship and athletic team of Ottoson and Buck had its beginning.

Buck is remembered in his home town as an athlete, but basketball not football was his forte. Playing two years of football and four years of basketball, Ken graduated in 1948 with a brilliant record in the latter sport.

The next step was attending Taft Junior college along with his friend, Roy "Skip" Otto-son. In his one year at the junior college he lettered and received all-league honors in both basketball and football.

Entering the College of the Pacific as a business major, Buck continued his football career that has carried him to the top. In his first year at Pacific he lettered in both football and basketball and is one of the two returning letter men to this year's Tiger Casaba squad.

Last season Buck snagged 36 aerials for a total of 464 yards, thus setting an all-time Pacific record. Ken adapted himself extremely well to the revived single platoon version of football. Although noted for his pass receiving, Buck turned many an end around into lost yardage when the Tigers were defeated in their 26-21 tilt against Washington State earlier this season. It was in this game that he was chosen "Player of the Week" and anchored his claim to the title of nation's number one pass receiver.

In spare minutes Ken likes to hunt and fish. After graduation he is looking forward to a career in law enforcement.

"The Official Watch for Timing This Game Is Longines — The World's Most Honored Watch."

Good Luck Marquette!

FAZIO'S

Famous for Italian Food
Shrimp, Steaks, Lobsters & Chicken

1601 N. JACKSON ST. BR. 6-9770

Let Your Alumni Serve You

For

COAL : COKE : FUEL OIL
BUILDING MATERIAL

Call

**SCHNEIDER
FUEL & SUPPLY CO.**

MITCHELL 5-5100

"Milwaukee's Warmest Number"

'Get More Guaranteed 1st Quality
AUTO SUPPLIES
For Your Money!'



Complete
Lines of
Guaranteed
TIRES,
MOTORS,
BATTERIES,
SEAT COVERS, AUTO ACCESSORIES, &
REPLACEMENT PARTS

Get All
YOUR
AUTO
NEEDS
on 'E-Z'
TERMS

NO MONEY DOWN
Satisfaction
Guaranteed

MID-WEST TIRE AUTO STORES
MILWAUKEE

- 3321 N. Green Bay
- 7028 W. Greenfield
- 422 E. Lincoln
- 431 N. Water
- 2624 W. Greenfield
- 2332 N. Third
- 805 W. Mitchell
- 3621 W. North

also WAUKESHA and RACINE

YAHR-LANGE, Inc.

Wholesale Druggists

Serving Pharmacy

in Wisconsin

Since 1869

Milwaukee 2, Wis.

Schwab Stamp & Seal Co'

Manufacturers of

RUBBER STAMPS, SEALS, BADGES
BRONZE PLATES, STENCILS,
FRATERNITY AND LODGE
BUTTONS, ETC.

Phone DAly 8-1746

547 N. Water St.

Milwaukee 2, Wis.

Buy These Well Known Products

- Mott's Apple Sauce
- Mott's Apple Cider
- Sunsweet Prunes
- La Choy Chinese Foods
- Deming's Sirloin of Salmon
- Veg-All
- Fuss'n Boots Cat Food
- Mytiffine Puddings
- Starkist Tuna
- Red Cross Macaroni
- Sun Maid Raisins
- Anglo Canned Beef
- Piknik Shoestring Potatoes
- Pabulum
- Freshlike Vegetables
- Carima Tomato Paste
- Vermont Maid Syrup
- Brer Rabbit Molasses
- All
- Lanosheen
- Blue Star Chicken

The College of the Pacific -- California's First College

The College of the Pacific, the first college to be chartered by the state of California, is currently celebrating its 102nd year.

The school was founded during the rush of history making events that established the American destiny of California. In 1848, James Marshall discovered gold; in 1849, the gold rush poured into California; in 1850, California became the 31st state in the Union, and in 1851, California chartered its first college—the College of the Pacific.

Owen and Bannister Halls on the Pacific campus still bear the names of two of the young leaders who reached California by covered wagons and clipper ships in '49 and '50 and founded the small school.

Issac Owen, who rode throughout northern California on horseback during that period of American history, was the chief promoter and financial organizer. Everywhere he rode, Owen planted the idea of a college for California. He subscribed the first \$1,000. During the early years of Pacific, gold dust, which was brought down from the Mother Lode in the saddlebag of Issac Owen, helped to bolster its slender finances.

Edward Bannister was the first president of Pacific. Before the college was chartered, he opened a preparatory school in a San Jose hotel building known as the "What Cheer House." Then on July 10, 1851, the Supreme court of California issued the charter for Pacific and Bannister opened the doors of Pacific's first campus in the town of Santa Clara.

Until 1871, when the college moved to a new campus at San Jose, Pacific was really two institutions—one called the Male Department and the other, the Female Institution. East and west, Pacific was one of the earliest pioneers of co-education in America.

Prophetically perhaps, the land purchased for the new San Jose campus was the "Stockton Rancho." There Pacific enjoyed the "golden age"

of its 19th century history, and remained 53 years until 1924.

In 1919 Dr. Tully C. Knoles, who was then chairman of the department of history at the University of Southern California, became the president of Pacific. It was he who conceived and directed the great re-location program which brought Pacific to Stockton in 1924, where it has remained ever since. There, at Stockton, Pacific developed far beyond its greatest 19th century years. Before 1940, Dr. Knoles had conferred more degrees than all of the Pacific presidents who preceded him.

In 1946 Dr. Knoles became Pacific's first chancellor. He was succeeded in the presidency by Dr. Robert E. Burns, who has continued the rapid expansion of the Pacific program.

In its second century of service, Pacific remains the only accredited, co-educational, church-related college of liberal arts in all California north of the Tehachapi.

In 1916 when Pacific, along with California and Stanford, was playing rugby football, the Tigers produced an All-American — Dick Wright was named the nation's best rugby fullback and represented the United States in the All-American-All-British rugby game.

Pacific's first undefeated football team was under Coach Erwin "Sede" Righter in 1923. Amos Alonzo Stagg missed by a whisker in 1943 when his tremendous "V-12" Tigers swept into "sixth in the nation" in the Associated Press poll, and produced an All-American in Tackle Art McCaffray. Earlier Stagg had lead his team to the celebrated 6-0 upset of the potent California team in 1939 and other exploits which made his Tigers known as the "giant killers."

It was this coach who during his 14-year western career first projected Pacific into the national gridiron scene and helped to bring the once very small school to a present enrollment of 1,096.

STEINMAN LUMBER CO.

LUMBER - ROOFING - PAINTS - PLYWOOD - INSULATION, ETC.

West Yard
1235 N. 35th Street
Division 2-0740

North Yard
3500 N. Holton Street
WOodruff 2-4331

KEY BILL POSTING CO.

Chas. H. Key

161 W. Wisconsin Ave.

DAlY 8-8484

NORTHWESTERN LAUNDRY

A Clean, Sanitary Laundry
Specializing in Family Finished

BACHELOR BUNDLES — DAMP WASH — CURTAINS
DRY CLEANING

2401 W. North Ave.

DIVision 2-3735

FRED USINGER, Inc.

1030 North Third Street
MILWAUKEE, WISCONSIN
BRoadway 6-9100

FOX POINT TOOL & DIE CO.

6980 N. PORT WASHINGTON ROAD
FLagstone 4-8870

Consolidated Savings & Loan Assn.

Chas. McKeown, Pres.

1040 WEST WISCONSIN AVE.

Each Account Insured to \$10,000

by the Federal Savings & Loan Insurance Corp.

LIBERAL DIVIDEND

Paid Twice Yearly

LOANS FOR HOMES

V. K. Boynton

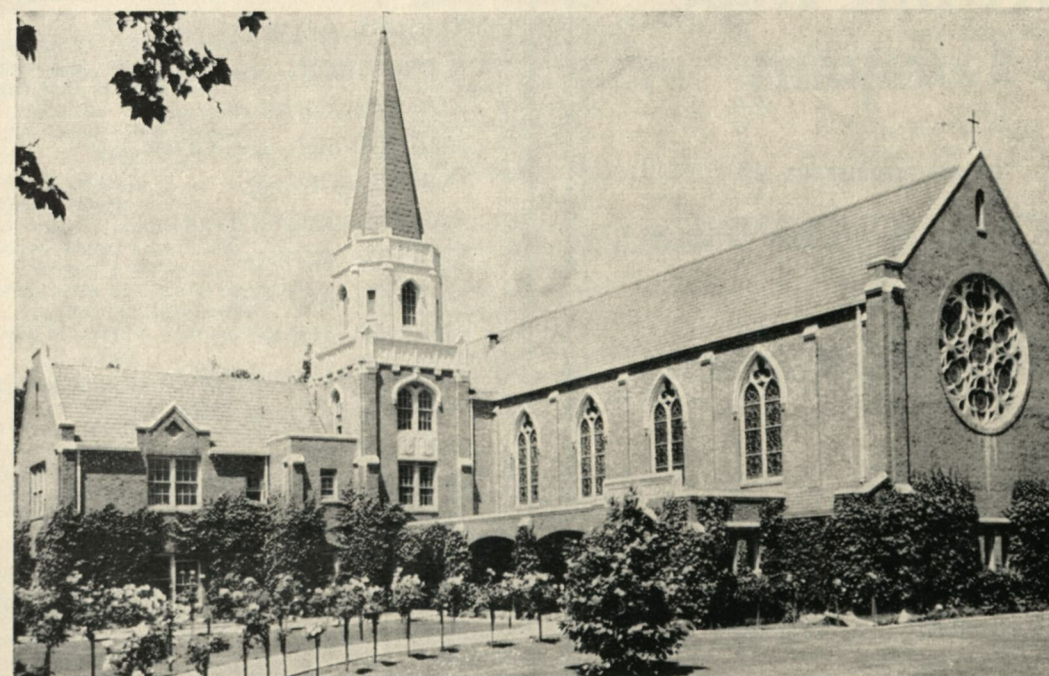
Consulting Engineer

611 N. BROADWAY

MILWAUKEE 2, WIS.



Administration Building



Morris Chapel

The College of the Pacific Campus

PICK MANUFACTURING CO.

West Bend, Wisconsin

Manufacturers of

AUTO PARTS • FARM EQUIPMENT • INDUSTRIAL WATER HEATERS

for *Envelopes*

PHONE BR. 1-2475

MILWAUKEE ENVELOPE MFG. CO.

SERVING MILWAUKEE OVER 50 YEARS

1129 N. SEVENTH STREET

MILWAUKEE, WIS.

Griffith-Hope Company

Manufacturers of

**METAL STAMPINGS
and
PAPER DISPENSERS**

6607 W. Mitchell Street
West Allis 14, Wisconsin

How to Pronounce 'Em

ANDREI—an-DRAY
DRZEWIECKI—drew-ZWICK-ee
GIRMAN—GEAR-men
JANIKOWSKI—jan-i-COW-skee
JAROSZ—ja-ROSE
KATULA—ka-TOOL-a
KUBSCH—CUB-sh
KUESEL—KEE-sell
MIELKE—MILKY
MOLEND—mo-LEND-a
PASTERSKI—pass-TAIR-skee
PIET—PIE-et
SCAFFIDI—sca-FEED-ee
SOBCZAK—SUB-chick
SPYCALLA—spie-CAL-a
SWENTKOFESKE—swent-COUGH-skee
ZAGAR—ZA'-gar

SCORES OF PAST SEASONS

Marq.	1892	Op.	Marq.	1905	Op.	Marq.	Op.	
0	Milwaukee High School	14	0	University of Wisconsin	29	14	Lawrence College	14
0	Milwaukee High School	16	17	Lake Forest University	0	32	Oshkosh Normal	0
10	St. Ignatius College (Chi.)	0	0	Northw. U. (Watertown)	0	34	St. Louis University	0
	1893		6	Beloit College	5	0	St. Thomas College	13
16	Northw. Mut. Life Ins. Co.	0	5	Northw. U. (Evanston)	30		1914	
14	Milwaukee High School	4	0	Lawrence University	6	13	Milwaukee Normal	0
0	Milwaukee Athletics	23		1906		0	Carroll College	16
12	Concordia College	0	0	St. Louis University	30	0	University of Wisconsin	48
	1894		0	Lake Forest University	11	0	Beloit College	13
6	Milwaukee High School		0	Northw. U. (Watertown)	0	0	Ripon College	13
	(East and West combined)	0	0	Ripon College	17	0	Lawrence College	21
32	South Side High School	6	0	Lawrence University	12	6	Creighton University	0
8	St. Ignatius College (Chi.)	11	0	Carroll College	0	7	St. Louis University	14
	1895		8	Milwaukee Medical College	4	0	St. Thomas College	26
18	South Side High School	12		1907			1915	
32	Racine College	6	6	Lake Forest	0	54	Milwaukee Normal	0
18	St. Ignatius College (Chi.)	12	45	Fort Sheridan	0	0	University of Wisconsin	85
6	Carroll College	4	23	Northw. U. (Watertown)	0	7	Ripon College	7
	1896		15	Lawrence University	4	1	Carroll College	0
6	East Side High School	24	23	Ripon College	0	26	Lawrence College	9
0	South Side High School	26	11	Haskell Indians	0	6	Michigan Agricultural Col.	66
6	Carroll College	36		1908		13	Beloit College	0
	1897		45	Oshkosh Normal	0	0	St. Thomas College	0
20	West Side High School	0	6	University of Illinois	6		1916	
0	East Side High School	12	63	St. Viator's College	0	7	Milwaukee Normal	0
	1898		6	University of Wisconsin	9	7	Lawrence College	14
15	Spencerian Business Col.	0	17	Lawrence University	0	6	Carroll College	6
0	St. Joseph's Mil. Acad.	18	45	St. Thomas College	0	6	St. Thomas College	27
0	Sacred Heart College	12	0	University of Notre Dame	6	66	St. Louis University	0
6	Oconomowoc High School	6		1909		13	Beloit College	0
12	Alumni	6	17	Monmouth College	0	55	St. Norbert's College	12
0	South Side High School	18	16	St. John's Mil. Academy	0	7	Wabash College	14
	1900		0	Michigan Agricultural Col.	10		1917	
6	Racine College	6	5	University of Michigan	6	14	Great Lakes Naval Tr. Sta.	7
0	South Side High School	11	0	University of Notre Dame	0	68	St. Norbert's College	0
5	Carroll College	0		1910		46	Beloit College	0
0	St. Ignatius College (Chi.)	11	32	Monmouth College	0	103	Cshkosh Normal	0
	1901		0	Denver University	0	28	Haskell Indians	0
0	Northw. U. (Watertown)	0	15	St. Mary's College (Kansas)	0	47	St. Thomas College	0
10	South Side High School	0	18	Creighton University	3	0	St. Louis University	0
11	East Side High School	0	92	St. John's Mil. Academy	0	21	University of N. Dakota	0
17	St. Ignatius College (Chi.)	0	2	Michigan Agricultural Col.	3	21	Wabash College	0
15	West Bend High School	0	61	Loyola University	0		1918	
	1902		42	Carroll College	0	1	Lawrence College	0
37	Carroll College	0	42	Carroll College	0	13	Ripon College	6
11	Ripon College	0	5	University of Notre Dame	5	0	Carroll College	0
0	Lawrence University	10		1911			1919	
12	Sacred Heart Col. (Chi.)	0	11	Carroll College	5	20	Carroll College	0
65	St. Vincent's College	0	31	William & Vashti College	0	0	University of Wisconsin	13
29	Northwestern (Watertown)	6	11	Wabash College	9	53	Lawrence College	0
6	St. Ignatius College (Chi.)	6	18	DePaul University	0	0	Creighton University	0
53	South Div. H. S. (Chicago)	0	0	Villanova College	0	39	Great Lakes Naval Tr. Sta.	0
	1903		10	South Dakota	0	6	University of N. Dakota	0
34	Chicago Manual Tr. School	0	43	Creighton University	17	13	Wabash College	6
22	Northw. Acad. (Evanston)	0	37	Loyola University	0	31	Carroll College	0
17	Oshkosh Normal	0	0	University of Notre Dame	0	14	University of Detroit	21
0	Lawrence University	6		1912			1920	
11	Whitewater Normal	0	6	Carroll College	0	3	Haskell Indians	6
17	Beloit College	11	20	DePaul University	0	13	Creighton University	0
30	Ripon College	0	0	Creighton University	20	47	Western State Normal	7
	1904		0	Lawrence College	20	23	Ripon College	9
15	Chi. Col. of Phys. & Surg.	0	41	Loyola University	0	49	St. Louis University	14
0	University of Wisconsin	33	6	St. Louis University	20	10	University of N. Dakota	0
28	Milwaukee Medical College	0	0	University of Notre Dame	69	21	Wabash College	7
0	Lawrence University	12		1913			1921	
33	Fort Sheridan	0	12	Milwaukee Normal	0	14	Carroll College	0
11	Whitewater Normal	0	27	Carroll College	3	0	Ripon College	0
6	Oshkosh Normal	0	0	University of Wisconsin	13	55	Campion College	0
			6	Creighton University	13			

QUALITY ATHLETIC EQUIPMENT FOR 72 YEARS

—We Feature Only Nationally Known Athletic Equipment—

Exclusive Distributors for
RAWLINGS ATHLETIC GOODS

"Sports for
All"

SPORTING GOODS
Burghardt
117 E. WELLS ST.
ATHLETIC SUPPLIES

"All for
Sports"

PLANKINTON HOUSE

EVERY ROOM WITH
BATH and RADIO

"Wonderful Beds for Weary Heads"

*Best Wishes
for a Successful Season*

**Norman & Waldemar
Kopmeier**

Buzz Harmeyer's RECREATION

Open Bowling Every Afternoon
All Day Saturdays and Sundays

Expert Instruction
2247 N. 44 Hilltop 2-9905

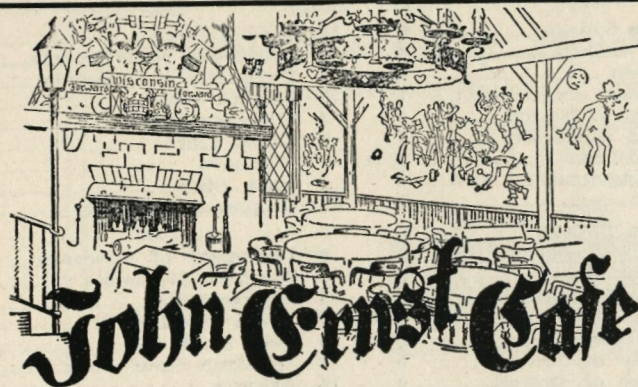
Maynard Electric Steel Casting Co.

Alloy and Carbon Steel Castings

2856 South 27th Street

Milwaukee, Wisconsin

Marq.	Op.	Marq.	Op.	Marq.	Op.
0 Creighton University	3	40 Lawrence College	0	14 Ripon College	0
7 Michigan Agricultural Col.	0	7 Grinnell College	9	0 University of Wisconsin	12
40 Haskell Indians	2	14 Iowa State	6	7 University of S. Dakota	6
7 University of N. Dakota	3	0 Holy Cross	7	0 Kansas State	13
7 University of Notre Dame	21	6 University of Detroit	6	7 Michigan State	21
7 Wabash College	6	6 Creighton University	13	0 Santa Clara	38
1922		20 Boston College	6	7 Villanova	25
52 Campion College	0	25 Kansas Agricultural Col.	6	0 Iowa State	3
0 Ripon College	0	1930		13 Duquesne University	6
26 Carroll College	0	27 Lawrence College	0	1938	
50 Chanute Field	0	6 Grinnell College	0	0 University of Wisconsin	27
23 Creighton University	0	12 Drake University	0	7 Southern Methodist	0
12 Haskell Indians	0	19 Creighton University	7	0 Kansas State	6
6 University of N. Dakota	0	53 Ripon College	0	0 Texas Christian	21
6 University of Detroit	3	6 Boston College	0	0 Iowa State	7
38 South Dakota State College	0	7 University of Iowa	0	14 Michigan State	20
1923		0 University of Detroit	0	12 Arizona	20
32 St. Mary's Col. (Winona)	0	25 Butler University	0	2 Texas Tech	21
31 Ripon College	0	1931		1939	
16 Carroll College	0	39 Lawrence College	0	13 University of Wisconsin	14
7 Boston College	6	40 Ripon	0	0 Kansas State	3
18 University of Detroit	6	0 Detroit	7	17 Michigan State	14
24 University of N. Dakota	0	7 Boston College	0	0 Southern Methodist	16
13 South Dakota State	0	13 Washington & Jefferson	6	13 Arizona	6
20 Vermont	0	13 Mississippi	6	13 Duquesne	21
1924		21 Butler	0	21 Iowa State	2
26 St. Mary's Col. (Winona)	0	7 Creighton	0	22 Texas Tech	19
21 United States Naval Acad.	3	32 Drake	6	1940	
10 John Carroll University	3	1932		19 University of Wisconsin	33
7 Creighton University	21	25 Lawrence College	0	41 Iowa State	25
7 Boston College	34	2 University of Wisconsin	7	27 Creighton	27
26 University of N. Dakota	0	0 Creighton	0	13 Texas Tech	20
61 University of Vermont	7	13 Boston College	0	0 Duquesne	14
1925		7 West Virginia	34	41 Manhattan	45
10 Loyola University	0	0 Detroit	7	7 Michigan State	6
14 St. Mary's Col. (Winona)	0	6 Washington & Jefferson	0	0 Detroit	18
0 United States Naval Acad.	19	45 Drake	0	14 Arizona	17
7 Lombard	0	1933		1941	
28 Creighton University	0	8 Lawrence College	0	28 University of Wisconsin	7
0 Kansas Aggies	2	0 University of Wisconsin	19	7 Michigan State	13
6 So. Dakota State	0	0 Mississippi	7	33 Kansas	7
13 University of N. Dakota	0	0 Michigan State	6	14 Duquesne	31
30 University of Mercer	0	6 University of Detroit	22	6 Mississippi	12
1926		13 West Virginia	13	6 Detroit	7
10 Lawrence College	6	14 Creighton University	9	34 New Mexico	0
2 Grinnell College	17	21 St. Louis University	6	14 Oklahoma	61
28 University of St. Louis	0	1934		28 Iowa State	13
46 St. Mary's Col. (Winona)	0	12 Northwestern University	21	1942	
21 Creighton University	0	0 University of Wisconsin	3	14 Kansas	0
19 Alabama Polytech. Institute	3	27 Kansas State	20	7 University of Wisconsin	35
14 Kansas Agricultural Col.	0	19 Centre College	6	34 Iowa State	12
6 University of N. Dakota	9	6 Temple University	28	28 Michigan State	7
0 Oregon Agricultural Col.	29	7 Michigan State	13	39 Arizona	0
1927		14 St. Louis University	0	10 Detroit	0
29 St. Viator College	0	38 Creighton University	0	27 Manhattan	12
9 Lawrence College	0	6 University of Detroit	13	0 Great Lakes	24
12 United States Military Acad.	21	1935		34 Camp Grant	0
0 Oklahoma A. & M. College	8	33 University of Wisconsin	0	1943	
0 Creighton University	14	14 Kansas State	0	33 University of Wisconsin	7
31 Grinnell College	0	33 Mississippi	7	0 Purdue University	21
26 St. Louis University	0	28 Iowa State	12	7 Camp Grant	7
12 Holy Cross College	6	13 Michigan State	7	26 Lawrence College	0
34 Iowa State College	0	6 Temple University	26	7 Great Lakes	41
1928		26 Creighton University	0	45 University of Denver	6
31 St. Viator College	0	1936		19 Iowa Preflight	46
19 Lawrence College	7	12 University of Wisconsin	6	6 Great Lakes	25
7 Drake University	26	32 St. Louis University	6	1944	
26 Oklahoma A. & M. College	0	13 Kansas State	0	0 University of Michigan	14
6 Holy Cross College	6	13 Michigan State	7	7 Purdue University	40
13 Grinnell College	20	20 St. Mary's (Cal.)	6	2 University of Wisconsin	21
7 University of Kansas	0	7 Creighton University	6	45 Lawrence College	0
6 Iowa State College	0	33 Mississippi	7	12 Lincoln AAB	13
6 Creighton University	9	0 Duquesne University	13	0 Iowa Preflight	26
		6 Tex. Chris. (Cotton Bowl)	16	7 Great Lakes	45
				0 Great Lakes	38



YOUR GOAL "After the Game"

the friendly place to go is our RHINE ROOM where a cozy fireplace and mellow cocktail lend welcome warmth to your evening of pleasure. Here, too, at Milwaukee's oldest restaurant, perfectly prepared German foods are a tradition.

As Seen on Television

"Favored for Old World Flavor"

JOHN ERNST CAFE

Corner Ogden and Jackson

BRoadway 2-5919

Rundle-Spence Mfg. Co.

Manufacturers and Distributors of

Plumbing, Heating & Mill Supplies

445 N. Fourth Street : Milwaukee 3, Wis.

Roemer Drug Co.

606 N. BROADWAY

MILWAUKEE, WIS.

Best Wishes, Marquette for a
Successful Season

J. M. Brennan, Inc.

PLUMBING & HEATING
CONTRACTORS

Division 2-3830

CONCESSION PRICES

Hot Dogs20	Candy10
Coca Cola10	Peanuts10
Soft Drinks . . .10	Popcorn15
Coffee10	Cigars10
Ice Cream10	Cigarettes25

Dependable for Over a Quarter Century

We Feature Only

ATHLETIC EQUIPMENT

Made by Manufacturers with a National Reputation

Distributors for

"McGREGOR - GOLDSMITH"

College Athletic Supply Co.

749-751 N. Plankinton Avenue



Marq.	1945	Op.	Marq.	Op.	Marq.	Op.		
13	Purdue University	14	7	Villanova	27	Detroit	14	
13	University of Wisconsin	40	6	Indiana	48	6	Michigan State	34
0	Villanova College	6	39	Arizona	21	21	Santa Clara	14
55	Kansas State College	13	12	Iowa	14	13	South Carolina	13
27	Great Lakes	37		1948		21	Holy Cross	19
13	Michigan State	13	6	Detroit	34	7	Indiana	18
32	Detroit	14	47	St. Louis	7		1951	
26	Kansas	0	7	Pittsburgh	21	48	South Dakota	6
19	Kentucky	13	0	Kentucky	25	6	Wisconsin	22
40	St. Louis	6	9	Purdue	14	6	Iowa State	6
	1946		0	Michigan State	47	14	Michigan State	20
0	Wisconsin	34	0	Wisconsin	26	21	Tulsa	27
26	St. Louis	0	32	South Dakota	0	27	Miami (Ohio)	7
13	Villanova	26	14	Arizona	24	27	College of Pacific	35
46	Idaho	6		1949		13	Holy Cross	39
6	Pittsburgh	7	66	North Dakota State	0	26	Detroit	13
20	Arizona	0	0	Wisconsin	41	14	Santa Clara	27
21	University of Detroit	20	7	Michigan State	48	21	San Jose State	7
7	Kentucky	35	62	St. Louis	7		1952	
0	Michigan State	20	24	Detroit	14	19	Wisconsin	42
	1947		68	Colorado State	13	21	Boston University	0
33	South Dakota	6	3	South Carolina	6	37	Detroit	27
27	St. Louis	23	7	Purdue	41	37	Arizona	7
41	Detroit	18	20	San Francisco	39	6	Miami (Florida)	20
13	San Francisco	34		1950		0	Holy Cross	7
12	Wisconsin	35	57	North Dakota State	0	21	Miami (Ohio)	22
7	Michigan State	13	6	Wisconsin	28	13	Michigan State	62
			46	Kansas State	6	27	College of Pacific	27

Marquette Songs

Anthem

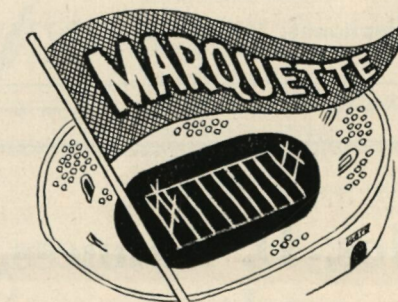
Hail, Alma Mater,
Thy sons do call.
We're here to greet thee,
Dearest friend to all.
We're here to show thee
Our love is strong—
Hail, Alma Mater
Marquette, hear our song!

New Fight Song

Let's go Marquette, we can win every game,
We've got the spirit, we've got the flame,
We've got the stuff that makes for might,
Go Marquette! Go Marquette!

Fight! Fight! Fight!

Down on the field charging on 'til we win,
Hilltoppers we're for you.
Put 'em out! Cheer and shout!
Blue and Gold, there's no doubt,
It's a victory for old M.U.!



Ring Out Ahoya

Ring out Ahoya
With an M. U. Rah Rah,
M. U. Rah Rah,
M. U. Rah Rah Rah Rah,
Ring out Ahoya
With an M. U. Rah Rah
M. U. Rah Rah for old Marquette,
Rah! Rah! Rah!

Roll On, Old Avalanche

Roll on, Old Avalanche, on down the field
Conquer the foe and force them to yield.
Old Marquette will shine tonight.
We want a touchdown, fight! fight! fight!
Onward to glory; onward to fame,
Fight for the Varsity.
Roll on, Old Golden Avalanche,
Roll onward to victory.

Makers of
**QUALITY PRINTING
PLATES**

**NATIONAL
ENGRAVING
COMPANY**

704 South Eleventh St. Milwaukee 4
Telephones: Mltchell 5-7710-7711

**Jos. D. Bonness
Inc.**

General Highway Contractors

1409 N. 27th St., Milwaukee, Wisconsin

**H. F. HAESSLER
HARDWARE CO.**

414 East Mason Street

**The Julien Shade Shop
Inc.**

"A Julien Shade—A Shade Better"

**BADGER BRAND WINDOW SHADES
VENETIAN BLINDS**

Phone MARquette 8-3864-5
829 W. Michigan St. Milwaukee 3, Wisconsin

Frenchy's

1827 E. North Ave.

LUNCHEONS DINNERS

Delicious Steaks, Chops, Seafoods

11:30 A.M. to 1 A.M.

For Reservations Phone BR. 1-1848

Best Wishes from
Walter Schroeder

President
SCHROEDER HOTELS

Marquette Cheers

6. Yea Team:

Yeaaaaaaaaaaaaaaaa—TEAM!
Yeaaaaaaaaaaaaaaaa—TEAM!
Yeaaaaaaaaaaaaaaaa—HILLTOP!
Y E A!

7. Spell Out Marquette

(Progressively Faster)

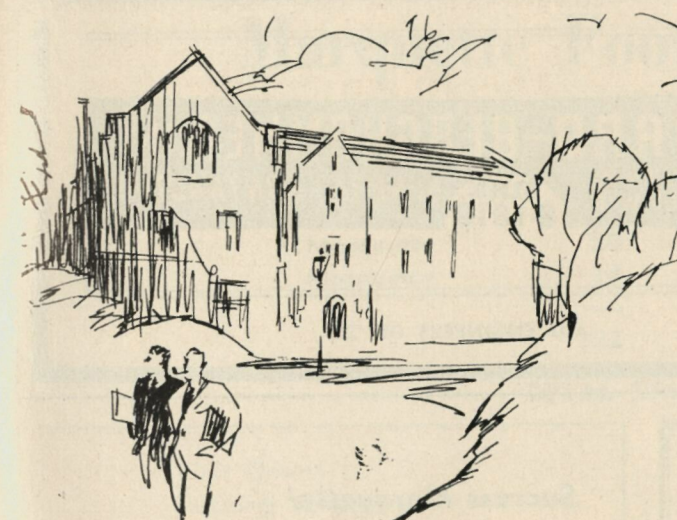
M-A-R-Q-U-E-T-T-E,
M-A-R-Q-U-E-T-T-E,
M-A-R-Q-U-E-T-T-E,
Y E A!

8. Alma Mater Song:

Hail, Alma Mater,
Thy sons do call.
We're here to greet thee
Dearest friend to all.
We're here to show thee
Our love is strong—
Hail, Alma Mater,
MARQUETTE, hear our song!

9. Chant:

M—A—R-r-r-r-r
Q—U—E-ee-ee-ee
T—T—E-ee-ee-ee
FIGHT! FIGHT! FIGHT!



1. Locomotive:

M—U—Rah—Rah—MAR—QUETTE
M-U-Rah-Rah MAR-QUETTE
M U Rah Rah MARQUETTE
Y E A!

2. Skyrocket

ssssssssssss—BOOM!
(Whistle)
A a-h-h-h-h-h h

3. Thunder Clap:

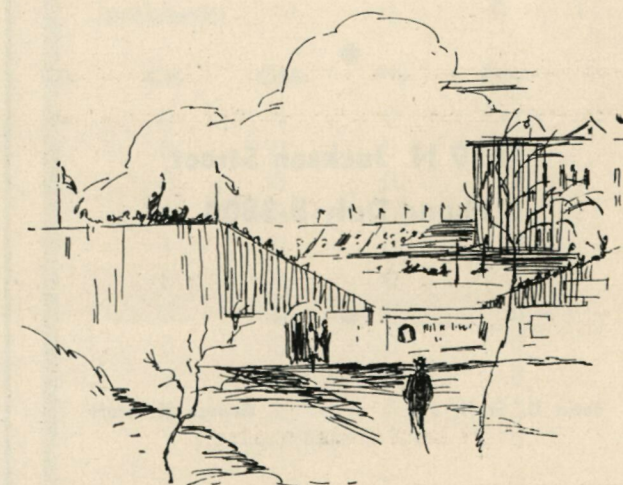
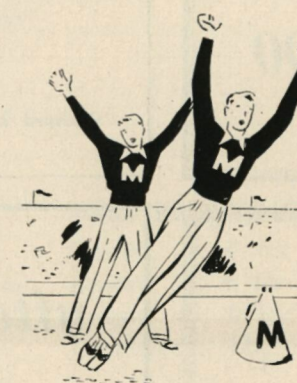
(Clap in unison)—MARQUETTE!
(Clap in unison)—MARQUETTE!
(Clap in unison)—MARQUETTE!

4. Yea Blue, Yea Gold

Yea a-a-aaaaa—Blue!
Yea-a-a-aaaa—Gold!
Yea-a-a-aaaa—Team!
LET'S GO!

5. Hilltop Yell:

(Spell)
H-I, H-I,
H-I-L-L,
T-O, T-O, T-O-P,
H-I-L-L-T-O-P,
Hilltops! Hilltops!
Y E A!



Greetings

To the

HILLTOPPERS

GEBHARD-BERGHAMMER INC.
 5420 W. STATE ST.
 MILWAUKEE, WIS. **BLMD. 8-1818** **GENERAL CONTRACTORS**

MU ENGINEERS OF '23

YELLOW CAB CO.

Call

BRoadway 1-1800

Success Marquette!

Piszczyk's
Pharmacy

Joseph P. Piszczyk, R.Ph.

South 13th and W. Oklahoma

Orchard 2-0214

Milwaukee 7, Wis.

STAFF
ELECTRIC CO.

CONTRACTORS

1659 N. Jackson Street

Phone Daly 8-3800

John C. Staff, Jr.

George K. Staff

after the game

STOP at the

Ambassador Hotel

Headquarters for all Athletic Activities
Collegiate and Professional

"Most Convenient to Marquette Stadium"

Marquette Football Statistics

RESULTS

Marquette	46	South Dakota State	13
Marquette	31	Cincinnati	7
Marquette	11	Wisconsin	13
Marquette	20	Indiana	21
Marquette	14	Arizona	0
	122		54

TOTAL STATISTICS

	Marquette	Opponents
First Downs	73	58
Rushing Yardage	1245	751
Passing Yardage	350	220
Total Net Yardage	1595	971
Passes Attempted	58	61
Passes Completed	30	26
Passes (had) Intercepted	5	6
Number of Punts	15	29
Punting Average	30.4	34.4
Fumbles Lost	8	8
Yards Penalized	293	183

RUSHING YARDAGE

Donarski, fb, 46 for 284, 6.2 av.
 Drzewiecki, hb, 38 for 232, 6.1 av.
 Girman, fb, 28 for 201, 7.2 av.
 Shockey, qb, 55 for 199, 3.5 av.
 Spycalla, hb, 10 for 157, 15.7 av.
 Hanley, qb, 29 for 62, 2.1 av.
 Zagar, hb, 20 for 62, 3.1 av.
 Molenda, hb, 11 for 37, 3.3 av.
 Janikowski, qb, 2 for 6, 3.0 av.
 Connally, hb, 2 for 5, 2.5 av.

PASS RECEIVING

Braatz, re, 8 for 79 yds. Sims, re, 3 for 33 yds.
 Brehm, le, 6 for 65 yds. Thomas, re, 2 for 11 yds.
 Zagar, hb, 4 for 79 yds. Molenda, hb, 1 for 8 yds.
 Drzewiecki, hb, 6 for 75 yds.

FORWARD PASSING

	A	C	Yds.	Int.	TD
Shockey	51	27	339	3	2
Hanley	6	2	10	1	0
Janikowski	1	0	0	1	0

SCORING

	TD	CA	CM	FG	Pts.
Ron Drzewiecki, hb	4	0	0	0	24
Dave Donarski, fb	3	0	0	0	18
Jim Hanley, qb	3	0	0	0	18
Lou Spycalla, hb	3	0	0	0	18
Bob Girman, fb	2	1	0	0	12
Dick Shockey, qb	1	0	0	0	6
Fred Connally, hb	1	0	0	0	6
Ray Zagar, hb	1	0	0	0	6
Frank Scaffidi, t	0	9	8	0	8
Don Molenda, hb	0	8	2	0	2
			2 safeties		4
	18	18	10	0	122

Milwaukee Chaplet & Supply Corp.

1023 South 40th Street

Milwaukee 15, Wisconsin

Distributors of
FOUNDRY SUPPLIES

HOTEL ANTLERS

BR. 1-5634

618 No. 2nd St.

BANQUET ROOMS AVAILABLE

CATERING SERVICE

COCKTAIL LOUNGES

BALLROOM RENTALS

(Available for School Dances and Proms)

BOWLING ALLEYS

BILLIARD ROOM

Best Wishes from

MILWAUKEE SHOE CO.

215 W. Maple St.

Milwaukee 4, Wis.

PRICE ERECTING CO.

Steel Erectors - Machinery Movers - Riggers

3402 W. Pierce Street

Milwaukee 4, Wisconsin

Rival Detroit Team Is Next To Invade MU Stadium

by Jim Sankovitz

The Titans of the University of Detroit will be the next to invade Marquette Stadium, Saturday afternoon, Nov. 7, when they come in search of their ninth win over the Hilltoppers in the 21 meetings. Not since 1948 have Coach Dutch Clark's warriors been able to bring home the bacon.

The Marquette-Detroit rivalry of 20 games extends back to 1920 when U. of D. defeated the Hilltoppers, 21-14. Since that time, U. of D. has won only seven games. Two games have resulted in ties.

Despite the loss of Quarterback Ted Marchibroda, who directed the Titan "T" formation last year, Detroit looks forward to their best season in three years. One reason for the optimism is the switch back to the one platoon system. According to Coach Clark, Detroit will experience depth at most positions—one factor that has hurt them in past seasons.

The Jesuit taught students from the Motor City were just a bit disappointed with the gridiron squad of last year, which racked up a three won and six lost record. However, there were moments of gladness experienced on the 64 acre campus of Detroit last year. U. of D. opened the 1952 season with a 22-7 win over Wichita. Midway through the season, the Titans notched a 57-0 romp over Drake and later added a 28-20 victory over Fordham.

On October 11th, the Hilltoppers journeyed to Detroit and defeated the Titans, 37-27.

Detroit was hurt by the graduation of six key members of last year's squad. One of the nation's best quarterbacks last year presided over the gridiron Titans, in the person of Teddy Marchibroda. However, several sparkling candidates for the field general position have given Backfield Coach Wally Fromhart pleasant moments. Competition for the position is strong, with veteran Dave Kline having an outside post for the starting berth. Leading the backfield contingent is Halfback Lee Riley. Riley

fits into the two way program very well, as he saw 381 minutes of action in nine games last year. Ray Zambiasi returns to the fullback slot that he filled last year. In 1952, Zambiasi led the Titans in scoring and ground gaining.

The expectations for the Detroit line appear to be the brightest of the team. The entire front line returns this year. This forward wall is anchored by Tackle Cas Krol, a 6 foot 3 inch, 235 pound demon. Krol was among candidates for national honors as a junior last year. Guarding the other tackle position from invasion is Co-Captain Dick Martwick, a 220 pounder. Denny McCotter, who shares the captaincy with Martwick, has been switched to a guard position this year, after holding the post as general handy man last year in playing quarterback, fullback and a linebacker.

The end positions, always strong points in Detroit's line-up, are no exceptions to the rule this year. Veteran John Eckenstein appears to be the number one choice for the flanker spot. However, newcomers Jack Flanagan and Steve Gomola are giving vets Dick Abel and Al Galuardi competition for the starting berth. Marion Balcerzak is holding down the center position presently.

Coach Earl H. (Dutch) Clark, named as the Missouri Valley conference "Coach of the Year" in 1952, is moving into his third season as the head coach of the Titan machine. Selected as an All-American quarterback for Colorado college in 1928, Clark entered professional football with the Detroit Lions in 1934. He came to Detroit in 1950 as backfield coach for the Titans. In February, 1951, Clark accepted the dual role of athletic director and head football coach.

Dutch is assisted by Wallace L. (Wally) Fromhart, backfield coach, who starred as All-American quarterback under Elmer Layden at Notre Dame in 1933.

GOOD LUCK HILLTOPPERS
and
BEST WISHES FOR A SUCCESSFUL SEASON

CURTIS DEVELOPMENT & MFG. CO.

3266 N. 33rd St.

MILWAUKEE 16, WIS.

Manufacturers of Electrical and Mechanical Controls

*"The Best
What Gives"*



FINE BEVERAGES

**MOTOR
CASTINGS
COMPANY**

MILWAUKEE

GAEDKE-MILLER AGENCY

Nothing but **INSURANCE** since 1911

O. H. Gaedke

A. L. Fischer

611 N. Broadway

Broadway 6-2526

Parents to be Honored At Detroit Game --- Nov. 7

Mothers and fathers of Marquette students will be honored at the Parents' Day celebration and game on Saturday, Nov. 8. Parents will be able to visit University buildings, meet faculty members and view demonstrations of certain colleges, as well as cheer the Hilltoppers on to victory against Detroit.

Open houses in the various colleges of the University are set for the morning between 9 and 11 a.m., according to Philip Zlatnik, Parents' Day chairman and Medical school senior. Zlatnik is being assisted in ticket sales and open house plans by a committee of men and women from all colleges on the campus.

M.U.'s "parents of the day" will be honored at half-time ceremonies at the Hilltop stadium. Half-time festivities will also include a salute to Co-Captain Ed Frank by the Cedarburg, Wis., band. The band will accompany a group of Hilltop supporters from Frank's home town of Cedarburg.

Parents' Day is an outgrowth of last year's Dads' Day which re-inaugurated a Hilltop tradition dropped during the war years. Last year approximately 1,000 of the special exchange tickets for the football game were sold.

The ticket plan this year will again be handled with purchase of exchange tickets at \$3 each. Exchange tickets may be bought from representatives in the various schools. They then may be exchanges also may be made at the Athletic office. Students who wish to sit in the reserved section with their parents will also present their athletic coupon books at the Athletic office. Special arrangements for reserving blocks of seats for organizations may be made at the Athletic office also.

Competition in ticket sales will again be among Hilltop fraternities, sororities and schools on a per capita sale basis. The per capita competition insures smaller organizations of an equal chance at ticket sale plaques with large organizations. The plaques for last year's Dads' Day competition will be awarded at half-time ceremonies of the Marquette-Detroit Parents' Day tilt.

Ticket chairman for the 1953 Parents' Day is John Mountain, Engineering senior. General chair-

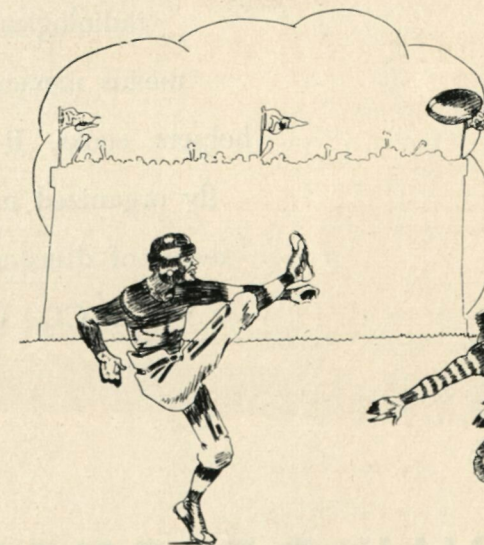
man for open houses and demonstrations will be Patrick Roach, a junior in Law school.

Freshmen who signed up for Parents' Day committee work will assist committee members in escorting parents on tours of new University buildings and demonstrations in various schools. Working demonstrations of school activities are set for the College of Journalism, School of Engineering, Medical school, College of Nursing and certain departments in the College of Liberal Arts, as well as the School of Speech.

Medical Technologists will set up their demonstrations in the Medical school, so it will be accessible to campus visitors.

Dads' Day last year was an attempt to bring parents of the students to the University so that they could meet the faculty administrators and student's friends. Union and Coed Boards' presidents, Joan Mathie, Liberal Arts '52, and Gene Wagner, Dentistry '52, were instrumental in last year's revival of the former University tradition.

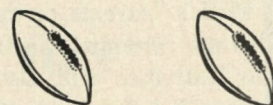
At the end of last year's program, the Union and Coed Boards delegated the project to a special Parents' Day committee, of representatives of the various schools and colleges. Working with University promotion administrators, the committee adopted the 1953 Parents' Day agenda.



"The Official Watch for Timing This Game Is Longines — The World's Most Honored Watch."

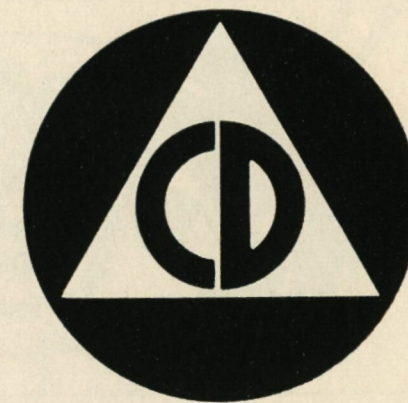


Carry the ball . . .



Hilltoppers! Civil defense is everyone's job. It means people trained in first aid, fire-fighting, rescue work. It means a warden in every block to serve as "safety adviser." It means blood donors, litter bearers, auxiliary police, radiological teams, nurses, doctors, and aides. It means messengers, truck drivers, engineers, canteen helpers, cooks. It means thousands of citizens voluntarily organized into a huge team, ready to offer aid in event of disaster. Find out where you can best serve in CD. Contact your Milwaukee Civil Defense and Disaster office today!

CIVIL DEFENSE IS TEAMWORK—



for Civil Defense!



Civil Defense Appeal Sponsored by

BIERSACH & NIEDERMEYER CO.

Mfrs. of Air Raid Sirens, Milwaukee

FRUEHAUF TRAILER CO.

HUEBSCH MFG. CO.

KIECKHEFER BOX & LUMBER CO.

KVAM MOTOR CO.

MANEGOLD STONE CO.

STERLING TOOL & MFG. CO.

WAGNER IRON WORKS

WESTERN METAL SPECIALTY CO.

WESTMORE-REAMER CO.

THERE'S A PLACE FOR YOU



Whether at HOME
or OUT-OF-TOWN

*See Your Favorite
Football Team*

in OUTSTANDING Newsreel Shots at
the following Fox Wisconsin Theatres:

**WISCONSIN : PALACE
STRAND**

Today's Guests

The following men were members of the 1928-1929 athletic teams. To celebrate their 25th reunion they have been invited as honored guests for this afternoon's Homecoming game with the College of the Pacific.

Andrews, Walter "Red"	Hyde, William F.	O'Donnell, James M.
Andrews, Roy F.	Jeffery, Gordon	Padden, John
Buck, Roy	Johnson, Edwin	Poster, James
Bugge, Lawrence	Johnson, Stanley	Quasney, Dr. Jay
Bultman, Arthur	Kampine, Dr. Clifford	Radick, Kenneth
Campion, Frances (deceased)	King, Joseph B.	Reichert, Harold E.
Carney, John	Kirkham, Warren	Rohan, Emmet
Casper, William	La Blonde, Robert	Ruehl, Elroy
Collins, Dr. John	La Casse, Edmund	Schultz, Roland J.
Corbett, Gilbert	Larson, Melvin	Schultz, Dr. Wm.
Crowley, Robert	Linscott, Francis	Schutte, Dr. Edwin H.
De Courcey, Donald (deceased)	McDonald, Clifford	Smith, Russell J.
Deig, Francis J.	McElligott, Frank	Thelan, Harry
Dunphy, Ward	McFadyen, Donald	Tribovii, Theo.
Gebert, Dr. Walter H.	MacKenzie, Clarence	Treps, Michael J.
Gibout, George F.	Mendelson, Fredric	Walish, Eugene J.
Gitter, Leonard	Metzler, Ed. J.	Waschick, Dr. Walter R.
Gonyo, Neil	Moody, Richard (deceased)	Young, Cosmos
Honkamp, Richard C.	Morgan, Saxton	Zimmerman, Francis
Horrigan, Paul	Murphy, Phillip	
Houghton, Dr. John	Nowak, Stanley	

"Top Spot"

IN SPORTS



• **Marquette University**
Varsity Football

• **Green Bay Packers**
'Pro' Football, with WEMP's Earl Gillespie
feeding 35 stations in four states

• **Milwaukee Braves**
Big League Baseball

• **Wisconsin University**
Varsity Basketball

• **Milwaukee Hawks**
'Pro' Basketball

Milwaukee - Tops in the nation — WEMP - Tops in Milwaukee

People everywhere are calling Milwaukee America's "hottest" sports town. And in Milwaukee, people call WEMP the "Sports Station."

Milwaukee listeners know that if it's a **major** sport, it'll be on WEMP play-by-play with the inimitable Earl Gillespie, WEMP Sports Director, at the mike.

Now it's another season of Marquette University football with Earl Gillespie and Dave Martin at the play-by-play mike. Hear all the games both at home and away brought to you by the Allis-Chalmers Manufacturing Co. on Milwaukee's top sports station, WEMP.

**COMPLETE COVERAGE—ALL
MAJOR MILWAUKEE AND
WISCONSIN SPORTS . . .**

WEMP

**AM-FM 24 HRS. • MUSIC • NEWS • SPORTS
1340 K. C. • MILWAUKEE**

CAMEL

America's most popular cigarette!



*So Mild-
So Flavorful!*