



10-1-1932

Pacific Review October 1932 (Homecoming Issue)

Pacific Alumni Association

Follow this and additional works at: <https://scholarlycommons.pacific.edu/pacific-review>



Part of the [Higher Education Commons](#)

Recommended Citation

Pacific Alumni Association, "Pacific Review October 1932 (Homecoming Issue)" (1932). *Pacific Magazine and Pacific Review*. 62.

<https://scholarlycommons.pacific.edu/pacific-review/62>

This Newsletter is brought to you for free and open access by the Publications at Scholarly Commons. It has been accepted for inclusion in Pacific Magazine and Pacific Review by an authorized administrator of Scholarly Commons. For more information, please contact mgibney@pacific.edu.

✓
COLLEGE OF THE PACIFIC LIBRARY

PACIFIC REVIEW



Official Program

PRICE 15 CENTS

HOMECOMING
October 29th

Pacific vs. Fresno

BAXTER STADIUM — 2:30 P. M.

**“Uncle Tom’s
Cabin”**

Presented by

PACIFIC LITTLE THEATRE
PACIFIC AUDITORIUM — 8:15 P. M.

Pacificana
LD
4445.54
P11

42233
Ja 19 '42

THE PACIFIC REVIEW

OFFICIAL PUBLICATION OF THE PACIFIC ALUMNI ASSOCIATION

BERNIECE FIOLA '28, *Editor*

PUBLISHED BY THE COLLEGE OF THE PACIFIC ALUMNI ASSOCIATION

Published quarterly during the college year in the months of October, January, May and July. Subscription price one dollar a year.

Entered as second-class matter September 20, 1928, at the post office at Stockton, California, under the Act of March 3, 1879.

Membership in the Association and subscription to the Pacific Review \$2.50 a year; Five year membership and subscription \$10.00; Life membership and subscription \$50.00.

OFFICERS OF THE PACIFIC ALUMNI ASSOCIATION

President George M. Hench '02, 405 West Willow Street, Stockton
Vice-President Marie L. Breniman '15, 115 Euclid Avenue, Stockton
Executive Secretary Berniece Fiola '28, 1427 North Van Buren Street, Stockton
Executive Committee: Birdie Mitchell Esser '27, 1111 College Avenue, Stockton; Edna Truman Eiselen '28, 145 Stadium Drive, Stockton; Frederique Breen '28, 2001 Allston Way, Berkeley; Rev. Leslie Kelley '12, P. O. Box 1359, Las Vegas, Nevada.

TABLE OF CONTENTS

VOL. VII	OCTOBER, 1932	No. 1
Editorial		2
Home Coming Home!.....		3
The Pacific Tigers.....		4
The Fresno Bulldogs.....		6
Pacific Football Roster.....		8
Fresno Football Roster.....		9
Off and On the Campus.....		10
Alumni Scholarship Fund.....		11
Pacific Placements		12
San Joaquin Alumni Club Meets.....		13
News - Notes - Names.....		14
Pacific Little Theatre.....		16

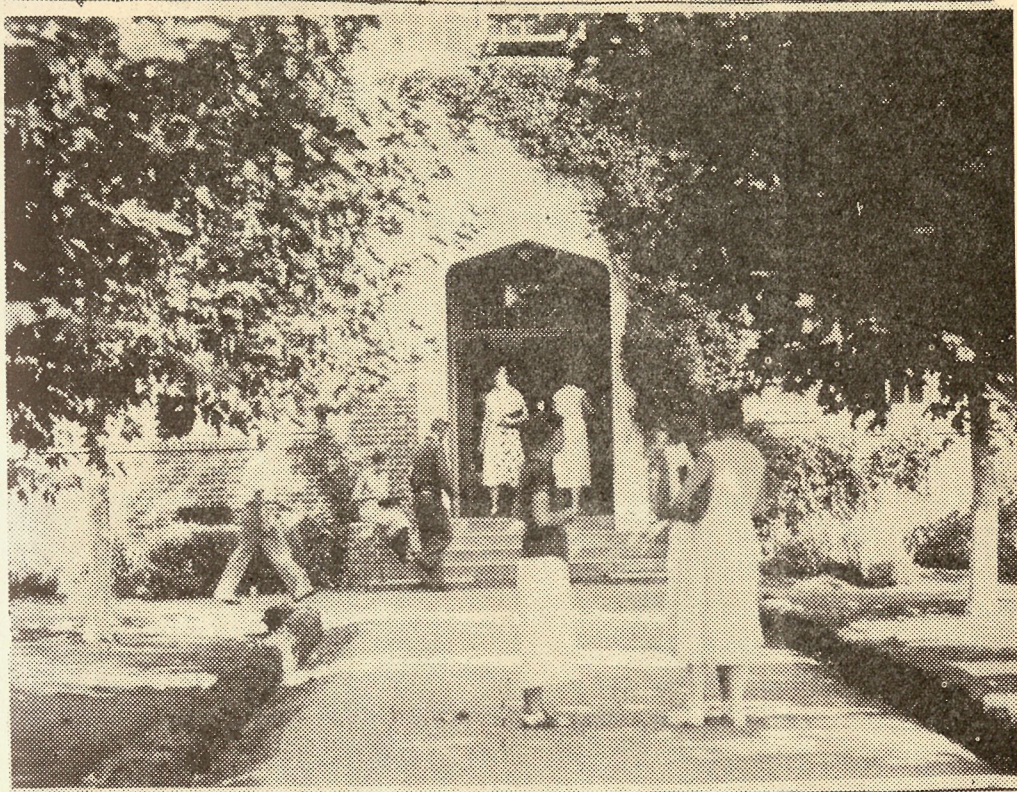
"A Dollar or More"

"A dollar or more from every one who has ever attended Pacific." Such is this year's slogan of the Alumni Association.

"Scholarships for Entering Undergraduates" is the object. Students who could not go to college without \$100 a semester from this source can enroll as rapidly as the Scholarship Fund grows.

The Fund is a free-will offering from the Alumni to Pacific. We who have enjoyed the privileges of the College can thus afford similar opportunities to others.

We can all be "Dollar-a-year-Men" and increase the students and alumni of Pacific. Our pro-rata share is small but the aggregate results will be large. Every former student who hears of the plan can help. Every one can send a dollar. Many can send more. Now's the time to send yours to the Secretary.



SOUTH ENTRANCE TO ADMINISTRATION BUILDING

Home Coming Home

SATURDAY, OCTOBER 29, 1932

Football fans, Pacific boosters, fair, wise, and others . . . come, one and all to Pacific's ninth annual Homecoming, October 29! Your friends will be glad to greet you. The younger grads will be glad to meet you. You will enjoy the luncheon, the game, the play

and everything connected with the place there is no other quite like.

The luncheon is scheduled for 11:30 this year so that all may reach the stadium early. The program will be short and appropriate.

THE GAME

The Homecoming Game this year certainly looks like Pacific's. A contest between the Pacific "Tigers" and the Fresno "Bull-dogs" is always worth seeing, but this one should be especially good for the eyes of the Alumni. The team will undoubtedly do credit to the thorough coaching of "Swede" Righter and his

assistant, "Cunny" Cunningham.

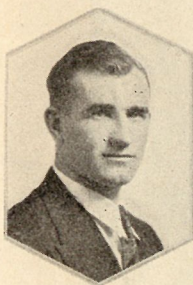
Pacific beat the California Aggies 30 to 0, October 14, and the Aggies beat Fresno State 3 to 0 earlier this month. Alumni who majored in "Math" are figuring the score for October 29 and the rest of us are eager to "come and see" Pacific conquer.

THE PLAY

The Little Theatre is reviving an old favorite. "Uncle Tom's Cabin" will delight former students of Pacific as well as the townspeople of Stockton.

DeMarcus Brown '23 announces that he has an unusually fine cast. That's enough to cause alumni to cast aside all else and come back to the campus, October 29.

The Pacific Tigers



RALPH FRANCIS
Graduate Mgr.

Coach "Swede" Righter's Pacific Tigers opened their 1932 football season with a 20-0 victory over the Modesto Junior College. They bowed to the American Legion Big Shots of Stockton 7-6 and lost their first conference game to San Jose in a severe upset.

"Doped" as underdogs, they came back fighting and took a 30-0 win from the Cal Aggies in one of the most spectacular contests in Pacific football history. This gives them an outside chance for the Far Western Conference title with only Fresno and Chico to meet.

SANTA CLARA, NOVEMBER 5

Santa Clara is on the Pacific schedule this year for the first time since 1928. The game will be played in Kezar Stadium, San Francisco, November 5, and is creating no little amount of interest in Pacific circles. For those who like to compare figures, here are some scores of the season to consider: University of California 20, Cal Aggies 6; Santa Clara 12, University of California 0; Pacific 30, Cal Aggies 0.

The 1932 Bengals are potentially the greatest aggregation ever assembled under the Orange and the Black. In their game with the Fresno Bulldogs at Homecoming, they will be out to show their backers that they are "a scrapping bunch of Tigers," and deserve the distinction of being called "the greatest Bengal eleven ever."

SOME FIGHTING BENGALS

Among the outstanding players of the team are:

ELTON HAMILTON, one of the best kickers on the coast; serving his last year on the Varsity; the mainstay of the Tiger attack; All-Conference halfback last year.

GERALD "BIFF" STROBRIDGE, All-Conference fullback last year; the most consistent Bengal gridder on the squad; the workhorse of Righter's attack; a demon on defense.

TOM WILSON, outstanding passer; shoots a hard and fast ball; as accurate as a championship marksman.

BUDDY GOOLD, the most consistent blocker on the team; calls the signals; the most self-effacing man on the squad.

GEORGE TRUCKELL, a big fellow who doesn't know the meaning of fear.

BOB WICKER, a twisting, swerving halfback who

travels under the name of the Antioch Antelope.

CARL BROWN, a 200-pound tackle from San Francisco, playing his second year on the Tiger team.

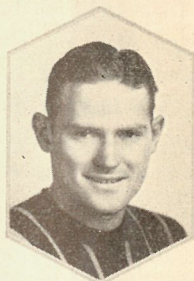
CHRIS KJELDSSEN, regular running guard for two seasons; one of the hardest working men on the team and the quickest.

KEN STOCKING, All-Conference tackle last year; a veteran tackle of Pacific's team, having held the position for four years.

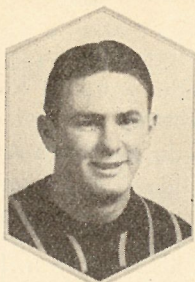
DON SEEGER, a tower of strength in the line, shifted from tackle to guard, where he is showing up fine this season.

WILFRED CARPENTER, remembered by Pacific alumni who saw him play in 1929; playing a fine game at end.

GEORGE CORSON, brother of Coach Jim Corson, playing center for his third year; one of the outstanding scrappers in the Tiger forward wall.



P. Wilson



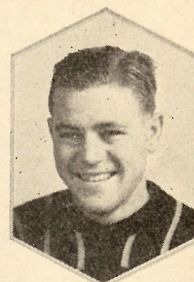
T. Wilson



Strobridge



DeLong



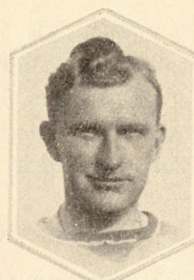
Mannering



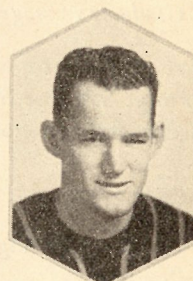
Kjeldsen



Cunningham
LINE COACH



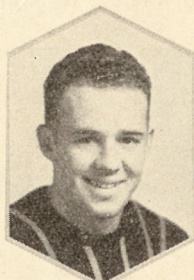
Coach Richter
HEAD COACH



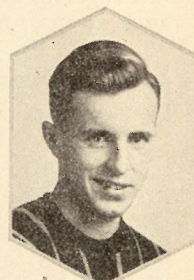
Odale



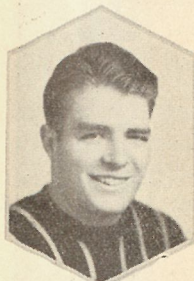
Easterbrook



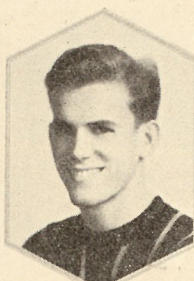
Hamilton



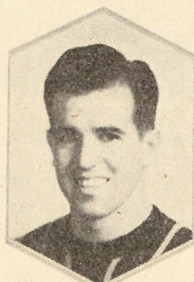
Stocking



Goold



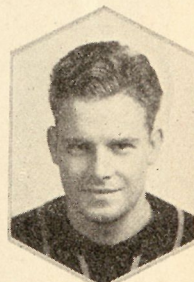
Hench



Wicker

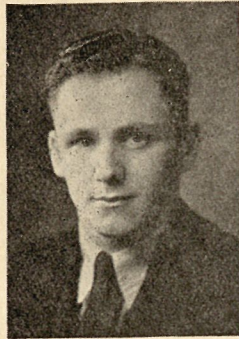


Seeber



Brown

The Fresno Bulldogs



ART SAFSTROM
Graduate Manager

Coach Stan Borleske's Fresno State College Bulldogs opened their 1932 football season with an impressive victory over the powerful San Diego Marines. They lost their next game to the West Coast Army 7-6, and dropped their first conference game of the year a week later to the California Aggies, 3-0. Despite their defeat at the hands of the Aggies, the Bulldogs are not yet out of the Far Western Conference race, and are expected to be well up at the top by the end of the season.

Coach Borleske is coaching at State for his fourth year. In 1930 he produced the conference championship eleven. He was a member of Walter Camp's all-Western team in 1916. Flint Hanner, line coach, is a former Stanford athlete, and former world's champion javelin thrower on U. S. Olympic team.

The Bulldogs play their first intersectional football game at Topeka, Kansas, on Armistice Day against Washburn College. En route to the east they stop at Flagstaff, Arizona, for an engagement with Arizona State College. In the Far Western Conference they have yet to meet San Jose State, Pacific, and the University of Nevada. Last year the Bulldogs failed to repeat their championship victory of 1930, but succeeded in throwing the conference into a four way tie.

SOME GROWLING BULLDOGS

The Outstanding players on the State team are as follows:

CAPTAIN WALT GLENN, a veteran gridder; the lightest man on the team, but a heady field general and a dangerous left-handed passer.

JACK HORNER, playing his third year for State

at fullback; the power house of the Fresno team, and hits the line hard. Jack always wears a smile.

JIGGS PAYNE, a new man at Fresno; the fastest man in the Fresno backfield. The Bulldogs depend a great deal on him to carry the ball around end and through the line.



Backfield—GLENN, HORNER, MATHIESEN, PAYNE.

Line—SCHLEIBAUM, LEWIS, SHIMMIN, NISWANDER, FEICHTMEIR, KAUFMAN, WICKSTROM.

SIM MATHIESEN, considered one of the best punters on the Pacific Coast. His kicks sail over 60 yards at times and they fly high; also a fast passer and packs the ball considerably.

MARTY KAUFMAN, a veteran tackle on Fresno's team. One of the best in the Conference last year and expected to show up well this season.

TED FEICHTMEIR, All-Conference guard last year. Short, but heavy, and fast. Has a hand in every play. His fourth season with the Bulldogs.

HORACE NISWANDER, a heavy but fast lineman. Best center at State for some time. Also does the place kicking and makes kickoff.

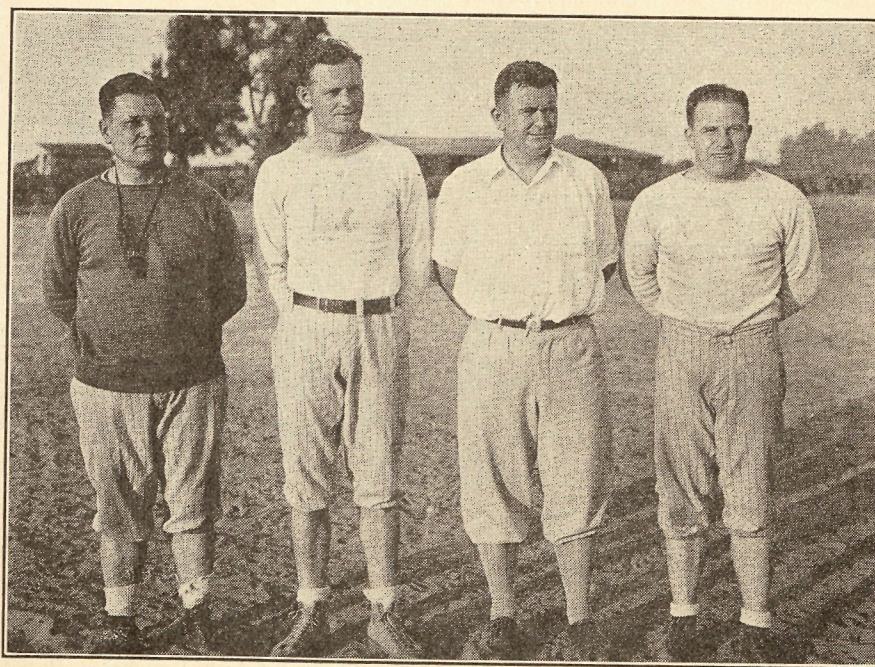
FRANK SCHLEIBAUM, a new man at Fresno. Good end and dependable pass receiver. Improving rapidly and looks like he may make the All-Conference eleven.

WINSLOW WICKSTROM, another candidate for All-Conference end. Great defensive player and can catch passes. His first year at Fresno and going over big.

HOMER SHIMMIN, a powerful lineman and one of the best defensive players ever on a Fresno lineup.

JOE LEWIS, another veteran tackle, playing his last year at State and looks like sure All-Conference man.

FRESNO STATE COACHING STAFF



BORLESKE, BESSEY, HANNER, HERRIN

Pacific 1932 Football Roster

No.	Name	Position	Age	Wt.	Height	Years in College	Home Town
4	Cyril Vassar.....	Half	23	145	5 feet 6 inches	4	Healdsburg
16	George Truckell.....	End	19	174	6 feet 1 inch	2	Lemoore
19	George Hench.....	End	20	150	5 feet 9 inches	3	Stockton
26	Tom Cotter.....	End	21	154	6 feet 2 inches	4	Oakland
31	Harold Easterbrook.....	Full	21	208	6 feet 3 inches	3	Los Gatos
35	Bob Wicker.....	Half	21	175	6 feet	3	Antioch
42	Paul Wilson.....	End	20	161	5 feet 10 inches	3	Stockton
46	Wilfred Carpenter.....	End	25	175	6 feet 3 inches	3	Oakley
47	Glenn Odale.....	End	23	185	6 feet 4 inches	4	Lemoore
48	Gerald Strobridge.....	Full	22	208	5 feet 11 inches	3	Lodi
50	Fred Lefever.....	Guard	20	188	6 feet	3	Stockton
51	Jim Bainbridge.....	Quarter	19	182	6 feet 2 inches	2	Stockton
52	Cecil Mannering.....	Guard	22	180	5 feet 9 inches	1	Napa
53	Roland Hoene.....	Tackle	22	184	6 feet 4 inches	3	Pasadena
54	George Corson.....	Center	21	185	6 feet 1 inch	3	Modesto
55	Bud Goold.....	Quarter	21	168	5 feet 11 inches	4	Stockton
56	Carl Brown.....	Tackle	24	200	6 feet 1 inch	2	San Francisco
58	Elton Hamilton.....	Half	20	170	5 feet 10 inches	4	Patterson
60	Tom Wilson.....	Half	21	185	6 feet 2 inches	3	Napa
61	Leslie Russell.....	Center	21	184	6 feet	2	Auburn
62	Don Seeber.....	Guard	20	175	6 feet 1 inch	2	Oakdale
65	Kenneth Stocking.....	Tackle	21	188	6 feet 2 inches	4	Santa Cruz
66	Milton Schiffman.....	Guard	20	165	5 feet 10 inches	2	Stockton
68	Rutherford Delong.....	Tackle	23	230	5 feet 10 inches	4	Stockton
69	Chris Kjeldsen.....	Guard	20	185	5 feet 11 inches	2	Fort Bragg
70	George Challis.....	Half	19	170	6 feet 1 inch	2	San Francisco
72	Jimmie Thompson.....	Half	21	155	5 feet 7 inches	1	Lemoore
74	Kenneth Miller.....	Half	20	155	5 feet 7 inches	2	Stockton
75	Robert Farina.....	Half	23	160	5 feet 9 inches	2	San Francisco
76	Norman McQueen.....	Guard	22	176	5 feet 10 inches	2	San Francisco
78	Rolland Richardson.....	Center	25	175	6 feet	4	Watsonville
79	Clayton Leonhart.....	Quarter	20	148	5 feet 9 inches	3	Piedmont
80	Pete McCain.....	End	24	175	6 feet 1 inch	3	Visalia

Fresno 1932 Football Roster

<i>No.</i>	<i>Name</i>	<i>Position</i>	<i>Age</i>	<i>Wt.</i>	<i>Height</i>	<i>Years in College</i>	<i>Home Town</i>
1	William Payne.....	Half	22	160	5 feet 8 inches	2	Bakersfield
2	Walter Glenn (Captain).....	Quarter	23	155	5 feet 7 inches	4	Fresno
3	Jess Stillins.....	Guard	21	174	5 feet 10 inches	2	Exeter
4	Lewis Coles.....	Half	19	150	5 feet 8 inches	2	Selma
6	Edwin Boehm.....	End	22	158	6 feet	2	Bakersfield
7	Seymour Mathiesen.....	Half	22	180	6 feet	4	Fresno
8	Tom McKeighan.....	Quarter	22	150	5 feet 9 inches	4	Fresno
9	Gib Rambo.....	Half	22	159	6 feet 2 inches	2	Wasco
10	Jean Hawthorne.....	End	19	144	5 feet 8 inches	2	Oroville
11	Joe Lewis.....	Tackle	20	210	6 feet 1 inch	4	Fresno
12	Elmer Cranmer.....	Full	20	159	5 feet 8 inches	3	Chowchilla
13	Tom Spivey.....	End	19	170	5 feet 11 inches	2	Fresno
14	Howard Pharis.....	Guard	20	175	5 feet 9 inches	2	Caruthers
15	Everett MacQuiddy.....	Half	20	155	5 feet 9 inches	2	Oakland
16	Neal Wade.....	Half	21	157	5 feet 7 inches	3	Mohall, N. D.
17	Arthur Johnson.....	Tackle	21	188	6 feet 2 inches	3	Kingsburg
18	Bob Parr.....	Half	20	185	5 feet 10 inches	2	Muncie, Ind.
19	Gerald Mackersie.....	End	21	180	6 feet 2 inches	3	Dinuba
20	Blair White.....	Center	23	165	5 feet 8 inches	4	Lindsay
21	Joseph Messenger.....	Guard	18	169	5 feet 11 inches		Fresno
22	Ted Feichtmeir.....	Guard	21	187	5 feet 8 inches	4	Chowchilla
23	Lester Steinhauer.....	End	19	175	5 feet 10 inches	2	Fresno
24	Henry Metzler.....	Guard	20	180	5 feet 9 inches	2	Sanger
25	Horace Niswander.....	Center	21	210	5 feet 11 inches	3	Fresno
26	Winslow Wickstrom.....	End	19	175	6 feet	2	Fresno
27	Frank Schleibaum.....	End	20	160	5 feet 11 inches	3	Compton
29	Kenneth Storms.....	Tackle	21	190	6 feet 1 inch	2	Caruthers
30	Corliss Bessey.....	Center	20	175	5 feet 10 inches	2	Dinuba
31	Glenn Baker.....	End	21	185	6 feet	2	Turlock
32	Homer Shimmin.....	Guard	23	195	6 feet	2	Easton
33	Wayne Courtright.....	Guard	19	177	6 feet	3	Santa Cruz
34	Ingvald Ness.....	Tackle	22	188	6 feet	3	Mohall, N. D.
35	Jack Horner.....	Full	22	181	5 feet 11 inches	2	Mohall, N. D.
36	Marty Kaufman.....	Tackle	21	205	6 feet 1 inch	4	Fresno
40	Walter McGeorge.....	Half	21	145	6 feet 1 inch	3	Fresno
45	John Kliewer.....	End	20	175	6 feet 2 inches	2	Dos Palos
46	Earle Maloney.....	Tackle	18	180	6 feet 2 inches	3	Tranquillity

Off and On the Campus

COACH RIGHTER RESIGNS

Coach C. E. Righter announced his retirement as head football coach at Pacific October 15, following one of the most spectacular victories in Pacific football history. The Tigers had won from the California Aggies, 30-0, the night before.

The announcement came unexpectedly from the Coach. Lack of interest in Pacific athletics by Stockton people; lack of respect shown to Pacific teams in their home city; and loss of support from the American Legion are among the reasons given by the Coach for retiring. He will finish this football season and also that of basketball and tennis.

SENIOR COAST MENTOR

Righter came to Pacific in 1921, and ranks the senior among Pacific Coast mentors. He was a basketball and football star in Stanford, as well as a member of the United States Olympic game champion rugby team in 1920. He built Pacific athletics from obscurity to the point of dominance in the Far Western Conference.

A successor will not be named for a time. Direct succession cannot be used, since Harold Cunningham '25, line coach since 1928, has also announced that he is leaving Pacific at the end of this term.

PACIFIC ATHLETE IS KILLED

Lee Fulgham '35, hero of last year's Homecoming game, was killed in an automobile accident at Pismo Beach July 4, 1932.

It was Fulgham who caught the pass that scored the first touchdown against the Aggies. It was he who raced down the field in the last minute of the game to catch a pass and placed the ball over the line to give the Tigers a 20-20 tie with the Aggies.

He was a plucky fellow and is remembered by his teammates for his fighting spirit and gentlemanly conduct on the field.

ALUMNI RECEIVE MASTER'S DEGREES

J. Russell Bodley '23, assistant professor of theory at Pacific, and Hoyle Carpenter '31 were among the 111 graduates of the Eastman School of Music at the University of Rochester in New York last June. Both received the degrees Master of Music. Bodley has resumed his classes at Pacific, and Carpenter has opened a piano studio at his home in Stockton.

CHANGES ON THE FACULTY

Dr. Wilson E. Wilmarth, professor of French and Spanish, and Dr. O. L. Williams, professor of Biologic Sciences, are new members on the Pacific Faculty this year. Dr. Wilmarth holds degrees from Wesleyan College in Connecticut and the University of Wisconsin and has studied at the Middlebury French School and the Sorbonne University. He fills the position left vacant by the resignations of Violette Costabel '22 and John King Hubbard, M. A. '27.

Dr. Williams received his B. A. and M. A. degrees from Nebraska State University and his Ph.D. from the University of California. He replaces Dr. Louis S. Kroeck '95, who retired.

Dr. Gertrude Sibley, associate professor of English, will teach only part-time this year since she has been appointed to succeed Lillian Berthenier, who resigned as assistant dean of women and hostess of Women's Hall.

EXCHANGE STUDENT FROM HAWAII

Kim On Chong, who comes to Pacific this year as an exchange student from the University of Hawaii, is registered as a junior. Mr. Chong was active in debate and Y. M. C. A. work at Hawaii. He likes the spirit of Pacific and is confident that it will be an enjoyable and profitable year for him.

Pacific is being represented at Hawaii by Glen Young, a sophomore.

PACIFIC REUNION IN FORTUNA

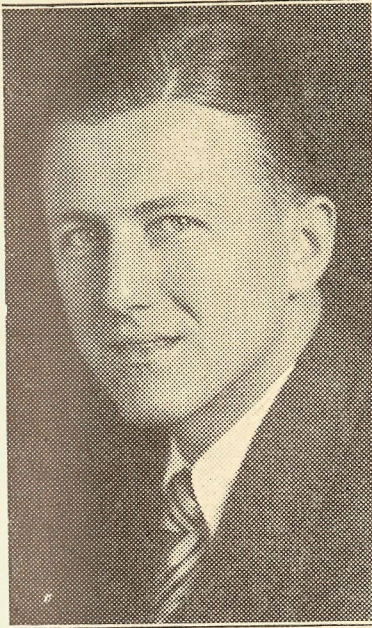
A Pacific reunion honoring Mrs. E. L. Harker (Esther Hornaday '25) was held at the home of Mrs. Paul Jasper (Mary Hornaday '18) in Fortuna, October 4. Mrs. Harker has been spending several months in California and will return to her home in Wailuku in Hawaii next month.

Those who gathered to greet Mrs. Harker were: Dorothy Dale, Lorene Lewis, Mr. and Mrs. Epps (Ethel Zane), Rev. and Mrs. Fred Busher, Mr. and Mrs. Hunter (Florence Leak), Mr. and Mrs. Roland Glines (Constance McKee) and Ross B. Ring.

PACIFIC CLUB

The Pacific Club, new campus organization for students not affiliated with sororities or fraternities, is holding meetings regularly and is planning a fine program of activities for the year. It will hold a reception for non-affiliated alumni who return to the campus for Homecoming.

Alumni Scholarship Fund



ROBERT BURNS '31
First contributor to Scholarship Fund.

The first hundred years are said to be the hardest, but the first hundred dollars was not so difficult to raise for the Alumni Scholarship Fund. The Executive Committee of the Alumni Association voted at the September meeting to inaugurate a new plan to encourage entering undergraduate students, and a copy of the resolution was sent to all former students and graduates of Pacific and Napa College.

The response is most gratifying. Subscriptions began to arrive by return mail, and have continued to reach the secretary's desk each day. Those who have already subscribed are appealing to their friends to "go and do likewise." The plan is so democratic that all can have a part in establishing the new Fund. The slogan is "One Dollar or more from every one who has ever attended Pacific."

ALL TO AID

Alumni who have been wondering how best they could "do something for the College" are welcoming this opportunity. It is a way whereby they can have a part in increasing the enrollment and strengthening the finances of the College at the same time. Many high school graduates who could not otherwise afford to enter Pacific next February will feel grateful to alumni who enable them to pay their tuition.

A dollar or more sent in promptly by each former student will build a splendid Alumni Fund for Scholarships. The amount thus raised will be announced at the Homecoming luncheon, Saturday, October 29. Each reader of the Review can now help materially to increase the number of scholarships which will be available next semester.

FIRST SUBSCRIBERS

Alumni who have already contributed are:

Percy Ahearn '30
Robert G. Aitken, Hon. '03
Capt. William A. Angwin '01
Bessie Backes '30
Dr. Bruce R. Baxter, Hon. '25
Georgiabelle Bingham '20
Leona Bohnert '29
Etta E. Booth, Hon. '25
Carrie E. Bowman '30
Marie L. Breniman '15
H. G. Brown '87
Dr. John L. Burcham, Hon. '14
Robert Burns '31
Joe Capurro '32
Frances Page Cave '31
Mr. and Mrs. H. H. Chastain '29
Harold Cunningham '25
Dorothy L. Dale '27
C. M. Dennis, Hon. '28
Dr. Elbert R. Dille '86
C. R. Disbrow '30
Robin L. Dunn '30
Blanche Farrens '30

Harriet H. Fischer '31
Berniece Fiola '28
Eunice L. Gibson '19
Evan Gillum '29
Marshall Hale '86
Wallace W. Hall, M.A. '32
Florence R. Harelson '21
William Harvie '28
Clara Morris Hay '27
Naomi Helwick '30
Jean Humphreys '27
Dr. R. D. Hunt '90
Vernon Hurd '30
Belle Joachims '29
Charles N. Kirkbride '87
Lorraine Knoles '21
Linton Lundy '29
Henderson McGee '27
Esther C. Macomber '08
Mrs. Irving Martin Sr. '84
Bernice McArdle '27
William Morris '32
Winifred Mulloy '93
Eskdale Newton '29

Marie O'Loughlin '31
Anne Osborn '27
Merlin Ware Porter '26
Monreo Potts '13
Ruth Powell '30
L. H. Quinley '23
Margaret W. Righter '28
Nella Rogers, Hon. '28
Clarence Royse '28
John Ruth '32
Helen Sayles '29
Mrs. F. H. Seares '86
Dr. H. F. Swartz, Hon. '32
Fred H. Tibbetts '03
Henry G. Turner '84
P. J. Van Oppen '32
Florence L. Veall '27
Ruth F. Weitzel '32
Agnes White '27
Lillian P. Williams '31
Mrs. William D. Wood '78
Maurice Wood '27
Jack Wright '17

Pacific Placements

With more than 50% of its registrants now in teaching positions, the Pacific Placement Bureau ranks among the highest in percentage of placements by college and university bureaus in the state this year. Sixty-four per cent of those holding general elementary credentials are teaching, as well as 66% of the Junior High School teachers, and 54% of the general secondary.

Thirty-six per cent of the number registered for music positions are teaching in the public schools. Of the 28 inexperienced music candidates receiving credentials since January, 1932, 32% are teaching.

GENERAL ELEMENTARY

General Elementary teachers in new positions this year are: Irene B. Edson, August school, Stockton; Isabel Falch, Woods school, Woodbridge; Rowena Hardin, music in Sonora; Helena L. Jurgensen, Fairchild school, Stockton; Evelyn L. King, Coalinga; Mary Liscom, Van Allen School, near Escalon; Gladys Pagel, Grant school, Clements; Ruthe Pedelty, Rowe school, Hickman; Robert Rees, Mokelumne Hill; Fern Rommel, French Camp; Muriel Engel, Placerville; Audrey Squires, Brentwood; Jane Wall, Zamora; Irma L. Wiles, Galt; Louise Warren, Planada; R. C. Burnett, principal, West Point; Dorothy Opsal, New Home school, near Hanford; Florabel Brennan, Lathrop; Margaret Lacey, Holt; Sue Drouin, Byron Hot Springs; Aileen Ellerson, Belpassi school, near Modesto; Charlotte Trythal, Avenal; Fred Spooner, principal, Linden; Dorothy Borchard Miller, Georgetown; Evelyn Sawyer, Roberts Ferry school, near Waterford; Ralph Gates, Anaheim; Leslie Burwell, August school, Stockton; Alma Beaman, Summit school, near Clayton; Constance Heurlin, Darwin; and Mitchel Oliver, August school, Stockton.

General Elementary teachers who returned to former positions: Alma Andrews, Huston school, near Lodi; Caroline Leland, Ripon; Doris Comstock, Ceres; Jessie Ann Hall, Brentwood; Eleanor Chambers, Elkhorn school, near Stockton; Alene Parker, Jackson, Wyoming; Thelma Doty, Turlock; Vivian Willis, Salem school, Grimes; and Clarice Van Ormer, Midway school, near Tracy.

Margaret Wibel is teaching in the Junior High School at Martinez; Al Beecroft returned to his position at Arroyo Grande; and Pearl Armstrong returned to Ripon.

GENERAL SECONDARY

General Secondary teachers in new positions include: Ruth Bloamer, Hilmar; Hoarce Chansler, Brea; Robert F. Curran, Rancho San Luis School for Boys, San Luis Obispo; Janice Dixon, Stockton Evening High School; Esther Edwards, Escalon; Kathleen L. Kelly, Calistoga; Ray G. Lawrence, Fair Oaks; Elmer E. Stevens, Grass Valley; Jean Tully, Escalon; Richard Coke Wood, Bishop; Tully C. Knoles, Jr., Marysville; Floyd Russell, Vallejo; Rosalie Williams, New Jersey College for Women, New Brunswick, New Jersey; Peter J. Van Oppen, College of the Pacific; Marie Uebele, Porterville; Salvatore Billeci, Centerville; Cecil Disbrow, Roseville; Rudolph Ferguson, Newman; and Ray Fredericks, Delano.

General Secondary teachers who returned to former positions: Marjorie McGlashan, Gridley; Naomi Helwick, La Verne; Harold Cunningham, College of the Pacific; Agnes White, Dunsmuir; George Knoles, Lodi; Mary Salber, Delano; Harriet Fischer, Nevada City; Ernest Lundeen, Chico; Maurice Wood, Morgan Hill; Clarence Royse, Oakdale; Alice Cusick, Terminus; Jean Williams, Roseville; Harold Chastain, Roseville; Marion V. Rice, Elk Grove; Hazel Glaister Robertson, Taft; and Charles Rinde, Lodi.

SPECIAL MUSIC TEACHERS

Public school music teachers who are teaching in new positions this year include Bernice Bergquest, Davis; Frances Fogerty, evening schools, San Francisco; Frank Freeman, Yuba and Sutter counties; Scott Rudy, Yuba and Sutter counties; Donald Jones, Pittsburg; Dorothy Kirtlan, Ukiah; Mary McConnell, near Roseville; Virl Swan, Sonora; Maddux Hogin, Fair Oaks; Ethel Campbell, Los Angeles county; and Ruth Beers, Delano.

Helen Ayer, Woodland, and Charlotte Kuppinger, Lemoore, returned to their former positions.

San Joaquin Alumni Club Meets



CYRIL OWEN '29

Henderson McGee '27 was unanimously elected president of the Pacific Alumni Club of San Joaquin County, at a dinner meeting held in Anderson Hall on the evening of September 29. More than 50 alumni and guests were present. Other officers elected are: Elizabeth Matthews Lundy '27, vice-president; Cyril Owen '29, secretary, and Bill Klein '29, treasurer.

The Alumni Scholarship Fund for Entering Undergraduate Students was announced by George M. Hench '02, president of the Pacific Alumni Association. He explained that every one who has ever attended Pacific will be requested to contribute one dollar or more to the Fund. Also, the nine district clubs will each sponsor one or more scholarships and will raise money therefor by various fund-raising events.

OWEN, COMMITTEE CHAIRMAN

Mr. Owen was appointed chairman of the Scholarship Fund Committee for the Club. Assisting him are: Jean Humphreys '27, Bernice McArdle '27, Walter Pickering '27, Beryl Burchfiel '24, and the officers of the Club. Mr. Owen and his committee are planning two major events, the details of which will be announced at the Homecoming luncheon.

DR. KELLY SPEAKS

Dr. Robert L. Kelly, executive secretary of the Association of American Colleges, addressed the alumni and commended them upon the inauguration of a Scholarship Fund. He mentioned the importance of

alumni support to a college and told of several outstanding colleges in the East which are surviving only because of such support.

Ileta Shimmin '32, sang several solos, and Alice Langille '32 played violin selections. Arthur Farey '29 gave a humorous reading. Harriet Farr '32 accompanied Miss Shimmin and Miss Farr. President Tully C. Knoles was toastmaster.

ALUMNI AND GUESTS

Alumni and guests present included: Dr. and Mrs. Tully C. Knoles, Dr. and Mrs. Robert L. Kelly, Dr. and Mrs. Fred L. Farley, Mr. and Mrs. Clarence Royse '28 of Oakdale, J. Russell Bodley '23, Beatrice Walton Bodley '27, Beryl Burchfiel '27, Agnes Clark Burchfiel '26, Arthur Farey '29, Edith Griswold Farey '30, George Colliver '15, Iva Cooley Colliver '15,

Ileta Shimmin '32, Bernice McArdle '27, Fern Rommel '32, Belle Joachims '29, Nella Rogers, Hon. '28, E. Grace Ward '02, Helena Jurgensen '32, Harriet Farr '32, Jean Humphreys '27, Lorraine Knoles '21, Marie L. Breniman '15, Helen Shepherd '32, Bettie Kroeck '32, Ellen Deering, Dr. Gertrude Sibley, Marjorie Hunt '32, Alice Langille '32, Anne Osborn '27, Maureen Moore '28, Margaret Hench '32, Berniece Fiola '28, Elizabeth Matthews Lundy '27, Grace E. Sharp '23, Eva M. Cook '32, Margaret Willms Righter '28, Bill Klein '29 of Lodi, George Odell, Jr. '30, Ovid H. Ritter, Jr., '29, Walter Pickering '27, Hoyle Carpenter '30, Wallace W. Hall, M. A., '32, Henderson E. McGee '27, Harold E. Cunningham '24, Robert Fenix '32, George H. Hench '02, Bradford Crittenden '03, and Cyril Owen '29.

News -- Notes -- Names

ENGAGEMENTS

- '31—HUBBARD. Miss Beatrice Koppen, a junior student, to Paul Hubbard.
'32—O'BRIEN. Miss Mary Esther O'Brien to Charles Allen Poage, Jr. of Colusa.

MARRIAGES

- '22—WHITAKER. Miss Georgia E. Taylor to Dr. Leslie Stow Whitaker in San Jose, June 25, 1932. Mrs. Whitaker is a graduate nurse. Dr. Whitaker is a practicing physician and surgeon in San Jose with offices in the Sainte Claire Building.
'27—MITCHELL. Miss Birdie Mitchell to Edward S. Esser in Reno, July 25, 1932. Mrs. Esser is a rural supervisor in San Joaquin county. Mr. Esser is principal of the McKinley Elementary School in Stockton. They are living at 1111 College Avenue, Stockton.
'28—ROYSE. Miss Marie Eastman of Bakersfield to Clarence Royse in Bakersfield, August 9, 1932. They are living in Oakdale, where Royse is a member of the high school faculty.
'28—BURNETT. Miss Carol Burnett to Ted Aungst '29 in Stockton, October 1, 1932. Until her marriage, Mrs. Aungst was librarian at the Stockton High School. They are living in Ripon, where Aungst is a member of the high school faculty.
'28—LAWSON. Miss Verna Margarethe Kopka of Sacramento to F. Melvyn Lawson in Sacramento, June 29, 1932. The bridegroom was attended by Clarence Royse '28 of Oakdale. Ushers were De Marcus Brown '23 of Stockton, Harold Jacoby '28 of Philadelphia, Walter Pickering '27 of Stockton, Floyd Russell '29 of Vallejo, and Percy Smith '27 of San Francisco. Lawson is an instructor and student counsellor in the Sacramento High School.
'29—SATTERLEE. Miss Ruth A. Satterlee to Richard Crothers Cook in Sacramento, August 9, 1932. Mrs. Cook has been teaching during the past two years in the Washington Junior High School, Sacramento. Mr. Cook is the son of Dr. Samuel E. Cook, professor of physics at Pacific. They are making their home in Detroit.
'29—MURRAY. Miss Bernice Murray to Lehman Odale '30 in San Diego, August 31, 1932.
'29—BEATTIE. Miss Margaret Beattie to Brand Thorman Johnson in Petaluma, August 14, 1932. Mrs. Johnson taught in the Manteca Union High School during the past two years. They are living at Willets, where Johnson is a member of the high school faculty.
'29—BEATTIE. Miss Viola DeCamp to William Douglas Beattie in San Francisco, October 12, 1932. They are sailing this month for Italy, where at Milan, Beattie will continue voice study, and where their home will be established for an indefinite time.
'29—CHISHOLM. Miss Frances Chisholm to Charles Elton Dimke in Reno, June 25, 1932.
'30—STARKEY. Miss Marian Starkey to Roger B. Webster '30 in Stanford Memorial Chapel, September 14, 1932. Mrs. Webster taught in Roseville last year. They are living at 620 Lincoln Avenue, Palo Alto, while Webster completes his senior year at Stanford Law School.
'30—WHALLEY. Miss Martha M. Sohm to Clarence E. Whaley in Santa Barbara, October 19, 1932. Whalley is teaching at the Lompoc Elementary School.
'31—EVANS. Miss Dorothy L. Evans to Charles Nelson Howell, Jr., in Stockton, July 16, 1932. Mrs. Howell is teaching in the Veritas Elementary School, Manteca. Mr. Howell has agricultural interests in the Manteca district. Their mailing address is P. O. Box 86, Lathrop.
'31—FRENCH. Miss Fay F. French to James Benton Tulley in Orangevale, July 2, 1932. Mr. Tulley is an attorney in San Francisco. They are living at 839 Post Street, San Francisco.
'31—HUMPHREYS. Miss Gladys Goodwin to John R. Humphreys, Jr., in Manteca, August 18, 1932. Humphreys is a teacher in the Stockton College of Commerce. They are living at 1302 West Flora Street, Stockton.
'31—HENNING. Miss Emma Fogg to Clinton Henning in Reno, June 27, 1932. Mrs. Fogg was a teacher in a Stockton Elementary School. Henning is an engineer with the city of Lodi. They are living at 418 West Elm Street, Lodi.
'31—DURANT. Miss Dorothy Durant to Peter Waline Knoles '25 in Reno, September 3, 1932. They are making their home in Sacramento, where Knoles is an instructor in the Social Science Department of the Sacramento Junior College.
'31—HEMINGWAY. Miss Joan L. Hemingway to O. Vincent Wilson, Jr., in Fairfield, August 16, 1931. Mrs. Wilson is teaching music at the Sonoma High School. Mr. Wilson is with the advertising department of the Morton Salt Company of San Francisco.
'31—BANGHAM. Miss Juen L. Bangham to Evan Edward Chappuis in Susanville, June 19, 1932. Mr. and Mrs. Chappuis are living at 990 Fulton Street, San Francisco.
'31—BERRY. Miss Esther A. Berry to David Bennett '30 in Valley Springs, June 26, 1932. They are making their home in Valley Springs.

IN MEMORIAM

- '66—LEGGETT. Mrs. Elizabeth M. Widney Leggett died at her home in San Francisco June 20, 1932. She held a B. S. degree and was a member of Epsilon Lambda Sigma Sorority.

BIRTHS

- '21; '18—WHITE. To Mr. and Mrs. G. Warren White (Ruby Zahn '21) a son, Gilbert Warren, October 11, 1932.
- '21—GREENWELL. To Mr. and Mrs. R. A. Greenwell (Florence Estes '21) a son, Eugene Estes, September 1, 1932.
- '23—WILLIAMS. To Mr. and Mrs. Kenneth C. B. Williams, a daughter, Marjorie Loraine, July 7, 1932.
- '24—REYNOLDS. To Mr. and Mrs. Carl Arthur Reynolds (Margaret Okla Stout '24) a son, Eugene Arthur, September 19, 1932.
- '25—LUCAS. To Mr. and Mrs. Lee Lucas (Gladys Dufur '25) a son, Kenneth Jerome, August 20, 1932.
- '28; '25—CUNNINGHAM. To Mr. and Mrs. Harold Cunningham (Olive Morris '28) a daughter, Ione Ann, September 4, 1932.
- '30—SIX. To Mr. and Mrs. Jack Six (Irene Meyer '30) a daughter, Jacklyn Gail, September 21, 1932.

PERSONALS

- '95—MORRITT. Dr. Walter Morrirt was in Europe this summer as a member of the American Social Science Commission party. He visited Russia, the Baltic States, the Polish Corridor, as well as the principal portions of Europe.
- '01—ANGWIN. Captain William a Angwin is stationed at Naval War College, Newport, Rhode Island, this year.
- '02—BAKER. Mrs. Auril T. Baker, wife of the late Rev. Hugh Baker '98, is continuing the Baker Print Shop at her present address, 1917 Harmon Street, Berkeley.
- '05—TUTTLE. Dr. Harold Saxe Tuttle has returned to Pacific University, Forest Grove, Oregon, after spending six years at the University of Oregon.
- Hon. '08—WILLIAMS. The new address of Rev. James H. N. Williams, superintendent of Nevada Mission District, is 671 Vincente Avenue, Berkeley.
- '14—BURTON. Miss Miriam Burton, Conservatory faculty member who is on a leave of absence this semester to take work at the University of Southern California, is studying with Olga Steeb, famous California pianist.
- '19—FISKE. Louis M. Fiske, Methodist missionary, is with the Spanish-American Institute at Gardena, California. He addressed the faculty and students at Pacific last spring.
- '21—MILLER. Miss Evelyn Miller, who recently received her doctor's degree from Columbia, is now Dean of Women and Associate Professor of Romance Languages at Allegheny College, Meadville, Pennsylvania.
- '22—BOWEN. Mrs. Kenneth L. Bowen (Constance L. Bertels) is living in Tulare, where her husband is City Editor of the Tulare Advance Register.
- '23—BRYANT. Ray W. Bryant, city gardener of San Jose, is residing at 741 South Sixth Street, San Jose.

'25—HARPER. Miss Cornelia B. Harper, teacher at Washington School, San Leandro, is living at 389 Woodland Park, in that city.

Hon. '25—BAXTER. The honorary degree of doctor of laws was conferred upon Dr. Bruce R. Baxter, dean of the School of Religion of the University of Southern California, by the California Christian College of Los Angeles at its commencement exercises, June 17. This is the first LL.D. degree granted by this institution.

'26—HAMANN. Miss Wilhelmina M. Hamann is teaching music at the Junior and Senior High School, Maricopa, California.

'26—SMITH. Miss Georgia Smith, member of the Stockton High School faculty, played the role of an elderly woman in a motion picture filmed near Stockton recently by the RKO Film Corporation "The Conqueror" is the title of the picture.

'27—HUBBARD. John K. Hubbard, former professor of Spanish at Pacific, is the minister at Elim Tabernacle, 3440 Foothill Blvd., Oakland. He resides at 2932 76th Avenue.

'27—BRITTSAN. Ralph M. Brittsan, electrical engineer with the Pacific Gas & Electric Company, has established his home at 1320 Buena Vista Avenue, Stockton, since his marriage in June.

'28—CONNOLLY. Mrs. Agnes McGee Connolly is living at 420 East Cleveland Street, Stockton, since her marriage to Thomas E. Connolly, Jr., last spring.

'28—STONE. Dan Stone is a graduate student at Stanford University, where he is working toward his doctor's degree.

'28—FARRAR. Laurence A. Farrar is with the Pacific Gas & Electric Company in Stockton.

'28—TAYLOR. Mr. and Mrs. Elliott Taylor (Burta Beers '29), teachers in the American Albanian Institute at Kavaja, Albania, spent the month of August with relatives and friends in California.

'29—DEVEREAUX. Harry Devereaux, head of the historical research department of the Queensborough Public Library in Long Island City, New York, spent his summer vacation in Stockton. He made the trip each way by airplane.

'29—AUNGST. Ted Aungst, history teacher at Ripon Union High School, traveled to Los Angeles by bicycle to witness the Olympic Games.

'30—MOODY. Lieutenant Howard Moody, army aviator, is stationed at Crissy Field in San Francisco.

'31—COFFMAN. Miss Lenora Coffman, who took graduate work at the University of Boston last year, is now assistant manager of Fox Hall, one of the women's dormitories there.

'31—DAVIS. Katherine C. Davis, who took graduate work in the Library School at the University of California last term, is now Children's Librarian at the Richmond Public Library. She is living at 2213 Roosevelt Avenue in Richmond.

PACIFIC LITTLE THEATRE

PRESENTS AT

HOMEcoming OCTOBER 29

"Uncle Tom's Cabin"



DEMARCUS BROWN
*Director of the Pacific Little
Theatre*

PLAYS OF THE SEASON

- OCTOBER 28, 29
"Uncle Tom's Cabin"
NOVEMBER 17, 18
"Enter Madame"
DECEMBER 9, 10
"A Churchmouse"
JANUARY 19, 20
"The Second Mrs. Tanquary"
FEBRUARY 17, 18
"The Mask and the Face"
MARCH 17, 18
"Twelfth Night"



The eighth season of the Pacific Little Theatre directed by DeMarcus Brown '23 promises to be colorful and unusually entertaining.

The Little Theatre attracts students interested primarily in Dramatic Arts and has a splendid following of patrons.



SCRIP BOOKS (Good for 6 admissions)

- To the Public - - - - \$5.00
To paid Members of the
Alumni Association - - - \$4.00