



9-24-1941

September 24, 1941 Football Program, COP vs Hawaii

University of the Pacific

Follow this and additional works at: <https://scholarlycommons.pacific.edu/ua-football>

Recommended Citation

University of the Pacific, "September 24, 1941 Football Program, COP vs Hawaii" (1941). *Football*. 41.
<https://scholarlycommons.pacific.edu/ua-football/41>

This Book is brought to you for free and open access by the Athletics at Scholarly Commons. It has been accepted for inclusion in Football by an authorized administrator of Scholarly Commons. For more information, please contact mgibney@pacific.edu.

HAWAII PACIFIC

Official Program

10¢



BAXTER STADIUM

SEPTEMBER 24, 1941...KICKOFF 8:00 P. M.

STOCKTON.....CALIFORNIA...

PACIFIC TIGERS

vs.

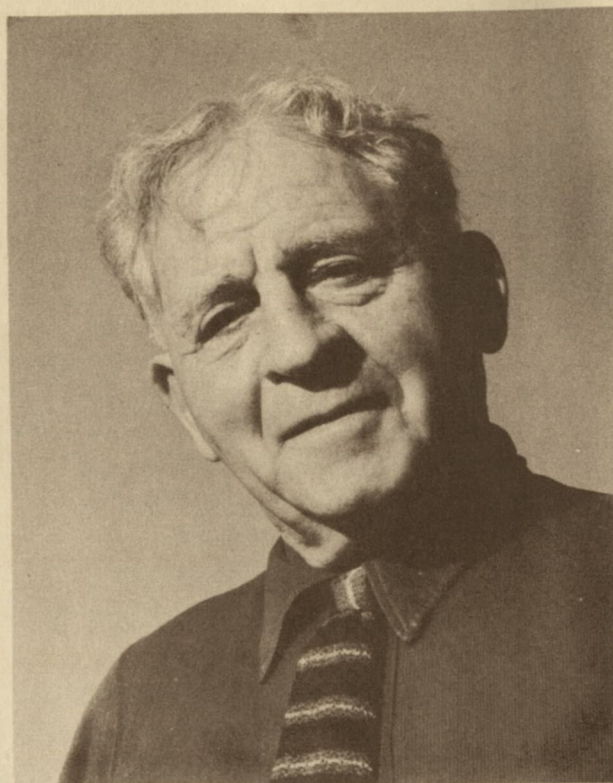
HAWAII RAINBOWS

College of the Pacific welcomes you to the opening game of the 1941 season, and the first intersectional collegiate game in Stockton in eleven years. All Stockton joins with Pacific in welcoming the Hawaii players to the mainland. Royally entertained two years ago in Honolulu by the University of Hawaii, Pacific is proud to be able to play host to the colorful Rainbow team and staff.

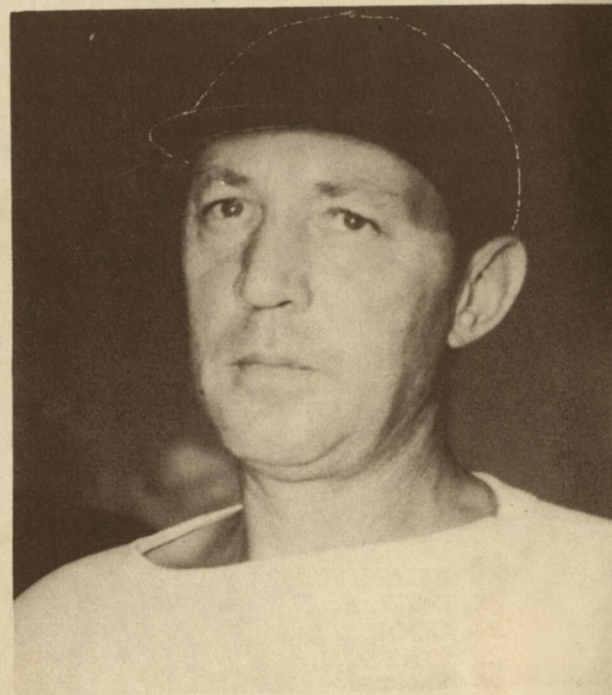
Coach Eugene Gill's troupe comes from the farthest west of all American Football college teams and is aptly tagged the "Rainbows," for the personnel of this roster lists the most cosmopolitan squad in the world. The racial background of each player is indicated in the roster on page four.

Coach Amos Alonzo Stagg tonight fields his ninth team for Pacific and the fifty-second team in his amazing, unparalleled coaching career. Tonight's game marks the 548th time he has sent a squad into official college competition. His 1941 varsity is largely a new squad, only nine players having had previous varsity experience. Many others, however, have successful Junior College football careers behind them, and all are anxious and ready to play the game.

In the only previous meeting between the two teams, Pacific won from Hawaii at Honolulu by a 19-6 score. But the fact this game was played two seasons past, that Coach Gill has taken over the coaching reins at Hawaii since that time, and that there are so many new men on both squads, leaves little basis on which to "dope" tonight's game in advance. All that can be said is good luck to every player on the field and best wishes to Coaches Gill and Kaulukukui, Stagg and Francis.



AMOS ALONZO STAGG
Presents His 52nd
Collegiate Team



EUGENE L. GILL
Coaches the Farthest West
Team in the World

STARTING LINE-UP

Tigers			Rainbows	
No.	Name	Position	Name	No.
		LER		
		LTR		
		LGR		
		C		
		RGL		
		RTL		
		REL		
		Q		
		LHR		
		RHL		
		F		

OFFICIALS FOR TONIGHT'S GAME

REFEREE — H. B. LENZ, Stockton

HEAD LINESMAN — BOB EVANS, S. F.

UMPIRE — ALAN WILLIAMS, Sacramento

FIELD JUDGE — GEO. M. HICKS, Sacto.

Score	1	2	3	4	Total
PACIFIC					
HAWAII					

CONDENSED ROSTERS

College of Pacific

2 MILLER, b	31 IJAMS, t
6 MOKIAO, b	32 SPAULDING, g
7 ALPHONSE, b	34 LYONS, t
8 BROWN, b	36 SLAUGHTER, e
9 FRISHHOLZ, b	37 BOYARSKY, e
10 CAMICIA, b	39 HANSON, e
11 MANDERY, b	40 REMPEL, t
12 WARKENTIN, b	42 BIRD, g-b
14 SLAUGHTER, b	43 HAY, t
16 BRANDON, b	44 BESSAC, t
17 WARD, b	
18 JOHNSON, g	
19 HAMM, e	
20 DEWEY, c	
21 KLAPSTEIN, t	
22 DOW, c	
24 COOK, g	
25 WATSON, g	
26 SMITH, g	
27 HANSON, g	
28 HUFF, t	
29 COLLIER, g	
30 LEHMAN, e	

University of Hawaii

21 CHUNG, c
22 KOMETANI, e
24 COLLINS, hb
25 SMITH, hb
26 DOWSON, f
28 DOI, g
30 WATASAKI, t
31 SILEN, t
33 NEFF, c
34 SMITH, g
35 PEDRO, f
36 CHOY, g
37 WONG, q
41 ORNELLAS, g
42 HART, hb
44 ABREU, hb
47 UCHIMA, t
48 HENDERSON, fb
50 KAMAKANA, g
52 KIM, g
53 NAUMU, hb
58 COULTER, e
59 CONKLING, e



COLLEGE OF THE PACIFIC VARSITY FOOTBALL ROSTER, 1941

No.	Name	Pos.	Age	Wt.	Ht.	Var. Ex.	Home Town
2	MILLER, GEO.	B	21	169	5-9	1	Ferndale
6	MOKIAO, CHAS.	B	23	162	5-8	0	Honolulu
7	ALPHONSE, GORDON	B	20	155	5-8	0	Hilt
8	BROWN, JOHN	B	21	183	6-	0	Napa
9	FRISHHOLZ, JACK	B	22	184	6-1	1	Wilmington
10	CAMICIA, JOHN	B	21	168	5-9	0	Stockton
11	MANDERY, GAVIN	B	21	182	6-	0	Marysville
12	WARKENTIN, VERNON	B	21	163	5-10	1	Reedley
14	SLAUGHTER, KEITH	B	22	159	5-10	0	Porterville
16	BRANDON, LEONARD	B	19	155	5-5	0	Fowler
17	WARD, CLINT	B	22	187	5-11	1	Alameda
18	JOHNSON, BILL	G	20	188	5-8	0	Stockton
19	HAMM, BEN	E	20	156	5-10	0	Berkeley
20	DEWEY, BOB	C	23	183	5-10	1	Oakland
21	KLAPSTEIN, EARL	T	20	202	6-	0	Lodi
22	DOW, LES	C	21	175	6-	2	Vallejo
24	COOK, LES	G	21	173	6-	0	Colusa
25	WATSON, JIM	G	20	194	6-	0	Marysville
26	SMITH, ART	G	23	168	6-	0	Oakland
27	HANSON, WM. P.	G	21	175	6-1	0	Burlingame
28	HUFF, DON	T	19	206	6-2	0	Millbrae
29	COLLIER, LAWRENCE	G	21	176	5-10	0	Porterville
30	LEHMAN, ROBT.	E	22	166	6-	0	Reedley
31	IJAMS, BOB	T	21	220	6-2	2	Stockton
32	SPAULDING, ED	G	20	179	5-8	0	Richmond
34	LYONS, JIM	T	20	185	5-10	0	Linden
36	SLAUGHTER, CLARE	E	20	178	6-2	0	Porterville
37	BOYARSKY, WILLIS	E	22	169	5-9	1	San Jose
39	HANSON, WM. (Bill)	E	19	178	6-2	0	Kingsburg
40	REMPEL, ARON	T	28	194	6-1	2	Dinuba
42	BIRD, JAMES	G-B	22	154	5-5	0	Stockton
43	HAY, CHARLES	T	21	242	6-2	0	Bakersfield
44	BESSAC, FRANK	T	19	179	6-1	0	Lodi

PACIFIC LITTLE THEATRE
announces the opening of its
18th SEASON
OCTOBER 31st
With the American Comedy Hit
"THE MAN WHO CAME TO DINNER"



BETWEEN THE HALVES

Directed by the distinguished conductor, Mr. Frank Mancini of Modesto, eleven colorful marching bands will play en masse. Pacific cordially greets the more than 500 musicians and directors who have made this great spectacle possible, as arranged by Charles E. Warmer, Pacific Public Relations representative, and Robert L. Gordon, director of the Pacific marching band.

THE FOLLOWING BANDS ARE PARTICIPATING:

STOCKTON HIGH SCHOOL	MANTECA HIGH SCHOOL
GALT HIGH SCHOOL	MODESTO JUNIOR COLLEGE
SONORA HIGH SCHOOL	PLACER JUNIOR COLLEGE
TRACY HIGH SCHOOL	SACRAMENTO SCIOTS BAND
ESCALON HIGH SCHOOL	PACIFIC BAND
TURLOCK HIGH SCHOOL	

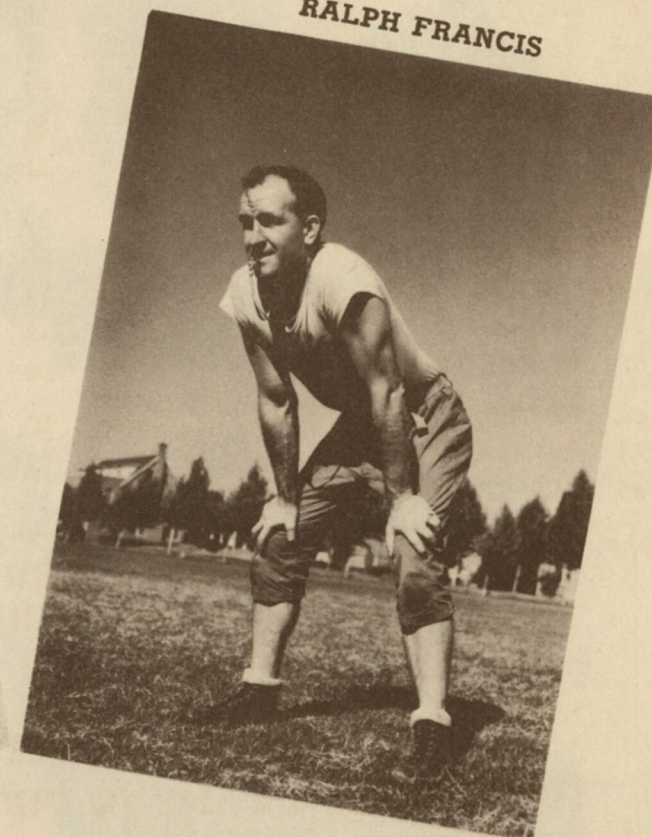
Official Band for the University of Hawaii tonight is the colorful Sacramento Sciots Organization.

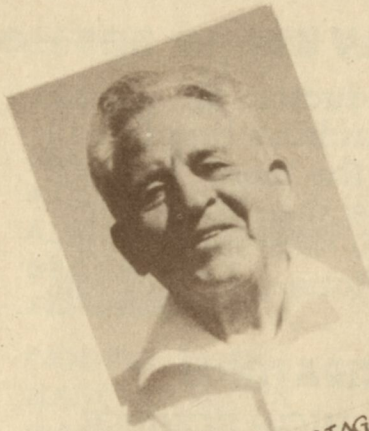
ASSISTANT COACHES

THOMAS KAULUKUKUI



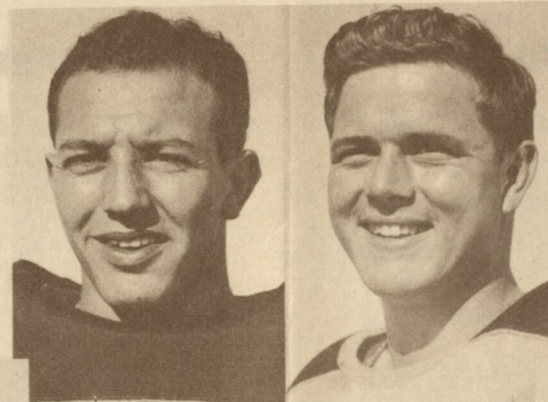
RALPH FRANCIS





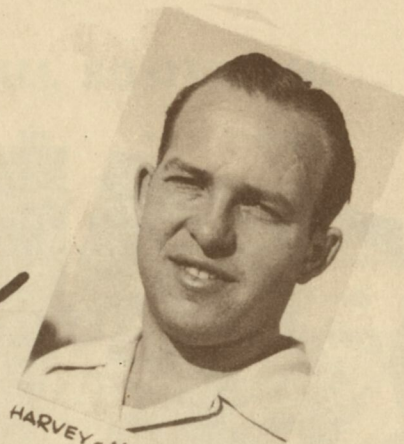
COACH
AMOS ALONZO
Stagg

STAGG



37 BOYARSKY 9 FRISHOLZ

1941
COLLEGE of PACIFIC
Tiger Varsity



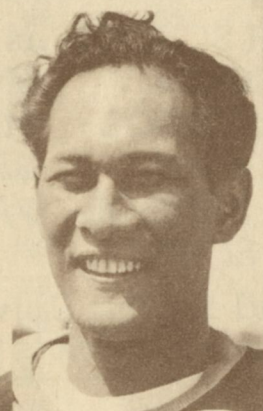
HARVEY - MGR.



24 COOK



21 KLAPSTEIN



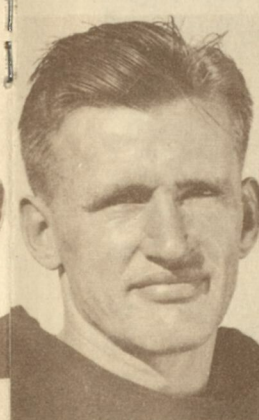
6 MOKIAO



12 WARKENTIN



17 WARD 40 REMPEL



20 DEWEY



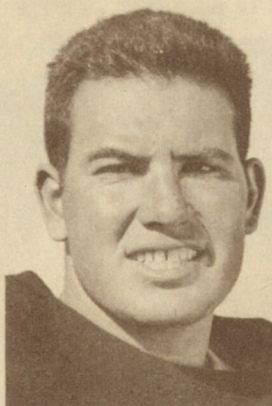
10 CAMICIA



43 HAY



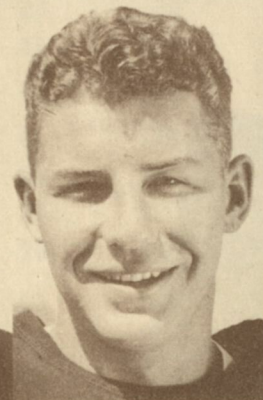
30 LEHMAN



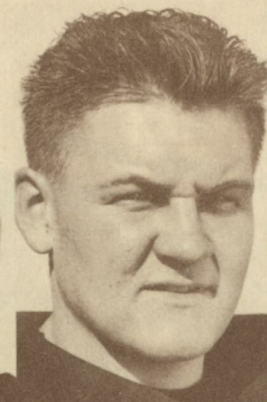
31 IJAMS



19 HAMM



22 DOW



34 LYONS



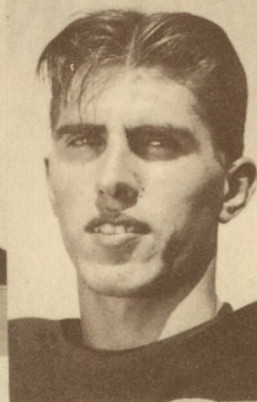
18 JOHNSON 44 BESSAC



8 BROWN



2 MILLER



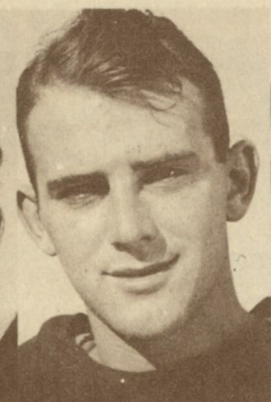
36 C. SLAUGHTER



27 W. HANSON



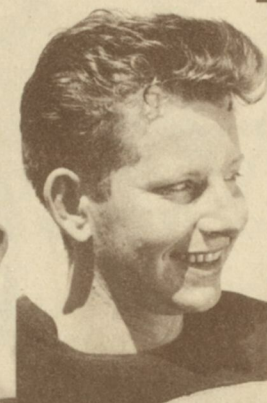
28 HUFF



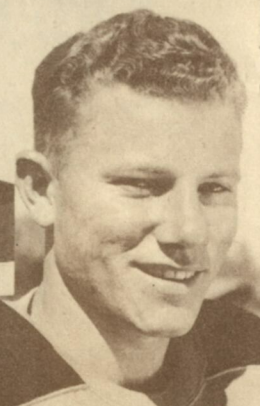
39 W.P. HANSON



42 BIRD



26 SMITH



16 BRANDON 32 SPAULDING



14 K. SLAUGHTER



11 MANDERY

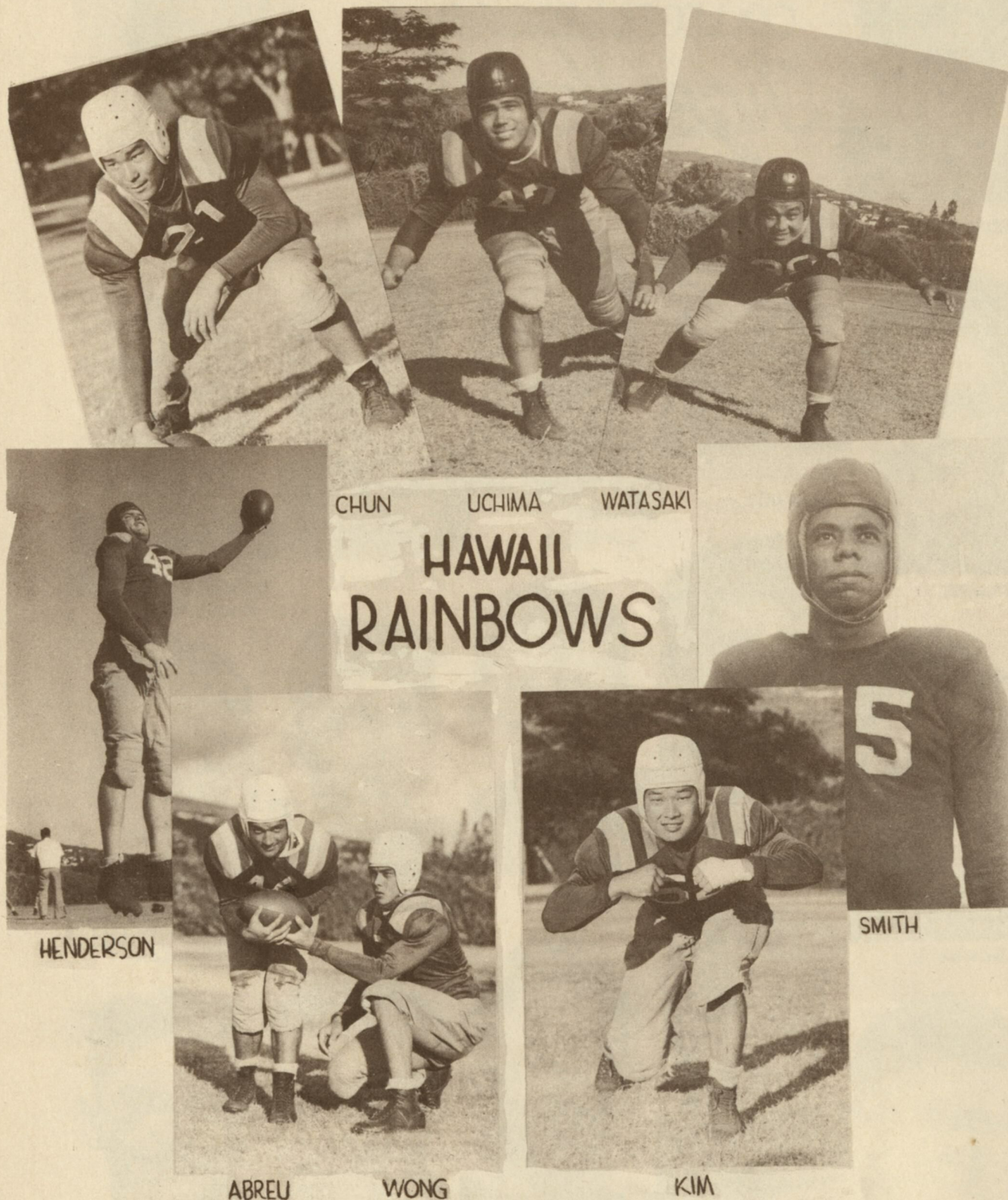


25 WATSON



29 COLLIER





UNIVERSITY OF HAWAII FOOTBALL ROSTER, 1941

No.	Name	Pos.	Age	Wt.	Ht.	Yr.	Race
21	CHUNG, KAI BONG	C	21	188	6 -	Jr.	Korean
22	KOMETANI, HAROLD	E	21	180	6 -	Sr.	Japanese
24	COLLINS, LOUIS	HB	20	200	6 -	Soph.	Chinese-Hawaiian
25	SMITH, NOLLE	HB	21	160	5 - 10 $\frac{1}{2}$	Sr.	Indian-Irish
26	DOWSON, CHARLES	F	19	210	6 - 1	Soph.	English-Hawaiian
28	DOI, WALLACE	G	19	155	5 - 6	Soph.	Japanese
30	WATASAKI, SADA O	T	21	195	5 - 9	Jr.	Japanese
31	SILEN, AZEL	T	20	200	6 - 1	Jr.	Swed.-Ger.-Port.
33	NEFF, AARON	C	21	195	6 - 1	Jr.	Port.-Hawaiian
34	SMITH, JERE	G	19	168	5 - 8 $\frac{1}{2}$	Jr.	Ir.-Eng.-Sc.-Fr.
35	PEDRO, TOM	F	23	184	6 - 2 $\frac{3}{4}$	Jr.	Haw.-Chin.-Port.-Ir.
36	CHOY, ALBERT	G	20	165	5 - 8 $\frac{1}{2}$	Soph.	Chinese
37	WONG, MUN KIN	Q	19	155	5 - 9	Soph.	Chinese
41	ORNELLAS, EMORY	G	19	177	5 - 10	Soph.	Dan.-Port.
42	HART, RICHARD	HB	20	168	5 - 10 $\frac{1}{2}$	Soph.	Ger.-Eng.-Haw.
44	ABREU, MELVIN	HB	21	165	5 - 8	Sr.	Port.-Hawiiian
47	UCHIMA, UNKEI	T	21	190	5 - 9	Jr.	Japanese
48	HENDERSON, BOB	FB	22	185	6 - 1	Sr.	Scotch-Fr.-Ger.
50	KAMAKANA, SPENCER	G	20	185	5 - 9	Soph.	Hawaiian
52	KIM, CHIN DO	G	23	160	5 - 7	Sr.	Korean
53	NAUMU, JOHN	HB	21	165	5 - 7 $\frac{1}{2}$	Jr.	Irish-Hawaiian
58	COULTER, BOB	E	21	163	6 -	Sr.	Scotch
59	CONKLING, LLOYD	E	20	175	5 - 10	Sr.	Ir.-Eng.-Hawiiian



**FRIDAY NIGHT — BAXTER STADIUM
STOCKTON JUNIOR COLLEGE**

— vs. —

SAN BERNARDINO JUNIOR COLLEGE

KICK-OFF 8:00 P. M.

Let's give Coach Larry Siemering
a big send-off in his first game.

PACIFIC ATHLETIC STAFF

Head Coach . . . Amos Alonzo Stagg
 Line Coach Ralph Francis
 Assistant Coaches
 . . . Al Irwin, Eric Jacobsen, Ed Denny
 Director of Athletics
 Robert L. Breeden
 Public Relations Representative
 Charles E. Warmer
 Athletic Manager . . . Harry Harvey
 Trainer Floyd Swagerty
 Ticket Manager Dotte Francis
 Team Physician . . Dr. George Sanderson

PACIFIC SCHEDULE, 1941

Sept. 24 — U. of Hawaii at Stockton
 Oct. 3 — Chico State at Stockton
 Oct. 11 — South. Meth. U at Tyler, Texas
 Oct. 17 — Calif. Aggies at Stockton
 Oct. 24 — San Jose State at Stockton
 Nov. 1 — Humboldt State at Stockton
 Nov. 11 — Fresno State at Fresno
 Nov. 19 — Santa Barbara St. at Santa B.
 Nov. 28 — Cal. Ramblers at Stockton
 Dec. 5 — San Diego St. at San Diego

HOW TO READ SPORTS TIMER

The Sports Timer in this Stadium is operated electrically, and it is always correct to the second.

The long hand is the **SECOND** hand; the short hand indicates **MINUTES** left to play in the quarter.

Associated installed the Electric Sports Timer for your greater enjoyment of football. For your greater enjoyment of motoring, ask your nearest Smiling Associated Dealer for an Associated Travel Card.

Tide Water Associated Oil Company
 another ASSOCIATED service

HAWAIIAN ATHLETIC STAFF

Head Coach Eugene L. Gill
 Assistant Coach . . Thomas Kaulukukui
 Student Managers
 Seichi Toda, Edwin Liu, Jack Chapman
 Business Manager . . Ralph Yempuku
 Team Physician . . Dr. N. M. Benyas

PLEASE DRIVE CAREFULLY when you leave the stadium. Remember that haste makes waste. Strive for **SAFETY** rather than **SPEED**.

OFFICIAL PROGRAM

Published for the
 Board of Athletic Control
 by Pacific News Service
 Arthur Farey, Director

PUBLIC ADDRESS SYSTEM

Courtesy of
SEARS ROEBUCK & CO.
 Stockton, Calif.
 Announcer - Ellis Lind

REST ROOMS AT
 SOUTH EAST ENTRANCE



Penalties



ABOVE—Military salute: **UNNECESSARY ROUGHNESS, ILLEGAL DEFENSIVE USE OF HANDS**. (Penalty, 15 yards.) **ALSO USED FOR FLAGRANT ROUGHING.** (Penalty, half distance to goal line and disqualification.)



ABOVE — Hands on hips: **OFFSIDE.** (Penalty, 5 yards.)



ABOVE—Waving hand behind back: **ILLEGAL FORWARD PASS.**



ABOVE—Pushing movement of hands to front with arms in a vertical position: **CRAWLING, PUSHING, OR HELPING BALL-CARRIER.** (Penalty, helping ball-carrier, 15 yards; otherwise, 5 yards.)

Horizontal arc of either hand: **PLAYER ILLEGALLY IN MOTION.** (Penalty, 5 yards. If from shift or huddle, 15 yards.)



Arms folded: **FLYING BLOCK OR TACKLE.** (Penalty, 5 yards.)



ABOVE — Swinging arms horizontally: **USED TO INDICATE INCOMPLETE PASS, MISSED FIELD GOAL OR CONVERT, ETC.**



ABOVE—Holding one wrist: **HOLDING.** (Penalty—by offense, 15 yards; by defense, 5 yards.)



ABOVE—Hands above head: **SCORE.** (Used after touchdown, field goal, or convert. Palms of hands together indicate a safety.)



ABOVE—Pushing hands forward from shoulders: **INTERFERENCE WITH FORWARD PASS, OR PASS TOUCHING INELIGIBLE PLAYER.** (Penalty, if interference by offense, 15 yards; otherwise, ball to opponents at point of foul.)

AND HAND SIGNALS

PENALTIES

LOSS OF FIVE YARDS

- | | | |
|---|--|---|
| 1 Holding by defensive side | 6 Offside | 10 Backfield in motion |
| 2 Crawling | 7 Encroachments on neutral zone | 11 Failure of substitute to report umpire |
| 3 Attempt to draw opponents offside | 8 Interference with opponents before ball is put in play | 12 Violation of kick-off formation |
| 4 Delaying game | 9 Taking time out more than three times during half | 13 Illegal use of hands and arms by defensive players |
| 5 Taking more than two steps after fair catch | | |

LOSS OF FIFTEEN YARDS

- | | | |
|---|--|---|
| 14 Holding by side in possession of ball | 18 Interference with fair catch | 24 Individual going on field without permission |
| 15 Hurdling | 19 Tripping | 25 Failure to come to one-second stop in shift play |
| 16 Coaching from sidelines | 20 Unsportsmanlike conduct | 26 Roughing the kicker |
| 17 Intentional grounding of forward pass or ball intentionally thrown into an ineligible player on or behind the line of scrimmage. In addition to 15 yards penalty, team also loses down | 21 Piling up | 27 Clipping |
| | 22 Tackling out of bounds | 28 Illegal return to game |
| | 23 Pushing, pulling, interlocking interference, etc. | |

OTHER PENALTIES

- | | | |
|--|---|--|
| 29 Foul within one-yard line: half distance to goal line | 31 Slugging: half distance to goal and disqualification | 33 Any act committed by an outsider but affecting the game: the referee is empowered to impose such penalty as justice may require |
| 30 Interference with forward pass by defense: loss of the ball | 32 Flagrant roughing of kicker: 15 yards and disqualification | |



**Follow the games
away from home with
ASSOCIATED**

When College of Pacific plays out-of-town, you're as close to the game as your nearest radio. And, you can count on your Associated Sport-caster to bring you all the excitement and color of the games. And, to get the best performance from that car of yours remember to have it serviced regularly at your Smiling Associated Dealers'. Play ball with Associated.

**WATCH THE
ASSOCIATED SPORTS TIMER**

It tells you at any second just how much time is left in each quarter. Associated provided this timer here at the stadium to add to your enjoyment of this game.

Tide Water Associated Oil Company

another ASSOCIATED service

THOSE NEW RULES

Depending upon how much coaches utilize them, new football rules in effect this year can affect the game materially.

1. This year a team can make as many substitutions as it wishes, and a player may return to the game in the same period in which he was withdrawn. This is a rule which may be helpful, especially to small squads.
2. There is much conjecture as to the significance of the rule which now permits the ball to be handed FORWARD to a player in the backfield, whereas formerly, it was required that it be handed backward or laterally in behind-the-line exchanges. Only the progress of a season of play will show how much this rule will affect offensive football.
3. Another important change affects the passing game. Formerly, a 4th-down pass, incomplete in the end zone, was ruled a touchback and the ball was put into play on the 20-yard line. Now, such an incomplete pass is regarded as any other play, and the defending team takes possession at the point where the play started. This should encourage end-zone passing for the heavier burden is thrown on the defenders.
4. The other new rules virtually mean "hands off the ball" when it is bouncing around inside the ten-yard line after a punt, for if a player of the kicking side touches it in this zone it immediately becomes a touchback.