



10-29-1955

October 29,1955 Football Program, UOP vs Washington State

University of the Pacific

Follow this and additional works at: <https://scholarlycommons.pacific.edu/ua-football>

Recommended Citation

University of the Pacific, "October 29,1955 Football Program, UOP vs Washington State" (1955). *Football*. 38.

<https://scholarlycommons.pacific.edu/ua-football/38>

This Book is brought to you for free and open access by the Athletics at Scholarly Commons. It has been accepted for inclusion in Football by an authorized administrator of Scholarly Commons. For more information, please contact mgibney@pacific.edu.



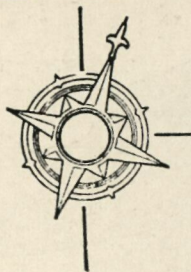
COLLEGE OF THE PACIFIC

-VS-

WASHINGTON STATE

PACIFIC MEMORIAL STADIUM - SATURDAY, OCT. 29, 1955

Official Program 25c



Going Somewhere?
...Go By Air

Authorized Airlines Agents
United Air Lines
Western Airlines
American Airlines
Trans World Airways

Telephone HO 6-9096

Charles Travel Service

125 NORTH HUNTER STREET
STOCKTON 2, CALIFORNIA

EXCLUSIVE AGENTS

Smith-Corona

OFFICE EQUIPMENT

Featuring

PORTABLE TYPEWRITERS

Sales — Rentals — Service

Lloyd's Business Machines

35 N. American

HO 4-0340

Hotel Stockton

STOCKTON, CALIFORNIA

Air Conditioned Throughout



BEFORE THE GAME
RENDEZVOUS IN THE

**Valley's Famous
Delta and Pioneer Rooms**

AFTER THE GAME
ENJOY A HOT SNACK

In the Coffee Shop

FOR DEPENDABLE GOODNESS

Webb's Bakery
& DELICATESSEN

PACIFIC AT ALPINE

STOCKTON

GOOD LUCK

JOHN KESSEL
Rental Properties

Telephone HO 6-7748

3138 PACIFIC AVE.

STOCKTON

THE VALLEY BOWL

PRESENTS

COLLEGE OF THE PACIFIC

VERSUS

WASHINGTON STATE

PACIFIC MEMORIAL STADIUM

STOCKTON, CALIFORNIA

Saturday, October 29, 1955

Kickoff 8:00 P.M.

This official program is published by William Scanlan, under the editorship of Pacific Athletic News Service Carroll R. Doty, director. Pacific photography by Don Wheeler and Len Covello. Programs may be purchased at each stadium gate. Printed in Stockton by Simard Printing Company.



DR. ALDEN E. NOBLE
Director
Pacific Marine Station



DR. ROBERT E. BURNS
President
College of the Pacific

BIOLOGY BY THE SEA

By ARTHUR FAREY

The Pacific Marine Station of Biological Sciences is a C.O.P. specialty known throughout the scientific world. Only a few American colleges and universities have such installations to support life science studies.

Located at Dillon Beach on the Marin County coast line of the Pacific ocean, the Pacific Marine Station was developed and is directed by research scientist, Dr. Alden E. Noble, chairman of the Pacific Department of Zoology. Research projects are carried on year round at the station, and large classes of C.O.P. students study there.

What is the importance of a Marine Station? The ocean, Dr. Noble instructs, is the original source of all life on this earth. Even after millions of years

of the evolution of life forms, by far the greatest number and types of animal life are found in the sea and along its shores. At a marine station an amazing variety of species can be studied in their native habitats, or taken into the laboratories to be cultured and classified. The basic processes in the growth and development of all animal forms are most vividly illustrated by many of these marine organisms.

The Pacific Marine Station includes laboratories, libraries, one of the most extensive marine museum collections on the coast, and dormitory facilities. A 36 foot exploration and specimen collecting boat, the Bios Pacifica, is equipped with all types of gear for gathering specimens. A tremendous variety of natural conditions are found close to the Marine Station: sandy beaches, rocky



Pacific Marine Station
students collecting
plankton near Dillon Beach.



Examining the days
"catch" in a marine
station laboratory.

coast line, enclosed bays, open ocean, mud flats, and submerged reefs. Each of these conditions supports a wide variety of characteristic life.

Many outstanding scientists come from other institutions to teach at the Marine Station, along with members of the Pacific faculty. Research men come here for original investigation. Several obscure species of marine animals have been discovered, and classified for the first time, at the

Pacific Marine Station. One of them, to use his scientific name, is *Benedina noblei*. Yes, his discoverer named him for director Noble.

Now in production is a full color and sound motion picture telling the story of the Pacific Marine Station and illustrating the fascinating sea life studied there. Showings of the film may be booked through the C.O.P. office of Public Relations.

Remember! Next Week The TIGERS Meet U. C. L. A.

PACIFIC MEMORIAL STADIUM
— 2:00 P. M. —

Tickets Are Now On Sale At All Agencies
STOCKTON

Ward Tyler's Sports Shop, 145 E. Weber
College Pharmacy, 2353 Pacific Avenue
Turner Hardware, American and Weber
Chet's Sporting Goods, 148 N. Wilson Way
Moradians Clothiers, 1905 Country Club Blvd.
Blaney & Speckens, 27 S. El Dorado
College of the Pacific Athletic Department
Telephone HOward 4-8129

OTHER COMMUNITIES

Squire Clothiers in Lodi
Valley Sporting Goods in Modesto
Manteca Feed and Supply in Manteca
Roos Bros. in Sacramento
Turner Hardware in Tracy
Strand Bros. Hardware in Escalon
The Wardrobe in Oakdale
Hill's Hardware in Linden

2 - More Frosh Games - 2

November 5

SAN JOSE FROSH

MEMORIAL STADIUM AT 11:00 A. M.

November 12

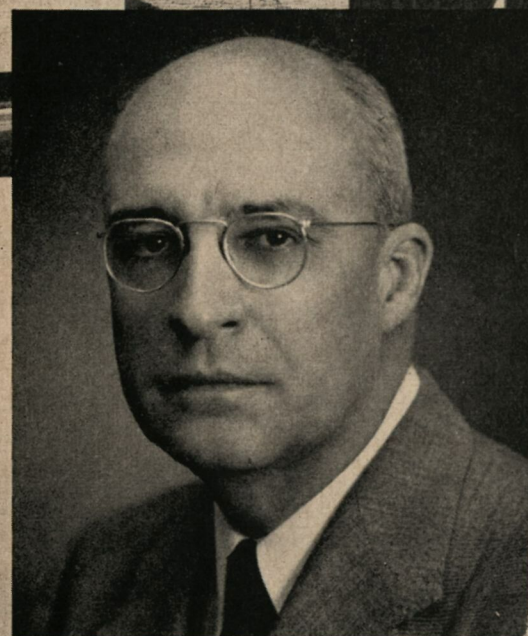
S. F. STATE FROSH

BAXTER STADIUM AT 2:00 P.M.

The S.J.S. Frosh game is free with your
UCLA ticket.

The S. F. State Frosh game is a great
entertainment value for only \$1.00.

WSC



C. Clement French
PRESIDENT



STUDENT UNION



HOLLAND LIBRARY

WASHINGTON STATE COLLEGE....

The State College of Washington, affectionately known to thousands of graduates over the years as "State" or "Washington State" is a land grant college. The school was established in 1890 under the provisions of two federal laws, the Morrill and Hatch Acts, and action by the first Washington State Legislature.

The State College of Washington actually opened its doors on Jan. 13, 1892, in a small brick building known as "The Crib" with a total of 16 students and a faculty of five. Present enrollment is more than 5,000 in one of the most modern college plants to be found in the nation.

The college is located at Pullman, in Whitman county, a town of about 6,500 inhabitants in the heart of one of the richest agricultural regions in the state. The college is served by the Northern Pacific and Union Pacific railways, excellent highways and West Coast Airlines.

The campus is located on a hill overlooking the rich farming areas of the Palouse river and covers more than 250 acres while the college farm includes 970 acres stretching far to the east of the college campus.

There are more than 90 buildings on the campus for classrooms, laboratories, offices, dormitories and other services. These are linked by excellent paved roads and walks. The State College

has equipped its laboratories with the latest in scientific facilities for all types of teaching.

Facilities for athletic teams are among the finest to be found anywhere. The Stadium at Rogers Field has a capacity of 25,000 seats for football games, and includes a quarter mile cinder track with a 220-yd. straightaway. The Stadium is located adjacent to the J. Fred Bohler gymnasium for men with swimming pool, basketball court with a seating capacity of 8,000 and all modern physical education facilities.

Bailey Field contains two of the finest grassed baseball diamonds in the Pacific Coast conference and just east of Bailey Field is a nine hole golf course owned and maintained by the Associated Students of the State College of Washington.

Known and respected throughout the nation for the quality of its athletic teams, Washington State representatives in athletics are known as Cougars. A live cougar "Butch IV" lives in a special \$6,000 cage near Rogers Field and exemplifies that fighting spirit of Washington State teams.

One of the most rapidly growing institutions in the Northwest, if not the entire nation, Washington State expects a Freshman enrollment this year of nearly 2,500 students. This will equal nearly 50 per cent of the present student body.

Welcome to
WEBERSTOWN

PLANNED FOR YOUR HAPPINESS

Now Open

Just Across The Bridge On Pacific Avenue

WEBERSTOWN DEVELOPMENT CO.



Burnham Bros.
HOME FURNISHINGS
FLOOR COVERINGS
DRAPES AND SHADES
WEDGEWOOD RANGES
WESTINGHOUSE AND KELVINATOR
ELECTRIC APPLIANCES

152 Lincoln Center
Telephone GR 7-2902

417-423 E. Weber Avenue
Telephone HO 5-5913

SIGNS

by



708 E. MARKET ST.

STOCKTON, CAL.

Telephone HO 5-2645

QUALITY — DESIGN — SERVICE

BERT RUSS General Contractor

CUSTOM BUILT HOMES
Complete Line of Builders Materials

Telephone HO 3-9415

2455 Waterloo Road — Stockton

SUCCESS, TIGERS

From



ALAN SHORT

Your

State Senator

THE ELECTRIC SPORTS TIMER
USED IN THIS GAME
IS ANOTHER
FLYING "A" SERVICE



TIDE WATER ASSOCIATED OIL CO.

PLAY BALL WITH FLYING "A"



Pacific Marching Band

HALF-TIME WITH THE C.O.P. BAND

"Presenting the nationally famous 77-piece College of the Pacific Marching Band . . ." These are the words which introduce one of the outstanding musical organizations on the Pacific Coast. Playing continuously while on the field, the band and its talented young director, Art Corra, have spent countless hours in preparation for the half-time stunt you will see tonight.

Mathematically speaking, the bandsters spend an hour and a half in practice for each minute on the field. To have the football squad match this would mean 90 hours of practice before each game! The time used by the band is well spent in mastering the special arrangements and intricate drills which have brought them wide acclaim. These extremely difficult arrangements, combined with continuous playing, complex formations and clever dances account for the fact that members of the Pacific Band receive P.E. credit for their activities!

With Director Corra and assisting in organization and performance of the COP Band are Drum Major Don Oliver, Senior Manager Mark Blinoff, Equipment Manager Phil Laing, Dance Director Betty Hackett, Baton Twirler Bob Stegman and Student Director Ray Lipper.

Light and color will be the feature of the half-time performance by the band tonight. With the stadium darkened bandsmen will treat the fans to precision formations illuminated only by bandsmen themselves, with colored lights on hats and shoes. Dancing routines, too, will be apart of the maneuvers.

The program will include:

"Just One of Those Things"

"Night and Day"

"I Get a Kick Out of You"

"Anything Goes"

"Blow, Gabriel, Blow"

"Men of Ohio" — a March.

THE GAME

By BILL BONI

Sports Editor, Spokane Spokesman-Review

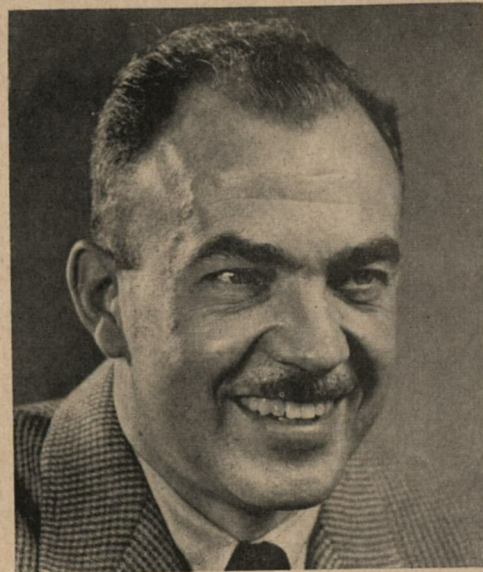
Washington State College will be trying to make it three in a row over College of the Pacific Tigers in Memorial Stadium tonight, and will be making that try with:

1. An all-senior line, virtually all of them veterans of the last two WSC wins, by 26-20 at Stockton in 1953, by 18-0 at Spokane in 1954.
2. A backfield which, through breaks and mid-season development, is a combination of veterans and sophomores.
3. A split-T offense which has replaced the blend of T and single-wing which head coach Al Kircher used the three previous seasons.

The Cougars got caught in a meat-grinder on two of their first three Saturdays this season. The big Los Angeles Coliseum proved the usual bugaboo as they opened with a 50-12 loss to Southern California in which, to cite just one instance, WSC got such bad breaks as this: A WSC punt bounced backward so high and hard it went over the heads of the covering WSC linemen, and a USC Trojan scooped up the ball and ran it back for a touchdown.

Then followed a 13-0 loss to Kansas which—to prove the old axiom about an ill wind, etc.—ended a 17-game losing streak for the Jayhawks. Washington State then came home to Pullman for the first time, only to run into a UCLA team which, rebounding from its one-touchdown loss to Maryland the week before, functioned almost perfectly in running up a 55-0 count.

That might have demoralized better teams than WSC. But it didn't. The Cougars had enough bounce of their own to come back for a 20-20 tie with California, and followed that up a week later by beating Idaho, their old nine-mile-away neighbor, 9-0, to avenge a 10-0 loss of the year before

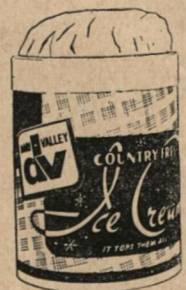


Bill Boni

which had been Idaho's first win in the series in 29 years.

Men to watch in Cougar uniform tonight? If you like line play, keep your eye on fellows like big Tom Gunnari, who plays guard (No. 67) on offense and tackle on defense. Jerry Brockey, no towering giant but a tough tackle (No. 75); Doug Leifeste, a converted guard doing a bang-up job in his first try as a center (No. 53); Vaughan Hitchcock, star heavyweight wrestler who now wrestles down halfbacks from his guard spot (No. 63).

At quarterback, if he's recovered from a spell of hobbling injuries, will be lean Bobby Iverson (No. 20), a good passer and good runner on the option play. His ranking replacement, also a senior, is Frank Sarno (No. 42), the human firebug and ex-Marine. Billy Kramer (No. 44) isn't very big as fullbacks go, but he can scoot, and Rey Alvarado (No. 22) has proven consistently the fastest of the halfbacks and a dangerous man on kick returns.



"TOPS THEM ALL"

Served

At the END ZONE
and at KERN'S

540 S. Pilgrim

HO 5-1303

— NOW OPEN —

THE NEW

PACIFIC COFFEE SHOP

"On the Miracle Mile"

Delicious Meals — Hamburgers
Tamales — Enchiladas

SEE OUR NEW BANQUET ROOM

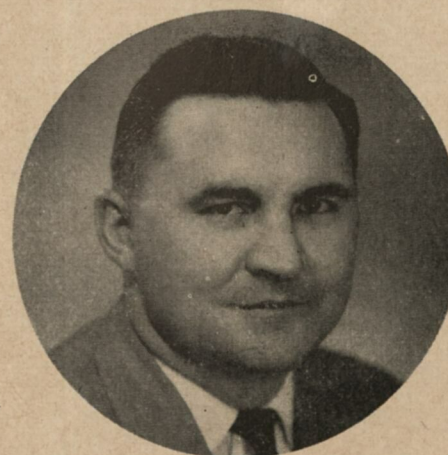
Plenty of Free Parking
2041 PACIFIC AVENUE



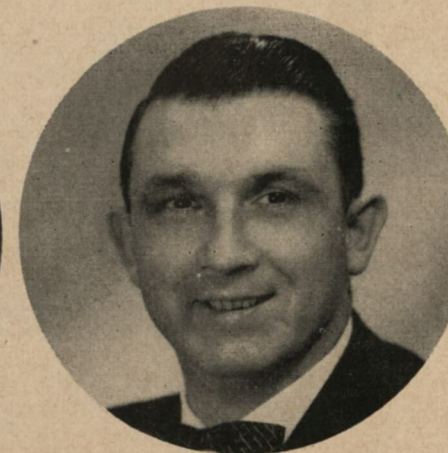
ALTON KIRCHER
Head Coach



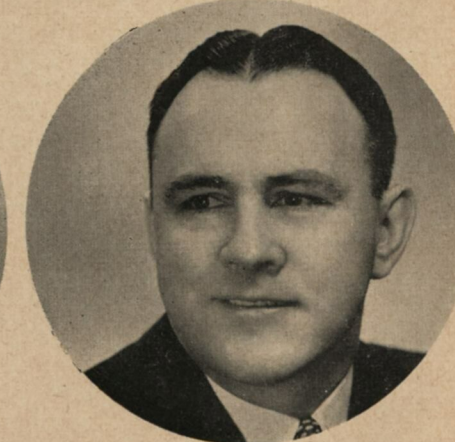
BILL ACHESON
Sr. Mgr.



MIKE SCARRY
Line



DALE GENTRY
Ends



DAN STAVELY
Frosh

WSC Coaches

Pepsi-Cola

refreshes
without
filling

Light, dry
(not too sweet),
reduced in calories.
Have a Pepsi.



the light
refreshment



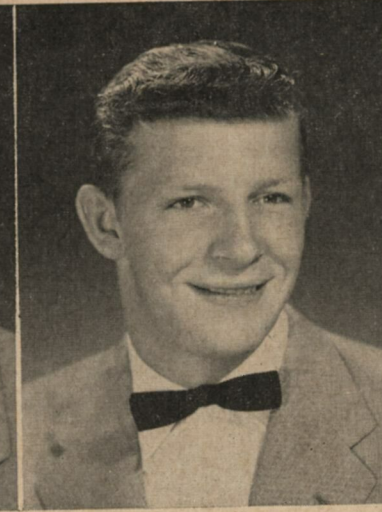
PEPSI-COLA BOTTLING CO., INC. OF STOCKTON

W
A
S
H
I
N
G
T
O
N

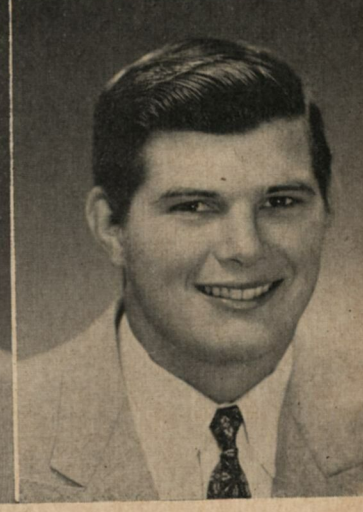
S
T
A
T
E



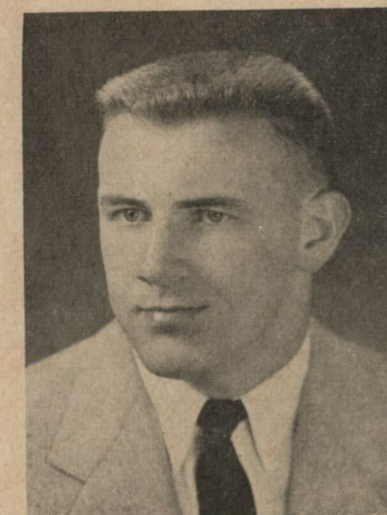
Norm Veach, e



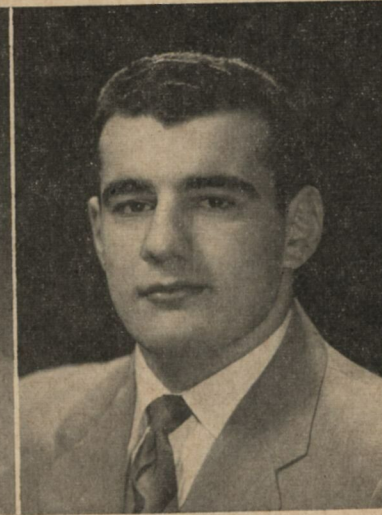
Bob Miller, f



Jack Inions, t



Larry Weir, g



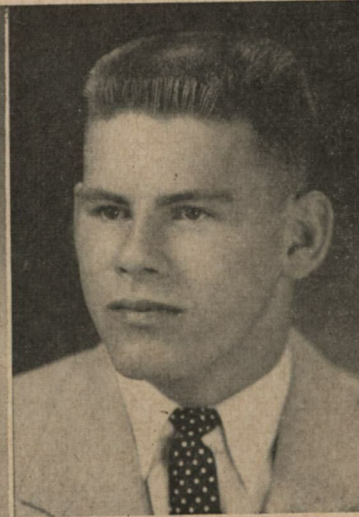
Jim Welch, t



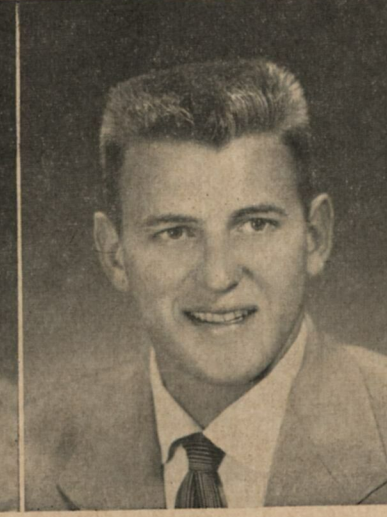
Rey Alvarado, h



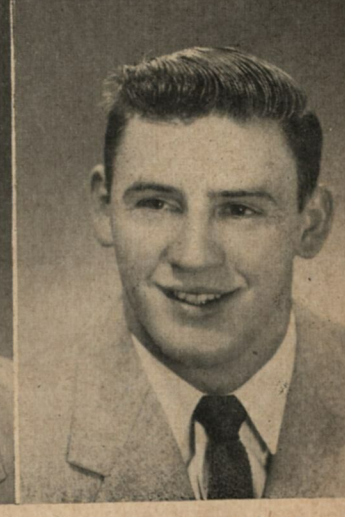
Burl Grinols, t



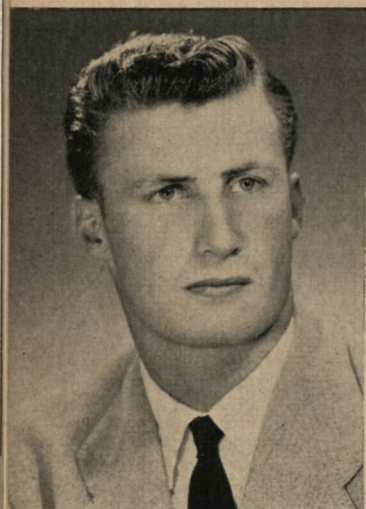
Dwight Hawkes, q



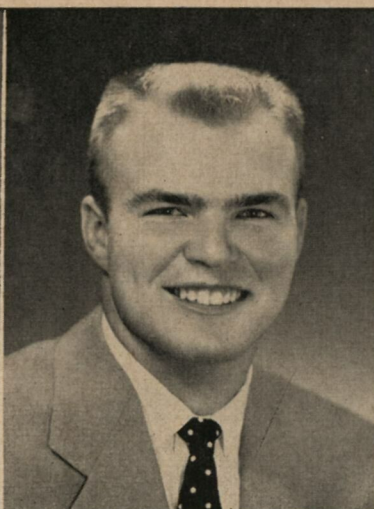
Doug Riggs, e



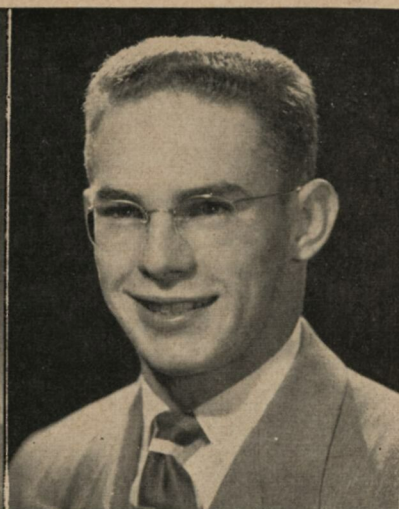
Dennis Rath, f



Jim Hagerty, h



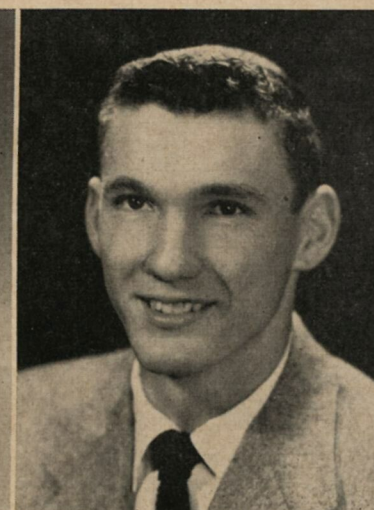
Ron Jacobson, t



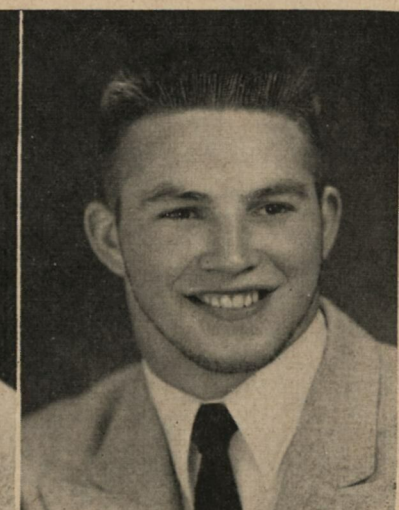
Bill Kramer, f



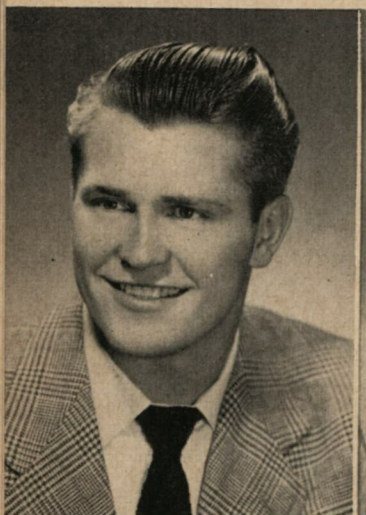
Dewey Keith, h



Pete Toomey, e



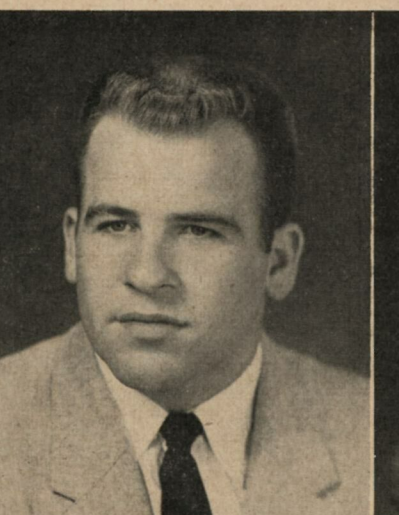
Gene Baker, g



Jerry Brockey, t



Frank Sarno, q



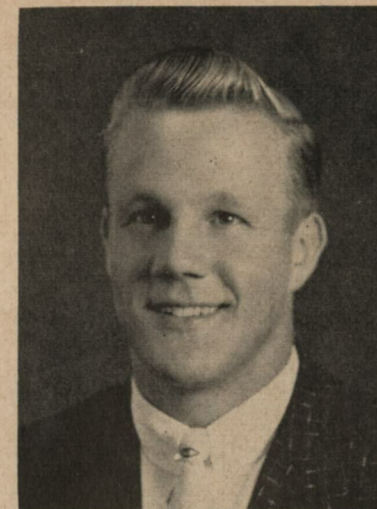
Doug Leifeste, c



Dick Doerfliner, e

WASHINGTON STATE

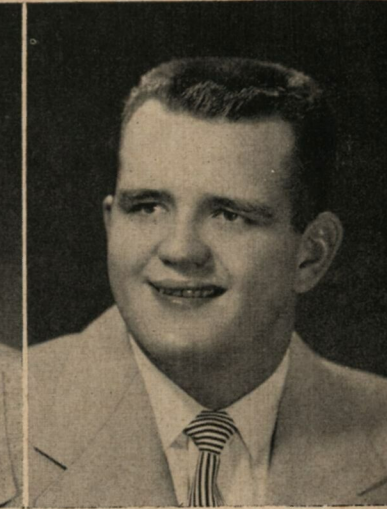
COUGARS



Arnie Pelluer, e



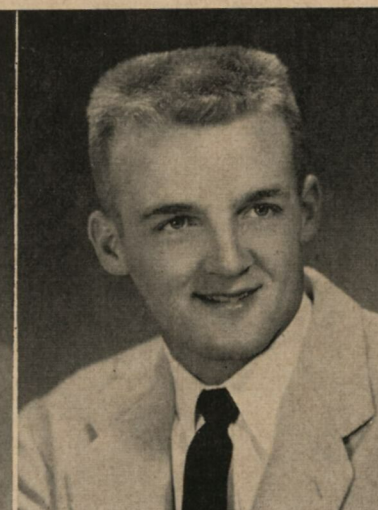
Everett Gust, h



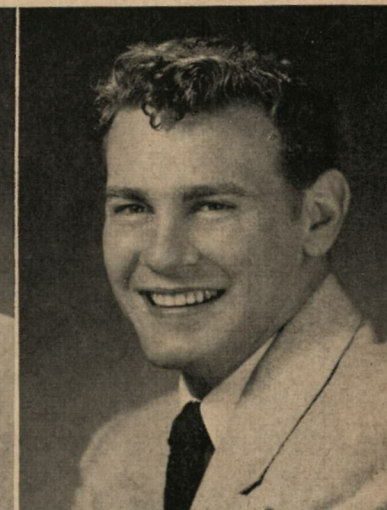
Tom Gunnari, t



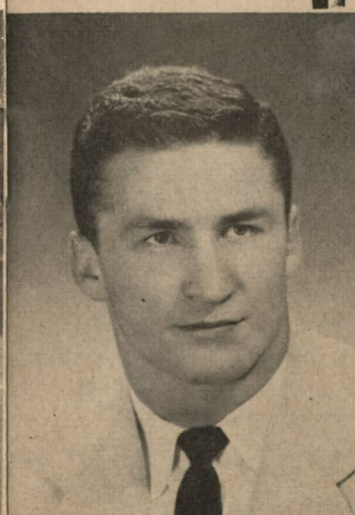
Roger Glazbrook, e



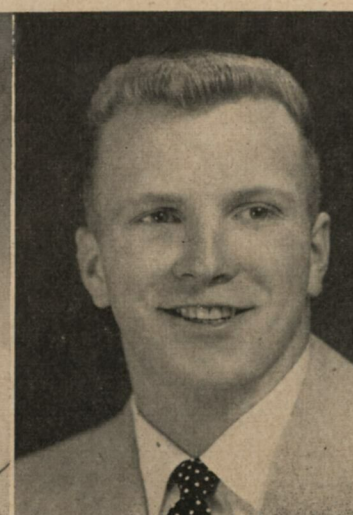
Bob Iverson, q



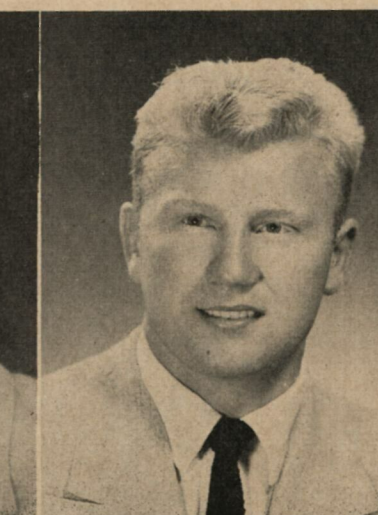
Ken Gardner, t



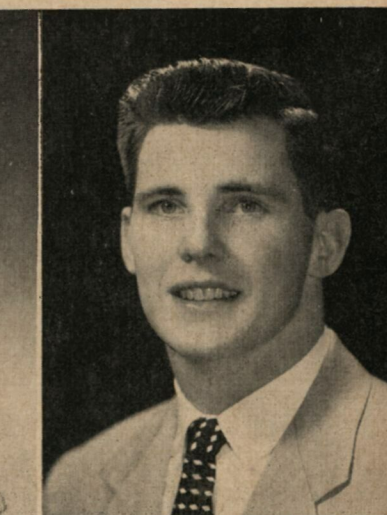
Vaughn Hitchcock, g



Bill Steiger, h



Morris Pixley, c



Russ Quackenbush, e

Washington State College

1955 Football Roster

No.	Name	Pos.	Age	Ht.	Wt.	Class	Exp.	Home Town
10	Dwight Hawkes	Q	20	6:0	180	Soph.	Frosh	Seattle
20	Bob Iverson	Q	22	6:0	170	Senior	2-V	Puyallup
22	Rey Alvarado	H	20	5:11	205	Soph.	Frosh	Los Angeles, Cal.
23	Everett Gust	H	20	5:11	175	Junior	1-V	Tacoma
24	Dewey Keith	H	21	6:0	185	Senior	2-V	Wenatchee
26	Clarence Coplin	H	19	5:8	170	Soph.	Frosh	Seattle
27	Ed Clark	H	21	5:11	175	Junior	1-V	Wallowa, Ore.
31	Jim Hagerty	H	23	6:0	180	Senior	2-V	Pasadena, Cal.
33	Dennis Rath	F	22	6:0	190	Senior	2-V	Grandview
35	Bill Steiger	H	20	6:0	185	Soph.	Frosh	Olympia
37	Dick Temby	H	20	6:0	185	Soph.	Frosh	Tonasket
39	Floyd Richmond	H	20	5:10	160	Soph.	Frosh	Spokane
40	Benny Milam	F	20	6:0	185	Soph.	Frosh	Pasco
42	Frank Sarno	Q	25	5:10	200	Senior	2-V	Somerville, Mass.
44	Bill Kramer	F	21	5:10	180	Senior	1-V	Clarkston
46	Bob Miller	F	21	6:2	210	Junior	1-V	Downey, Cal.
50	Morris Pixley	C	22	6:0	210	Senior	2-V	Spokane
51	Dick Doerflinger	C	20	6:0	190	Soph.	Frosh	Seattle
52	John Clark	C	20	6:1	195	Junior	1-V	Wallowa, Ore.
53	Doug Leifeste	C	22	5:11	205	Senior	2-V	Sunnyside
60	Eugene Baker	G	20	5:11	195	Soph.	Frosh	Buckley
62	Burl Grinols	G	20	6:0	205	Junior	1-V	Kelseyville, Cal.
63	Vaughan Hitchcock	G	21	6:0	195	Senior	2-V	Hayward, Cal.
65	Terry Yeager	G	19	5:10	205	Soph.	Frosh	Olympia
66	Larry Weir	G	21	5:11	190	Soph.	Frosh	Spokane
67	Tom Gunnari	G	23	6:1	220	Soph.	Frosh	Kelso
69	Gayle Strait	G	21	5:11	185	Soph.	Frosh	Spokane
70	Jack Domit	T	20	6:0	215	Soph.	Frosh	Spokane
72	Ron Jacobson	T	21	6:2	200	Soph.	Frosh	Mullan, Idaho
73	Ken Gardner	T	20	5:11	190	Soph.	Frosh	Richland
74	Bob Anacker	T	20	6:0	186	Soph.	Frosh	Bellevue
75	Jerry Brockey	T	21	5:8	205	Senior	2-V	Seattle
76	Jim Welch	T	21	5:10	200	Senior	2-V	Seattle
77	Jack Inions	T	21	6:1	215	Junior	1-V	Yakima
78	Robert Mock	T	21	6:2	200	Junior	1-V	Lynden
79	Bill Bugge	T	19	6:2	190	Soph.	Frosh	Olympia
82	Ray Taipale	E	20	5:11	175	Soph.	Frosh	Olympia
83	Doug Riggs	E	21	6:2	195	Senior	2-V	Seattle
84	Arnie Pelluer	E	21	6:3	215	Senior	2-V	Bremerton
85	Russ Quackenbush	E	21	6:3	195	Senior	2-V	Seattle
86	Lew Turner	E	20	6:2	195	Soph.	Frosh	Spokane
87	Pete Toomey	E	21	6:2	185	Senior	1-V	Los Angeles, Cal.
88	Norm Veach	E	19	6:2	195	Soph.	Frosh	Spokane
89	Roger Glazbrook	E	21	6:3	210	Soph.	Frosh	Los Angeles, Cal.

STOCKTON LINCOLN-MERCURY

SALES and SERVICE

"Where Trade-In Allowance Makes A Difference"

640 N. El Dorado St. - HO 4-7671

Stockton

A. Teichert & Son, Inc.

Engineering Contractors

Grading and Paving

Sacramento - - - - Stockton

Ernie Reed
MEN'S CLOTHIER

2105 Pacific Ave. — On the Miracle Mile

College Book Store

A Complete Student Supply Store

Serving the Students of

COLLEGE OF THE PACIFIC

— and —

STOCKTON COLLEGE

Kensington Way at Stadium Drive

(U. S. Post Office Sub Station No. 6)

So They Say

His face lit up on his first visit to Bright Spot Electric . . .

"Such courtesy and service is delightful!"

BRIGHT SPOT
Electric Co.
"EVERYTHING ELECTRICAL"
SALES-SERVICE-REPAIRS
309 E. WEBER AVE. STOCKTON, CALIF.



GAINES' MARKETS

STOCKTON'S FINEST FOOD STORES

Locally Owned

Stores No. 2 — 2244 Sharps Lane
Store No. 3 — 3314 N. Delaware
Store No. 4 — 4115 N. El Dorado
Store No. 5 — 2112 Pacific Avenue
Store No. 6 — 106 Lincoln Center
FINEST QUALITY — LOWEST PRICES

Lugo's Pizzeria

ACCLAIMED THE FINEST
BY PEOPLE WHO KNOW

1700 S. El Dorado St., Stockton

Rough Rider Slacks — Alligator
Raincoats — Crosby Square Shoes
Interwoven Socks — Arrow Shirts

MORADIAN'S

Casual Cloths For Men and Boys

OFFICIAL C.O.P. TICKET AGENCY

Telephone HO 3-6815

1905 Country Club Blvd. Stockton

Radio Tow Service

Ray Howeth

DAY and NIGHT — 24-HR. SERVICE
Our Truck Dispatched by Radio

Wrecks Rebuilt — Auto Storage
General Auto Repairing
Body and Fender Work
Auto Customizing

Telephone HO 5-8053

930 E. Charter Way — Over Subway

CELLO PACK SHIRTS



1136
West
Fremont

HO 3-7749

Complete Laundry and Cleaning Service
For The Entire Family

EDDIE'S

COFFEE SHOP

"WE NEVER CLOSE"

EL DORADO AT CHARTER WAY

Insurance — Bonds Real Estate

Geo. H. and Don MARLETTE

808 N. HUNTER STREET
STOCKTON

Office Phone
HO 4-9863

Res. Phone
HO 4-3389

WASHINGTON STATE COLLEGE

85—RUSS QUACKENBUSH

76—JIM WELCH

67—TOM GUNNARI

53—DOUG LEIFESTE

63—VAUGHN HITCHCOCK

75—JERRY BROCKEY

84—ARNIE PELLUER

20—BOB IVERSON

35—BILL STEIGER

22—REY ALVARADO

33—DENNIS RATH

PROBABLE STARTING LINE-UP

Position

LE

LT

LG

C

RG

RT

RE

QB

LH

RH

FB

COLLEGE OF THE PACIFIC

A. D. WILLIAMS—82

GENE CRONIN—70

NEVEN HULSEY—73

JACK O'ROURKE—64

GALEN LAACK—71

JOHN NISBY—78

JOHN THOMAS—80

JUNIOR REYNOSA—42

DEWEY TOMPKINS—41

KEN SWEARINGEN—44

LYNN SWANSON—50

WASHINGTON STATE

10 Hawkes, q	46 Miller, f	74 Anacker, t
20 Iverson, q	50 Pixley, c	75 Brockey, t
22 Alvarado, h	51 Doerflinger, c	76 Welch, t
23 Gust, h	52 Clark, c	77 Inions, t
24 Keith, h	53 Leifeste, c-g	78 Mock, t
26 Coplin, h	60 Baker, g	79 Bugge, t
27 Clark, h	62 Grinols, g	82 Taipale, e
31 Hagerty, h	63 Hitchcock, g	83 Riggs, e
33 Rath, f	65 Yeager, g	84 Pelluer, e
35 Staiger, h	66 Weir, g	85 Quackenbush, e
37 Temby, h	67 Gunnari, g	86 Turner, e
39 Richmond, h	69 Strait, g	87 Toomey, e
40 Milam, f	70 Domit, t	88 Veach, e
42 Sarno, q	72 Jacobson, t	89 Glazbrook, e
44 Kramer, f	73 Gardner, t	

OFFICIALS

LEE EISAN
Referee

JIM LINEBERGER
Umpire

MILTON VUCINICH
Head Linesman

CHARLES BROWN
Field Judge

T. M. FITZPATRICK
Back Judge

JAMES DARR
Alternate

PACIFIC

41. Tompkins, rh	56. Yamamoto, c	71. Laack, rg
42. Reynosa, qb	57. Perry, rh	72. Lee, lg
43. Girard, lh	58. Cornell, K., re	73. Hulsey, lg
44. Swearingen, rh	59. Funston, fb	74. Striegel, lt
45. Whittier, qb	60. Conner, re	75. Haynes, le
46. Chatfield, qb	61. Linn, re	77. Montabana, rt
47. Daniel, le	62. Dattola, fb	78. Nisby, rt
48. Cornell, D., lh	63. Williams, rg	79. Strong, le
49. Schweitzer, lh	64. O'Rourke, c	80. Thomas, re
50. Swanson, rh	65. Maron, rt	81. Cillins, lt
51. Campbell, lh	66. Lindo, fb	82. Williams, le
52. Allerdice, rh	67. Cahill, c	83. Fairley, rt
53. Bossert, fb	68. Ortega, lg	84. Weaver, lt
54. Green, fb	69. Parks, rg	85. Banducci, c
55. Jacobs, qb	70. Cronin, lt	86. Zolezzi, rt

Campus Lane



EXCLUSIVE HEADQUARTERS

For Stockton and Vicinity
(Across from the Campus)

3232 PACIFIC STOCKTON

IN STOCKTON IT'S

MARTIN'S JEWELERS

For the Finest In Jewelry — Gifts
Watches — Diamonds — Silverware
Home of Elgin, Gruen, Bulova and
Hamilton Watches



BUDGET TERMS

FOR FACTORY TRAINED
TECHNICIANS

Days — Nights — Sundays

DIAL HO 4-7755

California Television Service Co.

Serving Stockton Area 20 Years

Bob Moreing and Bill Wiefel, Owners

929 N. YOSEMITE — STOCKTON



TWO
DEPARTMENT
STORES TO
SERVE YOU

UPTOWN
and
ON THE
AVENUE

Gaines' Variety & Hardware

2 Convenient Locations

STORE No. 3 — 3332 N. DELAWARE

STORE No. 4 — 4155 N. EL DORADO

— Open Eveings Until 9:00 P. M. —
OVER 20,000 ITEMS TO BUY

We Carry EVERYTHING but the Janitor

Disinfectants — Soaps — Cleaners
Wax — Floor Polishers — Deodorants
Janitorial Supplies



Telephone
HO 3-3885
24-Hr. Service
830 E. Hazelton
Stockton



Greetings and Good Luck

— From —

LEROY JOHNSON

— YOUR —

Member of Congress

ELEVENTH CALIFORNIA DISTRICT

FOOTBALL Radio Station KXOB

Is Proud To Have Been Selected To Once Again Bring You The Complete

FLYING "A" SPORTCASTS of C.O.P. FOOTBALL

THROUGHOUT THE 1955 SEASON

When you can't possibly see the games in person
listen to them over your Spot for Sports . . . 1280 . . .

ANOTHER FLYING 
SPORTCAST

**Let's Go
Pacific**



DELTA PUMPS

Stockton Armature & Motor Works

Mingle and Meet
With the College Crowd

"ON THE CAMPUS"

The End Zone

The Spot to Relax
SANDWICHES — REFRESHMENTS

At Our Fountain In The
STUDENT UNION BUILDING
C.O.P. CAMPUS

HOUSEWARE — PAINT — HARDWARE
SPORTING GOODS — EVERYTHING FOR YOUR FAVORITE SPORT

TURNER
HARDWARE  **COMPANY**

Modesto — Lodi — Manteca — Oakdale — Tracy — Escalon — Merced
WEBER AVE. AND AMERICAN STS. — STOCKTON

College of the Pacific

1955 Football Roster

No.	Name	Pos.	Age	Ht.	Wt.	Exp.	Class	Home
41	Dewey Tompkins*	RH	25	5:9	149	COP-1	Sr.	Lakeworth, Fla.
42	Junior Reynosa	Q	20	5:8	168	Stkn. Coll.	Jr.	Stockton
43	J. B. Girard	LH	21	5:8	165	COP-1	Jr.	Galt
44	Ken Swearingen*	RH	21	5:9	172	COP-1	Sr.	Redondo Beach
45	Del Whittier	Q	19	6:1	185	Yuba JC	Soph.	Oroville
46	Chuck Chatfield	Q	19	5:10	170	Frosh	Soph.	Sacramento
47	Stan Daniel	LE	20	5:11	176	COP-1	Jr.	Merced
48	Don Cornell**	LH	21	5:11	168	COP-2	Sr.	Inglewood
49	Jerry Schweitzer	LH	19	6:1	177	Stkn. Coll.	Soph.	Hawthorne
50	Lynn Swanson*	RH	20	5:11	170	COP-2	Sr.	Turlock
51	Gene Campbell	LH	20	6:0	188	Stkn. Coll.	Jr.	Stockton
52	Lee Allerdice	RH	23	5:9	173	Pasadena JC	Soph.	Snohomish, Wash.
53	Don Bossert	FB	20	5:11	185	S. Rosa JC	Jr.	Lodi
54	Tom Green	FB	19	5:10	174	COP-1	Jr.	Long Beach
55	Bill Jacobs**	Q	21	5:9	160	COP-2	Sr.	Redding
56	Mich Yamamoto	C	19	6:1	198	Frosh	Soph.	Torrance
57	Tom Perry	RH	21	6:2	186	COP-1	Jr.	Oakdale
58	Ken Cornell	RE	20	6:0	178	El Camino JC	Jr.	Inglewood
59	Farrell Funston	FB	19	6:1	201	Sacramento JC	Soph.	Dixon
60	Clyde Conner	RE	22	6:3	195	None	Sr.	South San Francisco
61	Roger Linn**	RE	21	6:0	196	COP-2	Sr.	Ukiah
62	Emil Dattola	FB	21	5:11	175	COP-1	Sr.	Temple City
63	Buzz Williams**	RG	21	6:0	183	COP-2	Sr.	Walnut Creek
64	Jack O'Rourke*	C	19	6:1	200	COP-1	Jr.	Burkank
65	Bob Maron*	RT	23	6:0	204	COP-2	Sr.	Los Angeles
66	Ernie Lindo*	FB	20	6:1	191	COP-1	Sr.	Pasadena
67	Ben Cahill*	C	21	5:9	192	COP-2	Sr.	South San Francisco
68	Tony Ortega	LG	20	5:10	185	Stkn. Coll.	Jr.	Stockton
69	Ben Parks	RG	21	5:9	185	Stkn. Coll.	Jr.	Hollister
70	Gene Cronin**	LT	21	6:2	211	COP-2	Sr.	Sacramento
71	Galen Laack*	RG	24	5:11	215	COP-1	Jr.	Abbotsford, Wis.
72	Bob Lee*	LG	19	5:11	196	COP-1	Jr.	Mt. Diablo
73	Neven Hulsey**	LG	21	6:0	208	COP-2	Sr.	Santa Monica
74	Bill Striegel	LT	19	6:2	198	Frosh	Soph.	Chico
75	Darrell Haynes*	LE	21	6:0	197	COP-1	Sr.	Stockton
77	Frank Montabana*	RT	20	5:11	198	COP-1	Jr.	San Francisco
78	John Nisby*	RT	19	6:0	220	COP-1	Jr.	Stockton
79	Garry Strong	LE	22	6:0	188	Frosh	Soph.	Calgary, Can.
80	John Thomas	RE	20	6:5	210	None	Soph.	Richmond
81	Jim Collins	LT	21	6:2	202	COP-1	Sr.	Live Oak
82	A. D. Williams**	LE	21	6:2	200	COP-2	Sr.	Santa Monica
83	Gerry Fairley	RT	21	6:2	205	Frosh	Soph.	Calgary, Can.
84	Floyd Weaver	LT	22	5:11	205	Service	Soph.	Stockton
85	Roy Banducci	C	24	6:2	210	Service	Soph.	Oakdale
86	Dick Zolezzi	RT	19	6:0	220	Stkn. Coll.	Soph.	Linden

*Varsity Letters



SEE THESE MODELS NOW

2-bedroom with attached garage, on your lot	\$5295
2-bedroom, deluxe with hardwood floors, fireplace, attached garage, on your lot	\$7350
3-bedroom with attached garage, on your lot	\$6295
3-bedroom with all-purpose family room, fireplace, attached garage, on your lot	\$9295
1-bedroom duplex with attached garages, on your lot	\$8590
2-bedroom duplex with attached garages, on your lot	\$10,590



PERRY-BUILT

HARMONEY SQUARE is open every day (including Sundays and holidays) from 9 a.m. to 9 p.m.

E. MINER AVENUE at NORTH "F"
HO 5-0254

QUALITY SERVICE
QUALITY LUMBER

RUSE LUMBER COMPANY

Telephone HO 6-6704

302 WEST FREMONT STREET
STOCKTON

Greetings To C.O.P. Tigers
Best of Luck for 1955 Season

KLEIN BROS. BEANS

Sol — Jack — Bud

Telephone HO 4-9458

48 W. Weber Ave. Stockton

PACIFIC CLAY PRODUCTS

Manufacturers and Distributors of
Vitrified Sewer Pipe and Drain Tile
Flue Lining and Chimney Pipe
Face Brick — Ceramicweld

Los Angeles — Oakland — Stockton

Telephone HO 6-8041

2402 S. California Street Stockton

RAY W. STIRM

GENERAL BRICK MASONRY
FIREPLACES — GLASS BLOCKS
STONE WORK

Telephone HO 3-4418

Room 200 — 47 N. Grant Street
Stockton

ELLIS GARAGE

GENERAL AUTO REPAIRING

Telephone HO 4-4909

2226 N. Wilson Way Stockton

THE GAME

By CARROLL R. DOTY

Working on a string of four consecutive wins, the most in a row for a College of the Pacific team since the first four of 1951, the Tigers go after Washington State for number five tonight and you have to go back to 1949 for a Pacific team better than that.

The Cougar from the Palouse have had the whammy on Pacific over a two year period, staging a rally to come from behind for a 26-20 win here in 1953 and taking the Bengals apart, but good, by a 18-0 count in Spokane last fall. They are one of two teams to hold two wins over Coach Jack "Moose" Myers.

The Pac-Cats have been gaining steady momentum since the opening defeat by Stanford and the question has been asked, "Where was the turning point, the spot the Tigers came alive?"

For my money it was early in the second quarter of the Purdue game. The Boilermakers, 225 pound fullback Bill Murakowski ripping off large chunks at a time through the line, drove to the Bengal 23. A 15 yard penalty gave them a first down on the COP eight.

On the first play Murakowski to the three. Then a sterling effort by the Tiger forwards held Purdue on the one foot line and the "super seven" was born. From that point on, Pacific has been a good football team.

The Bengals lost that one at Purdue, 14-7, on a late desperation pass that connected, but all who witnessed the contest knew that the Pac-Cats were on the move. Subsequent performances, and wins, have proved it.

Most football teams, good and bad, feature the big star. It has been much the same at COP, with the likes of Eddie LeBaron, Eddie Macon and Tommy McCormick standing out in the glare of recognition. But this Tiger team is without the big star, not because there isn't one good enough, but because there are too many for one to stand out.

It must cheer the hearts of unsung linemen everywhere to see the acclaim for the Bengal front rank, the "super seven", as a group. They have met, and licked, good lines week after week and deserve to date their nickname.

A. D. Williams hasn't played anything but brilliant football for six weekends in a row. His sidekick, sophomore Johnny Thomas, has an almost unlimited grid future before him off what he's shown so far. Gene Cronin has been a top Tiger for two seasons and even better this year. He never played a better game in his life than last weekend. John Nisby is still one of the hardest hitting customers in the business and "Old John" does it all so well, so consistently he's almost taken for granted. Neven Hulseley is another one

(Continued on Page 28)

Exclusively Yours--

Stockton's FINEST Residence Area

Homes and Homesites

NOTHING DOWN
30-YEAR LOANS

(Qualified Veterans)

MODEL HOMES OPEN

Drive out Pacific Avenue to Rivara Road (Five Mile House), turn left
Follow the signs to beautiful PARK WOODS

Telephone GRanite 7-2688



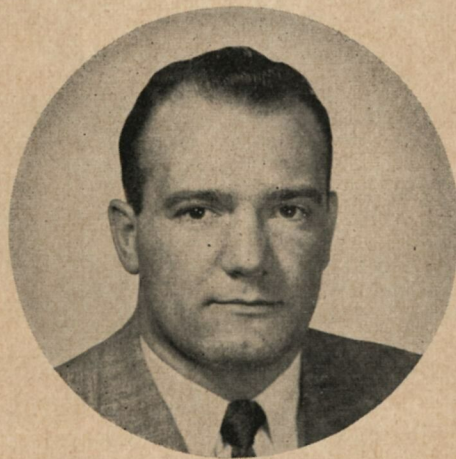


Jack
"Moose"
MYERS

HEAD
COACH
Pacific



JOHN ROHDE
Backs



JOHN NIKCEVICH
Line



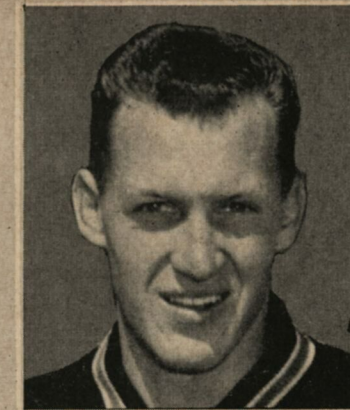
GENE ROWLAND
Frosh



MEL MORETTI
Trainer



Dr. LANGLEY COLLIS
Physician



FRANK BALDWIN
Sr. Mgr.



MASON HOBERG
Asst. Mgr.

Pacific
**TRAINING
STAFF**



BOB WARREN
Asst. Mgr.

AFTER THE GAME
BE SURE TO STOP AT
MIRACLE DRIVE IN
2520 Pacific Avenue
— OR —
HENRY'S ROLLING PIN
2328 Pacific Avenue
FOR FINE FOODS AND A
COMPLETE VARIETY OF DOUGHNUTS

HOBBS-PARSONS CO.

WHOLESALE
FRUITS and VEGETABLES

FRESNO

STOCKTON

ELECTRICIANS

Since 1921

ETS-HOKIN & GALVAN

Industrial — CONTRACTING — Marine
Maintenance — Repairs — Supplies

Telephone HO 5-5621

233 N. San Joaquin Street Stockton

**AMERICAN
AMBULANCE SERVICE**

John Ratto, Jr. — Ray Wells

Telephone HO 6-6869

414 E. Miner Avenue

Stockton

COLLEGE OF THE PACIFIC



Roy Banducci, c



Don Bossert, f



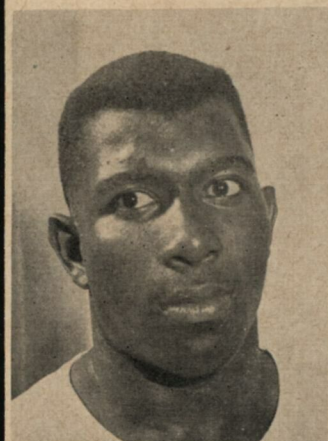
Ben Cahill, c



George Lane, re



J. D. Leitaker, rt



Gene Campbell, lh



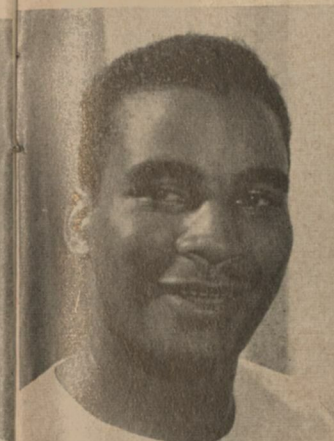
Chuck Chatfield, q



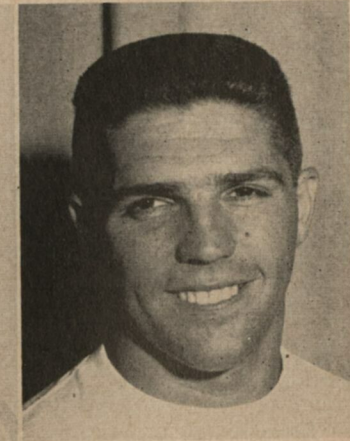
Don Cornell, lh



Gene Cronin, lt



Ernie Lindo, f



Bob Maron, rt



Jim Mastelotto, re



Tony Ortega, lg



Farrell Funston, f



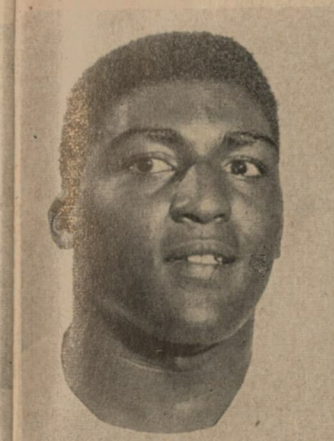
J. B. Girard, lh



Tom Green, f



Darrell Haynes, le



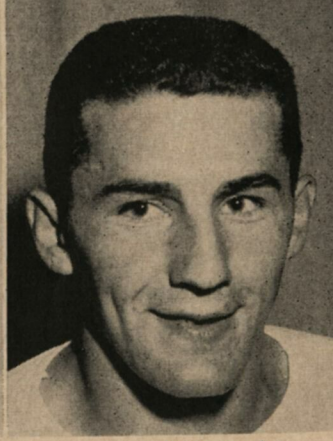
Ben Parks, lg



Matt Russell, re



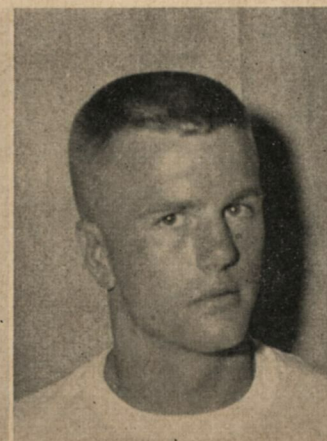
Ron Smith, c



Garry Strong, le



Neven Hulsey, lg



Bill Jacobs, q



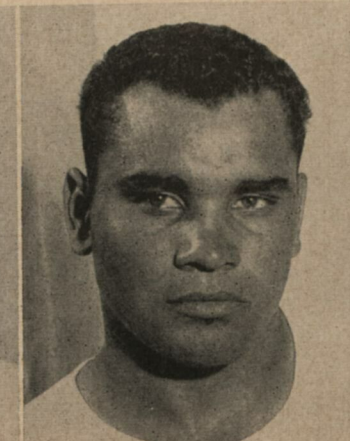
Galen Laack, rg



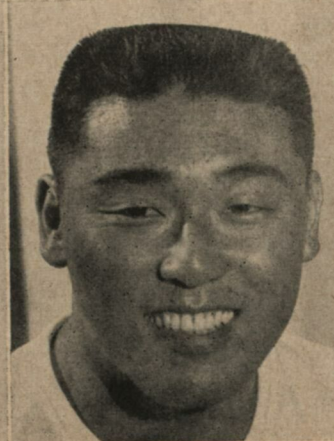
Bob Lee, lg



Bill Swor, rh



Floyd Weaver, lt



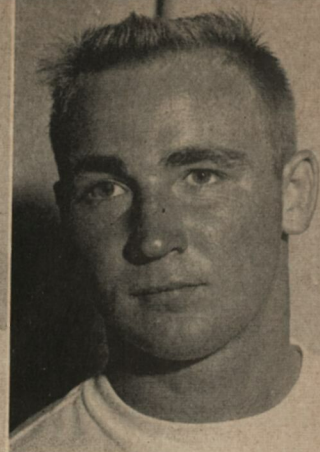
Mitch Yamamoto, c



Dick Zolezzi, rt



Lee Allerdice, rh



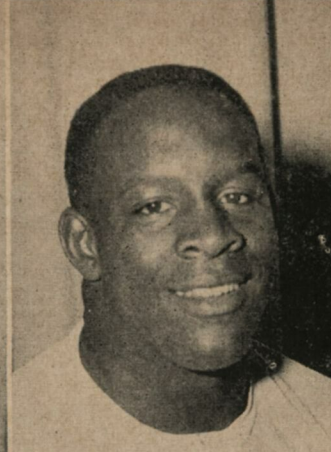
Jim Collins, lt



Roger Linn, re



Frank Montabana, rt



John Nisby, rt



Clyde Conner, re



Ken Cornell, re



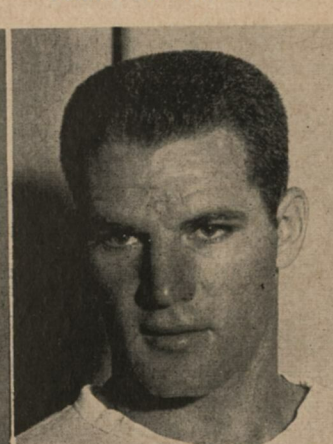
Stan Daniel, le



Emil Dattola, f



Jack O'Rourke, c



Tom Perry, rh



Junior Reynosa, q



Jerry Schweitzer, lh



Harley Davis, le



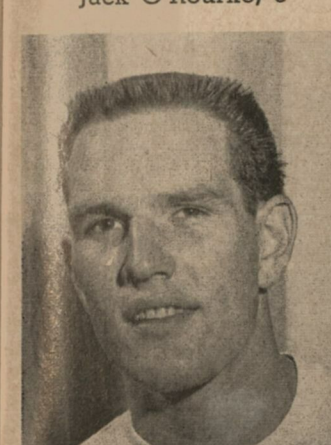
Gerry Fairley, rt



Bob Giardina, lh



Joe Golenor, rh



Bill Striegel, lt



Lynn Swanson, rh



Ken Swearingen, rh



John Thomas, re



Dutch Grose, f



Reuben Gutierrez, re



Rotus Harvey, rg



George King, rt



Dewey Tompkins, rh



Del Whittier, q

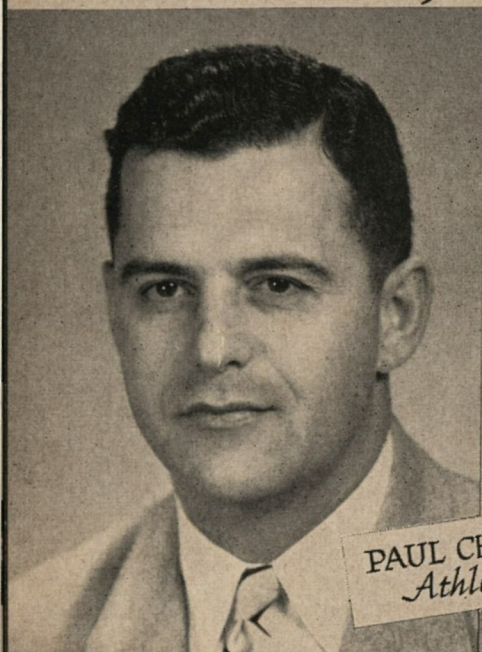


A. D. Williams, le



Buzz Williams, rg

Pacific



PAUL CHRISTOPULOS
Athletic Director



LEFTY STERN
Asst. Athletic Director



CARROLL R. DOTY
News Director

THE GAME

(Continued from Page 21)

who has been a top dog for two seasons and he's better in '55. He played a good one against San Jose.

Galen Laack was the stalwart at right guard until injured against Oregon State and veteran Buzz Williams has stepped into the breach with gusto. For a while it was called the "super six" because the centers alternated, but Jack O'Rourke has started four games and he's a full fledged member with his fine play.

Injuries have cut the backfield potential effectiveness way down, with nearly every one of the top dozen backs missing at least one game. It has been up to the two little guys, Ken Swearingen and Dewey Tompkins, to carry a lot of the offensive load. The pair average less than 160 pounds but they've packed the mail on nearly half of COP's offensive plays.

This evening the Bengals will be out for that first win over WSC and to get that fifth one in a row. The Cougars present a large and rugged club which hasn't realized its potential but could break loose at any time. Which presents the possibility that this will be quite an evening of football.

GO GET 'EM TIGERS

ELMER R. CASTILLO

REALTOR and INSURANCE

Telephone HO 3-4385

38 E. Main Street

Stockton

Patrolmen and Guards
Supplied for Any Occasion

Hannan Police Patrol

Established 1907

E. Upton Brookhart

DANCES OUR SPECIALITY

Telephone Stockton HO 6-9636

Office Open Day and Night

144 N. San Joaquin St., Stockton

QUALITY GUERNSEYS

PRODUCE

QUALITY MILK



Happyholme

**STANLEY ELECTRIC
MOTOR COMPANY**

Licensed Contractors

John W. Oneto, Owner

MOTOR REPAIRING
INDUSTRIAL WIRING

Distributors and Service Agency for
Delco Motors

Telephone HO 4-4035

1520 E. Miner Avenue

Stockton

McCORMICK & BAXTER

Creosoting Company

Pressure Treated Forest Products

Telephone HO 5-5768

1214 W. Washington Street

Stockton

WSC



STAN BATES
Athletic Director

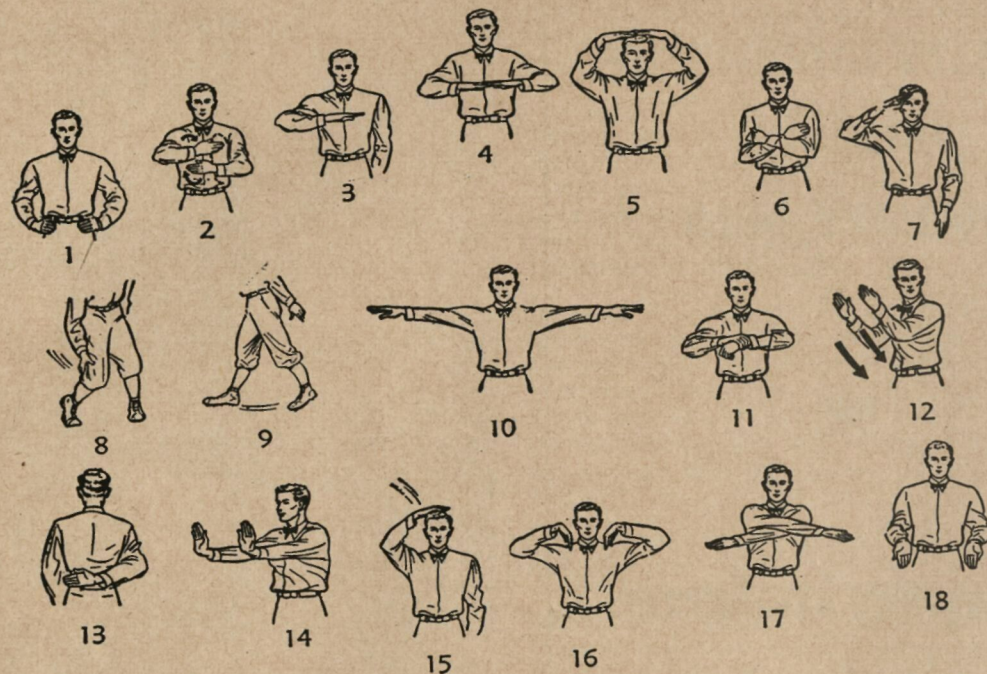


"BUCKY" WALTERS
Trainer



DON FARIS
News Director

COMMON PENALTIES ACCORDING TO SIGNALS



1. Offside — when ball is snapped or free kicked; encroachment on neutral zone before snap. (5 yards)

2. Illegal Procedure or Position. Usually for less than 7 men on offensive line at snap or wing back less than yard behind line at snap; also for false start, or more than 2 steps after fair catch. (5 yards)

3. Illegal Motion — by back or lineman at snap. (5 yards)

4. Illegal Shift — failure to stop full second after shift. (15 yards)

5. Illegal Substitution — entry during prohibited times (5 yards) or before eligible to return. (15 yards)

6. Delay of Game — as for more than 25 seconds putting ball in play, interruption of 25-second count by entry of substitute, or excessive time out. (5 yards; 15 yards if team not ready to start half).

7. Personal Foul — such as piling on, hurdling, tripping, striking, kneeling, kicking, elbowing or late tackling. (15 yards, possible disqualification)

8. Clipping — blocking from behind. (15 yards)

9. Roughing Kicker or Place Kick Holder. (15 yards)

10. Unsportsmanlike Conduct — Includes sideline coaching, invalid fair-catch signal, illegal return of disqualified player, persons illegally on field, rule violation during intermission. (15 yds.)

11. Illegal Use of Hands — as holding, by either offense or defense. (15 yards)

12. Intentional Grounding of Forward Pass. (5 yards, loss of down)

13. Illegal Pass — two forward passes in one down, forward pass beyond scrimmage line, handing ball forward illegally. (5 yards, loss of down)

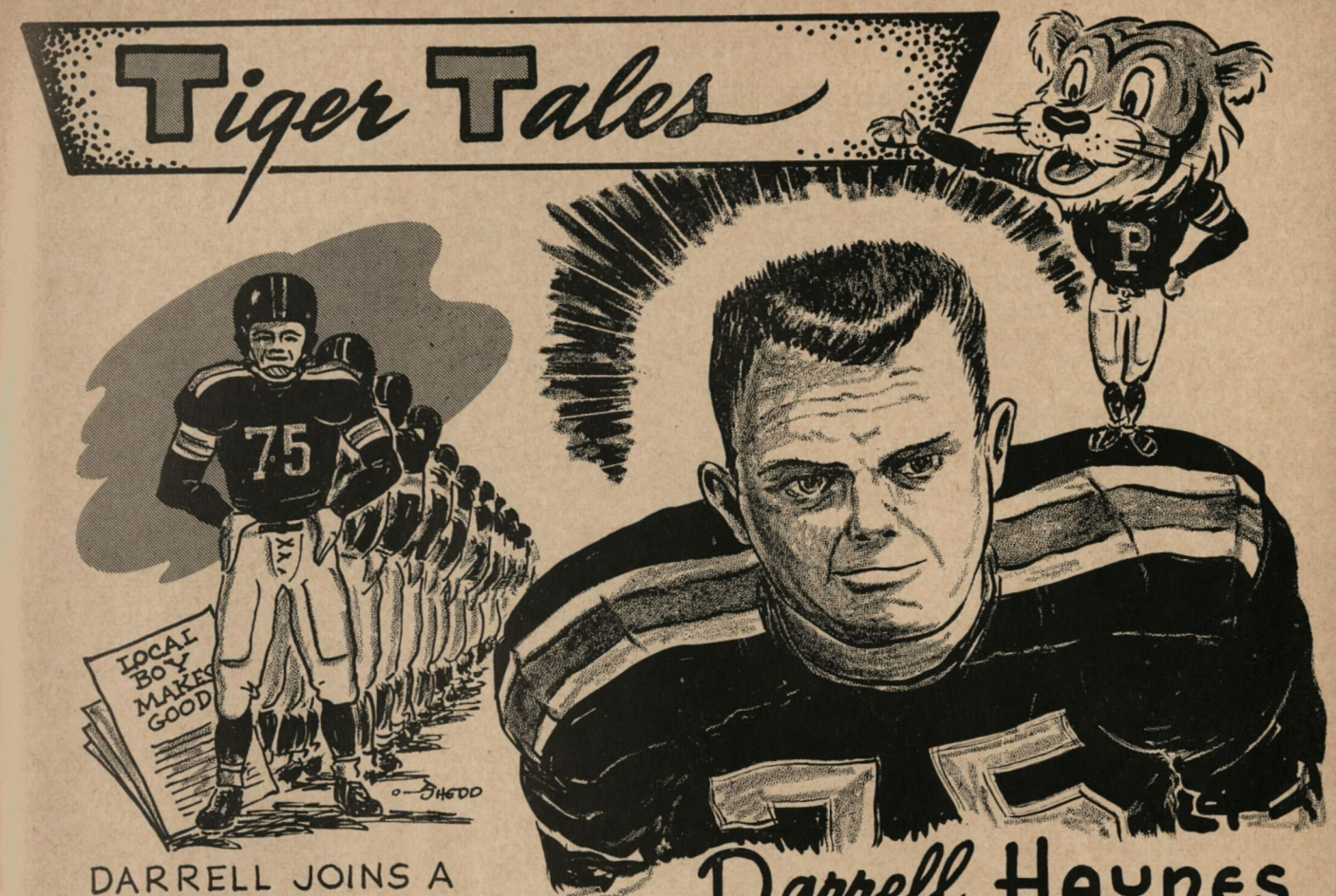
14. Interference — with pass receiver or defender (completed pass and 1st down at spot if by defense; 15 yards and loss of down if by passing team); or with opportunity to catch kick. (15 yards)

15. Ineligible Pass Receiver Downfield. (15 yards, loss of down)

16. Batting or Kicking Free Ball or Illegally Touching Free Kick (offended team's ball at spot) also, Ineligible Receiver Touching Forward Pass (penalty varies with spot of foul); and man who has been out of bounds touching pass. (loss of down)

17. Incomplete Forward Pass (no penalty, but loss of down); Penalty Declined; No Play, or No Score.

18. Crawling (5 yards); or Helping the Runner, or interlocked Interference. (15 yards)



DARRELL JOINS A LONG LINE OF STOCKTON BOYS WHO STARRED FOR C.O.P.

Darrell Haynes
SENIOR LEFT END
FROM STOCKTON



Ken Swearingen
SENIOR RIGHT HALF
FROM REDONDO BEACH

• Scott Bros. Sign Co.

College of the Pacific 1955 Statistics — 6 Games

	COP	Opp.
Times Carried Ball	281	219
Total Yards Gained Rushing	1070	938
Yards Lost Rushing	109	150
Net Yards Gained Rushing	961	788
Forward Passes Attempted	67	100
Forward Passes Completed	33	54
Forward Passes Had Intercepted	7	7
Total Yards Gained Passing	463	766
Total Plays Rushing and Passing	348	319
Net Yards Gained Rushing and Passing	1424	1554
First Downs Rushing	45	45
First Downs Passing	25	32
First Downs Penalties	4	6
Total First Downs	74	83
Times Punted	28	27
Total Yards Punted	949	956
Average Length of Punts	33.9	35.4
Penalties Against	33	39
Yards Lost on Penalties	325	374
Number of Fumbles	22	20
Ball Lost on Fumbles	11	13
Total Attendance	137,413	

INDIVIDUAL STATISTICS

Player and Pos.	Rushing				
	TCB	TYG	YL	N	AV
Ken Swearingen, rh	54	302	2	300	5.6
Dewey Tompkins, lh-rh	54	199	16	183	3.4
Lynn Swanson, fb-rh	25	123	0	123	4.9
Gene Campbell, lh	20	113	0	113	5.7
Farrell Funston, fb	32	114	8	106	3.3
J. B. Girard, lh	19	60	4	56	3.0
Don Bossert, fb	15	41	0	41	2.7
Ernie Lindo, fb	10	31	0	31	3.1
Chuck Chatfield, qb	7	17	3	14	2.0
Tom Perry, rh	2	8	0	8	4.0
Emil Dattola, fb	5	3	2	1	.2
Don Cornell, lh	1	0	1	-1	-1.0
Jim Reynosa, qb	19	29	32	-3	-1.5
Bill Jacobs, qb	18	28	41	-13	-7

PASSING

Player and Pos.	Att.	Comp.	Int.	Yds.	Pct.	TD
Bill Jacobs, qb	30	16	2	221	.533	1
Jim Reynosa, qb	30	14	4	217	.467	1
Chuck Chatfield, qb	5	2	0	15	.400	0
Tom Perry, rh	1	1	0	10	1.000	1
Del Whittier, qb	1	0	1	0	.000	0

PASS RECEIVING

Player and Position	No.	Caught	Yds.	TD
A. D. Williams, le	13		192	1
Lynn Swanson, fb-rh	4		20	0
J. B. Girard, lh	3		41	0
John Thomas, re	3		33	0
Roger Linn, re	2		44	0
Dewey Tompkins, lh-rh	2		42	0
Don Cornell, lh	1		35	0
Ken Cornell, re	1		20	0
Ken Swearingen, rh	1		18	0
Clyde Conner, re	1		10	1
Emil Dattola, fb	1		5	0
Farrell Funston, fb	1		3	0
Gene Cronin	0		10	1

SCORING

Player and Position	TD	P.A.T.	PTS.
Ken Swearingen, rh	2	9	21
Dewey Tompkins, l-rh	3		18
A. D. Williams, le	2		12
Lynn Swanson, fb-rh	2		12
Jim Reynosa, qb	2		12
Bill Jacobs, qb	1		6
Gene Cronin, lt	1		6
Clyde Conner, re	1		6
Don Bossert, fb		2	2

SCORES

14	College of the Pacific	Stanford Uni.	33
7	College of the Pacific	Purdue Uni.	14
27	College of the Pacific	Uni. of Cincinnati	13
20	College of the Pacific	Uni. of Idaho	0
13	College of the Pacific	Oregon State Col.	7
14	College of the Pacific	San Jose State	7
95			74

NUGGET BRAND

**Frank M.
Wilson Co., Inc.**

CALIFORNIA
CANNED FRUITS and VEGETABLES

Cherokee Lane and Harding Way
Stockton, California

Richmond- Chase Co.

— Canners of —

HEART'S DELIGHT — DIET DELIGHT
FRUITS AND VEGETABLES

Apricot Nectar — Peach Nectar
Pear Nectar

Fruit Nectars — The Popular Food Drink

Main Office — San Jose, P. O. Box 1030
Stockton Office — A St. and E. Weber Ave.

WE HOPE YOU

Enjoy

THE GAME

AND

Serve

Garden Basket

FRUITS AND VEGETABLES

for savory dishes

LIDO TOMATO PASTE

**THORNTON CANNING
CO.**

THORNTON, CALIFORNIA



Mor-Pak Preserving Corp.

E. FREMONT ST. — STOCKTON

— Packers of —

AUNT MARY'S

FANCY ELBERTA PEACHES

FANCY KADOTA FIGS

FANCY WHOLE PEELED APRICOTS

— and —

BLAZE O'GOLD and DELHI BRANDS

Wood Canning Co.

— Canners of —

CALIFORNIA FRUITS
AND VEGETABLES

Telephone HO 5-0291

Filbert and Miner Avenue
Stockton, California

GOOD LUCK C.O.P.



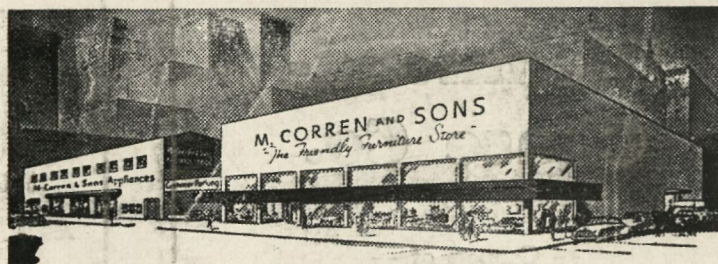
7 STORES IN CALIFORNIA

324 E. Main St., Stockton
Telephone HO 5-2611

STOCKTON'S LARGEST
SELECTION

Furniture — Floor Covering
Bedding — Appliances

McCorren & Sons
"The Friendly Furniture Store"

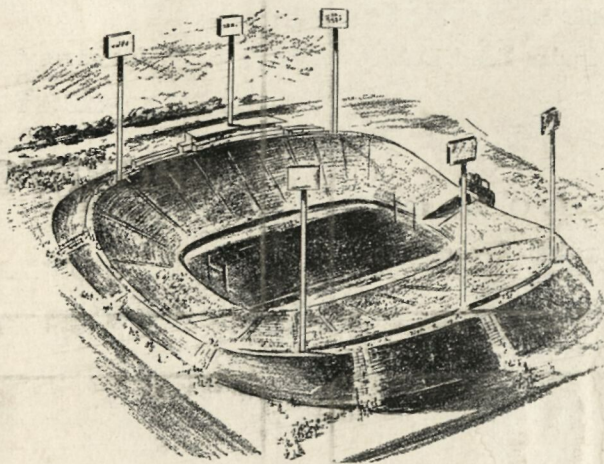


"For 49 Years A Stockton Tradition"

Free Parking Next Door To Store

120-136 S. San Joaquin Street

Tel. HO 6-6711



Shepherd & Green

BUILDERS

TELEPHONE HO 5-5883 — AMERICAN TRUST BUILDING — STOCKTON

Stationers
Office Equippers

Kendall's
INC.

Gifts — Greeting Cards
Party Favors



Telephone HO 6-6877

430 E. Weber Ave. Stockton