



11-28-1935

November 28, 1935 Football Program, COP vs San Diego Marines

University of the Pacific

Follow this and additional works at: <https://scholarlycommons.pacific.edu/ua-football>

Recommended Citation

University of the Pacific, "November 28, 1935 Football Program, COP vs San Diego Marines" (1935).
Football. 31.
<https://scholarlycommons.pacific.edu/ua-football/31>

This Book is brought to you for free and open access by the Athletics at Scholarly Commons. It has been accepted for inclusion in Football by an authorized administrator of Scholarly Commons. For more information, please contact mgibney@pacific.edu.

THE BENGAL SNARL

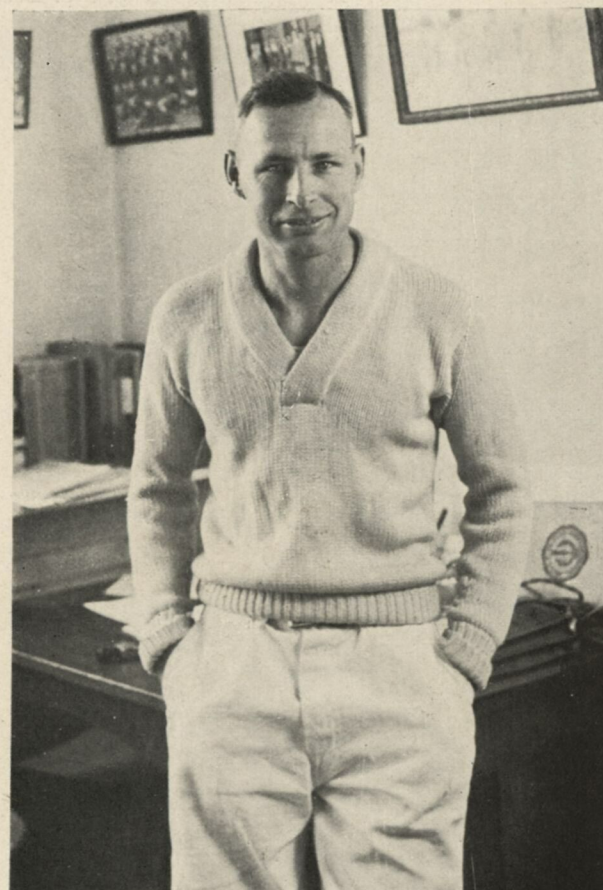
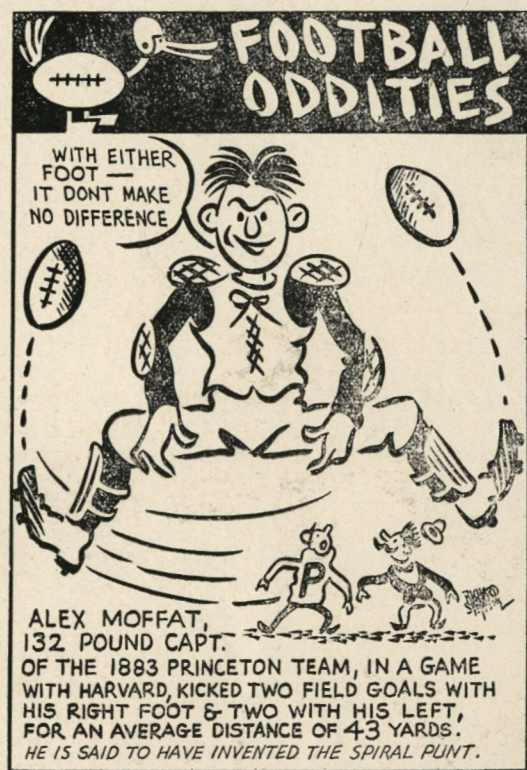


THANKS-
GIVING
DAY
:



OFFICIAL
PROGRAM
15c

San Diego Marines vs. College of Pacific
BAXTER STADIUM--1:30 P. M.--NOV. 28, 1935



ROBERT L. "DOC" BREEDEN
Director of Athletics, College of Pacific

... THE BENGAL SNARL

Marines vs. College of Pacific
Baxter Stadium . . . Nov. 28, 1935

YOU

At The Football Game

You have found your place in the Grand Stand in Baxter Stadium, and you settle back to await the kick-off of today's football game between the San Diego Marines and the College of the Pacific.

If it is a frosty afternoon, you will blow your breath with pleasure, and maybe ease out your belt just a notch or two—for it is the Day of Thanksgiving.

People about you are arriving, shuffling to their seats. Some of them you recognize. You stare at their clothes, or remark to your neighbor what a funny walk they have, or what nice people they are or are not. You glance at your watch. "Ten more minutes", you sigh.

You hear a sudden shout. The Pacific team is trotting onto the field. From somewhere in the scramble Bob Goodman—that's the Pacific yell-king—and his two assistants leap to the platform at the foot of the rooting section. A loud cheer arises, and whether you are a Pacific rooter or not you find yourself cheering.

Football swish through the air as the Bengals prance through their warming up drill. A short, stocky player fades back from an imaginary scrimmage line to pass to a scurrying team-mate. He shoots it. A short gasp escapes from the spectators as the ball fairly whistles in its flight to be neatly snagged. You consult your program.

You note with approval that it was number 24, Elmer Pryor, who heaved the pass to number 47, Jim Bainbridge. Pryor will start at left half-back, according to your program. He appears to be very quick-moving and shifty as he darts about. You note also that Bainbridge is in the starting line-up at quarterback.

Other players attract your eye. Number 33, John Cechini, who will start at tackle with Victor Barrett, number 35, is attempting to knife his way between Doug Silva (22) and Gordon Johnson (30), first string guards, in a mock line-thrust. For a moment he is halted, then with a lunge he breaks free. You remember reading somewhere that this Cechini has the longest string of sixty-minute varsity college football games to his credit in Pacific Coast

grid circles—fifteen straight games before he was substituted, and then only after an injury.

Lester "Daddy" Russell (6), veteran snapper-back, is squatting over a ball, passing it to Bob Coe (18), one of Coach Amos Alonzo Stagg's hardest running half-backs. A real triple-threat man, this Coe, your companion tells you. Slings sizzling passes, hits the line with gusto, and is a blocker par excellence.

You single out Al George (46) whose squirming hips and deedly aim engineered three touchdowns against the California Aggies at Woodland last week. Standing next to Al is Tom George (26), senior end, playing his last home game, and even at such a distance you see that the two resemble each other, but your neighbor assures you that they are not brothers.

Your neighbor also points out Fullback Bob Blanchard (43), End Elliott Savage (23), and Halfback Walter Foster (16), who, along with Bainbridge, Pryor, and Russell are making their final appearance today in Baxter Stadium.

Meanwhile, the Marines have poured forth onto the greensward, and your attention is sharply divided.

In the middle of the field a small group is centered about the two opposing captains and the referee as the coin is tossed.

A whistle is blown. The "subs" on both squads make a mad scramble for choice spots on the players' bench. The two teams line up for the opening kick-off.

You catch a glimpse of a diminutive, white-haired, but sturdy figure watching intently from the sidelines, and you know immediately that that is Amos Alonzo Stagg, the "Great Grand-Daddy" of American football. You watch him as he stands there so erectly, and you find it difficult to believe that he is nearing the completion of his 44th consecutive year of coaching football and his third season at the College of the Pacific. No wonder they call him the "Grand Old Man"!

... Then the game is on! You become engrossed in a series of end runs, split-bucks, punts, passes, "pee-dinger" plays, and "flea-flanker" formations.

Suddenly the gun is fired, and you realize that the day has grown dim. You allow yourself to be jostled along with the homeward departing crowd. You are buffeted, perhaps stepped upon, and certainly shoved—but you are happy because it was a spectacular game, and your team has played hard, fast, and clean football. And then, too, you are happy because it is still the Day of Thanksgiving, and you are going home—to forage for **one** more cold snack off the ol' bird . . .

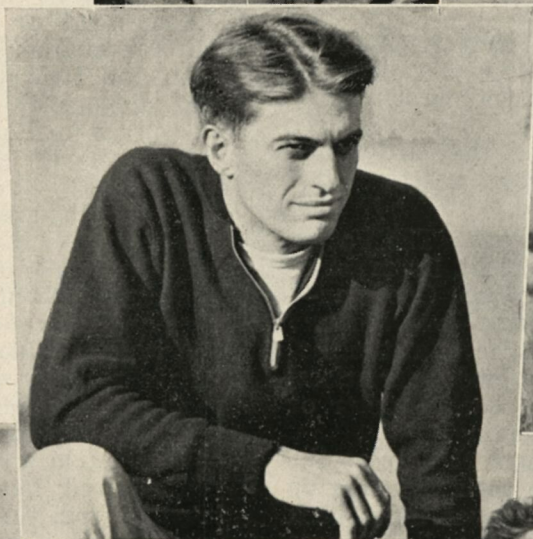
TIGERS IN ACTION



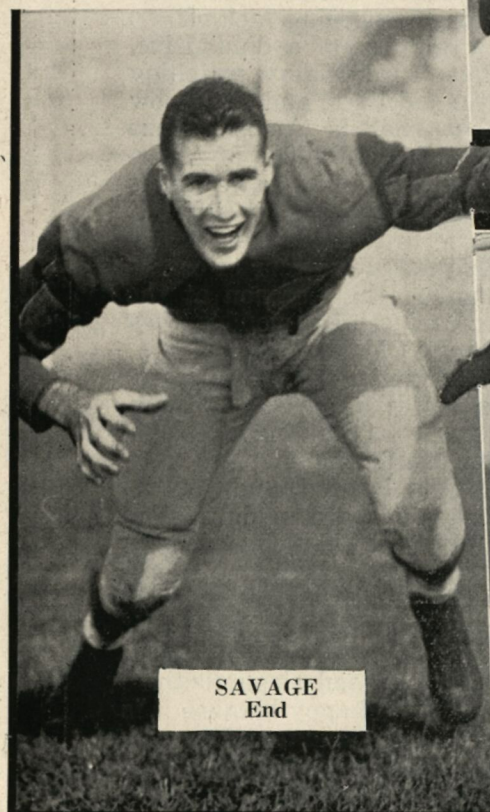
TIGERS



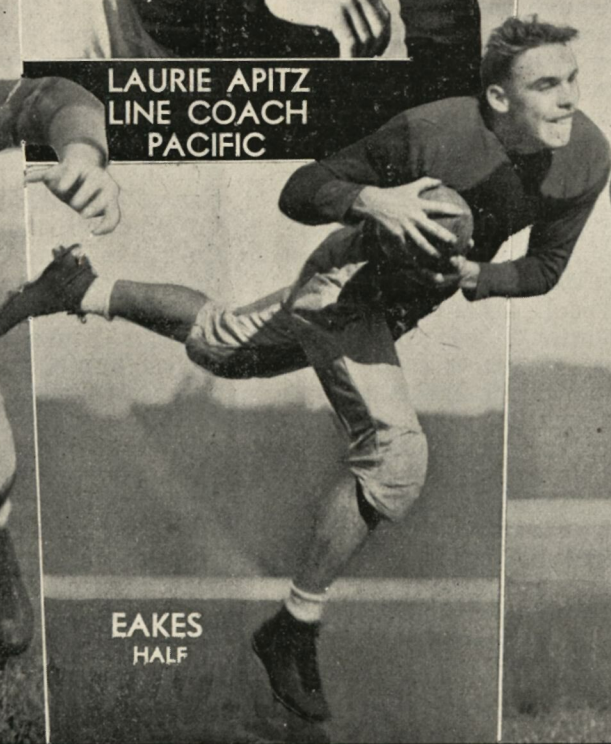
MARTINOVICH
Full



LAURIE APITZ
LINE COACH
PACIFIC



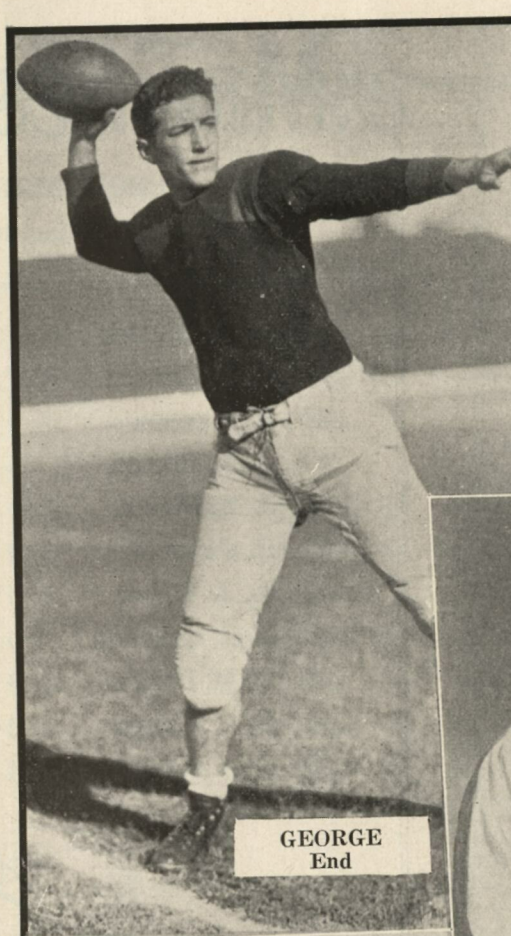
SAVAGE
End



EAKES
HALF



BLANCHARD
Full



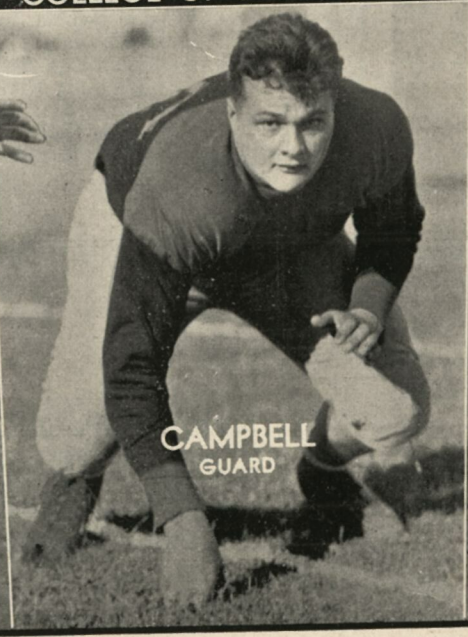
GEORGE
End



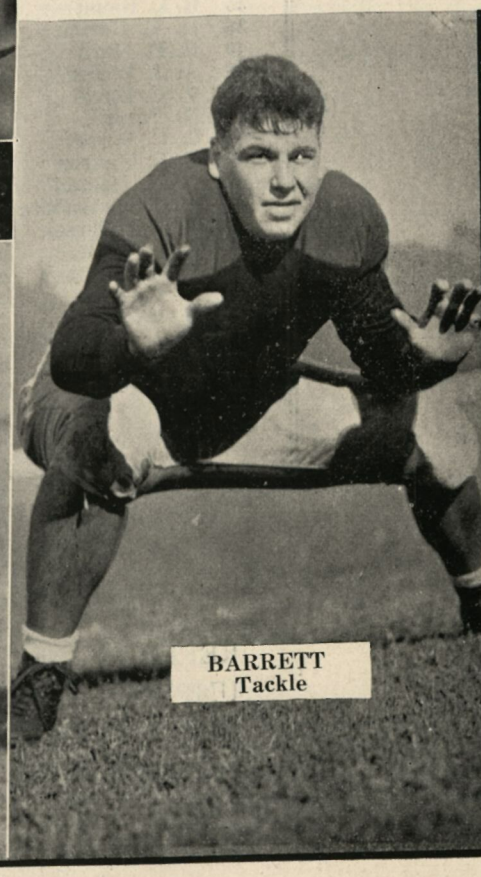
ALONZO A. STAGG
HEAD COACH
COLLEGE OF THE PACIFIC



CECHINI
Tackle



CAMPBELL
GUARD



BARRETT
Tackle

TIGERS

MARINES

CAPTAIN CHARLES McL. LOTT
Head Coach

No.	Name	Pos.	Wt.	Experience	Home Town
10	M. D. Hill	b.	160	Lexington HS.	Lexington, Ala.
11	J. A. Stevens	b.	150	Marin JC.	Marin, Calif.
12	D. C. Gibson	b.	155	U. S. Army	Alhambra, Calif.
13	J. P. Franklin	b.	170	Tulsa University	Tulsa, Okla.
14	D. H. Siebel	b.	162	Woodward HS.	Woodward, Okla.
15	R. R. Harris	g.	174	Bridgeport HS.	Bridgeport, Ohio
17	S. E. Reynolds	b.	160	Baylor University	Beaumont, Tex.
19	H. M. Dupler	b.	165	Marines	Frankford, Indiana
20	L. A. Musick	e.	171	Pennington Gap HS.	Pennington, Va.
21	F. L. Gregory	g.	175	Marines	Chelsea, Mass.
22	J. M. Callahan	b.	170	Marines	Greenville, S. C.
23	V. Kleoponis	g.	185	Marines	Pittsburgh, Pa.
24	W. L. Walker	g.	180	Bridgeport HS.	Bridgeport, Ala.
27	C. G. Cook	e.	180	St. Helens HS.	Portland, Oregon
29	H. E. Tracy	b.	175	Santa Monica HS.	Santa Monica, Cal.
31	J. M. Ficken	g.	175	Santa Clara Frosh	San Diego, Cal.
32	J. L. McHenry	c.	174	Lawrence HS.	Lawrence, Kansas
33	B. P. Webb	b.	175	Everett HS.	Everett, Wash.
34	J. C. Canale	t.	190	Lincoln HS.	Lincoln, Calif.
35	R. L. Rountree	b.	170	Emanuel HS.	Summit, Georgia
36	H. E. Barieu	b.	190	Marines	Exeter, Calif.
40	R. D. Huth	e.	192	Oregon University	Nampa, Idaho
42	A. J. Weber	e.	175	Textile HS.	New York, N. Y.
43	V. E. Davis	t.	198	Olympic Club	San Francisco, Cal.
44	H. Farrell	e.	194	Marines	Houston, Texas
45	R. C. Wever	t.	210	U. S. S. Arizona	Cheyenne, Wyo.
47	R. F. Hansen	g.	195	Marines	Los Angeles, Calif.
49	O. N. Hostad	c.	202	Marines	Avatoma, Minn.
50	W.H.Sonnenberg	e.	180	Marines	Berkeley, Calif.
52	A. J. Anderson	t.	198	Nevada University	Reno, Nevada
55	E. R. Wine	b.	180	Marines	Cedar Rapids, Iowa
59	R. M. Whytock	c.	180	Glendale HS.	Glendale, Calif.
60	R. Vick	c.	212	Pottsville HS.	Hamilton, Texas
62	H. W. Hall	t.	220	Marines	Wichita, Kansas
63	C. Cummings	e.	205	Marines	Washington, Okla.
66	J. P. Crouch	b.	206	Georgia University	Ocilla, Ga.
67	C. I. Boles	g.	200	Coe College	Cedar Rapids, Iowa

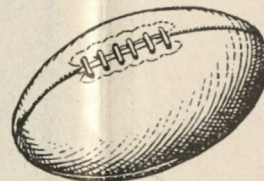
OFFICIALS

REFEREE	P. LENZ
UMPIRE	E. FERRIS
HEAD LINESMAN	F. ADAMS
FIELD JUDGE	L. BROOKS

Marines vs. Tigers

PROBABLE STARTING LINE-UPS
(Subject to change of Coaches)

20	L. A. Musick	L E R	Elliott Savage	23
47	R. F. Hansen	L T R	Vic Barrett	35
23	V. Kleoponis	L G R	Doug Silva	22
49	O. N. Hostad	C	Lester Russell	6
31	J. M. Ficken	R G L	Gordon Johnson	30
63	C. Cummings	R T L	John Cechini	33
42	A. J. Weber	R E L	Roger Baer	9
22	J. M. Callahan	Q	Jim Bainbridge	47
36	H. M. Barieu	L H R	Elmer Pryor	24
12	D. C. Gibson	R H L	Bob Coe	18
13	J. P. Franklin	F	Bob Blanchard	43



FAR WESTERN CONFERENCE Standings to Date

	Won	Lost	Tied	Pct.
Fresno State	4	0	0	1.000
College of Pacific	3	1	0	.750
Nevada	1	2	0	.333
Cal. Aggies	1	3	0	.250
Chico State	0	3	0	.000

GAME THIS WEEK

University of Nevada
AT CHICO STATE

PACIFIC

A. A. STAGG, Head Coach
LAURIE APITZ, Assistant

No.	Name	Pos.	Wt.	Age	Home Town
1	George Bralye	h.	145	23	San Francisco
3	Clarence Cortez	h.	168	22	Grass Valley
4	Fred Straube	h.	172	20	Folsom
6	Lester Russell	c.	180	23	Auburn
8	Rod Lynch	g.	175	24	San Francisco
9	Roger Baer	e.	175	20	San Francisco
11	Rudy Rivera	q.	168	21	Vallejo
14	Leon Eakes	e.	152	22	Ellsworth, Kan.
15	Hal Kniveton	e.	172	19	Redwood City
16	Walter Foster	h.	172	20	Sebastopol
17	Beck Parsons	e.	173	21	Oakdale
18	Bob Coe	h.	160	20	Sacramento
19	Fred Bonfield	g.	215	19	Ukiah
22	Doug Silva	g.	186	21	Stockton
23	Elliott Savage	e.	180	22	Vallejo
24	Elmer Pryor	h.	160	22	Fullerton
25	Jerry Keithley	e.	175	18	Costa Mesa
26	Tom George	e.	170	20	Palo Alto
27	Roy Cencirulo	c.	168	20	Lodi
28	Irvin Lang	g.	176	23	Stockton
29	Earl Singleton	t.	178	21	Petaluma
30	Gordon Johnson	g.	180	22	Palo Alto
33	John Cechini	t.	195	20	Stockton
35	Victor Barrett	t.	229	18	Tracy
36	Victor Robinson	g.	178	20	Lakeport
38	William Avery	t.	210	19	Roseville
39	Rollie Campbell	t.	236	18	Richmond
40	Francis O'Hare	t.	203	22	Stockton
41	Al Codiga	e.	162	23	Fairfield
42	Phil Martinovich	f.	209	20	Placerville
43	Bob Blanchard	f.	187	21	Santa Rosa
45	Joey Olaeta	q.	169	21	Lovelock, Nev.
46	Al George	q.	150	20	Stockton
47	Jim Bainbridge	q.	193	22	Stockton
50	Sandy Trezise	f.	190	22	Grass Valley

COLLEGE OF PACIFIC STAFF

AMOS ALONZO STAGG	Head Coach
LAURIE APITZ	Assistant Coach
ROBERT BREEDEN	Athletic Director
RALPH B. FRANCIS	Graduate Manager
GEORG MEYERS	Publicity Director
GEORGE H. SANDERSON, M. D.,	Team Physician

Pacific Pigskin Prognostications

Even before the dust has begun to settle over the grid horizon of 1935 prophesies are in the air regarding the team which the "Grand Old Man" will conjure from his bottomless bag o' tricks in 1936.

Active prediction for a bumper litter of bounding Bengals for next year began with the achievement of an undefiled season by Coach Jim Corson's Pacific freshmen squad. Just a glance through the roster of the yearling squad which Corson and his two aides-de-grid, Ralph Francis and Chris Kjeldsen, guided over five formidable obstacles to pile up a total of 62 points against 16 will offer a brief glimpse of some of the rabbits which may be sprung from the Stagg chapeau next season.

Chief among Bengal Babe top-notch performers in the forward wall who promise to make threatening bids for regular posts with the 1936 Tiger varsity are:

Ed Koehler, end. Koehler played brilliant football at his end of the scrimmage line all season. He snags passes with such grace that difficult catches appear easy. Koehler was on the receiving end of several touchdown passes in this season's schedule.

Clem Swagerty, end. Swagerty has proved himself one of the most capable defensive ends now engaged in grid competition at Pacific. It is a literal fact that all the yards made around Swagerty's end this season could be enumerated on the fingers of both hands—and no repeats.

Tyrell Abercrombie, tackle. Abercrombie suffered a leg injury early in the season which shelved him definitely, but his work during the first few weeks of scrimmage revealed that he is a man to be reckoned with when naming future varsity candidates.

Wilbur Golithan, guard. Goliathan is the speediest line-man on the Tiger cub roster. He is of aggressive grid temperament and just large enough to worry any opposing line-man when he is in the mood.

Larry Martin, guard. Larry takes his football seriously and in large doses. Nail-

ing ball-carriers before they reached the line and breaking up reverses behind scrimmage were Martin's specialties this season. Peg him to be doing the same and more of it for the varsity in the near future.

Bob King and Alton Geiser, alternates at center. Both are calm, good passers, and strong on defense. Next year they may settle their battle by benching other aspirants for the all-important post of snapper-back.

Backfield men galore will swarm the practice sessions next season with the return of Woodard, Campbell, Morotti, Capps, and other frosh ball-hawks along with several effective performers from this year's varsity.

Tom Campbell, pass-swishing half-back, promises to develop into one of the finest flingers of the football in several Pacific seasons. This lad fires passes from any angle—running, jumping, or between the arms of a would-be-blocker.

Add to these mentioned the names of all on the present varsity roster with the exception of Russell, Lynch, Eakes, Foster, Savage, Pryor, Tom George, Blanchard and Bainbridge—all of whom are making their final appearance in Baxter Stadium under the Orange and Black today—and a fair prospectus of Pacific's football fortunes for 1936 is presented.

Thus, before Amos Alonzo Stagg has done with his third year at the College of the Pacific, the destiny of his forty-fifth consecutive season of coaching is even now in the mould. All the Pacific Coast joins in extending to him the wish, "May it be your finest season."

TIGER CUB SCORES

Tiger Cubs	12—Santa Rosa J. C.	0
Tiger Cubs	13—San Jose State Frosh.	0
Tiger Cubs	7—St. Mary's Frosh	6
Tiger Cubs	18—Fresno State Frosh.	7
Tiger Cubs	12—Menlo J. C.	3
Total	62	16

Bengal Babe Mentor



COACH JIM CORSON

THE MARINES HAVE LANDED

Facing a grid schedule this year which rivals the season of any college or university eleven on the Pacific Coast—with the exception of the "Big Five" of California, Stanford, California, U. C. L. A. and St. Mary's — the San Diego Marines have

emerged to date with 129 points scored against 32 for their opponents and only one loss to splotch their slate.

That single defeat was rung up on the Devil-Dogs by the powerful California Rambler squad by a bitterly contested 14-13 margin. Other scores of Marine games this season:

S.D.M. 33	U.S.S. Idaho	0
S.D.M. 20	Santa Barb.	0
S.D.M. 19	Cal. Tech.	6
S.D.M. 6	Pomona	2
S.D.M. 19	S.C. Spartans	0
S.D.M. 19	Loyola	9

Coach of the Marine football squad this year is Captain Charles M. Lott, who has been associated with Marine Corps athletics as an athlete, Athletic Officer, and coach for over thirty years.

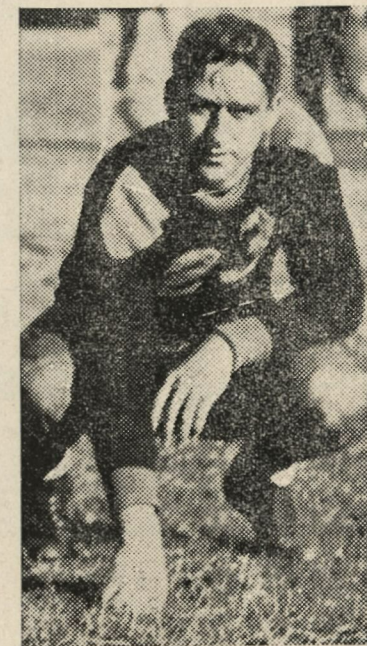
The roster of the Leatherneck players reads like a "See America First" travel tour advertisement. Ranging from a halfback from Alabama to a fullback from Washington, twenty-seven states — Alabama, California, Oklahoma, Ohio, Texas, Indiana, Virginia, Massachusetts, South Carolina, Pennsylvania, Oregon, Kansas, Washington, Georgia, Idaho, New York, Wyoming, Minnesota, Nevada and Iowa—are represented in a squad of thirty-seven football players.

Many of Coach Lott's charges are veterans of several seasons, having played through high school, in college, and with the Marine Corps.

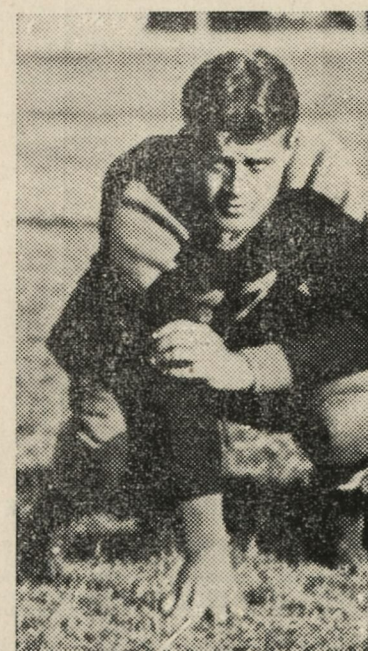
That the Marines will have landed when the smoke of the final gun clears away today the Stagmen do not deny, but they are touchy over the point of just who will have the situation well in hand.



ED WINN, Halfback



DAVE GIBSON, Halfback



HARLEY DUPLER, Fullback
Co-Captain



HAROLD BARRIEAU
Fullback

CHART THE GAME

	0	10	20	30	40	50	40	30	20	10	0
1st Quarter											
2nd Quarter											
3rd Quarter											
4th Quarter											

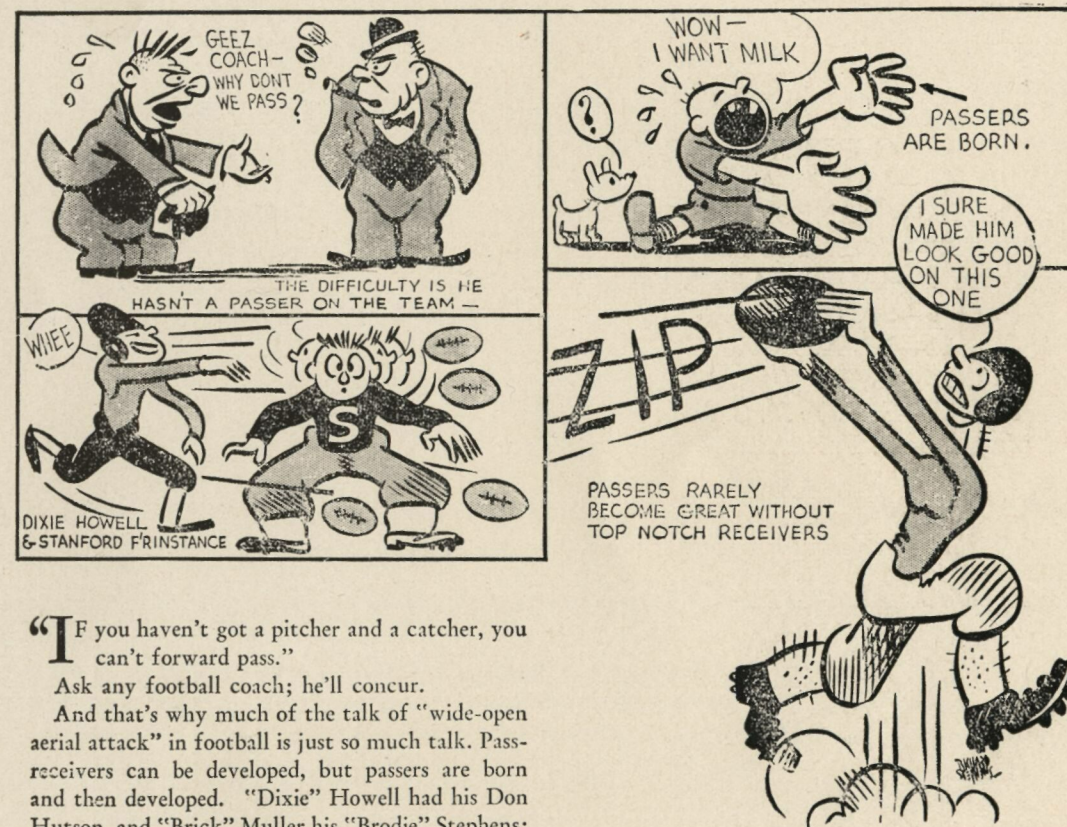
SYMBOLS

— — — — — Run
 — — — — — Kick
 ~~~~~ Incompleted Pass  
 x - x - x - Completed Pass  
 x o x o x o Intercepted Pass  
 o o o o o o Fumble  
 x x x x x x Penalty  
 (1) First Down

### EXPLANATION: USE THE MARKS SUGGESTED HERE

Explanation: Using the marks suggested here, chart the game and you will have a record of it for future reference. If the kickoff is from the 40-yard line at the left side of the field as you look at it and the ball travels to the opponent's 10-yard line, use the symbol for "kick" and draw that play from and to the corresponding places at the top of your chart. If the kickoff is run back 15 yards, draw in the 15-yard return. Chart other plays similarly, using the various symbols for the various plays.  
 Start at the top and work downward. Put the first-quarter plays in the designated section, the second-quarter plays in the section next below, etc. If Pacific is defending the left goal in the first quarter, write "Pacific" in the left margin and the name of the opponent in the right. Points made by scores may be indicated at the places made.

## YOU NEED A PITCHER AND A CATCHER



**I**f you haven't got a pitcher and a catcher, you can't forward pass."

Ask any football coach; he'll concur.

And that's why much of the talk of "wide-open aerial attack" in football is just so much talk. Pass-receivers can be developed, but passers are born and then developed. "Dixie" Howell had his Don Hutson, and "Brick" Muller his "Brodie" Stephens; there are enough other examples to back up the statement that passers, good as they may naturally be, rarely become great without top-notch receivers.

Every Saturday you can hear the prayer of partisan bleacherdom: "Why, oh why, don't they try a pass? The right half'd be a sucker for a quick pass to the flat."

And he probably would, too, but the difficulty is that probably there isn't a passer on the attacking team that can throw a pass without the chances being at least even that the right halfback will intercept it.

An example: Stanford, an almost strictly non-passing team in 1934 and a team that was tabbed by most scouts as weak against air attack, was beaten by the uncanny pitching of "Dixie" Howell, who threw nine out of eleven completed passes in the Rose Bowl game. Earlier in the season

Washington staked an undefeated record on a few passes against Stanford, and lost the gamble and the ball game because the Indians had a field day on pass interceptions. Washington lacked what Alabama had, a sure-fire passer and a sticky-fingered receiver.

Every once in a while there comes along a team with a Howell, a Muller, a Benny Friedman, a Harry Newman or an Art Parisien and, presto! you have a great passing attack. If you don't think so, look back on last season and count the teams that were famous for their passers and their passing. There was Yale with Jerry Roscoe; Princeton with Garry LeVan, "Kats" Kadlic and Ken Sandbach; Illinois, with Beynon and Lindberg; Navy with Borries; and Army with "Waco Jack" Buckler, to mention only a few.



# BENGAL BASKETBALL

## SEASON SCHEDULE

### 1935-36

\*Dec. 12—GOLDEN STATE MILK  
 \*Dec. 16—U. C. L. A.  
 Dec. 17—STANFORD  
 \*Dec. 20—OLYMPIC CLUB  
 \*Jan. 4—SAINT MARY'S  
 \*Jan. 8—SANTA CLARA (Tentative)  
 \*Jan. 11—NEGRO GHOSTS  
 Jan. 15—OPEN  
 Jan. 18—S. F. Y. M. C. A.  
 \*Jan. 24—S. F. STATE

Jan. 25—S. F. STATE  
 \*Jan. 31—CHICO  
 \*Feb. 1—CHICO  
 Feb. 7—NEVADA  
 Feb. 8—NEVADA  
 \*Feb. 13—CAL. AGGIES  
 Feb. 15—CAL. AGGIES  
 \*Feb. 21—FRESNO  
 \*Feb. 22—FRESNO

\* Indicates game played at Stockton.

## DECEMBER 7th

AT

*San Diego*

C. O. P. Bengals

VS.

San Diego State

*Aztecs*



KICK-OFF . . . 2 P. M.

## SCORES

|          |
|----------|
|          |
|          |
|          |
|          |
|          |
| S. D. M. |

|          |
|----------|
|          |
|          |
|          |
|          |
|          |
| C. O. P. |

FINAL: S. D. M. \_\_\_\_\_ C. O. P. \_\_\_\_\_