



1952

Female Collegiate Institute at Santa Clara

Shirley Walker

Follow this and additional works at: <https://scholarlycommons.pacific.edu/ua-histories>

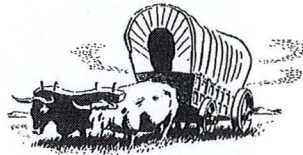
Recommended Citation

Walker, Shirley, "Female Collegiate Institute at Santa Clara" (1952). *University of the Pacific Individual Histories*. 30.

<https://scholarlycommons.pacific.edu/ua-histories/30>

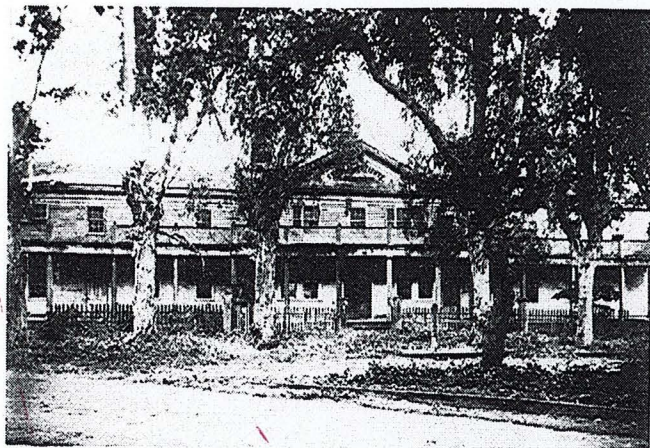
This Article is brought to you for free and open access by the Publications at Scholarly Commons. It has been accepted for inclusion in University of the Pacific Individual Histories by an authorized administrator of Scholarly Commons. For more information, please contact mgibney@pacific.edu.

THE HALL FAMILY CROSSING THE PLAINS



BY MARGARET HALL WALKER
with material collected and prepared by Shirley Walker

Privately printed by
WALLACE KIBBEE & SON
SAN FRANCISCO 1952

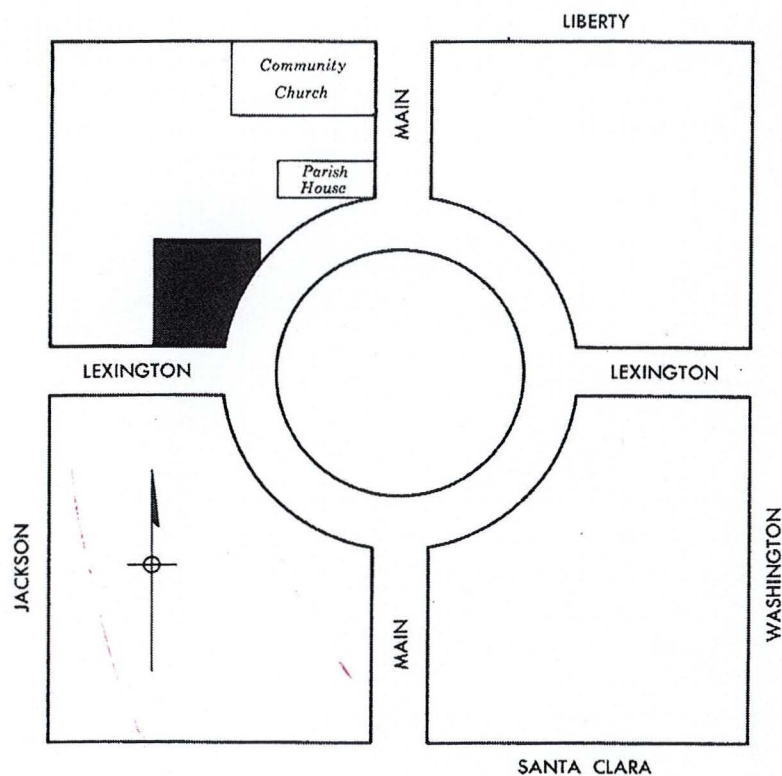


FEMALE COLLEGIATE INSTITUTE AT
SANTA CLARA, CALIFORNIA

FEMALE COLLEGIATE INSTITUTE AT SANTA CLARA

THE FEMALE COLLEGIATE INSTITUTE, often called the Female Seminary, was built in 1853 on the northwest corner of the Plaza in Santa Clara. It was a Methodist Seminary and served as the girls' department of the University of the Pacific. The building was a two-story wooden structure and contained sixty-six rooms. Rev. Edward Bannister's wife became the first Preceptress. Mrs. M. C. Briggs was the first Principal and Mrs. Way was the teacher of Mathematics, Latin and Greek. In 1869 the Female Collegiate Institute became an integral part of the University of the Pacific. When the University of the Pacific moved to San Jose in 1870, the building was converted into an apartment dwelling. Recently it was torn down to make room for several modern homes.

The University of the Pacific was chartered on July 10, 1851, first as the California Wesleyan College, changing its name the following year. It is the oldest chartered college in the State of California and was open to "such females who desired to pursue a college course." The women students attended the Female Collegiate Institute from 1853 to 1870. The men students attended classes in a three story unornamented brick building in the southwest part of Santa Clara, just north of the Catholic cemetery. Rev. Edward Bannister served as the first Principal (1852-54), then later he became the first President in 1859, resigning in 1867. In 1870-71 the University moved to a new campus of twenty acres at College Park, midway between Santa Clara and San Jose. Before moving to San Jose the men and women were taught in separate classes in most instances, so it was not a truly co-educational college from the beginning. The institution changed its name in 1911 to the College of the Pacific. In 1914 Central Hall was destroyed by fire and in 1915 West Hall went up in flames. The finances of the college sagged badly. Because of a greater educational opportunity, to serve a center of the largest high



MAP OF PLAZA AT SANTA CLARA, CALIFORNIA
Area in black shows former location of the Female Collegiate Institute

school area in the United States in which there was no college, the institution moved to Stockton in 1924. It is now truly co-educational throughout and specializes in the humanities. It has an outstanding Conservatory of Music. The spacious campus is one of the most beautiful in California. Today's total enrollment is over 1400 and it little resembles the struggling institution of a few hundred students several generations ago.