



Spring 5-2-1967

## Naranjado 1967 (Off Spring)

Pacific Student Association

Follow this and additional works at: <https://scholarlycommons.pacific.edu/yearbook>

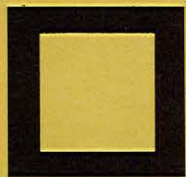
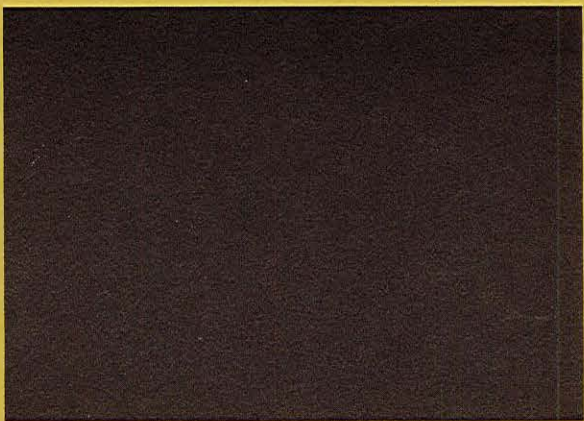
---

### Recommended Citation

Pacific Student Association, "Naranjado 1967 (Off Spring)" (1967). *Yearbook, The Naranjado, The Campus, Epoch*. 9.

<https://scholarlycommons.pacific.edu/yearbook/9>

This Yearbook is brought to you for free and open access by the Publications at Scholarly Commons. It has been accepted for inclusion in Yearbook, The Naranjado, The Campus, Epoch by an authorized administrator of Scholarly Commons. For more information, please contact [mgibney@pacific.edu](mailto:mgibney@pacific.edu).



'67

OFF-SPRING

Naranjado









# The Off-Spring

Published by the 1967 Naranjado Staff  
of the University of the Pacific,  
Stockton, California  
for the Pacific Student Association



# Spring

Rain,

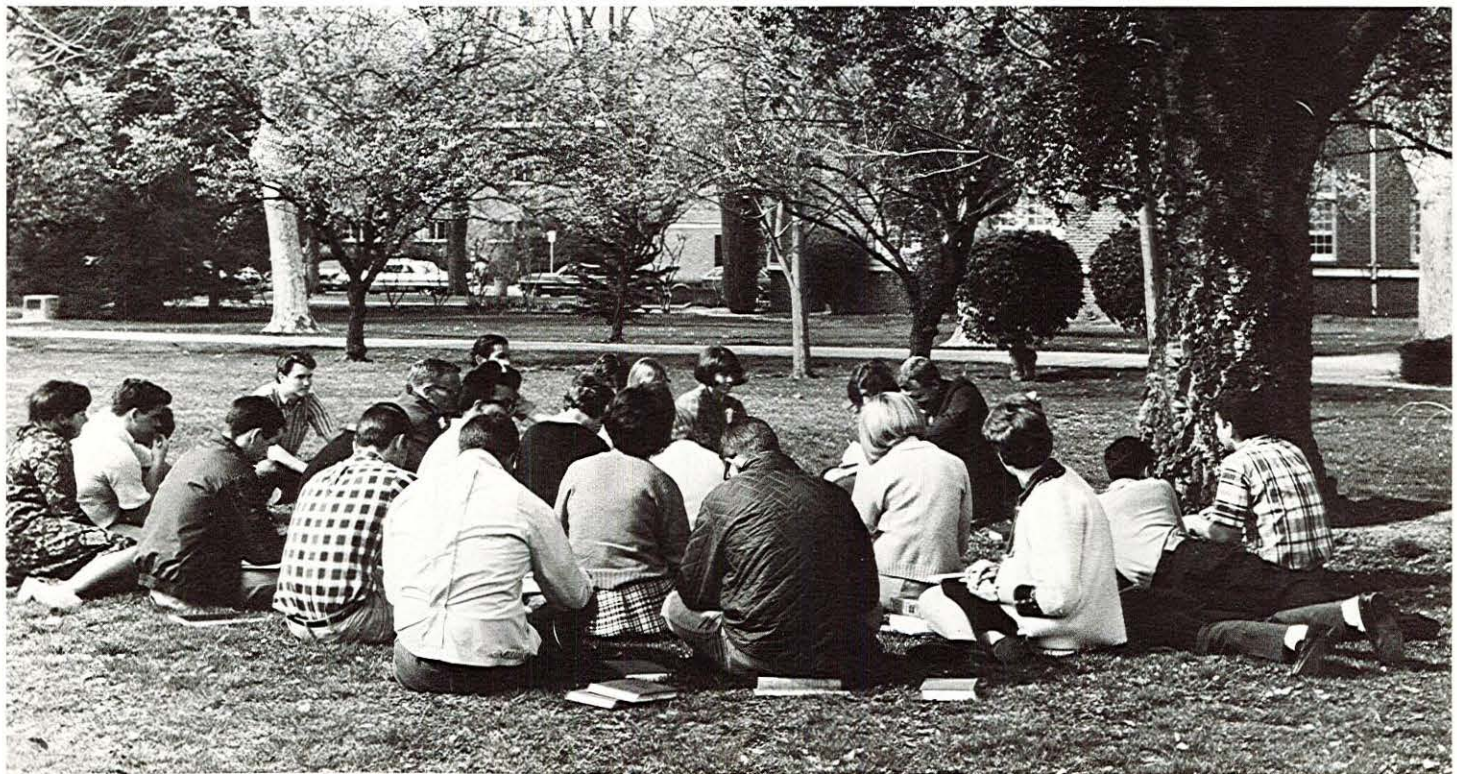
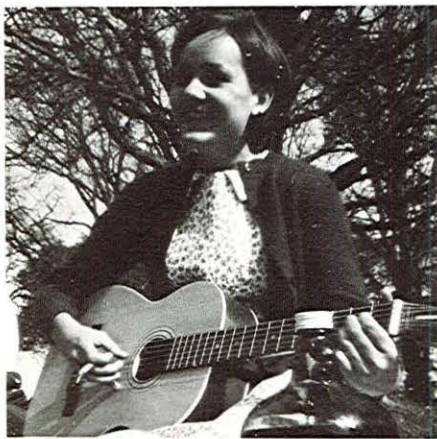
Hail,



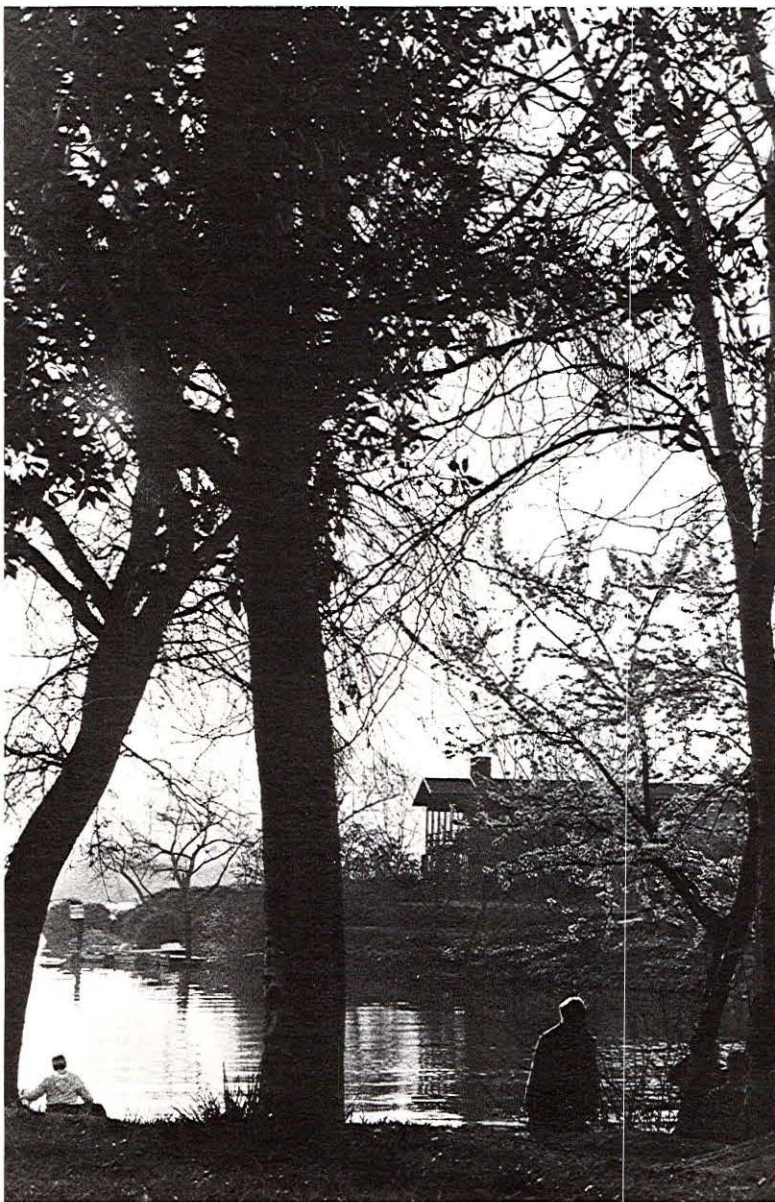
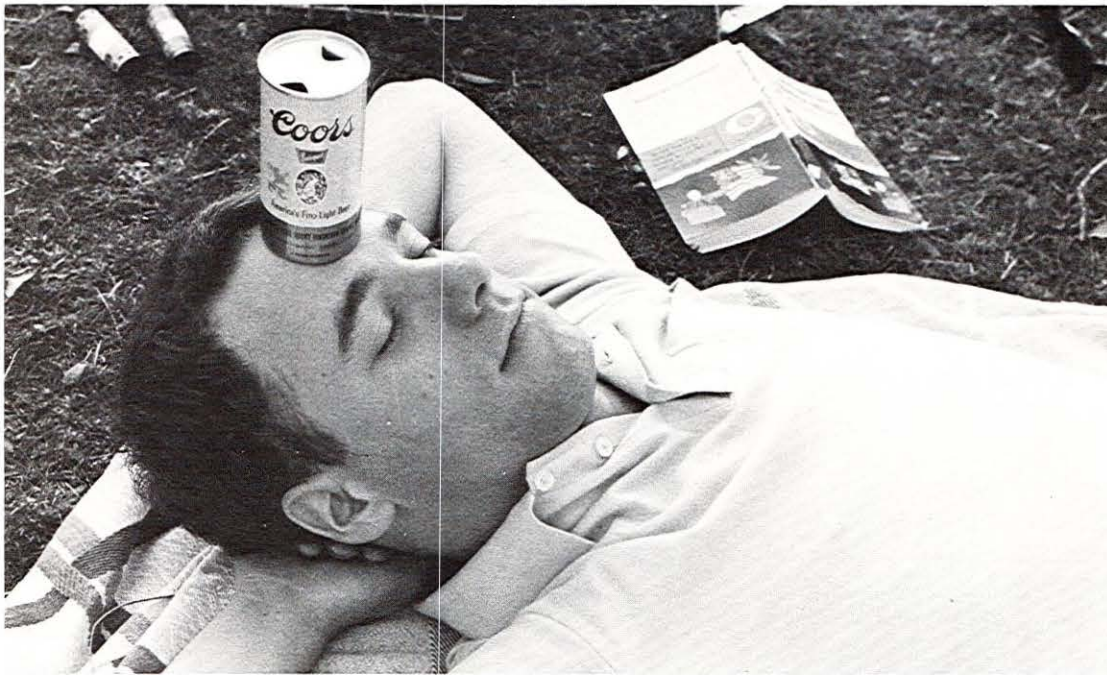


# Brings

Heat

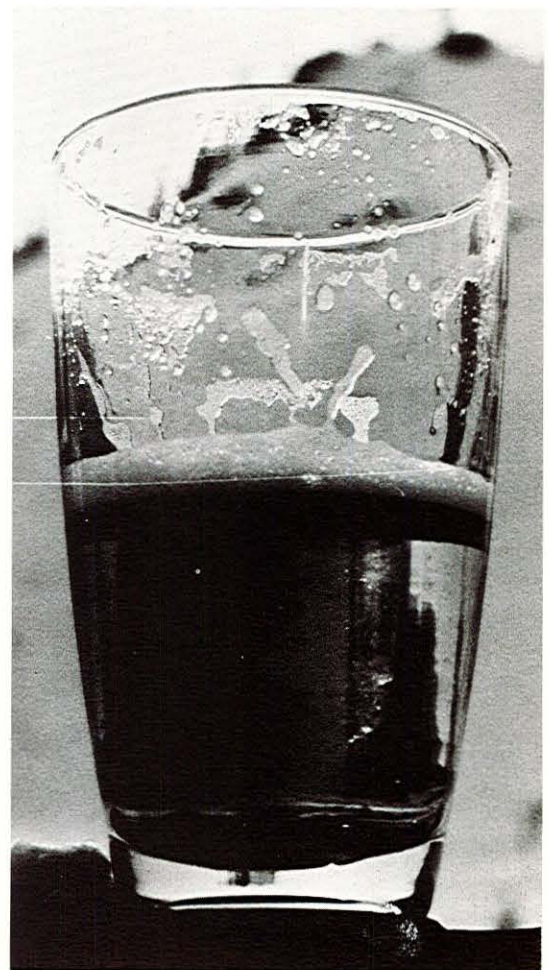
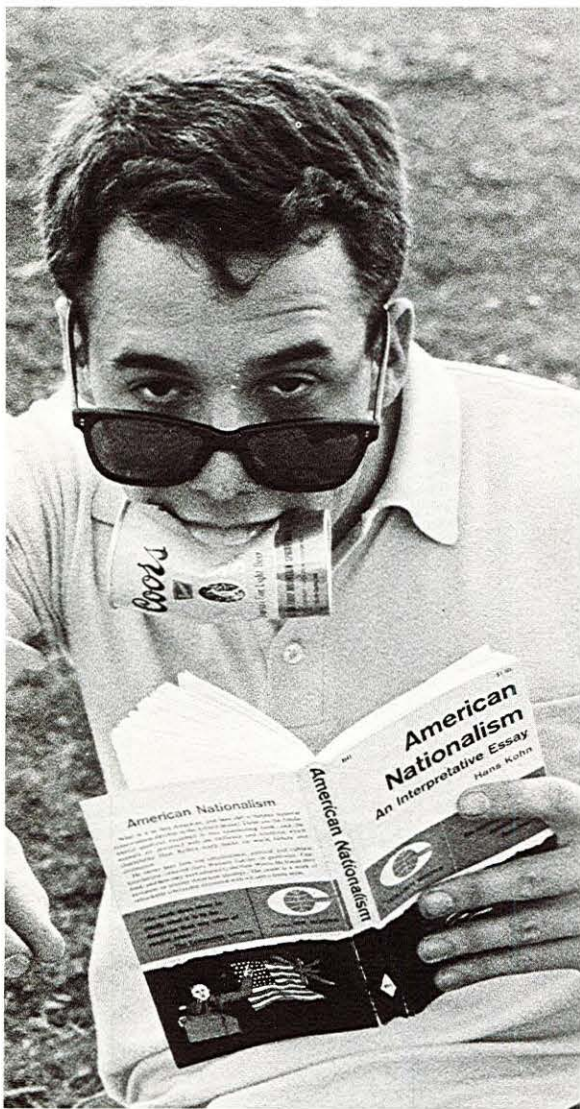






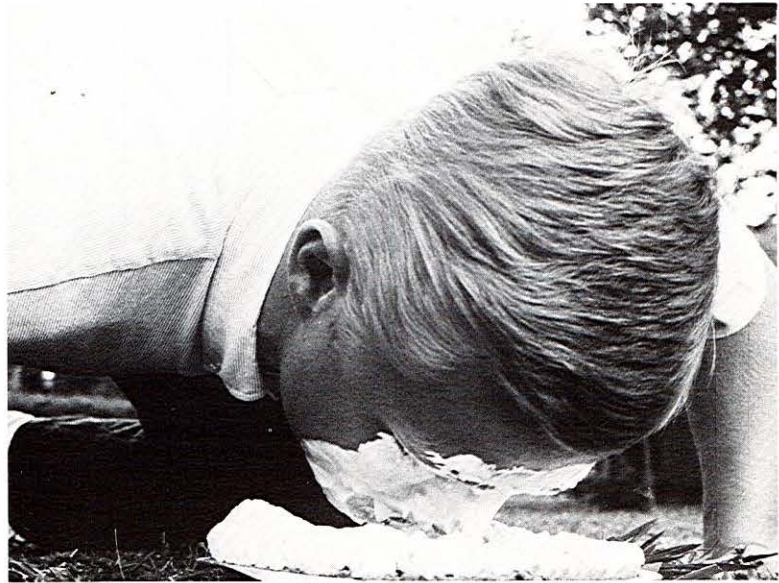


... and then  
there's Friday  
Afternoon.



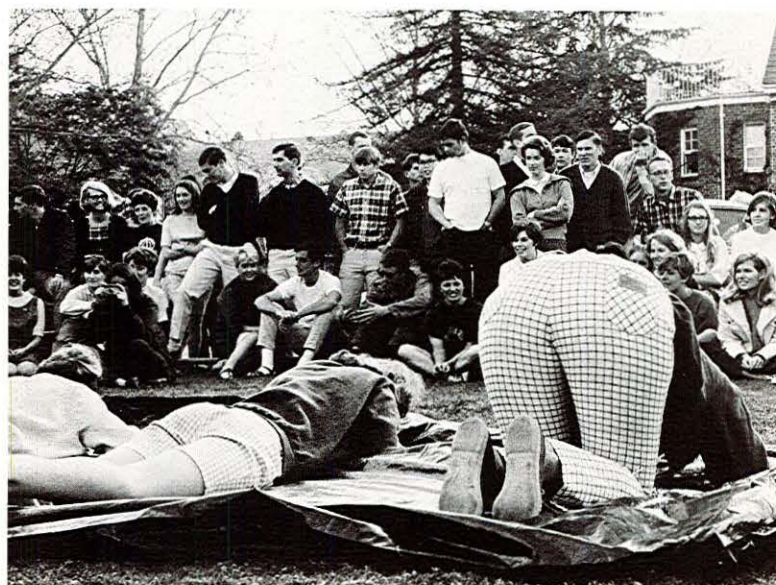
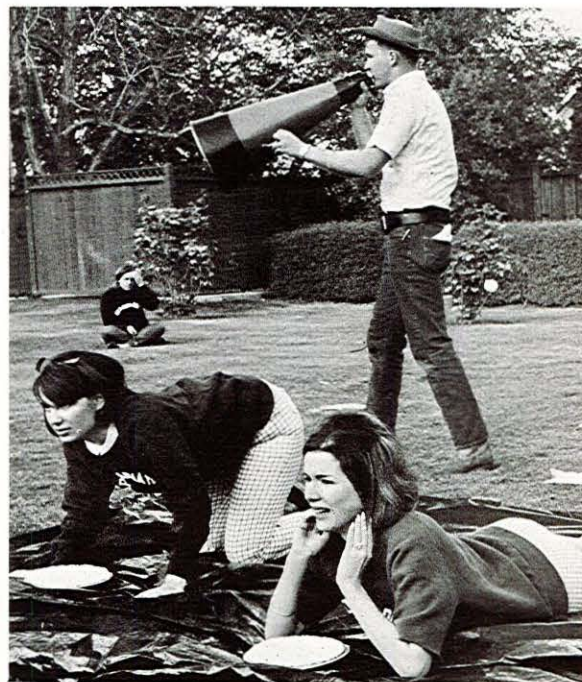


# Spring Brings . . .

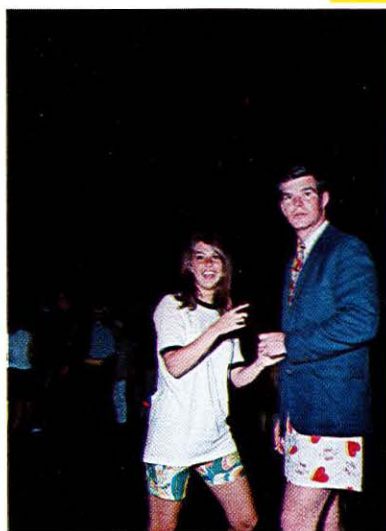
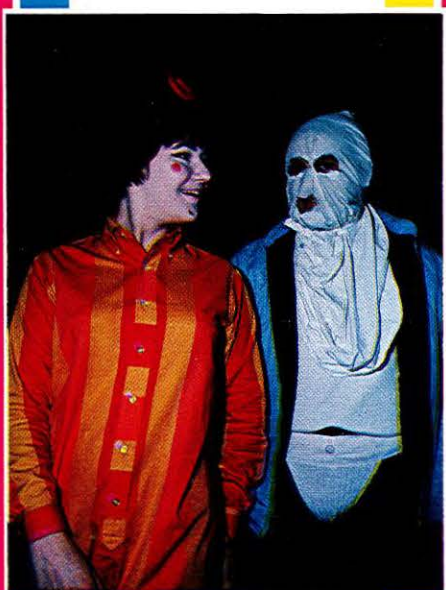




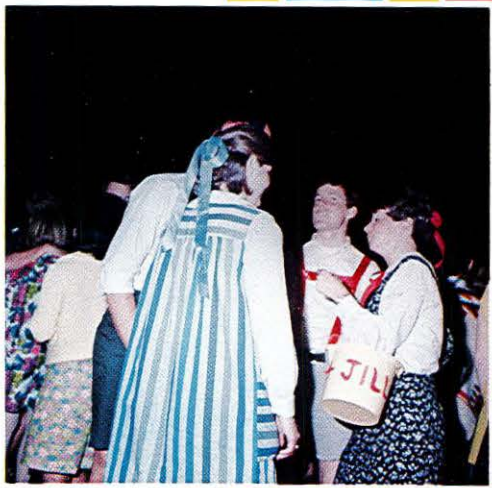
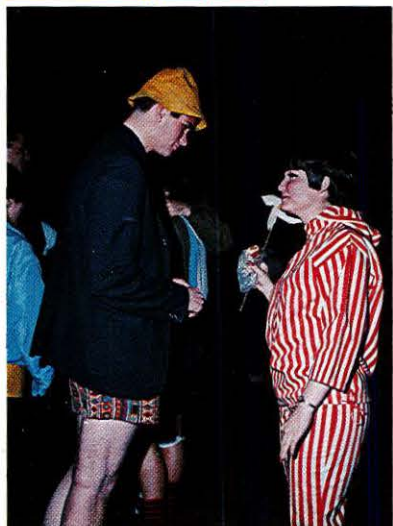
# Mardi Gras









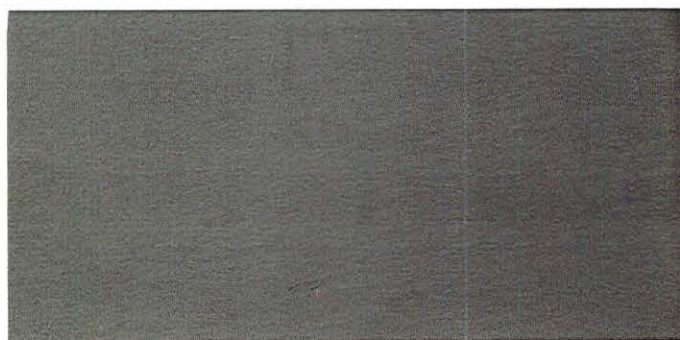
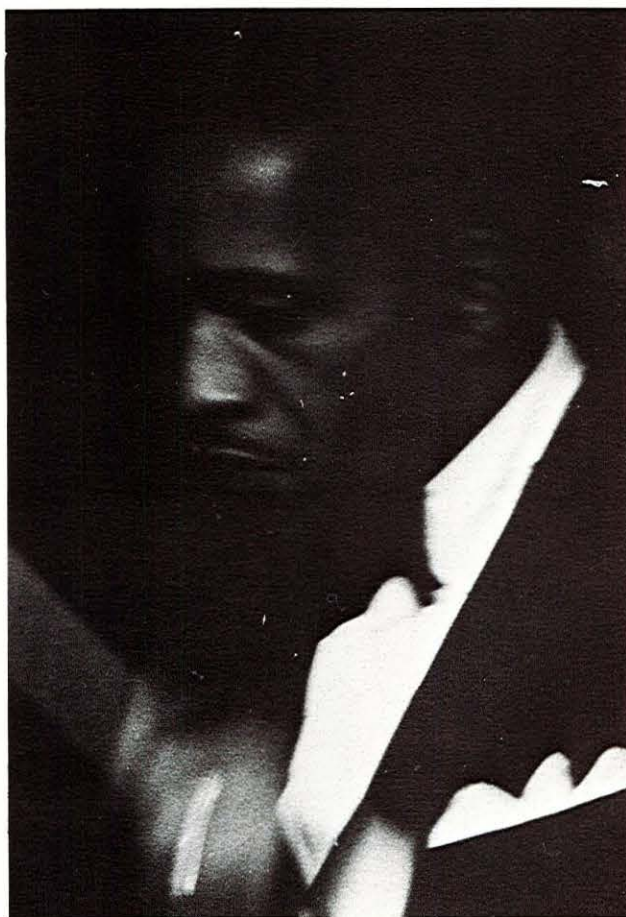






## The Modern Jazz Quartet









Brasil '66

# Sergio Mendes



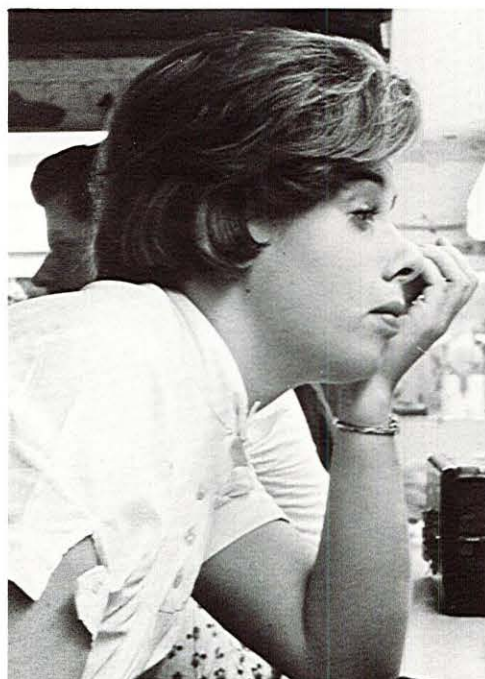




The Playbox production "An Ideal Husband" by Oscar Wilde.



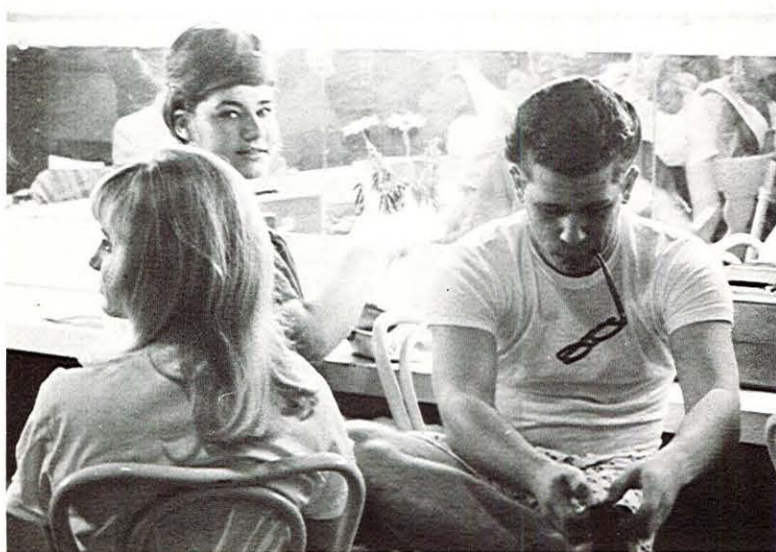
Pacific Playbox



Backstage

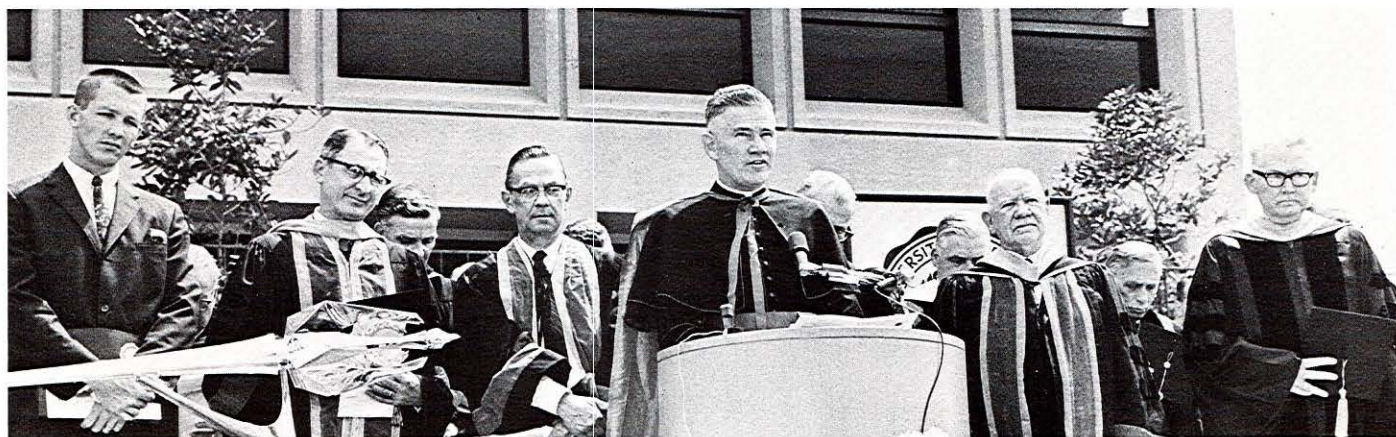


Strawberry Breakfast



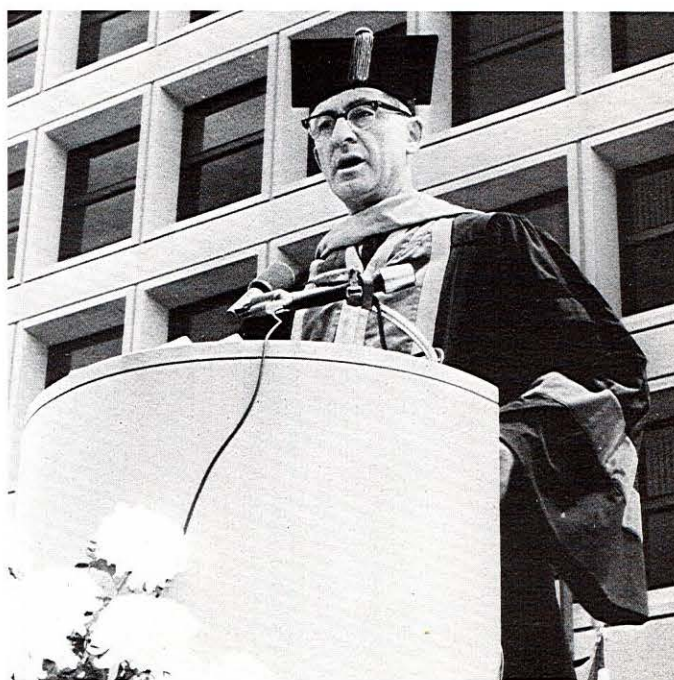


# Dedication of the School of Dentistry

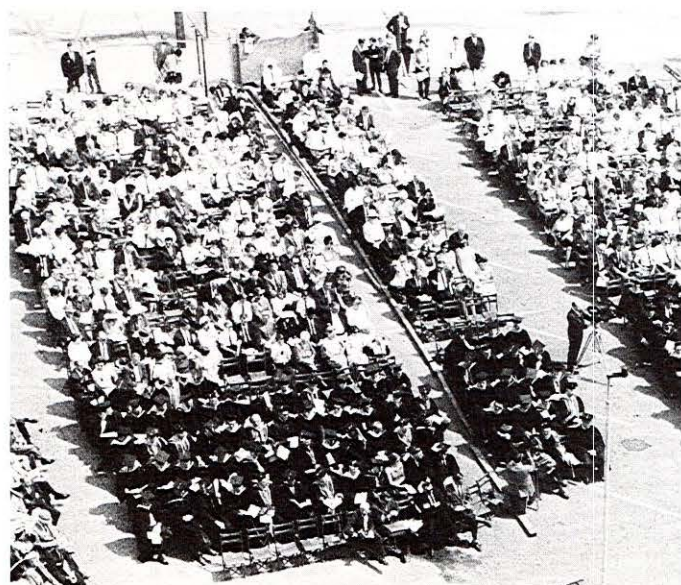


Invocation given by Right Reverend Monsignor Mark J. Hurley

On Sunday, May 7, 1967, the School of Dentistry of the University of the Pacific dedicated its new building. This building, located in San Francisco, provides a complete new facility and a new horizon for the dental profession. In this building, which is almost five times larger than the previous one, there is a precise balance of bold color swatches which, with the muted tones on the interior creates an exceptionally cheerful environment. In this new environment will evolve a new era of teaching, research and equipment. With these facilities, the practitioner of tomorrow will be prepared to meet the increasing needs of the society.

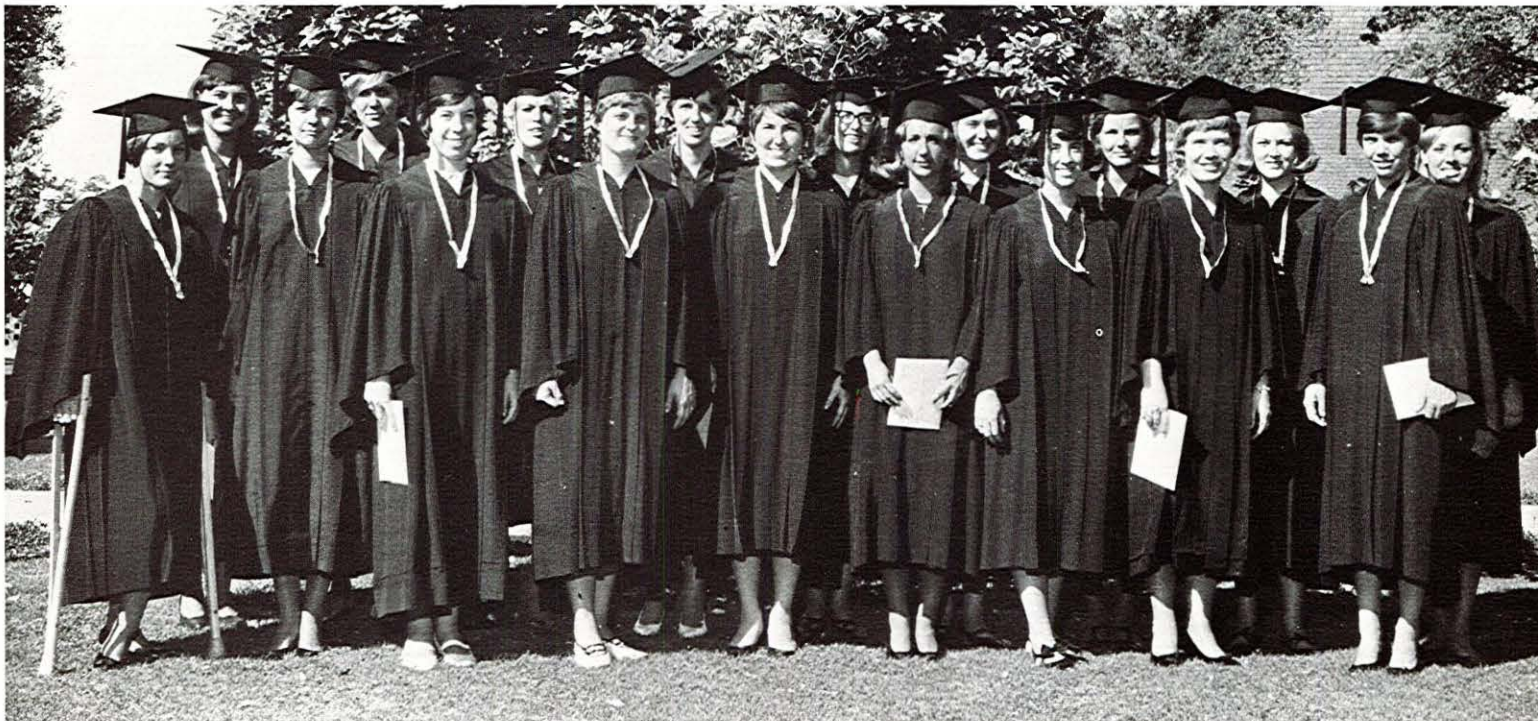


John Tocchini, Dean of the School of Dentistry

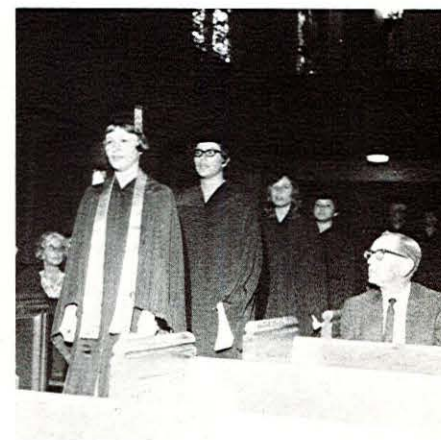
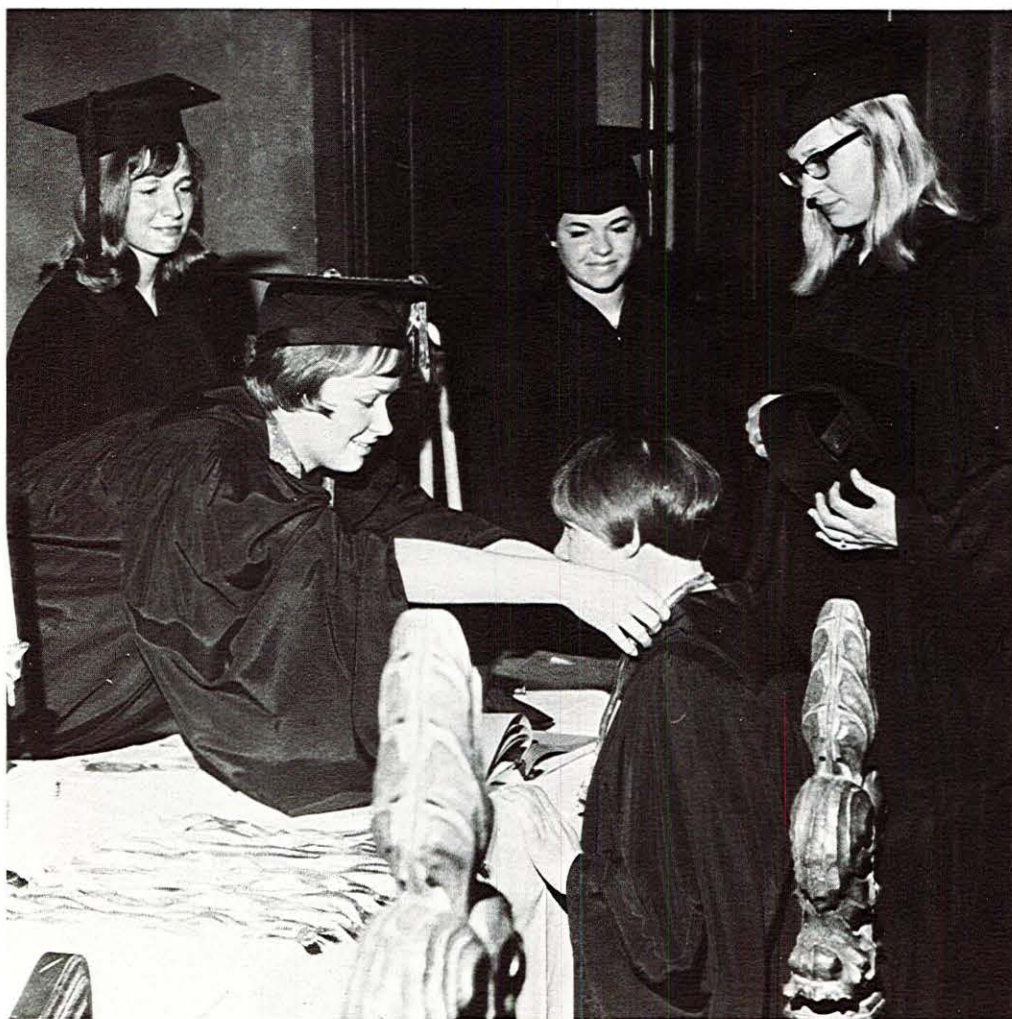




# Mortarboard Initiation

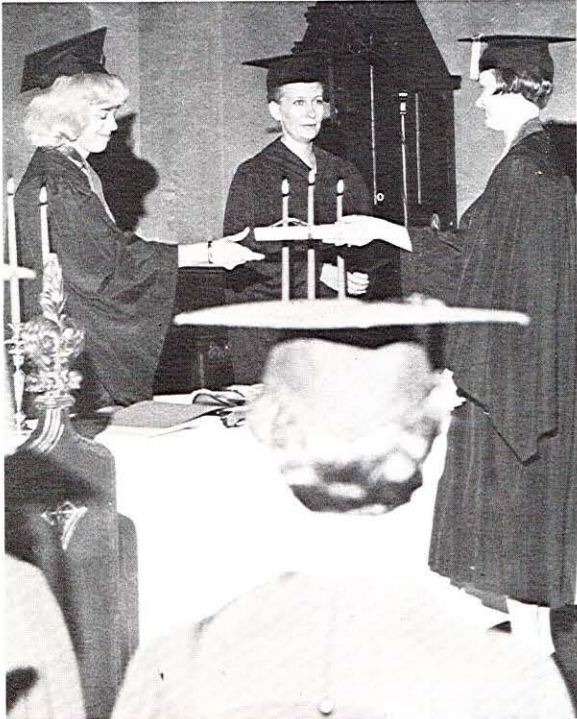


Front row, l to r; Susnn Wainwright, Patricia Snead, Claudia Merrick, Carol J. Wright, Mary Alice Fitzgerald, Kathy Shoemaker, Rebecca Fox, Sara Lee Mills, Lea Jamison. Row 2; Diana Haile, Paula Sheridan, Roberta Burch, Nellie Sieller, Priscella Wood, Sue Alsace, Marjorie Farr, Louise Gibbons, Margaret Meek.





# Mortarboard Initiation



Mary Osborne, President, receives the charter.



Mrs. Tully C. Knoles receives her honorary membership.

April 15, 1967, dated the culmination of over seventeen years of planning and anticipation by the Knoles of the University of the Pacific; the senior women's honor organization was initiated into Mortarboard, a national honor organization.

Named after Mrs. Tully Cleon Knoles, the widow of the late president and chancellor of the college, Knoles was founded in December of 1949. Its constitution and purposes paralleled those of Mortarboard. Since its founding the Knoles have annually corresponded with Mortarboard concerning application to the organization. Each year the reply has been "contact us next year."

Two years ago a different reply was received and the National Vice President of Mortarboard visited the campus. Last June the National Board accepted the Knoles' application, but the Board's acceptance was only the first step. To be initiated, Knoles also had to receive a 100 per cent affirmative vote from the six collegiate chapters in the far western district and a three-fourths affirmative vote from all of the 123 chapters in the United States.

This year's Knoles set about to print a petition booklet which included a history and information about the university, a history of Knoles, letters of recommendation, and information on the activities of each individual in the group. The petition was sent to each chapter of Mortarboard. After returning from Easter vacation the Knoles were very happy and honored to know that they had received the necessary three-fourths vote, and thus planning began for the initiation service.

The weekend of April 14-16 was declared a Mortarboard weekend. Friday evening and Saturday morning were filled with meetings and discussion of Mortarboard's activities and purposes. The discussions were led by Mrs. Edward Molton, the national treasurer of Mortarboard and Mrs. B. H. McAlister, the district officer.

At the initiation in Morris Chapel on Saturday afternoon, all of this year's Knoles were initiated as well as 25 alumni. Also initiated as honorary members were Mrs. Tully C. Knoles (who is now 89 years old), Mrs. Grace Burns, and Miss Catherine P. Davis.

An all-University banquet Saturday evening honored the new initiates. Miss Davis was presented with a silver dish from the group in appreciation for her time and effort to assist the Knoles' in being chartered as the 124th chapter of Mortarboard.







Newly initiated Mortarboard members: Row 1 (L to R): Mrs. Grace Burns, Angie Metropulos, Mary Osborne, Mrs. Tully C. Knoles, Snips Parsons, Charlene Brendler, Georgia Swain, Kathy Hincks, Chris Leave. Row 2: Miss Catherine Davis, Linda De Long, Marlowe Wilburn, Janet Beckwith, Lee Sue Curry, Paula Xantopoulos, Mari-lee Keislar, Linda Mack, Marian (Sheppard) Hansen, B. Beth Hoglen.



Miss Davis gets a thank-you kiss from Chris Leave.

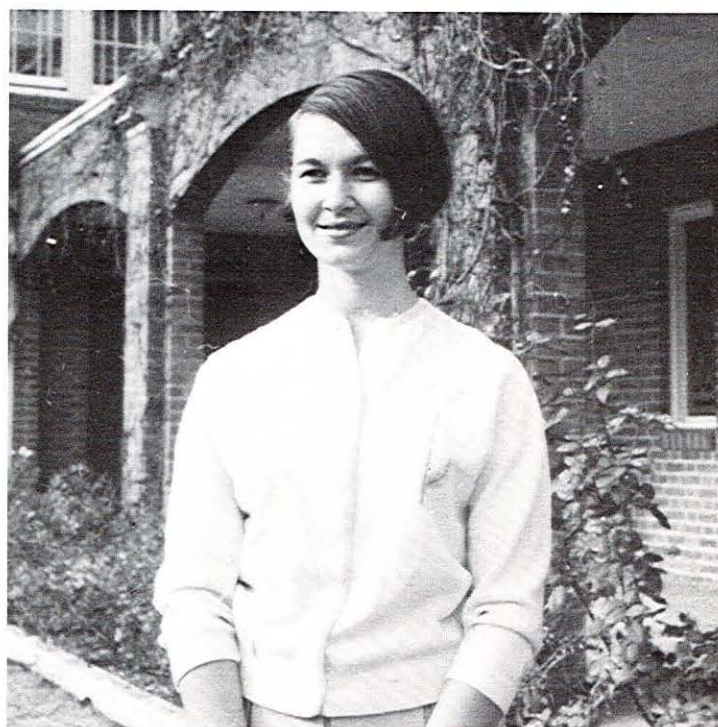




# Awards

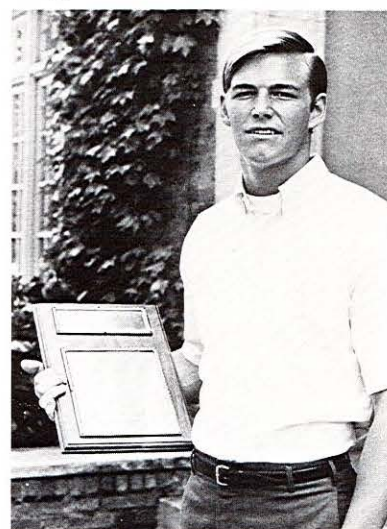


Gene Bigler, Outstanding Senior Man



Angela Metropulos, Outstanding Senior Woman

Other award winners not pictured: Jon Fox, engineering; Katrin Hartmann, modern languages; Jim Irwin, Allan Jokisaari, and Bob Lema, radio; Gennaro Palmento, music excellence; Chris Leave, Staffmark award in journalism; B. Beth Hoglen and Anne Clark, Brazelton—Harscom award for yearbook service; Allan Melikian, Eddie LeBaron Award for the senior football player with the highest grade point average; Jim MacKenzie, in swimming and water polo; Don Moroz, track; and Chick Willett, golf.



Mike Martin, Outstanding Freshman



Dr. Gary Brusca, Pacific Family Award

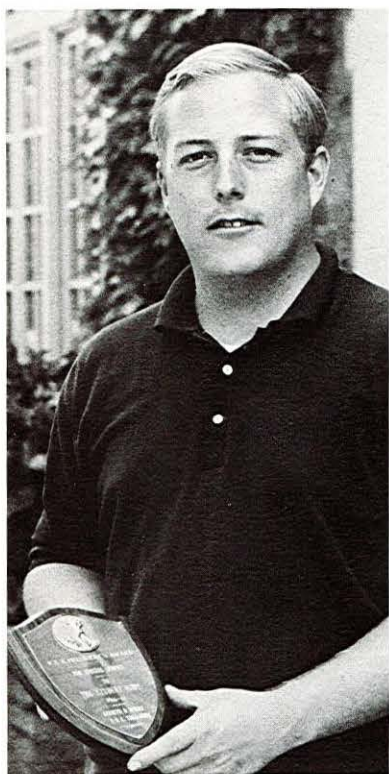


Paula Xanttopoulos, Boren Award for Journalism



Bob Harris, Staffmark Award for Journalism





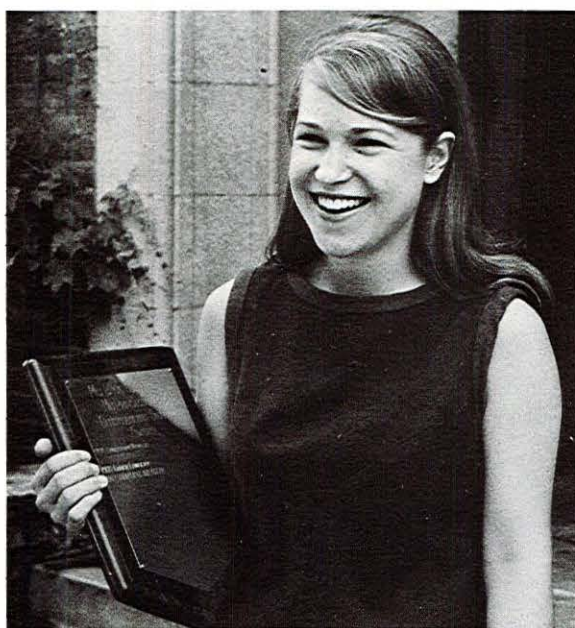
Ken Mowry, P.S.A. President's Award



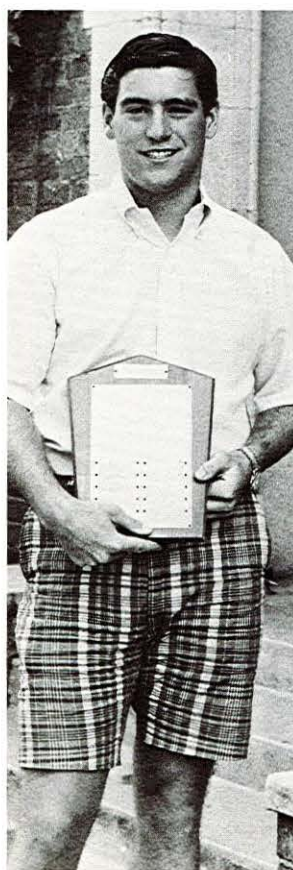
Mark Kusanovich, Senior Debate Award



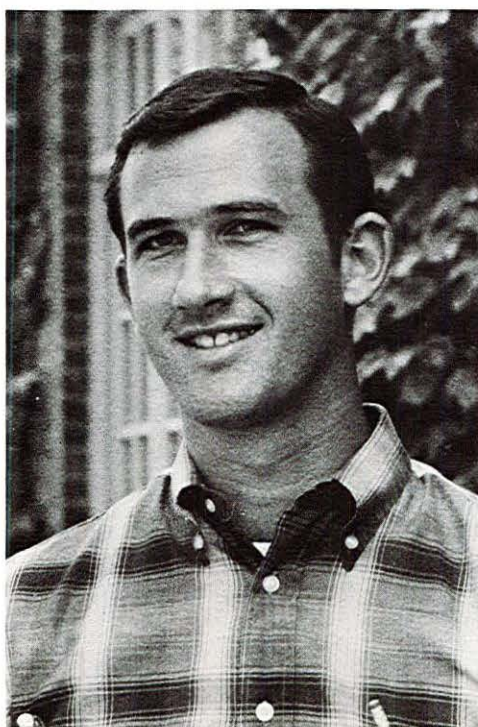
Philip Hinkle, Bible and Religious Education Award



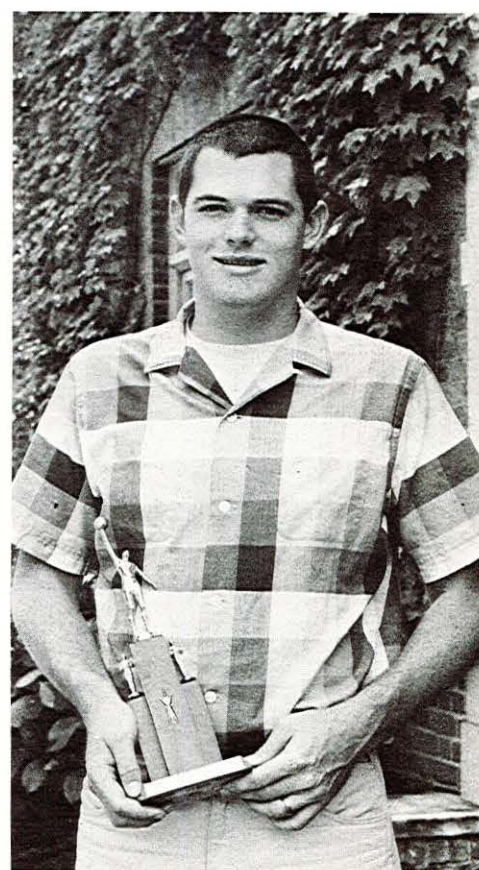
Charlene Brendler, Music Award



Fred Hilger, Wall Street Journal Award



Mike Noach, Galen Laack Award



Keith Swaggerty, Spirit of Galen Laack Award



# Sports Finale

Jersey number 32 will be laid to rest, and will never be worn again by a Pacific athlete. That jersey was the one worn by basketball All-American **Keith Swagerty** over the past four years.

Previously, only one jersey number has been retired, that being Eddie LeBaron's number 40. Even Dick Bass did not receive this honor, which shows that it is not thrown around to just anyone.

Swagerty broke or endangered every school and WCAC rebound and scoring record on the books. He was truly this era's greatest athlete and there is no one as deserving of this honor as Keith Swagerty.

The 1967 **track** team enjoyed a 10-2 season, but views this year only as a step in the right direction. With less than a half-dozen graduating seniors, the predominantly freshman team should return next year in an excellent position.

A new award, the Bob Heck Award, was presented to Don Moroz for outstanding participation in running events. Moroz also received the Captain's trophy. Ed Weisbrod received the most improved member of the team, while Rodger Mercier was presented the Earl Jackson Award as the most outstanding field participant.

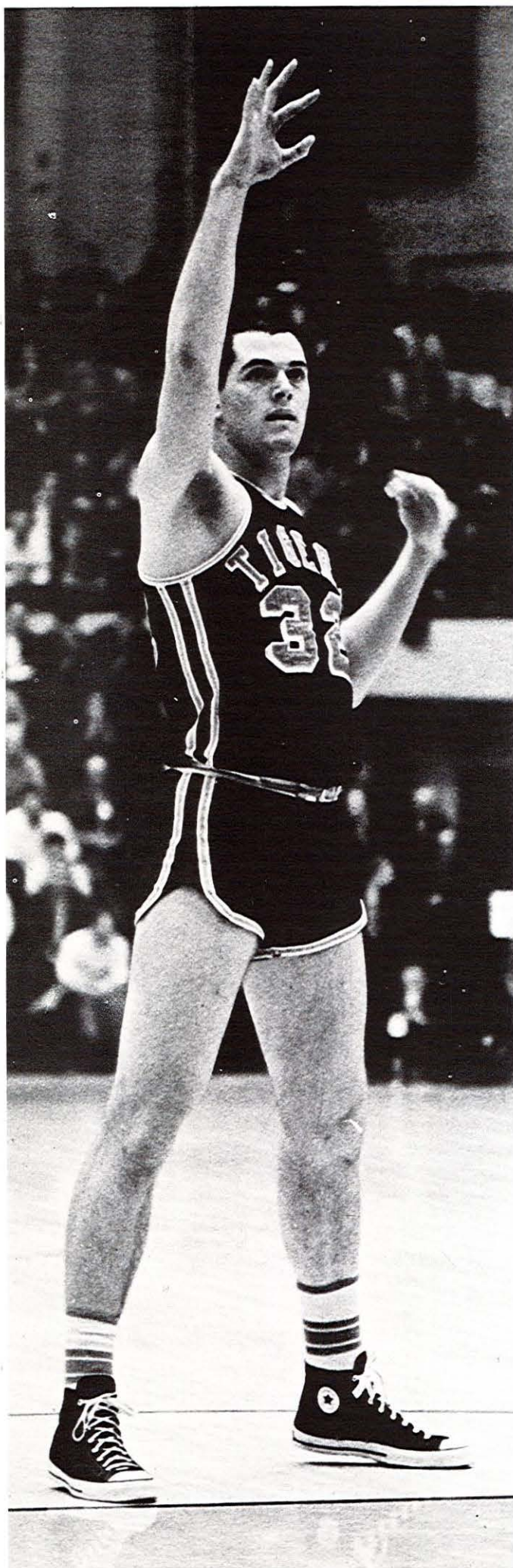
The Tiger **baseball** team of 1967 won 14 of the last 18 games, finishing with the most wins of any Pacific baseball team in history. Coach Stubbs was presented a trophy by his grateful team.

Baseball's Co-captain's trophy was presented to Terry Maple, John Strohmayer and Paul Glennon. Dave Scatena was named Most Improved Player, and Terry Maple received the Most Valuable Player Award. With the entire squad returning next year, Pacific should show a fine representation in the WCAC baseball conference.

After a slow start, the **tennis** team finished the season with a 3-12 record, winning the last two of their three matches. Vernon Altree awarded Carlton Penwell the Captain's trophy. The coach stated that prospects for next year look good with the return of all lettermen.

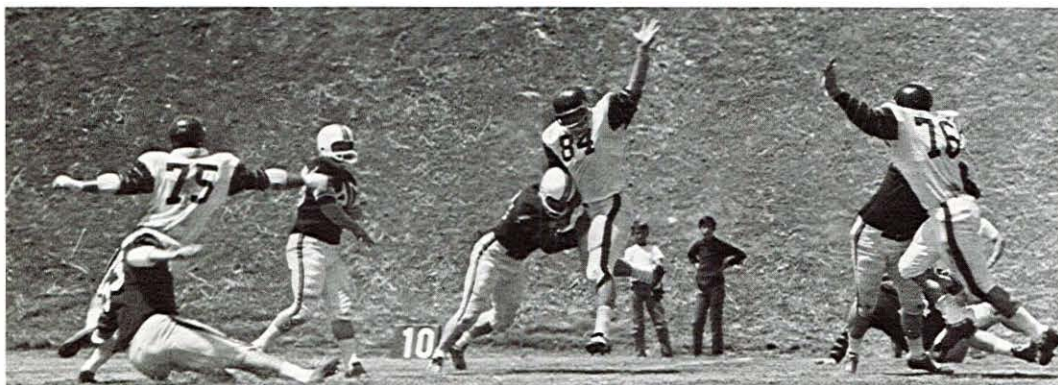
Jim MacKenzie, a four-year letterman in both **swimming** and water polo, and two-time All-American, was presented with the Captain's trophy. Joe Faull received the most improved swimmer award, while Phil Strick was named Most Valuable Swimmer. Rex Hoover also received recognition.

The winner of the Most Improved trophy for **golf** was Bill Holm. Lagelle Jeter was named the Most Valuable Golfer.



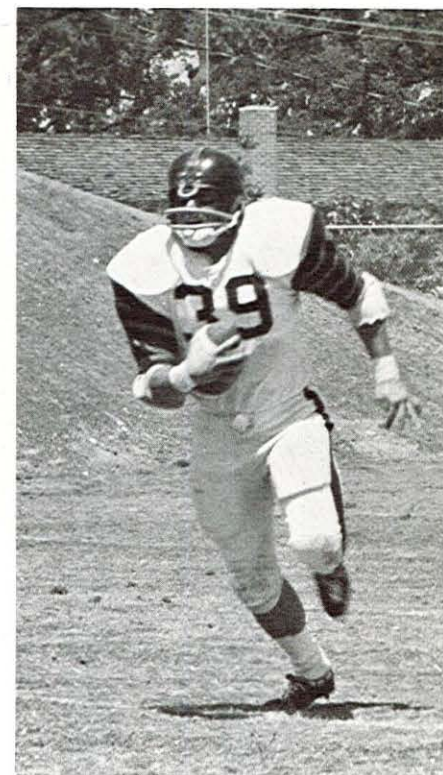


# Spring Football

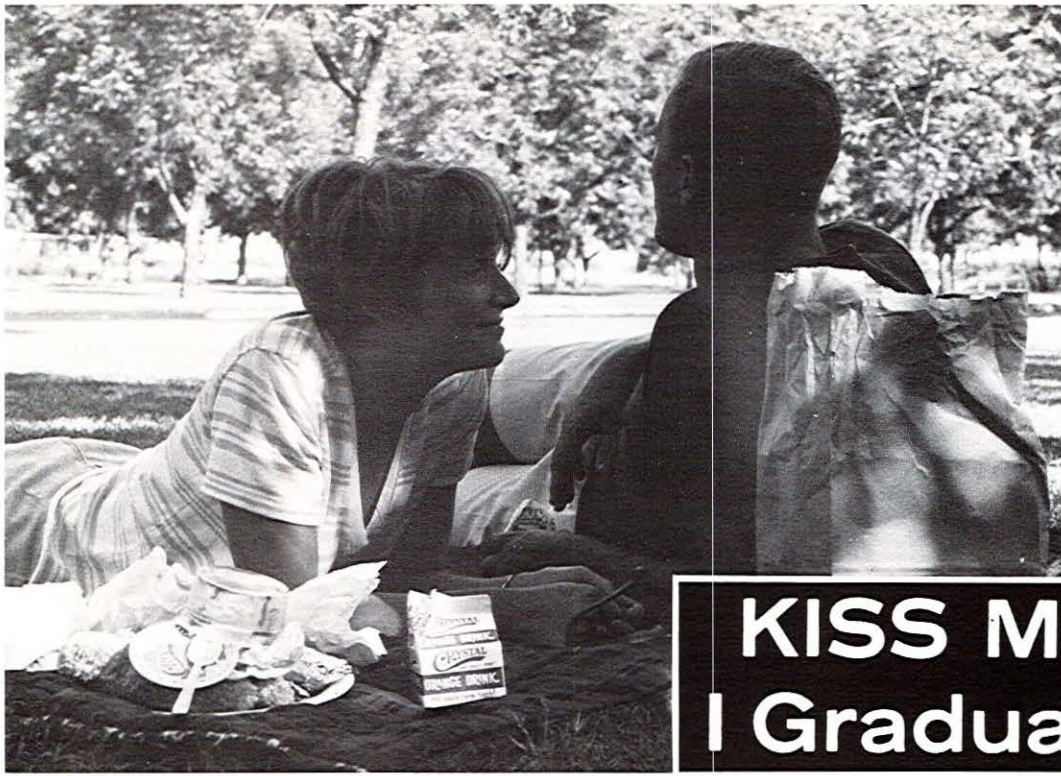


Alum Ben Parks put together a formidable ex-Tiger gridiron squad for the May 20 encounter with Coach Doug Scovil's new-look new-look '67 varsity team. And it was like seeing double for the alumni: Bergstrom (Randy) and Lee (General Bob) . . . the two sharp-passing quarterbacks winged enough TD's to wipe out a weary (the second half was cut short) set of older men 31-6. And Jack Layland, among other backs, moved for gigantic chunks of yardage. The varsity defense was tough, too.

But not tough enough to keep the great Eddie LeBaron down (still great nearly 20 years after his All-American performances as a Tiger). The ex-Redskin and Cowboy signal caller heaved a 75-yarder for a score early in the first half. (After that it was mostly run back the kickoff and hope for the best.) And everybody smiled to hear again the truly great names over the P.A. system: Urenda, Williams, Hector, and Hawkins and Woznick and Strain and Bass and Moose Meyers . . . it was a good day.







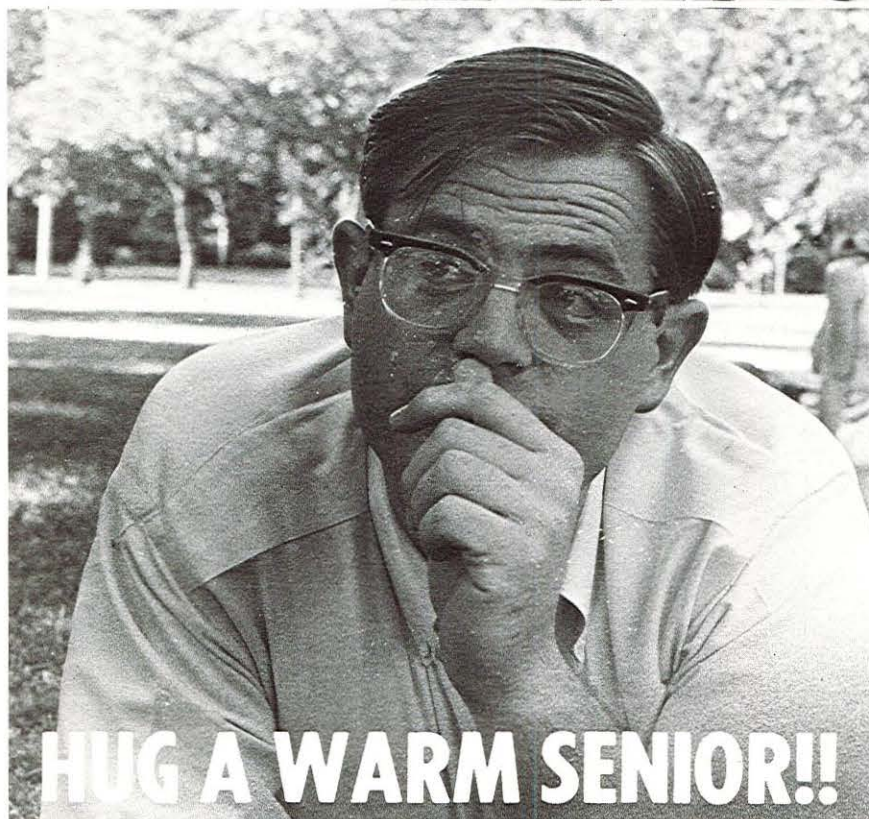
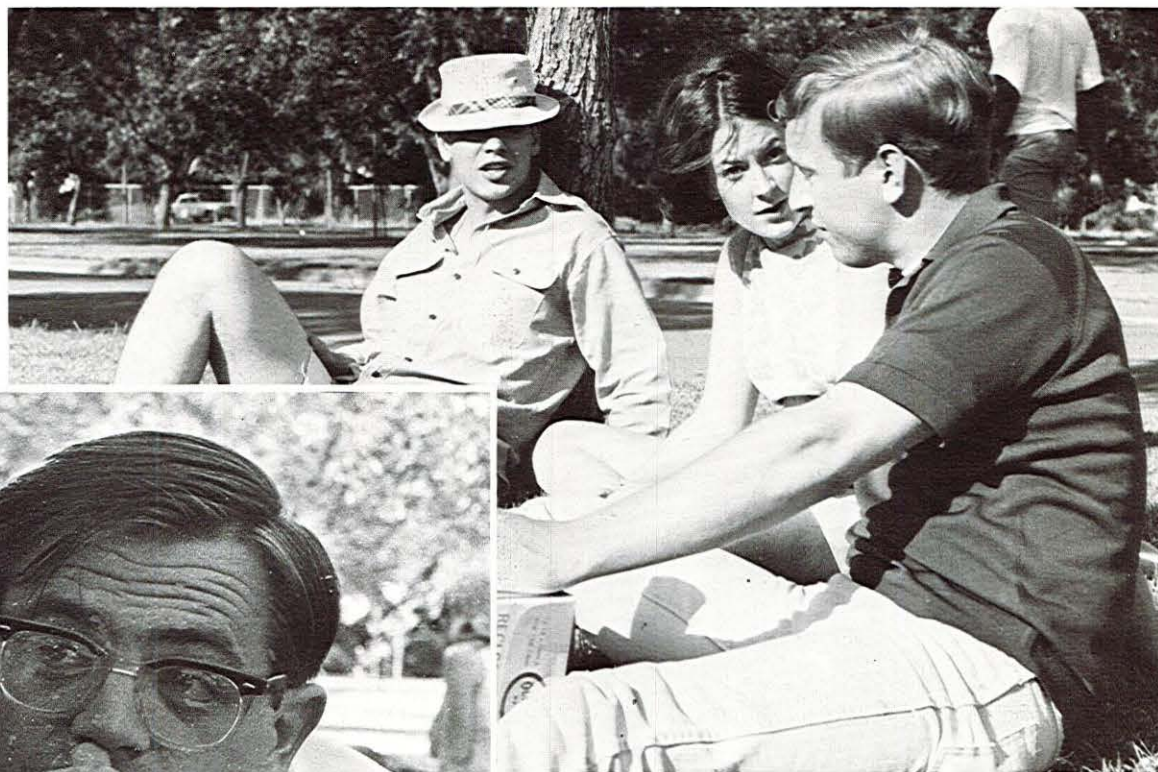
Finals  
Where  
What  
Senior

**KISS ME QUICK!!  
I Graduate in June**





over?  
to go?  
to do?  
**Picnic**



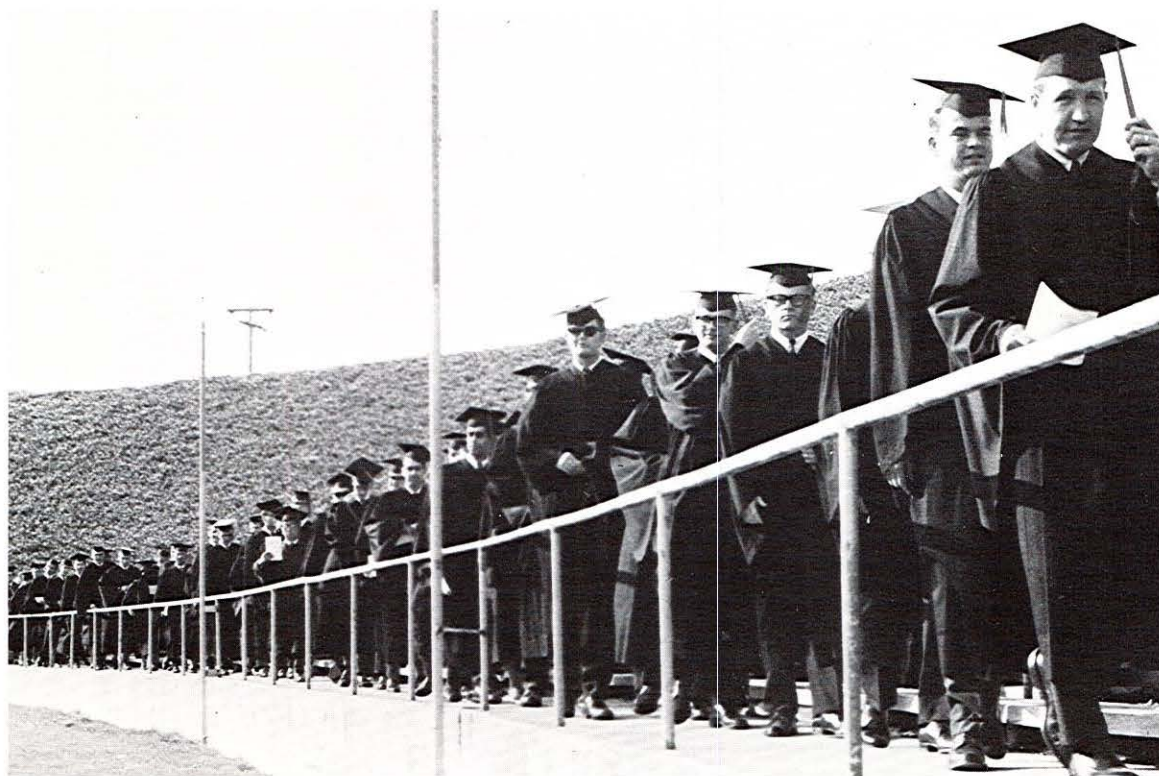
**HUG A WARM SENIOR!!**

**Avoid the  
Tuition Raise-  
GRADUATE!?!**





# Graduation



## Graduating with Highest Honors

Linda K. Mack  
Dorothy Joan Payne  
Francisco Melero Pastor



Angela Metropulos, Graduation Speaker



## Master of Arts

Anthony Vincent Avale  
Charles R. Baker  
Elizabeth Haines Blixt  
Virginia C. Bragno  
Sylvia Duncan Braheny  
Margaret Joan Byerly  
Robert Curran Carlson  
Robert Joseph Cossey  
Ezane McDow Crumb  
Elva Bernice Dale  
Lorene Kerns DeLoach  
Mildred Merle Dillman  
Carolynn Taylor Dodge  
Ruth Elliott  
Marjorie Berger Farina  
Gordon Franklin Fergusson  
Basil Aubrey Fleming, Jr.  
Herbert Henry Foster, Jr.  
Anne Mary Ganzer  
Donald William Gilbert  
Loretta Giles  
Donald Keith Gosnell  
Eloise Cheney Gregory  
Jerold David Gritz  
Sandra Ann Guffin  
Jon Michael Hagstrom  
Esther Viola Hallan  
Harry Edwin Hammer  
Arthur Wayne Hartgraves  
John Wilson Hawkins  
Barbara Elaine Helm  
Mae Lee Hill  
Ivan Eugene Hitt, Jr.  
Robert Charles Holmes  
Martha Elizabeth Jackson  
Richard Fred Jacobsen

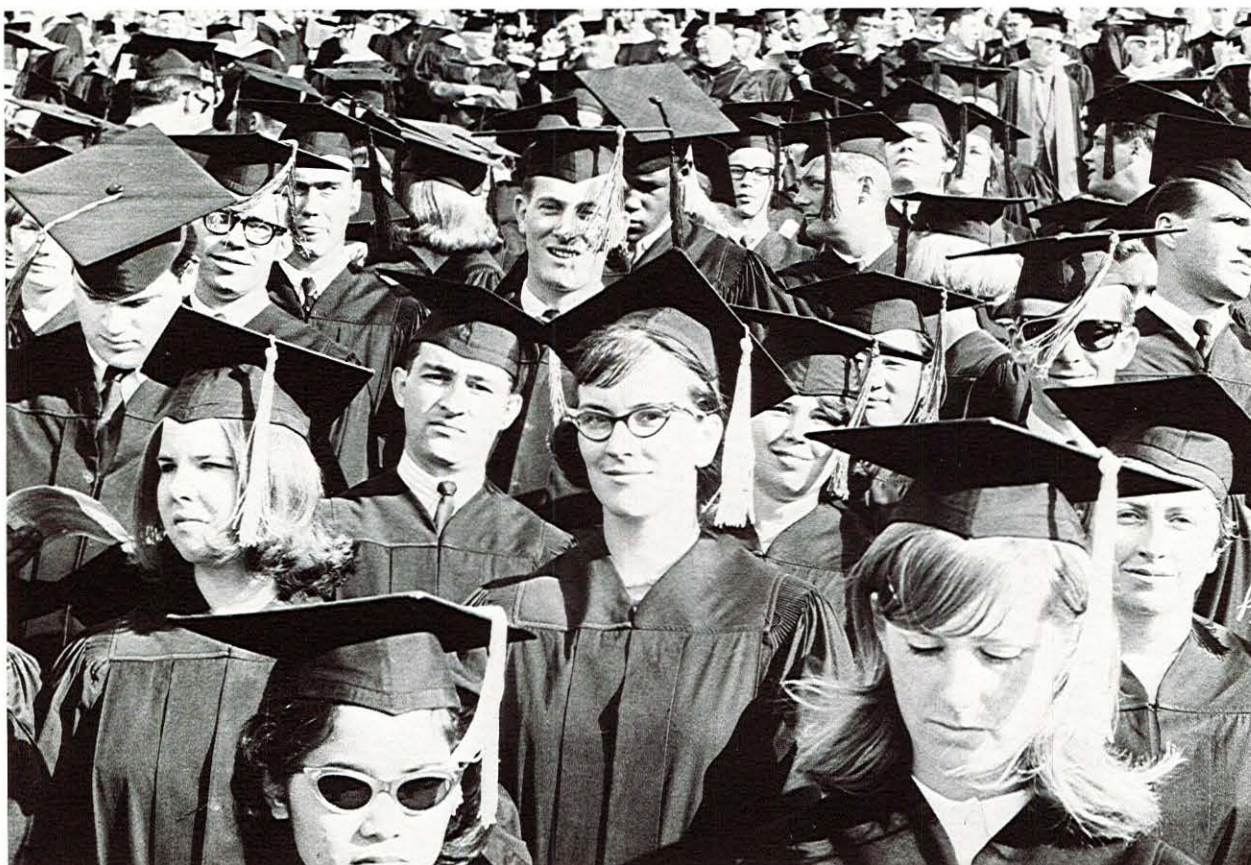
Dorothy Rose Joice  
Ivar Kent  
Gary James Lowes  
John Marfarlane  
Maria Ernesta Marchesi  
Polly Comstock Marliani  
Donald Wesley Martin  
John Francis McGuire  
Dean F. Mills  
Ellen Douglas Moule  
Carl Gustav Mueller, Jr.  
Nicholas Paul Padovan  
Charlotte Alice Peck  
Nancy Ann Peter  
Mary Morris Peters  
Neil Bowen Porterfield  
Jack R. L. Price  
Richard Maize Reed  
Helen Margaret Renshaw  
Harvey E. Robins, Jr.  
Cecile Elizabeth Russell  
Lawrence Allyn Scadden  
Michael Morris Schadeck  
Eunice Sarah Silva  
Mary Marjorie Silva  
Donald Robert Smith  
Marvin Lee Sohns  
Edwin Carl Sowash, Jr.  
Gerald Monroe Streeter  
Robert Hanen Taylor  
Eve A. Wasilchen  
Carolyn Carson Wilson  
William Carson Wilson  
Gary Roeder Wyckoff  
Paul Myron Wydysch  
Edythe Haanstra Zancanella



# 1967



# A Beginning



## Graduating with High Honors

Frances Elizabeth Salvetti  
James Edward Jacobsen  
Ross W. Atkinson  
Linda Branson Byrd  
Lee Sue Curry  
Karl Kenneth Harris  
Frederick Lee Hilger, Jr.  
James Montgomery Hughes  
Christine Leave  
Angela Metropulos  
Jeffrey Starr Nelson  
Barbara Jean North  
Efstratios Gregory Righellis



Curtis Kip Roebken  
Marlowe Kay Wilburn  
Beth Williams  
Janet Louise Beckwith  
Fernando E. Zumbado

## Specialist in Education

Peter William Marinovich

## Doctor of Education

Joseph William Corbin  
Ronald Dean Lepke  
Eugene Frederick Maxwell

## Doctor of Philosophy

Gerald Brady McCauley  
Michael John Millam

Anne Wonders Passel  
Joseph Martin Reyes

## Master of Music

Frederick David Giggy  
David Haskell Johnston

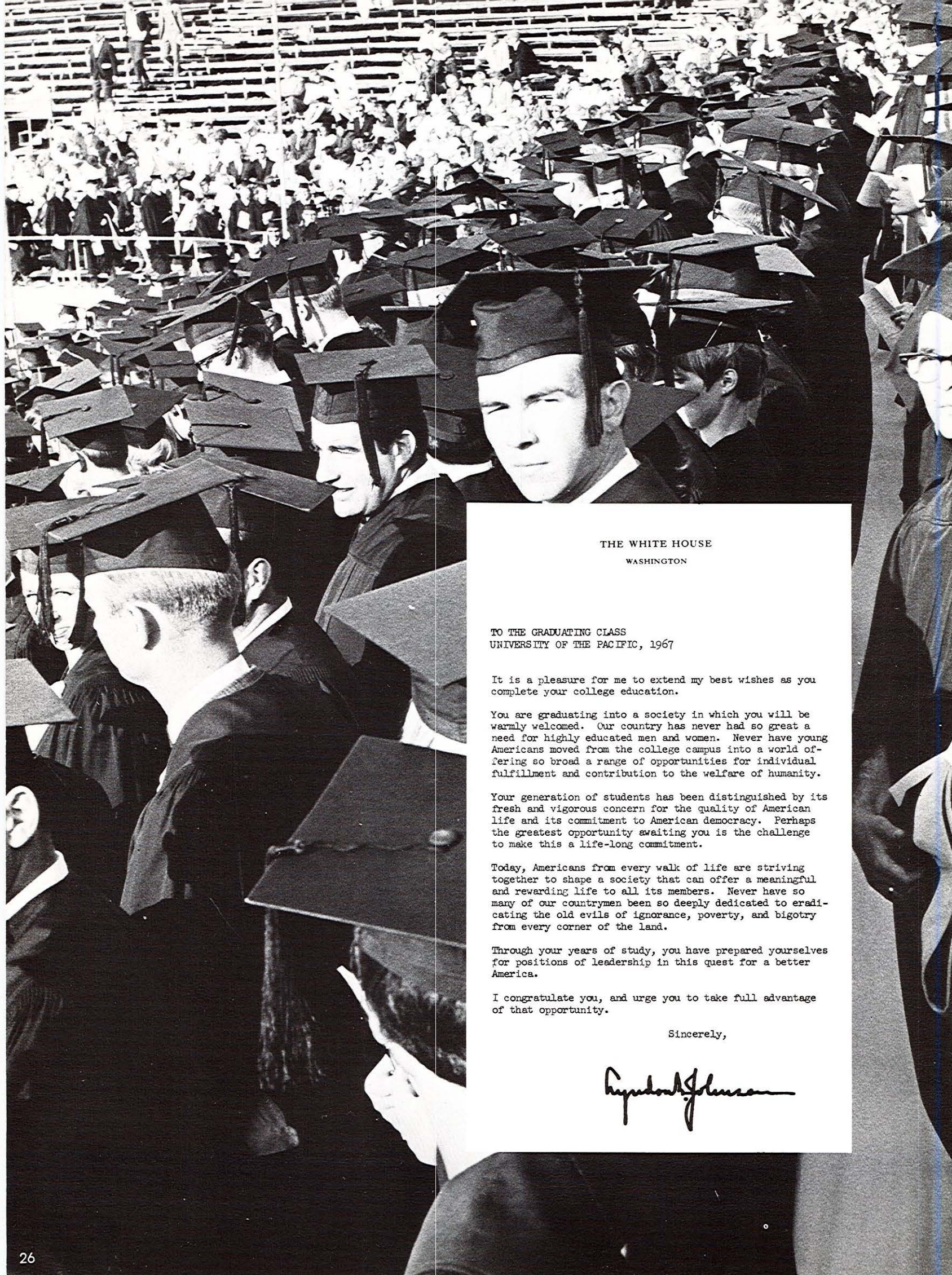
## Master of Science

Ramesh Narmadashanker  
Acharya  
Tapan Banerjee  
Arthur B. Eikenberry, Jr.  
Billy Edwin Farley  
Charles Stetson Greene  
John Thomas McCloskey

## Doctor of Pharmacy

Robert M. Belluomini  
Richard Hill  
Jean Fue Wong





THE WHITE HOUSE

WASHINGTON

TO THE GRADUATING CLASS  
UNIVERSITY OF THE PACIFIC, 1967

It is a pleasure for me to extend my best wishes as you complete your college education.

You are graduating into a society in which you will be warmly welcomed. Our country has never had so great a need for highly educated men and women. Never have young Americans moved from the college campus into a world offering so broad a range of opportunities for individual fulfillment and contribution to the welfare of humanity.

Your generation of students has been distinguished by its fresh and vigorous concern for the quality of American life and its commitment to American democracy. Perhaps the greatest opportunity awaiting you is the challenge to make this a life-long commitment.

Today, Americans from every walk of life are striving together to shape a society that can offer a meaningful and rewarding life to all its members. Never have so many of our countrymen been so deeply dedicated to eradicating the old evils of ignorance, poverty, and bigotry from every corner of the land.

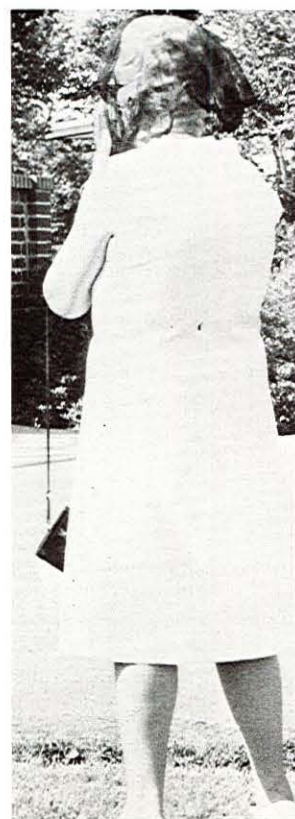
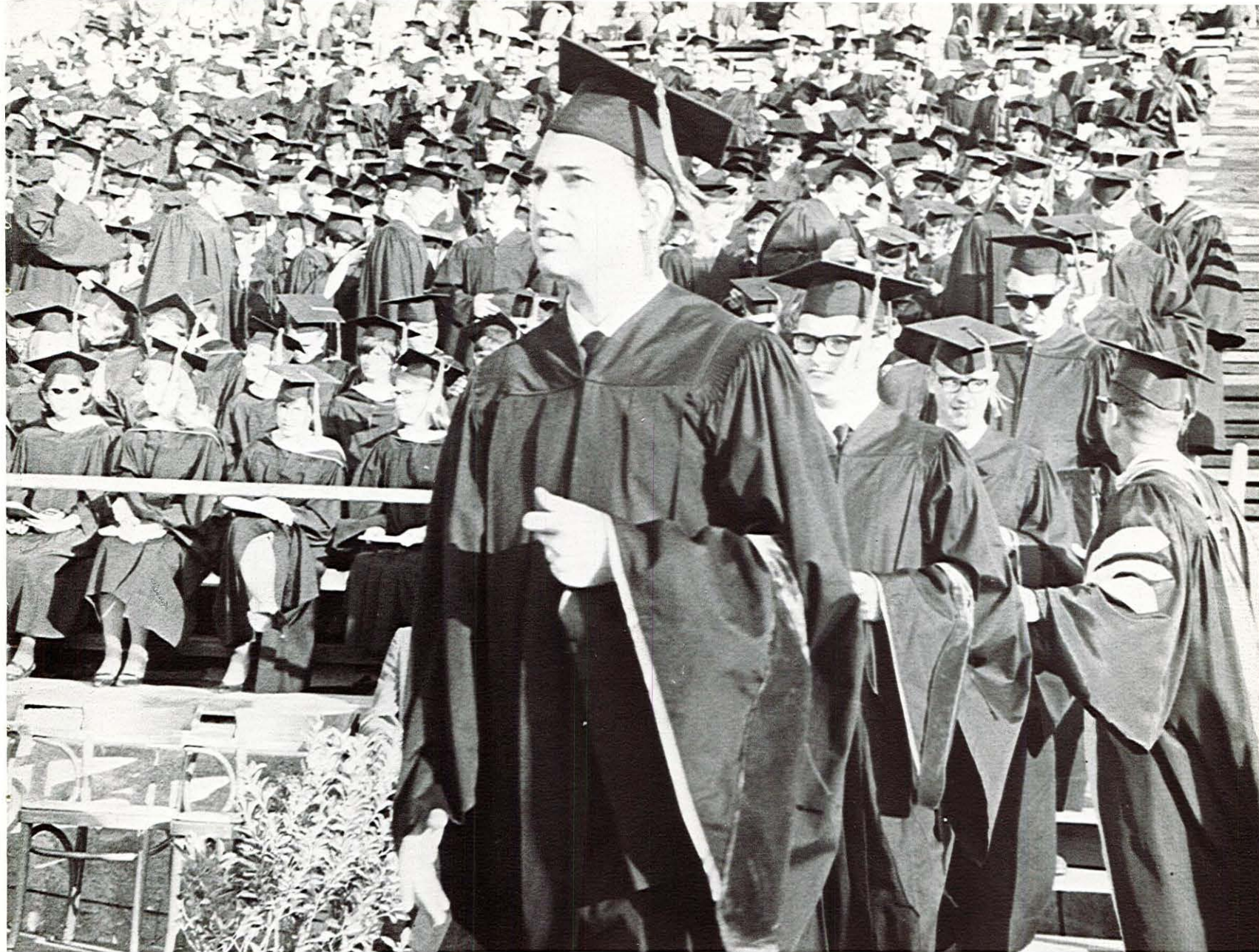
Through your years of study, you have prepared yourselves for positions of leadership in this quest for a better America.

I congratulate you, and urge you to take full advantage of that opportunity.

Sincerely,

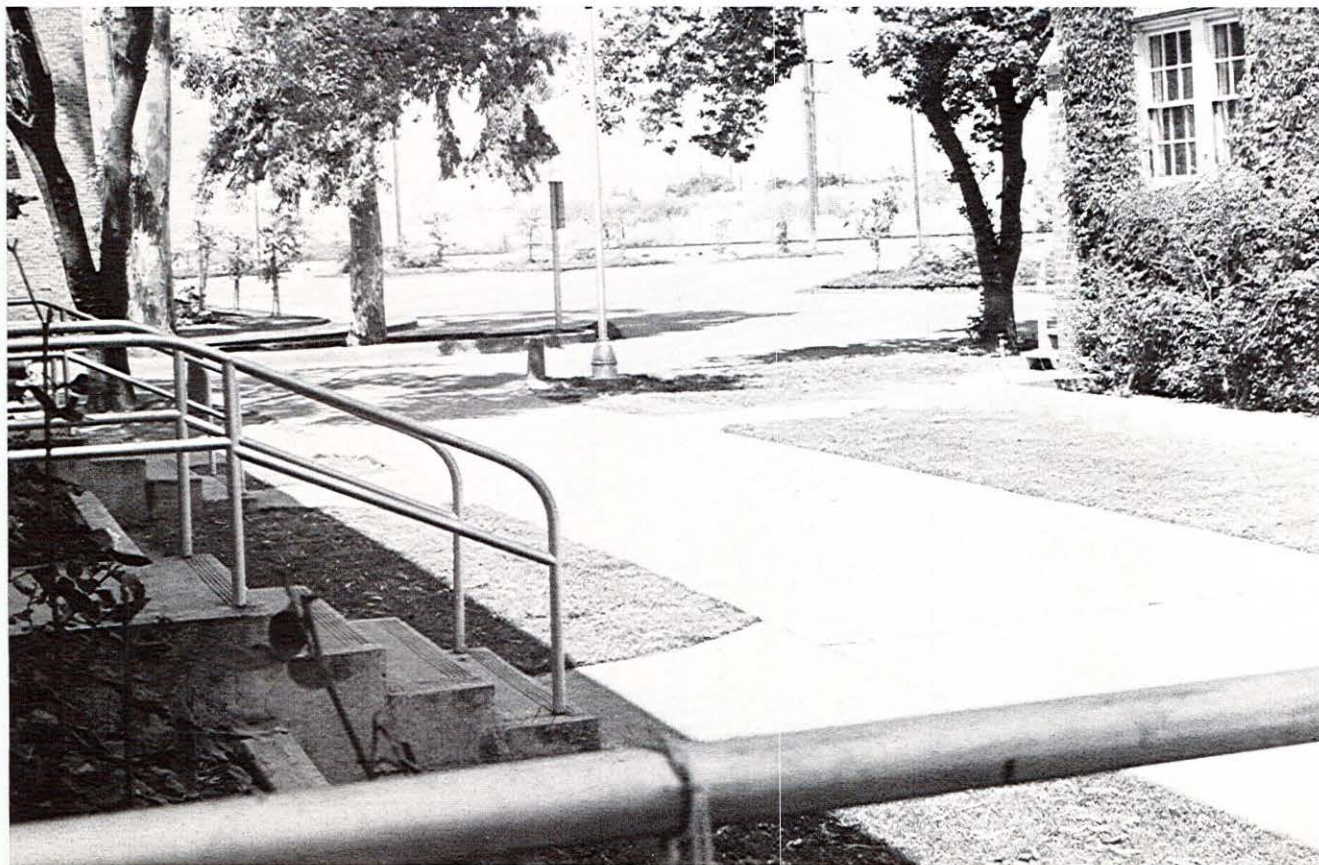
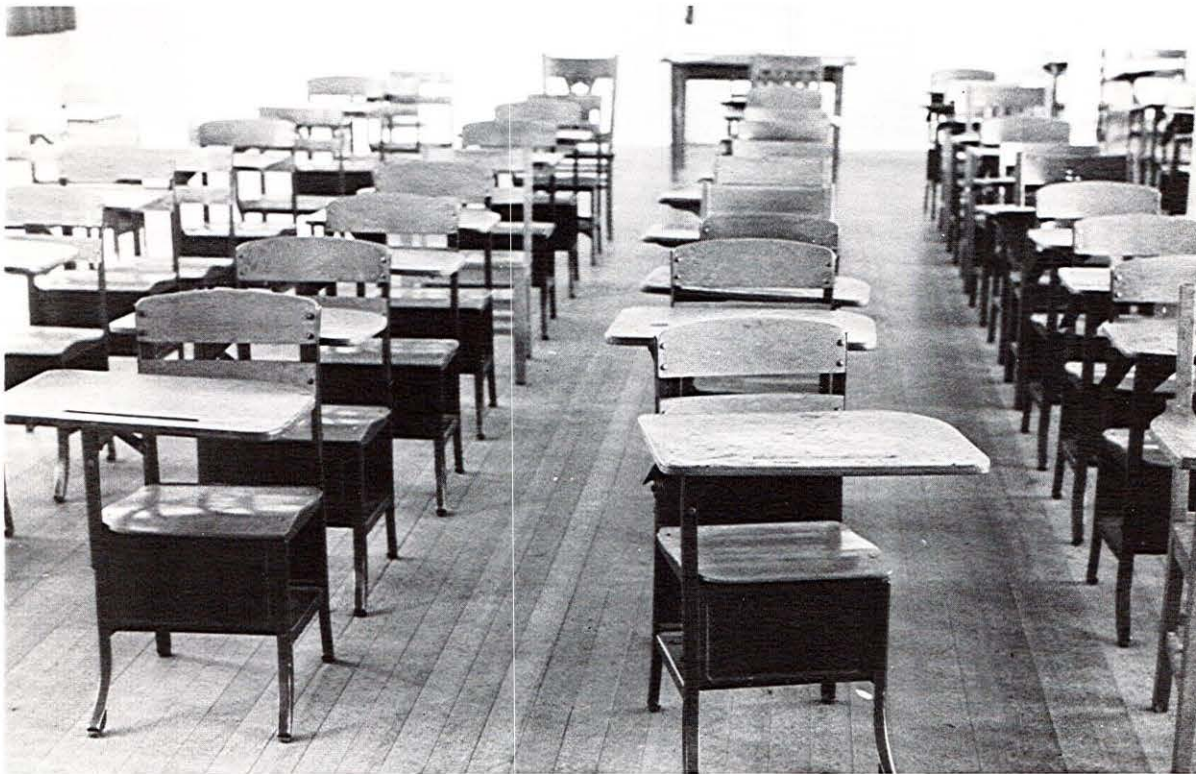
*Lyndon B. Johnson*



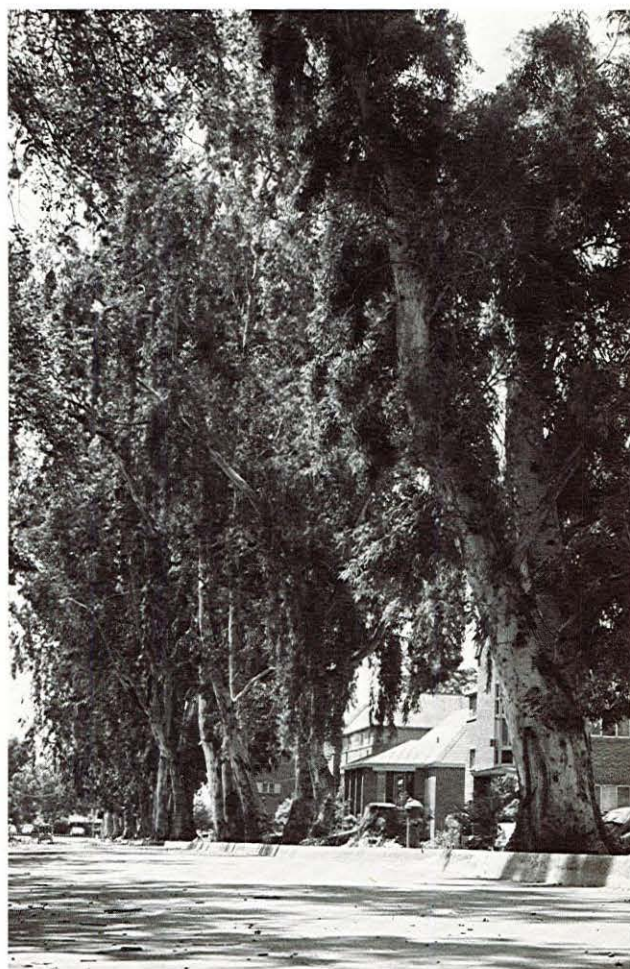
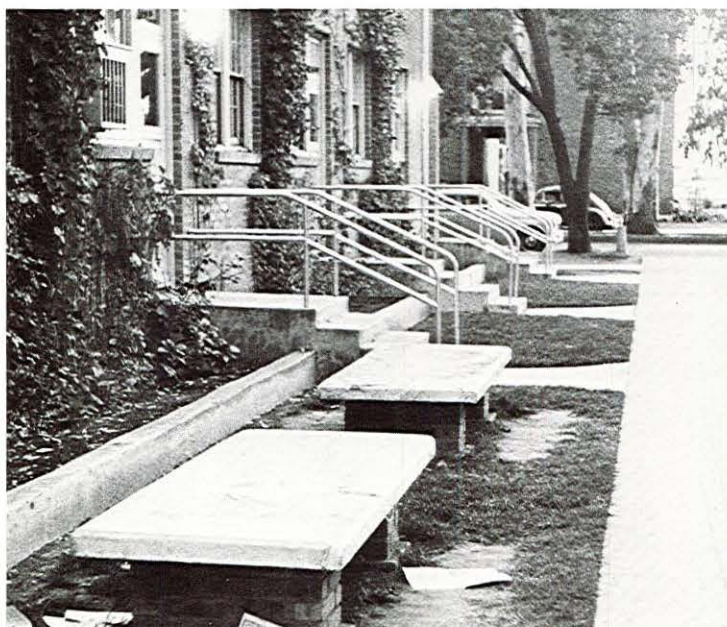




# Spring Brings . . .







The End



# Pacific Student Association: Preview

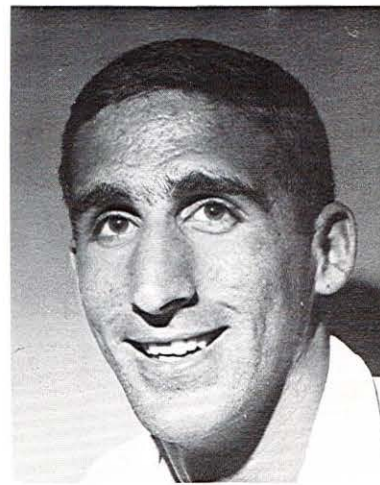
**Jim Meyers, President**



**Bill Moon, Rally Commissioner**



**Bob Fields, Vice President**



**Sue Griswold, Secretary**



The Pacific Student Association welcomes you to Pacific, a University that is on the move. During the past few years the University of the Pacific has evolved from a quiet college to a University that is expanding rapidly with new facilities and challenging ideas.

The PSA is working for student involvement in the educational process, and the major emphasis of this year's administration is focused on this goal. However, any University is only as great as it's students are willing to make it. As part of this student body which is becoming increasingly aware of it's role and importance in a growing Pacific, you will be asked to contribute to your University by being interested in your education.

Of course there are many facets of education which are not obtainable in a classroom. Pacific offers many opportunities for individual expression through involvement in various activities.

Anyone with questions, criticisms, complaints, or ideas is welcome in the PSA, office. Welcome to Pacific, a University on the move.

**Pete Hopkins, Treasurer**



## Pacific Hail

From o're the rugged mountains  
Standing high;

From out the broad low valley,  
'Neath the sky;

Our Alma Mater calls,  
We cannot fail,

Our voices blend in praise  
Pacific Hail! Pacific Hail!

Long may her flaming torch  
Give out its light;

Long may her spirit guide us  
In the right;

To her we pledge our hearts,  
We dare not fail;

To her we raise our song,  
Pacific Hail! Pacific Hail!





Bobbie Burch, AWS President

The women at Pacific are represented by their own branch of student government, the Associated Women Students, with Bobbie Burch as president for 1967-68. The function of the AWS is to coordinate the women's activities on campus and to be responsible for the rules and regulations governing hours and privileges for women students. In addition, AWS sponsors a wide variety of activities on campus. Included in these activities are Big'n Little Sister Parties, the program for Women's Day, the Spring Convocation, and the Winter Formal.

Through the work of the PSA Senate and its subordinate organizations, students are gaining an ever-increasing voice in the decisions of the University. The revision of women's dress rules and establishment of the Ad Hoc Committee on the Selection of the Academic Vice-President in 1967 are two important examples.

The cluster colleges, besides being represented in the PSA Senate, have their own intra-college student associations and court systems.



Dana Nye, Social Commissioner



Steve Brydon, Academic Standards Commissioner



Frank Strauss, Communications Commissioner

We hope that during your years at Pacific, most of you will decide to participate actively in student government. Whether this is the case or not, we hope that you will at least take an active part in electing and supporting those who do make the decisions on behalf of the student community.

Every student at Pacific will eventually become a member of the Pacific Alumni Association. The Student-Alumni Coordinator, chosen by the Alumni Association, helps to plan such activities as the alumni speaker series, Sunday evening dinners for students and members of the faculty, and the picnic for graduating seniors. Through the leadership of Carol Covington, a senior, additional activities will be organized and thus the relationship between the students and alumni will increase.

The student courts operate so that the students themselves may regulate the social and academic codes, and insure that breaches of either code are punishable in a manner prescribed by students. Each living group is responsible for setting up a court to deal with the infractions within. The Social Courts hear cases involving such things as drinking on campus, destruction of University property, and disturbing the peace. Punishment is levied in the form of fines, work hours, probation, and, in some cases, dismissal from the University.

The Academic Courts, structured in the same way as the Social Courts, hear cases involving infractions of the Honor Code, cheating, and plagiarism. The Academic Court may levy fines, lower grades, give work hours, or suspend or expel students.

The Supreme Court of UOP, the appellate division, has the power of judicial review. Any student who was not on probation for at least one semester may apply for a position on the court.

Supreme Court Chief Justice—Lee Bud West

Social Court Chief Justice—Jim Irwin

Academic Court Chief Justice—Jon Brown

Four committees operate within the Academic Standards Commission. The Public Events Committee is responsible for publicizing the cultural events of the University. The Honor Code Committee promulgates an attitude of integrity and pride in all academic work, an attitude that is an integral part of the serious student's concept of education and the community.

Student-Faculty Relations Council seats an equal number of students and faculty, with the chairmanship alternating between the two groups. Finally, the Academic Standards Committee is charged with overseeing the functions of the commission and charting the development of ideas from the various other committees of the Commission.





**Richard Williams, Dean of Men**



**Dr. Robert Burns, President of the University**



**Cathrine Davis, Dean of Women**

#### STATEMENT FOR FRESHMAN HANDBOOK

College students today range from able to mediocre, idealistic to practical, naive to sophisticated, rich to poor; they are of all races, of all faiths—and of no faith. Whatever the range of individual differences in the freshman class you are now joining, no one at the University of the Pacific has fixed a classification on you that will hamper your academic pursuits and maturing process. In every way, you will bring an identification to yourself by your individual performance as measured by the standards to which the University is committed. Your purpose should focus on the exciting prospects of broadening your understanding and deepening those commitments through knowledge that are best suited to helping you carry out a useful and satisfying life. The ingredients are here, on this campus, throughout this academic community. It is an opportunity to be cherished. You are at the starting point of one of the most formative and challenging experiences of your life. We welcome you to Pacific, its traditions, its aspirations, its purpose of which you are now an important part because from this moment forward, you will be identified with and represent the University of the Pacific. We are proud to have you join with us in what is intended to enrich your life and enlarge your potential which is the most satisfying reward your faculty now strive to bring to you.

ROBERT E. BURNS  
President



**Berndt Kolker, Provost Raymond College**



**A. J. Cullen, Provost Covell College**



**Harold S. Jacoby, Dean of College of the Pacific**



**Edward Betz, Dean of Students**



**Lawrence Jackson, Provost Cal-lison College**



Since its beginning, Pacific as a church-related university has taken an interest in the spiritual development and the religious life of its students. Nearly all of the major religious denominations maintain contact and many provide an official campus representative. The several religious groups on campus represent a wide variety of religious thoughts. These groups are generally supported by the local churches, many of which also maintain special programs for the students on an off-campus basis. In addition, the Dean of the Chapel is available to offer counseling or to help you find your place in a local church.

It is also the duty of the Dean of the Chapel to organize chapel worship. Chapel services are held every Tuesday at 11 a.m. Though non-compulsory, these services have been well attended. Dean Lawrence Meredith, attempting to stimulate religious thought, customarily brings in a wide variety of speakers. Among last years, for example, were Playboy's Associate Editor, Anson Mount; LSD mystic Dr. Timothy Leary; and Death of God theologian Thomas Altizer. In addition Dean Meredith has presented many provocative formats featuring jazz quartets, folk music, and rhythm and blues bands. The closing service featured "The Gospel According to Peanuts" and Charles Schultz.

In 1879 the YMCA began an association with Pacific which has survived and grown to the present day. Since 1934, the YMCA has been combined with the YWCA in a joint effort. Anderson Y provides a campus center where all students may get together in a warm and friendly atmosphere for discussions or just to sit and read. Coffee and doughnuts are sold every morning Monday-Friday, and a wide assortment of magazines and newspapers is available. All of the facilities of the Y are open to any student who wishes to use them seven days a week.

The Cinema Arts Festival will provide many excellent films from a number of countries. Such films as Zorba the Greek, Juliet of the Spirits, Umbrellas of Cherbourg, To Kill a Mockingbird, Night Games, Guns of Navarone, Knife in the Water, A Shop on Main Street, Spy Who Came in from the Cold, The Pawnbroker and others will be shown. These may be seen in the new theater of the Academic Facilities building. A full schedule of the films and season tickets are available at the Y.

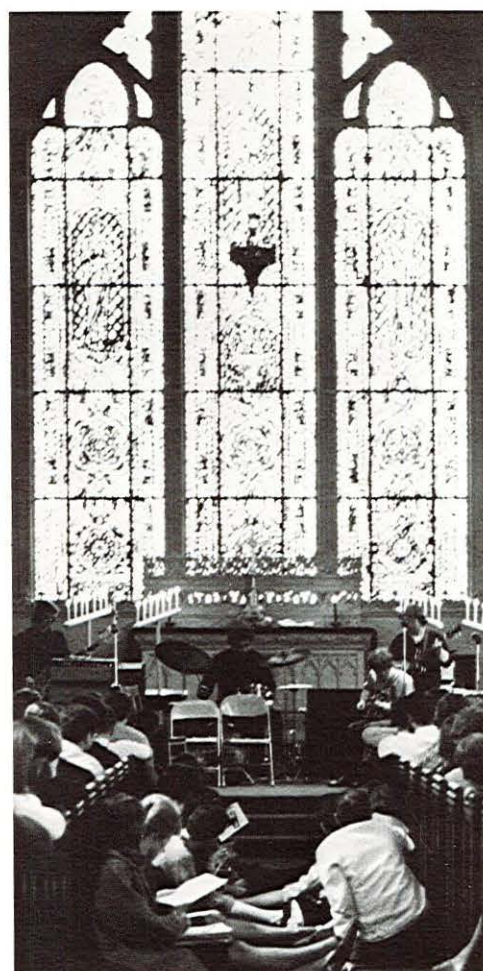
This year Anderson Y will sponsor a coffee house at the top of the Y featuring poetry readings, folk singing, art exhibits, and string quartets.

Intersection, the Y's campus newsletter carries items of current interest on the campus and in the world, plus news and calendar of the Y events.

The Y Alpine Club is organized for the student who wants to get away from the campus and go to the Sierras for a weekend.

Rev. Stan Stevens, the Executive Secretary of the Y, has an open door to students for personal counselling or just plain talk.

The Y program, run primarily by a Student Cabinet, provides the student with a variety of opportunities for spiritual and intellectual growth as well as service and fun. This is accomplished in a variety of ways.



Social Study and Action is the phase of the Y which focuses its attention on the problems of modern society, such as civil rights, slum clearance, and health. The Y and the Pacific Student Association have taken the joint sponsorship of "Project Share", including a Big Brother Program, a club program, tutorial and study hall programs and recreational opportunities for the socially disadvantaged children and students of the South Stockton area. The implementation of this program includes both study of the problems, and action on them, and provides an excellent opportunity to learn as you serve. For further information contact Gus Clement at the Y.

Each year the Y schedules retreats away from the campus where a limited number of faculty and students may participate in discussion of various current issues. The purpose is to allow the students to get to know the faculty and each other.

The International Festival, held in the fall, is sponsored by the Y, International Student Club, World University Service, and the Association for World Affairs. This consists of a world gift bazaar, talent show and coffee house. The proceeds of this are divided among the participating groups.





The Celebrity Series, Co-sponsored by PSA and the University, is presented in the Conservatory during the evenings, while during the day students have an opportunity to talk informally with speakers. Past years have featured poet John Ciardi, novelist Erskine Caldwell, Lisa Hubbs, and a two-day drug symposium.

In college, one of the important parts of education is cultural growth, and on this campus there are numerous opportunities for enrichment.

Pacific is proud of its outstanding broadcasting plant. Under the direction of the adviser, students plan, direct and produce meaningful programs on campus AM/FM radio.

Pacific radio serves the campus over closed-circuit commercial stereo KUOP-AM at 660 and 720 k.c. KUOP-AM is the campus communications system providing information to the student body and as such is programed by college students for college students. An interested student may work in music, production, news, sales or radio in general. For more information, see the adviser.

KUOP-FM, with master controls on the ninth floor of Burns' Tower, is the first major West Coast university station to broadcast in multiplex stereo. It broadcasts nightly over the entire Central Valley of California on 30,000 watts of power. Interested students are to contact Manager Jim Irwin at the AM studios in Chapel Lane.

The Convocation program at the University is designed to bring a variety of interesting and informative speakers to the campus. On Thursday morning at eleven there are convocations throughout the year. The Honors Convocation honors the initiates into the various honor organizations. The trophy for the highest and most improved scholarship for the mens and womens living groups is awarded. Also held in the spring is the Awards Convocation which recognizes outstanding achievement of students in certain areas. The outstanding senior man and women are announced at this time.

**SUNDAY NIGHT FLICS** — Beginning this year, on alternate Sunday nights, the Social Commission is showing old movies of varying quality for your amusement. Come to cheer or boo old favorites like W. C. Fields, Laurel and Hardy, and Murphy and Reagan.

The Naranjado, Pacific's yearbook, is given to each student holding a student body card and having been at Pacific for the entire year. This publication attempts to capture the mood of Pacific through a pictorial image. If you are interested in this aspect of publications contact either of the co-editors, Lea Jamieson or Faye Fujisaki, or Adviser William Kollock.

**CALAVERAS CULTURAL REVIEW**—Last year saw the introduction of the CCR, a satire and commentary quarterly—plus—extras. Many executive positions are still open for this year, and contributions from non-staffers are also welcome. Anyone interested should see Frank Strauss at the PSA office.

Of cultural interest are the following summer programs: the Philosophy Institute at Asilomar, the Folk Dance Camp at Pacific, the Music Camp at the University, the Pacific Marine Station of Biological Sciences at Dillon Beach, and the Columbia Summer Theater. If you are interested in these programs, more information is available in the University Catalogue.

Drama at Pacific has a proud record of excellence, which has become associated with the director De Marcus Brown. The Playbox, a small theater located just off Pacific Avenue, is owned by the school and throughout the year presents many excellent performances. During the summer, the Columbia Theater, located up in the Mother Lode town of Columbia, has five student productions performed in repertory at the Fallon House Theatre. The Studio Theater produces shows which are staged and directed by students. Located under the conservatory stage this theater provides many opportunities for the inexperienced student actor to try his hand in drama.

Throughout the year there may be special lectures such as election campaign speeches, the Colliver Lectureship, and the Tippet Lecture Series.

Pacific's forensics program, which has consistently produced national champions in all fields, has a great deal of flexibility. For those with no previous experience, there is local and Northern California competition. For those with good high school or local records there is Western United States competition. The best UOP teams compete in the national Pi Kappa Delta (forensic honorary) tourney, and four or five nationally known tournaments such as those at Harvard, Georgetown, and Dartmouth. In 1967, Pacific chalked up its twelfth consecutive Pi Kappa Delta sweep, winning more superior awards than any of the 167 competing schools.

The forensic team can always use interested students. Anyone desiring more information regarding forensics should contact coach Paul Winters in North Hall.

The Pacifican, the campus newspaper, is published twice each week, with the exception of dead week and vacations. The paper, student managed and editorially independent, is provided free to every student body member through PSA appropriations and advertising income. The 1967-68 Editor, Glen Nissen, as well as William Kollock adviser, welcome interest and participation in the Pacifican.

On Tuesday and Wednesday nights Raymond and Callison Colleges sponsor High Table which is open to all students. This coming year such people as Everett Dirksen, Ralph Bunche, Ralph Nader, author of the book **Unsafe at Any Speed**, and John Kenneth Galbraith will be speaking at these gatherings.

The Pacific Review is a quarterly publication, sent to parents and alumni of Pacific. The publication is prepared by the Public Relations Department and Alumni Office.



THE

PACIFIC STUDE



NT ASSOCIATION

CONSTITUTION



## PSA CONSTITUTION AND BY-LAWS AS AMENDED, SPRING, 1967

### — PREAMBLE —

We, the students of the University of the Pacific, authorized by the Board of Regents, desiring to develop individual initiative and to further the free and effective functioning of representative student government, do hereby establish this constitution.

### ARTICLE I

#### NAME AND OBJECTIVES

SECTION 1: This organization shall hereafter be known as the Pacific Student Association.

#### SECTION 2: Objectives

Clause 1: To preserve and mold the spirit and traditions of the University of the Pacific.

Clause 2: To insure equal opportunities for all students on the basis of individual worth and regardless of race, sex, religion, ethnic origin, political beliefs, or economic circumstances.

Clause 3: To encourage the students of the University of the Pacific to develop themselves intellectually, physically, and socially, and to assist them in this effort.

Clause 4: To clarify and uphold the responsibilities of the students of the University of the Pacific—to the school itself and to the community.

Clause 5: To encourage all constructive organizational activities which are or would be of concern to the students of the University of the Pacific.

### ARTICLE II

#### MEMBERSHIP AND PRIVILEGES

#### SECTION 1: Membership

##### Clause 1: Regular Membership

A. All undergraduate students regularly registered in any college and/or department of the University of the Pacific shall become regular members of this association upon the satisfactory settlement of student body dues.

B. Any registered special or graduate students may become regular members of this Association upon the satisfactory settlement of regular student body dues.

##### Clause 2: Special Membership

A. All faculty and administrative staff shall become honorary members of this Association without the regular payment of student body dues.

B. Any person rendering four semesters of service to the Association in the ranks of student government, upon the approval of the Senate, shall receive life membership in the Association.

##### Clause 3: Expulsion from Membership

A. Any member may be expelled from membership in the Association for conduct prejudicial to the Associated Students. Failure to adhere to such codes or standards and ethics as may be adopted by the Associated Students shall be construed as prejudicial.

B. Expulsion shall be by 2/3 vote of the Court wherein the violation was heard and with the approval of the Supreme Court.

#### SECTION 2: Privileges

Clause 1: Regular membership entitles the student to the following privileges:

A. A vote at the election of the Association.

B. The holding of any student body offices subject to the qualifications thereof.

C. Student rates to all activities under the auspices of the Association.

D. Subscription to the Pacific student newspaper, the Handbook, and the Yearbook.

Clause 2: Special membership entitles the student to the following privileges commensurate with the following stipulations:

##### A. Honorary Membership.

1. The right to admission to all activities under the auspices of the Association at faculty rates.

2. Subscription to the student publications with the exception of the *Naranjado*.

Clause 3: Special privileges afforded to college students in the Stockton vicinity.

A. College students in the Stockton vicinity, upon the payment of specified dues, may be granted special privileges of the Association.

### ARTICLE III

#### THE EXECUTIVE DEPARTMENT

SECTION 1: The executive authority of the Pacific Student Association shall be vested in the following elective officers: President, Vice President, Secretary, and Treasurer. These officers compose the Executive Board.

#### SECTION 2: Qualifications for elective Executive officers.

Clause 1: Shall have been a member of the Pacific Student Association for at least one semester.

Clause 2: Shall not be on social or academic probation the semester prior to election nor during term of office.

Clause 3: Must pass a constitution test administered by the Committee on Elections.

Clause 4: Shall be regularly enrolled in classes and be a full-time Student.

Clause 5: Previous to his election the Treasurer must be reviewed and declared competent by the Supreme Court of the Pacific Student Association.

#### SECTION 3: Powers and duties of the elected Executive officers.

##### Clause 1: President

A. The President shall call regular meetings of the Executive Cabinet once every other week that classes are in regular session. The President may also call special meetings of the Executive Board or Cabinet.

B. The President may suggest legislation desirable for the betterment of the University and the Student Association through the Senate.

C. The President shall preside over the meetings of the Executive Cabinet and Board.

D. The President must report the proceedings of each Executive Cabinet meeting to the Senate.

E. The President shall act as chief host and spokesman for the Pacific Student Association.

F. The President shall appoint the chairmen of the cabinet committees subject to the advice and consent of the Senate.

G. The President is responsible for the effective functioning of all executive duties.

H. The President may use either blanket or item veto on any legislation within ten school days after the Senate passes on this legislation. A written report of the rationale behind the veto is required and must be presented to the Senate with the veto within the ten-day period.

I. The President shall be the representative of the student body to the Board of Regents through the President of the University.

##### Clause 2: Vice President

A. The Vice President must preside over the Senate and is entitled to a vote in the event of a tie vote of said body.

B. The Vice President must report the proceedings of the Senate to the Executive Cabinet.

C. The Vice President shall have the power to appoint members of the Senate to the various committees of said body.

D. The Vice President shall assume the duties of the President in the event of his absence from office or if said office is vacated before the completion of the term.

E. In case of the absence of the Vice President, the President shall appoint a member of the Senate to chair the Senate meeting.

##### Clause 3: Secretary

A. The Secretary shall maintain and report the minutes of the Senate and Executive Cabinet meetings.

B. The Secretary must maintain an ordinance book which contains a continuous record of all resolutions passed by both the legislative and executive branches.

C. The Secretary must maintain all correspondence of the Pacific Student Association.

D. The Secretary has the power to appoint a clerk for temporary assistance in times of extreme need. Pacific Student Association funds will be used to pay for these extra services.

##### Clause 4: Treasurer

A. The Treasurer must report the financial standings and transactions of the Pacific Student Association to all Executive Cabinet and Senate meetings.

B. The Treasurer must arrange for the annual auditing of the Pacific Student Association financial records.

C. The Treasurer must head the financial committee which shall be composed of two senators appointed by the Vice President, and two other members appointed by the Treasurer. This committee shall prepare the allocation of the budget, review the allotment of funds, and advise on budget adjustments during the year.

D. The Treasurer shall be an ex-officio member of all executive and legislative committees that involve the spending of Pacific Student Association funds.

E. The Treasurer may suggest a candidate for the office of Business Manager and he shall be approved by the President and the Senate. The Business Manager shall be the person designated from the Pacific Student Association who shall be in charge of vested student interest in the Student Union. He shall be responsible to the Treasurer. His salary will be determined by the Executive Cabinet with the approval of the Senate.

F. The Treasurer has the power to appoint a clerk for temporary relief and assistance in times of need. Pacific Student Association funds will be used to pay for these extra services.

#### Clause 5: Attendance Requirements

A. Attendance is required at all Executive Department meetings unless there is an excused absence.

#### SECTION 4: The Executive Cabinet

Clause 1: The Executive Cabinet is the administrative body of the Pacific Student Association. It meets to coordinate the functions of the Pacific Student Association, to voice the needs of the various areas of administration through proposal of legislation, and to enforce the legislative acts as passed by the Senate.

Clause 2: Members of the Executive Cabinet are the elected officers of the Executive Board, the Communications Commissioner(s), the Social Affairs Commissioner, the elected representative of the Associated Women Students, and the National Student Association Coordinator.

A. The Communications, Social Affairs, and the Academic Standards Commissioners will be appointed by the Executive Board; other Cabinet members are designated by the Senate and appointed by the President subject to the advice and consent of the Senate and approved by a majority vote.

B. The Rally Commissioner is elected by the student body at the regular election of the Executive officers.

C. The regular election of the Executive officers shall be held between March 15 and April 15.

1. There shall be an election committee appointed by the Vice President to conduct elections procedure and determine the policy of elections.

2. The Senators shall also be elected in the Spring concurrently with the election of the Executive officers.

3. The National Student Association Coordinator shall be elected at the regular election of the Executive Officers.

4. In case of a change in office or a move in residence causing a change in representation (as in the case of the Senators), there shall be a re-election within two weeks after the change in qualifications.

5. Elected officers shall assume official duties on the first Tuesday in May.

#### Clause 3: Qualifications for all cabinet members

A. Shall have been a member of the Pacific Student Association for at least one semester.

B. Shall not be on social or academic probation for the semester prior to election or during term of office.

C. Must pass a constitution test administered by the Elections Committee.

D. Candidates for appointive cabinet positions must submit written applications to the President.

#### Clause 4: Duties and powers of the Cabinet members

##### A. Communications Commissioner and Committee

1. The Communications Commissioner shall head the Communications Committee which shall be composed of representatives of all avenues of campus communication which now includes the *Handbook*, Pacific student newspaper, *Naranjado*, campus radio, campus television, and any other new forms of communication as recognized by the legislature.

2. The newly appointed Communications Commissioner is responsible for the publication of the *Handbook* with the assistance of the incumbent Communications Commissioner.

3. Subject to the approval of the Executive Board this committee shall establish all rules and regulations governing the qualifications and duties of the staffs, and all questions of policy of all the Association publications and modes of communication as listed previously.

4. Three faculty members shall be selected by the President of the University to serve as Advisors with the understanding that the best interest of the Pacific student newspaper, the *Naranjado*, and the campus radio shall thereby be served.

5. The Editor and the Business Manager of the Pacific student newspaper shall be nominated by the

incumbent staff and approved by the Communications Commissioner. The Editor and the Business Manager shall assume their duties at the beginning of each year for a one-year term of office.

6. The Communications Commissioner shall submit the names of the Editors and Business Managers of the *Naranjado* and the Pacific student newspaper to the Senate for approval.

7. The Editor and Business Manager of the *Naranjado* will receive tuition or room and board aid equal to 50 and 25 per cent of tuition, respectively. The photo and copy editor shall receive tuition or room and board aid of \$50.

8. The Editor of the Pacific student newspaper shall receive tuition or room and board aid of 75 percent of tuition. The Business Manager and News Editor shall receive aid of 33 1/3 per cent of tuition. The Sports Editor shall receive \$75 aid.

#### B. Finance Committee (Chaired by the PSA Treasurer)

1. In order to facilitate the formulation of the PSA Budget, the Finance Committee shall review and present all budget requests submitted by organizations receiving funds from the PSA.

2. Tentative budgets for the following school year shall be filed not later than two weeks before the final week of the spring semester. This budget shall include a tentative schedule of activities and estimated expenses for the following year.

3. The detailed activity schedule and budget request shall be filed no later than the fourth Monday following the opening of the Fall semester.

4. Additional requests for funds during the year must be submitted to the Finance Committee for presentation to the Senate.

#### C. Social Affairs Commissioner and Committee

1. The Social Affairs Commissioner shall maintain and publicize through the established organs of campus communication all activities on the social calendar for the PSA.

2. The Social Affairs Commissioner shall be responsible for organizing and carrying out the traditional social events sponsored by the PSA and any new events designated by the Senate to be sponsored by the PSA.

3. Membership in said committee shall comprise the presidents of the various academic classes of the University.

#### O. Rally Commissioner and Committee

1. The members of this committee shall be selected by the Rally Commissioner and membership shall be unlimited, except that it shall be representative of school activities and must be approved by the Executive Cabinet.

2. The Committee shall select one Faculty Advisor each from the drama and music departments.

3. This Committee shall be responsible for all functions intended to create enthusiasm for activities sponsored by or related to the Association.

4. This Committee shall also be responsible for working in conjunction with the Academic Standards Committee for the preparation and presentation of the assembly program, the purpose of which shall be to create and perpetuate a feeling of unity within the Association.

5. Selection of Cheerleaders and Songleaders.

(a) The Head Cheerleader and the Head Songleader will be selected by the student body at the regular spring elections of the Association.

(b) From three to five cheerleaders will be selected by a committee of one representative from each living group with the Rally Commissioner and the Head Cheerleader.

(c) From four to six songleaders will be selected by a committee of one representative from each living group with the Rally Commissioner and the Head Songleader.

(d) All candidates must be members of the Association in good standing; they must not have been on academic or social probation the semester prior to elections nor during term in office; they shall have been a member of the Association for at least one semester prior to elections.

6. Cheerleaders will be responsible for attending all games and rallies at home during the football and basketball seasons. They are also responsible for attending all games away from school which the student body is supporting. Songleaders are required to attend all games and rallies at which the band will be present. They will be allowed two absences. More than two will be sufficient

reason for suspension from office. The absence will be recorded by the Rally Commissioner and he in turn shall present them to the Senate.

#### E. Academic Standards Committee and Commissioner

1. The academics Standards Commissioner shall head a committee composed of one member from each cluster college and four members from the remainder of the University. The Academic Vice President of the University shall be an ex-officio member of the Committee and shall act as an advisor.

2. The members of the Committee shall be selected as follows:

(a) Each cluster college shall elect one member of the committee

(b) Four members of the Committee shall be elected at large from the remainder of the University.

(c) Their election shall be held concurrently with the class elections in the Fall.

3. The Academic Standards Commissioner and the members of the Academic Standards Committee shall serve as the student body's representatives to the University Student-Staff Relations Council.

4. A subcommittee shall be responsible for evaluating, promoting, and publicizing the Honor Code.

#### F. Associated Women Students Representative

1. Shall reflect the interest and execute the will of the women students and unite them in the advancement of academic and social values.

#### Clause 5: Compensation for Executive Officers

A. The members of the Executive Board (President, Vice President, Secretary, and Treasurer) shall receive free their PSA cards, in addition to the following rebates:

1. The President shall receive tuition or room and board aid of 75 per cent of tuition.

2. The Vice President shall receive tuition or room and board aid equal to 50 per cent of tuition.

3. The Secretary and Treasurer shall receive tuition or room and board aid rebates equal to 25 per cent of tuition.

B. These costs shall be borne by the PSA.

#### Clause 6: Meetings of the Standing Committees

A. Meetings of the Standing Committees may be called by the chairman of the committee or by the Executive Board.

#### Clause 7: Orientation of newly elected Executive Officers

A. All executive officers are required to leave a written report of their duties and functions upon relinquishing their office. They should include suggestions for future officers of the Association.

B. Copies of official reports shall be made available to new officers of the Association at the beginning of the school year and shall be retained on file by the Secretary.

### ARTICLE IV

#### THE LEGISLATIVE DEPARTMENT

SECTION 1: The general supervision over all Associated Students' activities shall rest with the Senate. All legislative power shall be vested in this body.

SECTION 2: The voting members of the Senate shall be: one elected representative for every 260 PSA members or fraction thereof as determined by the fall registration within the jurisdiction of the Pan Hellenic Council, Interfraternity Council, Women's Interdorm Council, Men's Interdorm Council, the off-Campus Students; and one elected representative for each 260 PSA members residing at any cluster college recognized by the University as having received college status.

Clause 1: Representation will be determined at the Fall registration when voting residence is declared.

#### Clause 2: Qualifications of Senate members:

A. Shall have been a member of the PSA for at least one semester prior to election.

B. Shall not be on social or academic probation during term of office.

C. Must pass a constitution test administered by the Committee on Elections.

D. Shall be regularly enrolled in classes and be a full-time student.

E. Shall be a resident of a living group within the jurisdiction he will represent.

Clause 3: The Senate must convene by the second week in May, the Senators having been previously elected between the 15th of March and the 15th of April concurrently with the election of the Student Body Officers.



Clause 4: Term of office for each Senator shall be for one year.

SECTION 3: The non-voting members of the Senate shall include the Association President, Secretary, Treasurer, the deans of Students and Women, and such other persons as the Senate shall designate as achieving non-voting status.

SECTION 4: Each living group on the University campus is entitled to send one ex-officio representative to the Senate. The representative has the right to attend all meetings of the Senate with floor privileges but is not entitled to vote.

SECTION 5: The Senate shall have the following powers and responsibilities:

Clause 1: To determine the basic policies of the Association.

Clause 2: To review and take appropriate action on any decision and/or action of the Executive Cabinet.

Clause 3: To pass on the budget, supervise the collection of funds, and appropriate funds for special purposes.

Clause 4: Following the Spring elections the incumbent Senate must approve the appointment of a Chief Justice and two Associate Justices.

Clause 5: To require reports from the PSA President, the Treasurer, and recognized head of any other agency of the Association.

Clause 6: To establish and organize any standing or temporary committee that the Senate deems necessary for the proper functioning of the Association.

Clause 7: Meetings

- A. The Senate shall meet at least once every other week during the school year. These meetings shall be conducted on alternating weeks with the Executive Cabinet. Meeting time and place should be regular and publicly announced.
- B. Special meetings may be called by the Vice President, the Executive Board, or by petition signed by a simple majority of the members of the Senate.
- C. All meetings of the Senate shall be open to the Association.

Clause 8: By a 3/4 vote of the Senate a standing committee of said body may be elevated to a standing committee of the Executive Cabinet.

Clause 9: Standing Committees

- A. A standing committee shall exist for the purpose of supervising nominations and candidacy, scheduling and conducting elections with the approval of the Senate.
- B. A standing committee shall exist for the promotion of campus drives, such as the World University Service. The chairman shall be appointed by the Vice-President and approved by the Senate.
- C. A standing committee shall exist for the purpose of coordinating the various PSA-sponsored programs of community betterment and social work. This committee shall be known as the Student Community Action Committee. The chairman of this committee shall be known as the Student Community Action Coordinator and shall be appointed by the Vice-President.

Clause 10: Within the limits as established by this Constitution the Senate may create and fill such offices and make such rules as it deems necessary for its operation.

SECTION 6: Legislation and statutes

Clause 1: Legislation shall be the preparation and enactment of laws and statutes which affect any activity and/or interest of the Association.

Clause 2: Legislation can only be brought to the floor of the Senate by a voting member of said body or by recommendation of the Executive Cabinet through the PSA President.

Clause 3: A statute shall be any proposal which has been enacted into law by the Senate as provided herein and which establishes, amends, or clarifies a standing policy of the PSA.

- A. Before a statute can become law it must receive the proper vote of an existing quorum in the Senate.
- B. The Senate may override the President's veto of any statute by a favorable vote of 2/3 of the existing quorum.

SECTION 7: Attendance and proxy

Clause 1: All members of the Senate, those elected representatives and non-voting members are required to attend all meetings of said body. Unexcused absence from two meetings will result in the member being referred to the Judicial Court for appropriate action.

Clause 2: If a member of the Senate is legally excused from a meeting it shall be a privilege and a responsibility to appoint a proxy; said proxy must have the written consent of the member he is to represent. No person shall sit on the Senate with more than two votes: his own and one as a proxy. The number of times that a member of the Senate may designate such a proxy shall be left to the discretion of the Vice-President.

SECTION 8: The Senate shall have the power to make all necessary by-laws and regulations of the Association.

SECTION 9: Upon presentation to the Vice President of a valid petition signed by 10 per cent of the voting members of the PSA as determined by the number of votes in the last election of the Association, any measure, except in the matters dealing with the expenditure of PSA funds, must be submitted to a vote of the members of the Association.

SECTION 10: No measure initiated and subsequently adopted by 2/3 of those members of the Association voting in an election called for that purpose shall be subjected to the veto of the President of said Association, nor shall any such measure be amended or repealed except by a vote of the voting members of the PSA unless otherwise provided in the said initiative measure.

## ARTICLE V THE JUDICIARY DEPARTMENT

SECTION 1: All judicial power of the students of the University of the Pacific shall be vested in the Judicial Courts.

SECTION 2: Structure

Clause 1: The Judicial Branch shall consist of one Supreme Court, the College of the Pacific Academic Court, the College of the Pacific Social Court and living group courts, and such courts as the Cluster Colleges may establish.

- A. Members of the Supreme Court are the Chief Justice of the Supreme Court, the Chief Justice of the College of the Pacific Academic Court, the Chief Justice of the College of the Pacific Social Court, and a Chief Justice from each Cluster College.
- B. The College of the Pacific Academic Court and the College of the Pacific Social Court shall each have one Chief Justice and six other members.
  1. There shall be at least one Freshman on the College of the Pacific Social Court and on the College of the Pacific Academic Court.
  2. The Chairman of the Honor Code Committee shall be a member of the College of the Pacific Academic Court.
- C. Cluster College courts are organized according to the regulations and policies of their respective college.
- D. All College of the Pacific living groups must establish their own social courts.
- E. All courts may establish their own rules of procedure.

Clause 2: Meetings

- A. All courts shall meet as needed.
- B. Each court may reserve the privilege of entertaining open hearings.

Clause 3: A record of all cases and decisions of each court is to be kept on file. Access to these documents may be obtained through written permission of the Chief Justice of the appropriate court or the presiding officer of the living group court.

SECTION 3: Jurisdiction of the Courts

Clause 1: The Supreme Court of the PSA shall have the power of judicial review and shall rule on all other matters involving questions of constitutionality.

Clause 2: The Supreme Court shall determine jurisdiction of disputed lower court cases.

Clause 3: Academic Violations

- A. The Academic Court of the College of the Pacific shall have jurisdiction over all cases involving violations of the Honor Code in all classes not offered by a Cluster College.
- B. The Cluster Colleges shall have jurisdiction over all cases involving violations of the Honor Code in all classes of the respective Cluster College.

Clause 4: Social Violations

- A. For the purpose of jurisdiction over social violations, all students not enrolled in a Cluster College shall be considered under the jurisdiction of the social courts of the College of the Pacific.
- B. All college social courts shall have jurisdiction over the members of the respective colleges.
- C. The individual living groups of the College of the Pacific shall have original jurisdiction over all violations occurring within the respective living group.
- D. The Social Court of the College of the Pacific shall have original jurisdiction over all cases involving College of the Pacific students and involving violations occurring outside any College of the Pacific living group.
- E. The individual living group courts may refer cases to the College of the Pacific Social Court if they deem necessary.
  1. The referral is to be made in writing to the Chief

Justice of the College of the Pacific Social Court outlining the reasons for referral.

2. All records pertaining to the case must be made available to the Social Court.
3. The College of the Pacific Social Court shall have the option of hearing a referral or returning case to the living group court.

SECTION 4: Qualifications for all Court Members

Clause 1: All persons serving in any court position are to be PSA members in good standing.

Clause 2: No person serving in any court position shall be on either social or academic probation during the semester previous to appointment nor during term of office. In the case of persons serving on any court from the Cluster Colleges, these criteria shall be determined by said college administration.

Clause 3: Selection of Chief Justices

- A. The Chief Justice of the Supreme Court, the College of the Pacific Academic Court and the College of the Pacific Social Court shall be appointed by the President subject to the advice and consent of the Senate.
- B. Said appointments shall be for a term of one year.
- C. The Chief Justices of the Cluster Colleges shall be selected by a method determined by the respective Cluster Colleges.

Clause 4: Qualifications for the Chief Justice of the Supreme Court

- A. The Chief Justice shall be a full-time student and a PSA card holder for at least one semester.
- B. He shall be appointed for this position specifically and shall have had judiciary experience on the College of the Pacific Social or Academic Court or on one of the Cluster College Courts.
- C. He must be an upperclassman or the equivalent thereof. In the case of Raymond College, upperclass status is determined by the completion or process of completion of 45 units. All other upperclassmen status is to be determined by the Supreme Court.
- D. He may not be on academic or social probation the semester prior to his appointment nor during his term of office.

Clause 5: Qualifications for the Chief Justices of the College of the Pacific Academic Court and Social Court.

- A. They shall also be full-time students and PSA card holders for at least one semester previous to appointments.
- B. They shall be appointed specifically for their positions.
- C. They must not be on academic or social probation the semester prior to their appointment nor during their term of office.

Clause 6: Qualifications for the Remaining Members of the Courts

- A. They shall be PSA card holders.
- B. They may not be on academic or social probation the semester prior to their appointment nor during their term of office.

SECTION 5: Powers and Duties of the Courts

Clause 1: The Judicial Branch shall review, interpret, and have jurisdiction over all issues involving academic or social discipline or constitutionality upon petition to the Court as follows:

- A. A plea to the Supreme Court by not less than five voting members of the Senate challenging the constitutionality of any legislation or activity of the Legislative or Executive Branches.
- B. A plea to the Supreme Court signed by not less than fifty members in good standing of the Association challenging the constitutionality of any legislation or activity of the Legislative or Executive Branches.
- C. A request to the Supreme Court by the Administration of the University of the Pacific to determine the constitutionality of any legislation or activity of the Legislative or Executive Branches or of any student behavior.
- D. Any members of the Pacific Student Association in good standing may bring before the Supreme Court in writing for its consideration any legal grievance in regard to student activities.

Clause 2: The courts shall have the power to assess penalties in all cases involving breaches of both academic or social citizenship. The Supreme Court, the College of the Pacific Academic Court and Social Court, and the Cluster College Courts shall present these decisions to the appropriate college personnel authority to enact the decision.

Clause 3: It is not within the power of the Judiciary to refuse to review any appeal made by the legislature commensurate with the afore stated stipulation regarding appeal.

Clause 4: All cases of constitutionality must be tried in open Court.

SECTION 6: Court Decisions and Voting

Clause 1: All court decisions shall be made by a majority of a quorum.

Clause 2: A Justice may abstain from voting at his discretion. He must abstain if the judgment being rendered is one concerning a case tried during his absence.

SECTION 7: Appeals

Clause 1: Cluster Colleges shall determine their own system of appeals.

Clause 2: Appeals from the College of the Pacific living group courts may be made by the individual or groups concerned to the College of the Pacific Social Court.

- A. The appeal must be made in writing to the Chief Justice of the College of the Pacific Social Court.
- B. Appeals may be granted on the basis of prejudicial evidence, prejudiced court members, new evidence, or any illegal procedure.
- C. The Chief Justice of the College of the Pacific Social Court will present the appeal to the College of the Pacific Court which will then decide if the appeal should be granted. If said appeal is granted, the lower court must make all relevant information available to the College of the Pacific Social Court.

Clause 3: Appeals to the Supreme Court

- A. Appeals may be made to the PSA Supreme Court from the College of the Pacific Academic Court or Social Court under the criteria established in Clause 2 above.
- B. Appeals may be made to the PSA Supreme Court from the Cluster College Courts under criteria established by the respective Cluster Colleges.

SECTION 8: AWS Standards Court

Clause 1: The AWS Standards Court shall act as appellate court within the University of the Pacific court system.

Clause 2: Duties and Powers

A. The AWS Standards Court will hear appeals from all College of the Pacific women's living groups in cases involving minutes and dress.

Clause 3: Appeals

- A. Appeals may be made to the AWS Standards Court from a College of the Pacific women's living group in writing to the AWS first vice president. Appeals from the AWS Standards Court may be made in writing to the College of the Pacific Social Court.

## ARTICLE VI

### POWERS RETAINED BY THE STUDENTS

SECTION 1: The members of the Pacific Student Association shall retain the power of referendum and may bring up for popular election any legislation action by the same method required for amending this Constitution.

Clause 1: After a referendum has been passed, the Senate shall not again pass within six school months a legislative proposal to the same effect as that which was referred.

Clause 2: If a referendum fails to pass, the same legislative proposal may not again be brought up for referral within six school months.

SECTION 2: The members of the Pacific Students Association shall retain the power of direct initiative and bring up for popular election any measure not previously acted upon by the same method required for amending the Constitution.

Clause 1: If an initiative fails to pass, it may not be brought up before the student body at large or the Senate within six school months.

SECTION 3: The members of the Pacific Student Association shall retain the power of recall and may bring up for popular election the dismissal of any student officer believed to be carrying out his duties in an unsatisfactory manner. This election shall be called upon presentation to the Supreme Court a petition, signed by 20 per cent of the number of members of the Associated Students voting in the last general student body election, stating the legal grounds for the recall of the officer.

SECTION 4: No segment of this Constitution shall be interpreted as denying the students of the various cluster colleges their rights as members of their respective colleges. In keeping with the standards as heretofore established within this Constitution, each cluster college commands the Association's respect for their independent traditions and student policies insofar as they do not infringe upon the general well-being and integrity of the members of the Association at large.

## ARTICLE VII

### AMENDING THIS CONSTITUTION

SECTION 1: Proposed amendments to the Constitution shall be submitted (a) by a two-thirds majority vote of the Senate or

(b) by petition signed by 10 per cent of the number of members of the Association voting in the last general student body election and filed with the Supreme Court who in turn must render such to the Elections Committee. Such proposed amendments must be posted in at least two prominent places on the college campus for at least one week prior to being voted upon.

SECTION 2: It shall require a two-thirds vote of the total legal votes cast by the members of the Association to pass an amendment or to ratify this Constitution. Voting shall be by secret ballot at a special or regular election under the direction of the Elections Committee.

## ARTICLE VIII

### BY-LAWS

SECTION 1: Proposed by-laws shall be submitted to the Senate at least one week prior to their adoption.

SECTION 2: Any proposed by-laws shall become effective upon passage by a three-fourths majority vote of the Senate.

## ARTICLE IX

### MISCELLANEOUS

SECTION 1: Sturgess Rules of Order shall govern in the procedure of meetings provided for in the Constitution of this Association.

SECTION 2: The school colors shall be orange and black.

SECTION 3: The official flower shall be the California Poppy (Papaver Eschscholtzia).

SECTION 4: The official emblem shall be the Bengal tiger.

SECTION 5: Vacancies occurring in any of the offices as provided for in this Constitution shall be filled by the same process as provided for their appointment or special election.

SECTION 6: All Association elections shall be by Australian Ballot requiring that a candidate receive a majority of the votes cast in order to be elected.

SECTION 7: Class governments may exist for the purpose of providing unity among the classes and perpetuating the traditional functions of the classes.

Clause 1: All class officers are to be elected within the first three weeks that school is in session the Fall semester.

Clause 2: Class officers will be required to meet the stipulations as heretofore mentioned in this Constitution.

SECTION 8: A quorum for all meetings of groups of the Association shall be a majority of regular membership.

SECTION 9: Any members of the Association may be given funds for expenses incurred as representative of the Association to specific functions designated by the Senate. They shall be required to submit an itemized account of their use of those funds to the Association.

SECTION 10: No person may hold offices concurrently on the Executive Cabinet, the Senate, and the Judiciary.

### BY-LAWS ON JUDICIARY PROCEDURE

1. Double Jeopardy: No person, once found innocent, shall be tried again for the same offense.
2. Punishment suspended during appeal: Punishment shall be suspended during the process of appeal.
3. Innocent until proven guilty: All defendants shall be presumed innocent until proven guilty.
4. Adequate notice of charges: All defendants shall be given notice of charges adequate to prepare a statement of defense.
5. Notice or rights: Courts must inform defendants of their rights and privileges, including the right to appeal.
6. Rights retained by students: The enumeration of certain rights in these by-laws shall not be considered as abridging any other rights retained by the students.
7. Equal protection: All defendants shall be entitled to equal protection under the law and constitution of the Pacific Student Association.



The many traditions at Pacific enrich our lives and later give us wonderful memories. From the old and newer traditions come something which is known as the Pacific Spirit. What is to become of these traditions in the next four years depends greatly upon what the class of 1971 is willing to do with them.

Each year the freshmen learn something about Pacific through a Freshmen Orientation the week school begins. Such activities as Faculty Dessert, Tigertags, the Frosh Rally, a street dance, and the President's Reception are among the activities provided for freshmen.



Parents Day, an activity held later in the fall, and again in the spring, gives the parents an opportunity to see the campus and meet the faculty.

Founders Day is the time set aside for honoring those who founded our University. Events include the awarding of honorary degrees and a special guest speaker.



Christmas provides many of the most searching traditions at Pacific. The ladies of Covell Hall hold a tea and open house for which all residents beautifully decorate sections in the Christmas theme and spirit. Each year, the Sunday before Christmas, Handel's "The Messiah" is presented. The Christmas Pageant consists of a candlelight procession led by the A Cappella Choir throughout the campus and joined by students and faculty. The procession goes to the Conservatory where the pageant of many Christmas songs is presented by individual living groups.

If you like strawberries and all the trimmings the tradition of Strawberry Breakfast is for you. This is an all University event which is sponsored by the Y. Students and guests join together on the lawn to enjoy hot biscuits, jam, milk, coffee and, of course, fresh strawberries.

Soon after semester break comes the wild and exciting program called Band Frolic. Twelve minute skits are put on by each living group with a theme which incorporates dancing and singing and an abundance of original humor. This program runs for two nights and is usually a sellout. The proceeds make the yearly Band Tour possible.



Mardi Gras weekend provides a variety of activities beginning on Friday afternoon with trike races, pie eating contest, and other activities. Saturday evening, after a day of constructing booths, there is a carnival and dance. Students wear costumes adding color and character to the festivities. The booths are designed and constructed by the various living groups. The evening is highlighted by the crowning of Mardi Gras queen and Ugly Man.

For the first time this year, the PSA Handbook is printed as part of a supplement to the Naranjudo. This is designed to give incoming students, all of whom receive it, a feel for the school. The Handbook is compiled by the Communications Commissioner with the help of the yearbook staff.

Later in the spring semester AWS sponsors Women's Day to honor the women of Pacific. Other activities include fashion shows, banquet, and the awarding of the various honors to the women students. There is also the traditional tapping of the Spurs and Mortarboard.

Each semester the Academic Vice President announces the Dean's List to give proper recognition to all full-time candidates for a Bachelor's degree who have achieved a 3.50 or better grade point average in the previous semester. Consistent appearance on the list leads to honors at commencement.



When you enter the University, you immediately assume a new dimension of responsibility. In making a voluntary association with Pacific, you in effect agree to conduct yourself in a manner which will reflect the high standards of the University.

To solve some of the problems of community living and to maintain the character of the University's program, certain regulations are required. These regulations are presented in this Handbook, in the Social Code, distributed by the Dean of Women's office, the University Catalogue, and dormitory regulations.

University students are expected to appear in classroom buildings, the dining halls and the library in neat campus dress. It is difficult to define this and the good taste and common sense of mature students should prevail. To help set the tone, the following minimum standards are indicated for the buildings mentioned above: No bare feet, no gym shorts, swim shorts, other "short shorts" or dirty, unkempt T-shirts or sweat shirts and no topless attire for men (or women either, for that matter.)

#### Residence Halls

If they so desire, student residences may set further standards for appropriate dress, applicable while students are in the building.

#### Dining Halls

The above standards shall apply in the dining halls except that for Sunday-noon dinner and special dinners, men shall wear dress shirt, tie, good shoes. Jackets will be mandatory from September 15 through Easter. For dress dinners, women shall wear dressy dresses and heels. Robes and curlers at meals are not acceptable for women (or for men either).

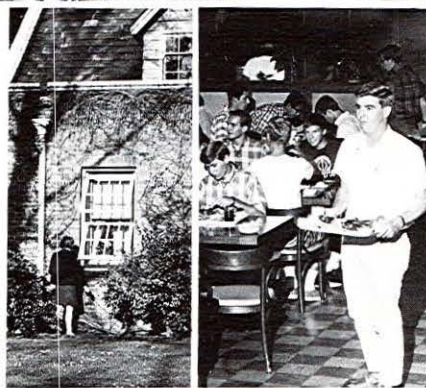
To those who become ill or need the aid of a doctor, the West Memorial Infirmary offers such help. The infirmary fee is required by all those taking seven units or more, those students residing on campus, and those students who eat in the campus dining hall. The fee is included in the tuition charges.

The hours of the infirmary are as follows:  
8:30-11:30 a.m.  
1:00-5:00 p.m.  
7:00-7:30 p.m.  
Sundays and holidays 9:00-12:00

Emergency service is always available in addition to the regularly scheduled hours.

Drinking is not permitted any place on the campus or at any college function wherever held. You are not permitted to have alcoholic beverages in your possession on the campus or in your living quarters. It is however recognized that the college does not have authority over the "legal drinking" of adult students off campus. No student may appear on the campus under the influence of alcohol without subjecting himself to discipline.

Each student who has a car on campus is required to register his car at the Business Office. For a nominal fee, a parking sticker is obtained which must be attached to the windshield of the car and thus permits parking on the campus. For further information on driving and parking regulations a pamphlet may be obtained at the Business Office containing this information.



Hours for men are left to their own discretion. First semester Frosh women and women on probation have the following hours:

Week-night—10:30 p.m.

Fridays and Saturdays—1:00 p.m.

Sundays—12:00 p.m.

Plus—10 "overnights" or 2:00 late leaves during the semester.

Second semester Frosh women and all other women have the following hours:

Week-nights—12:00 p.m.

Fridays and Saturdays—2:00 p.m.

Sundays—12:00 p.m.

On certain special occasions hours may be extended until 2:30. This however is decided by Dean Davis and the AWS Council.

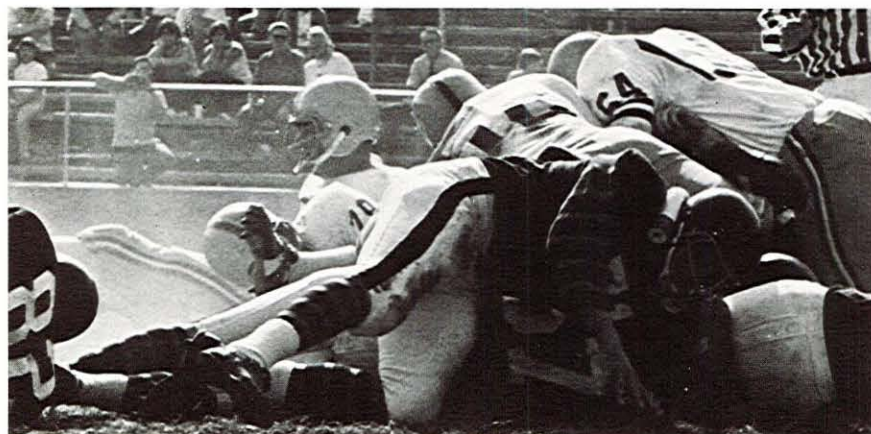
The dining hall requires the use of meal tickets, included with the cost of room and board if you are a full-time resident student. If you live off campus you may purchase a meal ticket for the desired meals. This ticket is not to be used by persons other than the one to whom the ticket is issued.

If you are a full time student, upon registration, you automatically receive your PSA card. If you are a part time student, you may receive this card upon payment of the PSA fee. This card entitles you to the following: a vote in all PSA elections, to hold any student body office subject to qualification thereof, student rates to all activities sponsored by the PSA including free admission to athletic events, free subscription to the Pacifican and the Naranjado, both your PSA card and your library card may be used for identification at the library or when cashing checks.



In the tradition of the "Grand Old Man," Amos Alonzo Stagg, Pacific's teams are fighting teams, no matter what sport. The emphasis of Pacific Athletics lies in the building of strong character and the developing of competitive spirit.

Intramural Sports are organized on the basis of living groups and offer anyone who wishes the opportunity to participate. This program is offered to both men and women and covers a variety of sports.



The Women's Recreation Association program covers both campus intramural and intercollegiate sports for women. Competition in such sports as basketball, volleyball, ping pong, badminton, and swimming are offered. Tournaments are scheduled in the evenings and are offered to all girls who are interested.



As a tribute to the unified effort of the people of Stockton, Pacific Memorial Stadium, which seats 36,000 people, was built in 1950. The gym at Pacific contains a number of basketball, badminton, and volleyball courts as well as two classrooms and a dance studio. The sports pavilion houses facilities for gymnastics and handball. The Pacific Pool, an outdoor heated pool serves as a recreational facility as well as training and competition pool. New tennis courts have recently been completed just north of the Calaveras River.

The record of four wins and seven losses provided the Tiger football team with the finest winning percentage in over three years. Doug Scovil was named Coach of the Year for his extremely rapid development in the improvement of the quality of Pacific Football.

The future looks extremely bright for the Tiger Football team and 1967 should bring with it another giant step in Pacific's climb back up the football ladder. Veterans return at every position, but they will surely be tested by the strong inflow of top junior college talent—1967 could be the year of the Tiger!

The Tiger soccer team ended the season last year with a 6-4 record. Highlighting last years season were the upset victories against the Air Force Academy and City College of San Francisco. With Dick Davey as the coach, the team this year promises to again make an impressive showing.





Pacific provides a number of libraries for the use of students. The main library is Irving Martin Library. Other branches provide specialized services and materials. In addition to the libraries listed below, specialized libraries include the Commons Room at Raymond College, the Centro Administrativo of Covell College, and the library located at the Pacific Marine Station at Dillon Beach.

The hours of the Irving Martin Library are as follows:

Monday thru Thursday—8 a.m. to 10 p.m.

Friday—8 a.m. to 5 p.m.

Saturday—9 a.m. to 6 p.m.

Sunday—2 p.m. to 10 p.m.

The pharmacy library, located in Weber Hall is open the same hours as the Irving Martin Library.

The music Library which is located in the Music Annex is open for daytime use only.

Also open for daytime use is the Curriculum library which is located in Bannister Hall.



The Student Book Store, besides providing all items found in a stationery store, also sells sweat shirts, decals, and new and used books necessary for school. At the end of the semester it is possible to sell text books. The Book Store is open daily from 8 a.m. to 5 p.m. and on Saturday from 9 a.m. until 12 noon.

The United States National Student Association (NSA) serves as a representative voice of American college and university students. The program operates on three levels. On campus it acts as a linkage to other campuses of the U.S. through the Student Government Information Service, "a clearing house on all phases of campus life."

Supplemental services are the NSA publications and the University Press Service. Nationally, NSA issues reports on Congressional legislation of interest to students, encouraging students to participate in the democratic process. At annual NSA legislative session, student delegates formulate the NSA policy on key issues, then consider resolutions supporting the policy for the coming year.

The NSA also provides scholarships and travel organizations, and U.N. and international student organizations. Finally, NSA represents the American student in the international community. It attempts to promote and maintain world understanding through participation in the International Student Conference. In addition, it is active in support of activities involving foreign and domestic relations. Educational travel is incorporated in the organization, offering the student transportation and lodging at a lower cost.

The NSA Coordinator at Pacific is Laurel Koepert, who is available to provide interested students with information about the organization and its activities.

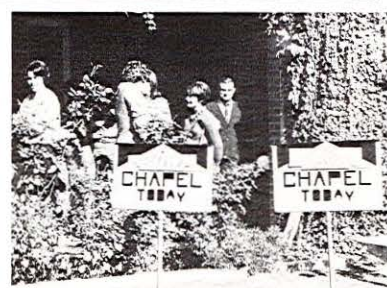
The Opera Theatre of the University gives one performance annually. In recent years such operas as "Fidelio" and "Faust" have been performed. Student recitals are scheduled throughout the year.



Founded in 1878, the Conservatory is the center of Pacific's music life. At the Conservatory there are performances, concerts, and faculty and student recitals throughout the year.

Open to students as a class, the chorus performs two major works during the year. At Christmas they present the Messiah and in the Spring they present one other choral selection.

The Pacific Band, under the direction of James Douglass, serves the campus in many ways. In the fall the Tiger Band adds spirit and color to the football games, while the Pep Band plays at the football and basketball rallies. In the Spring the Full Concert Band travels on an annual tour to many West Coast cities and towns. The Band also performs a concert on the Y lawn in the spring just before finals.



A Clinical Pharmacy is located in Weber Hall. Here one may obtain prescriptions and drugs.

The campus barber shop is located between the End Zone and the Student Book Store.

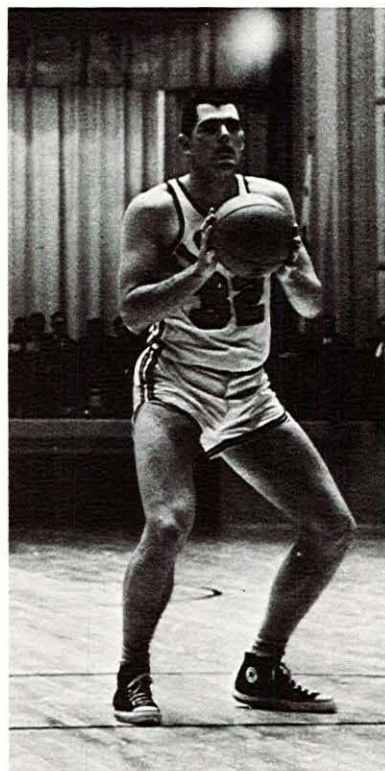
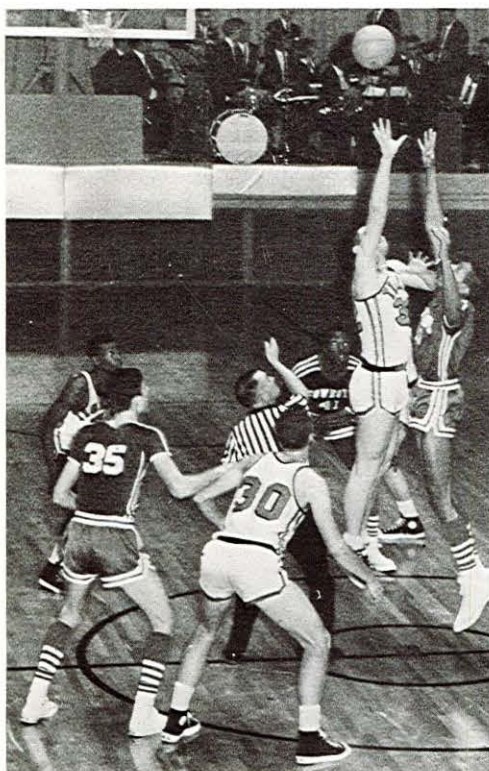
Coin-operated washing machines and dryers are located in the residence halls. There are also laundromats and dry cleaners located near the school.

The University maintains a Placement Office. It assists students in securing part time employment. For graduate students, the Placement Office may be of assistance in the fields of educational, business, industrial, or government placement.

The Symphony Orchestra performs three concerts during the year, accompanies the opera, and appears off campus in high schools. The final performance is presented by the senior musicians at the Commencement Concert.

For many years the A Cappella choir has been one of the most outstanding features of the music program. Singing for numerous occasions, the choir performs throughout Northern California in addition to appearances in Stockton and on campus. The highlight of their busy schedule is the annual tour. Anyone interested in joining with this group should contact the staff at the Conservatory for an audition.





The upward trend of the Tiger Sports teams was certainly exhibited by the Pacific Basketball Team. Under the leadership of Coach Dick Edwards, the team last year made an impressive showing. For the second time the Tigers captured first place in the West Coast Athletic Conference, WCAC, and then went to Oregon for the NCAA Western Regionals where they ranked second only to UCLA. This year promises to be another exciting season for the Pacific Basketball fans. Despite losing a number of the outstanding players from last year, the team members and the coach anticipate another successful season.

The tracksters of this last year established themselves as a fairly well balanced team, however many injuries and bad weather hampered their record. Coach Darrell Zimmerman has an optimistic outlook for the team this coming season.

Rounding out the intercollegiate sports program at Pacific is the water polo, swimming, golf and tennis teams. Through the efforts of the coaches and the team members, Pacific has been well represented in these areas. The outlook for the coming year is very favorable for these sports.

Good fortune should be with the 1967 baseball team as they approach the coming season. The squad will be losing only one member. With the successful trend this past season, next year should prove to be a favorable one for the Tiger Baseball Team.

The Cross Country Team, while it did not have a very impressive record, provided a fun-filled and memorable season for its members. The returning members of the team and the coach approach the coming season with great anticipation.







During your stay here at Pacific you will have an opportunity to participate in many activities and develop many new interests; however, it is in the classroom that the most serious training will take place. In the same tradition that permeates the campuses of West Point, Annapolis, the Air Force and Harvard, and many other major universities, Pacific operates according to the Honor Code.

Established in 1958, the Honor System is made possible by the involvement and cooperation of every student and faculty member. For the exact nature of this system, see "You and the Honor Code," a booklet available at various places on the campus. The general nature of the Honor Code is such that each student must exercise discretion; that is, while respecting the rights of others, he must nonetheless report violations.

## CAMPUS HONOR SOCIETIES NATIONAL HONOR SOCIETIES

Alpha Epsilon Delta — pre-medical honor society  
Alpha Lambda Delta — freshman woman's honor society  
Phi Eta Sigma — freshmen men's honorary society  
Phi Kappa Phi — honorary scholastic society  
Pi Kappa Lambda — music honorary  
Rho Chi — pharmacy honor society

## NATIONAL PROFESSIONAL ORGANIZATIONS

Alpha Chi Sigma — Chemistry students  
Kappa Psi — Male pharmacy students  
Lambda Kappa Sigma — Women pharmacy students  
Mu Phi Epsilon — Women music majors  
Phi Delta Chi — Male pharmacy students  
Phi Delta Kappa — Males in the teaching profession  
Phi Epsilon Kappa — Males teaching health, physical education and recreation  
Phi Mu Alpha — Sinfonia — Male music majors  
Sigma Alpha Eta — Speech therapy

## RECOGNITION SOCIETIES

These are invitational societies and members are chosen on a basis of service in the area represented by the society.

Alpha Epsilon Rho — Radio and television students  
Alpha Phi Gamma — National journalism honorary  
Alpha Psi Omega — Campus service men  
Beta Beta Beta — National biological society  
Blue Key — Senior Men's honorary  
Mortarboard — National Senior Women's honorary  
Phi Sigma Tau — National philosophy honorary  
Pi Kappa Delta — National forensic fraternity  
Sigma Delta Psi — Male athletics fraternity  
Spurs — National honorary for Sophomore women  
Theta Alpha Phi — National drama honorary

## STUDENT AFFILIATES OF PROFESSIONAL ORGANIZATIONS

Student Affiliates of American Chemical Society — Chemistry Students  
Student Marketing Club — Students majoring in marketing  
Student Branch of American Pharmaceutical Association — Pharmacy majors  
S.C.T.A. — Students interested in teaching  
American Society of Civil Engineers — Engineering Students  
Institute of Electrical and Electronic Engineers — Engineering Students

## LOCAL OR SPECIAL INTEREST CLUBS

Pacific Association for World Affairs — Model United Nations — For those interested in World Affairs  
Block P — Local letterman's club  
Composers Club — Founded in 1955 for talented students interested in musical composition  
German Club — German students  
International Club — For students from foreign countries and for those interested in foreign students  
Les Amis de la France — For students of French  
Math Club — For superior students of mathematics  
Off-Campus Women's Association — For women students living off campus  
Orchesis — For women interested in modern dance  
Philosophy Club — Founded in 1923 for students interested in Philosophy  
Ski Club  
Spanish Club  
Women's Recreational Association — Women's intramural sports  
Young Democrats  
Young Republicans



# Phone Directory

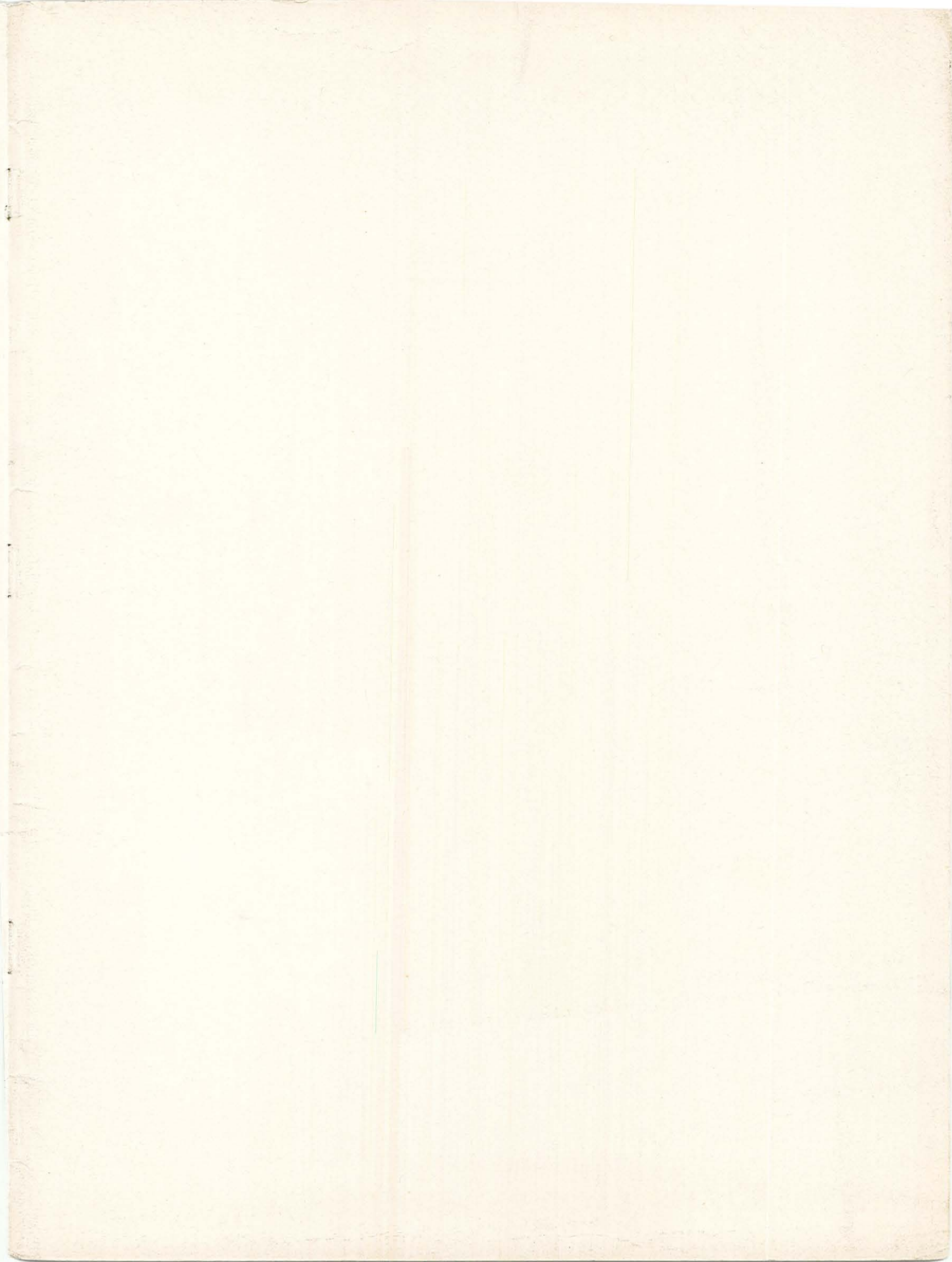
Fire Department ..... 464-4646  
 Police Department ..... 466-6843  
 Academic Vice President 466-4841 Ext 294  
 Admissions Office ..... 466-4841 Ext 332  
                                     462-6191  
 Anderson "Y" ..... 462-7314  
 Anderson Dining Hall ..... 466-4841 Ext 241  
                                     Night 466-8272  
 Art Department ..... 466-4841 Ext 318  
 Athletic Office ..... 464-4753  
 Athletic Ticket Office ..... 464-4754  
 Band Room ..... 466-4841 Ext 257  
 Bible &  
     Religious Education ..... 466-4841 Ext 238  
 Biology Department ..... 466-4841 Ext 337  
 Book Store ..... 466-4841 Ext 250  
 Business Administration  
     Department ..... 466-4841 Ext 266  
                                     Night 466-8813  
 Business Office ..... 466-4841 Ext 301  
                                     Night 466-9995  
 Building Superintendent 466-4841 Ext 282  
                                     Night 466-9361  
 California History ..... 466-4841 Ext 305  
 California Historical  
     Society ..... 466-4841 Ext 237  
 Campus Police ..... 466-4841 Ext 282  
                                     Night 466-9361  
 Chapel ..... 466-4841 Ext 218  
 Chemistry Department ..... 466-4841 Ext 287  
 Clinical Pharmacy ..... 466-4841 Ext 319  
 Clinical Services ..... 466-4841 Ext 280  
 College of the Pacific ..... 466-4841 Ext 393  
 Conservatory ..... 466-4841 Ext 335  
                                     Night 466-8127  
 Counselling Center ..... 466-4841 Ext 329  
 Covell Dining Hall ..... 462-3161  
 Credit Union ..... 466-4841 Ext 311  
 Curriculum Library ..... 466-4841 Ext 281  
 Dean of Men ..... 466-4841 Ext 291  
 Dean of Students ..... 466-4841 Ext 291  
 Dean of Women ..... 466-4841 Ext 291  
 Development Office ..... 466-4841 Ext 206  
 Drama ..... 466-4841 Ext 232  
 Duplicating ..... 466-4841 Ext 252  
 Economics ..... 466-4841 Ext 224  
 Elbert Covell College ..... 466-4841 Ext 245  
                                     466-7340  
 English Department ..... 466-4841 Ext 315  
 Field House ..... 466-4841 Ext 202  
 Financial Vice President 466-4841 Ext 338  
 Food Service ..... 466-4841 Ext 264  
                                     Night 466-9226  
 Football Coach ..... 466-4841 Ext 268  
 Geology and Geography 466-4841 Ext 330  
 History Department ..... 466-4841 Ext 224  
 Home Economics  
     Department ..... 466-4841 Ext 235  
 Housing Office ..... 466-4841 Ext 263  
                                     Night 466-9226  
 Infirmary ..... 466-4841 Ext 242  
                                     Night 466-9108  
 Information ..... 466-4841 Ext 301  
 International Student  
     Adviser ..... 466-4841 Ext 277  
 Language Laboratory ..... 466-4841 Ext 317  
 Library ..... 466-4841 Ext 305  
                                     Night 466-8382  
 Maintenance ..... 466-4841 Ext 282  
                                     Night 466-9361  
 Mathematics Department 466-4841 Ext 244  
 Modern Language  
     Department ..... 466-4841 Ext 315  
 Music Library ..... 466-4841 Ext 323  
 Naranjado ..... 464-9524  
 Pacific Student  
     Association ..... 464-9011  
 Pacifician ..... 466-9121  
 Physics Department ..... 466-4841 Ext 304  
 Placement Office ..... 466-4841 Ext 272  
                                     Night 466-9226  
 Playbox Theatre ..... 462-8676  
 Psychology  
     Department ..... 466-4841 Ext 261  
 President's Office ..... 466-4841 Ext 222  
 Public Relations ..... 466-4841 Ext 205

                                    or 285  
 Purchasing Office ..... 466-4841 Ext 375  
                                     466-9995  
 Quad Dining Hall ..... 466-4841 Ext 200  
                                     or 271  
                                     Night 466-7293  
 Radio Station  
     KUOP-FM ..... 466-4841 Ext 259  
                                     Night 466-7140  
 Tower Studio ..... 466-4841 Ext 341  
 Raymond College ..... 466-4841 Ext 324  
                                     466-6307  
 Registrar ..... 466-4841 Ext 289  
                                     Night 466-8813  
 School of Education ..... 466-4841 Ext 313  
                                     Night 466-6387  
 School of Engineering ..... 466-4841 Ext 203  
 School of Pharmacy ..... 466-4841 Ext 295  
                                     Night 466-6518  
 University of the Pacific ..... 466-4841  
 Veterans' Clerk ..... 466-4841 Ext 289  
 Alpha Chi Omega ..... 462-9364  
 Alpha Kappa Lambda ..... 462-9531  
 Balantyne Hall—  
     Head Resident ..... 466-4841 Ext 273  
     First Floor ..... 462-9531  
     Second Floor ..... 462-9488  
     Third Floor ..... 462-9717  
 Casa Jackson—  
     Head Resident ..... 466-4841 Ext 249  
     First Floor ..... 462-9283  
     Second Floor ..... 462-9607  
     Third Floor ..... 462-9752  
 Casa Werner—  
     Head Resident ..... 466-4841 Ext 310  
     First Floor ..... 462-9321  
     Second Floor ..... 462-9561  
     Third Floor ..... 462-9688  
 Covell Hall ..... 466-3581  
 Delta Delta Delta ..... 462-9419  
                                     or 462-9261  
 Delta Gamma ..... 462-9218  
 Delta Upsilon ..... 462-9501  
 Eiselen House—  
     First Floor ..... 462-9614  
     Second Floor ..... 462-9746  
     Third Floor ..... 462-9700  
 Farley House—  
     Head Resident ..... 466-4841 Ext 225  
     First Floor ..... 462-9808  
     Second Floor ..... 462-9458  
     Third Floor ..... 462-9146  
 Gamma Phi Beta ..... 462-9584  
 Kappa Alpha Theta ..... 462-9292  
 McConchie Hall ..... 464-7523  
 Phi Delta Chi ..... 463-9107  
 Phi Kappa Tau ..... 462-9405  
 Phi Sigma Kappa ..... 462-9336  
 Price House—  
     Head Resident ..... 466-4941 Ext 210  
     First Floor ..... 462-9824  
     Second Floor ..... 462-9594  
     Third Floor ..... 462-9128  
 Carter House—  
     Head Resident ..... 466-4841 Ext 342  
     First Floor ..... 462-9037  
     Second Floor ..... 462-9191  
     Third Floor ..... 462-9271  
 John Ballantyne Hall—  
     Head Resident ..... 466-4741 Ext 343  
     First Floor ..... 462-9346  
     Second Floor ..... 462-9400  
     Third Floor ..... 462-9567  
 Ritter House—  
     Head Resident ..... 466-4841 Ext 236  
     First Floor ..... 462-9559  
     Second Floor ..... 462-9231  
     Third Floor ..... 462-9485  
 South Hall ..... 462-9572  
 Wemyss House—  
     Head Resident ..... 466-4841 Ext 233  
     First Floor ..... 462-9176  
     Second Floor ..... 462-9270  
     Third Floor ..... 462-9809  
 West Hall ..... 461-9942

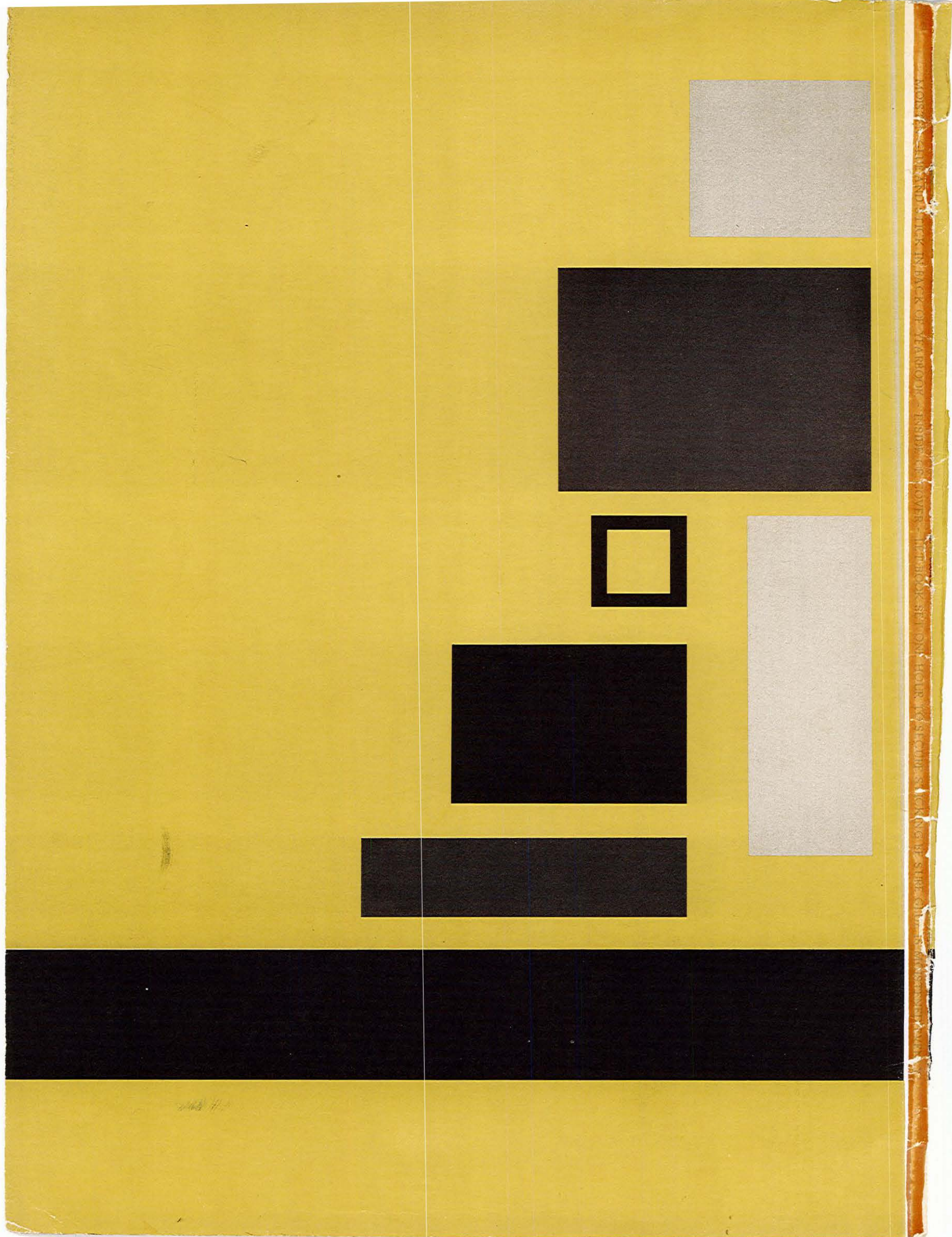












MORE A FINE AND THICK IN BACK OF YEARBOOK - INSIDE OF COVER - LITHOGRAPHY ON - HOUR TO SHOWS FOR NEAR STREETS - IS A DISSEMINATED