



12-2017


# Garden Building Design Project

Gena Farley  
*University of the Pacific*

Vanessa Villanueva  
*University of the Pacific*

Jayanne Asuncion  
*University of the Pacific*

Follow this and additional works at: [https://scholarlycommons.pacific.edu/bim\\_projects](https://scholarlycommons.pacific.edu/bim_projects)

 Part of the [Architectural Engineering Commons](#), [Civil Engineering Commons](#), [Engineering Education Commons](#), [Other Engineering Commons](#), and the [Urban, Community and Regional Planning Commons](#)

## Recommended Citation

Farley, Gena; Villanueva, Vanessa; and Asuncion, Jayanne, "Garden Building Design Project" (2017). *Building Information Modeling Final Projects*. 6.

[https://scholarlycommons.pacific.edu/bim\\_projects/6](https://scholarlycommons.pacific.edu/bim_projects/6)


This Digital Project is brought to you for free and open access by the School of Engineering and Computer Science at Scholarly Commons. It has been accepted for inclusion in Building Information Modeling Final Projects by an authorized administrator of Scholarly Commons. For more information, please contact [mgibney@pacific.edu](mailto:mgibney@pacific.edu).

# GARDEN BUILDING DESIGN PROJECT

Gena Farley, Vanessa Villanueva, Jayanne Asuncion

December 7, 2017

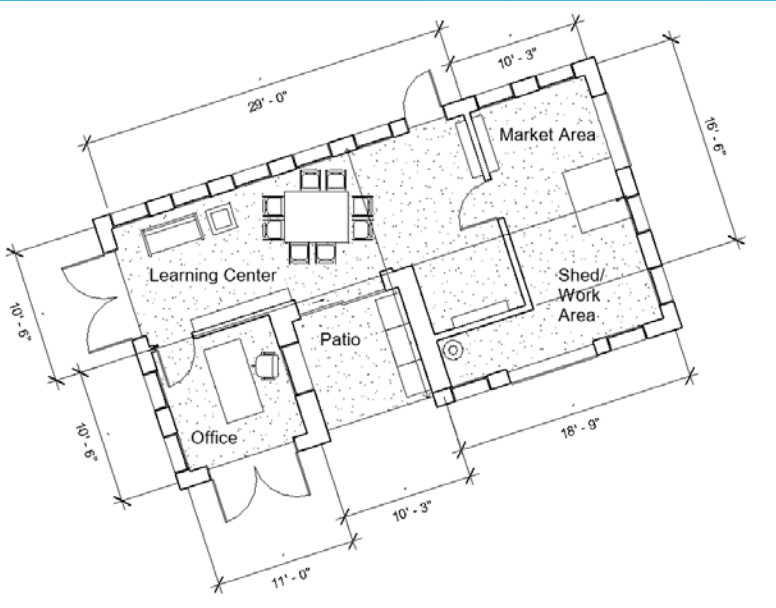
# Customer Needs:

- Plant library
  - Office space
  - Classroom space/ multipurpose area
  - Shed for tools
  - Market area open to public
- 
- A decorative graphic consisting of several parallel white lines of varying lengths, slanted upwards from left to right, located in the bottom right corner of the slide.

# ARCHITECTURE: FLOOR PLAN

- Amended Items:

- SQ. FT. of shed reduced; SQ. FT. of Learning Center increased to include more space for a seed library
- Room dimensions added
- Roll-up door to shed now opens into garden, not patio
- Window looking onto patio from director's office
- French doors open into garden
- Larger sink added
- Outdoor tables for produce added



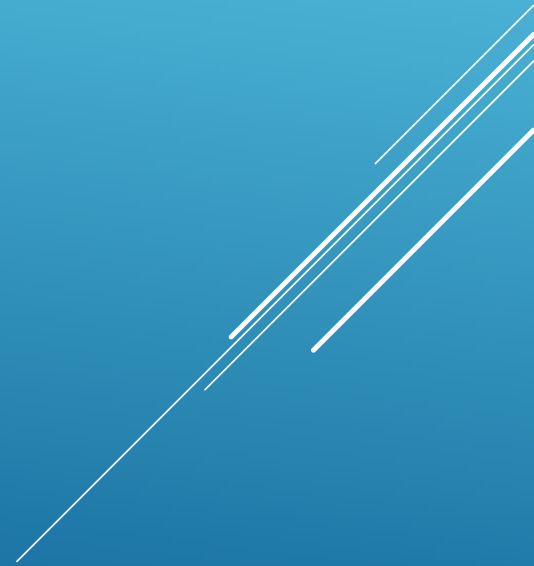
# Rendering

Exterior Rendering- Sun Only



# Rendering

Interior Rendering- Sun and Artificial



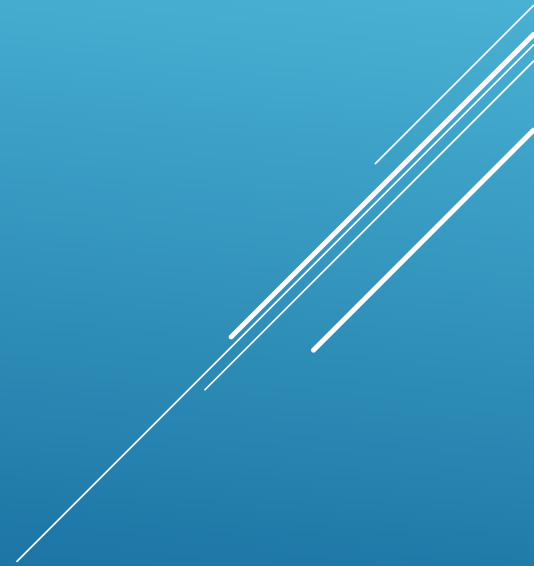
# Rendering



Front View



Back View



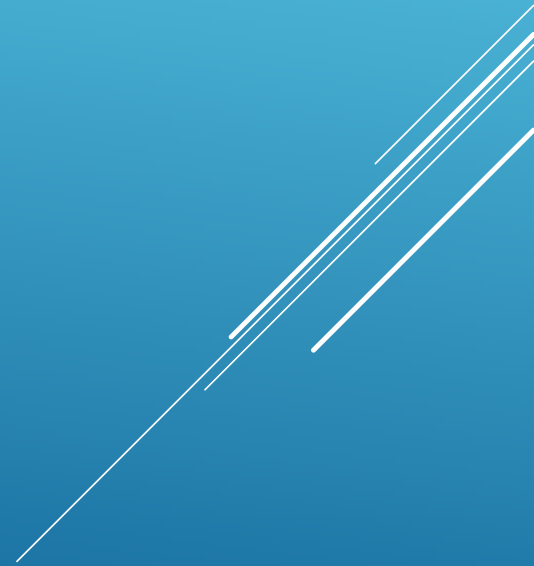
# Rendering



West View




East View

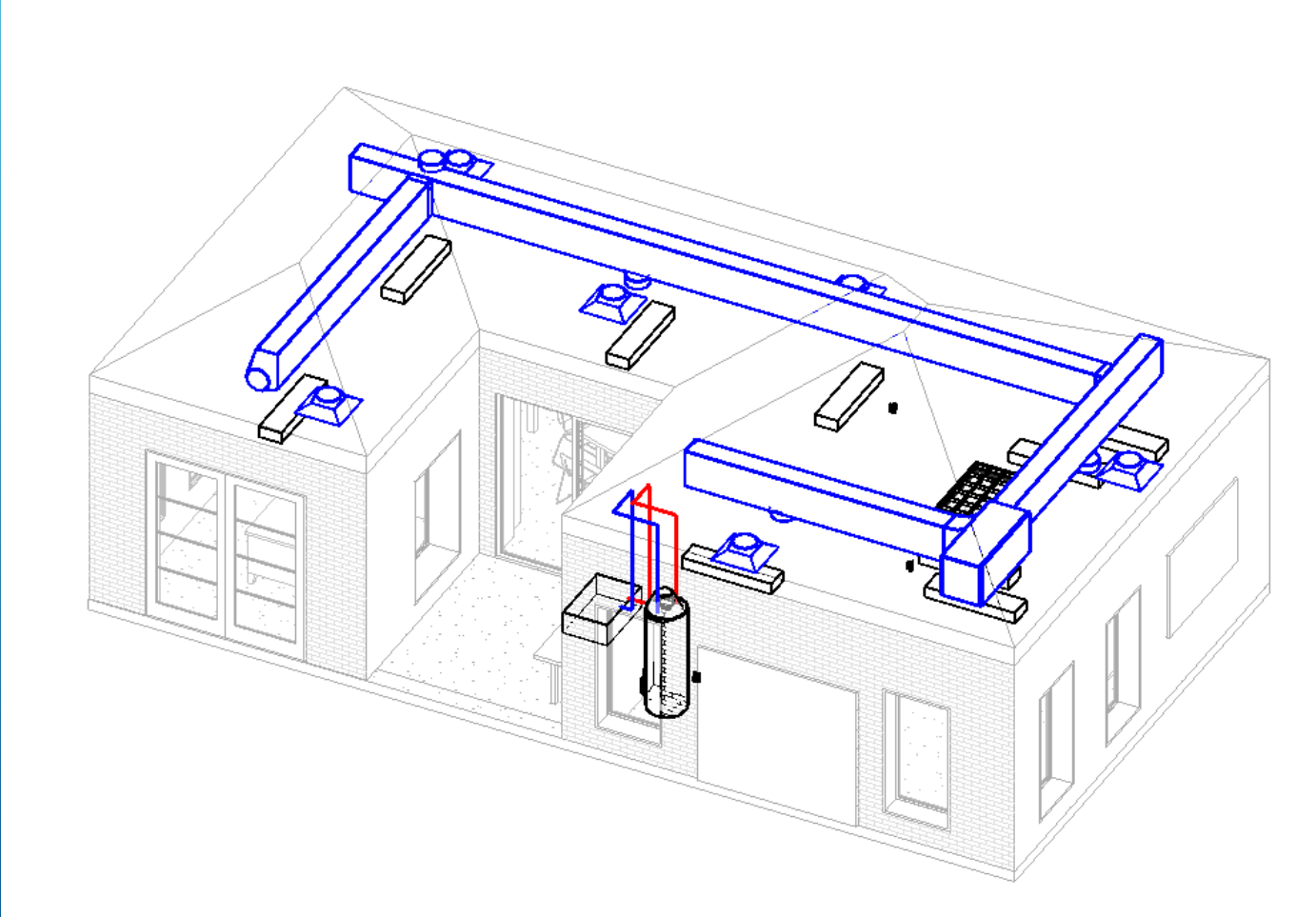




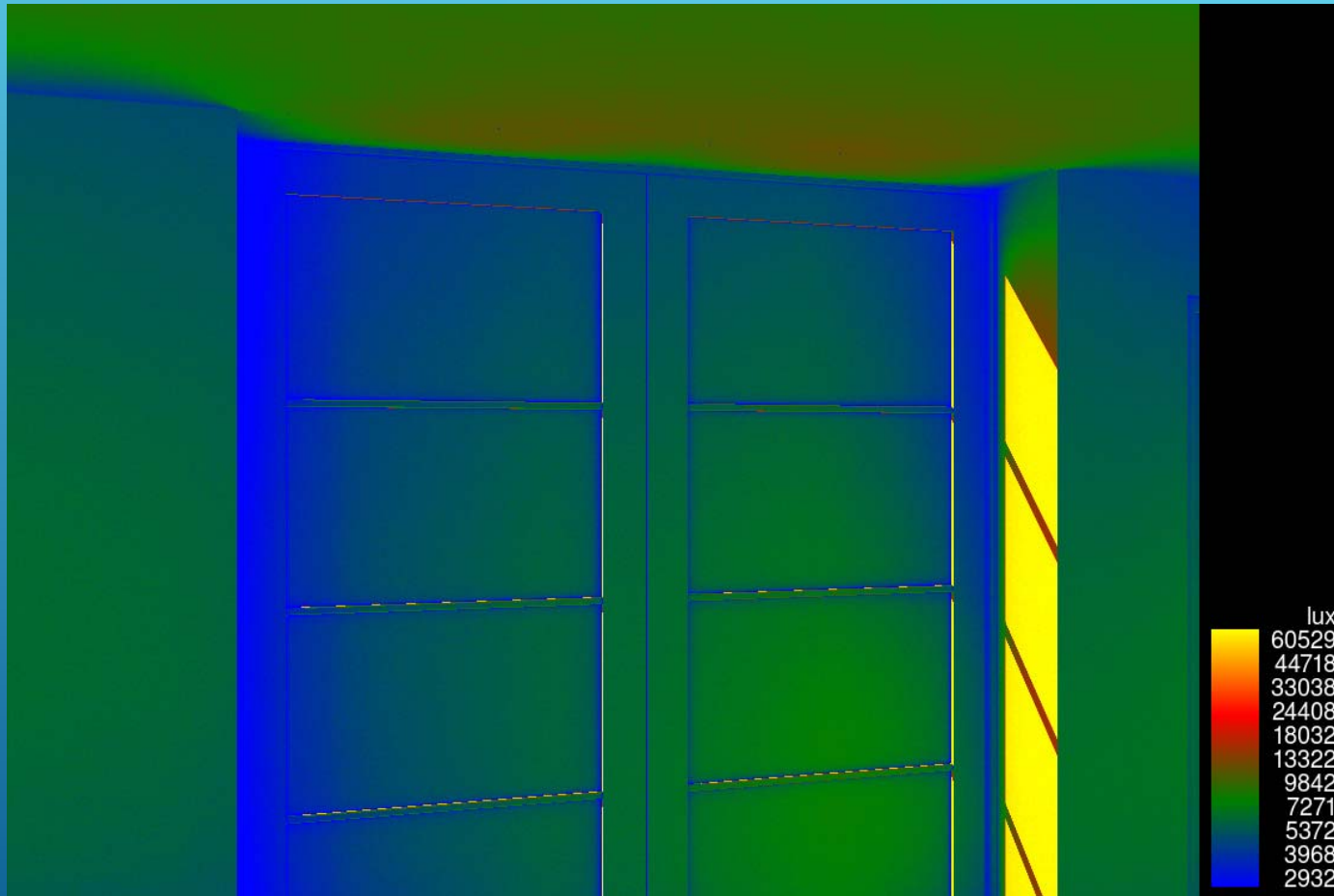
# Key Design Features of Garden Building

- Large full body windows for natural light
  - Natural ventilation of air by use of sliding doors, French doors and multiple windows
  - Larger sink on outdoor patio and tables on either side
  - Roll up market window opens to the street
  - Roll up door for garden tools opens directly into garden
- 
- A decorative graphic consisting of several parallel white lines of varying lengths, slanted diagonally from the bottom right towards the top right, set against the blue background.

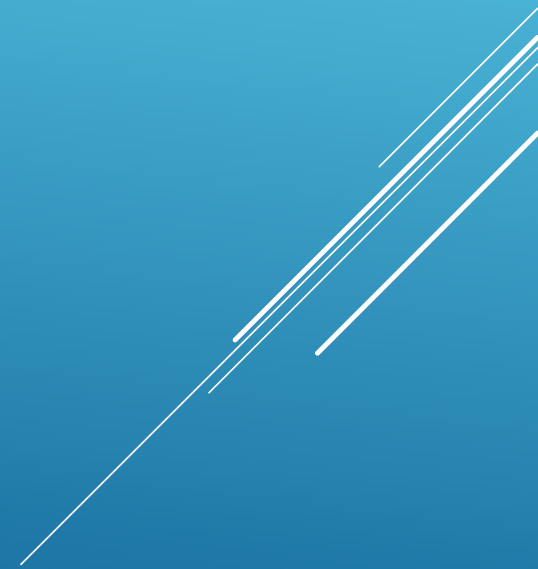
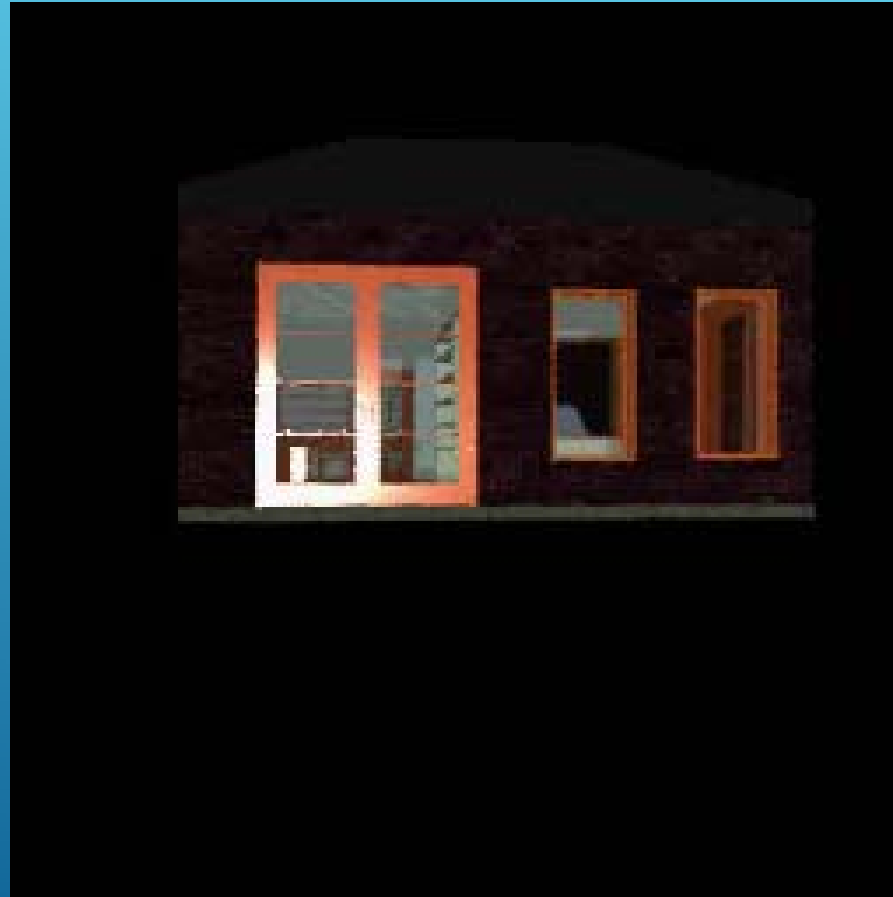
# MEP



# Lighting Analysis

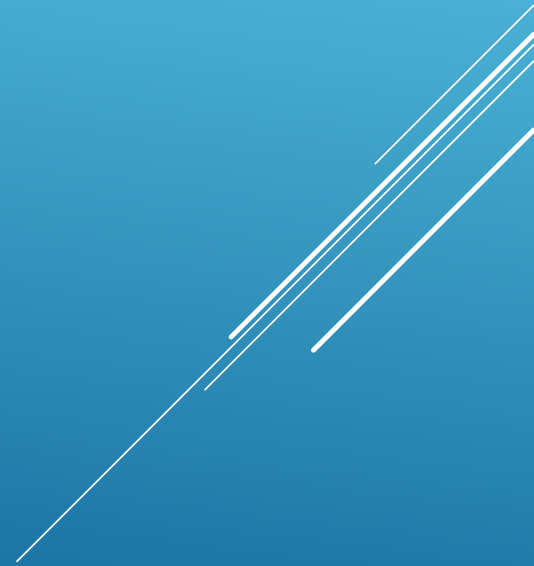


# Animation



# Quantity Takeoff and Cost Estimates

- Final cost: approximately \$65,000



# SWOT Analysis

## Strengths

- Ties together actual real life experiences by working with a client
- Improves communication skills among project managers and client

## Weaknesses

- Plans details can become difficult to account for
- Multiple iterations must be done until the “perfect” design is implemented

## Opportunities

- Ability to grow communication skills with an actual client
- Advice and input from professionals in the field

## Threats

- Competing university interests could want to utilize that area
- The university may not fund the project

